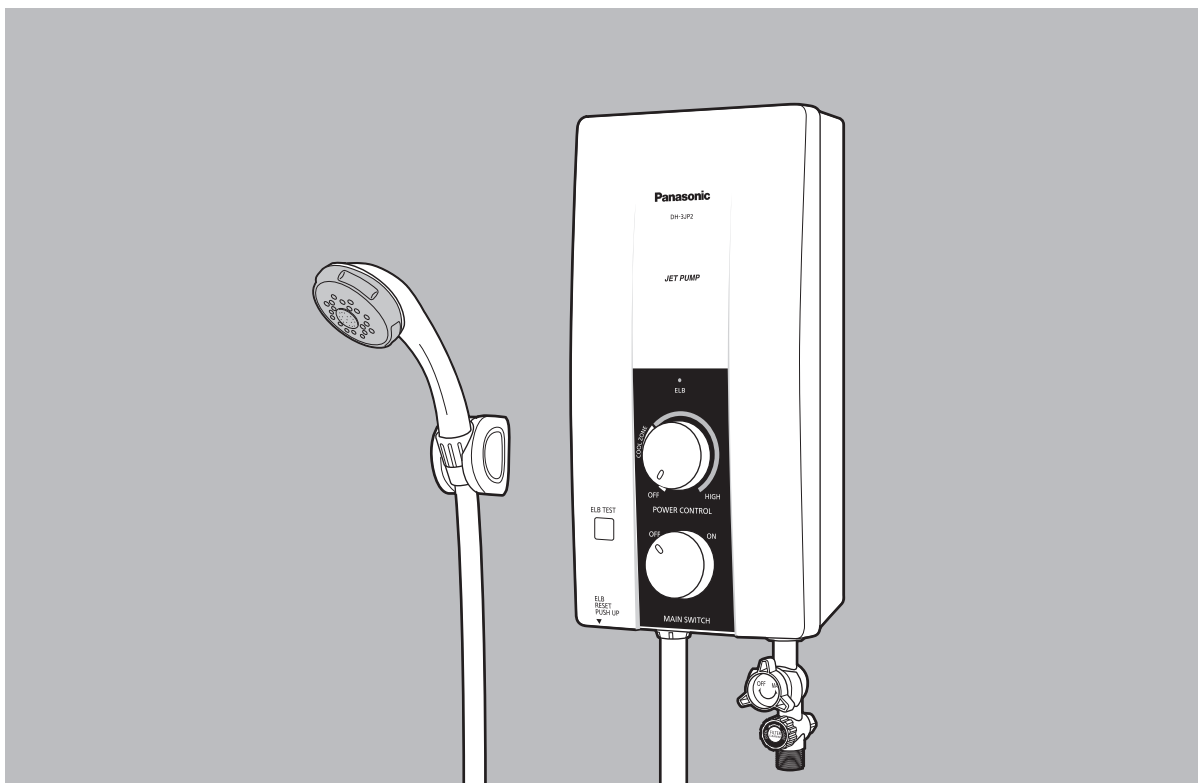




Operating and Installation Instructions

Electric Home Shower

DH-3JP2



Thank you for purchasing the Electric Home Shower. This appliance is intended for household use only.
For optimum performance and safety, please carefully read this Operating Instructions and keep this documentation
in a safe place for future reference

DH940A3JP2P2

CONTENTS

	Page No.
BEFORE USING ELECTRIC HOME SHOWER	2
1. SAFETY INSTRUCTIONS	2
HOW TO INSTALL ELECTRIC HOME SHOWER	4
1. BEFORE INSTALLATION	4
2. HOW TO INSTALL	4
3. TEST OPERATION	7
HOW TO USE ELECTRIC HOME SHOWER	7
1. PARTS IDENTIFICATION	7
2. HOW TO USE	8
3. WATER FLOW RATE ADJUSTMENT	8
MAINTENANCE	9
TROUBLESHOOTING	10
SPECIFICATION	10

BEFORE USING ELECTRIC HOME SHOWER

1. SAFETY INSTRUCTIONS

SAFETY INSTRUCTIONS To be followed absolutely

Before operating, please read the following "Safety Instructions" carefully.

To prevent personal injury, injury to others and property damage, the following instructions must be followed.

- Incorrect operation caused by failure to follow instructions will cause harm or damage, the seriousness of which is classified as follow:



WARNING

This sign warns of death or serious injury.



CAUTION

This sign warns of injury to users or damage to property.

- The instructions to be followed are classified by the following symbols:



This symbol (with a white background) denotes an action that is **PROHIBITED**.



This symbol (with a black background) denote action that is **COMPULSORY**.

⚠ WARNING

! Stop using the unit when any abnormality/failure occurs and turn "OFF" the Miniature Circuit Breaker (MCB). (Risk of smoke/fire/electric shock/scalding)

Example of abnormality/failure

- The ELB Reset Lever cannot be set even if you push it up or if it soon slides down during operation.
- Burnt odor or smoke is detected during operation.
- The Front Plate/Back Plate is deformed or abnormally hot.
- The outlet water temperature become extremely hot and cannot be controlled using the Power Control Knob.

Contact immediately your authorized dealer for maintenance/repair.



• The unit must be earthed.

Improper grounding could cause electric shock.



• Do not insert finger or other objects into the electric home shower units to avoiding physical and electric shock hazards.



• Proper size of Flexible Cord and electric wiring must be installed to avoid smoke emission and fire hazards.



• If the ELB Reset Lever cannot be set even if you push it up or if it soon slides down during operation, please do not use the unit and contact the authorized dealer immediately. Never fix the ELB Reset Lever forcibly with tape, etc.



• Do not install, remove and reinstall the unit by yourself. Improper installation will cause leakage, electric shock or fire. Installation and wiring must be done by competent personnel.



• Never install Filter Body Assembly at the outlet. Inlet water cannot be filtered and allows foreign particles to enter the unit. It will cause Heater Unit and Shower Head to clogged up.



• This appliance is not intended for use by persons (including children) with reduced physical, sensory or mental capabilities, or lack of experience and knowledge, unless they have been given supervision or instruction concerning use of the appliance by a person responsible for their safety. Children should be supervised to ensure that they do not play with the appliance.



• The home shower must be permanently connected to the electric supply through the ON/OFF DP (double pole) Switch having a contact separation of at least 3mm in all poles incorporated in the fixed wiring. This switch must be clearly identifiable but out of reach of a person using a fixed bath or shower.



• Do not replace the Shower Head, Shower Hose or any other parts of the unit with spare parts other than genuine parts.

Parts for other models will not fit to this model and may cause hazardous condition to user.



• Switch "OFF" the Miniature Circuit Breaker (MCB) before any service.

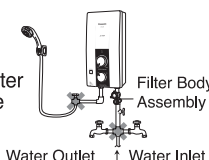


• Each time shower water is turned 'ON', check the water temperature by hand before showering.



• Do not share the inlet or outlet pipe of Home Shower unit with other outlets.

The pressure may drop due to water being drawn off at other point. The shower water temperature may become very hot.



• When the shower is used by someone such as child, old person, sick person and physically handicapped person, the concern person is kindly requested to pay attention and check the shower temperature by using hand from time to time.



• Pay attention to shower temperature when reducing the volume of water.

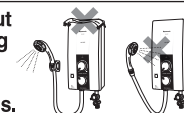
The shower temperature will become very hot if the water flow rate is too low.



• In time of lightning/thunder, switch "OFF" the Miniature Circuit Breaker (MCB) in advance to protect the shower unit against possible damage.



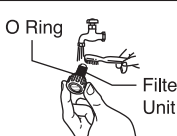
• Do not spray water to the unit, nor put wet towels on it to avoid from coming into contact with any live parts etc., in order to prevent smoke emission, ignition, fire and electric shock hazards.



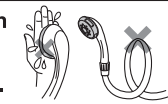
⚠ CAUTION



• Please make sure the O Ring is not removed and shall be free from foreign particle to avoid water leaking.



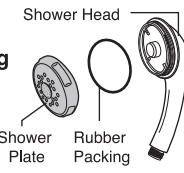
• Do not block the Shower Head with hand, towel or bend the hose. The water flow rate will drop and water temperature may become very hot.



• Never use benzene, thinner, bleaching agent, etc. for cleaning purpose to avoid smoke emission, ignition, fire and electric shock hazards.



• Take care not to damage the holes of the Shower Plate during the cleaning. The Rubber Packing shall be set on the Shower Head before fixing back the Shower Plate to Shower Head. Do not remove part other than Shower Plate and Rubber Packing.



• Avoid using dirty water as it may affect heater performance and other components.



• In order to avoid a hazard due to inadvertent resetting of the thermal cut-out, this appliance must not be supplied through an external switching device, such as timer, or connected to a circuit that is regularly switched on and off by the utility.



• Flexible Cord must enter the unit thru designed point only (do not make additional holes).

HOW TO INSTALL ELECTRIC HOME SHOWER



- Do not install, remove and reinstall the unit by yourself.
Improper installation will cause leakage, electric shock or fire.

- SPECIAL SKILL IS REQUIRED TO INSTALL THE UNIT. PLEASE ASK FROM YOUR AUTHORIZED DEALERS.



WARNING



The unit must be earthed.

1. BEFORE INSTALLATION

(1) Make sure water flow pressure.

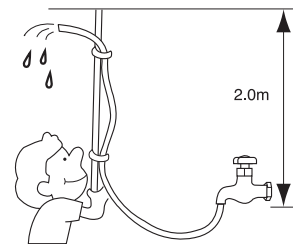
- Min. water pressure 4.9 kPa / 0.05 kgf/cm² / 0.7 psi
 Max. water pressure 380 kPa / 3.87 kgf/cm² / 55 psi
- How to measure the water pressure as illustrated. Water should flow out of the Hose 2.0 m above the Main Water Valve.

(2) Parts list.

Unit	Shower Head	Shower Hose	Shower Hanger	Filter Body Assembly
Wall Plug (6 pcs)	Operating and Installation Instructions	Rubber Packing (3 pcs)	Screws (6 pcs)	
X 6		X 3	X 6	

Note

Ensure that the water feeding into the inlet connection be drawn from the household gravity water storage tank and not from the main water supply.



Note: When removing the unit from package, some water may be found inside.
 This is normal as the unit is tested during the manufacturing process.

2. HOW TO INSTALL

1. Where to install the unit.

- Be sure to install the unit on the wall as illustrated in Figure 1 (vertical condition only).
- Do not install the unit away from wall surface as shown in Figure 2.
- The unit must be installed at 1.5m ~ 1.7m above the floor.

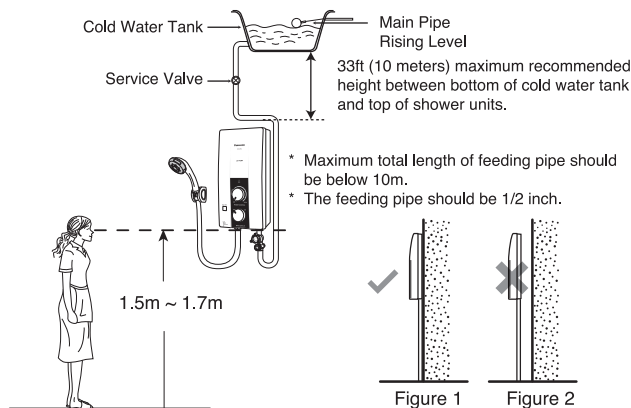
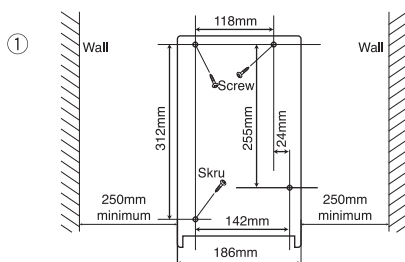


Figure 1

Figure 2

3. How to fix Electric Home Shower.

- The distance of the unit should be more than 250mm at right and left of the wall.

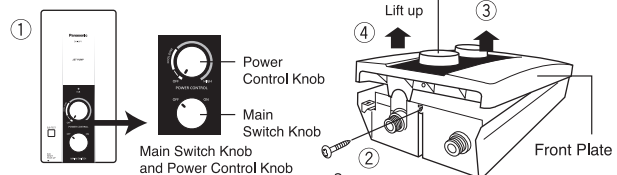


2. How to remove the Front Plate

- Make sure the Main Switch Knob and Power Control Knob are at "OFF" condition.
- Remove the screw at the bottom of the unit.
- Lift up the Main Switch Knob and Power Control Knob to make it free (Main Switch Knob and Power Control Knob are attached to Rotary Shaft and VR Shaft inside the unit). Make sure the Main Switch Knob and Power Control Knob are not detached from the Front Plate.
- Remove the Front Plate by lifting up the bottom side and then unhook the top side.

Note:

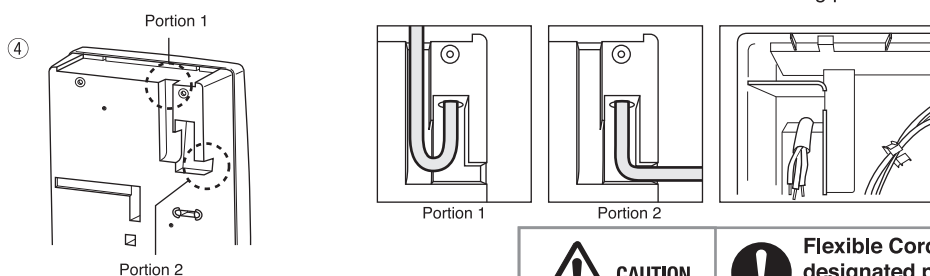
Main Switch Knob and Power Control Knob are attached to Front Plate. Do not remove Main Switch Knob and Power Control Knob from Front Plate.



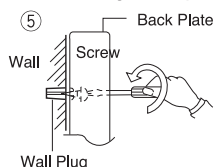
- Make 4 holes at the wall by means of a drill.
- Drive a Wall Plug into the hole.



- ④ Lead the Flexible Cord to the set thru Portion 1 or 2 as shown below for electric wiring process.

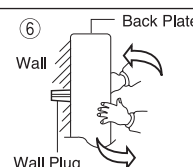


- ⑤ • Mount the unit on the wall with 4 screws.
• Drive each Screw into the two upper Wall Plugs through the screw holes on the Back Plate.
• After tighten up the two upper Screws, tighten up the remaining two Screws.



- ⑥ Please ensure the set fixed tightly on wall by shaking it left and right.

Note: The Back Plate must be mounted with 4 Screws.



4. Electric wiring



WARNING



Proper size of Flexible Cord and electric wiring must be installed to avoid smoke emission and fire hazards.

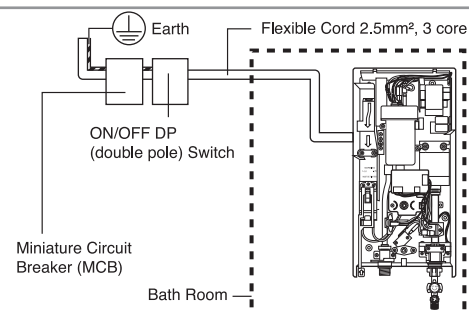
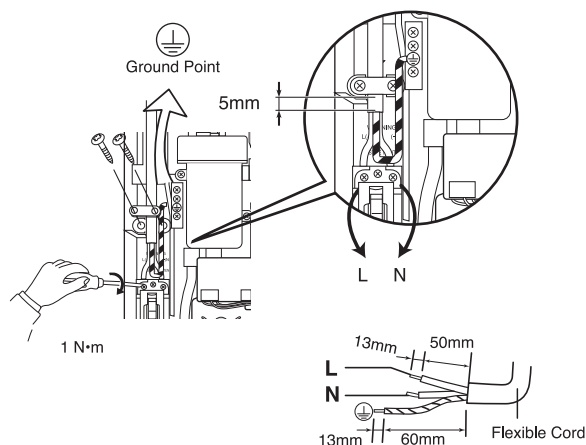


WARNING

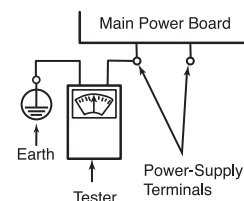


The home shower must be permanently connected to the electric supply through the ON/OFF DP (double pole) Switch having a contact separation of at least 3mm in all poles incorporated in the fixed wiring. This switch must be clearly identifiable but out of reach of a person using a fixed bath or shower.

- ① Lead the Flexible Cord connected to ELB terminal inside the unit:
2.5mm², 3 core Flexible Cord.
② Unscrew the Cord Holder and fix the Flexible Cord. Strip the lead wire (coating). Fasten the life wire (L) and neutral wire (N) to the ELB (L,N) and earth wire to the Ground Point with 1N·m (10kgf.cm) torque. Fix back the Cord Holder to its position to clamp the Flexible Cord.



- ③ **Connect wires in correct polarity (L,N).**
- Connect the wires in wrong polarity (L,N) causes an abnormal condition which may lead to electric leaking, burning, etc.
 - Before wiring, please check polarity (L,N) with voltage range of a tester or voltmeter by connecting one terminal of the meter to earth while the other to one of the Power Supply terminals.
 - When the needle of the meter deflects greatly, the polarity of the Power Supply terminal is 'L'.



④ Earth Rod

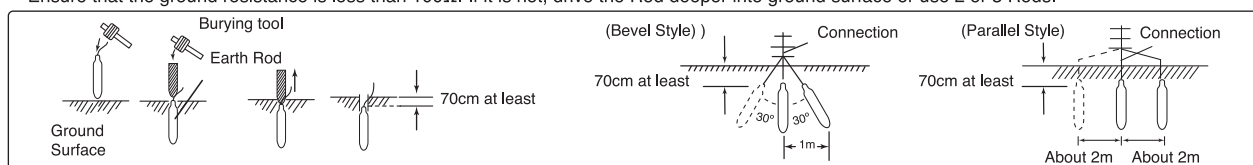


WARNING







The unit must be earthed.
Improper grounding could cause electric shock.

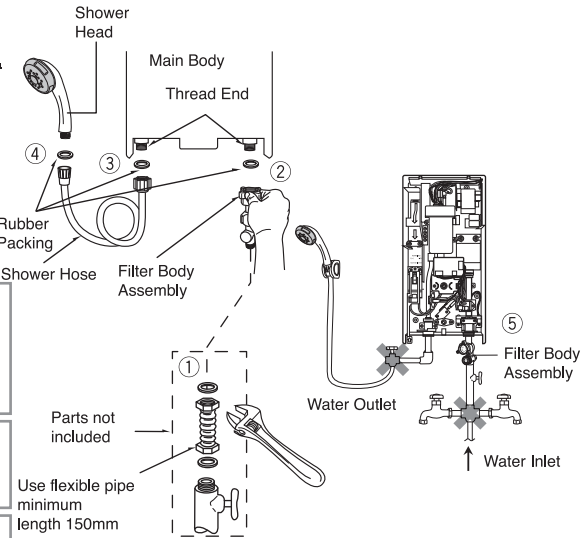
- The unit must be earthed.
- Earth Rod handling procedure. Select adapter place to bury the optional Earth Rod (DQ-6H) for at least 70cm below ground surface.
- Ensure that the ground resistance is less than 100Ω. If it is not, drive the Rod deeper into ground surface or use 2 or 3 Rods.



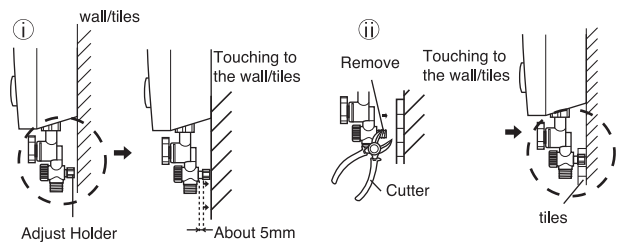
5. Piping installation procedure

- ① Place Rubber Packing between Filter Body Assembly and Flexible Pipe. Do not use Piping Tape. **Tighten it by Spanner firmly.**
- ② Place Rubber Packing between Filter Body Assembly and Main Body. Do not use Piping Tape. **Tighten it by hand firmly.**
- ③ Place Rubber Packing between Shower Hose and Main Body. Do not use Piping Tape. **Tighten it by hand firmly.**
- ④ Place Rubber Packing between Shower Hose and Shower Head. Do not use Piping Tape. **Tighten it by hand firmly.**
- ⑤ The Filter Body Assembly should be placed in the front direction of the unit.

 WARNING	 Do not share the inlet or outlet pipe of Home Shower unit with other outlets. The pressure may drop due to water being drawn off at other point. The shower water temperature may become very hot.
 CAUTION	 Avoid using dirty water as it may affect heater performance and other components.
NOTE:	Make sure no water leaks from pipe connection.
NOTE:	When glue is used for external piping connection, must wait for the glue to dry before proceed to test run with water.

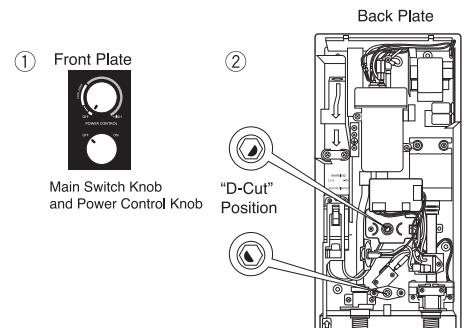


- ⑥ Adjust Holder Adjustment. (Behind Filter Body Assembly).
 - ① Set the Adjust Holder behind the Filter Body Assembly by turning it anti-clockwise or clockwise. Make sure the Adjust Holder is touching to the wall or tiles.
 - ② If the Adjust Holder needs to be cut due to different wall height make sure the Adjust Holder is touching to the wall or tiles to prevent possibility of water leakage at the Filter Body Assembly.



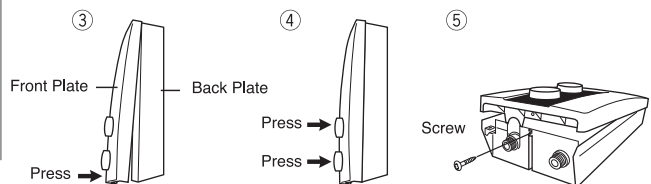
6. How to fix the Front Plate

- ① Make sure the Main Switch Knob and Power Control Knob on Front Plate and it is at "OFF" position.
- ② Make sure the "D-Cut" position of the Rotary Shaft and VR Shaft are located as shown.
- ③ Close the Front Plate of the unit according to the sequence as illustrated.
- ④ Push in the Main Switch Knob and Power Control Knob until it is fully insert <Main Switch Knob and Power Control Knob can not be inserted if Step ① and Step ② is not done accordingly>
- ⑤ Fix the Screw at the bottom of the unit.



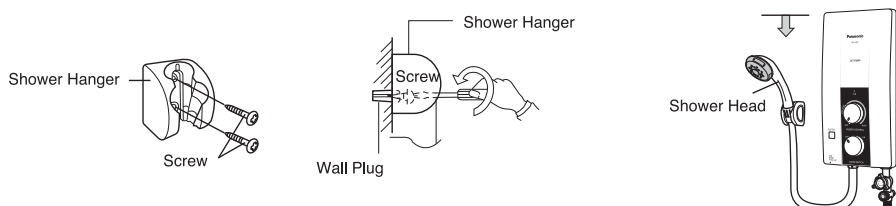
Note:

1. Do not push the ELB Test Button during fixing the Front Plate.
2. Do not apply extreme force to insert the Main Switch Knob and Power Control Knob during fixing the Front Plate because it will damage the switch inside the unit.



7. Shower Hanger Installation

- Mount the Shower Hanger on the wall with 2 Screws.
- Drive each Screws into the 2 Wall Plugs through the screw holes.
- Make sure the Shower Head top is not higher than the unit top when installing the Shower Hanger.



3. TEST OPERATION

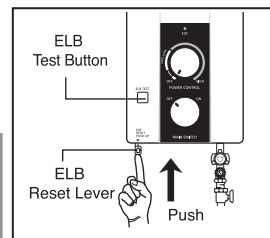
- Before switch "ON" electricity supply, please check the electrical wiring connection to the unit.
- Switch "ON" the Miniature Circuit Breaker and ON/OFF DP (double pole) Switch.
- Set the ELB of the unit to "ON". (Push up the ELB Reset Lever if it is down)
- Press the ELB Test Button.
- It is normal if the ELB turns "OFF" (the ELB Reset Lever slides down), push up the ELB Reset Lever to switch on the unit again.



WARNING



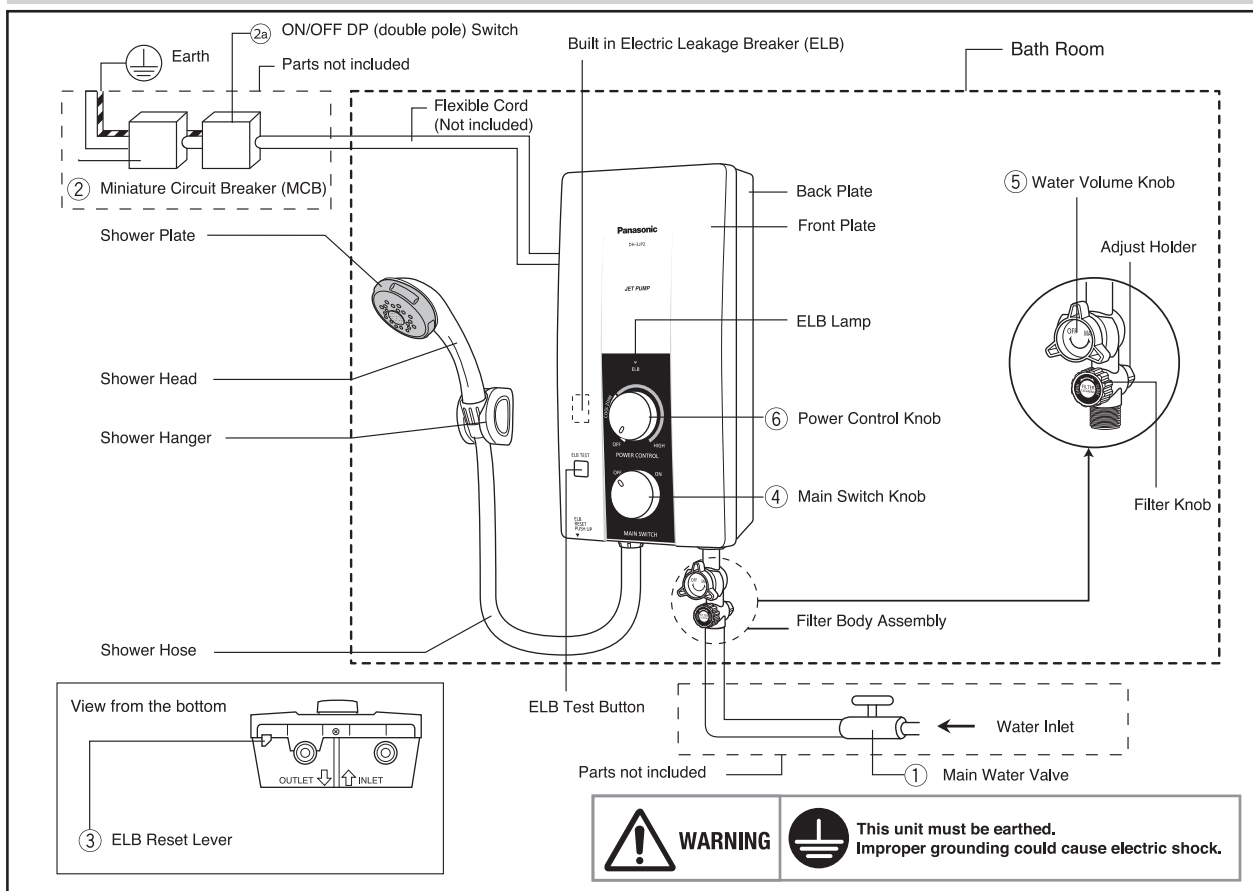
If the ELB Reset Lever cannot be set even if you push it up or if it soon slides down during operation, please do not use the unit and contact the authorized dealer immediately. Never fix the ELB Reset Lever forcibly with tape, etc.



- Turn "ON" the Main Water Valve.
- Turn the Water Volume Knob anticlockwise and water will flow out from the Shower Head.
- Check if water leaks from Pipe Line.
- Turn the Main Switch Knob "ON" (ELB lamp will lights).
- Turn the Power Control Knob clockwise and hot water will flow out from the Shower Head. (Adjust to suitable water temperature).
- Refer detail for HOW TO USE and WATER FLOW RATE ADJUSTMENT on page 8.

HOW TO USE ELECTRIC HOME SHOWER

1. PARTS IDENTIFICATION



2. HOW TO USE

1. Turn the Water Volume Knob ⑤ anticlockwise to turn on the water (make sure the Main Water Valve ① is on).
(Water will flow out from Shower Head at inlet water temperature).
2. Switch on the Miniature Circuit Breaker (MCB) ② and ON/OFF DP (double pole) Switch ②a.
3. Push the ELB Reset Lever ③ if it is down.
4. Turn the Main Switch Knob ④ to "ON" (ELB Lamp will lights).
5. The shower temperature can be gradually controlled by turning the Power Control Knob ⑥.
If turn the Power Control Knob clockwise the shower temperature will increase, reaching the highest temperature at 'HIGH'.
6. After using this unit, please turn off the Main Switch Knob ④ and turn off the water supply by turning the Water Volume Knob clockwise until water flow is completely stop.



ELB: ON condition



ELB: OFF condition

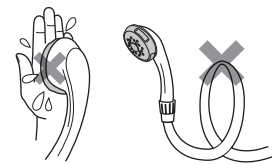
Note: In case of no water supply, close the Water Volume Knob by turn it clockwise and make sure Main Switch Knob and Power Control Knob is in "OFF" condition (ELB light is off). This to prevent unnecessary water flow from Shower Head after the water supply recovered.



CAUTION



Do not block the Shower Head with hand, towel or bend the hose. The water flow rate will drop and water temperature may become very hot.



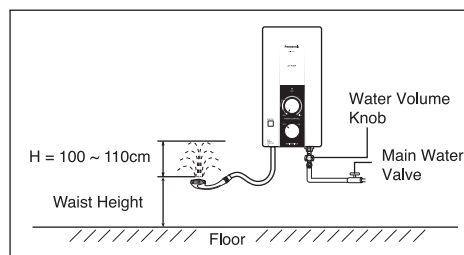
3. WATER FLOW RATE ADJUSTMENT

(1) Maximum water flow rate can be adjusted by using Main Water Valve.

- Step 1: Turn "OFF" the Main Water Valve.
- Step 2: Turn the Shower Head upward at waist height.
- Step 3: Turn the Water Volume Knob anticlockwise to maximum volume position.
- Step 4: Gradually turn "ON" the Main Water Valve and adjust the splashing height (H) of the shower.
It is recommended to adjust the water splashing height (H) at 100 ~ 110cm (approximately 3L/min).

Note:

1. After setting maximum flow rate, please use Water Volume Knob to turn "ON" and "OFF" the water supply.
2. Pay attention to shower temperature when reducing the volume of water.
The shower temperature will become very hot if the water flow rate is too low.
3. In case of continuous usage at high temperature setting, water temperature will increase and it may cause the control device to activate temporary resulting water temperature to drop.



MAINTENANCE

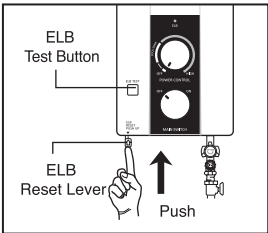


CAUTION



Switch "OFF" the Miniature Circuit Breaker (MCB) before any service.

- (1) **Inspection on the built-in ELB (once a month) to avoid a hazard to users such as damage to property, serious injury or death.**
- 1) Make sure the unit is in "ON" condition.
 - 2) Press the ELB Test Button. If the ELB is in normal condition, ELB Reset Lever will slide down. The ELB Reset Lever is located as shown in right figure.
 - 3) Push up the ELB Reset Lever to reset the ELB.

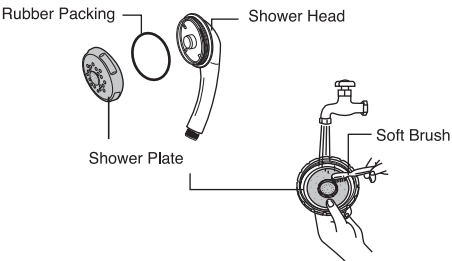


NOTE:

If the ELB Reset Lever cannot be set even if you push it up or if it soon slides down during operation, please do not use the unit and contact the authorized dealer immediately. Never fix the ELB Reset Lever forcibly with tape, etc.

- (2) **Main Body cleaning.**
- Be sure to switch off the Miniature Circuit Breaker (MCB) beforehand.
- 1) Clean it with moist cloth.
 - 2) Never use benzene, thinner, detergent, bleach, etc.
 - 3) Do not spray water to the unit, nor put wet towels on it.

- (3) **Shower Head cleaning.**
- Turn the Shower Plate anticlockwise and remove it from the Shower Head with hand. Clean the Shower Head's holes by using a soft brush from time to time (Recommended once a week).



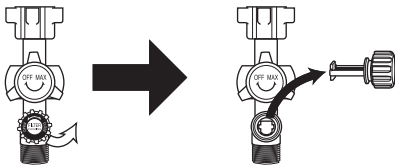
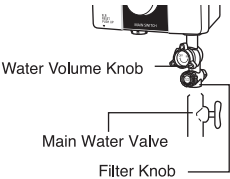
NOTE:

Take care do not damage the holes of the Shower Head during the cleaning. The Rubber Packing shall be set on the Shower Head before fixing back the Shower Plate to Shower Head. Do not remove other parts other than Shower Plate and Rubber Packing.

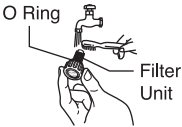
- (4) **Filter Unit cleaning (Filter unit is fixed to Filter Knob)**
- Clean the Filter of the Filter Unit with water once a week.
Clean the Filter Unit when hot water is not drawn normally.

Dismantle, cleaning and assemble of Filter Unit

- ① Close the Main Water Valve.
- ② Turn the Filter Knob anticlockwise and pull it out.



- ③ Clean the Filter Unit.



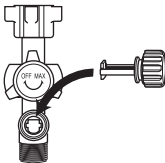


CAUTION



Please make sure the O Ring is not removed and shall be free from foreign particle to avoid water leaking.

- ④ Insert the Filter Unit and tighten it properly (clockwise).
- ⑤ Turn the Water Volume Knob to its original position base on Water Flow Rate Adjustment.



TROUBLESHOOTING

(1) Check the following points before asking for repair.

Symptom	Points to be checked
Water is not drawn normally.	1. Check the Filter Unit. Clean the Filter if it is clogged by stain and dirt (refer Filter Unit Cleaning at page 9). 2. Check the Shower Head. Clean the Shower Head if it is clogged by dirt (refer Shower Head Cleaning at page 9).
No water flows out from the Shower Head at all.	1. Check the Water Volume Knob. Turn the Water Volume Knob anticlockwise if it is closed. 2. Check the Main Water Valve. Turn "ON" the Main Water Valve if it is closed (Refer to HOW TO USE at page 8).
Water not hot enough.	1. Check the WATER FLOW RATE ADJUSTMENT as in page 8.
No hot water comes out from the outlet (no electric supply to the unit)	1. Make sure the Main Switch Knob is at "ON" position. 2. Make sure the ELB Reset Lever is not slide down. Push up the ELB Reset Lever to reset the ELB (see MAINTENANCE at page 9). 3. Make sure to switch on the ON/OFF DP (double pole) Switch. 4. Make sure to switch on the Miniature Circuit Breaker (MCB)

(2) If abnormalities as mentioned below are found during use, please do not use the unit and contact your authorized dealer immediately.

- 1) Water leakage.
- 2) No Water Flow.
- 3) Water temperature cannot be controlled.
- 4) ELB lamp does not light up.

(3) Special skill is required for repairing. Never try to repair the unit by yourself.

SPECIFICATION

Voltage	230 V a.c. 60 Hz
Power Consumption	3500 W
Electric Power Control	Inlet Water Temp. (OFF), 1000 W~3500 W
Min. Water Pressure	4.9 kPa / 0.05 kgf/cm ² / 0.7 psi
Max. Water Pressure	380 kPa / 3.87 kgf/cm ² / 55 psi
Dimension	380(H) x 190(W) x 93(D) mm
Weight	2.7 kg
Outlet System	Single Point System (Open Outlet)

MEMO

Handwriting practice area with 30 horizontal lines.

Panasonic Manufacturing Malaysia Berhad. (6100-K)

No. 3, Jalan Sesiku 15/2, Section 15, Shah Alam Industrial Site,
40200 Shah Alam, Selangor Darul Ehsan, Malaysia.

<http://www.panasonic.com>