

Panasonic



INTELLIGENT MONITORING FOR SAFER BUSINESS

PANASONIC FIRE ALARM SOLUTIONS
TECHNOLOGY FOR A BETTER WORKING WORLD



THE COMPREHENSIVE SOLUTION TO A CRITICAL BUSINESS RISK	6
EBL512 G3	8
CONTROL AND INDICATING EQUIPMENT C.I.E.	10
TLON - NETWORK FOR EBL512 G3	11
DISPLAY UNIT	12
ANALOG / ADDRESSABLE DETECTORS	13
ADVANCED MODE - ARTIFICIAL INTELLIGENCE	14
ANALOG / ADDRESSABLE DETECTORS WITHOUT ISOLATOR	16
ANALOG / ADDRESSABLE DETECTORS WITH ISOLATOR	17
ADDRESSABLE SOUNDER BASES	19
ANALOG WIRELESS SYSTEM	20
UNITS FOR HAZARDOUS (EX) AREAS - ANALOG DETECTORS	22
ANALOG / ADDRESSABLE ASPIRATING DETECTORS	23
CONVENTIONAL DETECTORS	26
BEAM DETECTORS AND FLAME DETECTORS	27
CONVENTIONAL DETECTORS / UNITS FOR HAZARDOUS AREAS	28
ADDRESSABLE COM LOOP UNITS	29
ADDRESSABLE COM LOOP UNITS - ALARM DEVICES	31
CONVENTIONAL ALARM DEVICES	32
ACCESSORIES	34
TOOLS	38
EBLWin	42
GATEWAY APPLICATIONS	43
SOFTWARE APPLICATIONS	44
EBL512 G3 SYSTEM OVERVIEW	45



CHOOSE PANASONIC FIRE SOLUTIONS AND YOU'RE CHOOSING WORLD-CLASS PROTECTION

With more than 30 years' experience in the development of fire alarm solutions, and installations in over 15,000 buildings, Panasonic provides technology that's designed not just to alert you to the outbreak of fire, but also to pre-warn you of conditions that could lead to a fire.

A track record of safety and success – our fire solutions are proven in many industries, delivering high levels of accuracy and few false alarms.

Lower total cost of ownership – because our solutions achieve outstanding levels of reliability and are easily installed, maintained and managed, the cost to the end user is reduced over the lifetime of the system.

Smart flexible detector algorithms

Our smart flexible detector algorithms improves the detection functionality, and is now available equipped with Artificial Intelligence capability. There are five algorithms inside the detector, which selects the correct mode automatically by evaluating and 'learning' from the surrounding environment.

Improved detector chamber with extremely fine mesh net

Following extensive research into detector reliability, Panasonic identified that 78% of unwanted alarms were caused by dust or insects – both capable of passing through traditional detector meshnets. We have reduced our mesh net to just 0.3mm, reducing cases of unwanted alarms dramatically.

Constant smoke contamination monitoring

Our fire systems are constantly monitoring the levels of contamination in the detectors, and has sensitivity compensation for contamination. This lowers ongoing maintenance costs and maintains a high and consistent level of protection.

Tested not once, but twice

Smoke detectors are life-saving devices. So every Panasonic smoke detector is tested twice with real smoke during the production process. We never use statistical, theoretical testing methods, ensuring the highest possible levels of reliability.

High noise immunity

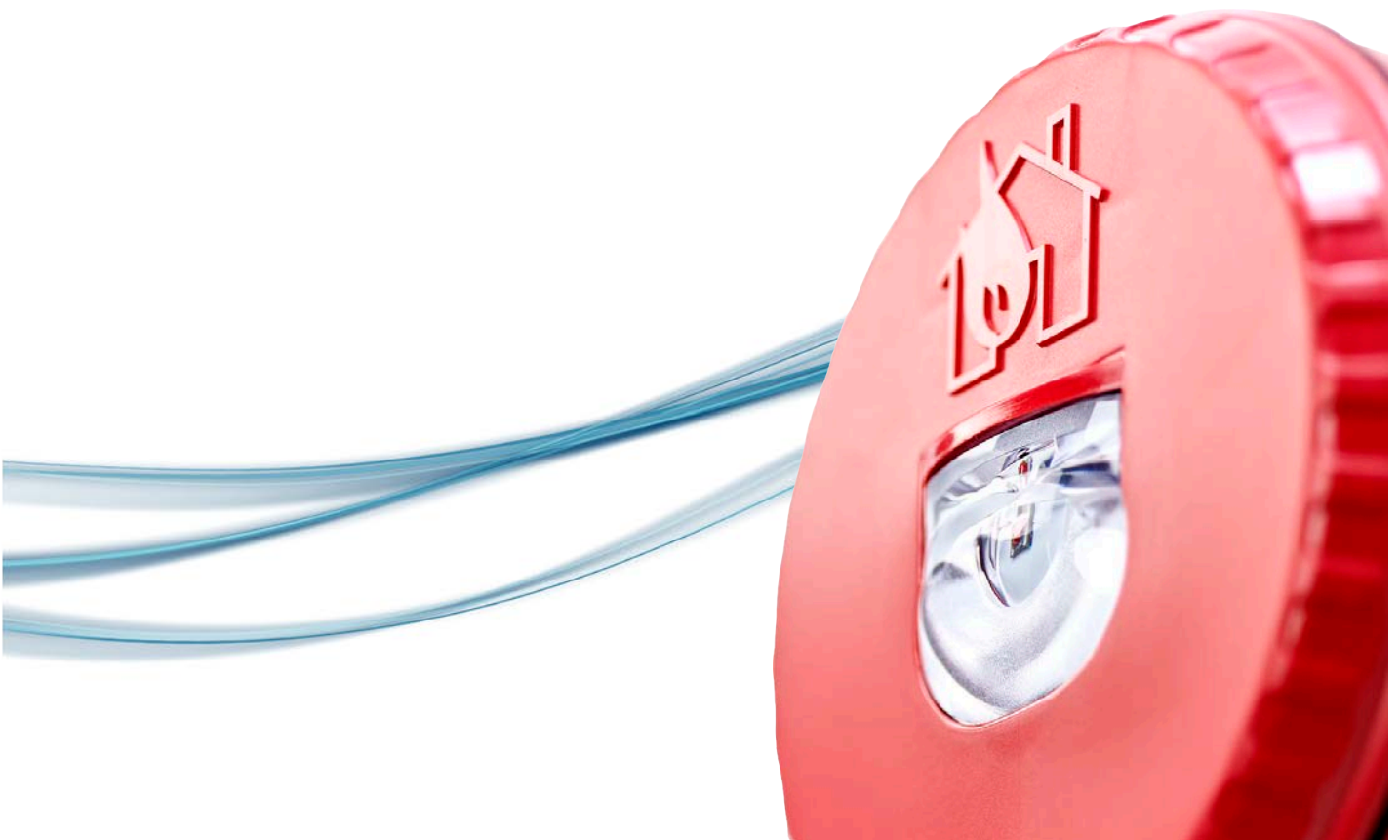
Panasonic NMAST communication technology provides high noise immunity – ideal for installations in heavy industry, power plants, hospitals and universities where noise can have a negative impact on fire detection.

Multi-master configuration

Control panels can be connected in a multi-master arrangement, with up to 30 panels allowing wide distribution throughout premises.

Gateway integration

With Panasonic fire alarm systems, it's possible to install a Gateway inside the control panel, allowing full access over TCP/IP.



THE COMPREHENSIVE SOLUTION TO A CRITICAL BUSINESS RISK

While all buildings are required by law to install some form of fire detection system, it takes more than a simple alarm to provide the security and safety a business requires. Panasonic's solutions are designed to provide all-round protection in every professional setting – and are now available in combination with Panasonic security camera systems. This combination of alarm sensors and Full HD video images creates a comprehensive security and monitoring solution that safeguards both premises and the continued operation of large-scale businesses and organisations.



Solutions for healthcare



To protect patients, staff, premises and the life-saving equipment inside, Panasonic has developed a range of fire alarm solutions with the precise requirements of hospitals in mind. A range of programmable functions, intelligent algorithms and the ability to monitor multiple zones mean early, safe and reliable fire detection and prevention is achieved, in the most critical of environments.

Solutions for data centers



Data centers and service halls often contains the most critical assets in any operation. Protection of these business critical systems require the earliest possible detection of hazards, which is exactly what Panasonic can provide.

Solutions for logistic



Complex storage solutions, dusty environments, big variations in temperature and airflow and sometimes even freeze rooms with temperatures down to -25 degrees. These are challenges where Panasonic's robustness has proved to be ideal



Solutions for industry



Time lost due to either the outbreak or false reporting of fire can be, at best, damaging and, at worst, disastrous for the managers of industrial sites and power plants. Thanks to the flexible, multi-zone, intelligent capabilities of Panasonic's fire solutions, however, this risk can be mitigated, with systems capable of operating in the specific and often unique surroundings of industrial premises.

Solutions for transportation



Real-time security evaluation is essential in crowded places such as airports and train stations to provide the necessary prevention to ensure a high quality service that provides safety to millions of daily passengers. Panasonic technologies adapt to each environment offering a more customised solutions.

Solutions for education



With the challenge of maintaining safety and ongoing operation across multiple sites, universities require the best possible fire detection and prevention solutions. Panasonic provides both, with proven reliability and cutting-edge technology able to deliver the level of protection needed to safeguard students and staff, and avoid the unnecessary expense and inconvenience of nuisance alarms.

FIRE ALARM SYSTEMS

EBL512 G3



General

EBL512 G3 is an analog addressable fire alarm system which is used with analog addressable detectors, inputs and outputs as well as conventional detectors. It fulfills the EN54 standards: EN54 part 2 (Control and indicating equipment) and EN54 part 4 (Power supply) and EN54 part 13 (System compatibility). Detectors, manual call points, and general input and output units for free programmable customer specific functions can be connected to the COM loops.

EBL512G3: a unique concept for early and safe detection without nuisance alarms

EBL512 G3 is a new generation of fire alarm system. With a unique functionality in cooperation with detectors that adapt to the surrounding environment, self-diagnostic and interactivity, the system is suitable for most premises.

Each analog smoke detector in the system is individually adapted to the surrounding environment. The sensitivity of each analog detector is constant in spite of the individual contamination or background particle level. The long-term changes are, for example, distinguished from the short-term changes of a smouldering fire.

Intelligent alarm algorithms to detect smouldering fires. The self-diagnostics function is a result of a unique algorithms that detects every deviation from the accurate normal condition in the electronics and in the detection chamber.

The interactivity function uses information from one, two or more detectors in the system to increase reliability in detection of a real fire.

A family of state of the art analog detectors gives the c.i.e accurate and noise-free information about occurrence of smoke and/or temperature changes in the installation.

The control panel is prepared for remote surveillance and operation. Data can be access from PC, tablet, or smart phone.



FIRE ALARM SYSTEMS

EBL512 G3



The EBL512 G3 fire alarm system have a set of functions that meet the most stringent requirements relating to fire detection and fire prevention measures.

- A large number of fire detection algorithms are supported by the system and can be set individually for each analog detector.
- Alert annunciation. The output for the alarm transmitter can be delayed for immediate on-site investigation of a fire alarm.
- Detectors, zones, programmable outputs and outputs for the alarm transmitter can be individually disabled.
- Internally and/or externally controlled time channels. E.g. one or more alarm points may be disabled via an external timer.
- User programmable outputs can be programmed in a very flexible way enabling control of sirens, fire doors, extinguishing systems, etc.
- Up to 30 Display units can be connected to each c.i.e.
- Display of the actual system status in a PC or Tablet via a Gateway connected to an intranet (LAN) or the Internet.
In the event of fire alarm, service signal, etc. an e-mail can be sent to the appropriate personnel. Also provides two-way communication to an external computer system like a building management system or security systems.



FIRE ALARM SYSTEMS

CONTROL AND INDICATING EQUIPMENT C.I.E.



EBL512 G3

Features

EBL512 G3 – the third generation of the intelligent analog addressable system.

Up to 1020 addresses – of which up to 512 can be used for alarm points (EN-54), remaining addresses can be used for alarm devices, I/O units etc.

Redundant network for up to 30 control units with two TLON networks.

Supports auto-addressing to simplify commissioning.

Type numbers

5000: EBL512 G3 c.i.e. with or without a printer. Supplied with a standard mounting plate approved for an incombustible wall (e.g. concrete).

5001: EBL512 G3 c.i.e. Control panel without front or display. To be used in networks with at least one type 5000. Supplied with a standard mounting plate approved for an incombustible wall (e.g. concrete).

4580: 8 zones expansion board (8 zone line inputs for conventional detectors)

4581: 8 relays expansion board (8 programmable relay outputs)

4583: Supervised in- and outputs expansion board. 3 outputs and 5 inputs

5089: Connection cable for up to six expansion boards (4580-4583)

5088: Gateway for connection of the fire alarm system to an intranet or the internet

5090: TLON connection board – required for a TLON network. Two boards in each c.i.e. for redundant network

5020: Mounting plate for 19" mounting rack. For one 5000 / 5001

5013: Cabinet for drawings



FIRE ALARM SYSTEMS

TLON - NETWORK FOR EBL512 G3



Features

EBL512 G3 can be used as a stand-alone c.i.e. or connected to a TLON network.

TLON is a local network that connects a system of two or more EBL512 G3 control units.

The control panels can be connected in a multi-master configuration with up to 30 panels, allowing a wide distribution throughout the premises and up to 30,600 devices.

TLON Manager 2.0 is the software with which a TLON project is created, and installed into the control units. TLON Manager is also used for maintenance of the TLON Network.

TLON is a redundant network, for maximum security.

With a LonWorks Internet server it is possible using internet (or any IP-based LAN or WAN) as a pathway for TLON.



FIRE ALARM SYSTEMS

DISPLAY UNIT



DISPLAY UNIT 5054

Features

- Selectable function as Presentation unit, Firebrigade panel, or Alert annunciation unit.
- Color touch screen 10.1".
- Multi language support.
- Up to 30 units can be connected to a C.I.E and up to 1 200 meters to the farthest display unit.

Type numbers

5054: Display unit



DISPLAY UNIT METAL CABINET 5055

Features

- Metal cabinet for build in of Display unit 5054.
- Key required for safety.
- To be used in Fire brigade panel applications.

Type numbers

5055: Display unit metal cabinet

FIRE ALARM SYSTEMS

ANALOG / ADDRESSABLE DETECTORS



ANALOG BASE 3312

Features

- Common base for the different analog detectors.
- Screw connectors including output for external LED.
- Label holder recess.
- Available in grey or white.

Type numbers

3312: Analoge base

3390: Label holder (100 holders per packet, excluding labels)

3391: Labels for 3390 (10 sheets á 132 labels)



ANALOG BASE 3312F / FL

Features

- Common base for the different analog detectors.
- Fast connectors.
- Label holder recess.
- Available in grey or white.

Type numbers

3312F: Analog base with fast connectors for the COM loop

3312FL: Analog base with fast connectors for the COM loop and fast connector for external LED (2218)

3390: Label holder (100 holders per packet, excluding labels)

3391: Labels for 3390 (10 sheets á 132 labels)



ANALOG BASE WITH ISOLATOR 4313

Features

- Common base for addressable detectors.
- Built-in short-circuit isolator.
- Screw terminals for easy installation of any cable type.
- One External Indicator (LED) can be connected to the base.
- Cable entry from top or side.
- Label holder recess.
- Available in grey or white.

Type numbers

4313: Analog base with isolator

3390: Label holder (100 holders per packet, excluding labels)

3391: Labels for 3390 (10 sheets á 132 labels)

FIRE ALARM SYSTEMS

ADVANCED MODE - ARTIFICIAL INTELLIGENCE

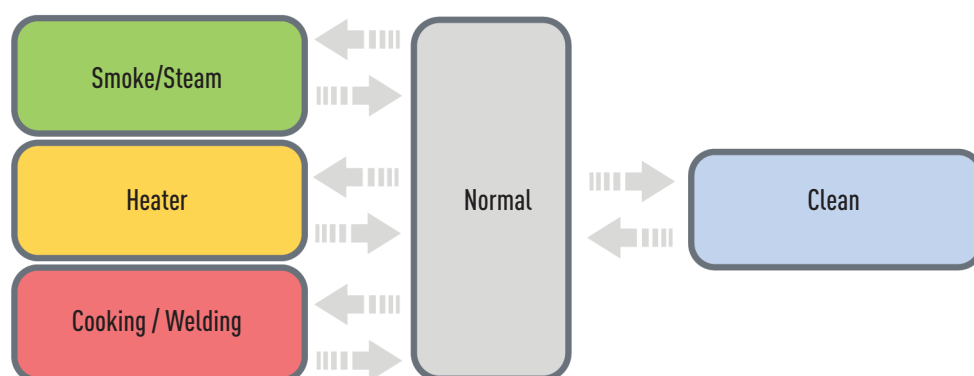
A unique learning function for optimised detection

By constant analysis of the environment and based on artificial intelligence, Panasonic is providing optimal detection performance in all environments.

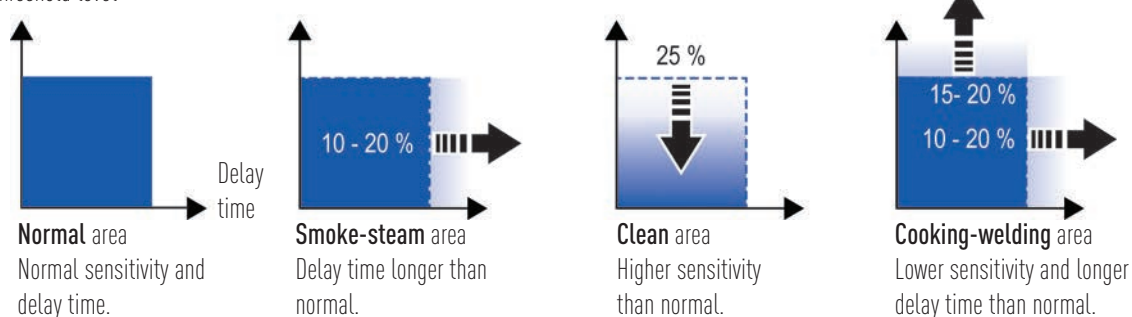
From the day the detector is installed and as long as it is in use it will monitor and evaluate the environment and automatically select the most suitable algorithm.

Switching between the different VdS approved detection algorithms is based on large amounts of sensor data to eliminate the influence of short disturbances. A minimum of 36 hours and up to 20 days of consistent data is required for a change.

Of course we also provide the possibility to manually select the algorithm, for cases when you are sure what kind of environment the detector will be in.



Fire alarm threshold level





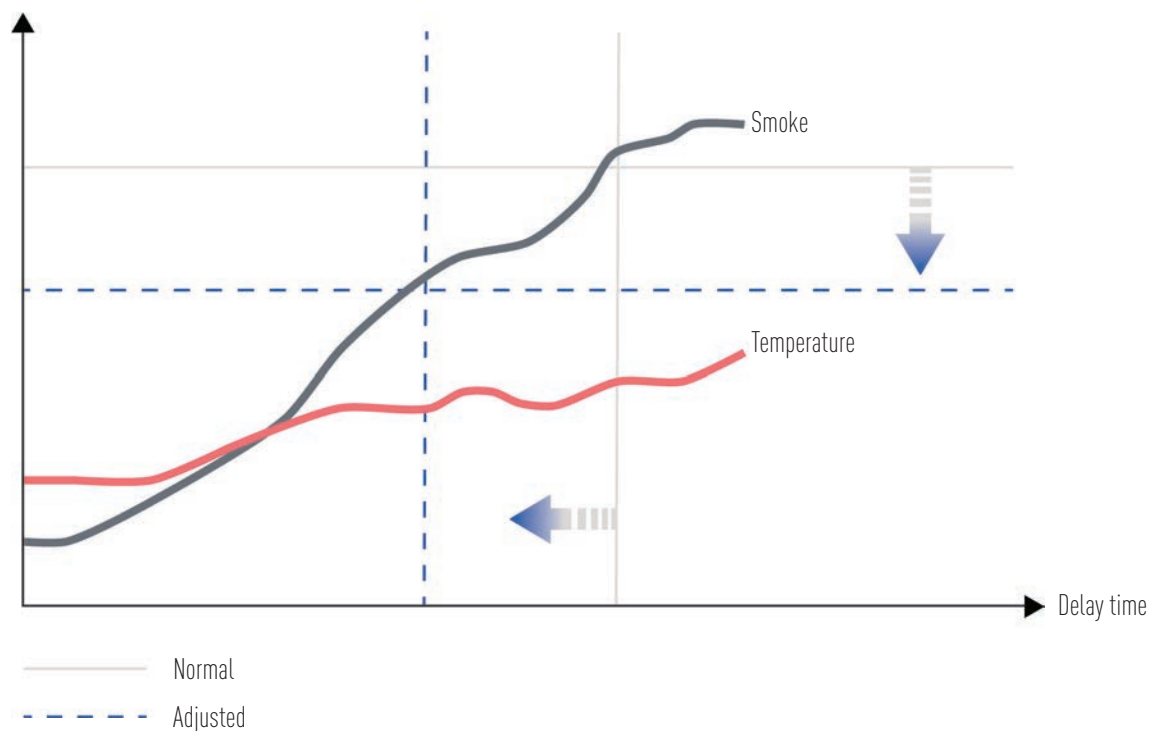
Highest safety and minimised risk for false alarm

With variable sensitivity and time delay Panasonic's detectors provides the highest safety combined with a minimised risk for false alarms.

In each of the algorithms there is a variable alarm level and also a variable time delay. The detector dynamically adjusting the alarm level and time delay, based on how the smoke density level and temperature changes before the standard alarm level is reached.

If we are sure that it is a real fire, we lower the alarm level and remove any delays and give a clear alarm as fast as possible. If the smoke development is not clearly corresponding to a real fire, we allow the detector some additional time to evaluate the situation to avoid an unwanted nuisance alarm.

Fire alarm threshold level



- Minimized risk for false alarms.
- A learning function will ensure that the most suitable fire alarm algorithm is always used.
- Variable sensitivity and time delay based on smoke density changes just before and after fire alarm level has been reached.
- All algorithms are tested and approved by VdS.
- Automatic service signal to minimise maintenance cost.

FIRE ALARM SYSTEMS

ANALOG / ADDRESSABLE DETECTORS WITHOUT ISOLATOR



ANALOG MULTIDETECTOR 4400

Features

- State of the art detector for highest safety.
- Detection by combination of smoke and heat.
- Nuisance alarms reduced by up to 46% by using Advanced mode:
 - Variable sensitivity and time delay based on smoke and temperature changes just before and after fire alarm level has been reached.
 - A learning function will ensure that the most suitable fire alarm algorithm is always used.
 - High-tech mesh net prevents dust and insects to enter the detection chamber.
 - Automatic service signal to minimise maintenance costs.
- Available in grey or white.

Type numbers

4400: Analogue multi detector



ANALOG PHOTOELECTRIC SMOKE DETECTOR 4401

Features

- State of the art detector for highest safety.
- Nuisance alarms reduced by up to 46% by using Advanced mode:
 - Variable sensitivity and time delay based on smoke changes just before and after fire alarm level has been reached.
 - A learning function will ensure that the most suitable fire alarm algorithm is always used.
 - High-tech mesh net prevents dust and insects to enter the detection chamber.
 - Automatic service signal to minimise maintenance cost.
- Available in grey or white.

Type numbers

4401: Analog photoelectric smoke detector



ANALOG MULTI DETECTOR WITH CO 4402

Features

- State of the art detector for highest safety.
- Detection by heat, heat and smoke, or smoke and CO.
- Distinguished between a real fire and nuisance alarm with highest security available.
- Ideal for environments with non-fire smoke, for example theaters, discotheques and oil-mist.
- High-tech mesh net prevents dust and insects to enter the detection chamber.
- Automatic service signal to minimise maintenance cost.
- Available in grey.

Type numbers

4402: Analog multi detector with CO



ADDRESSABLE SOUNDER BASE 3379

Features

- For installation where an alarm device is required in the same room as a detector.
- Three different sound or priority levels.
- Connected directly on the COM loop.
- Programmable for any kind of trigger condition.
- Available in grey or white.

Type numbers

3379: Addressable sounder base



ANALOG HEAT DETECTOR 3308

Features

- State of the art detector for highest safety.
- Algorithms for classes A1, A2S, and BS included.
- Selections via EBLWin.
- Possible to have both regular and alternative algorithms for highest security without nuisance alarms.
- Available in grey or white.

Type numbers

3308: Analog heat detector



ENCLOSED ANALOG HEAT DETECTOR 3309

Features

- State of the art detector for highest safety.
- Algorithms for classes A1, A2S, and BS included.
- Selection via EBLWin.
- Waterproof - IP67.
- Possible to have both regular and alternative algorithms for highest security without nuisance alarms.
- Connectors for external indicator.

Type numbers

3309: Enclosed analog heat detector

FIRE ALARM SYSTEMS

ANALOG / ADDRESSABLE DETECTORS WITH ISOLATOR



ANALOG MULTI DETECTOR WITH ISOLATOR 4400I

Features

- State of the art detector for highest safety.
- Detection by combination of smoke and heat.
- Built-in short circuit isolator.
- Nuisance alarms reduced by up to 46% by using AI.
- A learning function will ensure that the most suitable fire alarm algorithm is always used.
- Installation date and automatic service signal.
- Available in black or white.

Type numbers

4400I: Analog multidetector with isolator



ANALOG SMOKE DETECTOR WITH ISOLATOR 4401I

Features

- State of the art detector for highest safety.
- Built-in short circuit isolator.
- Nuisance alarms reduced by up to 46% by using AI.
- A learning function will ensure that the most suitable fire alarm algorithm is always used.
- Installation date and automatic service signal.
- Available in white.

Type numbers

4401I: Analog smoke detector with isolator



ADRESSABLE EXTERNAL INDICATOR 4418

Features

- Connects to loop.
- Advanced mode - Control expression.
- Normal mode - Mirrors detector LED.
- For wall or flush mounting.
- Low power consumption.

Type numbers

4418: Addressable external indicator (LED)

FIRE ALARM SYSTEMS

ANALOG / ADDRESSABLE DETECTORS WITH ISOLATOR



BASE FOR ISOLATOR DETECTOR 4412F

Features

- 3-terminal base for isolator detector.
- Fast connectors for quickest installation available.
- Connector for shield.
- Connector for extra cable pair (e.g 24 V).
- Cable entry from top or side.
- Recess for label holder.
- Available in black or white.

Type numbers

4412F: Base for isolator detector



ADDRESSABLE SOUNDER BASE 4479

Features

- 3-terminal sounder base for isolator detector.
- 7 tones, 90 dB.
- Low power mode 84 dB at 1.5 mA in active mode.
- Fast connectors for quickest installation available.
- Connector for loop, shield, and extra cable pair (e.g 24 V).
- Cable entry from top or side.
- Available in black or white.

Type numbers

4479: Addressable sounder base

4489: Ingress protection

ADDRESSABLE SOUNDER BASES



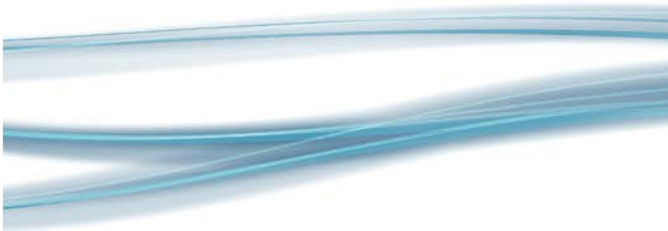
4479-B + 4400I-B



3379W + 4383 + 4401W



4479 + 4400I



FIRE ALARM SYSTEMS

ANALOG WIRELESS SYSTEM

Ideal in buildings where it is difficult to hide cables and where extensions are required.

- Very easy to install.
- Low installation cost.
- Sniffer tool for easy and secure comissioning.
- Complete system.
- 6 years battery life gives low mainentance cost.
- Approved according to EN54-7, EN54-17, EN54-18, and EN54-25.

Solutions for historical buildings



Ideal in buildings where it is difficult to hide cables, or where cabling may not be allowed. Hotels, restarants, sanctuaries, and museums.

Solutions for small businesses



Excellent when existing installations must be completed or extended. Or for new, small installations. Schools, shops, markets, banks, cafes, hotels.



FIRE ALARM SYSTEMS

ANALOG WIRELESS SYSTEM



WIRELESS PHOTOELECTRIC SMOKE DETECTOR 4611

Features

- Ideal in buildings where it is difficult to hide cables and where extensions are required.
- Built-in sounder.
- Up to 170 m transmission range (open air) and 6 years battery life.
- Highly flexibility: Up to 256 wireless detectors per c.i.e.
- Available in white.

Type numbers

4611: Wireless photoelectric smoke detector



WIRELESS MANUAL CALL POINT 4614

Features

- Ideal in buildings where it is difficult to hide cables and where extensions are required.
- Up to 170 m transmission range (open air) and 6 years battery life.
- Highly flexibility: Up to 4 base stations on each COM loop and up to 16 wireless units on each base station.

Type numbers

4614: Wireless manual call point



WIRELESS LOCAL ALARM ACKNOWLEDGE UNIT 4645

Features

- Eliminates unnecessary alarms in the system and to the fire brigade.
- Suitable for apartments or similar locations.
- Installed together with a smoke detector.
- If the detector goes into alarm the sounder is activated and the LED is lit. The user pushes the button within 30 seconds (configurable) and then gets 3 minutes (configurable) to ventilate the smoke from the room.

Type numbers

4645: Wireless local alarm acknowledge unit



ADDRESSABLE BASE STATION FOR WIRELESS UNITS 4620

Features

- Ideal in buildings where it is difficult to hide cables and where extensions are required.
- Up to 170 m transmission range (open air).
- Highly flexibility: Up to 4 stations on each COM loop and up to 16 wireless units on each base stations.
- Built-in short circuit isolator.
- The base station has two built-in antennas.

Type numbers

4620: Addressable Base Station for wireless units



WIRELESS SNIFFER 4613

Features

- Highly recommended as a help during planning, installation, and commissioning of the wireless system.
- Checks the background noise.
- Checks the signals between a base station and its wireless units.
- Verifies that the standard EN54-25 is fulfilled.

Type numbers

4613: Wireless sniffer

FIRE ALARM SYSTEMS

UNITS FOR HAZARDOUS (EX) AREAS - ANALOG DETECTORS

 II 1 G Ex ia IIC T5 Ga



INTRINSICALLY SAFE (IS) ANALOG PHOTOELECTRIC SMOKE DETECTOR 2840

Features

- Addressable intrinsically safe optical smoke detector for fire detection in hazardous areas.
- Up to 20 detectors can be connected to each IS barrier unit.
- Six advanced alarm algorithms available.



INTRINSICALLY SAFE (IS) ANALOG HEAT DETECTOR 2841

Features

- Addressable intrinsically safe heat detector for fire detection in hazardous areas.
- IP66/67 for outdoor use or in humid areas.
- Up to 20 detectors can be connected to each IS barrier unit.
- Three standard heat detection algorithms available.



INTRINSICALLY SAFE (IS) BARRIER UNIT 2842

Features

- Barrier unit for addressable intrinsically safe fire detectors in hazardous areas.
- Barrier unit connects directly on the loop and is mounted outside Ex area.
- Up to 20 detectors can be connected to each IS barrier unit.
- IP66/67 for outdoor use or in humid areas.



Type numbers

2840: Intrinsically safe Analog photoelectric smoke detector

2841: Intrinsically safe Analog heat detector

2842: Intrinsically safe Barrier unit (including five compression glands)

2843: Intrinsically safe back-box for 2840 and 2841.
Including two compression glands.

FIRE ALARM SYSTEMS

ANALOG / ADDRESSABLE ASPIRATING DETECTORS



ASPECT ADDRESSABLE - GRIZZLE DETECTOR AE2010G-P

Features

- Extremely reliable in humid and dusty environments.
- Self calibrating without any need for manual adjustments.
- Easily dimensioned with the help of a PC program.
- Installation and monitoring by smartphone app.
- Constant and high sensitivity.
- Up to 2 x 100 meter pipe length - Class B.
- Up to 4 x 100 meter pipe length - Class C

Type numbers

AE2010G-P: Aspect Addressable-Grizzle



ASPECT ADDRESSABLE - LAZEER DETECTOR AE2010L-P

Features

- Developed for early warning in clean rooms with high demands to quick detection of smoke and fire gases.
- Lazeer indicates presence of smoke in three preset levels, and can be configured to raise the alarm at any one of these levels.
- 1x100 meter pipe length.
- Self calibrating without any need at all for manual adjustments.
- Constant and high sensitivity - Class A.

Type numbers

AE2010L-P: Aspect Addressable-Lazeer



THUB - MOUNTING CONSOLE

Features

- Avoid dirt into detector during building phase
- Pre-install the pipeline.
- Easily snap-on ASPECT when pipeline installation is ready.
- Built-in water reservoir (2cl) with automatic heating to evaporate the water.

Type numbers

THUB: Mounting console



ELOCLEAN

Features

- Used for easy and safe cleaning of aspiration pipes by air pressure.
- ELOCLEAN is intended for installations with extremely dusty environments.
- Automatic Cleaning process, configurable from 1-7 times/week.
- The process can also be started manually.
- The process can be controlled from the C.I.E or other equipment, via input.

Type numbers

ELOCLEAN: Cleaning of aspiration pipes



VULCAN CYCLONE FILTER VF 250 com

Features

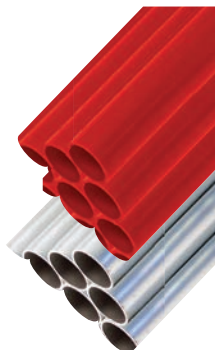
- Installed before ASPECT to remove both dust and condensation from the sampled air before it enters the detection chamber.
- Used in rooms with extreme amounts of dust.
- It has been carefully designed to not increase transport time by more than five seconds.

Type numbers

VF 250 com: Vulcan cyclone filter

FIRE ALARM SYSTEMS

ANALOG / ADDRESSABLE ASPIRATING DETECTORS



PIPES

Features

- An internal Ra value of 1.6 contributes to avoid buildup of dust in the pipeline, and to ensuring optimal functionality with respect to transportation of smoke.
- No glue is needed, as the socket is conical and supplied with a sealing agent inside.

Type numbers

PL 253P: Plastic pipes 13 pieces x 4 meters

AL 250: Aluminium pipe 4 meters

SK 253: Socket with a pre-glued inside for simple and fast mounting of the pipes

BE 253: 90°, bend with a pre-glued inside for simple and fast mounting



SNIFFER SN 258 M

Features

- Sniffers are the extended arms of the pipeline, able to be stretched through ceilings from church lofts and such. This way, the pipeline may be hidden, and the system appears as virtually invisible.
- A outer steel screen to protect from mice and other pets.

Type numbers

SN258 M: Sniffer 0.75 meter sampling point.
With outer steel screen

SN253 P: Sniffer 3 meter sampling point



ELOCUT

Features

- The pipes are delivered in 4 m segments that may be cut to length where needed to minimise waste. To ensure clean cuts with no burrs, use the ELOCUT cutting tool.

Type numbers

ELOCUT: Pipe cutter



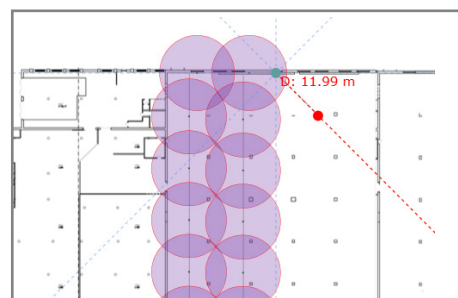
EXHAUST KIT AU002

Features

- For leading exhaust air back into rooms to balance the air pressure.
- Reduces noise from the detector fan down to 45dB.
- Used in rooms with very high amount of dust.

Type numbers

AU002: Exhaust kit



PIPEDRAW

Features

- With PipeDraw you can design your Aspect project on an imported drawing.
- The application will calculate the optimal hole position, hole size, and response time.
- Drawings created by PiepDraw shows the area coverage per hole.
- It will also generate a shopping list.

FIRE ALARM SYSTEMS

CONVENTIONAL DETECTORS / UNITS FOR ZONE LINE INPUTS



**COMBINATION HEAT
DETECTOR 4318**

Features

- State of the art combination heat detector.
- Both fixed temperature and rate-of-rise function Class A1R.
- Available in grey or white.

Type numbers

4318: Combination heat detector



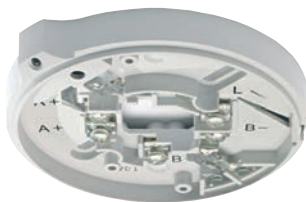
**PHOTOELECTRIC SMOKE
DETECTOR 4452**

Features

- State of the art detector for highest safety.
- Nuisance alarms reduced by up to 46% by using variable sensitivity and time delay based on smoke changes just before and after fire alarm level has been reached.
- A learning function will ensure that the most suitable fire alarm algorithm is always used.
- High-tech mesh net prevents dust and insects to enter the detection chamber.
- Available in grey or white.

Type numbers

4452: Photoelectric smoke detector



BASE 2324

Features

- Common base for conventional detectors.
- Screw terminals for easy installation of any cable type.
- External indicator (LED) can be connected to the base.
- Built-in LED that is activated when the detector goes into alarm stage.
- Available in grey or white.

Type numbers

2324: Base (for conventional detectors)

FIRE ALARM SYSTEMS

BEAM DETECTORS AND FLAME DETECTORS



FIRERAY ONE

Features

- Reflective beam detector with industry leading optics.
- One minute auto alignment.
- Detection range between 5 and 120 meters.
- Motorised for automatic building movement compensation.
- Contamination compensation.
- Configurable sensitivity.

Type numbers

3411: Reflective beam detector Fireray One



FIRERAY 3000

Features

- Ideal for use when the line of sight is narrow or in buildings with reflective surfaces.
- End to End beam detector with industry leading optics.
- Low level system controller for up to two detectors.
- Configurable for range between 5 and 120 meters.
- Laser alignment for fast installation.
- Patented light cancellation technology for minimised false alarm risk.

Type numbers

3406: End to end beam detector Fireray 3000



FIRERAY 5000

Features

- Reflective beam detector with industry leading optics.
- Low level system controller for up to two detectors.
- Configurable for use between 8 and 100 meters.
- Integral laser and beam alignment for fast installation.
- Motorised for automatic building movement compensation.
- Contamination compensation.

Type numbers

3405: Reflective beam detector Fireray 5000



Flame detector UV/IR2 3408

Features

- Highest immunity to false alarms.
- Suitable also for outdoor areas.
- Proven response to multi type fuels.
- Selectable sensitivity levels.
- Selectable response speed.
- Optical self-test.

Type numbers

3408: Flame detector Talentum UV/IR2 Talentum



Flame detector IR3 3407

Features

- Excellent immunity to false alarms.
- Multi spectrum detection.
- High sensitivity also in contaminated environments.
- Selectable sensitivity levels.
- Selectable response speed.
- Built in auto and manual test.

Type numbers

3407: Flame detector IR3 Talentum



Flame detector IR3 Exd 3412

Features

- Excellent immunity to false alarms.
- Suitable for use in Zone 1, 21, 2 and 22.
- Multi spectrum detection.
- High sensitivity also in contaminated environments.
- Selectable sensitivity levels.
- Selectable response speed.
- Built in auto and manual test.

Type numbers

3412: Flame detector IR3 Exd Talentum

FIRE ALARM SYSTEMS

CONVENTIONAL DETECTORS / UNITS FOR HAZARDOUS AREAS



INTRINSICALLY SAFE MANUAL CALL POINT 2814

Type numbers

2814: Intrinsically safe manual call point (incl back-box and transparent protection flap)

UNITS FOR HAZARDOUS (EX) AREAS - CONVENTIONAL DETECTORS

Features

- The intrinsically safe manual call point is connected to a Galvanic isolator (2820).
- The Galvanic isolator (2820) can be connected to a conventional zone line input or to an I/O unit 3361 connected to a COM loop.

Type numbers

2822: Isolated zone interface (including waterproof box and four compression glands)

2820: Galvanic isolator (including waterproof box and four compression glands)



ENCLOSED HEAT DETECTOR 6295, 6296, 6297, 6298

Features

- State of the art detector for highest safety.
- IP67 for outdoor use or in humid areas.
- High temperature range for difficult environments.
- Fixed alarm temperatures (60/80/100/120°C).
- Intrinsically safe for hazardous areas with ambient temperatures up to 65°C.

Type numbers

6295: Enclosed heat detector, class A2 S

6296: Enclosed heat detector, class B S

6297: Enclosed heat detector, class C S

6298: Enclosed heat detector, class E S

FIRE ALARM SYSTEMS

ADDRESSABLE COM LOOP UNITS



ADDRESSABLE MANUAL CALL POINT 4433

Features

- Built-in short circuit isolator.
- Attractive design compliant with EN54-11.
- Test key for routine testing without breaking the glass element.
- Protection against accidental operation.

Type numbers

4433: Addressable manual call point with isolator

2347: Replacement glass (10 pcs.)

2348: Replacement polycarbonate cover (10 pcs.)



ENCLOSED ADDRESSABLE MANUAL CALL POINT 4439

Features

- Built-in short circuit isolator.
- Attractive design compliant with EN54-11.
- IP rating IP66.
- Test key for routine testing without breaking the glass element.
- Protection against accidental operation.

Type numbers

4439: Addressable manual call point

2347: Replacement glass (10 pcs.)

2348: Replacement polycarbonate cover (10 pcs.)



I/O UNIT WITH ISOLATOR 4461

Features

- Built-in isolator.
- One Zone line input.
- One monitored input.
- One Optocoupler input.
- Two Relay outputs.
- IP65 housing.

Type numbers

4461: I/O unit with isolator



DUAL INPUT UNIT WITH ISOLATOR 4462

Features

- Built-in isolator.
- Two monitored input.
- IP65 housing.

Type numbers

4462: Dual input unit with isolator

FIRE ALARM SYSTEMS

ADDRESSABLE COM LOOP UNITS



EXTERNAL POWER SUPPLY 4466

Features

- Monitored for mains, charging, and communication errors.
- Space for two expansion boards of type 4464 and 4585.
- Built in short circuit isolator.
- Automatically 4 A output at fire alarm.
- Space for 7.2 Ah batteries inside housing.
- Up to 42 Ah in external battery cabinet (5014).

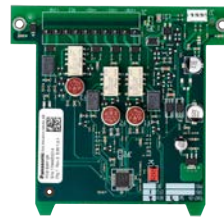
Type numbers

4466: External power supply

4464: 2 voltage outputs board

4585: COM-loop repeater

5014: Cabinet for batteries



COM-LOOP REPEATER 4585

Features

- One new 350mA loop per expansion board.
- To be mounted in external power supply 4466.
- Supports auto-addressing.
- Up to 16 extra COM loop per control unit.
- Up to 1100 m long extra loop.



2 VOLTAGE OUTPUTS BOARD 4464

Features

- Expansion board for external power supply
- To be mounted in external power supply 4466
- Supports auto-addressing
- 2 monitored voltage outputs (2 A each)
- 1 special voltage output for fire door closing
- 1 generic input

FIRE ALARM SYSTEMS

ADDRESSABLE COM LOOP UNITS - ALARM DEVICES



ADDRESSABLE WALL VAD WITH ISOLATOR 4480

Features

- Built-in short circuit isolator.
- Flash rate 0.5 Hz or 1 Hz.
- Coverage 2.4 x 5 x 5 meters.
- Connected directly on the COM loop.
- Available in red or white.

Type numbers

4480: Addressable wall VAD with isolator



ADDRESSABLE CEILING VAD WITH ISOLATOR 4481

Features

- Built-in short circuit isolator.
- Flash rate 0.5 Hz or 1 Hz.
- Coverage 3 x Ø7.3 meters.
- Connected directly on the COM loop.
- Available in red or white.

Type numbers

4481: Addressable ceiling VAD with isolator



ADDRESSABLE VAD WITH SIREN AND ISOLATOR 4482

Features

- Built-in short circuit isolator.
- Flash rate 0.5 Hz or 1 Hz.
- Coverage 2.4 x 5 x 5 meters.
- High sound output but low current consumption.
- Seven different tones and three priority levels.
- Connected directly on the COM loop.
- Available in red or white.

Type numbers

4482: Addressable VAD with siren and isolator



ADDRESSABLE SIREN WITH ISOLATOR 4487

Features

- Built-in short circuit isolator.
- High sound output but low current consumption.
- Seven different tones and three priority levels.
- Connected directly on the COM loop.
- Available in red or white.

Type numbers

4487: Addressable siren with isolator

FIRE ALARM SYSTEMS

CONVENTIONAL ALARM DEVICES



**UNIVERSAL CALL POINT /
IP MANUAL CALL POINT IP66**

Features

- Choice of glass or plastic elements.
- Changeover contacts.
- Potted waterproof option - IP66.
- Flag on re-settable element.

Type numbers

4920016FULL-0018XC: Universal call point

4920047FULL-0420X: IP Manual call point
IP66



RED BELL 24V 6"

Features

- High sound output, up to 95dB(A).
- Classic design.
- Simple installation.
- For fire or non fire use.

Type numbers

521601FULL-1601: Red bell



**ROLP SHALLOW SOUNDER
(Roshni Low Power)**

Features

- 32 selectable tones.
- 102 dB(A).
- 12 mA active.

Type numbers

540501FULL-0389XE: RoLP shallow
sounder



**ROLP DEEP SOUNDER
(Roshni Low Power)**

Features

- 102dB(A) sound output.
- 32 tones (user selectable).
- Two stage alarm.
- Automatic synchronisation.

Type numbers

540503FULL-0403XE: RoLP deep sounder



**ROLP LX WALL
(Roshni Low Power)**

Features

- Ultra low current consumption.
- RoLP and RoLP Maxi sounder options.
- Up to 7.5m coverage volume (switchable to 2.5m).
- 0.5 or 1Hz flash rate.
- Red flash.

Type numbers

8500025FULL-0025X: RoLP LX wall



SYMPHONI SOUNDER RED

Features

- Perfect for large installations.
- 100 dB (A).
- Ultra low power consumption; 5 mA.

Type numbers

650001FULL-0003X: Symphoni sounder red



SYMPHONI LX

Features

- 32 selectable tones.
- Ultra low current consumption.
- Up to 7.5m coverage volume (switchable to 2.5m).
- 0.5 or 1Hz Flash rate.
- Coverage switch to 2.5m.

Type numbers

8500045FULL-0045X: Symphoni LX



SYMPHONI LX WALL WP

Features

- 32 selectable tones.
- Ultra low current consumption.
- Up to 7.5m coverage volume (switchable to 2.5m).
- 0.5 or 1Hz Flash rate.
- Coverage switch to 2.5m.
- IP66.

Type numbers

8500060FULL-0060X: Symphoni LX wall WP



SOLEX XENEON BLUE

Features

- Three selectable light output levels.
- User selectable flash rates.

Type numbers

531043FULL-0090: Solex xeneon blue



SOLISTA WALL LX

Features

- Ultra low current consumption of 10mA.
- Up to 7.5m room coverage.
- 0.5Hz or 1Hz flash rate.
- Coverage switch to 2.5m.

Type numbers

812013FULL-0114X: Solista wall LX



SOLISTA CEILING LX

Features

- Ultra low current consumption of 10mA.
- Up to 7.5m coverage volume.
- 0.5Hz or 1Hz Flash rate.
- Coverage switch to 3m.

Type numbers

812022FULL-0123X: Solista ceiling LX



FLASHNI XE

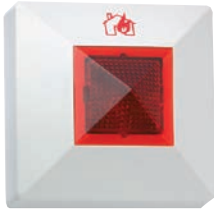
Features

- High output sounder beacon 101 dB(A).
- IP65.

Type numbers

640016FULL-0011: Flashni XE Sounder with Xenon Beacon

FIRE ALARM SYSTEMS ACCESSORIES



EXTERNAL INDICATOR (LED) 2218

Features

- Selectable light intensity makes it ideal for both analog and conventional detectors.
- Low power consumption.
- For wall or flush mounting.

Type numbers

2218: External indicator (LED)



ADDRESSABLE LOCAL ALARM ACKNOWLEDGE UNIT 4445

Features

- Eliminates unnecessary alarms in the system and to the fire brigade.
- Suitable for apartments or similar locations.
- Installed together with a smoke detector and a sounder base or a wireless detector.
- If the detector goes into alarm the sounder is activated and the LED is lit. The user pushes the green button within 30 seconds (configurable) and then gets 3 minutes (configurable) to ventilate the smoke from the room.

Type numbers

4445: Addressable local alarm acknowledge unit



LIGHT INDICATOR 4383

Features

- The indicator is used as a complement to audible alarm devices.
- No cabling required.
- Light is visible 360°.
- One External Indicator (LED) can be connected to the base.
- Programmable for any kind of trigger condition.

Type numbers

4383: Light indicator



FIRE ALARM SYSTEMS

ACCESSORIES



LABEL HOLDER 3390

Type numbers

3390: Label holder (100 holders per packet, excluding labels)

3391: Labels for 3390 (10 sheets à 132 labels)



DUCT DETECTOR CHAMBER UG-4 6377

Features

- One-pipe air sampling system Uniguard Superflow.
- Patented venturi pipe and duct housing.
- Easy service and maintenance.
- Test hole in cover.
- the venturi pipes are available in 3 lengths; 0.6, 1.5, and 2.8 meter.

Type numbers

6377: UG-4 duct detector chamber - incl standard mounting accessories

6380-06: UG-4 pipe 0.6 m

6380-15: UG-4 pipe 1.5 m - incl plastic end gasket and rubber gasket TET 26-35

6380-28: UG-4 pipe 2.8 m - incl plastic end gasket and rubber gasket TET 26-35

6381-06 1: UG-4 pipe 0.6 m with built in fan - (Ext 24 V AC required)

6381-15 1: UG-4 pipe 1.5 m with built in fan - incl plastic end gasket and rubber gasket TET 26-35 (Ext 24 V AC required)

6381-28 1: UG-4 pipe 2.8 m with built in fan - incl plastic end gasket and rubber gasket TET 26-35 (Ext 24 V AC required)

6382 1: UG-4 bracket

6384: UG-4 filter (10 pieces)

6385: UG-4 rubber gasket TET 26-35 (spare part)

1) The UG-4 bracket 6382 is required for the mounting of 6377 when a pipe with fan (6381-xx) is used.

FIRE ALARM SYSTEMS ACCESSORIES



DRIP PAN FOR DETECTOR 6218

Features

- Used together with any of Panasonic's heat or smoke detectors plugged in a base.
- The drip pan has two mounting flanges on the outside to make it leakproof from the ceiling.
- Protects against damp and moisture.
- Cable glands for cable diameter 6-10 mm are included.

Type numbers

6218: Drip pan for detector



DETECTOR HEATER 6228

Features

- Prevention of condensation.
- For detectors in cold or humid environments.
- Self regulating with a surface temperature of $40 (\pm 7) ^\circ\text{C}$.
- Increases the ambient temperature of $-20 ^\circ\text{C}$ to $-10 ^\circ\text{C}$ for the mounted detector.
- Allowing it to work within the specified environmental conditions.
- Fast connectors for power supply cables.

Type numbers

6228: Detector heater



PROTECTIVE COVER FOR DETECTOR 6360

Features

- Protection against physical damage.
- Used together with any of Panasonic's heat or smoke detectors plugged in a base.

Type numbers

6360: Protective cover for detector

FIRE ALARM SYSTEMS

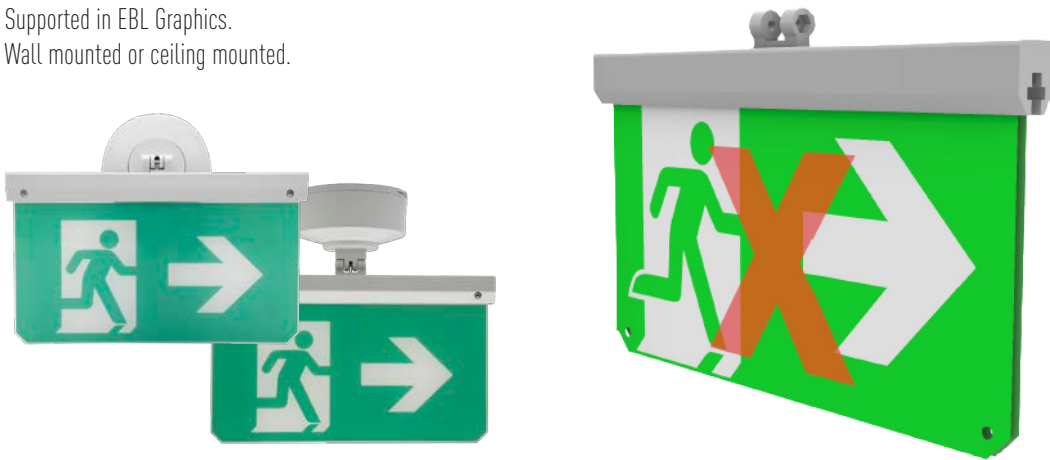
ACCESSORIES

EXIT LIGHTS AND EMERGENCY LIGHTS

INTEGRATION INTO EBL FIRE ALARM SYSTEM

Exit Lights MX25 and MX40

- Monitoring via the detector loop.
- Separate 24VDC non battery backup power supply giving small impact on loop length.
- Monitored as technical alarm in the EBL system. 100 technical alarms per C.I.E.
- Set up as emergency lights in the EBL Win.
- Supported in EBL Graphics.
- Wall mounted or ceiling mounted.



Emergency lights for open areas and corridors

- Number of technical alarms is increased to 200 per C.I.E.
- Technical alarms can individually be set to trigger internal buzzer in C.I.E.
- Technical alarms can individually be set to be latched or not.
- Latched technical alarms are reset by green reset button on C.I.E.



FIRE ALARM SYSTEMS TOOLS



LOOP TESTER 1105

Features

- Verify the cabling and loop devices before the c.i.e is installed.
- PDF reports for documentation of the loop.
- Can be used for auto addressing of loop devices.
- Read out the loops, combine and save as one SSD.
- Ideal when sub-contractors are used.
- Possible to complete programming during the installation.
- Comes complete with a power supply in a robust carry casing.

Type numbers

1105: Loop tester



ADDRESS SETTING TOOL 4414 E

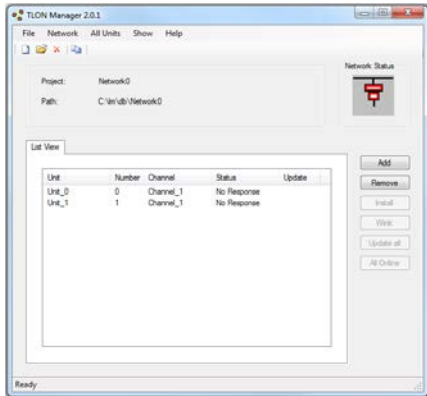
Features

- Fast and easy to use tool for address setting of COM loop units.
- Can set a COM loop unit to default value, address 0.
- Configurable auto turn off time.
- Automatic mode setting of advanced detectors.
- Long battery lifetime - up to 50000 readings.
- Cable included to support all types of loop devices.

Type numbers

4414 E: Address setting tool

FIRE ALARM SYSTEMS TOOLS



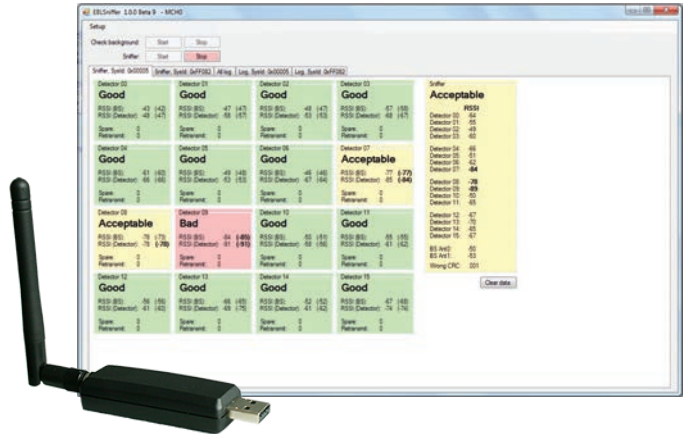
TLON MANAGER KIT 5095

Features

- Software & hardware for creation and installation of a TLON Network.
- USB Network interface - for easy network connection.
- The kit contains:
 - U10 USB Network interface
 - Network connection cable
 - USB Memory stick
 - USB extension cable
 - License

Type numbers

5095: TLON Manager kit



WIRELESS SNIFFER 4613 AND EBL SNIFFER

Features

- Highly recommended as a help during planning, installation and commissioning of the wireless system.
- Checks the background noise.
- Checks the signals between a Base station and its wireless detectors.
- Verifies that the standard EN54-25 is fulfilled.

Type numbers

4613: Wireless sniffer





PLANNING, COMMISSIONING, AND INSTALLATION TOOL EBLWin

Modern fire alarm systems are very complex and versatile. To get the optimal performance in the most effective way Panasonic provides EBLWin - a powerful and very easy to use Windows based PC tool for planning, commissioning, and maintenance of the system EBL512 G3.

Regardless if you prefer to do all the planning and programming at the office and just download to the system on site, or if you prefer to go onsite and create all the Site Specific Data (SSD) with the help of auto addressing, EBLWin supports both ways of working.

EBLWin's auto addressing function is one of the most powerful and yet easiest to handle. It can be applied on new installations, extensions of existing systems or used when replacing detectors. Simply connect to the fire alarm system and let the SW guide you thru the complete process.

The screenshot displays the Panasonic EBLWin software interface, which is used for planning, commissioning, and maintenance of fire alarm systems. The main window shows a treeview on the left with categories like 'System', 'Zones and alarm points', and 'Control Unit 0'. The central area displays a list of devices, including 'AMD 4400 (Advanced mode)' and 'MCP 4433/4438'. A 'Properties for COM-loop' dialog box is open, showing settings for 'Loop 0', including 'Cable length', 'Conductor resistance', and 'Feeder line conductor resistance'. A diagram at the bottom illustrates the 'Feeder line' and 'Loop' with distances of 782 m and 1354 m. Other windows visible include '4400 Analog multi detector (Advanced mode)' and a 'Check loop status and MCA' window.

FIRE ALARM SYSTEMS GATEWAY APPLICATIONS

GATEWAY 5088

Features

- Remote presentation of actual EBL status via browser.
- Remote operation of an EBL system via encrypted 2-way communication.
- 2-way remote operation of an EBL system via up to 1024 bit encryption.
- Automatically generated e-mail at predetermined events; fire alarm, service signal, fault etc.
- Works at gateway to security- and building management.
- Mounted on the dedicated DIN rail inside c.i.e.



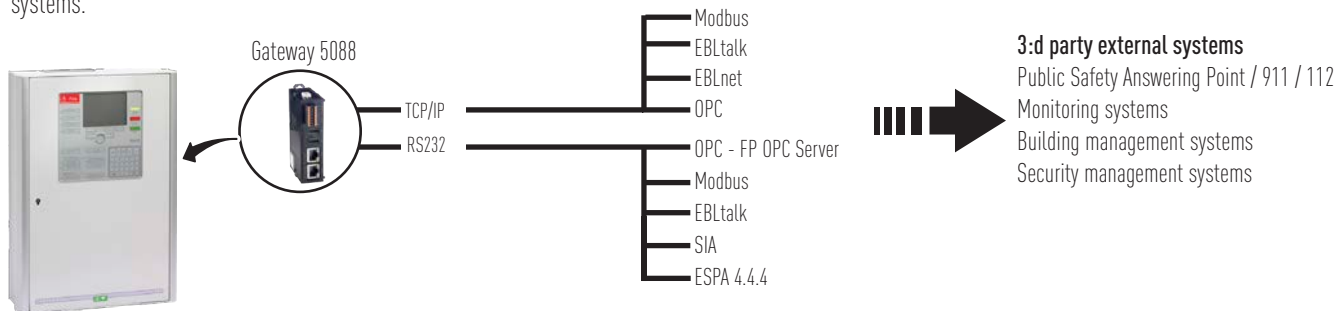
- Remote monitoring over TCP/IP using WEB interface.
- Full control of the c.i.e remotely.
- Easy access to the web interface of the IP cameras.
- Interoperability with other systems like:
 - Security Management systems
 - CCVE solutions
 - Several drivers and protocols (EBLnet, EBLtalk, Modbus, OPC server) for easy integration

Type numbers

5088: Gateway

5088 AS GATEWAY

Use the gateway to connect to separate systems. Transmit and present information in building management and security systems.



EBLWEB

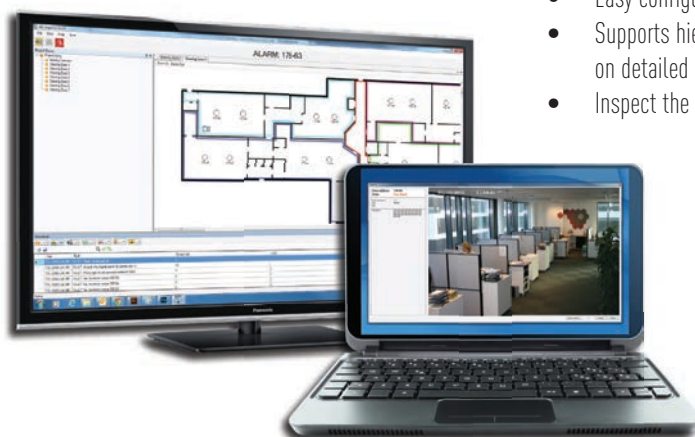
EBLWeb will present the current status of the EBL-system remotely, i.e. showing current alarms, faults, disablement, and other deviations corresponding to the EBL CU. It is possible to check the area with a linked camera.

FIRE ALARM SYSTEMS SOFTWARE APPLICATIONS

EBL GRAPHICS

Features

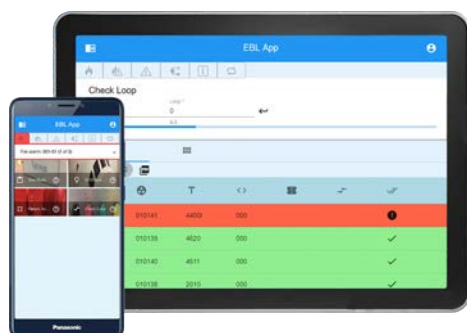
- Monitors a complete EBL system.
- Report fire alarm, faults, or other deviations.
- Possibility to reset fire alarms and acknowledge faults.
- Possibility to disable / re-enable single alarm points or zones graphically.
- Easy configuration with EBL Graphic Designer.
- Supports hierarchical drawing image handling so that the user may monitor the systems on detailed drawings.
- Inspect the monitored area with a linked network camera.



EBL WEB MONITOR

Features

- Monitors several EBLWebs at the same time.
- Report fire alarm, faults, or other deviations.
- Easy configuration with EBL Monitor Tool.
- Opens a website to a specific EBLWeb.
- Supports map image handling, so that the user may position the fire alarm systems on a user specified map.
- Adapted for usage on PC or tablet.

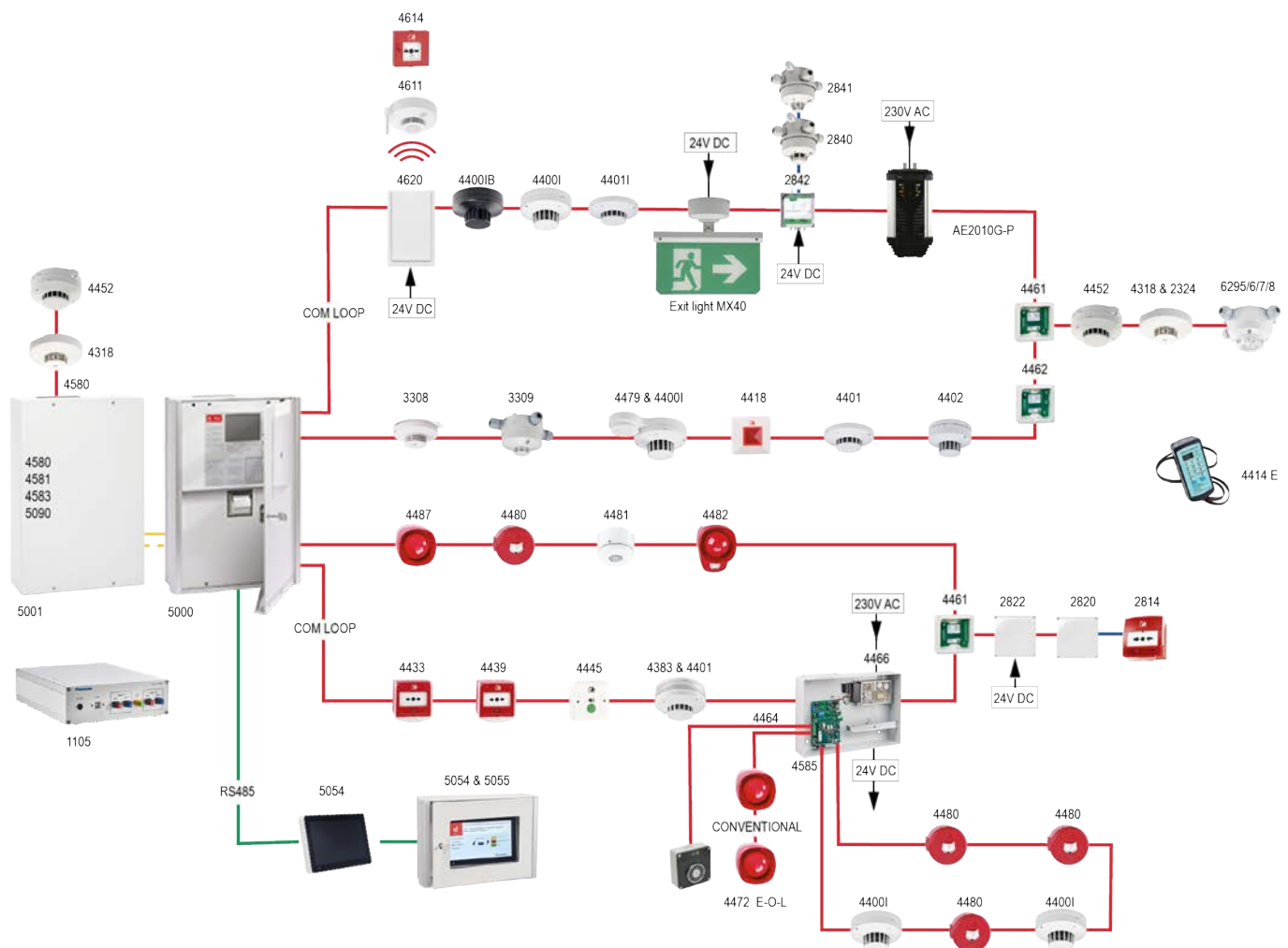


EBL APP

Features

- Set a zone in test mode, test the detectors and get a signed report.
- Verify the function of all individual outputs in the system.
- Test alarm devices.
- Activate detector LED to simplify commissioning.

EBL512 G3 SYSTEM OVERVIEW



Panasonic fire alarm systems are designed to accommodate both stand alone and large system requirements using different control and indicating units (C.I.E) called control panels. Growing up from a stand alone installation with the EBL512 G3 up to 30,600 devices can be connected through 30 control panels with 4 detector loops each.

Panasonic

Panasonic has been successfully tested to the highest standards, ensuring high quality and reliable fire alarm solutions.



To discover more visit www.panasonic-fire-security.com

Panasonic Fire & Security Europe AB
Jungmansgatan 12
SE-211 11 Malmö, Sweden
Tel: +46 (0) 40 697 7000

Doc: MEW01788 Rev: 6 Date: 2021-01-08