



🔒 | Log on and register at | ❤️
<https://onlinewarranty.panasonic.com.sg>

Please keep
a copy of your
**ORIGINAL
PURCHASE
RECEIPT**

Register within
14 Days from
purchase date

Additional
3 months
for e-warranty
registration

Warranty terms and conditions at <http://www.panasonic.com.sg/support>

**TERMS AND
CONDITIONS:**

1. Only purchases of the listed models made from 16 Dec 2022 to 31 Jan 2023 (both dates inclusive) from any of the authorized dealers will qualify for the above-mentioned promotional offers.
2. Customers are encouraged to register their purchases within 14 days from purchase date at <https://onlinewarranty.panasonic.com.sg/> in order to enjoy additional 3 months of warranty coverage.



Join us at www.facebook.com/sgpanasonic

Panasonic Singapore. 202 Bedok South Avenue 1 #02-02, Singapore 469332. Tel: 6222 7222 Fax: 6299 1212. For details, visit www.panasonic.com.sg/

Panasonic

Bring Prosperity Home with Panasonic Appliances this Chinese New Year!

1 Jan to
31 Jan 23



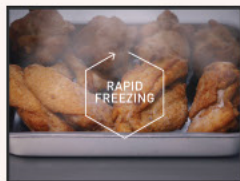
Create Today. Enrich Tomorrow.



Scan to find out more

REFRIGERATOR

PRIME⁺ EDITION



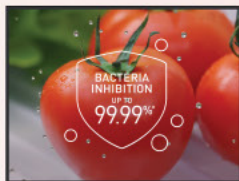
PRIME FREEZE

Whether you are cooking for your family, working towards your fitness goals, or even preparing for a gathering with friends, Prime Freeze expands the user experience range and provides fresh inspiration, making it easier to practise healthy eating.



PRIME FRESH

-3°C Prime Fresh Freezing makes food soft frozen without damage to cells at approx. -3°C, the temperature that foods just start to freeze. Bacterial growth and oxidation are suppressed to retain freshness longer.



nanoeX

Cleanliness is the heart of a wholesome meal. The PRIME+ EDITION with nanoe™ X technology reduces pesticides, deodorizes and eliminates bacteria in storages. Stay worry-free when food stays safe and hygienic.

*Tested by Kitasato Research Center for Environmental Science



PRIME+ EDITION 4-DOOR REFRIGERATOR

NR-YW590YMMS **537L**
750 (W) x 1,890 (H) x 750 (D) mm

\$2,625 ~~\$3,099~~

- Fresh Storage with PrimeFresh & PrimeFreeze
- Double Hygiene with Nanoe™X and Ag Clean
- Advance Eco Technology with ENONAVI and INVERTER

PRIME FRESH PRIME FREEZE



PRIME+ EDITION 3-DOOR REFRIGERATOR

NR-CW530XMMS **492L**
750 (W) x 1,730 (H) x 750 (D) mm

\$2,120 ~~\$2,499~~

- Fresh Storage with PrimeFresh & PrimeFreeze
- Double Hygiene with Nanoe™X and Ag Clean
- Advance Eco Technology with ENONAVI and INVERTER

PRIME FRESH PRIME FREEZE



PRIME+ EDITION 2-DOOR REFRIGERATOR

NR-BW530XMMS **497L**
750 (W) x 1,730 (H) x 750 (D) mm

\$1,918 ~~\$2,299~~

- Fresh Storage with PrimeFresh & PrimeFreeze
- Double Hygiene with Nanoe™X and Ag Clean
- Advance Eco Technology with ENONAVI and INVERTER

PRIME FRESH PRIME FREEZE



MADE IN JAPAN 6-DOOR REFRIGERATOR

NR-F603GT-WS/TS/N6 **488L**
685 (W) x 1,828 (H) x 745 (D) mm

\$3,938 ~~\$4,699~~

- 7 Day Freshness with Prime Fresh Freezing
- Double Hygiene with Nanoe™X and Ag Clean
- Advance Eco Technology with ECONAVI and INVERTER



PRIME FRESH nanoeX

MADE IN JAPAN 6-DOOR REFRIGERATOR

NR-F503GT-WS/TS/N6 **402L**
685 (W) x 1,828 (H) x 699 (D) mm

\$3,635 ~~\$4,299~~

- 7 Day Freshness with Prime Fresh Freezing
- Double Hygiene with Nanoe™X and Ag Clean
- Advance Eco Technology with ECONAVI and INVERTER



2-DOOR TOP FREEZER REFRIGERATOR

NR-TZ601BPKS/BPSS **541L**
806 (W) x 1,847 (H) x 782 (D) mm

\$1,514 ~~\$1,699~~ / **\$1,463** ~~\$1,599~~

- Smart Cooling System for Freshness Retention
- Hygienic Storage with Ag Clean & Ag Meat Case
- Advance Eco Technology with ECONAVI and INVERTER



2-DOOR TOP FREEZER REFRIGERATOR

NR-TX461CPKS **405L**
686 (W) x 1,764 (H) x 694 (D) mm

\$1,211 ~~\$1,299~~

- Smart Cooling System for Freshness Retention
- Hygienic Storage with Ag Clean & Ag Meat Case
- Advance Eco Technology with ENONAVI and INVERTER



MADE IN JAPAN 6-DOOR REFRIGERATOR

NR-F654GT-X6/SS **534L**
750 (W) x 1,828 (H) x 745 (D) mm

\$5,251 ~~\$6,299~~

- 7 Day Freshness with Prime Fresh Freezing
- Double Hygiene with Nanoe™X and Ag Clean
- Advance Eco Technology with ECONAVI and INVERTER

PRIME FRESH nanoeX

NR-F603GT-X6/SS **488L**
685 (W) x 1,828 (H) x 745 (D) mm

\$4,039 ~~\$4,799~~



2-DOOR BOTTOM FREEZER REFRIGERATOR

NR-BX471GPSS **402L**
686 (W) x 1,790 (H) x 695 (D) mm

\$1,312 ~~\$1,429~~

- 7-Days Freshness with PrimeFresh Freezing™
- Hygienic Storage with Ag Clean
- Advance Eco Technology with ENONAVI and INVERTER

PRIME FRESH



2-DOOR BOTTOM FREEZER REFRIGERATOR

NR-BX471WGKS **405L**
686 (W) x 1,790 (H) x 697 (D) mm

\$1,312 ~~\$1,429~~

- 7-Days Freshness with PrimeFresh Freezing™
- Hygienic Storage with Blue AG+ and Ag Clean
- Advance Eco Technology with ENONAVI and INVERTER

PRIME FRESH



2-DOOR BOTTOM FREEZER REFRIGERATOR

NR-BX471CPSS **405L**
686 (W) x 1,790 (H) x 695 (D) mm

\$1,312 ~~\$1,299~~

- 7-Days Freshness with PrimeFresh Freezing™
- Hygienic Storage with Ag Clean
- Advance Eco Technology with ENONAVI and INVERTER

PRIME FRESH





Scan to find
out more

WASHER

CARE⁺ EDITION



HYBRID DRY
HYBRID DRY LITE

At Panasonic, we are always looking for new ways to better your wellbeing by innovating new technologies that care for your clothes and the environment. Our unique drying technology simplifies your laundry routine while protecting it from shrinking.



AI SMART WASH

Simplify your laundry routine with Panasonic's AI Smart Wash technology and smart control that helps you complete your laundry even without any supervision.



Panasonic
SmartApp⁺

Remotely control your CARE+ Edition wherever you are and easily run your preferred wash with personalised profiles with just a few taps. You can also troubleshoot your CARE+ Edition washers when you encounter any problem.



12
YEARS
WARRANTY

CARE+ EDITION FRONT LOAD WASHER / DRYER

NA-S106FR1BS 10kg Wash 6kg Dry
596 (W) x 845 (H) x 585 (D) mm

\$1,615 ~~\$1,899~~

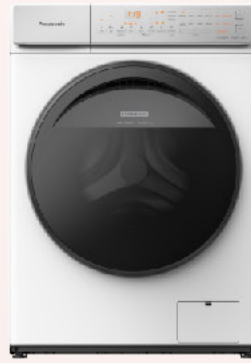
NA-S96FR1BSG 9kg Wash 6kg Dry
596 (W) x 845 (H) x 585 (D) mm

\$1,413 ~~\$1,679~~

Water Efficiency: ✓✓✓✓
Water Consumption: 3.7 litres/kg
Registration No.: WM-2022/ 037135/TUV

- All in One Total Hygiene Care with Cold Wash, Hot Wash and Dual Tub Care
- Unique Drying Technology with Gentle Dry for Dry Care
- Convenience with AI Smart Wash & Panasonic Smart App⁺

HYBRID DRY StainMaster⁺ AI SMART WASH



12
YEARS
WARRANTY

CARE+ EDITION FRONT LOAD WASHER / DRYER

NA-S106FC1WS 10kg Wash 6kg Dry
596 (W) x 845 (H) x 585 (D) mm

\$1,514 ~~\$1,799~~

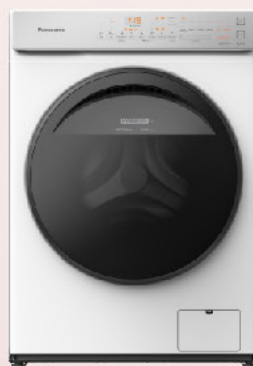
NA-S96FR1BSG 9kg Wash 6kg Dry
596 (W) x 845 (H) x 585 (D) mm

\$1,312 ~~\$1,559~~

Water Efficiency: ✓✓✓✓
Water Consumption: 3.8 litres/kg
Registration No.: WM-2022/ 037136/TUV

- All in One Total Hygiene Care with Hot Wash and Dual Tub Care
- Unique Drying Technology with Gentle Dry for Dry Care
- Convenience with AI Smart Wash & Panasonic Smart App⁺

HYBRID DRY StainMaster⁺ AI SMART WASH



12
YEARS
WARRANTY

FRONT LOAD WASHER WITH DRY ASSIST

NA-V10FC1WSG 10kg Wash
596 (W) x 845 (H) x 585 (D) mm

\$1,362 ~~\$1,599~~

NA-V90FC1WSG 9kg Wash
596 (W) x 845 (H) x 585 (D) mm

\$1,110 ~~\$1,279~~

Water Efficiency: ✓✓✓✓
Water Consumption: 4.4 litres/kg
Registration No.: WM-2022/ 037138/TUV

- All in One Total Hygiene Care with Hot Wash and Dual Tub Care
- Unique Drying Technology with Dry Assist Function for Dry Care
- Convenience with AI Smart Wash & *Panasonic Smart App⁺

*(applicable to NA-V10FC1WSG only)

HYBRID DRY LITE StainMaster⁺ AI SMART WASH



12
YEARS
WARRANTY

FRONT LOAD WASHER WITH DRY ASSIST

NA-V10FR1BSG 10kg Wash
596 (W) x 845 (H) x 585 (D) mm

\$1,463 ~~\$1,739~~

NA-V90FR1BSG 9kg Wash
596 (W) x 845 (H) x 585 (D) mm

\$1,211 ~~\$1,439~~

Water Efficiency: ✓✓✓✓
Water Consumption: 4.3 litres/kg
Registration No.: WM-2022/ 037137/TUV

- All in One Total Hygiene Care with Cold Wash, Hot Wash and Dual Tub Care
- Unique Drying Technology with Dry Assist Function for Dry Care
- Convenience with AI Smart Wash & Panasonic Smart App⁺

HYBRID DRY LITE StainMaster⁺ AI SMART WASH



MADE IN JAPAN
12
YEARS
WARRANTY
DESIGN
AWARD
2020
Awarded
in Germany

MADE IN JAPAN FRONT LOAD WASHER / DRYER

NA-D106X1WS3 10kg Wash 6kg Dry
600 (W) x 998 (H) x 665 (D) mm

\$2,019 ~~\$2,299~~

- 34mins Active Speed Wash
- ECO Drying
- Advance Eco Technology with ENONAVI and INVERTER

Water Efficiency: ✓✓✓✓
Water Consumption: 8.7 litres/kg
Registration No.: WM-2015/019158

ActiveFoam



12
YEARS
WARRANTY

TOP LOAD WASHER

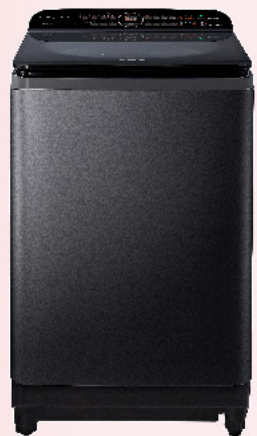
NA-FD16V1BRQ 16kg Wash
640 (W) x 1,100 (H) x 705 (D) mm

\$1,312 ~~\$1,559~~

- Stain and Bacteria Removal with StainMaster⁺ and Hot Wash
- Powerful Wash and Rinse with Water Bazooka
- Lift Stains Easily with ActiveFoam

Water Efficiency: ✓✓✓
Water Consumption: 7.30 litres/kg
Registration No.: WM-2020/ 030650/TUV

StainMaster⁺ ActiveFoam



12
YEARS
WARRANTY

TOP LOAD WASHER

NA-FD12VR1BQ 12kg Wash
554 (W) x 1,070 (H) x 618 (D) mm

\$948 ~~\$1,099~~

- Stain and Bacteria Removal with StainMaster⁺ and Hot Wash
- Powerful Wash and Rinse with Water Bazooka
- Lift Stains Easily with ActiveFoam System

Water Efficiency: ✓✓✓
Water Consumption: 7.40 litres/kg
Registration No.: WM-2020/ 029571/TUV

StainMaster⁺ ActiveFoam

NA-FD14V1BRQ 14kg Wash
640 (W) x 1,100 (H) x 705 (D) mm

\$1,211 ~~\$1,439~~

NA-FD10V1BRQ 10kg Wash
554 (W) x 1,070 (H) x 618 (D) mm

\$857 ~~\$999~~





Scan to find
out more

COOKING

healthy
EVERYDAY

Panasonic
Cooking

Enjoy Versatile Healthy Cooking

The Panasonic 4-in-1 Combi Steam let
you cook a wide range of healthy dishes
with a single unit.



FAMILY SIZE COMBINATION MICROWAVE OVEN

NN-CD87KSY PQ **34L** **1300W**
560 (W) x 343 (H) x 450 (D) mm

\$807 ~~\$899~~

- 5 Combination Cooking Programs
- Re-bake Bread Program
- 30 Auto Menus

the Genius SENSOR **INVERTER**



COMPACT COMBINATION OVEN

NN-CD565BYPQ **27L** **1000W**
520 (W) x 310 (H) x 395 (D) mm

\$424 ~~\$519~~

- Time-saving with Simultaneous Combination Cooking
- 34cm Turntable
- 25-Auto menus



LOW SUGAR IH RICE COOKER

SR-HL151KSH **1.5L** **1200W**
272 (W) x 228 (H) x 334 (D) mm

\$302 ~~\$359~~

- Non-stick & Durable Inner Pan
- Low On Sugar, Increase in Resistant Starch
- 11 Auto Menus



COMBINATION STEAM OVEN

NN-CS89LBYPQ **3L** **1300W**
500 (W) x 391 (H) x 480 (D) mm

\$1,211 ~~\$1,599~~

- 4-in-1 Combination Steam Oven
- 2-Level Steam and Convection Cooking
- 36-Auto Menus

the Genius SENSOR **INVERTER**



MICOM RICE COOKER

SR-CX188SSH **1.8L** **835W**
274 (W) x 249 (H) x 384 (D) mm

\$181 ~~\$229~~

- 4.0mm with 6-layer Inner Pan
- 12H Keep Warm Function
- 16 Auto Menus



MICOM RICE COOKER

SR-CX108SSH **1.0L** **835W**
245 (W) x 212 (H) x 349 (D) mm

\$161 ~~\$199~~

- 4.0mm with 6-layer Inner Pan
- 12H Keep Warm Function
- 16 Auto Menus



CUBIE STEAM OVEN

NU-SC180BYPQ **20L** **1000W**
404 (W) x 376 (H) x 438 (D) mm

\$515 ~~\$609~~

- 2-level Healthy Steam and Convection Oven
- Healthy Fry & Fermentation Function
- 18-Auto Menus



GRILL STEAM MICROWAVE OVEN

NN-DS59NBYPQ **27L** **1100W**
514 (W) x 347 (H) x 456 (D) mm

\$666 ~~\$759~~

- Quick & Powerful Grill
- 1100W Powerful Steam
- 28 Auto & 6 Combination Cooking Options

the Genius SENSOR **INVERTER**



SUPERHEATED CUBIE STEAM OVEN

NU-SC300BYPQ **30L** **1500W**
494 (W) x 375 (H) x 476 (D) mm

\$908 ~~\$1,099~~

- 2-Level Superheated Steam & Convection Oven
- Healthy Fry & Fermentation Mode
- 30 Auto Menus



MICOM RICE COOKER

SR-CN188WSH **1.8L** **700W**
274 (W) x 246 (H) x 384 (D) mm

\$131 ~~\$179~~

- 2.2mm with 6-layer Inner Pan
- 12H Keep Warm Function
- 16 Auto Menus



MICOM RICE COOKER

SR-CN108WSH **1.0L** **700W**
245 (W) x 209 (H) x 349 (D) mm

\$121 ~~\$159~~

- 2.2mm with 6-layer Inner Pan
- 12H Keep Warm Function
- 16 Auto Menus



Scan to find out more

COOKING

Diamond Fluorine & Binchotan-carbon Coated Inner Pot

The "Binchontan-carbon" on the inner surface of the thermo pot is coated with Diamond Fluorine. By making the boiling longer, it alkalizes th pH level of hot water, such enables you to extract more "tasty" elements of tea, such as amino acid and cathechin.



THERMO POT

NC-SU403PZSH **4L** **925W**
245 (W) x 338 (H) x 326 (D) mm

\$242 ~~\$289~~

- U-VIP Saves Energy while Keeping Warm
- Diamond Fluoride & Binchotan Charcoal Coated Interior
- 4-Speed Dispenser



THERMO POT

NC-EG3000CSH **3L** **700W**
217 (W) x 275 (H) x 287 (D) mm

\$131 ~~\$149~~

- 6H Energy Saving Timer
- Diamond Fluoride & Binchotan Charcoal Coated Interior
- 4 Keep Warm Temperatures



DOUBLE WALL ELECTRIC KETTLE

NC-KD300WSH **1.5L** **2200W**
223 (W) x 230 (H) x 158 (D) mm

\$91 ~~\$109~~

- 128mm Wide Opening
- Double Layered Design
- High Quality Stainless Steel [SUS 304]



AUTOMATIC BREAD MAKER

SD-P104WSH **Single Loaf** **360W**
241 (W) x 322 (H) x 304 (D) mm

\$313 ~~\$399~~

- Automatic Yeast, Raisins & Nut Dispenser
- Dual Temperature Sensors For Optimal Baking
- 13 Menus



COMPACT TOASTER OVEN

NT-H900KSH **9L** **1000W**
366 (W) x 204 (H) x 274 (D) mm

\$61 ~~\$69.90~~

- Upper & Lower Heater
- Double Layer Insulated Glass Door
- Wide Temperature Control



PLASTIC JUG BLENDER

MX-EX1511WSP **1.5L** **450W**
189 (W) x 414 (H) x 174 (D) mm

\$71 ~~\$84.90~~

- 450W Power With 3 Blending Speed
- Stainless SUS Saber Blades
- Safety Lock & Thermal Cut-off



GLASS JUG BLENDER

MX-EX1561WSP **1.5L** **450W**
189 (W) x 414 (H) x 174 (D) mm

\$81 ~~\$99.90~~

- 450W Power With 3 Blending Speed
- Stainless SUS Saber Blades
- Odour & Stain Resistant Glass Jug



ELECTRIC OVEN

NB-H3801KSP **38L** **1500W**
533 (W) x 364 (H) x 392 (D) mm

\$232 ~~\$269~~

- Double Heater Grill & Convection
- Double Layered Insulated Glass Door
- Built-in LED Lamp



ELECTRIC OVEN

NB-H3203KSP **32L** **1500W**
527 (W) x 343 (H) x 392 (D) mm

\$201 ~~\$239~~

- Double Heater Grill & Convection
- Double Layered Insulated Glass Door
- Built-in LED Lamp



BLENDER

MX-MG53C1CSP **2L** **700W**
186 (W) x 425 (H) x 200 (D) mm

\$131 ~~\$149~~

- 700W with V&M Technology
- Stainless Steel Ultimate PowerBlade
- Wet & Dry Mill



3-IN-1 HAND BLENDER

MX-SS1BSP **600W**
64 (W) x 397 (H) x 70 (D) mm

\$67 ~~\$79.90~~

- 600W with 4-Blade Blender
- Contains Chopper & Whisk Attachment
- Various Speed Control





Scan to find out more

GROOMING

Responsive Shaver for a Gentle, Close Shave

With Panasonic's responsive beard sensor technology that automatically adjusts power to match your specific beard needs for a personalized shaving experience.



Scan to find out more

STEAM GENERATORS

Powerful Steam Prevents Calc Buildup

Original Panasonic technology prevents calc buildup to ensure a constant stream of powerful steam for professional results. A high-pressure boiler boosts the volume of steam to another level all while Optimal Temperature Care technology eliminates any need for temperature settings.



WET AND DRY SHAVER ES-LV97-K751

\$434 ~~\$499~~

- Ultra-Fast Motor for Powerful, Smooth Shaving
- 30°Nano Polished Inner Blades for Clean, Efficient Cutting
- Multi-flex 16D Contour- Following Head.



WET AND DRY SHAVER ES-LV67-K751

\$373 ~~\$429~~

- Ultra-Fast Motor for Powerful, Smooth Shaving
- 30°Nano Polished Inner Blades for Clean, Efficient Cutting
- Multi-flex 16D Contour- Following Head



BODY HAIR TRIMMER ER-GK20-K401

\$100 ~~\$109~~

- Quick & Safe Body Trimming
- Gentle on Skin - Skin Protective Blade Technologies
- Comb Attachment - Trim Uniform Length

ORAL IRRIGATOR EW1513W451

\$191 ~~\$219~~

- Easier and Faster Orthodontic Appliance Care
- Ultrasonic Technology for Better Dental Care with Shock Waves
- Powerful, Yet Gentle Ultrasonic Nozzle Can Help to Carefully Remove Food Debris and Bacteria in Periodontal Pockets



STEAM GENERATOR IRON NI-GT500NSH

\$605 ~~\$699~~

- Advanced Anti-Calc Technology Ensures a Continuous Burst of Powerful Steam
- Powerful and Long-Lasting Steam Boost (720g/min at 240V)
- Optimal Care Mode for All Types of Ironable Fabrics



STEAM GENERATOR IRON NI-GT200ASH

\$403 ~~\$499~~

- Easy Cleaning via a Simple Internal Structure
- Powerful and Long-lasting Steam Boost (600g/ min at 240V)
- Powerful Vertical Steam for Bacteria Removal



CORDLESS STEAM IRON NI-WL41VSH

\$131 ~~\$199~~

- Smooth Glide with Cordless and Multi-Direction Soleplate
- Quick Set-up with Detachable Water Tank
- No Waiting Till Cooling Down with Carrying Case



CORDLESS STEAM IRON NI-WL30VSH

\$100 ~~\$159~~

- Smooth Glide with Cordless and Multi-Direction Soleplate
- Quick Set-Up with Detachable Water Tank
- Less Risk of Burn and Drop with the Stable Power Base

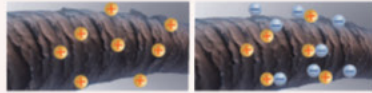




Scan to find out more

BEAUTY

nanoe™



Static Electricity Suppression Effect

Hair naturally tends to have a positive electrical charge that makes it stand on end. nanoe™ neutralizes the charge, reducing static electricity to settle your hair & make it smoother.



Moisture-rich nanoe™ particles penetrate hair & tighten the cuticle, giving your hair gloss, silkiness and making it more manageable.

Moisture-rich nanoe™ moisturizes your scalp to keep it healthy, preventing the dryness that cause damage to hair.



NANOE™ & DOUBLE MINERAL HAIR DRYER EH-NA98-K605 / H-NA98RP605

\$333 ~~\$399~~

- 1800W - nanoe™ & Double Mineral Ions
- Total Care for Hair, Scalp and Facial Skin
- Hot/Cold Alternating Mode for Adding Luster to the Hair



NANOE™ HAIR DRYER EH-NA45RP685 / EH-NA45-W685

\$141 ~~\$199~~

- 1600W - nanoe™ & Double Ions
- Quick-Dry Nozzle
- Healthy Mode



NANOE™ HAIR DRYER EH-NA65-K605

\$161 ~~\$219~~

- 12000W nanoe™ Hair Dryer
- Quick Dry Nozzle
- Smooth and Shiny Hair



1500W SUPER QUIET IONITY HAIR DRYER EH-NE44-T605

\$60 ~~\$64⁹⁰~~

- Super Quiet Operation
- Ionity Moisture Retaining Design
- Foldable and Compact



NANOE™ HAIR DRYER EH-NE27-K605

\$58 ~~\$69~~

- 1200W - nanoe™ Technology
- Compact, Foldable and Lightweight
- Quick-Dry Nozzle



HAIR STYLER WITH NEGATIVE IONS

EH-KE46VP605
(Comes with styling attachments)

\$77 ~~\$85⁹⁰~~

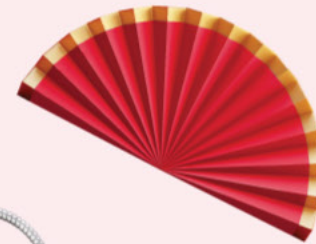
- Ion Conditioning for Glossy Hair
- 3 Attachments
- 3 Setting Modes for Versatile Styling



IONITY MULTI- STYLING STRAIGHTENER EH-HV70-K605

\$111 ~~\$129~~

- Easy Multi Styling
- Smooth Sliding Plate
- Quick & Long Lasting



ALKALINE IONIZER TK-AS45-ZEX

\$1,211 ~~\$1,599~~

- Generates 5 Kinds of Water: 3 Levels Alkaline, Purified, 1 Level Weak Acidic
- Ionized Water Output Volume 2.0 L/min. at 100 kPa Water Pressure
- Alkaline ionized water is safe to drink, improves gastrointestinal function, and can be used effectively for cooking.



MULTI- STYLING STRAIGHTENER

EH-HV52-K605

\$80 ~~\$95⁹⁰~~

- Even Heat Distribution Plate
- Keratin & Coconut Oil Infused Ceramic Plate
- 5 Attachments



HAIR STYLER EH-HT40-K605

\$100 ~~\$129~~

- Create Beautiful Curls Even with Layered Hairstyles
- Static Electricity Suppression Brush
- 32mm Barrel



ALKALINE IONIZER TK-AS700-WEX

\$2,523 ~~\$2,999~~

- Generates 7 Kinds of Water: 4 Levels Alkaline, Purified, 2 Levels Acidic
- High Performance 4-stage Filtration Removes 19 Harmful Substances
- Removes 99.9% of Viruses and 99.999% of Bacteria