

Panasonic



🔒 | Log on and register at | ❤️
<https://onlinewarranty.panasonic.com.sg>

Please keep
a copy of your
**ORIGINAL
PURCHASE
RECEIPT**

Register within
14 Days from
purchase date

Additional
3 months
for e-warranty
registration

Warranty terms and conditions at <http://www.panasonic.com.sg/support>



Chinese

NEW YEAR
❀ SPECIAL 2021 ❀

1 JAN - 28 FEB



**TERMS AND
CONDITIONS:**

1. Only purchases of the listed models made from 1 Jan to 28 Feb 2021 (both dates inclusive) from any of the authorized dealers will qualify for the above-mentioned promotional offers.
2. Customers are encouraged to register their purchases within 14 days from purchase date at <https://onlinewarranty.panasonic.com.sg/> in order to enjoy additional 3 months of warranty coverage.



Join us at www.facebook.com/sgpanasonic

Panasonic Singapore, 202 Bedok South Avenue 1 #02-02, Singapore 469332. Tel: 6222 7222 Fax: 6299 1212. For details, visit www.panasonic.com.sg

Scan to find out more



Scan to find out more



Epic OLED Movie Performance

The elegant HZ1000 4K OLED TV deliver accurate colour, deep blacks and precise detail thanks to the OLED panel and smooth motion performance. Dolby Vision™ IQ and HDR10+ guarantee accurate scene-by-scene HDR reproduction. The new Filmmaker Mode™ means that movie can look as the director intended at the touch of a button.

HOLLYWOOD

TO YOUR HOME



HCX PRO Intelligent Processor

Working together with Hollywood colourists, Panasonic's passion for films combined with advanced technology has produced the HCX PRO Intelligent Processor. This startlingly powerful chip produces unrivalled cinematic quality for home viewing.



Dolby Vision

Dolby Vision IQ literally adds a new dimension to viewing HDR thanks to the TV's advanced ambient light sensor. Whether your living room is completely dark or brightly lit, the HDR picture is dynamically perfected for the best colour and contrast.



Filmmaker Mode With Intelligent Sensing

An alliance of electronics companies and the world's leading directors devised the Filmmaker Mode. With a single button-press you can preserve the movie's ideal colour, contrast, aspect ratio and frame rate by deactivating some of the TV's picture pre-sets.



Netflix Calibrated Mode

Netflix series and films are made to exacting standards, so that they can look stunning on a big screen. Netflix Calibrated Mode means your TV gets the best from their shows, delivering them to your home as their makers intended.

TH-65HZ1000 **65"**
1,449 (W) x 896 (H) x 348 (D) mm
\$3,999 ~~\$5,499~~



TH-55HZ1000 **55"**
1,228 (W) x 772 (H) x 348 (D) mm
\$2,699 ~~\$3,699~~



HDR10+

Our TVs deliver the highest quality images from UHD Blu-ray™ discs and video streaming services that support HDR10+. By using Dynamic Metadata, the picture's HDR settings are optimised scene-by-scene. As our premium TVs support all HDR formats, your favourite content will always look its best.



DOLBY VISION™

Dolby Vision™ brings compatible UHD Blu-ray™ discs and 4K video streaming to life - with exceptional colour, contrast and brightness. Dynamic metadata, is used to adjust the HDR picture settings scene-by-scene - as the story unfolds, over dark and light sequences.



HEXA CHROMA DRIVE PRO

Now you're seeing truly rich colour. Thanks to an advanced processing technology called Hexa Chroma Drive that uses 6-Colour Reproduction, it manages colours by adding 3 complementary colours (CMY) to the 3 primary colour axes (RGB). Images are naturally beautiful. Panasonic TV invites you and your family to a new level of viewing pleasure.



DOLBY ATMOS

Dolby Atmos®, found in the newest cinemas, and on our premium TVs expresses sound with astonishing clarity, richness and depth. Sound effects are precisely placed in virtual space and time to envelope you in the atmosphere.



Scan to find out more



Scan to find out more



androidtv

Google Assistant

Lifelike Viewing Experience

With our Panasonic Android TV, see every detail sharpened and refined for incredibly realistic pictures. Delivering 2K HDR picture quality, precise details with natural color variations, capture true beauty perfectly on screen. Just like real life. Almost.

Experience Immersive Entertainment

More than just brilliant picture motion and sound, our Panasonic Android TV delivers a deeply immersive entertainment experience with countless movies, games and music you love the smarter way. Compatible with other smart devices for more fun in life.

TRUE TO LIFE PICTURE QUALITY

WIDE VIEWING ANGLE



Consistent image quality from any angle

HEXA CHROMA DRIVE



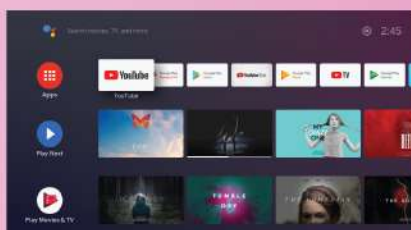
Rich, natural colors & precise image details



Wider color range in HDR for breathtaking realism

GET MORE FROM YOUR TV

Google Play



Get all the top apps & games on Google Play

Chromecast built-in



Put your small screen on your big screen

DOLBY DIGITAL PLUS



Advanced surround sound



ANDROID 4K TV HX655S

HIGH QUALITY PICTURE & SOUND

4K HDR	HDR10
Hexa Chroma Drive	Wide Viewing Angle**
4K Colour Engine	Dolby Digital Plus

** Except 50" model

SMART FEATURES

Android TV	Media Player
Google Assistant	Bluetooth® 5.0 (2-way)
Chromecast Built-in	(Audio/Game Pad/Headphone)
Bluetooth Audio Link	3 x HDMI
Internet Apps	2 x USB

Chromecast built-in HEXA CHROMA DRIVE WIDE VIEWING ANGLE NARROW BEZEL

TH-65HX655 65" 1,460 (W) x 909 (H) x 290 (D) mm \$1,899 \$2,999



TH-55HX655 55" 1,236 (W) x 790 (H) x 274 (D) mm \$1,199 \$1,999



TH-50HX655 50" 1,121 (W) x 760 (H) x 145 (D) mm \$999 \$1,499



TH-43HX655 43" 968 (W) x 608 (H) x 212 (D) mm \$799 \$1,099



Scan to find out more



#LUMIX vlog LIFE

DC-G100V

High image and audio quality join simple operation in a handy compact body. It's the digital single-lens mirrorless camera (DSLM) designed especially for vloggers.



LUMIX G



G100V

Comes with 12-32mm kit lens and DMW-SHGR1 Tripod Grip

\$1,199

- 20.3MP MFT without OLPF
- Spatial Audio Recording via OZO Audio
- Easy Connection to Smartphone



Camera Designed Especially for Vloggers

This compact package has it all. Superb-quality 4K/30p and FHD/60p video. Easy smartphone connection. Creative functions. It's ready to take and use everywhere!



Recognize Your Face — Record Compelling Audio

OZO Audio by Nokia and five modes cover any shooting situation. Enjoy compelling audio without an external mic.

OZO AUDIO



Tracking Mode

With Face recognition, recording range and direction are automatically adjusted. Ideal for vlogging in crowds and more.



Auto Mode

Automatically switches between Tracking Mode and Surround Mode.



Surround Mode

Picks up environmental sounds in all directions for a strong feeling of presence in the place and moment.



Front Mode

Clearly picks up sounds of people's voices, musical instruments, etc., in the forward direction.



Back Mode

Clearly picks up your voiceover in the rearward direction.



LUMIX S



S5

Comes with 20-60mm Kit Lens

\$3,299

- 24.2MP Full Frame with Dual Native ISO
- Up to 10-bit 4K 60p Recording
- Unlimited Video Recording Time for 4K 8-bit



4:2:2 10-bit Internal Recording / HDMI Output

With available internal recording, 10-bit video supports robust color profiles for advanced post-production work. In the 10-bit setting, 4:2:2 10-bit HDMI output is supported along with simultaneous external drive / SD card recording.* Users enjoy high-end cinema camera quality with the convenience of a compact camera body. Image quality that leverages the power of the full-frame sensor takes video to the expressive limit.

* SD card recording not available during 4K 60p/50p 4:2:2 10-bit HDMI output.

Image Format	
Image Area of Video	FULL
Rec Quality	4K 100p 4:2:2 10-bit
Slow & Quick Setting	
Switch NTSC/PAL	NTSC
Rec. File Format	MOV
Time Code	
Luminance Level	64-1023

Switch NTSC / PAL

To support a wide variety of video applications, the system frequency may be freely switched between NTSC (59.94Hz) and PAL (50.00Hz).

LUMIX S



S1H

Body Alone

\$5,799

- 24.2MP Full Frame 6K Video¹⁾
- Industry First Heat-Dispersing Fan Structure
- Unlimited Video Recording Time

Scan to find out more



Scan to find out more



Scan to find out more



LUMIX G



GH5 A/L

Comes with 12-35mm F2.8 Lens/
12-60mm F2.8-4 Lens

\$3,799 ~~\$4,099~~

- World's First 4K 50p**2
- 4:2:2 10 Bit Internal Recording
- Unlimited Video Recording Time

GH5

Body Alone

\$2,699 ~~\$2,899~~



LUMIX G



G95K

Comes with 14-42mm Lens

\$1,399 ~~\$1,499~~

- 20.3MP MFT without OLPF
- 5 Stop Compensation Dual I.S.2
- 4k 25p and VlogL Pre-installed

G95

Body Alone

\$1,299 ~~\$1,399~~



LUMIX G



GF10K

Comes with 12-32mm Lens

\$749 ~~\$849~~

- 16MP MFT without OLPF
- Post Focus 4K Photo Mode
- Soft Skin, Slimming, Night Mode

Colours: Black/ Brown/ Orange/ Pink

LUMIX



TZ220

\$999 ~~\$1,099~~

- 20.1MP 1" MOS Sensor
- Pocket Size 15x Optical LEICA
- 233k Dots LVF

Colours: Black/ Silver

LUMIX



TZ90

\$599 ~~\$649~~

- 20. MP High Sen MOS Sensor
- 30x Optical LEICA ELMARIT Lens
- 4K Video/Photo and Selfie TiltScreen

Colours: Black/ Silver

LUMIX



LX100 II

\$1,299 ~~\$1,399~~

- 17 MP 4/3 Sensor without OLPF
- F1.7-2.8 LEICA SUMMILUX
- Monochrome Modes and 4K Photo



LUMIX



LX10

\$799 ~~\$999~~

- 20.0MP 1" MOS Sensor
- Bright F1.4 LEICA SUMMILUX Lens**1
- 233k Dots LVF

LUMIX S LENS



Lumix S Pro 24-70mm

F2.8

\$3,299

- 24-70mm F2.8 Splash/Dust/Freeze Resistant
- 18 Elements in 16 Groups
- 3 ASPH, 3 ED, 1 UHR

LUMIX S LENS



Lumix S Pro 50mm

F1.4

\$3,599

- 50mm F1.4 Splash/Dust/Freeze Resistant
- 13 Elements in 11 Groups
- 2 ASPH, 3 ED Lens Element

LUMIX S LENS



Lumix S Pro 70-200mm

\$3,899

- 70-200mm F2.8 Splash/ Dust/ Freeze Resistant
- World's Highest 7-stop Image Stabilization

LUMIX S LENS



Lumix S Pro 16-35mm

F4.0

\$2,249

- 16-35mm F4.0 Splash/Dust/Freeze Resistant
- 4K Video Compatibility

LUMIX G LENS



LEICA DG 10-25mm

F1.7

\$2,599

- World's First 10-25mm F1.7
- 17 Elements in 12 Groups
- 3 ASPH, 4 ED, 1 UHR

LUMIX G LENS



LEICA DG 50-200mm

F2.8-4.0

\$2,399 ~~\$2,499~~

- 50-200mm F2.8-4.0 LEICA DG ELMARIT
- 21 Elements in 15 Groups
- 2 ASPH, 2 UED, 2 ED, 1 UHR

LUMIX G LENS



Lumix X 12-35mm

F2.8 II

\$1,249

- 12-35mm F2.8 Splash/ Dust/ Freeze Resistant
- 14 Elements in 9 Groups
- 1 ASPH, 1 UED, 1 UHR

LUMIX G LENS



Lumix X 35-100mm

F2.8 II

\$1,499

- 35-100mm F2.8 Splash/ Dust/ Freeze Resistant
- 18 Elements in 13 Groups
- 2 ED, 1 UED

**ENELOOP PRO
CHARGER KIT**



K-KJ55HC40T2

\$62.90 ~~\$69.90~~

- 3 LED Colors Indicate Charge Progress, Battery Status, and Battery Life
- Charges 2 x AA Cells in 1.5 Hours

eneloop pro

High Capacity Ready to Use Rechargeable Battery - 100%

**ENELOOP PREMIUM
CHARGER KIT**



K-KJ55MC40T2

\$54.90 ~~\$64.90~~

- 3 LED Colors Indicate Charge Progress, Battery Status, and Battery Life
- Charges 2 x AA Cells in 1.5 Hours

eneloop

**ENELOOP PRO
AA SIZE BATTERIES**



BK-3HCC4BT3

\$26.90 ~~\$29.90~~

- Last Approx 8 Times Longer than Alkaline
- Pre-charged

eneloop pro

High Capacity Ready to Use Rechargeable Battery - 100%

**ENELOOP
AA SIZE BATTERIES**



BK-3MCC4BT2

\$23.30 ~~\$25.90~~

- Low Self-Discharged for Multi-Use
- Pre-charged

eneloop

Standard Capacity Ready to Use Rechargeable Battery - 100%

**ENELOOP PRO
AAA SIZE BATTERIES**



BK-4HCC4BT3

\$26.90 ~~\$29.90~~

- Last Approx 8 Times Longer than Alkaline
- Pre-charged

eneloop pro

High Capacity Ready to Use Rechargeable Battery - 100%

**ENELOOP
AAA SIZE BATTERIES**



BK-4MCC4BT2

\$23.30 ~~\$25.90~~

- Low Self-Discharged for Multi-Use
- Pre-charged

eneloop

Standard Capacity Ready to Use Rechargeable Battery - 100%

eneloop™

Ideal for:



Scan to find out more



**Global
No.1
Brand**
Cordless Phones*

*Resource: QYResearch, 2019 Market Share
https://panasonic.com/global/research/

KX-TGF310/ 320 CXM

Colour: Metallic Black

\$129/ \$149

- Large 3.4" Tilt Display LCD
- Dedicated Buttons on Base Unit
- Longer Communication Range 20% UP
- Advanced Answering System (KX-TGF320CXM)



KX-TGH210CXB

Colour: Black

\$109

- Large 1.8" Colour LOD
- Slim Flat Design
- Longer Communication Range 20% UP

Colour



KX-TGK210CXW

Colour: White

\$99

- Harmonizing Design with Home Interior
- Large 1.5" White Backlit LCD
- Longer Communication Range 20% UP
- Handset Speakerphone



KX-TGD310/ 312CXB

KX-TGD310/ 312CXS

Colours: Black/ Silver

\$89/ \$139

- Large 1.8" White Backlit LCD
- Longer Communication Range 20% UP
- Customised Sound System (Equaliser)



KX-TGE110CXB

Colour: Black

\$89

- Large 1.8" Amber Backlit LCD
- Big Illuminated Keypad
- 3 One-touch Memory Dial



KX-TGE210/ 212 CXN

Colour: Champagne Gold

\$99/ \$199

- Large 1.8" White Backlit LCD
- Big Illuminated Keypad
- Amplified Volume & Dedicated Control



KX-TGC310/ 312/ 313 CXB

Colour: Black

\$69/ \$109/ \$149

- Large 1.6" Amber Backlit LCD
- Longer Communication Range 20% UP
- Compact Design



KX-TG2511CXC/ M/ R/ T

Colours: Blue/ Metallic Gray/ Red/ Titanium Black

\$59

- 1.4" Amber Backlit LCD
- Handset Speakerphone
- Longer Communication Range 20% UP



KX-TG2512CXM/ T

Colours: Metallic Gray/ Titanium Black

\$89

- 1.4" Amber Backlit LCD
- Handset Speakerphone
- Longer Communication Range 20% UP



Scan to find out more



MADE IN JAPAN 6-DOOR REFRIGERATOR



NR-F654GT-X **534L**
750 (W) x 1,828 (H) x 745 (D) mm
\$4,999 ~~\$5,999~~

- 7 Day Freshness with Prime Fresh Freezing
- Double Hygiene with Nanoe™X and Ag Clean
- Advance Eco Technology with ENONAVI and INVERTER



7days



PrimeFresh+
FREEZING

Freshness

7 Days Freshness for Fish & Meat¹

Prime Fresh freezes meat & fish lightly at approx. -3°C. Food soft frozen in this way retains freshness for about 7 days¹ without the need to defrost. Select the Prime Fresh+ mode to keep food fresh by soft freezing them at -3°C about four times faster².

Convenient & Time Saving



Easy to Cut Easy to Scoop Easy to Separate Quick Seasoning New Texture

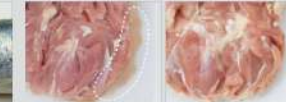
Freshness Retention



Chilled

PrimeFresh+

Nutrient Retention



Defrost After Frozen

PrimeFresh+



¹Data prepared by Panasonic. The effect differs depending on operating conditions, & the type, condition & amount of food stored. ²Test conditions -- Ambient temperature: 32°C; Hertz: 50Hz; Voltage: 220V; Tested model: NR-BC369-VZ/ Temperature settings -- Fridge: Med; Freezer: Med; Prime Fresh: Prime Fresh+/ Normal Prime Fresh/ Food tested: 200g of beef kept in the fridge (at approx. 4°C) and 200g of beef kept at room temperature (at approx. 26°C)/ Test method: Both types of beef were placed in the Prime Fresh Case after the refrigerator that is running reaches a stable state. The time for cooling speed was compared from 4°C/ 26°C to -1.5°C between the Prime Fresh+ mode and the Normal Prime Fresh mode.

Scan to find out more



FRENCH DOOR REFRIGERATOR



NR-CY550GKSG / NR-CY550HKSG **457L**
770 (W) x 1,714 (H) x 743 (D) mm
\$1,629 ~~\$1,999~~

- 7 Day Freshness with Prime Fresh+ Freezing
- Hygienic Storage with Blue Ag+ and Ag Clean
- Advance Eco Technology with ENONAVI and INVERTER

MADE IN JAPAN 6-DOOR REFRIGERATOR



NR-F603GT-X **488L**
685 (W) x 1,828 (H) x 745 (D) mm
\$3,899 ~~\$4,299~~

- 7 Day Freshness with Prime Fresh Freezing
- Double Hygiene with Nanoe™X and Ag Clean
- Advance Eco Technology with ENONAVI and INVERTER

MADE IN JAPAN 6-DOOR REFRIGERATOR



NR-F603GT-W/T/N **488L**
685 (W) x 1,828 (H) x 745 (D) mm
\$3,599 ~~\$3,999~~

- 7 Day Freshness with Prime Fresh Freezing
- Double Hygiene with Nanoe™X and Ag Clean
- Advance Eco Technology with ENONAVI and INVERTER

2-DOOR BOTTOM FREEZER REFRIGERATOR



NR-BC360XSSG **309L**
601 (W) x 1,785 (H) x 656 (D) mm
\$899 ~~\$1,099~~

- 7 Day Freshness with Prime Fresh Freezing
- Hygienic Storage with Ag Clean
- Advance Eco Technology with ENONAVI and INVERTER

2-DOOR TOP FREEZER REFRIGERATOR



NR-BZ600PKSG **541L**
805 (W) x 1,846.5 (H) x 788.5 (D) mm
\$1,399 ~~\$1,599~~

NR-BZ600PSSG **541L**
805 (W) x 1,846.5 (H) x 788.5 (D) mm
\$1,299 ~~\$1,499~~

- Smart Cooling System for Freshness Retention
- Hygienic Storage with Ag Clean & Ag Meat Case
- Advance Eco Technology with ENONAVI and INVERTER

MADE IN JAPAN 6-DOOR REFRIGERATOR



NR-F503GT-W/T/N **402L**
685 (W) x 1,828 (H) x 699 (D) mm
\$3,299 ~~\$3,699~~

- 7 Day Freshness with Prime Fresh Freezing
- Double Hygiene with Nanoe™X and Ag Clean
- Advance Eco Technology with ENONAVI and INVERTER

2-DOOR BOTTOM FREEZER REFRIGERATOR



NR-BY608XSSG **504L**
775 (W) x 1,846 (H) x 741 (D) mm
\$1,429 ~~\$1,799~~

- 7 Day Freshness with Prime Fresh Freezing
- Hygienic Storage with Ag Clean
- Advance Eco Technology with ENONAVI and INVERTER

2-DOOR TOP FREEZER REFRIGERATOR



NR-BV320XSSG **277L**
601 (W) x 1,645 (H) x 656 (D) mm
\$849 ~~\$999~~

- 7 Day Freshness with Prime Fresh Freezing
- Hygienic Storage with Ag Clean
- Advance Eco Technology with ENONAVI and INVERTER

2-DOOR TOP FREEZER REFRIGERATOR



NR-BD460GKSG **405L**
685 (W) x 1,764 (H) x 698 (D) mm
\$1,199 ~~\$1,399~~

NR-BD460PVSG **405L**
685 (W) x 1,764 (H) x 698 (D) mm
\$999 ~~\$1,299~~

- Smart Cooling System for Freshness Retention
- Hygienic Storage with Ag Clean & Ag Meat Case
- Advance Eco Technology with ENONAVI and INVERTER

2-DOOR BOTTOM FREEZER REFRIGERATOR



NR-BX460WSSG **394L**
685 (W) x 1,764 (H) x 698 (D) mm
\$1,299 ~~\$1,499~~

NR-BX460GKSG **394L**
680 (W) x 1,764 (H) x 700 (D) mm
\$1,299 ~~\$1,499~~

NR-BX460XSSG **394L**
685 (W) x 1,764 (H) x 698 (D) mm
\$1,099 ~~\$1,399~~

- 7 Day Freshness with Prime Fresh+ Freezing
- Hygienic Storage with Blue Ag+ and Ag Clean
- Advance Eco Technology with ENONAVI and INVERTER

* Blue Ag+ applies to BX460GKSG only

2-DOOR TOP FREEZER REFRIGERATOR



NR-BL381PSSG **364L**
650 (W) x 1,785 (H) x 656 (D) mm
\$849 ~~\$1,099~~

- Smart Cooling System for Freshness Retention
- Hygienic Storage with Ag Clean & Ag Meat Case
- Advance Eco Technology with ENONAVI and INVERTER

2-DOOR TOP FREEZER REFRIGERATOR



NR-BL351PSSG **324L**
650 (W) x 1,645 (H) x 656 (D) mm
\$799 ~~\$949~~

- Smart Cooling System for Freshness Retention
- Hygienic Storage with Ag Clean & Ag Meat Case
- Advance Eco Technology with ENONAVI and INVERTER



Scan to find out more



MADE IN JAPAN FRONT LOAD WASHER/ DRYER



Water Efficiency: ✓✓✓✓
Water Consumption: 6.00 litres/ kg
Registration No.: WM-20177/021181

NA-D106X1WS3 Dry: 6kg Wash: 10kg
600 (W) x 998 (H) x 665 (D) mm
\$1,899 ~~\$2,299~~

- 34mins Active Speed Wash
- ECO Drying
- Advance Eco Technology with ENONAVI and INVERTER

ActiveFoam ECO Drying ENONAVI INVERTER



BLUE Ag+

Applicable for

NA-S106X1LSG/ NA-V11FX2LSG/
NA-V10FX2LSG/ NA-90FX2WSG

*Blue Ag+ works for about 3 years, if used twice a week with normal water condition (water hardness, water amount & temperature).

99.9%* Bacteria Elimination

Eliminates 99.9% of bacteria from laundry without hot wash using Blue Ag+. This innovative hygiene technology combines silver Ag ions & UV light for a sterilization effect. Tested & certified by Japan Food Research Laboratories.

Less Fading, Less Shrinking



For washing most washable clothes including delicate items.

Ag ion

Infuses water with silver ions (Ag-) to contribute to sterilization

UV Light

Irradiates ultraviolet light to clothes for a strong sterilization effect.

Cold Wash

*MODEL: NA-S106X1LSG / NA-120XALSG/ TESTING INSTITUTION: Japan Food Research Laboratories/ TEST METHOD: Measure the viable cell count of the test cloth to which bacterial liquid adhered/ *TESTING CONDITION: Program: "Cotton (Cold water)" + Ag- (Clothes amount 3kg)/ *ELIMINATING BACTERIA RATE: Staphylococcus aureus (NBRC 12732) up to 99.9% (99.9% is converted value in Panasonic/ REPORT ISSUE DATE: 20 June 2017/ REPORT REFERENCE NO.: 17053841-001-0901).



12



Water Efficiency: ✓✓✓✓
Water Consumption: 5.20 litres/ kg
Registration No.: WM-2020/030409/ TUV

NA-V11FX2LSG 11kg
596 (W) x 845 (H) x 600 (D) mm
\$1,299 ~~\$1,599~~

- 99.99%* Bacteria Elimination with Blue Ag+ and Cold Wash
- Stain Removal and Allergy Care with StainMaster+ and Hot Wash
- Auto Tub Care

StainMaster+ ActiveFoam 3Di INVERTER Active Speed Wash

FRONT LOAD WASHER/ DRYER



Water Efficiency: ✓✓✓✓
Water Consumption: 5.40 litres/ kg
Registration No.: WM-2020/030407/ TUV

NA-S106FX1LS Dry: 6kg Wash: 10kg
\$1,499 ~~\$1,799~~

- 99.99%* Bacteria Elimination with Blue Ag+ and Cold Wash
- Stain Removal and Allergy Care with StainMaster+ and Hot Wash
- Auto Tub Care

StainMaster+ ActiveFoam 3Di INVERTER Active Speed Wash

FRONT LOAD WASHER/ DRYER



Water Efficiency: ✓✓✓✓
Water Consumption: 5.30 litres/ kg
Registration No.: WM-2020/030404/ TUV

NA-S106FG1WS Dry: 6kg Wash: 10kg
\$1,399 ~~\$1,699~~

- Stain Removal and Allergy Care with StainMaster+ and Hot Wash
- Lift Stains Easily with ActiveFoam System
- Auto Tub Care

StainMaster+ ActiveFoam 3Di INVERTER Active Speed Wash

Water Efficiency: ✓✓✓✓
Water Consumption: 4.80 litres/ kg
Registration No.: WM-2020/030424/ TUV

NA-S96FG1WSG Dry: 6kg Wash: 9kg
\$1,199 ~~\$1,499~~

- Stain Removal and Allergy Care with StainMaster+ and Hot Wash
- Auto Tub Care

StainMaster+ ActiveFoam 3Di INVERTER Active Speed Wash

FRONT LOAD WASHER



Water Efficiency: ✓✓✓✓
Water Consumption: 5.60 litres/ kg
Registration No.: WM-2020/030409/ TUV

NA-V10FX2LSG 10kg
596 (W) x 845 (H) x 600 (D) mm
\$1,199 ~~\$1,499~~

- 99.99%* Bacteria Elimination with Blue Ag+ and Cold Wash
- Stain Removal and Allergy Care with StainMaster+ and Hot Wash
- Auto Tub Care

StainMaster+ ActiveFoam 3Di INVERTER Active Speed Wash

FRONT LOAD WASHER



Water Efficiency: ✓✓✓✓
Water Consumption: 5.20 litres/ kg
Registration No.: WM-2020/030410/ TUV

NA-V11FG2WSG 11kg
596 (W) x 845 (H) x 600 (D) mm
\$1,199 ~~\$1,499~~

- 99.99%* Bacteria Elimination with Blue Ag+ and Cold Wash
- Stain Removal and Allergy Care with StainMaster+ and Hot Wash
- Auto Tub Care

StainMaster+ ActiveFoam 3Di INVERTER Active Speed Wash

Water Efficiency: ✓✓✓✓
Water Consumption: 5.80 litres/ kg
Registration No.: WM-2020/030423/ TUV

NA-V10FG2WSG 10kg
596 (W) x 845 (H) x 600 (D) mm
\$1,099 ~~\$1,299~~

- Stain Removal and Allergy Care with StainMaster+ and Hot Wash
- Auto Tub Care

StainMaster+ ActiveFoam 3Di INVERTER Active Speed Wash

DRYER



Water Efficiency: ✓✓✓✓
Water Consumption: 7.30 litres/ kg
Registration No.: WM-2020/029570/ TUV

NH-E80JA1WSG Dry: 8kg
\$699 ~~\$839~~

- Efficient Heating with Smart PTC Heater
- 3 Temperature and 4 Mode (Drying Time) Settings
- Flexible Installation

TOP LOAD WASHER



Water Efficiency: ✓✓✓
Water Consumption: 7.30 litres/ kg
Registration No.: WM-2020/029570/ TUV

NA-FD11AR1BQ 11.5kg
600 (W) x 1,049 (H) x 674 (D) mm
\$729 ~~\$999~~

- Powerful Wash and Rinse with Water Bazooka
- Multi Stain Removal with StainMaster
- Lift Stains Easily with ActiveFoam System

StainMaster ActiveFoam Water Bazooka TD INVERTER

FRONT LOAD WASHER



Water Efficiency: ✓✓✓✓
Water Consumption: 4.60 litres/ kg
Registration No.: WM-2020/030411/ TUV

NA-V90FX2WSG 9kg
596 (W) x 845 (H) x 600 (D) mm
\$999 ~~\$1,199~~

- 99.99%* Bacteria Elimination with Blue Ag+ and Cold Wash
- Stain Removal and Allergy Care with StainMaster+ and Hot Wash
- Auto Tub Care

StainMaster+ ActiveFoam 3Di INVERTER Active Speed Wash

FRONT LOAD WASHER



Water Efficiency: ✓✓✓✓
Water Consumption: 5.10 litres/ kg
Registration No.: WM-2020/030425/ TUV

NA-V90FB1WSG 9kg
596 (W) x 845 (H) x 600 (D) mm
\$899 ~~\$1,099~~

- Bacteria Elimination and Allergy Care with Hot Wash
- Lift Stains Easily with ActiveFoam System
- Auto Tub Care

ActiveFoam INVERTER Active Speed Wash

TOP LOAD WASHER



Water Efficiency: ✓✓✓✓
Water Consumption: 7.40 litres/ kg
Registration No.: WM-2020/029571/ TUV

NA-FD12VR1BQ 12.5kg
600 (W) x 1,069 (H) x 674 (D) mm
\$829 ~~\$1,099~~

- Powerful Wash and Rinse with Water Bazooka
- Stain and Bacteria Removal with StainMaster+ and Hot Wash
- Lift Stains Easily with ActiveFoam System

StainMaster+ ActiveFoam Water Bazooka TD INVERTER ENONAVI

Water Efficiency: ✓✓✓✓
Water Consumption: 7.50 litres/ kg
Registration No.: WM-2020/029754/ TUV

NA-FD10V1BRQ 10kg
554 (W) x 1,070 (H) x 618 (D) mm
\$749 ~~\$999~~

- Powerful Wash and Rinse with Water Bazooka
- Stain and Bacteria Removal with StainMaster+ and Hot Wash
- Lift Stains Easily with ActiveFoam System

StainMaster+ ActiveFoam Water Bazooka TD INVERTER ENONAVI

Water Efficiency: ✓✓✓✓
Water Consumption: 6.90 litres/ kg
Registration No.: WM-2020/029754/ TUV

NA-FD95V1BRQ 9.5kg
554 (W) x 1,050 (H) x 618 (D) mm
\$699 ~~\$939~~

- Powerful Wash and Rinse with Water Bazooka
- Stain and Bacteria Removal with StainMaster+ and Hot Wash
- Lift Stains Easily with ActiveFoam System

StainMaster+ ActiveFoam Water Bazooka TD INVERTER ENONAVI



Water Efficiency: ✓✓✓✓
Water Consumption: 7.20 litres/ kg
Registration No.: WM-2020/029755/ TUV

NA-FD10X1HRQ 10kg
554 (W) x 1,050 (H) x 618 (D) mm
\$649 ~~\$879~~

- Powerful Wash and Rinse with Water Bazooka
- Multi Stain Removal with StainMaster
- Lift Stains Easily with ActiveFoam System

StainMaster+ ActiveFoam Water Bazooka TD INVERTER

Water Efficiency: ✓✓✓✓
Water Consumption: 6.90 litres/ kg
Registration No.: WM-2020/029755/ TUV

NA-FD95X1HRQ 9.5kg
554 (W) x 1,050 (H) x 618 (D) mm
\$629 ~~\$819~~

- Powerful Wash and Rinse with Water Bazooka
- Multi Stain Removal with StainMaster
- Lift Stains Easily with ActiveFoam System

StainMaster+ ActiveFoam Water Bazooka TD INVERTER

Water Efficiency: ✓✓✓✓
Water Consumption: 7.60 litres/ kg
Registration No.: WM-2020/029752/ TUV

NA-FD85X1HRQ 8.5kg
554 (W) x 1,050 (H) x 618 (D) mm
\$579 ~~\$759~~

- Powerful Wash and Rinse with Water Bazooka
- Multi Stain Removal with StainMaster
- Lift Stains Easily with ActiveFoam System

StainMaster+ ActiveFoam Water Bazooka TD INVERTER

Scan to find out more



Scan to find out more



Easy reheating
without over or
undercooking
food

the
Genius
sensor

Panasonic's innovative technology
enhances smart cooking experience

PURE TURBO STEAM CONVECTION OVEN



NN-CS89LBYPQ 31L 1300W

500 (W) x 391 (H) x 437 (D) mm

\$1,199 ~~\$1,599~~

- 2-Level Steam Cooking
- 10 Combination Cooking Modes
- 36 Auto Menu Programs

THE Genius sensor INVERTER FLAT & WIDE

100% PURE STEAM DOUBLE HEATER MICROWAVE OVEN



NN-DS596BYPQ 27L 1000W

512 (W) x 347 (H) x 416 (D) mm

\$599 ~~\$699~~

- 100% Pure Turbo Steam
- Crispy Grill
- Inverter Technology

Steam PLUS INVERTER FLAT & WIDE

SUPERHEATED STEAM CUBIE OVEN



NU-SC300BYPQ 30L 1500W

375 (W) x 476 (H) x 494 (D) mm

\$899 ~~\$1,099~~

- SuperHeated Steam
- Versatile Cooking
- 30 Auto Menu Programs

INVERTER CONVECTION & GRILL MICROWAVE OVEN



NN-CD87KSYPO 34L 1000W

560 (W) x 343 (H) x 450 (D) mm

\$699 ~~\$899~~

- 1300W Grill & Convection Power
- 5 Combination Cooking Programs
- 7 Junior Menu Programs

THE Genius sensor INVERTER

CUBIE STEAM OVEN



NU-SC180BYPQ 20L 1200W

404 (W) x 376 (H) x 404 (D) mm

\$499 ~~\$529~~

- 2 Steam Modes for Matching Ingredients
- 2-Level Convection Cooking
- 24 Auto Menu Programs

COMPACT INVERTER
DOUBLE HEATER MICROWAVE OVEN



NN-DF383BYPQ 23L 1000W

483 (W) x 310 (H) x 396 (D) mm

\$369 ~~\$449~~

- 1000W Top Heater & 600W Bottom Heater
- Large-area Flat Cavity
- Combination Cooking with Inverter Technology

INVERTER FLAT & WIDE



Scan to find out more



VARIABLE PRESSURE 5-LAYER IH RICE COOKER



SR-PX184KSH 1.8L

286 (W) x 266 (H) x 416 (D) mm

\$999 ~~\$1,139~~

- Variable Pressure Cooker
- 7-Layer Diamond "Kamado" Inner Pan
- Various Local Menu Program

IH

5-LAYER IH RICE COOKER



SR-HB184KSH 1.8L

279 (W) x 232 (H) x 348 (D) mm

\$599 ~~\$629~~

- 7-Layer Diamond "Kamado" Inner Pan
- Various Local Menu Program
- Fuzzy Logic Technology

IH

MICOM RICE COOKER



SR-CX188SSH 1.8L

276 (W) x 249 (H) x 384 (D) mm

\$179 ~~\$229~~

- 4.0mm Thickness Inner Pan
- 16 Auto Menu
- Cleaning & Functional Convenience

MICOM RICE COOKER



SR-CX108SSH 1.0L

245 (W) x 212 (H) x 349 (D) mm

\$159 ~~\$199~~

- 4.0mm Thickness Inner Pan
- 16 Auto Menu
- Cleaning & Functional Convenience

MICOM RICE COOKER



SR-CN188WSH 1.8L

276 (W) x 246 (H) x 384 (D) mm

\$129 ~~\$179~~

- 2.2mm Thickness Inner Pan
- 16 Auto Menu
- Cleaning & Functional Convenience

MICOM RICE COOKER



SR-CN108WSH 1.0L

245 (W) x 209 (H) x 349 (D) mm

\$119 ~~\$159~~

- 2.2mm Thickness Inner Pan
- 16 Auto Menu
- Cleaning & Functional Convenience

MICOM RICE COOKER



SR-DF181WSH 1.8L

245 (W) x 247 (H) x 339 (D) mm

\$89.90 ~~\$119~~

- Easy to Operate with Big Slant Control Panel
- One Push Menu Buttons (6 Menus)

SR-DF101WSH 1.0L

245 (W) x 199 (H) x 339 (D) mm

\$79.90 ~~\$109~~

- Easy to Operate with Big Slant Control Panel
- One Push Menu Buttons (6 Menus)

Scan to find out more



Scan to find out more



BREAD MAKER



SD-P2001WSH 450g
260 (W) x 382 (H) x 389 (D) mm
\$439 ~~\$529~~

- Automatic Yeast, Raisins & Nut Dispenser
- 13 Hours Digital Timer
- 16 Menus

SLOW COOKER



NF-N50ASSP 5L
340 (W) x 279 (H) x 293 (D) mm
\$149 ~~\$159~~

- High Quality Ceramic Pot with 3 Heat Settings
- Durable Tempered Glass Lid
- Even Heat Distribution with Side Heater Design

BREAD MAKER



SD-P104WSH 330g
241 (W) x 322 (H) x 304 (D) mm
\$299 ~~\$329~~

- Automatic Yeast, Raisins & Nut Dispenser
- 13 Hours Digital Timer
- 13 Menus

SLOW COOKER



NF-N30ASSP 3.0L
290 (W) x 271 (H) x 246 (D) mm
\$89.90 ~~\$109~~

- High Quality Ceramic Pot with 3 Heat Settings
- Durable Tempered Glass Lid
- Even Heat Distribution with Side Heater Design

KETTLE



NC-HKD122NSY 1.2L
215 (W) x 251 (H) x 158 (D) mm
\$89.90 ~~\$109~~

- Double Inner Wall Kettle
- High Quality Full Metal (SUS 304) Inner Pot
- Auto Shut Off & Boil-Dry Protection

ELECTRIC OVEN



NB-H3801KSP 38L
533 (W) x 364 (H) x 392 (D) mm
\$229 ~~\$269~~

- Upper & Lower Heater
- Double Layer Insulated Glass Door
- Versatile Cooking - 70 to 230°C

ELECTRIC OVEN



NB-H3203KSP 32L
527 (W) x 343 (H) x 392 (D) mm
\$199 ~~\$239~~

- Upper & Lower Heater
- Double Layer Insulated Glass Door
- Versatile Cooking - 70 to 230°C

TOASTER OVEN



NT-H900KSH 9L
366 (W) x 204 (H) x 274 (D) mm
\$59.90 ~~\$69.90~~

- Upper & Lower Heater
- Double Layer Insulated Glass Door
- Versatile Cooking - 70 to 230°C

BLENDER



MX-KM5060SSP 2.0L
188 (W) x 416 (H) x 210 (D) mm
\$149 ~~\$179~~

- 800W Power with V&M Technology
- Durable Stainless Steel Sawtooth Blade
- Wet & Dry Glass Mill

THERMO POT



NC-SU403PZSH 4.0L
245 (W) x 338 (H) x 326 (D) mm
\$229 ~~\$279~~

- U-VIP Saves Energy while Keeping Warm
- Diamond Fluorine & Charcoal (Binchotan) Coated Non-Stick Interior
- 4 Speed Dispenser



NC-EG3000CSH 32L
217 (W) x 275 (H) x 287 (D) mm
\$119 ~~\$139~~

- 4 Keep Warm Temperature
- Easy to Clean & Maintain
- 7 Timer Selection for Energy Saving

HAND MIXER



MK-GH3WSH
93 (W) x 151 (H) x 195 (D) mm
\$49.90 ~~\$54.90~~

- 5 Speed Selection Control Panel
- 2 Attachments (Beaters & Dough Hooks)
- Easy Grip Handle

Scan to find out more



HUMIDIFYING AIR PURIFIER



F-VXK70AWS
Coverage Area: 52m² (560ft²)
\$699 ~~\$799~~
• nanoe™ & Humidification
• HEPA Composite Filter
• ECONAVI

STANDARD AIR PURIFIER



F-PXM55ANS
Coverage Area: 41m² (441ft²)
\$549 ~~\$649~~
• nanoe™
• HEPA Composite Filter
• ECONAVI

ELECTRIC WATER HEATER



DH-3NS1SS
200 (W) x 380 (H) x 85 (D) mm
\$229 ~~\$279~~
• Ag+ Crystal-antibacterial Shower Head
• 3-way Shower Selector
• 9 Safety Points

ELECTRIC WATER HEATER



DH-3NS1SW
200 (W) x 380 (H) x 85 (D) mm
\$199 ~~\$249~~
• Ag+ Crystal-antibacterial Shower Head
• 3-way Shower Selector
• 9 Safety Points

ELECTRIC WATER HEATER



DH-3RL1SW
190 (W) x 380 (H) x 93 (D) mm
\$149 ~~\$199~~
• On/ Off Rotary Switch
• 1-way Shower Selector
• 9 Safety Points

BIDET



DL-AF15RW
\$199 ~~\$229~~
• Ag+ Crystal-Antibacterial Detachable & Soft Close Toilet Seat
• 2 Spray Selection
• Water Filter

16" LIVING FAN



F-409KSNBCGZ
\$199 ~~\$229~~
• 1/F Yuragi Function
• 3-speed & On/ Off Switch
• 6-hrs Electronic Timer with Wireless Remote Control

16" LIVING FAN



F-408HSNCGZ
\$169 ~~\$189~~
• 1/F Yuragi Function
• 3-speed & On/ Off Switch
• 6-hrs Electronic Timer

12" LIVING FAN WITH WIRELESS REMOTE CONTROL



F-307KHTBSGZ
\$109 ~~\$119~~
• 1/F Yuragi Function
• 3-speed & On/ Off Switch
• 4-hrs Electronic Timer with Wireless Remote Control

16" STAND FAN



F-407YSNBNGZ
\$99 ~~\$119~~
• 3-Speed & On/ Off Push Button Switch
• Easy Angle Adjustment

Scan to find out more



CORDLESS STEAM IRON



NI-WL41VSH

\$129 ~~\$199~~

- Cordless Steam Iron
- Auto Shut-off with Carrying Case
- 135cc Detachable Water Tank

CORDLESS STEAM IRON



NI-WL30VSH

\$99 ~~\$159~~

- Cordless Steam Iron
- Multidirection Silver Titanium Soleplate
- 120cc Detachable Water Tank

ELECTRIC STEAM IRON



NI-U400CPH

\$84.90 ~~\$109~~

- Big Soleplate
- Anti-calc & Power Shot
- Easy Maintenance & Long-lasting

ELECTRIC STEAM IRON



NI-E410TMSH

\$42.90 ~~\$54.90~~

- Auto Anti-calc
- Ultra Lightweight and Portable
- Power Wattage 2150W

NI-E410TRSH

\$42.90 ~~\$54.90~~

ELECTRIC STEAM IRON



NI-U600CASH

\$94.90 ~~\$119~~

- Auto Shut-off
- Anti-calc & Power Shot
- Big Soleplate

ELECTRIC STEAM IRON



NI-GSE050ASH

\$189 ~~\$239~~

- 2-stages Variable Steam
- Detachable 2.0L Water Tank
- Powerful Wattage 1800W



HANDHELD VACUUM CLEANER



MC-SB30JW147

\$399

- Powerful Cordless Cleaner with Ultralight Weight (1.6kg)
- House Dust Sensor Detects Dust as Small as 20 Microns
- Versatile with Handheld Style

BAGLESS VACUUM CLEANER



MC-CL789R647

\$299 ~~\$329~~

- Advance Mega Cyclone
- Mattress Nozzle with Dust Sensor
- Max Input Power 2200W
- Mattress Nozzle with Dust Sensor and Curtain Nozzle Included

BAGLESS VACUUM CLEANER



MC-CL787T647

\$269 ~~\$299~~

- Advance Mega Cyclone
- 8 Layers Filtration System
- Max Input Power 2100W
- Mattress Nozzle Included

BAGLESS VACUUM CLEANER



MC-CL573R647

\$169 ~~\$199~~

- Mega Cyclone Bagless Vacuum Cleaner
- 5 Layers Filtration System
- Max Input Power 1800W

BAGLESS VACUUM CLEANER



MC-CL575K647

\$189 ~~\$229~~

- Mega Cyclone Bagless Vacuum Cleaner
- 6 Layers Filtration System
- Max Input Power 2000W
- Curtain Nozzle Included

BAGGED VACUUM CLEANER



MC-CL571A647

\$139 ~~\$159~~

- Mega Cyclone Bagless Vacuum Cleaner
- 5 Layers Filtration System
- Max Input Power 1600W

BAGGED VACUUM CLEANER



MC-CG373R647

\$129 ~~\$159~~

- Clean Exhaust AirH
- Hepa Exhaust Air
- Max Input Power 1800W

BAGGED VACUUM CLEANER



MC-CG371A647

\$99 ~~\$129~~

- 410W Suction Power
- Lightweight with Big Front Handle
- Max Input Power 1600W

Scan to find out more



Scan to find out more



Scan to find out more



NANOE™ & DOUBLE MINERAL HAIR DRYER



EH-NA98RP605/ K605
\$329 ~~\$399~~

- Total Care for Hair, Skin & Scalp
- 1800W nanoe™ & Double Mineral
- Quick Dry Nozzle for Fast Drying



nanoe™ for Healthy & Shiny Hair

Moisture-rich nanoe™ particles penetrate hair & tighten the cuticle, giving your hair gloss, silkiness and making it more manageable.



nanoe™ Moistens Scalp to Keep It Clean & Healthy

Moisture-rich nanoe™ moisturizes your scalp to keep it healthy, preventing the dryness that cause damage to hair.



NANOE™ & DOUBLE MINERAL HAIR DRYER



EH-NE82-K605
\$129

- Fast Drying with Powerful Airflow
- Advanced Heat Protection Sensor
- Double External Ion Outlets & Ion Conditioning



NANOE™ HAIR DRYER



EH-NA65-K605
\$159 ~~\$219~~

- 2000W External nanoe™ Outlets
- Quick-dry Nozzle for Healthy Drying
- Comes with Diffuser



NANOE™ HAIR DRYER



EH-NA45RP685/ W685
\$139 ~~\$199~~

- nanoe™ Technology & Platinum Ions
- Quick-dry Nozzle for Healthy Drying
- Healthy Mode (50°C) for Quick Drying



NANOE™ HAIR DRYER



EH-NA32-T605/ PPN605
\$109 ~~\$155~~

- nanoe™ Technology For Healthy & Shiny Hair
- 1600W External Outlets
- Heat Protection Mode



NANOE™ HAIR DRYER



EH-NA27PN605/ P605
\$99 ~~\$145~~

- nanoe™ Technology For Healthy & Shiny Hair
- Quick-dry Nozzle for Healthy Drying
- Lightweight and Compact for Easy-carry



IONITY HAIR DRYER



EH-NE72-N605
\$89 ~~\$109~~

- Shine Boost Design
- Double External Ion Outlets
- Comes with Diffuser



IONITY HAIR DRYER



EH-NE65-K605
\$59 ~~\$69.98~~

- Powerful Fast Drying
- Ion Conditioning with Moisture Retaining Design
- Lightweight and Compact



IONITY HAIR DRYER



EH-NE44-T605
\$59 ~~\$64.98~~

- Super Quiet Operation
- Ionity Moisture Retaining Design
- Foldable and Compact Design



COMPACT HAIR DRYER



EH-ND43-K605
\$42 ~~\$52.98~~

- 1800W Fast Dry Series
- Heat Protection
- Comes with Diffuser



COMPACT HAIR DRYER



EH-ND64-P605
\$45 ~~\$54.98~~

- Powerful Fast Drying
- Heat Protection Mode
- Lightweight and Compact



COMPACT HAIR DRYER



EH-ND57-H605/ P605
\$39 ~~\$44.98~~

- Super Quiet Operation
- 2 Temperature & 3 Airflows Settings
- Foldable and Compact Design



Scan to find out more



Scan to find out more



DIY IPL DEVICE



ES-WH90-P751
\$699 ~~\$749~~

- Body & Facial Hair Removal
- Glowing and Refined Facial Skin Enhancement
- Quick, Easy & Comfortable to Use



RECHARGEABLE 5-BLADE SHAVER



ES-LV9C-S751
\$459 ~~\$629~~

- 5-Blade Shaver with Multi-Flex 5D-Head
- 30° Nano Polished Inner Blades
- Automatic Cleaning Station

Fully Automatic
Shaver Cleaning
& Charging System



Made in
JAPAN

FACIAL IONIC STEAMER



EH-SA31VP-421
\$229

- Moisture Penetrates Deeply into Skin
- Simple 6-minute Spa
- Compact, Stylish Design



IONIC CLEANSING DEVICE



ES-ST63-P421
\$199 ~~\$239~~

- Brighten Mode Infuses Vitamin C into Skin
- Moisturizing/ Warm Rhythm Mode Deliver Moisturizing Ingredients into Skin
- Cleanse Mode Extracts Dirt from Pores

Cotton Ring
Protective Cap

MICRO-FOAMING DEVICE



EH-SC65-P451
\$179 ~~\$199~~

- Micro-Foaming Cleansing with Attachment
- Special Care with Pore Focus Brush
- Warm Make-up Removal Plate

Soft Brush
Pore Focus Brush



AC RECHARGEABLE WET/ DRY 5-BLADE SHAVER



ES-LV6Q-S751
\$399 ~~\$539~~

- Multi-Flex 5D Head
- 5-Blade Cutting System
- Intelligent Shaving Sensor



Made in
JAPAN

AC RECHARGEABLE 5-BLADE SHAVER



ES-LV5C-K751
\$369 ~~\$469~~

- Multi-Flex 5D Head
- 5-Blade Cutting System
- Ultra Fast 14,000cpm Liner Motor



Made in
JAPAN

RECHARGEABLE 3-BLADE SHAVER



ES-ST2N-K751
\$139.90 ~~\$199~~

- 3-Blade Cutting System With Sharp 30° Inner Blade
- Wet/ Dry Shaving
- Fast and Powerful, 13,000 cpm Direct Liner Motor Drive



NANO™ HAIR STYLER



EH-HS99-K605
\$199

- Advanced Stable Heater
- Even Heat Distribution Plate
- nano™ Technology for Smooth & Shiny Finish



IONITY MULTI- STYLING STRAIGHTENER



EH-HV70-K605
\$109 ~~\$129~~

- Ionity Multi-Styling Straightener
- Keratin & Coconut Oil-Infused Ceramic Plate
- Ion Conditioning for Beautiful Hair



MULTI- STYLING STRAIGHTENER



EH-HV52-K605
\$79 ~~\$95.99~~

- Keratin & Coconut Oil-Infused Ceramic Plate
- Even Heat Distribution Plate
- Versatile Styling Capabilities



BODY HAIR TRIMMER



ER-GK20-K401
\$99 ~~\$109~~

- i-Shaped Design for Efficient Trimming
- Skin Protective Blade Technologies
- Waterproof Design

TRIMMER



ER-GB60-K451
\$89 ~~\$102.99~~

- Precision Trimmer for Detailed Trimming
- Versatile Attachments for Various Style
- Acute 45° Blade

ALKALINE IONIZER



TK-AS66-ZEX
\$1,999 ~~\$2,399~~

- Advanced Water Purification & 6pH Levels
- Eliminates up to 99.999% of Bacteria
- Generates 7-kinds of Water

HAIR STYLER



EH-KE46-VP605
\$75.90 ~~\$85.99~~

- Ion Conditioning for Glossy Hair
- 3 Attachments
- 3 Setting Modes



HAIR STYLER



EH-HT40-K605
\$99 ~~\$129~~

- Static Electricity Suppression Brush
- 32mm Barrel for Soft Large Curls
- Safe and Easy to Use



ORAL IRRIGATOR



EW1511W451
\$144.90 ~~\$179~~

- Ultrasonic Technology with Powerful Water Jet
- Full Water Tank Provides 60 Sec of Use
- Quick 1-hour Charge

ORAL IRRIGATOR



EW1211A425
\$133.90

- Effective Dental Care with 2 Water Jets
- Advanced Triple Oral Care
- Easy-grip Design

ALKALINE IONIZER



TK-AS45-ZEX
\$1,199 ~~\$1,599~~

- Advanced Water Purification & 6pH Levels
- 3-Alkaline Levels, 1-Weak Acidic & 1-Purified
- Removes 17 Substances

