

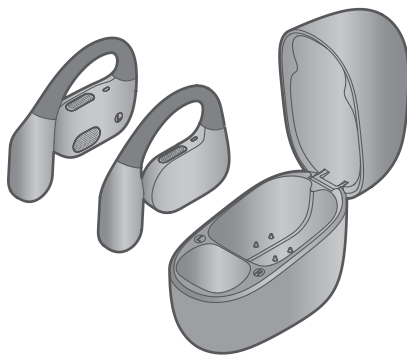
# Panasonic®

## Owner's Manual

---

### Digital Wireless Stereo Headphones

Model No. **RB-F10**



**Thank you for purchasing a Panasonic product.**

Please read these owner's manual before using the unit and save them for future reference.

## Table of Contents

---

### Before use

Accessories .....	3
(Important) About water resistance .....	3
Charging .....	4
How to fit the earphones .....	5
Part names .....	6
Turning the earphones on and off .....	7
Connecting to a Bluetooth® device .....	7

### Operation

Listening to music .....	9
Making a phone call .....	9
Activating voice functions .....	10
Operating with the touch sensors .....	10

### Other

Restoring to the factory settings .....	12
Firmware updates .....	12
Troubleshooting .....	12
Specifications .....	14
Cleaning the unit .....	17

## ***Before use***

### **Expressions used in this document**

- The product illustrations may differ from the actual product.

## **Accessories**

### **□ 1 x USB charging cord**

(Input plug: USB Type-A Shape, Output plug: USB Type-C Shape)

### **Only for U.S.A.**

To order accessories, refer to "Limited Warranty".

## **(Important) About water resistance**

### **Cautions for use in places where the unit may get wet (from spray, rain, etc.)**

Observe the following precautions. Incorrect operation cause malfunction.

- Do not charge the charging cradle or the earphones while your hands are wet or while there are still water droplets on this unit (earphones or charging cradle).
- Do not use the USB charging cord.
- Do not apply soapy water or detergent or immerse in water.
- If water drops get onto the unit in cold climates, wipe off with a soft, dry cloth.
- If water gets onto the earphones or microphone, wipe off with a soft, dry cloth.
  - Sound may get smaller or get distorted.
  - If there are water drops left in the speakers, you may hear the sound at reduced volume or you may not be able to hear anything at all. If this is the case, get rid of the water drops from the earphones.

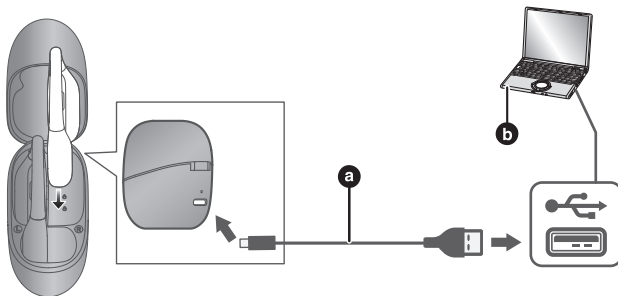
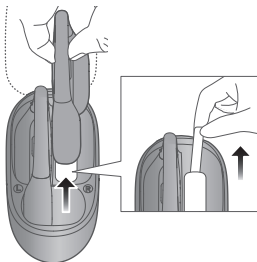
If water does get into the earphones or the charging cradle, cease use and consult your dealer.  
Malfunction due to improper handling by you will not be covered by the warranty.

## Before use

### Charging

The chargeable battery (installed in the unit) is not charged initially. Charge the battery before using the unit.

**Before initial use:** Remove the insulation sheet before charging.



**a:** USB charging cord (supplied)

**b:** Power source (e.g., PC)

- 1 Use the USB charging cord (supplied) to connect the charging cradle to a 5.0 V power source (500 mA or higher).**
  - Charging cradle starts charging:
  - Battery fully charged: The status indicator lights red.
  - Battery is charging: The status indicator flashes red.
  - Check the direction of the USB charging cord terminals and plug in/out straight holding onto the plug. (It may result in malfunction by the deforming of the terminal if it is plugged in obliquely or in wrong direction.)
- 2 Put the earphones into the charging cradle.**
  - Confirm the L side and R side of the earphones, then insert in charging cradle.
  - **Charging time (The time required to charge the batteries from empty to full)**

## Before use

Earphones	Approx. 2.5 hours
Charging cradle	Approx. 2.5 hours
Earphones with charging cradle	Approx. 2.5 hours

### Note:

- Do not use any other USB charging cords except the supplied one. Doing so may cause malfunction.
- Charging may not be performed or may stop if the computer is in or switched to standby or sleep mode.

## Battery level notification (USB charging cord not connected)

When you put the earphones into the charging cradle, the status indicator shows the charge remaining in the battery of the earphones and charging cradle.

Charging cradle	Charging status
Status Indicator	
Lights off	Earphone's batteries are full.
White* <sup>1</sup>	Earphone's batteries are charging.
White (Flashes)* <sup>2</sup>	Charging cradle's battery is empty.

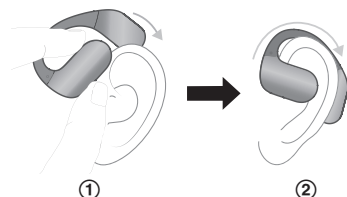
\*<sup>1</sup> When you take the earphones out of the charging cradle, the status indicator lights for about 13 seconds.

\*<sup>2</sup> The status indicator flashes, earphone's batteries are not charged. Charge the unit (page 4).

### Note:

- When the status indicator remains off even after putting the earphones into the charging cradle, the earphones cannot be turned on by taking out the earphones. When using the earphones, turn the earphones on manually (page 7).

## How to fit the earphones

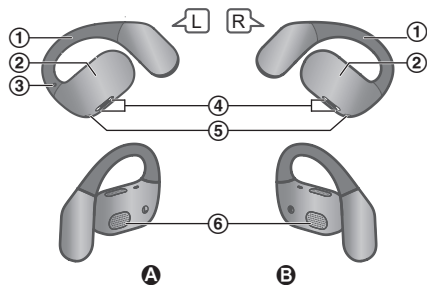


- 1 Check the orientation L (left) and R (right) of the earphones.
- 2 Fit firmly by turning the earphones a small amount at a time.
  - Confirm that the earphones will not fall from your ears after you have fitted them.
  - The left earphone has a raised dot indicating the L side.

## Before use

## Part names

### Main unit (Earphones)

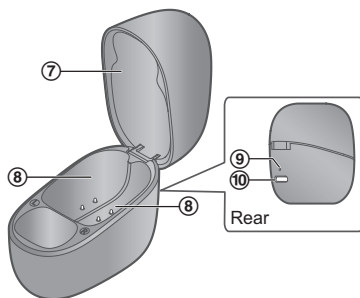


**A** L side earphone (left)

**B** R side earphone (right)

- ① Ear hooks
- ② Touch sensor
  - Touching these enables you to perform a variety of operations. (page 10, "Operating with the touch sensors")
- ③ Raised dot indicating the L side
- ④ Charging contacts
- ⑤ Microphones
- ⑥ Speakers

### Main unit (Charging cradle)



- ⑦ Charging cradle lid
- ⑧ Charging slot
- ⑨ Status indicator

## Before use

### ⑩ Charging terminal

- Connect the USB charging cord (supplied) to this terminal when charging. (page 4, "Charging")

## Turning the earphones on and off



### ■ To turn the earphones on

Take the earphones out of the charging cradle.

### ■ To turn the earphones off

Put the earphones into the charging cradle.

### ■ To turn the earphones on and off manually

To power on: Touch and hold the L touch sensor for about 3 seconds to activate the left side, or the R touch sensor for the right side.

To power off: Touch and hold (L or R) touch sensor for about 5 seconds after disabling Bluetooth® connection from the device.

### ■ Auto power off

If the earphones have not connected the device for 5 minutes continually, earphones power off automatically.

## Connecting to a Bluetooth® device

### Preparation

- Put the earphones into the charging cradle.
- Place the Bluetooth® device within approx. 1 m (3.3 ft) from the unit.
- Check the device operation using its operation instructions as required.

### Connecting by pairing (registering) your earphones with a Bluetooth® device for the first time

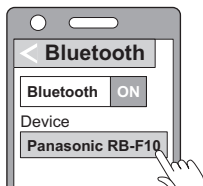
#### Important:

- Depending on the connected Bluetooth® device, a loud sound may be output during playback. Check the volume setting of the Bluetooth® device before starting playback.
- 1 Put both earphones (L and R) into the charging cradle and charge.
  - 2 Take both earphones (L and R) out of the charging cradle and wear them.
    - The earphones will automatically go into pairing mode by announcing "Pairing".

## Before use

---

- 3 Turn on the Bluetooth® device and enable the Bluetooth® function.
- 4 From the Bluetooth® menu of the Bluetooth® device, select device name “Panasonic RB-F10”.



- 5 Confirm that the earphones and the Bluetooth® device are connected.
- 

## How to pair additional devices

You can pair a maximum of 10 Bluetooth® devices.

### ■ To pair the 2nd and subsequent devices

- 1 Put both earphones (L and R) into the charging cradle and charge.
- 2 Take both earphones (L and R) out of the charging cradle and wear them.
- 3 Touch and hold both touch sensors (L and R) for about 5 seconds.
  - DO NOT UNPAIR from the device's Bluetooth® settings.
  - The earphones will automatically disconnect from paired devices and go into pairing mode by announcing “Disconnected” and then “Pairing”.
- 4 Turn on the Bluetooth® device and enable the Bluetooth® function on the next device you want to pair.
- 5 From the Bluetooth® menu of the Bluetooth® device, select device name “Panasonic RB-F10”.
- 6 Confirm that the earphones and the Bluetooth® device are connected.

### ■ To establish the multi-point connection

This unit can connect up to 2 Bluetooth® devices at the same time.

- 1 To use this feature, continue from step 6, “To pair the 2nd and subsequent devices” (page 8).
- 2 Reconnect from the first Bluetooth® device.

### Note:

- This unit remembers the device lastly connected. The unit may connect automatically after turning on the power of this unit.
- The unit will automatically turn off if it is in pairing mode and not connected to a device for 5 minutes. To turn it back on, refer to “Turning the earphones on and off” (page 7) and then do pairing again in “How to pair additional devices” (page 8).
- When you pair a device after the maximum has been exceeded, previous devices are overwritten. To use overwritten devices again, do the pairing again.
- For information about using the Bluetooth® devices, please refer to the manuals of the Bluetooth® devices.



### Listening to music

If the Bluetooth® compatible device supports the “A2DP” and “AVRCP” Bluetooth® profiles, music can be played back with remote control operations on the unit.

- A2DP (Advanced Audio Distribution Profile): Transmits audio to the unit.
- AVRCP (Audio/Video Remote Control Profile): Allows remote control of the device using the unit.

- 1 Connect the Bluetooth® device and the unit. (page 7, “Connecting to a Bluetooth® device”)**
- 2 Select and play the music or the video on the Bluetooth® device.**
  - The unit's earphones will output the music or the audio of the video being played back.
  - For operating procedures during music playback. (page 10, “Operating with the touch sensors”)
  - Operating time may become shorter depending on the usage conditions.

#### Note:

- The unit might leak sound depending on the volume level.
- When the volume is increased to near maximum level, music may sound distorted. Decrease the volume until the distortion is cleared.
- When using a multi-point connection, if you start playing music on one device while another device is already playing, you may experience delays in audio switching or it may not switch correctly. To resolve this, please pause the music on the other device and play music only on the device you wish to listen to.

### Making a phone call

With Bluetooth® enabled phones (cell phones or smartphones) that support the “HFP” Bluetooth® profile, you can use the unit for phone calls.

- HFP (Hands-Free Profile):  
This profile provides for incoming and outgoing communication.  
(This unit does not have a function that allows you to make phone calls independently of a Bluetooth® enabled phone.)

- 1 Connect the Bluetooth® device and the unit. (page 7, “Connecting to a Bluetooth® device”)**
- 2 Touch a touch sensor (L or R) on the earphone once to answer an incoming call.**
  - During an incoming call, ringtone will sound from the unit.
  - To reject a phone call, touch and hold a touch sensor (L or R) for about 2 seconds.
- 3 Start talking.**
- 4 Touch and hold a touch sensor (L or R) on the earphone for about 2 seconds to end the call.**

## Operation

### Activating voice functions

You can use a touch sensor on the earphone to activate the voice functions (Siri, Google Assistant, etc.) on your smartphone or similar device.

- 1 **Connect the Bluetooth® device and the unit.** (page 7, “Connecting to a Bluetooth® device”)
- 2 **Touch and hold the L touch sensor for 2 seconds to activate the voice function.**
  - The voice assistant function on the Bluetooth® device is activated.

**Note:**

- For details about voice function commands, refer to the owner’s manual for the Bluetooth® device.
- The voice function may not work depending on the smartphone, etc. and specifications.

### Operating with the touch sensors

Function	Touch sensor (L)	Touch sensor (R)
<b>Listening to music</b>		
Playback/pause	Touch once	
Forward a track	–	Touch rapidly 2 times
Back a track	–	Touch rapidly 3 times
Volume up	Touch rapidly 3 times	–
Volume down	Touch rapidly 2 times	–
<b>Making a phone call</b>		
Receiving a phone call	Touch once while receiving the call	
End a phone call	Touch and hold for about 2 seconds during the call	
Reject a phone call	Touch and hold for about 2 seconds while receiving the call	
Volume up	Touch rapidly 3 times	–
Volume down	Touch rapidly 2 times	–
<b>Start the voice assistant</b>	Touch and hold for about 2 seconds	–
<b>Turning on</b>	Touch and hold for about 3 seconds	Touch and hold for about 3 seconds
<b>Turning off</b>	Touch and hold for about 5 seconds in disconnected state	

**Note:**

- You can also use just one side of the earphones independently. (page 11, “Using just one earphone”)
- Depending on the connected devices, operating systems, and applications, some functions may not respond or may operate differently than described above when using the touch sensors on the earphones. Please check the status of the connected devices and perform any necessary operations on the connected devices.

## Operation

- A beep will play to indicate that you have reached the maximum or minimum volume level.

### Using just one earphone

By pairing (registering) this unit, you can also use just one of the earphones independently. For example, if you take just the R side earphone out and leave the L side earphone in the charging cradle, the R side earphone will connect to the smartphone. This way, you can listen to music or make a call with one earphone while charging the other. The sound will be monaural.

- When you are using just one of the earphones, taking the other earphone out of the charging cradle will automatically connect the earphones wirelessly with each other and switch use to both earphones. The sound will be stereo.
- During listening to music, the “forward a track” and “back a track” operation is not available using the L side earphone while the R side earphone is charging.
- During listening to music, the “volume up” and “volume down” operation is not available using the R side earphone while the L side earphone is charging.

## Other

---

### Restoring to the factory settings

When you want to delete all pairing device information, etc. in the earphones, you can restore the earphones to the factory settings (original settings upon purchase).

**Important:**

- Charge the earphones before restoring the earphones to their factory settings.

- 1 **Take both earphones (L and R) out of the charging cradle.**
- 2 **Touch the touch sensor (L or R) rapidly 7 times in disconnected state.**
  - When the reset is finished, the unit beeps.

**Note:**

- To re-pair the earphones with a Bluetooth® device, delete the registered information (device name: "Panasonic RB-F10") on the device, then pair the earphones with the Bluetooth® device again (page 7).

### Firmware updates

If it is necessary to update the firmware for the unit, we will post a notification on the following website.

<https://panasonic.jp/support/global/cs/audio/download/index.html#headphone>

### Troubleshooting

Before requesting service, make the following checks. If you are in doubt about some of the check points, or if the remedies indicated do not solve the problem, consult your dealer for instructions.

#### Does not connect with the Bluetooth® device.

- You can pair a maximum of 10 Bluetooth® devices. When you pair a device after the maximum has been exceeded, previous devices are overwritten. To use overwritten devices again, do the pairing again.
- Forget or unpair this unit from the Bluetooth® menu on the Bluetooth® device, and then pair it again (page 8).

#### The left and right batteries deplete at different rates.

- There may be some difference between left and right due to signal and usage condition.

#### Cannot charge the unit.

- Make sure to charge in a room temperature between 10 °C (50 °F) and 35 °C (95 °F).  
In this case, the earphones are not charging even when:
  - the USB charging cord is connected to the charging cradle, the status indicator lights off.
  - the USB charging cord is not connected to the charging cradle and the earphones are put in it, the status indicator lights in white.
- Re-insert the earphones to cradle in case earphones are not charging.

## **Other**

---

- Is the unit already charged? If the unit is fully charged, the status indicator will light red immediately.
- If the status indicator does not flash or light even after putting the earphones into the charging cradle, there is no charge remaining in the charging cradle battery. First charge the charging cradle.
- Is the USB charging cord connected firmly to the USB terminal of the computer?
- Have the earphones been put into the charging cradle correctly? (page 4)
- Make sure the computer is turned on and is not on standby or sleep mode.  
Is the USB port you are currently using working properly? If your computer has other USB ports, unplug the connector from its current port and plug it into one of the other ports.
- If the measures mentioned above are not applicable, unplug the USB charging cord and plug it in again.
- If the charging time and operating time get shorter, the batteries in the earphones and charging cradle may be getting depleted.

---

### **Cannot operate the earphones.**

- Try turning the power off and on (page 7).
- Please restore factory setting (page 12).

---

### **The earphones do not turn on automatically.**

- Touch and hold touch sensor for about 3 seconds, earphones turn on manually (page 7).

---

### **No sound.**

- Make sure that the earphones and the Bluetooth® device are connected correctly.
- Check if music is playing on the Bluetooth® device.
- Make sure that the earphones are turned on.
- Pair and connect the Bluetooth® device and the earphones again (page 8).
- Check if the Bluetooth® compatible device supports "A2DP" profile. For details on profiles, see "Listening to music" (page 9). Also refer to the operating manual for the Bluetooth® compatible device.

---

### **Low volume.**

- Increase the volume on the Bluetooth® device, not just on the earphones.

---

### **Sound from the device is cut off. / Too much noise. / Sound quality is bad.**

- Sound may be disrupted if signals are blocked. Do not fully cover the earphones with the palm of your hand, etc.
- The device may be out of the 10 m (33 ft) communication range. Move the device closer to the earphones.
- Remove any obstacle between the earphones and the device.
- Switch off any wireless LAN device when not in use.

---

### **The voice of the person on the other end of the call is small.**

- Increase the volume on the Bluetooth® device, not just on the earphones.

## Other

### Cannot make a phone call.

- Check if the Bluetooth® compatible device supports “HFP” profile. For details on profiles, see “Listening to music” (page 9) and “Making a phone call” (page 9). Also refer to the operating manual for the Bluetooth® enabled phone.
- Check the audio settings on the Bluetooth® compatible telephone, and if the setting does not allow communication with this unit, change the setting (page 7).

## Specifications

### ■ General

<b>Power supply (Charging cradle)</b>	DC 5 V, 500 mA
<b>Internal battery</b>	Earphones: 3.8 V, Lithium polymer 68 mAh Charging cradle: 3.7 V, Lithium polymer 500 mAh
<b>Operating time*1 (Earphones)</b>	Approx. 7.0 hours (AAC) Approx. 7.0 hours (SBC)
<b>Operating time*1 (Earphones with charging cradle)</b>	Approx. 25.0 hours (AAC) Approx. 25.0 hours (SBC)
<b>Quick charge operating time*1 (Earphones)</b>	15 min. charge, Approx. 60 min. (AAC)
<b>Charging time*2 (25 °C (77 °F))</b>	Earphones: Approx. 2.5 hours Charging cradle: Approx. 2.5 hours Earphones with charging cradle: Approx. 2.5 hours
<b>Charging temperature range</b>	10 °C to 35 °C (50 °F to 95 °F)
<b>Operating temperature range</b>	0 °C to 40 °C (32 °F to 104 °F)
<b>Operating humidity range</b>	35 %RH to 80 %RH (no condensation)
<b>Mass (Weight)</b>	Earphone: Approx. 8.7 g (0.31 oz) (one side only: L and R are the same) Charging cradle: Approx. 36.0 g (1.3 oz)

\*1 It may be shorter depending on the operating conditions.

\*2 The time required to charge the batteries from empty to full.

### ■ Bluetooth® section

<b>Bluetooth® system specification</b>	Ver. 5.4
<b>Wireless equipment classification</b>	Class 2
<b>Max RF Power (e.i.r.p)</b>	4 dBm

## Other

<b>Frequency band</b>	2402 MHz to 2480 MHz
<b>Supported profiles</b>	A2DP, AVRCP, HFP
<b>Supported codec</b>	SBC, AAC
<b>Operating distance</b>	Up to 10 m (33 ft)

### ■ Earphones section

<b>Driver units</b>	17 mm x 12 mm (11/16 in x 1/2 in)
<b>Microphone</b>	Mono

### ■ Charging cradle section

<b>Charging terminal</b>	USB Type-C Shape
--------------------------	------------------

### ■ Accessory section

<b>USB Charging Cord</b> (Input Plug: USB Type-A Shape, Output Plug: USB Type-C Shape)	Approx. 0.2 m (0.66 ft)
--	-------------------------

- Specifications are subject to change without notice.

## Trademarks

- The Bluetooth® word mark and logos are registered trademarks owned by Bluetooth SIG, Inc. and any use of such marks by Panasonic Holdings Corporation is under license. Other trademarks and trade names are those of their respective owners.
- Siri is a trademark of Apple Inc., registered in the U.S. and other countries.
- Google Assistant is a trademark of Google LLC.
- Other system names and product names appearing in this document are in general the registered trademarks or trademarks of the respective developer companies. Note that the ™ mark and ® mark do not appear in this document.

This product incorporates the open source software other than the software licensed under the GPL V2.0 and/or LGPL V2.1. The software categorized as above are distributed in the hope that it will be useful, but WITHOUT ANY WARRANTY, without even the implied warranty of MERCHANTABILITY or FITNESS FOR A PARTICULAR PURPOSE. Please refer to the detailed terms and conditions thereof shown at the following web page.  
<https://panasonic.jp/support/global/cs/audio/download/index.html>

## About Bluetooth®

Panasonic bears no responsibility for data and/or information that is compromised during a wireless transmission.

Frequency band used: 2.4 GHz

## Other

### Certification of this unit

- This unit conforms to frequency restrictions and has received certification based on frequency laws. Thus, a wireless permit is not necessary.
- The actions below are punishable by law in some countries:
  - Taking apart/modifying this unit.
  - Removing specification indications.

### Restrictions of use

- Wireless transmission and/or usage with all Bluetooth® equipped devices is not guaranteed.
- All devices must conform to standards set by Bluetooth SIG, Inc.
- Depending on the specifications and settings of a device, it can fail to connect or some operations can be different.
- This unit supports Bluetooth® security features. But depending on the operating environment and/or settings, this security may not be sufficient. Transmit data wirelessly to this unit with caution.
- This unit cannot transmit data to a Bluetooth® device.

### Range of use

- Use this unit at a maximum range of 10 m (33 ft).  
The range can decrease depending on the environment, obstacles or interference.

### Interference from other devices

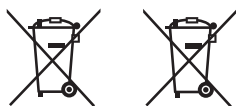
- This unit may not function properly and troubles such as noise and sound jumps may arise due to radio wave interference if this unit is located too close to other Bluetooth® devices or the devices that use the 2.4 GHz band.
- This unit may not function properly if radio waves from a nearby broadcasting station, etc. is too strong.

### Intended usage

- This unit is for normal, general use only.
- Do not use this system near an equipment or in an environment that is sensitive to radio frequency interference (example: airports, hospitals, laboratories, etc).

## Disposal of Old Equipment and Batteries

### Only for European Union and countries with recycling systems



These symbols on the products, packaging, and/or accompanying documents mean that used electrical and electronic products and batteries must not be mixed with general household waste. For proper treatment, recovery and recycling of old products and used batteries, please take them to applicable collection points in accordance with your national legislation.

By disposing of them correctly, you will help to save valuable resources and prevent any potential negative effects on human health and the environment.

For more information about collection and recycling, please contact your local authority. Penalties may be applicable for incorrect disposal of this waste, in accordance with national legislation.



## Other

### Note for the battery symbol (bottom symbol):

This symbol might be used in combination with a chemical symbol. In this case it complies with the requirement set by the Directive for the chemical involved.

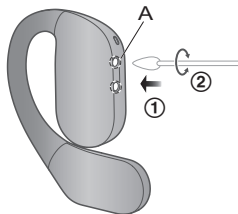
### Note for the batteries removal in the European Union:

- For your safety, you must not attempt to remove the batteries yourself.
- Please contact your local service center for information and assistance with batteries removal.

## Cleaning the unit

- Use a soft, dry cloth to wipe the earphones.
- For the earphone mesh, gently clean with a dry cotton swab, then wipe with a soft cloth.

### Clean the charging contacts of earphones



Use pointed cotton swab to gently wipe the charging contacts of the earphones to remove foreign material.

- 1 Touch the tip of the pointed cotton swab to the charging contacts (A).
- 2 Rotate the cotton swab to wipe away dirt.

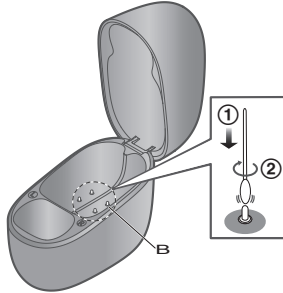
## Other

---

### Clean the charging contacts of charging cradle

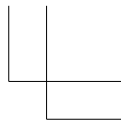
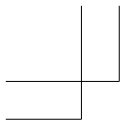
**Important:**

Do not apply force to the charging contacts from the side or at any angle. (It may cause damage)



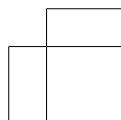
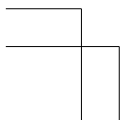
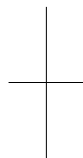
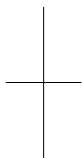
Use cotton swab to gently clean the charging contacts of the charging cradle.

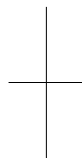
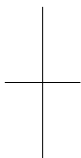
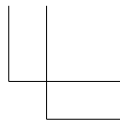
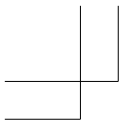
- 1 Use a cotton swab to the tip of the charging contacts (B) from above.**
- 2 Wipe off dirt by stroking the tip of the charging contacts with a cotton swab.**



**Notes**

---





Panasonic System Networks Malaysia Sdn. Bhd.  
PLO No. 1, Kawasan Perindustrian Senai  
Senai, Johor 81400 Malaysia  
<http://www.panasonic.com>

© Panasonic System Networks Malaysia Sdn. Bhd. 2025

**PNQP1960ZA** PP0325BQ0

