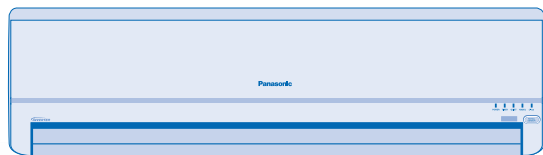


Panasonic®

Operating Instructions Air Conditioner



Indoor Unit
CS-E18GKR
CS-E21GKR
CS-E24GKR
CS-E28GKR

Outdoor Unit
CU-E18GKR
CU-E21GKR
CU-E24GKR
CU-E28GKR



Before operating the unit, read these operating instructions thoroughly and keep them for future reference.

QUICK GUIDE



Manufactured by:

Panasonic HA Air-Conditioning (M) Sdn. Bhd.

Lot 2, Persiaran Tengku Ampuan, Section 21, Shah Alam Industrial Site,
40300 Shah Alam, Selangor, Malaysia.

© 2007 Panasonic HA Air-Conditioning (M) Sdn. Bhd. (11969-T). All rights reserved. Unauthorized copying and distribution is a violation of law.

SAFETY PRECAUTIONS

DEFINITION

To prevent personal injury, injury to others, or property damage, please observe the following. Incorrect operation due to failure to follow instructions may cause harm or damage, the seriousness of which is classified as below:



Warning This sign warns of death or serious injury.



Caution This sign warns of injury or damage to property.

The instructions to be followed are classified by the following symbols:



This symbol denotes an action that is **PROHIBITED**.



These symbols denote actions that are **COMPULSORY**.



Warning



Caution

Remote Control



- Do not use rechargeable (Ni-Cd) batteries.
- Do not allow infants and small children to play with the remote control to prevent them from accidentally swallowing the batteries.



- Remove the batteries if the unit is not going to be used for a long period of time.
- New batteries of the same type must be inserted following the polarity stated to prevent malfunction of the remote control.

Indoor Unit



- Do not install, remove and reinstall the unit by yourself; improper installation will cause leakage, electric shock or fire. Please consult an authorized dealer or specialist for the installation work.
- Do not insert your fingers or other objects into the indoor or outdoor unit.
- Do not attempt to repair the unit by yourself.

Indoor Unit



- Do not install the unit in a potentially explosive atmosphere.
- Do not wash the unit with water, benzene, thinner or scouring powder.
- Do not use for other purposes such as preservation of food.
- Do not use any combustible equipment in front of the airflow outlet.
- Do not expose directly to cold air for a long period.
- Ensure that the drainage pipe is connected properly. Otherwise, leakage may occur.
- Aerate the room regularly.



Power Supply



- Switch off the power supply before cleaning or servicing.
- Turn off the power supply if the unit is not used for a long period of time.
- This air conditioner is equipped with a built-in surge protective device. However, in order to further protect your air conditioner from being damaged by abnormally strong lightning activity, you may want to disconnect it from the power supply. Do not touch the air conditioner during lightning, it may cause electric shock.

Power Supply



- Do not share the same power outlet with other equipment.
- Do not modify power cords.
- Do not use extension cords.
- Do not operate with wet hands.



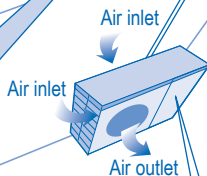
- Use the specified supply cord.
- If the supply cord is damaged, it must be replaced by the manufacturer, its service agent or similarly qualified persons in order to avoid a hazard.



- This equipment must be earthed and strongly recommended to be installed with Earth Leakage Circuit Breaker (ELCB) or Residual Current Device (RCD). Otherwise, it may cause electrical shock or fire in case of malfunction.



- In case of emergency or abnormal conditions (burnt smell, etc), turn off the power supply, and consult your nearest dealer.



Outdoor Unit



- Do not sit or place anything on the indoor or outdoor unit.
- Do not touch the sharp aluminium fin.



- Ensure that the drainage pipe is connected properly. Otherwise, leakage may occur.
- After long periods of use, make sure the installation rack is not damaged.

REGULATORY INFORMATION

Thank you for purchasing
Panasonic Air Conditioner

The appliance is not intended for use by young children or the infirm person without supervision. Young children should be supervised to ensure that they do not play with the appliance.

OPERATION CONDITION

Use this air conditioner under the following temperature range

Temperature (°C)		Indoor		Outdoor	
		*DBT	*WBT	*DBT	*WBT
COOLING	Maximum	32	23	43	26
	Minimum	16	11	16	11
HEATING	Maximum	30	-	24	18
	Minimum	16	-	-5	-6

* **DBT**: Dry bulb temperature

* **WBT**: Wet bulb temperature

TABLE OF CONTENTS

SAFETY PRECAUTIONS	2
REGULATORY INFORMATION	3
PRODUCT OVERVIEW & OPERATIONS	4~5
CARE & CLEANING	6
TROUBLESHOOTING	7
QUICK GUIDE	BACK COVER

NOTE :

The illustrations in this manual are for explanation purposes only and may differ from the actual unit. It is subjected to change without notice for future improvement.



ENVIRONMENTAL REQUIREMENTS

Battery Disposal

The batteries must be recycled or disposed of properly.



END-OF-LIFE DISPOSAL

"Instructions for end-user" for air conditioners:

Information on Disposal in other countries outside the European Union

This symbol is only valid in the European Union. If you wish to discard this product, please contact your installer, dealer or local authority and ask for the correct method of disposal.

PRODUCT OVERVIEW & OPERATIONS

e-ion AIR PURIFYING SYSTEM



Do not touch during operation

e-ion filters

Active e-ion Power Module

Active e-ion Generator

Front panel

Airflow direction louver
 • Do not adjust by hand.

Receiver

Maximum distances: 8m

Auto OFF/ON button

- Used when remote control is misplaced or malfunction.

Action	Mode
Press once.	Auto
Press and hold until 1 beep is heard, then release.	Cooling
Press and hold until 1 beep is heard, then release. Press again until 2 beeps, then release.	Heating
Press the button to turn off.	

INDICATOR

POWER TIMER QUIET POWERFUL e-ion



Remote control display



TO TURN ON OR OFF THE UNIT

- Please be aware of the OFF indication on the remote control display to prevent the unit from starting / stopping improperly.



TEMP

TO SET TEMPERATURE

- Selection range: 16°C ~ 30°C.
- Operating the unit within the recommended temperature could induce energy saving.
 HEAT mode : 20°C ~ 24°C.
 COOL mode : 26°C ~ 28°C.
 DRY mode : 1°C ~ 2°C lower than room temperature.



TO SELECT OPERATION MODE

AUTO mode - For your convenience

- Unit selects operation mode every 30 minutes according to temperature setting, outdoor and room temperature. During operation mode selection the power indicator blinks.

HEAT mode - To enjoy warm air

- Unit takes a while to warm up. The power indicator blinks during this operation.

COOL mode - To enjoy cool air

DRY mode - To dehumidify the environment

- Unit operates at low fan speed to give a gentle cooling operation.

FAN SPEED

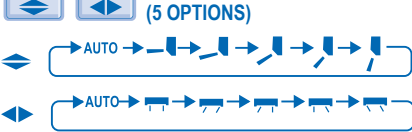
TO SELECT FAN SPEED (5 OPTIONS)



- For AUTO, the indoor fan speed is automatically adjusted according to the operation mode.

AIR SWING

TO ADJUST AIRFLOW DIRECTION (5 OPTIONS)



- Keeps the room ventilated.
- If AUTO is set, the louvers swing left/right and up/down automatically.
- In heat mode, the air blows horizontally for a while, then starts to blow downwards and the airflow louvers start to swing left/right after the temperature rises.

PATROL

TO MONITOR AIR QUALITY

- Patrol sensor detects air quality.
- When air quality is unsatisfactory, e-ion operation will start automatically.

e-ion

TO ENJOY CLEAN AIR

- This operation produces negative ions to attract dust which will then be captured at the positively charged e-ion filters.

QUIET

TO ENJOY QUIET ENVIRONMENT

- This operation reduces indoor and outdoor units noise.

POWERFUL

TO ACHIEVE TEMPERATURE QUICKLY

- This operation will stop automatically after 20 minutes.

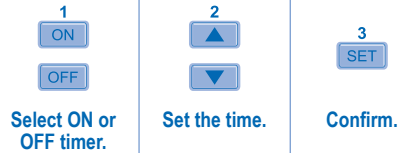
- **PATROL**, **e-ion**, **QUIET** and **POWERFUL** can be activated in all modes and can be cancelled by pressing the respective button again.

- **PATROL** and **e-ion** or **QUIET** and **POWERFUL** can not be activated at the same time.

- **PATROL** and **e-ion** can be activated even when the unit is turned off. In this condition, once e-ion indicator is ON, the unit will operate with AUTO fan speed and air swing.

TO SET THE TIMER

- To turn ON or OFF the unit at a preset time.



- To cancel ON or OFF timer, press **ON** or **OFF** then press **CANCEL**.
- When ON Timer is set, the unit may start earlier (up to 30 minutes) before the actual set time in order to achieve the desired temperature on time.
- Timer operation is based on the clock set in the remote control and repeats daily once set. For clock setting, please refer to Remote Control Preparation at back cover.
- If timer is cancelled manually or due to power failure, you can restore the previous setting (once power is resumed) by pressing **SET**.

OPTIONAL SETTINGS

PATROL Patrol starts automatically with the unit switched on with **OFF/ON**.

Press and hold for 5 seconds, then release to disable or restore this setting.

▲ Press and hold for 5 seconds to dim or restore the unit's indicator brightness.

▼ Press and hold for approximately 10 seconds to show temperature setting in °C or °F.

CLOCK Press and hold for approximately 5 seconds to show 12-hour (am/pm) or 24-hour time indication.

RC RESET Press to restore the remote control's default setting.

AC SET Not used in normal operations.

Set the temperature 1°C higher in cool mode or 2°C lower in heat mode than the desired temperature to achieve a 10% power saving.

Use curtains to screen off sunlight and outdoor heat to reduce power consumption during cool mode.

CARE & CLEANING



- Switch off the power supply before cleaning.
- Do not touch the aluminium fin, sharp part may cause injury.

CAUTION

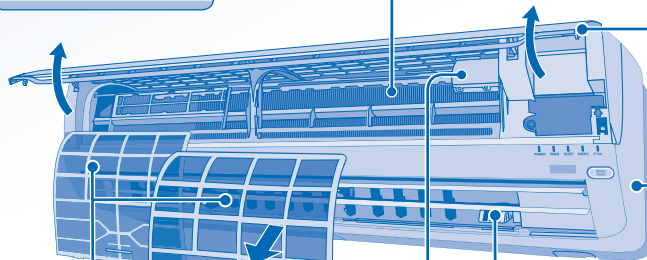
WASHING INSTRUCTIONS

- Do not use benzene, thinner or scouring powder.
- Use only soap (\approx pH7) or neutral household detergent.
- Do not use water hotter than 40°C.

HINTS

- Clean the filter regularly for best performance and to reduce power consumption.
- Please consult your nearest dealer for seasonal inspection.

ALUMINIUM FIN



FRONT PANEL

Raise and pull to remove. Wash gently and dry.

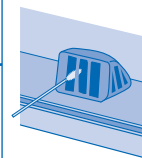
INDOOR UNIT

Wipe the unit gently with a soft, dry cloth.

e-ion FILTERS

- Clean the filters regularly.
- Wash/rinse the filters gently with water to avoid damage to the filter surface.
- Dry the filters thoroughly under the shade, away from fire or direct sunlight.
- Replace any damage filter.

ACTIVE e-ion GENERATOR



- Clean with dry cotton bud.
- Active e-ion generator cleaning is recommended every 6 months.

ACTIVE e-ion POWER MODULE

FOR SEASONAL INSPECTION AFTER EXTENDED NON-USE

- Checking of remote control batteries.
- No obstruction at air inlet and air outlet vents.
- After 15 minutes of operation, it is normal to have the following temperature difference between air inlet and air outlet vents:
Cooling: $\geq 8^{\circ}\text{C}$ Heating: $\geq 14^{\circ}\text{C}$

FOR EXTENDED NON-USE

- Activate heat mode for 2~3 hours to thoroughly dry the unit.
- Turn off the power supply.
- Remove the remote control batteries.

NON SERVICEABLE CRITERIAS

TURN OFF POWER SUPPLY then CALL Authorized Distributor under the following conditions:

- Abnormal noise during operation.
- Water/foreign particles have entered the remote control.
- Water leaks from Indoor unit.
- Circuit breaker switches off frequently.
- Power cord becomes unnaturally warm.
- Switches or buttons are not functioning properly.

TROUBLESHOOTING

The following symptoms do not indicate malfunction.

Symptom	Cause
Mist emerges from indoor unit.	<ul style="list-style-type: none"> • Condensation effect due to cooling process.
Water flowing sound during operation.	<ul style="list-style-type: none"> • Refrigerant flow inside the unit.
The room has a peculiar odour.	<ul style="list-style-type: none"> • This may due to damp smell emitted by the wall, carpet, furniture or clothing.
Indoor fan stops occasionally during automatic fan speed setting.	<ul style="list-style-type: none"> • This helps to remove the surrounding odours.
Operation is delayed a few minutes after restart.	<ul style="list-style-type: none"> • The delay is a protection to the unit's compressor.
Outdoor unit emits water/steam.	<ul style="list-style-type: none"> • Condensation or evaporation occurs on pipes.
Timer indicator is always on.	<ul style="list-style-type: none"> • The timer setting repeats daily once set.
Power indicator blinks during operation and the indoor fan is stopped.	<ul style="list-style-type: none"> • The unit is in defrost mode, and the melted frost is drained from the outdoor unit.
Indoor fan stops occasionally during heating operation.	<ul style="list-style-type: none"> • To avoid unintended cooling effect.
Power indicator blinks before the unit is switched on.	<ul style="list-style-type: none"> • This is a preliminary step in preparation for the operation when the ON timer has been set.
Cracking sound during operation.	<ul style="list-style-type: none"> • Changes of temperature cause the expansion/contraction of the unit.

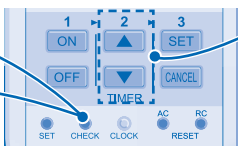
Check the following before calling for servicing.

Symptom	Check
Heating/Cooling operation is not working efficiently.	<ul style="list-style-type: none"> • Set the temperature correctly. • Close all doors and windows. • Clean or replace the filters. • Clear any obstruction at the air inlet and air outlet vents.
Noisy during operation.	<ul style="list-style-type: none"> • Check if the unit has been installed at an incline. • Close the front panel properly.
Remote control does not work. (Display is dim or transmission signal is weak.)	<ul style="list-style-type: none"> • Insert the batteries correctly. • Replace weak batteries.
The unit does not work.	<ul style="list-style-type: none"> • Check if the circuit breaker is tripped. • Check if timers have been set.
The unit does not receive the signal from the remote control.	<ul style="list-style-type: none"> • Make sure the receiver not obstructed. • Certain fluorescent lights may interfere with signal transmitter. Please consult your nearest dealer.
Patrol sensor or e-ion indicator on the indoor unit is blinking.	<ul style="list-style-type: none"> • Press PATROL or e-ion twice. If the patrol sensor or e-ion indicator still blinking, please consult your nearest dealer.

The unit stops and the timer indicator blinks.

1 Press for 5 seconds.

3 Press for 5 seconds to quit checking.



2 Press until you hear beep sound, then jot down the error code.

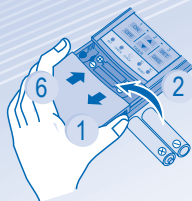
- Turn the unit off and reveal the error code to your nearest dealer.

NOTE :

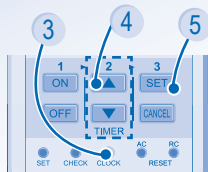
- The unit may be operable (with 4 beeps) on a limited basis, depending on the error.

QUICK GUIDE

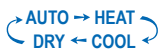
Remote Control Preparation



- 1 Press and pull out
- 2 Insert AAA or R03 batteries (can be used ~ 1 year)
- 3 Press CLOCK
- 4 Set time
- 5 Confirm
- 6 Close the cover



1 MODE



Select the desired mode.

2



Start/stop the operation.

3



Set the desired temperature.

Matsushita Electric Industrial Co., Ltd.

Web Site: <http://www.panasonic.co.jp/global/>