

## Basic Operating Instructions

### Blu-ray Disc™ Player

Model No. DMP-BDT370



### Firmware updates

Panasonic is constantly improving the unit's firmware to ensure that our customers are enjoying the latest technology. Panasonic recommends updating your firmware as soon as you are notified.

Model number suffix "EB" denotes UK model.

EB GN GA

SQT0753-1  
F1214WY1025

Thank you for purchasing this product. Please read these instructions carefully before using this product, and save this manual for future use.

A more detailed operating instruction is available in "Operating Instructions (PDF format)". To read it, download it from the website. <http://av.jpn.support.panasonic.com/support/global/cs/bd/oi/index.html>



You will need Adobe Reader to browse or print the Operating Instructions (PDF format). You can download and install a version of Adobe Reader that you can use with your OS from the following website. (As of December 2014) <http://www.adobe.com/products/acrobat/readstep2.html>

## Accessories

Check the supplied accessories before using this unit.

### 1 Remote control

**For the United Kingdom and Ireland**

**For Australia and New Zealand**

(N2QAYB001031)

**For the South East Asia**

(N2QAYB000959)

### 2 Batteries for remote control

#### 1 AC mains lead

**For the United Kingdom and Ireland**

(K2CT2CA00007)

**For Australia and New Zealand**

(K2CJ2DA00014)

**For the South East Asia**

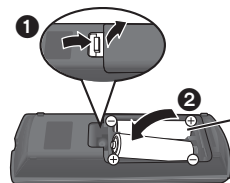
See "STEP 1: Connecting to a TV" for more information.

**Except the United Kingdom and Ireland**

#### 1 HDMI Cable

- Product numbers are provided in these operating instructions correct as of December 2014. These may be subject to change.
- Do not use AC mains lead with other equipment.

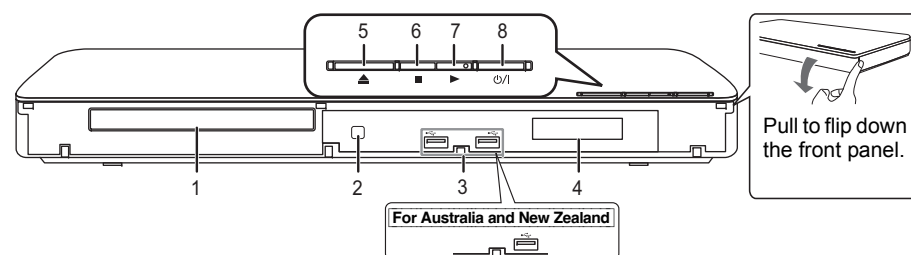
### Using the remote control



R6/LR6, AA  
(Alkaline or manganese batteries)

– Insert the batteries to the terminal so that it (+ and –) matches those in the remote control.

- Turn the unit on and off
- TV operation buttons  
You can operate the Panasonic TV using this unit's remote control. Some buttons may not work depending on the TV.  
[TV] : Turn the TV on and off  
[AV] : Change input  
[+ VOL] : Adjust the volume
- Select title numbers, etc./Enter numbers or characters
- Cancel
- Change soundtrack
- Basic playback control buttons
- For the United Kingdom and Ireland**  
**For Australia and New Zealand**  
Show Pop-up menu  
**For the South East Asia**  
Show USB Sharing menu
- Show Top menu
- Show Option menu
- Coloured buttons (red, green, yellow, blue)  
Used for various purposes depending on the display.
- Transmit the remote control signal
- Open or close the disc tray
- Show the status messages
- Show Miracast™ screen
- Show the Home Screen of Network Service
- Exit the Menu screen
- For the United Kingdom and Ireland**  
**For Australia and New Zealand**  
Show Netflix screen  
**For the South East Asia**  
Show Pop-up menu
- Show HOME menu
- [▲, ▼, ◀, ▶] : Move the highlight for selection  
[OK] : Confirm the selection  
[II] : Frame-by-frame
- Return to previous screen

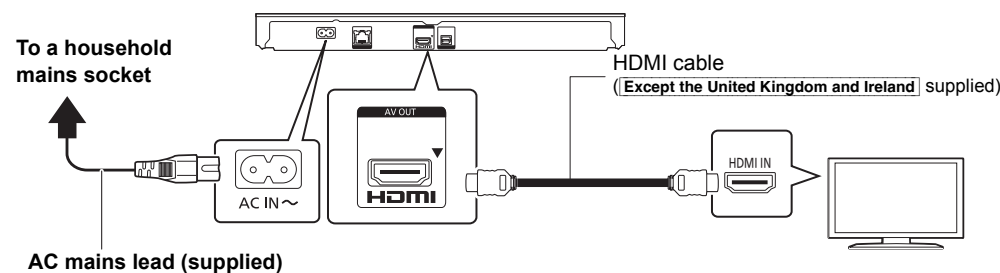


Pull to flip down the front panel.

- Disc tray
- Remote control signal sensor  
Distance: Within approx. 7 m  
Angle: Approx. 20° up and down, 30° left and right
- USB ports
- Display
- Open or close the disc tray
- Stop
- Start play
- Standby/on switch (TV)**  
Press to switch the unit from on to standby mode or vice versa. In standby mode, the unit still consumes a small amount of power.

## Quick Start Guide

### STEP 1 : Connecting to a TV



**For the South East Asia**  
2 AC mains leads are supplied.  
Thailand: With a label

- This unit consumes a small amount of AC power (⇒ "Specifications") even when turned off in standby mode. For the purpose of energy conservation, the unit should be disconnected if you will not be using it for extended period of time.

### Caution for AC Mains Lead

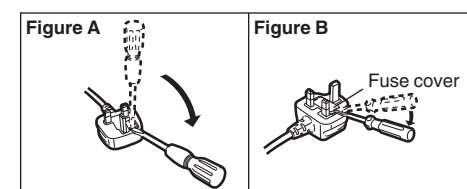
**(For the AC mains plug of three pins)**

For your safety, please read the following text carefully. This appliance is supplied with a moulded three pin mains plug for your safety and convenience. A 5-ampere fuse is fitted in this plug. Should the fuse need to be replaced please ensure that the replacement fuse has a rating of 5-ampere and that it is approved by ASTA or BSI to BS1362. Check for the ASTA mark or the BSI mark on the body of the fuse. If the plug contains a removable fuse cover you must ensure that it is refitted when the fuse is replaced. If you lose the fuse cover the plug must not be used until a replacement cover is obtained. A replacement fuse cover can be purchased from your local dealer.

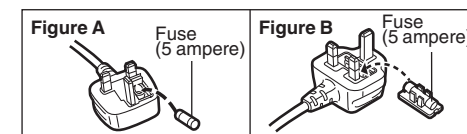
**Before use**  
Remove the connector cover.

**How to replace the fuse**  
The location of the fuse differ according to the type of AC mains plug (figures A and B). Confirm the AC mains plug fitted and follow the instructions below. Illustrations may differ from actual AC mains plug.

1. Open the fuse cover with a screwdriver.

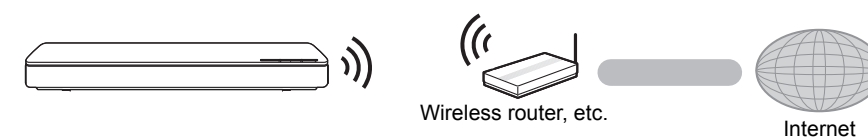


2. Replace the fuse and close or attach the fuse cover.

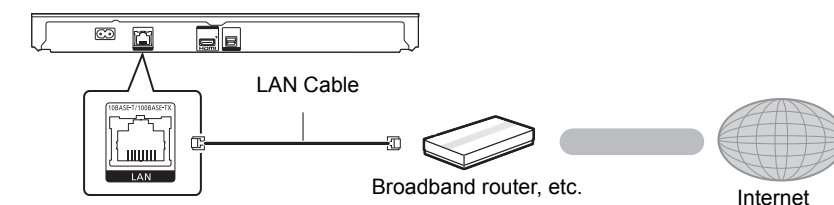


## STEP 2 : Connecting to the network

### ■ Wireless LAN connection

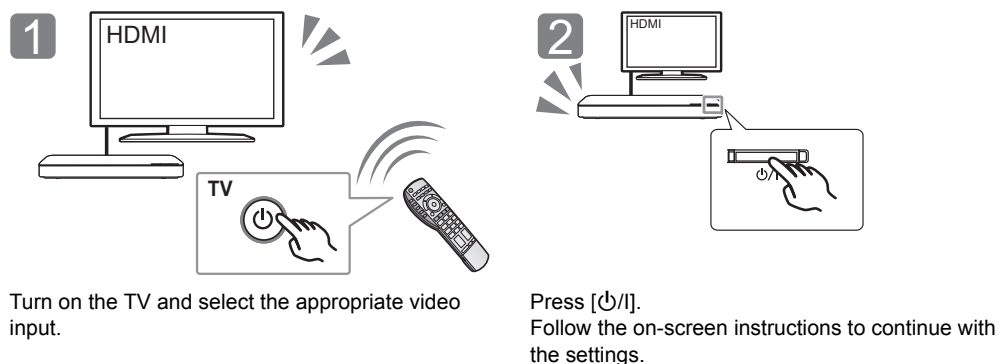


### ■ LAN cable connection



Use category 5 or above straight LAN cables (STP) when connecting to peripheral devices.

## STEP 3 : Settings

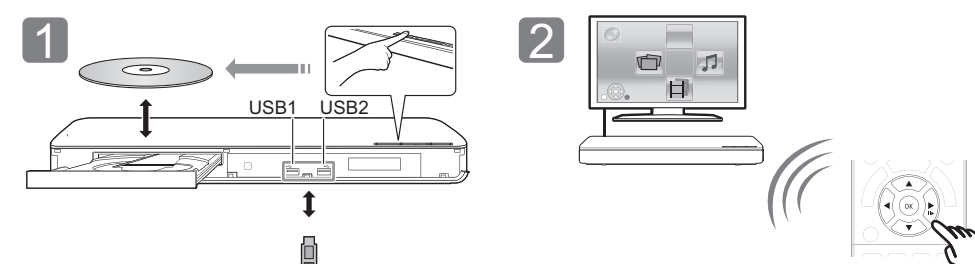


Turn on the TV and select the appropriate video input.

Press [TV]. Follow the on-screen instructions to continue with the settings.

## STEP 4 : Playback

e.g., **For the United Kingdom and Ireland**



Insert the media.

Press [OK] or [▲, ▼, ◀, ▶] to select the item.  
• If there are any other items, repeat this step.

### Operating during playback

Following functions may not work depending on the media and contents.

Function	Operation	Notes
Stop	Press [STOP].	The stopping point is memorized. <b>Resume play function</b> Press [PLAY] to restart from this point. • The point is cleared if the media is removed.
Pause	Press [PAUSE].	Press [PAUSE] again or [PLAY] to restart play.
Search	While playing, press [SEARCH ◀] or [SEARCH ▶].	The speed increases up to 5 steps. • Press [PLAY] to revert to normal playback speed.
Slow motion	While paused, press [SEARCH ▶].	
Skip	While playing or paused, press [◀] or [▶].	Skip to the title, chapter or track.

### Playable media

**BD-Video:** Video  
**BD-RE:** Video, JPEG, MPO, AAC, ALAC, DSD, FLAC, MP3, WAV, WMA  
**BD-R:** Video, MKV, RMVB\*, Xvid, AAC, ALAC, DSD, FLAC, MP3, WAV, WMA  
**DVD-Video:** Video  
**DVD-R/DVD-R DL :** Video, AVCHD, MKV, RMVB\*, Xvid, JPEG, MPO, AAC, ALAC, DSD, FLAC, MP3, WAV, WMA  
**DVD-RW/+R/+RW/+R DL :** Video, AVCHD  
**Music CD :** Music [CD-DA]  
**CD-R/CD-RW :** MKV, RMVB\*, Xvid, JPEG, MPO, AAC, ALAC, FLAC, MP3, Music [CD-DA], WAV, WMA  
**USB devices (up to 4 TB) :** MKV, MP4, MPEG2, RMVB\*, Xvid, JPEG, MPO, AAC, ALAC, DSD, FLAC, MP3, WAV, WMA

### ■ Region management information

The unit can play back BD-Video/DVD-Video discs of the following regions codes, including "ALL":  
Example: BD-Video DVD-Video

**For the United Kingdom and Ireland**



**For Australia and New Zealand**



**For the South East Asia**

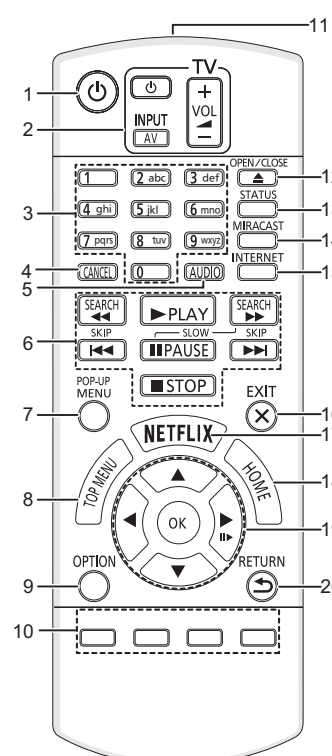


\* **For the South East Asia** only

## Control reference guide

When other Panasonic devices respond to the remote control of the unit, change the remote control code.

**For the United Kingdom and Ireland**  
**For Australia and New Zealand**



**For the South East Asia**

