

Operating Instructions

AAC WMA MP3 CD Player/Receiver
Model: **CQ-RX420W**

WMA MP3 CD Player/Receiver
Model: **CQ-RX320W/CQ-RX321W/CQ-RX322W/CQ-RX220W/CQ-RX221W/CQ-RX225W**



- Please read these instructions carefully before using this product and keep this manual for future reference.
- All illustrations throughout this manual represent model CQ-RX420W unless otherwise specified.

Accessories	
Instruction kit	Q'ty
Operating Instructions (English: YGF286163) (Pycckck: YGF286164) *Not supplied with CQ-RX225W.	1 set
System Upgrade Guidebook (YGF2862951) Operating Instructions USB (YGF2862951) Operating Instructions (YGF2862951)	1
Installation Instructions (YGF2862951)	1
Installation kit (YEP0FZ5698)	Q'ty
Lock Cancel Plate	1
Mounting Bolt (5 mm φ)	1 set
Rubber Bushing	1 set

- Notes:**
- The number in parentheses underneath each accessory part name is the part number for maintenance and service.
 - Accessories and their part numbers are subject to modification without prior notice due to improvements.
 - Mounting Collar and Trim Plate are mounted on the main unit at shipment.

Specifications

General	
Power supply	• DC 12 V (11 V – 16 V DC), test voltage 14.4 V, negative ground
Current consumption	• Less than 2.1 A
Maximum power output	• 50 W x 4 channels (at 1 kHz), volume control maximum
Power output	• 15 W x 4 CH (1 kHz, 1%, 4 Ω)
Tone/SQ adjustment range	• SQ Low/Bass: +12 dB (at 60 Hz, 80 Hz, 100 Hz, 200 Hz)
	• SQ Mid: +12 dB (at 500 Hz, 1 kHz, 2 kHz, 3 kHz)
	• SQ High/Treble: +12 dB (at 10 kHz, 12 kHz, 15 kHz, 18 kHz)
Speaker impedance	• 4 – 8 Ω
CQ-RX420W CQ-RX320W CQ-RX321W CQ-RX322W CQ-RX220W CQ-RX221W CQ-RX225W	CQ-RX420W CQ-RX320W CQ-RX321W CQ-RX322W CQ-RX220W CQ-RX221W CQ-RX225W
Pre-amp output voltage	• 2.0 V (CD mode, 1 kHz, 0 dB)
Pre-amp output impedance	• 200 Ω
CQ-RX420W CQ-RX320W CQ-RX321W CQ-RX322W	CQ-RX420W CQ-RX320W CQ-RX321W CQ-RX322W
USB Connector	• USB Standard Compatibility: 1.1/2.0 Full Speed
Maximum Supply Current	• 500 mA
Front AUX input	• 10 kΩ
Allowable external input	• 2.0 V
Connector	• 3.5 mm φ Stereo mini-pin
Dimensions (W x H x D)	• 178 x 50 x 160 mm
Weight	• 1.2 kg
Disc Player	
Sampling frequency	• 8 times oversampling
DA converter	• 1 bit DAC System
Pick-up type	• Astigmia 3-beam
Light source	• Semiconductor laser
Wave length	• 780 nm
Frequency response	• 20 Hz – 20 kHz (±1 dB)
Signal to noise ratio	• -96 dB
Total harmonic distortion	• <0.01 % (1 kHz)
Wow and flutter	• Below measurable limits
Channel separation	• -85 dB
Notes:	
• Remote Control Unit for CQ-RX220W/CQ-RX221W/CQ-RX222W/CQ-RX121W/CQ-RX122W is option (CA-RC80N).	
• The optional remote control is available from your local dealer. (CA-RC80N)	

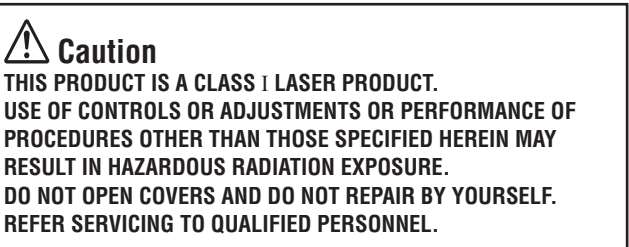
Safety information

- Read the operating instructions for the unit and all other components of your car audio system carefully before using the system. They contain instructions about how to use the system in a safe and effective manner. Panasonic assumes no responsibility for any problems resulting from failure to observe the instructions given in this manual.
- This manual uses pictographs to show you how to use the product safely and to alert you to potential dangers resulting from improper connections and operations. The meanings of the pictographs are explained below. It is important that you fully understand the meanings of the pictographs in order to use this manual and the system properly.



Warning

- Observe the following warnings when installing. Disconnect the lead from the negative (-) battery terminal before installation. Wiring and installation with the negative (-) battery terminal removed may cause electrical shock and injury due to a short circuit. Some cars equipped with the electrical safety system have specific procedures of battery terminal disconnection. **FAILURE TO FOLLOW THE PROCEDURE MAY LEAD TO THE UNINTENDED ACTIVATION OF THE ELECTRICAL SAFETY SYSTEM RESULTING IN DAMAGE TO THE VEHICLE AND PERSONAL INJURY OR DEATH.**
- Use the proper power supply. This product is designed for operation with a negative grounded 12 V DC battery system. Never operate this product with other battery systems, especially a 24 V DC battery system.
- Keep batteries and insulation film out of reach of infants. Batteries and insulation film can be ingested, so keep them out of the reach of infants. If an infant ingests a battery or insulation film, please seek immediate medical attention.
- Protect the Deck Mechanism. Do not insert any foreign objects into the slot of this unit.
- Do not disassemble or modify the unit. Do not disassemble, modify the unit or attempt to repair the product yourself. If the product needs to be repaired, consult your dealer or an authorized Panasonic Service Center.
- Do not use the unit when it is out of order. If the unit is out of order (no power, no sound or in an abnormal state (has foreign objects in it, is exposed to water, is smoking, or smells), turn it off immediately and consult your dealer.
- The remote control unit should not lie about in the car. If the remote control unit lies about, it could fall on the floor while driving, get wedged under the brake pedal, and lead to a traffic accident.
- Refer fuse replacement to qualified service personnel. When the fuse blows out, eliminate the cause and have it replaced with the fuse prescribed for this unit by a qualified service engineer. Incorrect replacement of the fuse may lead to smoke, fire, and damage to the product.



Features

- SQ (Sound Quality) You have 6 preset modes (FLAT, ROCK, POP, VOCAL, JAZZ, CLUB). You can customize your settings for these and save them for instant recall. **SQS (3-Band Sound Quality)** Center frequency and level are adjustable in each of 3 bands. This lets you fine-tune sound quality for each genre to suit car-interior acoustics and your personal preferences. (→ "Sound Control")
- USB Connector **CQ-RX420W** The USB Connector is equipped on the front panel. (→ System Upgrade Guidebook) **CQ-RX320W** **CQ-RX321W** **CQ-RX322W** The USB Connector is equipped on the front panel. (→ Operating Instructions USB) By connecting a USB memory (not included) to USB connector via a USB extension cable (USB 2.0, not included), you can enjoy MP3/WMA/AAC files (CQ-RX420W), MP3/WMA files (CQ-RX320W, CQ-RX321W, CQ-RX322W) stored on the USB memory (not included) in your car.
- Expansion Module (Hub Unit) **CQ-RX420W** The USB Connector is equipped on the front panel. (→ System Upgrade Guidebook) **CQ-RX320W** **CQ-RX321W** **CQ-RX322W** The USB Connector is equipped on the front panel. (→ Operating Instructions USB) By connecting a USB memory (not included) to USB connector via a USB extension cable (USB 2.0, not included), you can enjoy music files stored on the iPod series in your car.
- Wide Array of Components for System Upgrade **CQ-RX420W** Various optional components allow users to obtain availability of wide range of system upgrade. Upgrading the system delivers relaxed AV space in a car. For further information, refer to the separate System Upgrade Guidebook.
- iPod The optional adaptor (Direct Cable for iPod: CA-DC300N) allows you to connect the optional iPod series. iPod is a trademark of Apple Inc., registered in the U.S. and other countries.
- CD Changer The optional adaptor (Conversion Cable for DVD/CD Changer: CA-CC30N) allows you to connect the optional Panasonic CD changer unit (CX-DP880N).
- Bluetooth® The optional Bluetooth unit (CY-BT200N) and a Bluetooth device enables hands-free telephony and Bluetooth Audio listening with your mobile phone. **Note:** This unit does not support CY-BT100N.
- AUX (AUX1) Input Terminal The AUX input terminal is equipped on the front panel. Your mobile audio player and other devices are connectable to this unit without any difficulty.

Notes on MP3/WMA/AAC

Playable Audio File	
CQ-RX420W CQ-RX320W CQ-RX321W CQ-RX322W CQ-RX220W CQ-RX221W CQ-RX225W	MP3/WMA/AAC MP3/WMA/AAC MP3/WMA/AAC MP3/WMA/AAC MP3/WMA/AAC MP3/WMA/AAC MP3/WMA/AAC
Notes:	
• It is recommended to set the bit rate to "128 kbps or more" and "fixed".	
• The formats and extensions for AAC data vary according to the encoder software used.	
• AAC files which can be played on this unit have the ".m4a" extension and were encoded with Apple iTunes® version 7.	
• The file extension for files encoded with the iTunes Apple Lossless Encoder is ".m4a", but such files cannot be played on this player.	
• Files under copyright protection cannot be played.	
Notes for AAC playback is only for the model CQ-RX420W.	
What is MP3/WMA/AAC?	
MP3 (MPEG Audio Layer-3) and WMA (Windows Media™ Audio) are the compression formats of digital audio. The former is developed by MPEG (Motion Picture Experts Group), and the latter is developed by Microsoft Corporation. Using these compression formats, you can record the contents of about 10 music CDs on a single CD media (This figures refer to data recorded on a 650 MB CD-R or CD-RW at a fixed bit rate of 128 kbps and a sampling frequency of 44.1 kHz).	
Notes: MP3/WMA/AAC encoding and writing software is not supplied with this unit.	
Points to Remember When Making MP3/WMA/AAC Files	
Common	
• High bit rate and high sampling frequency are recommended for high quality sounds.	
• Selecting VBR (Variable Bit Rate) is not recommended because playing time is not displayed properly and sound may be skipped.	
• The playback sound quality differs depending on the encoding circumstances. For details, refer to the instructions of your own encoding software and writing software.	
MP3	
• It is recommended to set the bit rate to "128 kbps or more" and "fixed".	
WMA	
• It is recommended to set the bit rate to "64 kbps or more" and "fixed".	
• Do not set the copy protected attribute on the WMA file to enable this unit to play back.	

Before Reading These Instructions

Panasonic welcomes you to our constantly growing family of electronic products owners. We endeavor to give you the advantages of precise electronic and mechanical engineering, manufactured with carefully selected components, and assembled by people who are proud of the reputation their work has built for our company. We know this product will bring you many hours of enjoyment, and after you discover the quality, value and reliability we have built into it, you too will be proud to be a member of our family.

The instruction manual consists of 2 books. One is "Operating Instructions" describing the operations of the main unit. The other is "System Upgrade Guidebook" describing the optional devices such as CD changer. (CQ-RX420W) The other is "Operating Instructions USB" describing the USB connector on the front panel. (CQ-RX320W, CQ-RX321W, CQ-RX322W)

Differences Among 10 Models

This operating instruction manual is for 10 models CQ-RX420W, CQ-RX320W, CQ-RX321W, CQ-RX322W, CQ-RX220W, CQ-RX221W, CQ-RX225W, CQ-RX121W and CQ-RX122W. All illustrations throughout this manual represent model CQ-RX420W unless otherwise specified. The following table describes the differences among 10 models.

Features	Models	CQ-RX420W	CQ-RX320W	CQ-RX321W	CQ-RX322W	CQ-RX220W
Removable Face Plate Case	Included	Included	Included	Included	Included	Not included
Remote Control Unit	Included	Included	Included	Included	Included	Not included
System Upgrade Guidebook	Included	Included	Included	Included	Included	Not included
Operating Instructions USB	Not included	Included	Included	Included	Included	Not included
System-up Connector	Supported	Not Supported	Not Supported	Not Supported	Not Supported	Not Supported
Preamp Out Connector	2 (Front/Rear)	1 (Rear)	1 (Rear)	1 (Rear)	1 (Rear)	1 (Rear)
USB Connector	Supported (USB iPod)	Supported	Supported	Supported	Supported	Not Supported
AAC playback	Supported	Not Supported	Not Supported	Not Supported	Not Supported	Not Supported
RDS	Supported	Supported	Not Supported	Not Supported	Not Supported	Supported
Button logo color	Blue	Blue	Red	Green	Blue	Blue

Features	Models	CQ-RX221W	CQ-RX222W	CQ-RX225W	CQ-RX121W	CQ-RX122W
Removable Face Plate Case	Not included	Not included	Included	Not included	Not included	Not included
Remote Control Unit	Not included	Not included	Included	Not included	Not included	Not included
System Upgrade Guidebook	Not included	Not included	Included	Not included	Not included	Not included
Operating Instructions USB	Not included	Not included	Included	Not included	Not included	Not included
System-up Connector	Not Supported	Not Supported	Not Supported	Not Supported	Not Supported	Not Supported
Preamp Out Connector	1 (Rear)	1 (Rear)	1 (Rear)	Not Supported	Not Supported	Not Supported
USB Connector	Not Supported	Not Supported	Not Supported	Not Supported	Not Supported	Not Supported
AAC playback	Not Supported	Not Supported	Not Supported	Not Supported	Not Supported	Not Supported
RDS	Not Supported	Not Supported	Not Supported	Not Supported	Not Supported	Not Supported
Button logo color	Red	Green	Green	Red	Green	Green

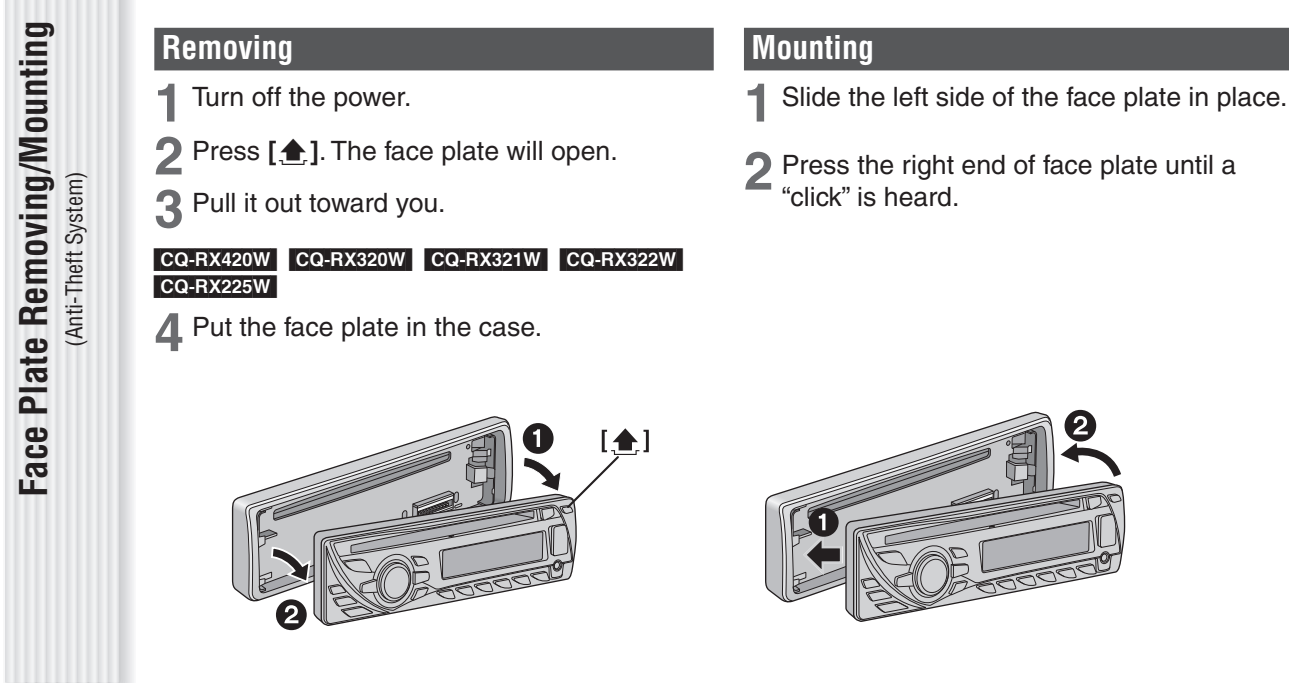
Bluetooth® The Bluetooth word mark and logo are owned by the Bluetooth SIG, Inc. and any use of such marks by Panasonic Corporation is under license. Other trademarks and trade name are those of their respective owners.

Maintenance/Fuse

- Your product is designed and manufactured to ensure the minimum of maintenance. Use a dry, soft cloth for routine exterior cleaning. Never use benzine, thinner, or other solvents.
- If the fuse blows out, consult your dealer, or your nearest authorized Panasonic Service Center.

Anti-Theft System

- Notes: Do not touch the contacts on the face plate and the main unit, since this may result in poor electrical contact. If dirt or other foreign substances get on the contacts, wipe them off with a clean and dry cloth.



Notes on Discs

- If you use commercial CDs, they must have either of these labels shown at right. Some copy-protected music CDs are not playable.
- How to hold the disc: Do not touch the underside of the disc. Do not scratch on the disc. Do not bend the disc. When not in use, keep disc in the case.
- Printed side: Do not use discs that fit any of the descriptions given below. Using these discs may damage the disc or cause the unit to malfunction. Special discs in a shape which is not round.
- Discs with adhered labels, etc. on them.
- Discs with cracks, scratches or parts missing.
- Discs with burrs. Please remove the burrs before use.
- Do not leave discs in the following places: Direct sunlight, Near car heaters, Dirty, dusty and damp areas, On seats and dashboards.
- Disc cleaning: Use a dry, soft cloth to wipe from the center outward.
- Do not attach any seals or labels to your discs. Do not write on the disc label in a heavy pen or ballpoint pen.
- Notes on CD-Rs/RWs: You may have trouble playing back some CD-R/RW discs recorded using CD recorders (CD-R/RW drives), either due to their recording characteristics or dirt, fingerprints, scratches, etc. on the disc surface. CD-R/RW discs are less resistant to high temperatures and high humidity than ordinary music CD. Leaving them inside a car for extended periods may damage and make playback impossible. The unit may not successfully playback a CD-R/RW, that was made by the combination of writing software, a CD recorder (CD-R/RW drive) and a disc if they are incompatible with one another. This player cannot play the CD-R/RW discs if the session is not closed. Be sure to observe the handling instructions of CD-R/RW discs. This player cannot play CD-R/RW discs which contain other than CD-DA or MP3/WMA/AAC data (Video CD, etc.).

Troubleshooting

If You Suspect Something Wrong	
Check and take steps as described below. If the described suggestions do not solve the problem, it is recommended to take the unit to your nearest authorized Panasonic Service Center. The product should be serviced only by qualified personnel. Please refer the checking and the repair to professionals. Panasonic cannot be liable for any accidents arising out of neglect of checking the unit or your own repair after your checking. Never take measures especially those other than indicated by <i>italic</i> letters in "Possible Solution" described below because those are too dangerous for users to handle themselves.	
Trouble	Possible Solution
Common	
Frequent noise	• Tune in to another station of high-intensity waves. • Make sure that the antenna mounted point is grounded properly.
Presets data deleted	• The preset memory is cleared to return to the original factory setting when the power connector or battery is disconnected.
Error Display Messages (Disc Player)	
	(The disc is ejected automatically.) The disc is dirty or upside down.
	(The disc is ejected automatically.) The disc has scratches. • Check the disc.
	No operation by some cause. • If normal operation is not restored, consult your dealer or the nearest Service Center to ask for repairs.
	Cannot read the file. • Check the disc.
	A WMA/AAC file can be copyrighted. The file is protected by copyright is not playable.
CQ-RX420W Notes: Refer to the System Upgrade Guidebook for error messages regarding optional products. CQ-RX320W CQ-RX321W CQ-RX322W Notes: Refer to the Operating Instructions USB for error messages regarding optional products.	

Copyright It is prohibited by copyright laws to copy, distribute and deliver copyrighted materials such as music without the approval of copyright holder except enjoying yourself personally.

No warranty Above description complies with our investigations as of June 2008. It has no warranty for reproducibility and displayability of MP3/WMA/AAC.

* WMA 9 Professional/LossLess/Voice are not supported.

