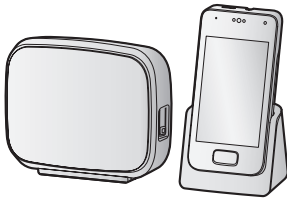


Panasonic®

Quick Guide


Premium Design Phone with Touchscreen

Model No. **KX-PRX150AZ**



Thank you for purchasing a Panasonic product.

Please read this document before using the unit and save it for future reference.

For detailed information about the features of your phone system, refer to the Operating Instructions, which is available by tapping  in the home screen or by visiting the support page for this product at the address below.
<http://www.panasonic.net/pcc/support/tel/sdect>

To use this unit in your country, first change the unit's region setting to match your country (page 22).

Please access our online customer survey:
<http://panasonic.net/pcc/tel/q>

Introduction

Accessory information

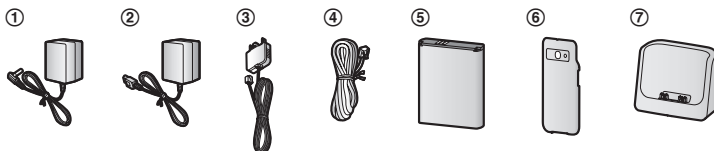
Supplied accessories

No.	Accessory item/Part number	Quantity
①	AC adaptor for base unit/PNLV226AL	1
②	AC adaptor for charger/PNLV230AL	1
③	Telephone line cord (for Australia)*1	1
④	Telephone line cord (for New Zealand)	1
⑤	Rechargeable battery*2	1
⑥	Handset cover*3	1
⑦	Charger	1

*1 The telephone line cord comes connected with the telephone plug.

*2 See page 2 for replacement battery information.

*3 The handset cover comes attached to the handset.



Additional/replacement accessories

Please contact your nearest Panasonic dealer for sales information.

Accessory item	Model number
Rechargeable battery	KX-PRA10EX ● Lithium Ion (Li-Ion) type battery
Headset	RP-TCM120*1
DECT repeater	KX-A405AL
Key finder	KX-TGA20AZ*2

*1 Contact Panasonic or the authorised sales department listed on the back cover for the headset available in your area.

*2 You can register up to 4 optional key finders to your phone system. By registering a key finder to the base unit and then attaching the key finder to an easily misplaced item, such as your house or car keys, you can use your handset to find the item.

For more information, visit the following web site.

<http://panasonic.net/pcc/products/telephone/p/tga20/>

Expanding your phone system

Handset (optional): KX-PRXA15AZ

You can expand your phone system by registering optional handsets (6 max.) to a single base unit.

- Optional handsets may be a different colour from that of the supplied handsets.



Introduction

For your future reference

We recommend keeping a record of the following information to assist with any repair under warranty.

Serial No. (found on the rear of the base unit)	Date of purchase
Name and address of dealer	

Attach your purchase receipt here.

Trademarks

- Google and Android are trademarks of Google Inc.
- The Bluetooth® word mark and logos are owned by the Bluetooth SIG, Inc. and any use of such marks by Panasonic Corporation is under license.
- Wi-Fi® is a registered mark of the Wi-Fi Alliance.
- microSDHC Logo is a trademark of SD-3C, LLC.
- All other trademarks identified herein are the property of their respective owners.

Notice

- The term “apps” is used in this document to refer to programs that are installed on the handset.
- The handset supports microSD and microSDHC memory cards. In this document, the term “microSD card” is used as a generic term for any of the supported cards.
- The illustrations and screenshots shown in this document are for reference only and may differ from the appearance of the actual product.
- The suffix is omitted from model numbers listed in this document.
- Information in this document is subject to change without notice.

Important Information

For your safety

To prevent severe injury and loss of life/property, read this section carefully before using the product to ensure proper and safe operation of your product.

WARNING

Power connection

- Use only the power source marked on the product.
- Do not overload power outlets and extension cords. This can result in the risk of fire or electric shock.
- Completely insert the AC adaptor/power plug into the power outlet. Failure to do so may cause electric shock and/or excessive heat resulting in a fire.
- Regularly remove any dust, etc. from the AC adaptor/power plug by pulling it from the power outlet, then wiping with a dry cloth. Accumulated dust may cause an insulation defect from moisture, etc. resulting in a fire.
- Unplug the product from power outlets if it emits smoke, an abnormal smell, or makes an unusual noise. These conditions can cause fire or electric shock. Confirm that smoke has stopped emitting and contact an authorised service centre.
- Unplug from power outlets and never touch the inside of the product if its casing has been broken open.
- Never touch the plug with wet hands. Danger of electric shock exists.
- The AC adaptor should only be used indoors.

Installation

- This product is not water-resistant. To prevent the risk of fire or electrical shock, do not expose the product to rain or any type of moisture.
- Do not place or use this product near automatically controlled devices such as automatic doors and fire alarms. Radio waves emitted from this product may cause

such devices to malfunction resulting in an accident.

- Do not allow the AC adaptor or telephone line cord to be excessively pulled, bent or placed under heavy objects.
- Keep all accessories, including the SIM card and microSD card, out of the reach of children to prevent swallowing.
- It is advised not to use the equipment at a refuelling point. Users are reminded to observe restrictions on the use of radio equipment in fuel depots, chemical plants or where blasting operations are in progress.

Operating safeguards

- Unplug the product from power outlets before cleaning. Do not use liquid or aerosol cleaners.
- Do not disassemble the product.
- Do not spill liquids (detergents, cleansers, etc.) onto the telephone line cord plug, or allow it to become wet at all. This may cause a fire. If the telephone line cord plug becomes wet, immediately pull it from the telephone wall socket, and do not use.
- Do not leave this product near heat sources (such as radiators, cookers, etc.), in direct sunlight, or in a car under blazing sun. It should not be placed in rooms where the temperature is less than 0 °C or greater than 40 °C.
- To prevent possible hearing damage, do not listen at high volume levels for long periods.



- Do not use this product at refuelling points. Observe restrictions on the use of radio equipment in fuel depots, chemical plants or where blasting operations are in progress.
- To avoid damage or malfunction, do not modify the SIM card or microSD card or touch the card's gold-coloured contacts.
- While driving, follow the traffic regulations in your area regarding the use of this product.
- RF signals may affect electronic systems in motor vehicles (such as fuel injection

Important Information

systems, air bag systems, etc.) that have been improperly installed or are inadequately shielded. For more information, consult the manufacturer of your vehicle or its equipment.

- Turn the product off when boarding an aeroplane. Await instructions from flight staff regarding the use of electronic devices before turning the product on, and make sure you turn on the product's aeroplane mode. Using this product in an aircraft may be hazardous to the aircraft's operation and disrupt wireless communication, and may also be illegal.
- This product is capable of producing bright flashing lights, which may cause seizures or blackouts.
- The earpiece of this device may retain metallic items such as pins, care must be taken to avoid serious injury.
- To prevent serious damage to this product, avoid strong impacts and rough handling.
- The screen is made from glass. This glass can break if the product is dropped on a hard surface or receives a substantial impact.
- Do not expose the skin to this product for a long period of time. Using this product with skin exposed to the heat generated by the product or AC adaptor for a long period of time can cause low-temperature burns.
- Although the product features GPS functionality, it cannot be used as navigation equipment for aircraft, vehicles or people, or as a high-accuracy surveying device. We do not take any responsibility for any loss resulting from the use of the GPS function for these purposes, or resulting from inaccurate readings or information caused by external factors such as malfunction, operator error, or power failure (including battery shortage).

Medical

- Consult the manufacturer of any personal medical devices, such as pacemakers or hearing aids, to determine if they are adequately shielded from external RF (radio frequency) energy.

DECT features operate between 1.88 GHz and 1.90 GHz with a peak transmission power of 250 mW.

Wi-Fi features operate between 2.4 GHz and 2.4835 GHz with a peak transmission power of 80 mW.

GSM features operate between 880 MHz and 1.88 GHz with a peak transmission power of 2 W.

W-CDMA features operate between 880 MHz and 2.17 GHz with a peak transmission power of 250 mW.

- Wireless Technology Research (WTR) recommends a minimum separation of 15.3 cm between a wireless device and an implanted medical device such as pacemaker or implanted cardioverter defibrillator to avoid potential interference with the medical device. If you have any reason to suspect that your phone is interfering with a pacemaker or other medical devices, turn off the phone immediately and contact the manufacture of pacemaker or other medical devices.
- Turn off this product when in health care facilities in accordance with any regulations posted in the area. Hospitals or health care facilities may be using equipment that could be sensitive to external RF energy.

CAUTION

Installation and location

- Never install telephone wiring during an electrical storm.
- Never install telephone line sockets in wet locations unless the socket is specifically designed for wet locations.
- Never touch uninsulated telephone wires or terminals unless the telephone line has been disconnected at the network interface.
- Use caution when installing or modifying telephone lines.
- The AC adaptor is used as the main disconnect device. Ensure that the AC outlet is installed near the product and is easily accessible.
- This product is unable to make calls when:
 - the handset battery needs recharging or has failed.
 - there is a power failure.

Important Information

Battery

- Use only the specified battery.
- Do not open or mutilate the battery. Released electrolyte from the battery is corrosive and may cause burns or injury to the eyes or skin. The electrolyte is toxic and may be harmful if swallowed.
- Exercise care when handling the battery. Do not allow conductive materials such as rings, bracelets, or keys to touch the battery, otherwise a short circuit may cause the battery and/or the conductive material to overheat and cause burns.
- Charge the battery in accordance with the instructions and limitations specified in this manual.
- Only use a compatible charger to charge the battery. Do not tamper with the charger. Failure to follow these instructions may cause the battery to swell or explode.
- Do not subject the battery to mechanical shock.
- Keep the battery out of the reach of children.
- Keep the battery clean and dry.
- Wipe the battery terminals with a clean dry cloth if they become dirty.
- Do not continuously charge the battery for a prolonged period of time.
- Remove the battery from the product if the product will not be used for a prolonged period of time.

General notices

- This equipment will be inoperable when mains power fails.
- When a failure occurs which results in the internal parts becoming accessible, disconnect the power supply cord immediately and return this unit to an authorised service centre.
- To minimise the possibility of lightning damage, when you know that a thunderstorm is coming, we recommend that you:
 - Unplug the telephone line cord from the phone socket.
 - Unplug the AC adaptor from the AC power outlet.

- No landline calls, including “000” calls (for Australia) and “111” calls (for New Zealand), can be made from this device during a mains power failure.

For New Zealand

- Disconnect the telecom connection before disconnecting the power connection prior to relocating the equipment, and reconnect the power first.
- This equipment shall not be set to make automatic calls to the Telecom “111” Emergency Service.
- The unit’s answering system only responds to Distinctive Alert cadence(s) DA1 and DA3.
- Not all telephones will respond to incoming ringing when connected to the extension socket.
- This equipment may not provide for the effective hand-over of a call to another device connected to the same line.
- The grant of a Telepermit for any item of terminal equipment indicates only that Telecom has accepted that the item complies with minimum conditions for connection to its network. It indicates no endorsement of the product by Telecom, nor does it provide any sort of warranty. Above all, it provides no assurance that any item will work correctly in all respects with another item of Telepermitted equipment of a different make or model, nor does it imply that any product is compatible with all of Telecom’s network services.

Important safety instructions

When using your product, basic safety precautions should always be followed to reduce the risk of fire, electric shock, and injury to persons, including the following:

1. Do not use this product near water for example, near a bathtub, washbowl, kitchen sink, or laundry tub, in a wet basement or near a swimming pool.
2. Avoid using a telephone (including a cordless type) during an electrical storm. There may be a remote risk of electric shock from lightning.

Important Information

3. Do not use the telephone to report a gas leak in the vicinity of the leak.
4. Use only the power cord and batteries indicated in this manual. Do not dispose of batteries in a fire. They may explode. Check with local codes for possible special disposal instructions.

SAVE THESE INSTRUCTIONS

For best performance

Base unit location/avoiding noise

The base unit and other compatible Panasonic units use radio waves to communicate with each other.

- For maximum coverage and noise-free communications, place your base unit:
 - at a convenient, high, and central location with no obstructions between the handset and base unit in an indoor environment.
 - away from electronic appliances such as TVs, radios, personal computers, wireless devices, or other phones.
 - facing away from radio frequency transmitters, such as external antennas of mobile phone cell stations. (Avoid putting the base unit on a bay window or near a window.)
- Coverage and voice quality depends on the local environmental conditions.
- If the reception for a base unit location is not satisfactory, move the base unit to another location for better reception.

Environment

- Keep the product away from electrical noise generating devices, such as fluorescent lamps and motors.
- The product should be kept free from excessive smoke, dust, high temperature, and vibration.
- Do not place heavy objects on top of the product.
- When you leave the product unused for a long period of time, unplug the product from the power outlet.
- The maximum calling distance may be shortened when the product is used in the

following places: Near obstacles such as hills, tunnels, underground, near metal objects such as wire fences, etc.

- Operating the product near electrical appliances may cause interference. Move away from the electrical appliances.

Routine care

- **Wipe the outer surface of the product with a soft moist cloth.**
- Do not use benzine, thinner, or any abrasive powder.

Other information

CAUTION: Risk of explosion if battery is replaced by an incorrect type. Dispose of used batteries according to the instructions.

Notice for downloading software or upgrading the operating system

- Product functions and operating procedures may change and certain applications may not function any longer if the product's operating system is upgraded.
- Confirm the safety and security of software before downloading or installing it on this product. Installing malware or viruses can cause malfunction and the disclosure of any private information stored in this product, or may cause excessive sound volume.

Notice for product disposal, transfer, or return

- This product can store your private/confidential information. To protect your privacy/confidentiality, we recommend that you erase information such as phonebook or caller list entries from the memory before you dispose of, transfer, or return the product.

Important Information

Information on Disposal in other Countries outside the European Union



These symbols are only valid in the European Union. If you wish to discard these items, please contact your local authorities or dealer and ask for the correct method of disposal.

SAR

This model meets international guidelines and EU requirements for exposure to radio waves. Your wireless device is a radio transmitter and receiver. It is designed not to exceed radio wave exposure limits recommended by international guidelines. These guidelines were developed by the independent scientific organisation ICNIRP and include safety margins designed to assure the protection of all persons, regardless of age and health. These guidelines also form the basis of international regulations and standards on RF Exposure.

The guidelines use a unit of measurement known as the Specific Absorption Rate, or SAR. The SAR limit for wireless devices is 2 W/kg. The highest SAR value for this device tested at the ear was 0.580 W/kg. The highest SAR value for this device tested on the body was 1.006 W/kg.*1

As SAR is measured utilizing the devices highest transmitting power the actual SAR of this unit while operating is typically below that indicated above. This is due to automatic changes to the power level of the device to ensure it only uses the minimum level required to communicate with the network. ICNIRP (<http://www.icnirp.org>)

*1 For body-worn operation, this device must be separated from the body by a minimum of 1.5 cm.

End-user licence

This is a legal agreement between you and Panasonic System Networks Co., Ltd. ("Panasonic") with respect to the software installed in and/or delivered by the Panasonic Premium Design Phone with Touchscreen. Carefully read all the terms of this agreement prior to using this product. Using this product indicates your acceptance of these terms.

Copyright:

The software is protected by copyright laws and international treaty provisions, and all other applicable laws. You acknowledge that you are receiving only a limited licence to use the software and related documentation, and that you shall obtain no title, ownership nor any other rights in or to the software and its related documentation, all of which title and rights shall remain with Panasonic or its licensor.

Licence:

1. You may use the software installed in and/or delivered by this product.
2. You may transfer your rights under this licence agreement on a permanent basis, provided that you transfer this agreement, all copies of the software, all related documentation and your Panasonic Premium Design Phone with Touchscreen, and the recipient thereof agrees to the terms of this agreement.

Restrictions:

You may not reverse engineer, decompile or disassemble the software, except as expressly permitted by applicable law. You may not use, copy, modify, alter, rent, lease or transfer the software, its related documentation, or any copies thereof, in whole or in part, except as expressly provided in this agreement. You may not export the software in contravention of any applicable U.S. or foreign export laws and regulations.

Open source software notice

Parts of this product use open source software supplied based on the relevant conditions of

Important Information

the Free Software Foundation's GPL and/or LGPL and other conditions. Please read all licence information and copyright notices related to the open source software used by this product. This information is available at the following web page:

www.panasonic.net/pcc/support/tel/sdect
At least three (3) years from delivery of this product, Panasonic System Networks Co., Ltd. will give to any third party who contacts us at the contact information provided below, for a charge of no more than the cost of physically distributing source code, a complete machine-readable copy of the corresponding source code and the copyright notices covered under the GPL and the LGPL. Please note that software licensed under the GPL and the LGPL is not under warranty.
www.panasonic.net/pcc/support/tel/sdect

Disclaimer

Panasonic System Networks Co., Ltd. ("Panasonic") shall not be liable for loss of data or other incidental or consequential damages resulting from the use of this product. This product can download, store, forward, and receive additional content, such as applications, ringtones, contact information, and media files. The use of such content may be restricted or prohibited by the rights of third parties, including but not limited to restriction under applicable copyright laws. You are entirely responsible for additional content that you download to or forward from this product; Panasonic is not responsible for such content or its use. Before using such content, it is your responsibility to verify that your intended use is properly licenced or is otherwise authorised. Panasonic does not warrant or guarantee the accuracy, integrity or quality of any additional content or any other third-party content. Under no circumstances will Panasonic be liable in any way for the improper use of additional content or other third-party content by this product or its operator. This document and any related product documentation may refer to services and applications that are provided by third parties. The use of such services or programs may require separate registration

with the third-party provider and may be subject to additional terms of use. For applications accessed on or through a third-party web site, please review the web site's terms of use and applicable privacy policy in advance.

Specifications

Connectivity

- GAP (Generic Access Profile)
- GSM: 900/1800 MHz
- W-CDMA: 900/2100 MHz
- Wi-Fi: IEEE 802.11b/g/n
- Bluetooth: version 3.0, Class 2
- USB: version 2.0

Frequency range

- DECT: 1.88 GHz to 1.90 GHz
- Wi-Fi: 2.4 GHz to 2.4835 GHz
- GSM900/W-CDMA900
Uplink: 880 MHz to 915 MHz
Downlink: 925 MHz to 960 MHz
- GSM1800
Uplink: 1.71 GHz to 1.785 GHz
Downlink: 1.805 GHz to 1.880 GHz
- W-CDMA2100
Uplink: 1.92 GHz to 1.98 GHz
Downlink: 2.11 GHz to 2.17 GHz

RF transmission power

- DECT: Approx. 10 mW (average power per channel)
- Wi-Fi: 80 mW (peak transmission power)
- GSM: 2 W (peak transmission power)
- W-CDMA: 250 mW (peak transmission power)

Handset operating system

- Android™ 4.0, Ice Cream Sandwich

Hardware

- Display: TFT colour 3.5-inch (HVGA: 320 × 480 pixels), capacitive touch screen
- Front camera: 0.3 M
- Rear camera: 2.0 M
- SIM card: 1.8/3 V
- Memory card: microSD, microSDHC up to 32 GB (not supplied)

Battery

- Lithium Ion (Li-Ion) 3.7 V/1,450 mAh

Talk time

- Landline calls: up to 10 hours
- GSM mobile calls: up to 5.3 hours

Important Information

- W-CDMA mobile calls: up to 4.6 hours
- Standby time***¹
- GSM and DECT connection: up to 180 hours
 - GSM connection only: up to 290 hours
 - W-CDMA and DECT connection: up to 180 hours
 - W-CDMA connection only: up to 290 hours
- Power source**
- Base unit: 220–240 V AC, 50/60 Hz
 - Charger: 100–240 V AC, 50/60 Hz
- Base unit power consumption**
- Standby: approx. 0.4 W
 - Maximum: approx. 0.8 W
- Charger power consumption**
- Standby: approx. 0.1 W
 - Maximum: approx. 4.0 W
- Operating conditions**
- 0 °C–40 °C, 20 %–80 % relative air humidity (dry)
- Charging conditions**
- 5 °C–40 °C
- *1 Use the control panel to turn the DECT connection on or off. See the Operating Instructions for more information (download information is on page 1).

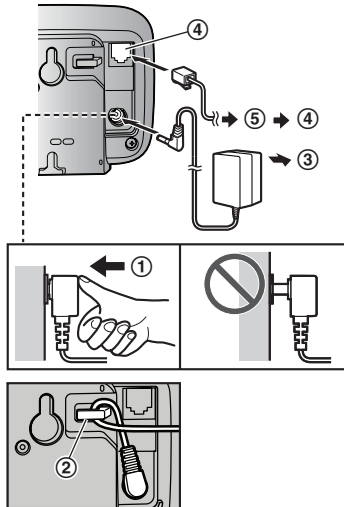
Getting Started

Preparing the base unit

- ① Insert the AC adaptor plug firmly into the base unit.
- ② Secure the cord by wrapping around the hook.
- ③ Connect the AC adaptor to the power outlet.
- ④ Insert the telephone line cord into the base unit and the telephone line socket until you hear a click.
- ⑤ **DSL/ADSL service users only:** Connect your DSL/ADSL filter (not supplied).^{*1}
^{*1} For Australia: Connect a DSL/ADSL filter between the telephone plug and telephone line cord.

Note:

- Use only the supplied Panasonic AC adaptor PNLV226AL.
- Use only the supplied telephone line cord.
- This product is not designed to be used with rotary/pulse dialling service.

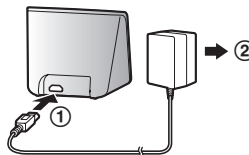


Preparing the charger

- ① Insert the AC adaptor plug firmly into the charger.
- ② Connect the AC adaptor to the power outlet.

Note:

- Use only the supplied Panasonic AC adaptor PNLV230AL.



Preparing the handset

Inserting a SIM card, microSD card, and the battery

A SIM card (not supplied) allows the handset to connect to a mobile phone service. Consult your mobile phone service provider for more information.

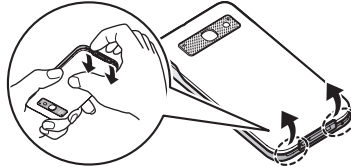
A microSD card (not supplied) allows you to expand the handset's storage capabilities.

Getting Started

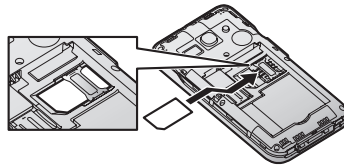
Important:

- When removing the battery, make sure you turn off the handset first.
- To avoid loss of data or malfunction, do not damage, carelessly handle, or short-circuit the gold-coloured contacts of the SIM card or microSD card.

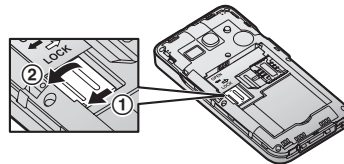
- 1 Remove the handset's cover.



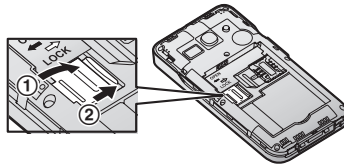
- 2 Position the SIM card with the gold-coloured contacts facing down, and then carefully slide the SIM card all the way into the SIM card slot.



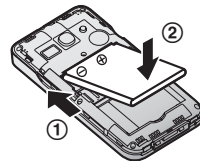
- 3 Open the microSD card cover by sliding it toward the nearest side of the handset (①) and then lifting up (②).



- 4 Insert the microSD card with the gold-coloured contacts facing down, close the microSD cover (①), and then gently slide the cover toward the opposite side of the handset (②).

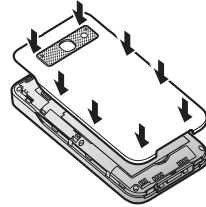


- 5 Insert the battery (①) and lower it into the handset (②).



Getting Started

- 6 Attach the cover.



Charging the handset

Charge the handset for about 5 hours before initial use. The charge indicator (1) lights while the handset is charging and turns off when the handset is fully charged.

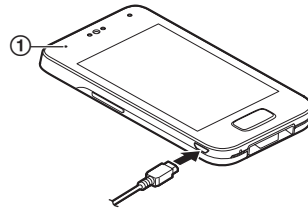
Important:

- If the handset is placed into the charger while talking on the phone, the call is not disconnected.



Place the handset into the charger.

or




Connect the AC adaptor directly to the handset.

Battery power icon

When the screen is turned on, the battery icon in the upper-right corner of the screen indicates the battery power as described below.



Note:

- When the handset is charging, ⚡ is displayed inside the battery power icon.
- You can also check the percentage of battery power remaining. From the home screen, tap  → [System settings] → [Battery].

Information about power and charging

AC adaptor connection

- The AC adaptor must remain connected at all times. (It is normal for the adaptor to feel warm during use.)
- The AC adaptor should be connected to a vertically oriented or floor-mounted AC outlet. Do not connect the AC adaptor to a ceiling-mounted AC outlet, as the weight of the adaptor may cause it to become disconnected.

Power failure

- The unit will not work during a power failure. We recommend connecting a corded-type telephone (without AC adaptor) to the same telephone line or to the same telephone line socket using a telephone double adaptor (for Australia)/a BT double adaptor (for New Zealand).

Battery use and replacement

- Use only the supplied battery. For replacement, use only the Panasonic rechargeable battery noted on page 2.
- The battery might swell when its life is close to an end. This is dependent on the usage conditions and is not a problem.

Battery charging

- It is normal for the handset to feel warm during charging.
- Clean the charge contacts of the handset, base unit, and charger with a soft and dry cloth once a month. Before cleaning the unit, disconnect from power outlets and any telephone line cords. Clean more often if the unit is exposed to grease, dust, or high humidity.
- Charging time and battery performance may vary depending on mobile phone network conditions.

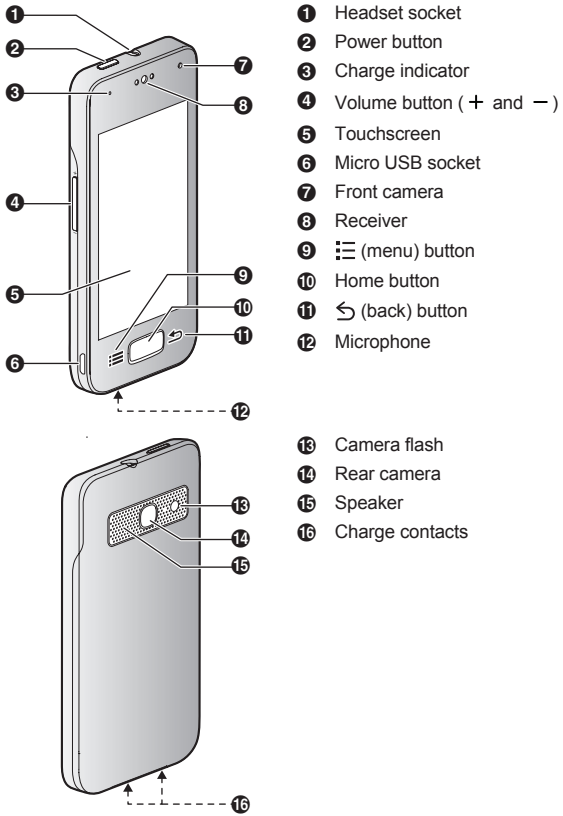
Saving battery power

- The amount of time you can use the handset before the battery needs to be charged varies depending on how you are using it. Each of the following can help you save battery power.
 - Turn off the screen when you are not using the handset (page 17).
 - Use the control panel to turn off the handset's Wi-Fi, GPS, and Bluetooth features. See the Operating Instructions for more information (download information is on page 1).
 - When you are away from home, use the control panel to turn off the handset's DECT connection to the base unit. Note that if you do not turn the connection back on when you return home, you will not be able to make or receive calls using the handset. See the Operating Instructions for more information (download information is on page 1).

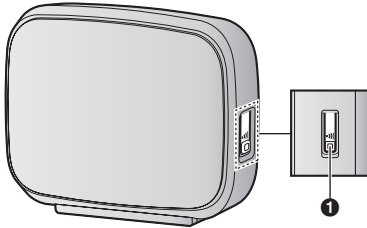
Getting Started

Getting to know your phone system

Handset overview



Base unit overview



- 1 **[📞]** (locator) button
Handsets registered to the base unit will ring when you press this button. This can be useful when you want to locate a misplaced handset.

Turning the handset on and off

To turn the handset on, press and hold the power button on the top of the handset. If the lock screen appears, unlock the screen (page 17).

To turn the handset off, press and hold the power button on the top of the handset, and then tap **[Power off]** → **[OK]**.

Note:

- The first time you turn on the handset, the setup wizard is displayed (page 17).

Turning the screen on and off

You can turn the screen off to save battery power and prevent accidental operation. While the screen is turned off, you can still receive calls, messages, etc. Any apps that were in use when the screen was turned off continue to run.

To turn the screen on and off, press the power button on the top of the handset. You can also turn the screen on by pressing the home button.

Unlocking the screen

When you turn the screen on, the lock screen may be displayed. This screen prevents you from accidentally tapping the handset and operating it unintentionally. When the default lock screen is displayed, you can unlock the screen by dragging the lock icon toward the unlock icon or toward the icon of the desired action.

Setup wizard

The first time you turn on the handset, the setup wizard prompts you to configure the following settings. Follow the on-screen instructions and configure each item as needed.

- 1 Select the language.
- 2 Configure date and time settings.

Getting Started

- 3 Select the desired automatic time adjustment setting.
 - If you select **[Use network provided time]**, a mobile network or Internet connection is needed for the handset to adjust its date and time setting automatically.
- 4 Select the desired mobile network type (displayed only if a SIM card is installed).
- 5 Add or create a Google™ account.
- 6 Configure Wi-Fi settings (displayed only if you choose to configure a Google account).

Note:

- Some items may be displayed in English regardless of the display language setting.

Setting up a Google account

Configuring your handset to synchronise with your Google account is an easy way to synchronise contacts and other information between different devices, such as computers or smartphones, and your phone system's handset. For example, you can use your computer to add your contacts to your Google account, and then configure the handset to synchronise with your Google account. Your contacts will be automatically downloaded to your handset.

The setup wizard will prompt you to either add your existing Google account information to the handset or create a new account. You can skip this step if desired. To configure Google account settings later, see the Operating Instructions (download information is on page 1).

Note:

- An Internet connection is required to configure a Google account. If you choose to use or create a Google account during the setup wizard, you will be prompted to enter Wi-Fi information so that the handset can connect to the Internet.

Wi-Fi settings

If you have a wireless router and an Internet connection, you can configure the handset to connect to your Wi-Fi network and access the Internet for synchronising your handset with your Google account, using the **[Browser]** app to view web pages, etc. If the setup wizard prompts you to enter Wi-Fi information, use the following procedure. To configure these settings later, see the Operating Instructions (download information is on page 1).

- 1 Select a Wi-Fi network.
 - If the desired Wi-Fi network is not displayed, you may need to enter the network name (also called the "SSID") manually. See the Operating Instructions for more information (download information is on page 1).
- 2 Enter the password if you are connecting to a secure Wi-Fi network.
- 3 Tap **[Connect]**.


Home button

You can display the home screen at any time by pressing the home button.

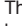

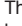

Navigation buttons

☰ (menu) button: Displays a list of options available in the current screen.

Getting Started






 (**back**) button: Returns to the previous screen or closes the current dialogue box, menu, on-screen keyboard, etc.

Note:

- The  and  buttons are displayed in most screens. They appear at the bottom of the handset next to the home button, and turn off if you do not use them for a while. To display the  and  buttons after they have turned off, simply touch the area of the handset where they would normally be displayed.


Landline app






The **[Landline]** app is displayed by default on the handset's home screen, and allows you to access commonly used features of your phone system.

-  Allows you to make intercom calls
-  Allows you to change certain features of your phone system
-  Allows you to use the phone system's answering system
-  Allows you to access the base unit's call log
-  Allows you to use the base unit's key finder feature




Making calls

Important:

- When the handset is connected to the base unit,  or **ECO** is displayed in the status bar. If neither of these icons is displayed, the handset cannot make or receive landline calls.
- If the handset is placed into the charger while talking on the phone, the call is not disconnected.

- 1 Tap **[Phone]** in the home screen or app list.
- 2 Select the  tab at the top of the screen.
- 3 Enter the phone number and then tap  at the bottom of the screen.
 - To erase a number, tap .
 - To enter a dialling pause, tap and hold .
- 4 Select the phone line you want to use to make the call.
- 5 When finished, tap  to end the call.

Answering calls

- 1 When a call is being received, tap  and drag it to .
- 2 Tap  to end the call.

Getting Started

Receiver or speaker volume






Press the volume button up (+) and down (-) repeatedly during a call.

Using the call logs

The handset and base unit each log your calls, allowing you to check a record of your calls. The following symbols are used to indicate each type of call stored in the call logs.




Important:

- Caller ID is required to log missed and answered calls (page 25).



Call log	Icon	Meaning	Phone line used
Handset call log	 (red)	Missed call	Mobile only
	 (blue)	Missed call	Landline only*1
		Answered call	Landline*1, mobile
	 (green)	Outgoing call	Landline*1, mobile
Base unit call log	 (red)	Missed call	Landline only
	 (blue)	Answered call or missed call that has been confirmed	Landline only

*1 The handset call log can only log landline calls that are received while the handset is connected to the base unit.

Making a call from the handset call log



- 1 Tap **[Phone]** in the home screen or app list.
- 2 Select the  tab at the top of the screen.
- 3 Select the type of calls you want to view by tapping the desired tab.
- 4 Tap  next to the phone number or person you want to call.
- 5 Select the phone line you want to use to make the call.
- 6 When finished, tap  to end the call.

Making a call from the base unit call log

- 1 Tap **[Landline]** in the home screen or app list.
- 2 Tap **[Call log list]**.
 - The handset connects to the base unit.
- 3 Tap  next to the phone number or person you want to call.
- 4 Select the phone line you want to use to make the call.
- 5 When finished, tap  to end the call.

Ringtones and audio settings





Selecting an audio profile

- 1 From the home screen, tap  → **[System settings]** → **[Audio profiles]**.
- 2 Tap  next to the desired audio profile.



Preset audio profiles

- **[General]**: You can select the desired ringtone, ringer volume, etc.
- **[Silent]**: The ringer is turned off and the phone does not vibrate.
- **[Meeting]**: The ringer is turned off and the phone only vibrates.
- **[Outdoor]**: The settings of the **[General]** profile are used. The ringer volume is set to the maximum level and vibration is turned on.

Adding contacts

- 1 Tap **[People]** in the home screen or app list.
- 2 Tap .
- 3 If prompted, follow the on-screen instructions to determine where the contact will be saved.
 - Contacts can be stored in the handset's memory, on the SIM card, or synchronised with your Google account.
 - Tap **[Add new account]** (if displayed) if you want to register a Google account to the handset.
- 4 Enter the information as needed.
 - To add an image, tap the image icon.
 - To undo the changes you have made, tap  → **[Discard]** → **[OK]**. Note that if you tap , the changes will be saved.
 - To add the new contact information to an existing contact, tap  → **[Join]**.
- 5 Tap **[DONE]**.

Calling a contact


- 1 Tap **[Phone]** in the home screen or app list.
- 2 Select the  tab at the top of the screen.
- 3 Tap the desired contact.
- 4 Select the phone line you want to use to make the call.
- 5 When finished, tap  to end the call.

Answering system features

Turning the answering system on and off

The answering system is already turned on at the time of purchase.

Getting Started

- 1 Tap **[Landline]** in the home screen or app list.
- 2 Tap **[Answering system]**.
 - The handset connects to the base unit.
- 3 Turn the **[Answer]** switch on or off.
 -  is displayed in the status bar while the answering system is turned on.

Playing messages

- 1 Tap **[Landline]** in the home screen or app list.
- 2 Tap **[Answering system]**.
 - The handset connects to the base unit.
 - The number of messages is displayed at the top of the screen.
- 3 **To play all new messages:**
 - Tap **[Play new message]**.
 - To play all messages:**
 - Tap **[Play all messages]**.
 - To play a specific message:**
 - Tap **[Message list]** and then tap ► next to the desired message.

Note:

- Messages that have been played have a checkmark next to them in the message list.

Region setting

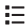
This setting resets certain base unit settings to their default values based on the region you select.

- 1 Tap **[Landline]** in the home screen or app list.
- 2 Tap **[Landline settings]** → **[Initial settings]**.
 - The handset connects to the base unit.
- 3 Tap **[Country]**.
- 4 Select the desired country.

Note:

- Changing the unit's region setting may cause the settings for your country or your customised settings to return to their default settings.

Display language


- 1 From the home screen, tap  → **[System settings]** → **[Language & input]** → **[Language]**.
- 2 Select the desired language.

Note:


- Some items may be displayed in English regardless of the display language setting.

Date and time

Selecting automatic or manual date and time setting


- 1 From the home screen, tap  → **[System settings]** → **[Date & time]** → **[Automatic date & time]**.
 - 2 **To set the date and time automatically:**
 - Select the desired method.
 - If you select **[Use network provided time]**, a mobile network or Internet connection is needed for the handset to adjust its date and time setting automatically.
 - To set the date and time manually:**
 - Select **[Off]**.
-

Setting the date and time manually

- 1 From the home screen, tap  → **[System settings]** → **[Date & time]**.
- 2 Make sure that **[Automatic date & time]** is set to **[Off]**.
- 3 **To set the date:**
 - Tap **[Set date]**, select the desired date, and then tap **[Set]**.
 - To set the time:**
 - Tap **[Set time]**, select the desired time, and then tap **[Set]**.

Getting Started

Troubleshooting

Problem	Cause and/or solution
 is displayed.	<ul style="list-style-type: none">• The handset is too far from the base unit. Move closer.• The base unit's AC adaptor is not properly connected. Reconnect AC adaptor to the base unit.• The handset is not registered to the base unit. Register it. See the Operating Instructions for more information (download information is on page 1).• During standby mode, the transmission range of the base unit is reduced if ECO mode is on. If required, turn ECO mode off. See the Operating Instructions for more information (download information is on page 1).
I cannot make landline calls.	<ul style="list-style-type: none">• This product is not designed to be used with rotary/pulse dialling service.
The handset does not turn on even after charging the battery.	<ul style="list-style-type: none">• The handset is turned off. Press and hold the power button on the top of the handset.
I fully charge the battery, but the low battery message is still displayed and/or the operating time seems to be shorter.	<ul style="list-style-type: none">• Clean the charge contacts of the handset and charger with a dry cloth and charge again.• It is time to replace the battery (page 2).
Caller information for landline calls is not displayed.	<ul style="list-style-type: none">• If your unit is connected to any additional telephone equipment, remove the additional equipment and plug the unit directly into the wall socket.• If you use a DSL/ADSL service, we recommend connecting a filter (contact your DSL/ADSL service provider) to the telephone line between the base unit and the telephone line socket. Contact your DSL/ADSL provider for details. (for Australia)• If you use a DSL/ADSL (JetStream) service, we recommend that you contact your DSL/ADSL service provider to have a DSL/ADSL Splitter installed. We do not recommend the use of generic DSL/ADSL filters. Contact your DSL/ADSL service provider for details. (for New Zealand)• Other telephone equipment may be interfering with this unit. Disconnect the other equipment and try again. (for Australia)• Other telephone equipment such as a monitored Burglar Alarm or the modem in the SKY Digital decoder may be interfering with this unit. Disconnect the other equipment and try again. (for New Zealand)

Getting Started

Problem	Cause and/or solution
Noise is heard, sound cuts in and out.	<ul style="list-style-type: none">● You are using the handset or base unit in an area with high electrical interference. Re-position the base unit and use the handset away from sources of interference.● Move closer to the base unit.● If you do not subscribe to DSL/ADSL service, there may be an environmental issue that is causing the interference (noise). Move closer to the base unit and check whether there is noise. If there is no noise, some environmental interference has caused the noise.● If you use a DSL/ADSL service, we recommend connecting a filter (contact your DSL/ADSL service provider) to the telephone line between the base unit and the telephone line socket. Contact your DSL/ADSL provider for details. (for Australia)● If you use a DSL/ADSL (JetStream) service, we recommend that you contact your DSL/ADSL service provider to have a DSL/ADSL Splitter installed. We do not recommend the use of generic DSL/ADSL filters. Contact your DSL/ADSL service provider for details. (for New Zealand)







Caller ID support

The base unit is Caller ID compatible. Caller ID is a service provided by your landline phone service provider which may require a subscription. Contact your landline phone service provider for details and availability.

Other Information

Frequently asked questions (for Australia)

Call waiting, conference calls


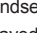
Question	Answer
<p>How can I use call waiting to answer a second call when I am already talking on the phone? Do I need to subscribe to call waiting service?</p>	<ul style="list-style-type: none">• You may need to subscribe to your phone service provider's call waiting service in order to answer a second call on the same line. Consult your landline or mobile phone service provider for information about this feature.• If you are talking on a landline call and another landline call is received: Typical operation is as follows (operation varies by landline phone service provider). To answer the second call when you hear the call waiting tone, or to switch between calls, tap R. To switch between calls, tap R → [2]. To disconnect the current call, tap R → [1].• If you are talking on a landline call and a mobile call is received, or if you are talking on a mobile call and a landline call is received: When you hear the call waiting tone, tap  and drag it to . The first call is disconnected.• If you are talking on a mobile call and another mobile call is received: When you hear the call waiting tone, tap  and drag it to . To switch between calls, tap . To join the calls and have a conversation with all parties, tap .
<p>How can I make a conference call using my landline phone service?</p>	<ul style="list-style-type: none">• You may need to subscribe to your landline phone service provider's conference call service in order to make conference calls. Consult your landline phone service provider for information about this feature. Typical operation is as follows (operation varies by landline phone service provider). While on a landline call, tap R, and then dial the phone number of the other party that you want to add to the existing call. When that party answers, tap R → [3] to begin the conference call.
<p>Why can I not use call waiting or make conference calls by tapping R?</p>	<ul style="list-style-type: none">• You may need to change the base unit's recall/flash setting to [90ms] (default: [100ms].) Refer to the Operating Instructions for details.• You may need to subscribe to call waiting or conference call service. Contact your landline phone service provider.

Other Information

Battery charge

Question	Answer
How do I charge the handset?	<ul style="list-style-type: none">● Insert the included battery into the handset, and then place the handset into the included charger or connect the AC adaptor directly to the handset. The handset's charge indicator lights while the handset is charging, and turns off then the handset is fully charged. It takes about 5 hours to fully charge the handset.
Can I charge the handset after each call or when the handset is fully charged?	<ul style="list-style-type: none">● Yes, you can charge the handset anytime. The battery will not overcharge. By placing the handset into the charger after every call, for example, you can ensure that the handset is always fully charged. (If the handset is placed into the charger while talking on the phone, the call is not disconnected.)
Where can I buy a replacement battery?	<ul style="list-style-type: none">● Please contact your nearest Panasonic dealer for sales information.

Range/Distance (No link to base)

Question	Answer
What is the operational range of the DECT connection between the base unit and handset? Why is  displayed?	<ul style="list-style-type: none">● Operational range can vary by a variety of factors included operation environment, therefore we cannot provide a operational range guideline.●  is displayed if the handset is out of range of the base unit. In this case, make sure that the AC adaptor is properly connected to the wall socket and to the base unit, and move the handset closer to the base unit. You may need to wait up to 90 seconds while the handset reconnects to the base unit.● If the above remedies do not solve the problem, refer to the troubleshooting section in the Operating Instructions for more information.

Caller ID

Question	Answer
What should I do to display caller information?	<ul style="list-style-type: none">● You must subscribe to a Caller ID service. Contact your landline phone service provider for details.

Registration

Question	Answer
How can I register a handset to the base unit?	<ul style="list-style-type: none">● Follow the instructions found in the Operating Instructions, and take note of the following.<ul style="list-style-type: none">– Make sure you are trying to register either the included handset or a supported optional handset (see below for model number).– Make sure the AC adaptor is connected to the base unit.– Make sure the handset is fully charged.

Other Information

Question	Answer
Which handset model is compatible with the base unit?	<ul style="list-style-type: none">• The optional handset is KX-PRXA15AZ.

IMPORTANT

If your product is not working properly

- 1** Read the **Operating Instructions** for more information (download information is on page 1).
- 2** Visit our website:
<http://www.panasonic.com.au>
- 3** Contact us via the web at:
<http://www.panasonic.com.au/support/>
- 4** Contact our customer care centre on:
Tel.: 132600

Warranty (for New Zealand)

Panasonic New Zealand undertakes to:

Repair or at its option, replace without cost to the owner, either for material or labour, any part which is found to be defective within two years of the date of purchase.

THIS EXPRESS WARRANTY DOES NOT COVER:

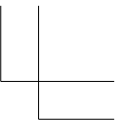
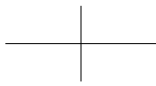
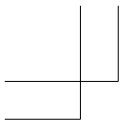
- 1) Pick up and delivery.
- 2) Batteries.
- 3) Repairs when the product has not been used in accordance with the Operating Instructions Manual or has been modified.
- 4) Normal maintenance and cleaning as required in the product's Operating Instructions Manual.
- 5) Service calls to:
 - a Correct the set up of the product
 - b Instruct you how to use the product
 - c Replace fuses or correct your building's wiring
- 6) Damage to the product caused by accident, misuse or Act of God.
- 7) Repairs when the product has been dismantled, repaired, modified or serviced by other than a Panasonic Authorised Dealer authorised to service that type of product.

IF YOUR PANASONIC PRODUCT FAILS WITHIN THE WARRANTY PERIOD:

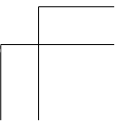
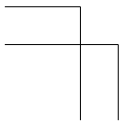
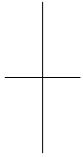
Take it to the Authorised Panasonic Dealer from whom you purchased the product who will repair it (or arrange to have it repaired) during their normal business hours. All enquiries regarding warranty or otherwise, please call – Customer Support Centre Tel. No.: (09) 272 0178

NOTE: THIS EXPRESS WARRANTY IS OFFERED AS AN EXTRA BENEFIT AND DOES NOT AFFECT YOUR LEGAL RIGHTS.

Notes



Notes



For Australia
Customer Care Centre Tel. No.: 132600
or website www.panasonic.com.au
For New Zealand
Customer Care Centre Tel. No.: (09) 272 0178 or website www.panasonic.co.nz



Sales Department:
Panasonic Australia Pty. Limited
1 Innovation Road, Macquarie Park NSW 2113, Australia

Sales Department:
Panasonic New Zealand Ltd.
350 Te Irirangi Drive, East Tamaki, Private Bag 14911 Panmure, Auckland, New Zealand
Phone: (09) 272 0100
Fax: (09) 272 0137

Panasonic System Networks Co., Ltd.
1-62, 4-chome, Minoshima, Hakata-ku, Fukuoka 812-8531, Japan
© Panasonic System Networks Co., Ltd. 2013



PNQW3803ZA

PNQW3803ZA CC0913YK0 (E)