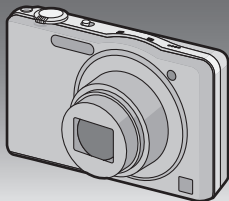


Panasonic®

Basic Operating Instructions Digital Camera

Model No. **DMC-SZ7**

LUMIX



Before use, please read these instructions completely.



More detailed instructions on the operation of this camera are contained in “Operating Instructions for advanced features (PDF format)” in the supplied CD-ROM. Install it on your PC to read it.



Dear Customer,

We would like to take this opportunity to thank you for purchasing this Panasonic Digital Camera. Please read these Operating Instructions carefully and keep them handy for future reference. Please note that the actual controls and components, menu items, etc. of your Digital Camera may look somewhat different from those shown in the illustrations in these Operating Instructions.

Carefully observe copyright laws.

- Recording of pre-recorded tapes or discs or other published or broadcast material for purposes other than your own private use may infringe copyright laws. Even for the purpose of private use, recording of certain material may be restricted.

Information for Your Safety

WARNING:

To reduce the risk of fire, electric shock or product damage,

- Do not expose this unit to rain, moisture, dripping or splashing.
- Do not place objects filled with liquids, such as vases, on this unit.
- Use only the recommended accessories.
- Do not remove covers.
- Do not repair this unit by yourself. Refer servicing to qualified service personnel.

The socket outlet shall be installed near the equipment and shall be easily accessible.

■ Product identification marking

Product	Location
Digital Camera	Bottom

■ About the battery pack

CAUTION

- Danger of explosion if battery is incorrectly replaced. Replace only with the type recommended by the manufacturer.
- When disposing the batteries, please contact your local authorities or dealer and ask for the correct method of disposal.

- Do not heat or expose to flame.
- Do not leave the battery(ies) in a car exposed to direct sunlight for a long period of time with doors and windows closed.

Warning

Risk of fire, explosion and burns. Do not disassemble, heat above 60 °C or incinerate.

■ About the AC adaptor (supplied)

CAUTION!

To reduce the risk of fire, electric shock or product damage,

- **Do not install or place this unit in a bookcase, built-in cabinet or in another confined space. Ensure this unit is well ventilated.**
 - **Do not obstruct this unit's ventilation openings with newspapers, tablecloths, curtains, and similar items.**
 - **Do not place sources of naked flames, such as lighted candles, on this unit.**
- The unit is in the standby condition when the AC adaptor is connected. The primary circuit is always "live" as long as the AC adaptor is connected to an electrical outlet.

■ Cautions for Use

- Do not use any other USB connection cables except the supplied one.
- Always use a genuine Panasonic AV cable (DMW-AVC1: optional).
- Always use a genuine Panasonic HDMI mini cable (RP-CDHM15, RP-CDHM30: optional).
Part numbers: RP-CDHM15 (1.5 m), RP-CDHM30 (3.0 m)

In the event of abnormal operation (e.g. if the unit emits smoke or an unusual smell), immediately stop operating the unit and consult the Panasonic Customer Care Centre on 132600.

Keep this unit as far away as possible from electromagnetic equipment (such as microwave ovens, TVs, video games etc.).

- If you use this unit on top of or near a TV, the pictures and/or sound on this unit may be disrupted by electromagnetic wave radiation.
- Do not use this unit near cell phones because doing so may result in noise adversely affecting the pictures and/or sound.
- Recorded data may be damaged, or pictures may be distorted, by strong magnetic fields created by speakers or large motors.
- Electromagnetic wave radiation generated by microprocessors may adversely affect this unit, disturbing the pictures and/or sound.
- If this unit is adversely affected by electromagnetic equipment and stops functioning properly, turn this unit off and remove the battery or disconnect AC adaptor (supplied). Then reinsert the battery or reconnect AC adaptor and turn this unit on.

Do not use this unit near radio transmitters or high-voltage lines.

- If you record near radio transmitters or high-voltage lines, the recorded pictures and/or sound may be adversely affected.

Information about the software used by this product can be viewed by pressing [MENU/SET], selecting [Setup] → [Version Disp.], and then pressing [MENU/SET].
--

-If you see this symbol-

Information on Disposal in other Countries outside the European Union

This symbol is only valid in the European Union.

If you wish to discard this product, please contact your local authorities or dealer and ask for the correct method of disposal.



Contents

Information for Your Safety	2
Before Use	6
Standard Accessories	7
Names and Functions of Main Parts	8
Inserting and Removing the Card (optional)/the Battery	9
Charging the Battery	10
Sequence of operations	11
Reading the Operating Instructions (PDF format)	12
Installing supplied software	13
Specifications	14

Before Use

■ Care of the camera

- Do not subject to strong vibration, shock, or pressure.
- This camera is not dust/splash/water proof.

Avoid using the camera in places with a lot of dust, water, sand, etc.

■ About Condensation (When the lens is fogged up)

- Condensation occurs when the ambient temperature or humidity changes. Be careful of condensation since it causes lens stains, fungus and camera malfunction.
- If condensation occurs, turn the camera off and leave it for about 2 hours. The fog will disappear naturally when the temperature of the camera becomes close to the ambient temperature.

Standard Accessories

Check that all the accessories are supplied before using the camera.
Product numbers correct as of January 2012. These may be subject to change.

- 1 Battery Pack
(Indicated as **battery pack** or **battery** in the text)
Charge the battery before use.
- 2 AC Adaptor
Can be used for charging and playback.
- 3 USB Connection Cable
- 4 CD-ROM
 - Software
 - Operating Instructions for advanced featuresInstall on your PC before use.
- 5 Hand Strap

- SD Memory Card, SDHC Memory Card and SDXC Memory Card are indicated as **card** in the text.

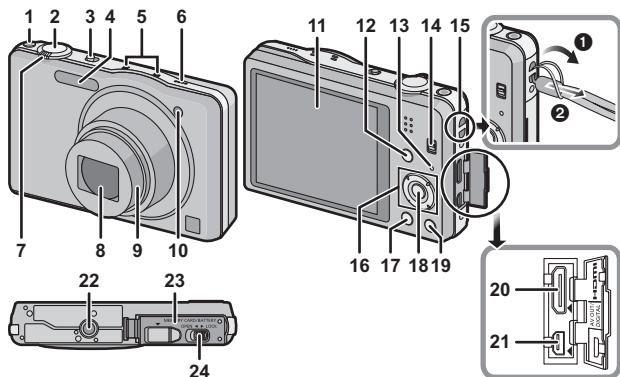
- **The card is optional.**

You can record or play back pictures on the built-in memory when you are not using a card.

- Consult the dealer or your nearest Service Centre if you lose the supplied accessories. (You can purchase the accessories separately.)

<div>1</div> <div></div> <div>DMW-BCK7E</div>	<div>2</div> <div></div> <div>VSK0776</div>
<div>3</div> <div></div> <div>K1HY08YY0025</div>	<div>4</div> <div></div> <div>VFF0936</div>
<div>5</div> <div></div> <div>VFC4297</div>	

Names and Functions of Main Parts



- | | | | |
|--|-----------------------|--|--------------------------------------|
| 1 | Motion picture button | 13 | Charging lamp |
| 2 | Shutter button | 14 | REC/PLAY switch |
| 3 | Camera ON/OFF switch | 15 | Strap eyelet |
| 4 | Flash | <ul style="list-style-type: none"> • Be sure to attach the strap when using the camera to ensure that you will not drop it. | |
| 5 | Microphone | 16 | Cursor buttons |
| 6 | Speaker | 17 | [DISP.] button |
| <ul style="list-style-type: none"> • Be careful not to cover the speaker with your finger. Doing so may make sound difficult to hear. | | 18 | [MENU/SET] button |
| 7 | Zoom lever | 19 | [Q.MENU]/[/↵] (Delete/Cancel) button |
| 8 | Lens | 20 | [HDMI] socket |
| 9 | Lens barrel | 21 | [AV OUT/DIGITAL] socket |
| 10 | Self-timer indicator | 22 | Tripod receptacle |
| | AF Assist Lamp | 23 | Card/Battery door |
| 11 | LCD monitor | 24 | Release lever |
| 12 | [MODE] button | | |

Inserting and Removing the Card (optional)/the Battery

- Check that this unit is turned off.
- We recommend using a Panasonic card.

1 Slide the release lever in the direction of the arrow and open the card/battery door.

- Always use genuine Panasonic batteries (DMW-BCK7E).
- If you use other batteries, we cannot guarantee the quality of this product.

2 **Battery:** Being careful about the battery orientation, insert all the way until you hear a locking sound and then check that it is locked by lever (A). Pull the lever (A) in the direction of the arrow to remove the battery.

Card: Push it securely all the way until you hear a “click” while being careful about the direction in which you insert it.

To remove the card, push the card until it clicks, then pull the card out upright.

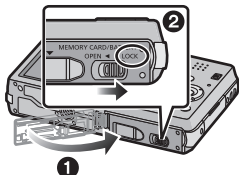
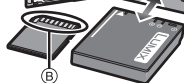
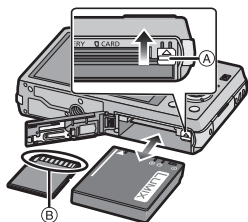
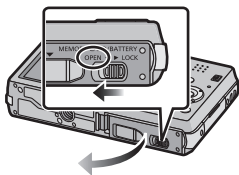
(B): Do not touch the connection terminals of the card.

3 **1:** Close the card/battery door.

2: Slide the release lever in the direction of the arrow.

Note

- Keep the Memory Card out of reach of children to prevent swallowing.



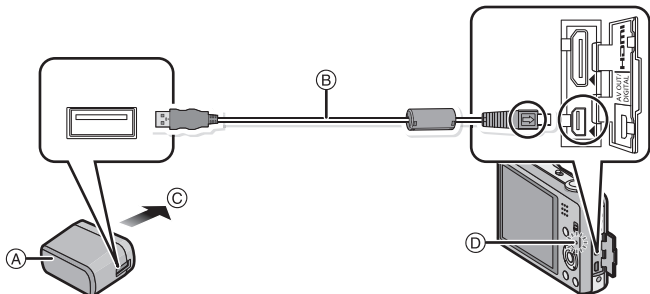
Charging the Battery

Use the dedicated AC adaptor (supplied), USB connection cable (supplied) and battery.

- The battery is not charged when the camera is shipped. Charge the battery before use.
- Charge the battery with the AC adaptor (supplied) indoors (10 °C to 30 °C).

- Charge the battery only when it is inserted in the camera.
- Check that this unit is turned off.

Connect the AC adaptor (A) (supplied) and this camera with the USB connection cable (B) (supplied), and insert the AC adaptor (A) (supplied) into the power outlet.



© To power outlet

- Do not use any other USB connection cables except the supplied one. Use of cables other than the supplied USB connection cable may cause a malfunction.
- Do not use any other AC adaptors except the supplied one.

■ About the charging lamp (D)

On: Charging.

Off: Charging has completed. (Charging time: Approx. 180 min)

■ About batteries that you can use with this unit

The battery that can be used with this unit is DMW-BCK7E.

Sequence of operations

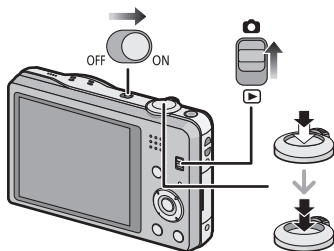
1

Slide the REC/PLAY switch to [📷] and then turn the camera on.

- The clock is not set when the camera is shipped. Set the date and time before using the camera.

2

Press the shutter button halfway to focus and then press it fully to take the picture.



■ Selecting the Recording Mode

Press [MODE] to select the Recording Mode.

iA: Taking pictures with automatic settings.

📷: Take pictures with your own settings.

MINI: Take pictures to make them look like a diorama. (also known as Tilt Shift Focus)

SCN: Take pictures according to scene.

3D: Takes a 3D picture.

■ Recording Motion Pictures

Start recording by pressing the motion picture button.

- Stop the recording by pressing the motion picture button again.
- Maximum time to record motion pictures continuously with [AVCHD] is 29 minutes 59 seconds. (excluding when [SH] is set)
- Maximum time to record motion pictures continuously with [MP4] is 29 minutes 59 seconds. Also, motion pictures recorded continuously in [MP4] is up to 4 GB. Given this constraint, the maximum length of continuous recording in [FHD] is approximately 24 minutes 43 seconds. The maximum available recording time continuously is displayed on the screen.

■ Setting the Menu

Press [MENU/SET] to display the menu screen to change the recording function, camera settings, and other settings.

■ Playing Back Pictures ([Normal Play])

Slide the REC/PLAY switch to [▶].

- Press ◀ or ▶ to select the picture.

■ Deleting Pictures

Select the picture, and then press [🗑️/↶].

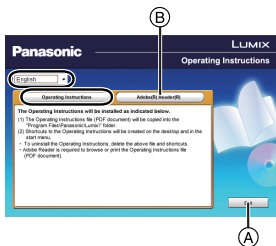
- Confirmation screen is displayed. Picture is deleted by selecting [Yes].

Reading the Operating Instructions (PDF format)

More detailed instructions on the operation of this camera are contained in “Operating Instructions for advanced features (PDF format)” in the supplied CD-ROM. Install it on your PC to read it.

■ For Windows

- 1** Turn the PC on and insert the CD-ROM containing the Operating Instructions (supplied).
- 2** Click the [Operating Instructions].
- 3** Select the desired language and then click [Operating Instructions] to install.
(A) To return to the install menu.
- 4** Double click the “Operating Instructions” shortcut icon on the desktop.



■ When the Operating Instructions (PDF format) will not open

You will need Adobe Acrobat Reader 5.0 or later or Adobe Reader 7.0 or later to browse or print the Operating Instructions (PDF format).

Insert the CD-ROM containing the Operating Instructions (supplied), click (B) and then follow the messages on the screen to install.

(Compatible OS: Windows XP SP3/Windows Vista SP2/Windows 7)

- You can download and install a version of Adobe Reader that you can use with your OS from the following Web Site.

<http://get.adobe.com/reader/otherversions/>

Installing supplied software

- The supplied CD-ROM includes the following software.
 - PHOTOfunSTUDIO 8.0 AE (Windows XP/Vista/7)
 - LoiLoScope 30 day full trial version (Windows XP/Vista/7)
(This will only install a shortcut to the trial version download site.)
- Before inserting the CD-ROM, close all running applications.

1

Check the environment of your PC.

- **Operating environment of “PHOTOfunSTUDIO 8.0 AE”**

– OS:

Windows® XP (32bit) SP3,

Windows Vista® (32bit) SP2,

Windows® 7 (32bit/64bit) and SP1

– CPU:

Pentium® III 500 MHz or higher (Windows® XP),

Pentium® III 800 MHz or higher (Windows Vista®),

Pentium® III 1 GHz or higher (Windows® 7)

– Display:

1024×768 pixels or more (1920×1080 pixels or more recommended)

– RAM:

512 MB or more (Windows® XP/Windows Vista®),

1 GB or more (Windows® 7 32bit),

2 GB or more (Windows® 7 64bit)

– Free hard disk space:

450 MB or more for installing software

- Refer to the operating instructions of “PHOTOfunSTUDIO” (PDF) for further operating environment.

2

Insert the CD-ROM with the supplied software.

- When you insert the supplied CD-ROM, the install menu will start.

3

Click on the [Applications] on the install menu.

4

Click on the [Recommended Installation].

- Proceed with installation according to messages appearing on the screen.



Note

- The software compatible with your PC will be installed.
- “PHOTOfunSTUDIO” is not compatible with Mac.

Specifications

Digital Camera:

Information for your safety

Power Source:	DC 5.1 V
Power Consumption:	1.3 W (When recording) 0.9 W (When playing back)

Camera effective pixels	14,100,000 pixels	
Image sensor	1/2.33" MOS sensor, total pixel number 15,300,000 pixels, Primary colour filter	
Lens	Optical 10× zoom, f=4.5 mm to 45 mm (35 mm film camera equivalent: 25 mm to 250 mm)/F3.1 (Wide) to F5.9 (Tele)	
Image stabiliser	Optical method	
Focus range	Normal	50 cm (Wide)/1.5 m (Tele) to ∞ (9× is 2 m to ∞)
	Macro/ Intelligent auto/ Motion picture	5 cm (Wide)/1.5 m (Tele) to ∞ (9× is 2 m to ∞)
	Scene Mode	There may be differences in the above settings.
Shutter system	Electronic shutter+Mechanical shutter	
Minimum Illumination	Approx. 8 lx (when i-low light is used, the shutter speed is 1/25th of a second)	
Shutter speed	8 seconds to 1/1600th of a second	
Exposure (AE)	Auto (Programme AE)	
Metering mode	Multiple	
LCD monitor	3.0" TFT LCD (4:3) (Approx. 460,000 dots) (field of view ratio about 100%)	
Microphone	Stereo	
Speaker	Monaural	
Recording media	Built-in Memory (Approx. 70 MB)/SD Memory Card/ SDHC Memory Card/SDXC Memory Card	

Recording file format	
Still Picture	JPEG (based on "Design rule for Camera File system", based on "Exif 2.3" standard)/DPOF corresponding/MPO
Motion pictures	AVCHD/MP4
Audio compression format	AVCHD: Dolby Digital (2ch) MP4: AAC (2ch)
Interface	
Digital	"USB 2.0" (High Speed)
Analogue video	NTSC/PAL Composite (Switched by menu)
Audio	Audio line output (monaural)
Terminal	
[AV OUT/DIGITAL]	Dedicated jack (8 pin)
[HDMI]	MiniHDMI TypeC
Dimensions (excluding the projecting parts)	Approx. 99.0 mm (W)×59.4 mm (H)×21.0 mm (D)
Mass	Approx. 133 g (with card and battery) Approx. 116 g (excluding card and battery)
Operating temperature	0 °C to 40 °C
Operating humidity	10%RH to 80%RH

AC Adaptor (Panasonic VSK0776):

Information for your safety

Input:	~ 110 V to 240 V, 50/60 Hz, 0.2 A
Output:	=== 5 V, 800 mA

Battery Pack (lithium-ion) (Panasonic DMW-BCK7E):

Information for your safety

Voltage/capacity:	3.6 V/680 mAh
--------------------------	---------------

- SDXC Logo is a trademark of SD-3C, LLC.
- "AVCHD" and the "AVCHD" logo are trademarks of Panasonic Corporation and Sony Corporation.
- Manufactured under license from Dolby Laboratories. Dolby and the double-D symbol are trademarks of Dolby Laboratories.
- HDMI, the HDMI Logo, and High-Definition Multimedia Interface are trademarks or registered trademarks of HDMI Licensing LLC in the United States and other countries.
- HDAVI Control™ is a trademark of Panasonic Corporation.
- QuickTime and the QuickTime logo are trademarks or registered trademarks of Apple Inc., used under license therefrom.
- Mac and Mac OS are trademarks of Apple Inc., registered in the U.S. and other countries.
- Windows and Windows Vista are either registered trademarks or trademarks of Microsoft Corporation in the United States and/or other countries.
- This product uses "DynaFont" from DynaComware Corporation. DynaFont is a registered trademark of DynaComware Taiwan Inc.
- Other names of systems and products mentioned in these instructions are usually the registered trademarks or trademarks of the manufacturers who developed the system or product concerned.

This product is licensed under the AVC patent portfolio license for the personal and non-commercial use of a consumer to (i) encode video in compliance with the AVC Standard ("AVC Video") and/or (ii) decode AVC Video that was encoded by a consumer engaged in a personal and non-commercial activity and/or was obtained from a video provider licensed to provide AVC Video. No license is granted or shall be implied for any other use. Additional information may be obtained from MPEG LA, LLC.

See <http://www.mpegla.com>.

AVCHD™

VIERA
Link

HDMI

DOLBY
DIGITAL
STEREO CREATOR



Panasonic Corporation

Web Site: <http://panasonic.net>

© Panasonic Corporation 2012