

Panasonic[®]

Operating Instructions

Digital photo management software

PHOTOfunSTUDIO 3.0

Thank you for using PHOTOfunSTUDIO.
Before use, please read these instructions completely.

 **First, acquire pictures to PC!**



 **Categorize pictures!**



 **Process pictures!**



 **Output pictures!**



Before Use

Introduction.....	4
What can PHOTOfunSTUDIO do?.....	6
Supported picture files.....	7
System requirements	8

Setting up

Connecting a digital camera to a PC.....	10
Starting PHOTOfunSTUDIO.....	11

Basic operations

Switching among display modes	14
List (Thumbnail) mode	15
Focus mode	17
Full Screen mode	18
Calendar mode	19
Selecting pictures	21
Marking on pictures	22
Copying pictures.....	24
Moving pictures	25
Deleting pictures.....	26
Refreshing the display.....	26

Acquiring and displaying pictures

Acquiring pictures to PC.....	28
Displaying the acquired pictures in list view	31

Displaying pictures by recording date (Calendar format).....	32
Displaying pictures in enlarged view / playback the pictures	33
Playing back slide shows	34
Playing back the displayed pictures as a slide show	34
Creating a slide show from your favorite pictures	34
Opening the saved slide show	35
Settings for slide shows	36
Playing music files	38

Categorization

Flow of categorization.....	40
Details on categorization	41
Categorization by recording date.....	41
Categorization by recording scene	41
Categorization by number of persons (face detection)	42
Categorization by model name	43
Categorization by picture storage folder	43
Categorization by keywords	43
Categorization by face (face recognition)	44
Registering the face pictures	44
Execute the face check	45
Correcting the face check result	46
Changing the category name.....	47
Deleting categorization	48
Deleting pictures from categorization	48
Deleting a folder in a categorization	49

Deleting all categorizations..... 50

Process

Process flow.....52
 Resizing a picture.....54
 Converting picture format.....55
 Changing several picture file names at one time (Batch renaming)56
 Adding date and title information to a picture (Burn-in) ..58
 Changing the recording date.....59
 Creating still pictures from motion pictures60
 Rotating picture61

Retouch

Start and exit the retouch function.....63
 Window configuration for the retouch function64
 Correcting pictures or add effects66
 Saving retouched pictures.....69
 Retouch function menu70

Outputting

Output flow73
 Printing pictures.....74
 Attaching pictures to e-mail.....80
 Using a picture as wallpaper83
 Print settings (DPOF setting).....84
 Writing pictures onto a memory card.....85

Writing pictures to a CD or a DVD 87
 Upload picture to YouTube 89

Other settings

Customising picture display 92
 Changing order of picture (Sort)92
 Setting types of pictures (View type)93
 Registering application in Launcher..... 94
 Managing folders 96
 Properties of picture file 98
 Setting the operations at the time of start..... 100
 Changing the initial settings of acquisition..... 101
 Changing the initial settings of rotation..... 103

Convenient information

Tool bar..... 104
 Picture browser view setting area..... 104
 Status bar 105
 Output view..... 105
 Menu..... 106
 Context menu 110
 Context menu on the picture browser 110
 Context menu on the folder view 111
 Troubleshooting (Q&A) 112
 Glossary..... 114

Before Use

Introduction

■ About the contents of these instructions

- Please note that some of the explanation and screens covered in these operating instructions may differ from actual ones depending on the operating environment of your PC. Please be aware of this beforehand.
- No information is provided about basic PC operations and terms. Please refer to the relevant PC manual.
- The contents of these operating instructions may be subjected to changes without prior notice.
- Reproduction of these operating instructions in part or in full without permission is prohibited.
- The description of Windows® in these operating instructions is based on the Windows® XP screen.
- The English, French, German, Spanish and Simplified Chinese versions of this software are available to the OS of the corresponding languages. If you use an OS of another language, the English version of this software will be installed and become available.
- Pages to be referred to are shown as “⇒00”.
- In these operating instructions, PHOTOfunSTUDIO 3.0 is indicated as “PHOTOfunSTUDIO”.
- In these operating instructions, a memory card refers to an SD memory card, including the internal memory.
- The usable operation items on the menu and context menu depend on the operation status of PHOTOfunSTUDIO or status of the selection of the pictures. The unusable items are displayed in grey.

- Depending on the digital camera, some of the models do not have functions like [BABY] mode, [PET] mode, [TRAVEL DATE], [DATE STAMP], [TEXT STAMP], face categorization (face recognition), RAW file etc. mentioned in these instructions.

■ Precautions for use

- Do not pull out the connected cable of media (memory card and DVD, etc.) or digital camera when using it with this software.
There is a possibility that the software may not work normally or the data under transmission may be damaged.
- If the PHOTOfunSTUDIO cannot be started due to the lack of system resources, close other applications and then restart the PHOTOfunSTUDIO.
- If a large number of pictures is selected, it takes time to display as a thumbnail view.
- Depending on the environment used, the thumbnail might not be displayed normally, when more than a few hundred pictures are displayed.

■ About the network function

- This service is available as of November 1, 2008.
- In future, a guarantee of operation is not offered for any service or changes in the specifications of YouTube™. Please note that the contents of the service or the window which can be used might change at any time without prior notice.
- Do not upload the motion pictures protected by copyright except when permission has been obtained from the related right holder or when one has its rights.

About personal information

Personal information of name and age is included in the recorded picture when the name or birthday is set in [BABY] mode.

Since the face recognition function extracts the characteristics of the face to categorize, characteristics information of the face and the face picture will be saved in the PC.

In addition, personal information of name and age will be saved in the PC if name and birthday are set in the face picture.

■ Management and disclaimer of personal information

- Information including personal information may be altered or vanish due to erroneous operation, effect of static electricity, accident, malfunction or repair etc.

Please note in advance that Panasonic is not liable in any way for any direct or indirect damage or loss resulting from the alteration or vanishing of information including personal information.

■ Always erase personal information when it is transferred to another party or disposed of

- To protect personal information, always erase the information on the hard disk before transferring to another party or disposing of it.
- "Format" or "delete" using the PC will only modify the file management information, and it will not erase the data in the hard disk completely.

It is recommended that you physically destroy the hard disk or use the commercially available PC data deletion software to completely erase the data in the hard disk before transferring to another party or disposing of it.

- Microsoft[®], Windows[®], Windows Vista[®] and DirectX[®] are either registered trademarks or trademarks of Microsoft Corporation in the United States and/or other countries.
- IBM[®] and PC/AT are registered trademarks of International Business Machines Corporation of the U.S.
- Intel[®], Core[™] and Pentium[®] are registered trademarks or trademarks of Intel Corporation in the United States and other countries.
- QuickTime and the QuickTime logo are trademarks or registered trademarks of Apple, Inc., used under license therefrom.
- Microsoft product screen shot(s) reprinted with permission from Microsoft Corporation.
- Other names of systems and products mentioned in these instructions are usually the registered trademarks or trademarks of the manufacturers who developed the system or product concerned.

What can PHOTOfunSTUDIO do?

PHOTOfunSTUDIO allows you to easily acquire, display, categorize, process and output the picture on a PC.

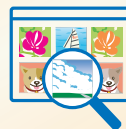
Acquire



You can acquire still pictures or motion pictures all at once.

Display

In thumbnail
Enlarged view
Slide show



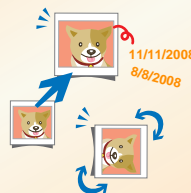
Categorize

By date
By recorded scene
By keyword, etc.



Process

Resize
Retouch, etc.



Output



Print



E-mail



CD/DVD

etc.

Supported picture files

Picture files which can be handled in PHOTOfunSTUDIO are in the following formats.

- ❖ Pictures recorded using this software or using the digital camera compatible with this software can be used. Pictures recorded by any other digital camera or other software might not operate normally.
- ❖ Moreover, pictures with the recording date between 1971 to 2037 can be handled without any problem.
- ❖ In a display function, all of the compatible files are displayed as a picture.
Pictures for a non-supported file are not displayed; instead they are displayed in thumbnail list by icons of a related application. (It cannot be displayed after expansion or in full-screen)
- ❖ When the size of the picture file is huge or the picture is in special format, the picture browser may not be changed to the Focus mode or the Full Screen mode.
- ❖ There are some functional limitations on compatible files like categorization, processing, retouch, output, etc. Please read the explanation of each function.

■ Still picture

● JPEG format

Extensions: .JPG, .JPEG, .JPE

- JPEG is an abbreviation of Joint Photographic Experts Group, and derives from the designation of the committee that has developed this compression format. This file format adopts the data compression method that thins out color data from a colored image to the extent that the human eye cannot discern.

● BMP format

Extensions: .BMP

- Some BMP files with special formats are excluded.
- BMP is an abbreviation of Bitmap, and an image format most commonly used in Windows®.

● TIFF format

Extensions: .TIF, .TIFF

- TIFF is an abbreviation of Tagged Image File Format.

■ Motion picture

In a list display, the representative picture in a motion picture (usually the first frame of a motion picture) is displayed.

● MOV motion picture

Extensions: .MOV

- The QuickTime motion picture files of Motion JPEG format are the target files.
- To play in this format, QuickTime is needed.

■ Other files

● RAW format

Extensions: .RAW, .RW2

- If JPEG image data for thumbnails is contained in a RAW file, a thumbnail is displayed in List mode. Any RAW files with no thumbnail information are indicated by the [RAW] icon.

System requirements

■ PHOTOfunSTUDIO 3.0

	Windows® 2000/XP	Windows Vista®
Personal computer	IBM® PC/AT compatible personal computer having Intel® Pentium® III 500 MHz or higher CPU (including compatible CPU)	IBM® PC/AT compatible personal computer having Intel® Pentium® III 800 MHz or higher CPU (including compatible CPU)
OS	Preinstalled Microsoft® Windows® 2000 Professional Microsoft® Windows® XP Professional Microsoft® Windows® XP Home Edition Microsoft® Windows Vista® Ultimate Microsoft® Windows Vista® Business Microsoft® Windows Vista® Home Premium Microsoft® Windows Vista® Home Basic	
RAM	256 MB or more	512 MB or more
Display	High Color (16 bit) or more (32 bit or more recommended) Desktop resolution of 1024×768 pixels or more (1280×1024 pixels or more recommended)	
	Graphics card complying with DirectX® 9.0c	Graphics card complying with DirectX® 10
	DirectDraw® overlay support PCI Express™ x 16 is recommended	
Free hard disk space	Ultra DMA-100 or higher 300 MB or more for installing software • When writing to DVD, twice the amount of free space as the disc is necessary.	

Necessary software	DirectX® 9.0c • If you install the software in a PC that is not compatible with DirectX® 9.0c, the PC may stop operating properly. If you are unsure if your PC is compatible, contact the maker. .NET framework 2.0	DirectX® 10
	QuickTime 6.1 or more (required for playback of MOV file) Internet Explorer 6.0 or more	
Sound	Windows compatible sound device	
Drive	CD-ROM drive (required for installing software) • A compatible drive and media are required for DVD writing.	
Interface	USB port (Hi-Speed USB (USB2.0))	
Other requirements	Mouse or equivalent pointing device	

- Even if the system requirements mentioned in these operating instructions are fulfilled, some personal computers cannot be used.
- The operation of this software will not be guaranteed when fonts other than English fonts are selected and used.
- This software may not run properly on user-built computers.
- Supplied CD-ROM is available for Windows only.
- This software cannot be used on Microsoft Windows® 3.1, Windows® 95, Windows® 98, Windows® 98SE, Windows® Me and Windows NT®.
- Operation is not guaranteed on Microsoft® Windows Vista® Enterprise, Windows® XP Media Center Edition, Tablet PC Edition and not compatible with 64 bit operation systems.
- Operation on an upgraded OS is not guaranteed.
- Operation on an OS other than the one pre-installed is not guaranteed.
- Multi-boot environment is not supported.

- This software does not support the multi-monitor environments.
- Only the system administrator can install or uninstall this software.
- Log on with an administrator account or standard user account before using this software. You cannot use this software with a guest account.
- If the settings for the size of characters in the screen settings dialog box in Windows is larger than the standard size, some buttons may be displayed off-screen and cannot be operated. In this case, restore the character size to standard size.
- When 2 or more USB devices are connected to a PC, or when devices are connected through USB hubs or by using extension cables, proper operation is not guaranteed.

Setting up

Connecting a digital camera to a PC

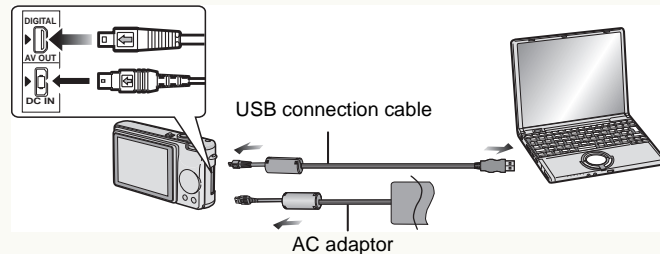
When a digital camera compatible with this software is connected, a picture can be acquired from the memory card of camera, or a picture can be recorded on a memory card from a PC.

- ❖ When you connect a digital camera to the PC, use batteries with sufficient battery power or the AC adaptors. If the remaining battery power is exhausted during data transfer, the recorded data may be damaged.

1 Prepare the digital camera.

- If you use the AC adaptor, connect it.
- Turn on the digital camera.


2 Connect the digital camera to the PC via the USB connection cable.



- Set the digital camera for connecting to a PC. (For details, refer to the operating instructions for the digital camera.)

3 Make sure that the digital camera is properly recognized by the PC.

You may judge that the digital camera is properly recognized if a [Removable Disk] is added in [My Computer].

- ❖ When recording to DVD/CD, use a DVD drive or CD drive.
- ❖ Data cannot be output from this software to some digital cameras. In such cases, please use SD card reader/writer etc.
- ❖ PHOTOfunSTUDIO or LUMIX Simple Viewer may start automatically. For details, refer to [⇒12](#).
- ❖ When removing the USB connection cable, double click the task tray [] icon after confirming that the digital camera is not accessing the card and click on [Stop] after selecting USB connection cable ([USB Mass Storage Device]) to remove the cable without any error messages.




- ❖ Do not operate the digital camera or disconnect the USB connection cable while transferring data in the digital camera. The software may not function correctly and damage the data being transferred.
- ❖ The shape of the terminal varies depending on the digital camera used. For details, refer to the operating instructions for the digital camera.

Starting PHOTOfunSTUDIO

- ❖ Before using for the first time, select [start] → [All Programs] → [Panasonic] → [PHOTOfunSTUDIO] → [Readme] and make sure to read the supplementary explanation and the latest information.

1 Select [start] → [All Programs] → [Panasonic] → [PHOTOfunSTUDIO] → [PHOTOfunSTUDIO].

- Or double-click the shortcut icon [] on the desktop.

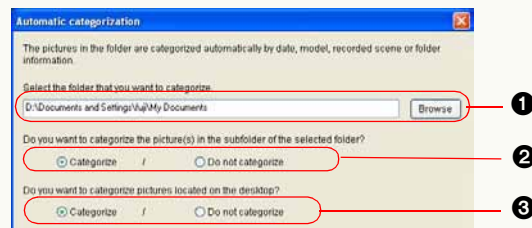


■ Automatic categorization of pictures

The [Automatic categorization] panel opens when PHOTOfunSTUDIO starts for the first time. Here, pictures saved on the PC are automatically categorized based on recording date, model of camera, recorded scene, picture storage folder, number of persons (face detection), face (face recognition), and then registered in PHOTOfunSTUDIO.

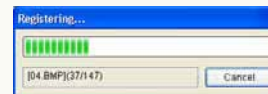
Important notice

When automatic categorization is executed, categorization data which has already been set for pictures in the specified folder will be deleted, and the picture files will be recategorized based on data contained within the picture files themselves. Be aware that categorization data for pictures categorized with user-selected keywords will be lost.



- 1 Click [Browse] to select the folder where pictures are saved on the PC.
- 2 Select whether pictures saved in the subfolder are categorized or not.
- 3 Select whether pictures on the desktop are categorized or not.

Click the [Start] button to start categorization.

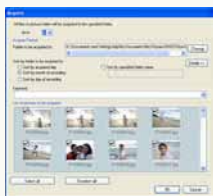


- Click [Cancel] to interrupt automatic categorization.
- ❖ PHOTOfunSTUDIO can be set to perform automatic categorization on every startup. (⇒100)
- ❖ For details on categorization, refer to ⇒41.

■ Auto start

The following windows may appear depending on the settings, when the memory card is set or the digital camera is connected to the PC.

- Acquisition window of PHOTOfunSTUDIO (⇒28)



When the auto start of PHOTOfunSTUDIO is enabled, this opens.*

- Window for LUMIX Simple Viewer



When the auto start of LUMIX Simple Viewer is enabled, this window opens.*

To use PHOTOfunSTUDIO, click [No] to close the window.

- Window for selecting the operation of Windows®



This is displayed depending on the Windows setting.

When the icon of PHOTOfunSTUDIO is selected and [OK] is clicked, the acquisition window of PHOTOfunSTUDIO is displayed.

* Auto start operation can be changed in Setting screen. (⇒100)

■ Exiting PHOTOfunSTUDIO

- 1 Select [File] → [Exit] on the menu.

- You may also exit the PHOTOfunSTUDIO by pressing the [Alt] key and the [F4] key at the same time when the picture browser is displayed.

Basic operations

The explanation of PHOTOfunSTUDIO window and basic operation method is given.

▷ Switching among display modes ⇒14

You can view in the following four modes.

-List mode ⇒15

-Focus mode ⇒17

-Full Screen mode ⇒18

-Calendar mode ⇒19

▷ Select pictures ⇒21

You can select one or more pictures.

▷ Mark pictures ⇒22

With the mark, you can select pictures in different folders at one time. Marked pictures become candidates for processing when you categorize, process or output pictures.

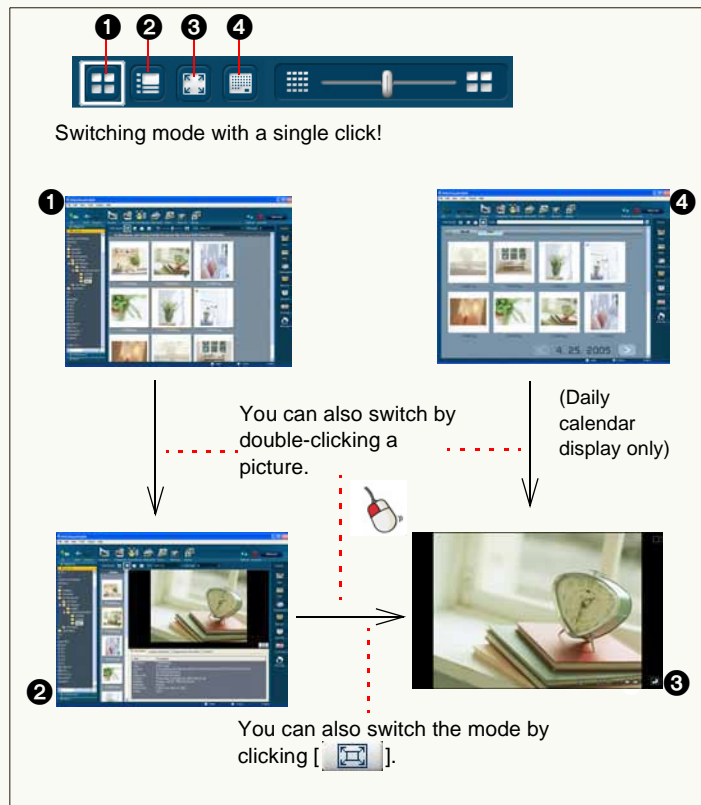
▷ Copy, move or delete pictures ⇒24 ⇒25 ⇒26

▷ Refresh the display ⇒26

The picture browser or folder view display can be updated manually.

Switching among display modes

With PHOTOfunSTUDIO, you can view in the following four modes.



1 List mode (⇒15)

Displays pictures with reduced ones (thumbnail) in list form.

- The thumbnail size can be changed in 5 levels.


2 Focus mode (⇒17)

A selected picture is displayed in the browser in enlarged view.

- Pictures information can also be displayed.
- Motion pictures can also be played.

3 Full Screen mode (⇒18)

A selected picture is enlarged to full screen.

- To return to the previous window (mode), press [Esc] key or click [].

4 Calendar Mode (⇒19)

Sorts pictures by recording date and then displays them in the format for Monthly Calendar mode or the Daily Calendar mode.

- The switching over of Calendar mode → Focus mode, Calendar mode (Monthly calendar display) → Full Screen mode cannot be done.

First select the List mode, then perform switching.

- Some part of the function from Calendar mode cannot be used. Operate it from List mode.

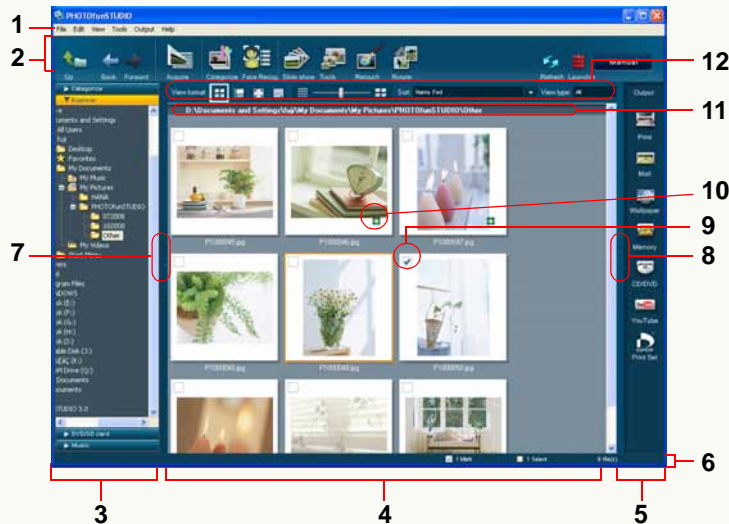
❖ You can also select each of the modes by selecting [View] → [View Format] from the menu, or by right-clicking in the picture browser and selecting [View Format].

❖ If you switch to the Focus mode or the Full Screen mode without selecting any picture, the first picture within the folder is displayed.

❖ For the file formats that can be displayed, consult “Supported picture files” (⇒7).

❖ If displays on the screen are corrupted, such as after starting the screen saver, update the display. (⇒26)

List (Thumbnail) mode

**1 Menu bar**

The operating items in PHOTOfunSTUDIO are arranged according to the classifications such as [File], [Edit], [View] and [Output]. (⇒106)

2 Tool bar

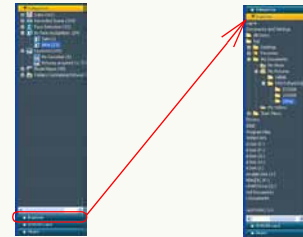
The operating items frequently used such as acquiring, categorizing, and processing are arranged with buttons to facilitate operations. (⇒104)

3 Folder view

Folders can be displayed by type ([Categorize], [Explorer], [DVD/SD card] and [Music]).

The pictures within the folder selected here are displayed in the picture browser.

- To open the window of any type, click its title bar (e.g., [Explorer]). The currently open window is closed when another window is opened.



- Nothing can be displayed in the picture browser when [My Computer] is selected on [Explorer].
- For the folder management method, see ⇒96.

- **[Categorize]** (⇒39)

- **[Explorer]**

All folders on the PC are displayed.

- **[DVD/SD card]**

Still picture folder within the memory card is displayed.

- The memory card being recorded to by compatible digital camera or this software is the target.

- **[Music]** (⇒38)

4 Picture browser

The pictures within the selected folder will be displayed as thumbnails.

- If there are many pictures in a folder, it may take time until they are thumbnail-displayed.
- An icon of related applications is displayed for non-compatible files; instead a picture is displayed.

5 Output view

Operation items concerned with picture output are placed as buttons. (⇒72)

- You can output in the following ways

- Printing	- Writing to a CD/DVD
- Attaching to E-mail	- YouTube
- Setting as Wallpaper	- Print Settings
- Writing to the memory card	

6 Status bar

The total number of files in the selected folder, the number of files selected and the number of files marked are displayed.

7 Folder view open/close button

The folder view can be opened or closed by clicking this button.

8 Output view open/close button


The output view can be opened or closed by clicking this button.


9 Check box

This is the check box for marking. This is selected when you click in the box and the picture becomes marked condition. (⇒22)

10 Identification icon

In the following cases, icons appear on the thumbnails.

: MOV motion pictures

: Pictures set to “My favorites” (⇒43)

: Pictures with title information*

: RAW files

11 Folder name display area

The name or the location (path) of the selected folder will be displayed.

12 Picture browser view setting area

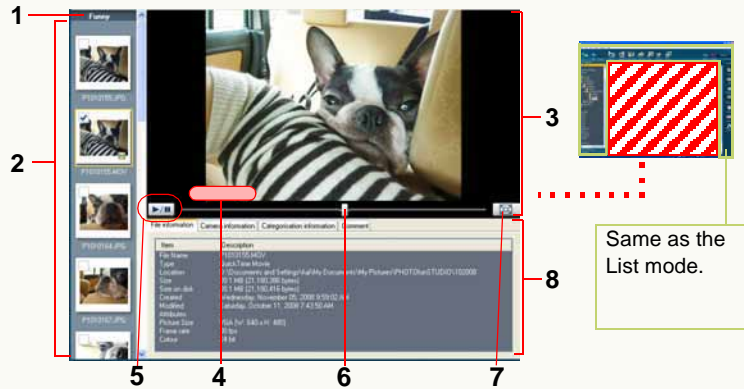
- Changing the view format (mode) (⇒14)

- Sorting pictures (⇒92)

- Narrowing types of pictures (⇒93)

* Information about the title set in the [TITLE EDIT] function, or the name set in the [BABY] mode, [PET] mode by digital camera.

Focus mode

**1 Folder name display area**

The name or the location (path) of the selected folder will be displayed.

2 Thumbnail display

The picture selected here appears in enlarged view.

3 Enlarged picture window**4 Title information display area**

Title information is displayed here, if it is included in the picture.

5 Motion picture PLAY/PAUSE button*

Each time this button is clicked, the motion picture switches between playback and pausing.

- Motion pictures automatically play when selected, and play repeatedly until pausing.

6 Motion picture playback slider*

The playback position can be changed by dragging this slider.

7 Full Screen mode select button

When clicking this button, a selected picture is enlarged to full screen.

- For motion pictures, playback starts automatically.

8 Information panel

Information about the picture is displayed.

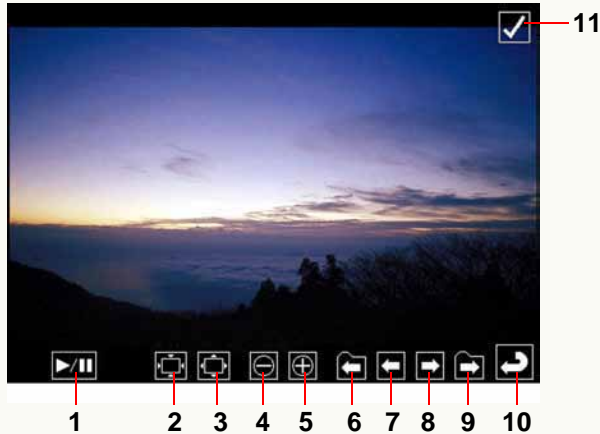
Clicking each information tab switches the contents displayed.

- The contents displayed are the same as those on the Properties window. (⇒98)

* Displayed only when a motion picture is selected.

- ❖ When playing motion pictures, the pictures and/or voice may be interrupted depending on the performance of your PC.

Full Screen mode

**1 Motion picture PLAY/PAUSE button***

Each time this button is clicked, the motion picture switches between playback and pausing.

- Motion pictures automatically play, and play repeatedly until pausing.

2 Restores the picture to the original size.**3 Fits to the window.****4 Zoom out****5 Zoom in****6 To the first picture in the previous folder.**

(Displayed only when two or more folders are selected.)

7 To the previous picture.**8 To the next picture.****9 To the first picture in the next folder.**

(Displayed only when two or more folders are selected.)

10 Returns to the previous window (mode).**11 Check box**

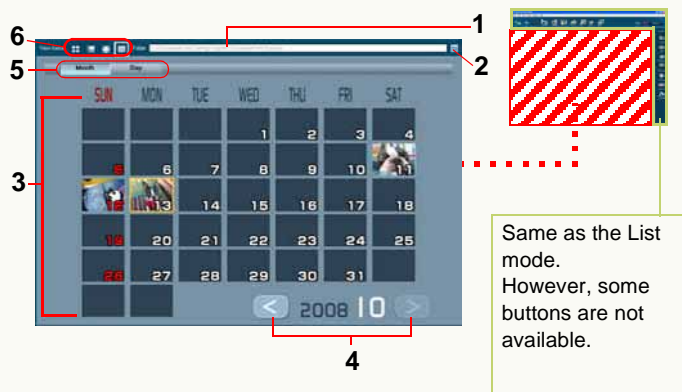
Sets/Cancels mark on the picture. (⇒23)

* Displayed only when a motion picture is selected.

- ❖ Only available buttons can be displayed. When the mouse cursor is not operated, the buttons disappear.
- ❖ When the whole of the picture is not displayed, you can move the position of the picture by dragging it with a mouse. (For still picture)
- ❖ When playing motion pictures, the pictures and/or voice may be interrupted depending on the performance of your PC.
- ❖ Depending on the picture, a black band may appear around it.
- ❖ Pausing playback and switching to the original mode while motion pictures are playing back in Full Screen mode may result in audio being output momentarily. In that case, install QuickTime from the install CD-ROM for this software.

Calendar mode

Monthly calendar display



1 Folder name display area

The location (path) of selected folder will be displayed.

- The [My pictures] ([Pictures]) folders are selected in the default setting.

2 Folder change button

When clicked, the folder selection window is displayed for changing the folder.

3 Calendar display area

Pictures in the selected folder (including pictures in the sub folders) are sorted by recording date according to the Exif information (⇒114) and displayed in thumbnail view on the calendar. Double-click the date displayed in

thumbnail view to switch to the daily calendar display (⇒20), and display pictures recorded on that day.

- If there are two or more pictures recorded on the same day, the latest picture will be used in thumbnail view.
- Pictures with no recording date in Exif will be sorted according to the date the file was updated.

4 Month back/forward button

Click the [<] button to display the previous month, and click the [>] button to display the next month; however, a month with no picture to display will be skipped.

5 Month/Day button

Select a date with pictures in the calendar display area and click [Day] to switch the window to the daily calendar display (⇒20).

6 Picture browser display setting area

You can change the display format (mode). (⇒14)

■ Daily calendar display



- ❖ Only pictures with a date between 1971 to 2037 can be displayed in calendar mode correctly. Pictures that were recorded/updated outside of this range will be displayed collectively on the last page. (The year and date will be displayed with [-])
- ❖ Since pictures are sorted according to the date when the file is first created or updated with the calendar display function on the digital camera, the same pictures may be displayed with a different date in PHOTOfunSTUDIO.

1 Picture browser

Pictures recorded on the selected day will be displayed in thumbnail view. You can select and mark pictures just like in List mode.

Double-click a picture to enlarge it to Full screen mode.

2 Day back/forward button

Click the [<] button to display the previous day, and click the [>] button to display the next day; however, a day with no picture to display will be skipped.

3 Month/Day button

Click [Month] to switch the window to the monthly calendar display. (⇒19)

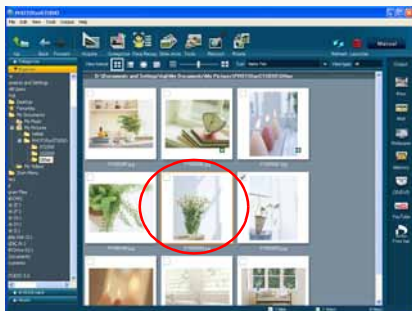
4 Picture browser display setting area

You can change the display format (mode). (⇒14)

Selecting pictures

- ❖ Pictures cannot be selected while in the monthly calendar display in the Calendar mode. Double-click a desired date to switch the window to the daily calendar display.

1 Click a thumbnail of the picture to be selected on the picture browser.



Clicked picture is enclosed by a frame and the picture is selected.

● To select two or more pictures

Click the pictures to be selected while holding down the [Ctrl] key.

● To select two or more successive pictures

Select the first picture, then hold down the [Shift] key while you select the last picture.

● To select all displayed pictures

Select [Edit] → [Select All] from the menu, or press the [A] key while holding down the [Ctrl] key after left-clicking the picture browser.

● To invert the selection

Select [Edit] → [Invert Selection] from the menu. The selected pictures will be deselected and the deselected pictures will be selected.

● To deselect pictures

Select [Edit] → [Deselect All] from the menu or click anywhere in the picture browser other than the thumbnails.

■ In Focus mode and Full Screen mode

You can select only one picture in Focus mode. When in the Full Screen mode, you cannot bring any picture into selected state.

To select multiple pictures in the Focus mode or select pictures in the Full Screen mode, mark them. (⇒23)

Marking on pictures

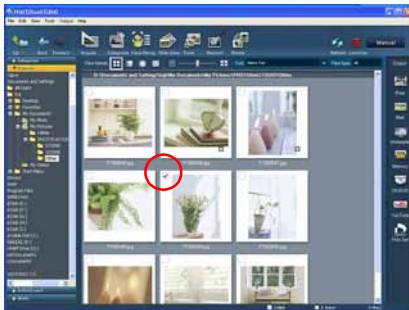
With the mark, you can select pictures in different folders at one time.

The marks are kept until PHOTOfunSTUDIO is closed unless you cancel them.

Moreover, marked pictures become candidates for processing when you categorize, process or output pictures.

- ❖ The mark function cannot be used for operations such as Cut and Delete. Select files to execute these operations.
- ❖ It is impossible to mark pictures in the monthly calendar display in the Calendar mode. Double-click a desired date to switch the window to the daily calendar display.

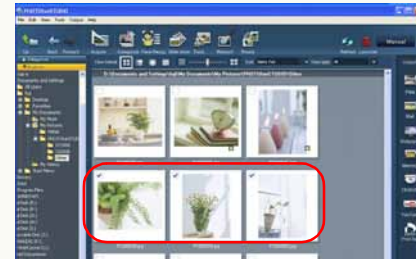
- 1 **Click the check box on the picture you want to mark on the picture browser.**



The check box is selected and the picture is marked.

● Marking multiple pictures

Click the check box on the pictures you want to mark by turns.



- You can also mark multiple pictures by selecting multiple pictures you want to mark and then clicking the check box of any 1 picture.





● Canceling all marks

- Select [Edit] → [Cancel all marks] from the menu.
- Right-click on the picture browser and select [Cancel all marks] from the context menu.
- ❖ When [Marked picture] is selected when categorizing, processing or outputting etc., the marked pictures that are not displayed in picture browser are also processed.

■ Switching marks with [Ctrl] key + [M] key

If you press the [M] key while holding down the [Ctrl] key with the picture selected, marks on the selected pictures are alternatively switched.

When the conditions of the marks on the selected multiple pictures are different, all of the selected pictures follow the condition of the mark on the picture selected last.

<p>1 Initial state.</p> 	<p>Only the picture on the center is marked.</p>
<p>2 Select the picture on the center.</p> 	
<p>3 Select the picture on the left.</p>  <p>• How to select multiple pictures: ⇒21</p>	
<p>4 Press [Ctrl] and [M] key.</p> 	<p>The picture on the left is marked. Along with it, the picture on the center is also marked.</p>

5 Press [Ctrl] and [M] key again.



Marks on both pictures are canceled.

6 Press [Ctrl] and [M] key once more.



Both pictures are marked again.

■ Setting/Canceling marks in Focus mode

In Focus mode, click the check box on any thumbnail picture to set/cancel the mark.



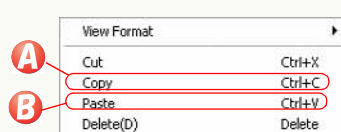
■ Setting/Canceling marks in Full Screen mode

When in the Full Screen mode, click the check box at the top right corner to set or cancel the mark.

Copying pictures

- ❖ Use output function for copying to memory card, DVD, CD etc. (⇒72)

- 1 Select a picture to be copied in the picture browser.
- 2 Right-click the picture and select **A**.



- 3 Open the copy destination folder, right click on the picture browser and select **B**.

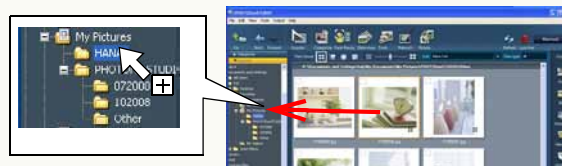
- You cannot copy any picture into [Categorize].
- When you apply this operation to a picture in the [Categorize], its registration itself is also copied.

■ Copying using Menu

- 1) Select a picture to be copied in the picture browser.
- 2) Select [Edit] → [Copy] from the menu.
- 3) Open a target folder and select [Edit] → [Paste] from the menu.

■ Copying by dragging and dropping

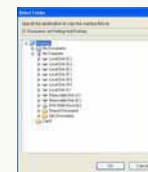
In the case of the List mode or the Focus mode, pictures can be copied by dragging the desired picture while pressing the [Ctrl] key on the picture browser and then dropping it into the destination folder in the folder view.



- When you copy a picture to a folder in a different drive, you can copy it by simply dragging and dropping it into the folder without holding down the [Ctrl] key.

■ To copy marked pictures

- 1) Select [Edit] → [Copying marked files] from the menu.
The folder selection window will appear.
- 2) Select the destination folder and click [OK].



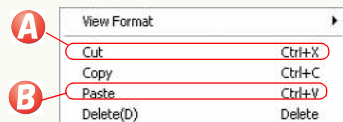
- ❖ Update the display when operation result is not reflected. (⇒26)

Moving pictures

❖ When the copy source or destination is memory card, DVD or CD, pictures cannot be moved depending on the media type.

1 Select a picture to be moved in the picture browser.

2 Right-click the picture and select **A**.



3 Open the move destination folder, right click on picture browser and then select **B**.

- You cannot move any picture into the [Categorize].
- When you apply this operation to pictures in the [Categorize], the original pictures are moved.

■ Moving using Menu

1) Select a picture to be moved in the picture browser.

2) Select [Edit] → [Cut] from the menu.

3) Open a target folder and select [Edit] → [Paste] from the menu.

■ Moving by dragging and dropping

In the case of the List mode or the Focus mode, pictures can be moved by dragging the desired picture on the picture browser and then dropping it into the destination folder in the folder view.

- When you move a picture to a folder in a different drive, hold down the [Shift] key while you drag and drop it into the folder. If you do not hold the [Shift] key while you drag and drop it, the picture will be copied, not moved.

■ To move marked pictures

1) Select [Edit] → [Moving marked files] from the menu.

The folder selection window will appear.

2) Select the destination folder and click [OK].

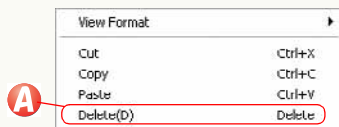


- ❖ Update the display when operation result is not reflected. (⇒26)

Deleting pictures

❖ In the case of memory card, DVD or CD, pictures cannot be deleted depending on the media type.

- 1 Select a picture to be deleted in the picture browser.
- 2 Right-click the picture and select **A**.



The confirmation message will be displayed. Select [Yes] to delete the picture.

- You may also delete the picture by pressing the [Delete] key while the picture is selected.
- If you delete pictures in the [Categorize], the pictures will be deleted only from the registration. The original pictures themselves will not be deleted.

■ Deleting using Menu

- 1) Select a picture to be deleted in the picture browser.
- 2) Select [File] → [Delete] from the menu.
The confirmation message will be displayed. Select [Yes] to delete the picture.

❖ Update the display when operation result is not reflected. (⇒26)

Refreshing the display

Update the display manually, when the operation result after editing the picture is not reflected in picture browser or folder view.

- 1 Click .

- The display is also refreshed by pressing [F5] key or selecting [View] → [Refresh] from the menu.

- ❖ When the operations to the files and folders performed on the software except PHOTOfunSTUDIO are not reflected on the picture browser or the folder view, refresh the display.
- ❖ If the latest display does not appear after replacing the media or reconnecting the digital camera, update the display.

Acquiring and displaying pictures

- ❖ Pictures that can be acquired or displayed are pictures in a memory card recorded using this software or a digital camera compatible with this software.
Pictures recorded with other digital cameras or other software might not be acquired, output or played back with this software.
- ❖ Moreover, pictures with a recording date between 1971 to 2037 can be acquired without any problem.

▷ Acquiring pictures to PC ⇒28

Pictures from memory card can be acquired.

▷ Displaying the acquired pictures in list view ⇒31

Acquired pictures can be displayed in a list by the picture browser.

▷ Displaying pictures by recording date (calendar format) ⇒32

Pictures can be displayed by sorting in calendar format based on their recording date.

▷ Displaying pictures in enlarged view / play back the pictures ⇒33

Pictures can be displayed in enlarged view or full screen view. Motion pictures can be played back.

▷ Playing back slide shows ⇒34

Slide shows can playback using the acquired pictures.

You can also set desired switching effect and music to the slide shows.

▷ Playing music files ⇒38

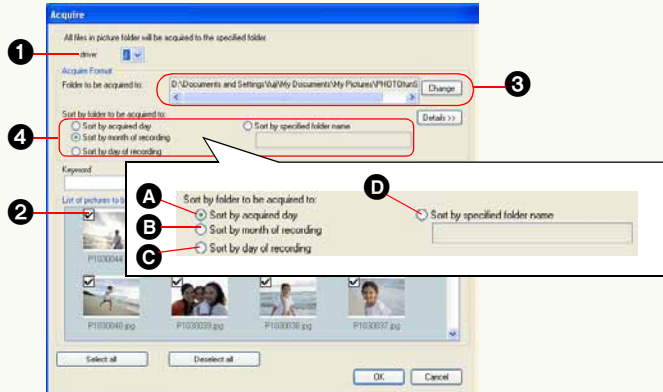
PHOTOfunSTUDIO comprises a function to access and play the music files saved in the PC. It is very convenient while previewing the music files used in slide show.

Acquiring pictures to PC

❖ Set the memory card of acquisition source.

1 Click [].

2 Set the acquisition method.



- 1** Select the drive of acquisition source.
- 2** Put a mark on the picture to be acquired.
 - Right-click the thumbnail of any picture and select [Properties], and you can see the picture information.
- 3** Check the acquisition destination folder.
 - When you change the folder to save the acquired pictures, click [Change] to select the desired folder.
- 4** Select the distribution condition.
 - Pictures are divided and saved in subfolder depending

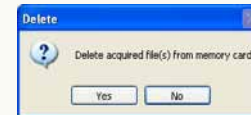
on the selected condition.

- A** Pictures will be saved in the subfolder of the picture acquisition date (today's date).
- B** Pictures will be divided and saved depending on the picture recording month.
- C** Pictures will be divided and saved depending on the picture recording date.
- D** Pictures will be saved in the subfolder of entered name.

3 Click [OK].

Picture will be acquired according to the setting.

- The following message will be displayed after the acquisition from memory card is completed.

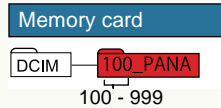


The picture file saved to the PC is deleted from the memory card, if [Yes] is clicked.

Pictures will remain in memory card, if [No] is clicked.

- ❖ If the message [Insert a memory card containing pictures taken by a digital still camera.] appears, check the following:
 - Whether the device at acquisition source is firmly connected.
 - Whether the power supply of the device is switched ON.
 - When acquiring from digital camera, whether the setting is done for connection with PC. (For details, refer to the operating instructions for the digital camera.)

- Whether the following folders are present.

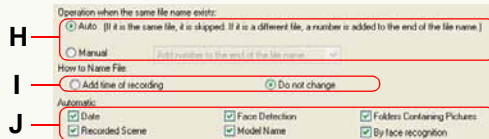
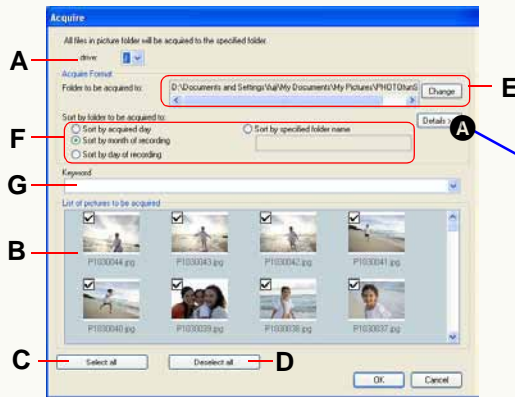


When there is no folder like in the figure, it is not recognized as memory card which can be acquired. When inserted in digital camera and recording is done, folder gets created and becomes recognizable.

(However, what is being acquired is the file in the folder shown in red only.)

- ❖ Depending on the digital camera, the picture from the memory card might not be deleted after acquisition is completed.

■ Details of acquisition window



● Setting of acquisition source

- A. Select the drive of acquisition source.
- B. Pictures of the acquisition source are displayed.
Put a mark on picture to be acquired.
- C. Mark will put on all of the pictures.
- D. Mark on all of the pictures will be canceled.

● Setting of acquisition destination

E. Confirm the acquisition destination.

- The acquisition destination folder is [PHOTOfunSTUDIO] by default.

Folder path

(when Windows® is installed on drive C):


C:\Documents and Settings\<(User Name)\
My Documents\My Pictures\PHOTOfunSTUDIO
(Windows® 2000/XP)

C:\Users\<(User Name)\Pictures\PHOTOfunSTUDIO
(Windows Vista®)

F. Set the distribution condition.

● Key word setting

G. When key word is set, the acquired pictures can be registered in key word categorization. (⇒43)

- Either enter directly or select from list by clicking on .

● Detailed setting

When **A** is clicked, the following setting items will be displayed.

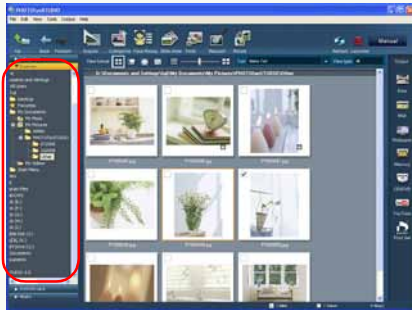
- Refer to ⇒101 – 102 for these settings.

- H. Method of handling files with the same file name
- I. File naming method
- J. Setting automatic categorization

Displaying the acquired pictures in list view

Let's display the acquired picture in a picture browser.

- 1 Click [Explorer] title bar in the folder view to open [Explorer] window.



- 2 Click the folder where acquired pictures are saved.

Pictures are displayed in a list on the picture browser.

- For details about various kinds of icons to display on thumbnails, refer to ⇒16.
- If [Explorer] is not displayed, select [View] → [Folder] → [Explorer] from the menu.
- If the whole folder view is not displayed, click folder view open/close button to display it. (⇒15)
- To display the folder (subfolder) in the selected folder, put a check mark on [View] → [View subfolder] from the menu.

- ❖ The acquisition destination folder is [PHOTOfunSTUDIO] by default.

Folder path (when Windows® is installed on drive C):
 C:\Documents and Settings\ (User Name)\My Documents\
 My Pictures\PHOTOfunSTUDIO (Windows® 2000/XP)
 C:\Users\ (User Name)\Pictures\PHOTOfunSTUDIO
 (Windows Vista®)

Displaying pictures by recording date (Calendar format)

- 1 Select Calendar mode from [View format].



Pictures in the [My pictures] ([Pictures]) folder (including pictures in the sub folders) are sorted by recording date according to the Exif information (⇒ 114) and displayed in the calendar.



- The first displayed page is the latest month with an picture. If there are pictures which cannot be arranged in order, they are set in a page, and that page is displayed.
- If there are two or more pictures recorded on the same day, the latest picture will be used in thumbnail view.
- Pictures with no recording date in Exif will be sorted according to the date the file was updated.
- When you want to display pictures from different folder, select the folder using folder selection button (A).

- 2 Click the [<] or [>] button to display a specific month.

- 3 Double-click the thumbnail of the date to be displayed.

The calendar will switch to the daily calendar display and a list of the pictures recorded on that day will be displayed.



- You can switch to the daily calendar display by selecting the thumbnail view and clicking the [Day] button on the top of the calendar.
- ❖ Only pictures with a date between 1971 to 2037 can be displayed in calendar mode correctly. Pictures that were recorded/updated outside of this range will be displayed collectively on the last page. (The year and date will be displayed with [-])
- ❖ Since pictures are sorted according to the date when the file is first created or updated with the calendar display function on the digital camera, the same pictures may be displayed with a different date in PHOTOfunSTUDIO.

Displaying pictures in enlarged view / playback the pictures

- 1 Select a picture in picture browser.
- 2 Select Focus mode (A) or Full Screen mode (B) from [View format].



The picture will be displayed in enlarged view and the motion picture will be played back.

- ❖ The switching over of Calendar mode → Focus mode, Calendar mode (Monthly calendar display) → Full Screen mode cannot be done.
First select the List mode, then perform switching.

- **Pictures can also be enlarged by the following methods.**
 - Double-click a picture.
 - Right-click a picture and select [Focus] or [Full screen] from [View Format].
 - Select a picture and select [View] → [View Format] → [Focus] or [Full screen] from the menu.

- **To return from the Full Screen mode to the previous window (mode):**
 - Press [Esc] key.
 - Double-click the picture.
 - Click [↩] on the screen.

Playing back slide shows

- ❖ Motion pictures cannot be used in the slide show.
- ❖ The number of pictures in any one slide show should be restricted to 1000 or fewer. When there are more than 1000, the pictures may not play back correctly.

Playing back the displayed pictures as a slide show

1 Displaying the pictures to be played as a slide show in picture browser.

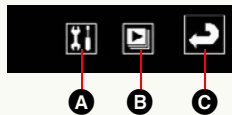
2 Select **A**.



Slide show will start.

■ Operation handling during slide show

If the mouse is moved during the slide show, the operation button is displayed at the bottom of the window.



- A** Click this button to display the settings window for the slide show. (⇒36)
- B** Clicking makes the slide show playback / stop.
- C** Click this button to return to previous window and terminate the slide show.

Creating a slide show from your favorite pictures

You can make a slide show according to your favorite pictures, music or image effects. The created slide show can be saved as a slide show file.

1 Put a mark on the pictures you want to use in slide show. (⇒22)

- Adding a mark is not necessary when you want to use all of the pictures from the selected folder.

2 Select **A**.

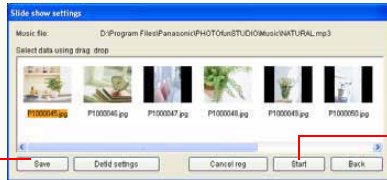


3 Select the target and click [OK].



- A** The marked pictures
- B** All pictures in the folder

4 Adding, deleting and rearranging pictures using the play list window.



- See ⇒37 for more details of these operations.
- Click [DefId settings] to set picture effects, music and other settings relating to the slide show. (⇒36)

5 Click **B** to playback.

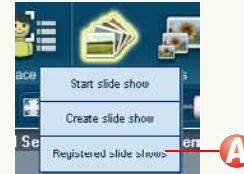
Slide show will be played back.

6 Click **C** to save.

The window for saving will be displayed, so enter the file name and click [Save].

Opening the saved slide show

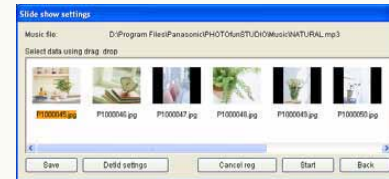
1 Select **A**.



Saved slide shows will be displayed.

2 Click [Open] by selecting file to be opened.

3 Perform desired operations using the play list window. (⇒37)

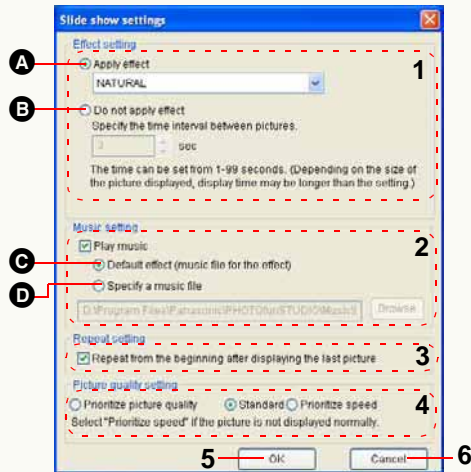


Settings for slide shows

■ Detailed settings for slide shows

Click **[F5]** during the slide show to open the [Slide show settings] window.

- ❖ These settings can also be changed from the menu. Display [Settings] window by selecting [Tools] → [Settings], click [Slide show] tab and perform settings.



1 Effects settings

- A** Selected picture effects are used while switching pictures.
- B** The pictures are switched over at regular intervals without using picture effects. Set the number of seconds by clicking **[↓]**.

2 Music settings

Background music can be added to a slide show by

putting a check mark on .

- C** Music matched with the settings of switching effects is selected automatically.
- D** Click [Browse] to select a music file.
 - Files in M4A, MP3, WMA or WAV format can be used. However, some files may not be played back.

3 Settings for repeat operations

If a check mark is put on , the slide show will be replayed from start after picture reaches the end.

4 Setting picture quality

Selects picture quality of the slide show to be displayed.

- Recommended system requirements are as follows:

[Prioritize picture quality]	Core™2 Duo 2.4 GHz or higher
[Standard]	Pentium® 4 1.6 GHz or higher
[Prioritize speed]	Pentium® III 800 MHz or higher

- Please note that depending on the system environment and usage status it may not play back normally even with the recommended systems. For example:
 - When this software is being used while other software is operating
 - When using a PC equipped with a video card that shares the video memory and main memory
 - When the free space on the system drive or temporary file storage drive is extremely low

5 [OK] button

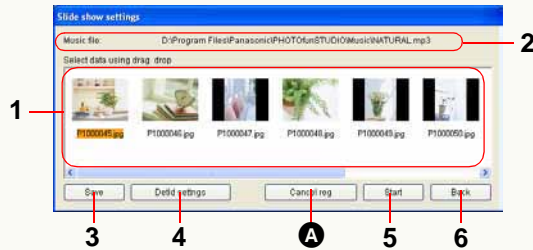
Window will be closed after saving the changes.

6 [Cancel] button

Window will be closed after canceling the changes.

■ Operations on the play list window

Add/delete/sort operations of the pictures used in the play list window can be executed.



1 Play list

The pictures used in slide show are displayed in the sequence of play back.

● Switching of picture sequence

Change the sequence of the pictures by dragging and dropping in the play list.

● Adding the pictures

Drag and drop the pictures to be added from the picture browser in the play list.

● Deleting the pictures

Click on the [Cancel reg.] button (A) after selecting unwanted pictures from the play list.
(The picture file itself is not deleted.)

2 Music files

Music files used in slide show are displayed.

To change the music, click on the [Music] from the folder view and drag and drop the desired tune to the play list window from the music browser.

3 [Save] button

The slide show under creation can be saved by giving it a name by clicking this button. Music and picture effect settings can also be saved together.

4 [Detail settings] button

Click this button to open the detailed settings window (⇒36). Picture effect, music and other settings can be made using the detailed settings window.

5 [Start] button

The slide show under creation can be played by clicking on this button.

6 [Back] button

Click this button to exit slide show creation and return to the previous window.

Playing music files

- ❖ Supported file format:
M4A, MP3, WMA, WAV

1 Click [Music] title bar in the folder view.



Music folder tree will be displayed.

2 Select the folder to be viewed.

The music file list in the selected folder is displayed in the browser.

3 Click on play button [▶] of music file you want to listen to.

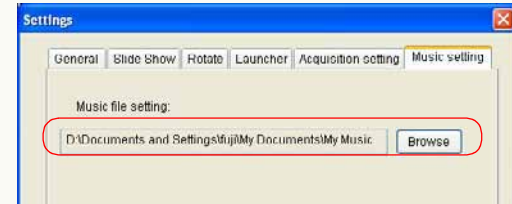
Music file will be played.

The play button changes to [■] when the music is playing. Click to stop the music.

- ❖ Music files only can be accessed or played.
Music files cannot be copied, deleted or moved in PHOTOfunSTUDIO.

■ To change the location (path) of the music folder

Display the [Settings] window by selecting the [Tools] → [Settings] from the menu, and click on the [Music setting] tab.



Folder tree from the hard disk will be displayed by clicking on [Browse]. Select the folder in which music files are saved and click [OK].

Categorization

The PHOTOfunSTUDIO has functions to categorize acquired pictures in accordance with a specified condition and to group them.

The pictures categorized are registered in the [Categorize] to be easily viewed in a list form. When the number of recorded pictures increases, it is hard to find pictures to be viewed. However, if the complete pictures are categorized, the target pictures will be found easily.

- ▷ Flow of categorization ⇒40
- ▷ Details on categorization ⇒41
 - Categorization by recording date ⇒41
 - Categorization by recording scene ⇒41*1
 - Categorization by number of persons (face detection) ⇒42*1
 - Categorization by model name ⇒43*1
 - Categorization by picture storage folder ⇒43
 - Categorization by keywords ⇒43
- ▷ Categorization by face (face recognition) ⇒44
- ▷ Changing the categorization name ⇒47
- ▷ Deleting the categorization ⇒48

*1: It is compatible only with pictures with JPEG format or TIFF format that have Exif information.

- ❖ Up to 10,000 pictures can be categorized at one time.
However, depending on the amount of the memory installed in the PC, the number of pictures to be categorized may be restricted to less than 10,000.
- ❖ Pictures except those acquired in the PC (pictures in a CD-ROM, memory card, etc.) cannot be categorized. Categorize pictures after acquiring them on the hard disk of the PC.

Flow of categorization

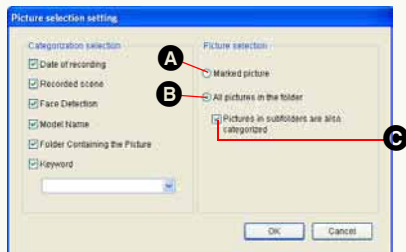
❖ Acquire pictures to be categorized in PC in advance. (⇒28)

1 Put a mark on the pictures to be categorized. (⇒22)

- Adding a mark is not necessary when you want to process all of the pictures from the selected folder.

2 Click [] on the tool bar.


3 Select the target.



- A** The marked pictures
- B** All pictures in the folder
 - The pictures in subfolders are also considered a target if **C** is selected.

4 Select a categorization condition.



- D** Categorization by recording date (⇒41)
- E** Categorization by recording scene (⇒41)
- F** Categorization by number of person (face detection) (⇒42)
- G** Categorization by model name (⇒43)
- H** Categorization by picture storage folder (⇒43)
- I** Categorization by keywords (⇒43)
 - Either enter directly or select from list by clicking on .
 - Up to 64 characters (single-byte) can be registered as the keyword.
 - The following characters cannot be used.
 \ ? / " ; : , < > ! * | ' ^ [] % _

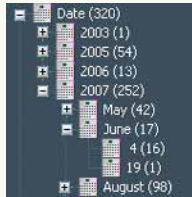
5 Click [OK].

- ❖ If you categorize many pictures at one time, it may take time to proceed with registration of the pictures to a database.

Details on categorization

Categorization by recording date

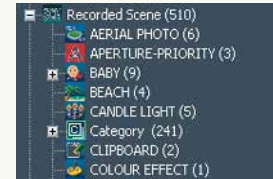
If you want to categorize the pictures by recording date, the year/month/day folders are created in [Categorize] – [Date] of the folder view and corresponding pictures are registered in it.



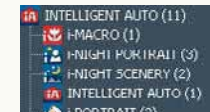
- ❖ When there is no information about the recording date on the picture, the date of update is replaced as the recording date.
- ❖ Pictures recorded by digital cameras made by other than Panasonic may not be categorized normally.
- ❖ You can properly categorize pictures with recording date from 1971 to 2037 by using this software.
- ❖ The pictures that could not be categorized are registered in [Keyword] folder of [Categorize] as [Pictures with no date].

Categorization by recording scene

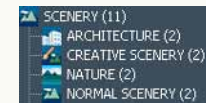
If you want to categorize the pictures based on recording scene, the folder for each scene mode is created in [Categorize] – [Recorded Scene] of the folder view and corresponding pictures are registered in it.



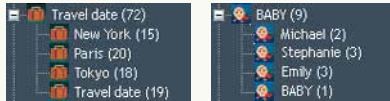
- ❖ The pictures that can be categorized are the pictures in JPEG or TIFF format with Exif that have scene information. MOV motion pictures will be categorized only in folders related to motion pictures.
- ❖ Pictures recorded in Intelligent Auto mode are categorized in subfolders of the respective scenes that are automatically identified in the [INTELLIGENT AUTO] folder.









- ❖ Pictures recorded in Advanced scene mode are categorized in subfolders by detailed scenes in the respective folders in [PORTRAIT], [SCENERY], [SPORTS], [NIGHT PORTRAIT], or [MACRO].







- ❖ Pictures categorized in [Travel date], [Pet mode] or [Baby mode] of [Keyword] in the PHOTOfunSTUDIO 1.4 or before are transferred to the respective folder in [Recorded Scene].
- ❖ For [Travel date], [PET] and [BABY], subfolders are created according to title information attached to the pictures, and pictures are categorized into each folder. Pictures with no title information are categorized into a subfolder named [Travel date], [PET] or [BABY].



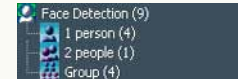
- ❖ In the [Category] folder, pictures are categorized in subfolders of the respective categories, similar to the [CATEGORY] function of LUMIX digital cameras.

Category	Scene modes
 PORTRAIT	[PORTRAIT], [i-PORTRAIT], [SOFT SKIN], [SELF PORTRAIT], [NIGHT PORTRAIT], [i-NIGHT PORTRAIT], [BABY]
 SCENERY	[SCENERY], [i-SCENERY], [SUNSET], [AERIAL PHOTO]
 NIGHT SCENERY	[NIGHT PORTRAIT], [i-NIGHT PORTRAIT], [NIGHT SCENERY], [i-NIGHT SCENERY], [STARRY SKY]
 EVENTS	[SPORTS], [PARTY], [CANDLE LIGHT], [PANNING], [FIREWORKS], [BEACH], [SNOW], [AERIAL PHOTO]
 BABY	[BABY]
 PET	[PET]

 FOOD	[FOOD]
 UNDER-WATER	[UNDERWATER]
 Travel date	[TRAVEL DATE]
 MOTION IMAGE	[MOTION PICTURE]

Categorization by number of persons (face detection)

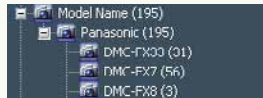
If you want to categorize the pictures based on face detection, the folders are created – based on the number of detected faces in [Categorize] – [Face Detection] of the folder view and corresponding pictures are registered.



- ❖ Only JPEG and TIFF pictures with Exif containing the face detection information by digital camera can be categorized.
- ❖ Pictures in which 3 or more faces are detected will be categorized as [Group] pictures.
- ❖ There may be cases where the count of number of persons whose face has been detected and count of actual number of persons who are in the picture does not match depending upon the recording conditions.

Categorization by model name

If you want to categorize the pictures by model, the folders based on the manufacturer's name or model name are created in [Categorize] – [Model Name] of the folder view and corresponding pictures are registered in it.



- ❖ Only JPEG and TIFF files with Exif information containing model name information can be categorized.

Categorization by picture storage folder

If you want to categorize the pictures based on the folders in which pictures are stored, the folder tree with pictures is displayed in [Categorize] – [Folders Containing Pictures] of the folder view. Picture storage destination can be easily accessed from this folder tree.



- ❖ The following operations are disabled in the folder tree for [Folders Containing Pictures]. Execute them in the folder tree in the [Explorer] window.
 - To change folder names
 - To move or copy pictures


Categorization by keywords

If you want to categorize the pictures based on keywords, the folders for individual keywords are created in [Categorize] – [Keyword] of the folder view.



- ❖ You can add two or more keywords to a picture. Pictures with two or more keywords are registered in each corresponding keyword folder redundantly.

■ When categorizing pictures by [My favorites]

If you enter [My favorites] as a keyword,  is placed onto the pictures just like those set to "FAVORITE" with a compatible digital camera.

- When outputting these pictures to the memory card and reproducing them with a compatible digital camera, "FAVORITE" icon is also displayed in the pictures on the digital camera. (Only for JPEG and TIFF files with Exif information)
- ❖ This is also applicable to the pictures set to "My favorite" on the simplified version of PHOTOfunSTUDIO, "LUMIX Simple Viewer".

Categorization by face (face recognition)

The pictures can be auto categorized by face based on the face pictures being registered in advance.

- ❖ However, if the pictures are categorized according to the face in the digital camera having face categorization function, they are automatically categorized while acquiring based on the categorization information being described in Exif information. (The face pictures set in digital camera will not be registered automatically.)

About the face recognition

Face recognition does not guarantee steady recognition even if the person is registered.

Also, it may not correctly recognize between parents and children, or brothers and sisters, with similar face characteristics.

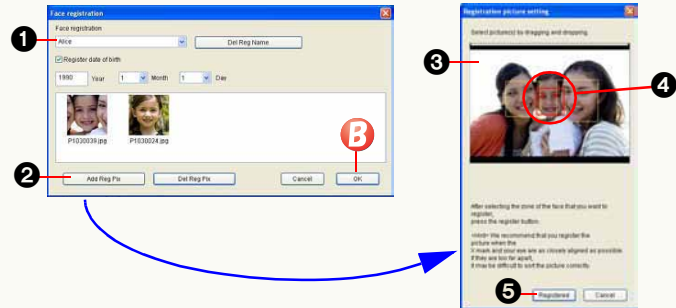
- ❖ The face of a subject other than a person (pets etc.) cannot be detected.
- ❖ Face recognition may not be performed at all or it may not recognize correctly in the following cases.
 - Face is not facing the camera
 - The face is at an incline
 - The face is extremely bright or dark
 - There are few shadows on the face
 - The face is blocked by sunglasses, glasses reflecting light, hair, a hat, etc.
 - The face is recorded in small size
 - When the face does not fit in the frame because it is too close or shifted to either side
 - The expression is greatly different
 - When the characteristics of the face changed due to aging

Registering the face pictures

- 1 Select **A**.



- 2 Register the face picture.



- 1 Enter a name.
 - Select it from list when picture is added to the existing name.
 - Maximum of 32 single byte characters can be entered.
 - Maximum 20 names can be registered.
- 2 Click to display the face selection window.
- 3 Drag and drop the picture from picture browser or Explorer.

- 4 Select the frame of the face to be registered and change it to red.
 - The face that is not enclosed by frame cannot be registered.
- 5 Click to register the face picture.
 - Maximum 5 face pictures can be registered.

3 Click **B**.

■ Details of face picture registration window



- **Registration of the individual name**
 - A. Enter or select a name.
 - B. Registration of the selected name will be deleted.
 - C. Birthdate can be registered by selecting.
 - By registering date of birth, the age can be displayed on the property window.
- **Registration of the face**
 - D. Registered picture will be displayed.
 - E. The face selection window will be displayed.
 - F. The registered picture which is selected will be deleted.

Execute the face check

- ❖ Pictures that already categorized by face will not be categorized again.

1 Put a mark on the pictures to be categorized. (⇒22)

- Adding a mark is not necessary when you want to process all of the pictures from the selected folder.

2 Select **A**.

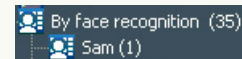


3 Select the target and click [OK].



- A The marked pictures
- B All pictures in the folder
 - The pictures in subfolders are also considered a target if C is selected.

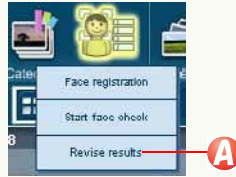
A folder for each individual name will be created in [Categorize] – [By face recognition] of folder view and corresponding pictures will be registered.



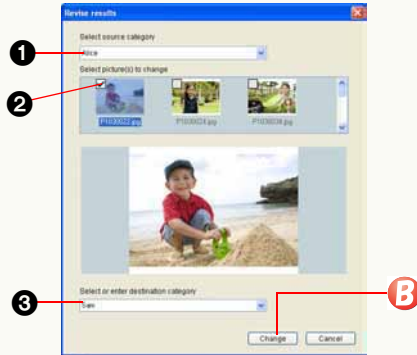
Correcting the face check result

If the result of face check is not correct, correct manually.

1 Select **A**.



2 Set the correction contents.



1 Select categorization source.

- The pictures deleted from the face categorization can be selected when [Finished deleting from category] is selected.

2 Put a mark on pictures which are to be categorized again.

- The enlarged face area will be displayed below after the picture is selected.

3 Select the categorization destination.

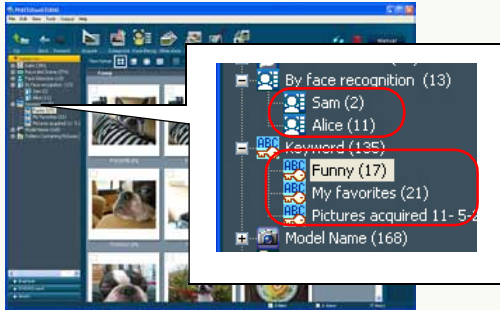
- If you want to create a new categorization destination, enter a name to be registered.
- When [Delete from category] is selected, picture will be deleted from categorization source. (The categorization of other people who are featured in the same picture is maintained.)

3 Click **B**.

Changing the category name

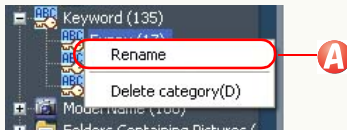
- ❖ The category names only from the [Keyword], [By face recognition] can be changed. (However, [My favorites] cannot be changed.)

1 Select a folder.



- You cannot select multiple folders.

2 Right-click to select **A**.



Now the folder name can be changed. Input a new name and then press [Enter] key.

- Up to 64 single-byte characters can be set as a key word and up to 32 single-byte characters can be set as an individual name.

- The following characters cannot be used for the folder name.

\ ? / " ; : , < > ! * | ' ^ [] % _

- If the existing category name is entered, the pictures in the selected folder will be integrated in the existing folder.

- You cannot change the folder name to the following names.

“Enter a keyword.”

Deleting categorization

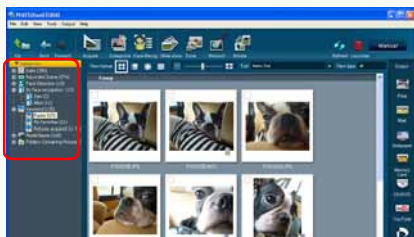
You can delete (cancel) pictures from the categorization and delete (cancel) one complete folder in the categorization. You can also delete all the categorizations at one time.

- ❖ The picture is deleted only from the registered categorization database, not deleted from the hard disk.

Deleting pictures from categorization

Pictures can be deleted from folders in each categorization.

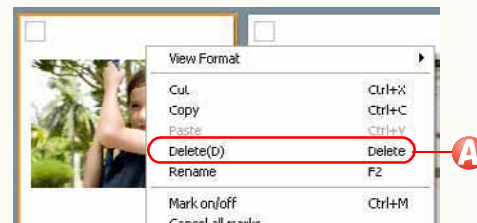
1 Select the categorization folder.



2 Select the pictures to be deleted.

- If you click pictures while holding down the [Ctrl] key, you can select multiple pictures.

3 Right-click to select **A**.



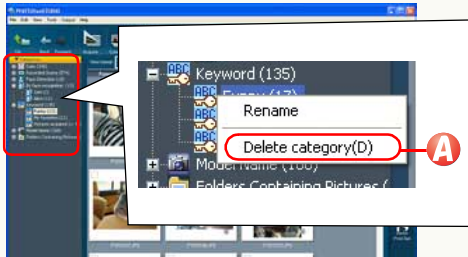
The confirmation message for deleting categorization information appears. Click [Yes] to delete pictures from the categorization.

- ❖ Update the display when operation result is not reflected. (⇒26)
- ❖ In the [Recorded Scene] category, if one picture is registered in multiple folders, and any one of the pictures is deleted, all registrations of that picture will be removed.
- ❖ When the original picture is deleted, the picture in the [Categorize] is also deleted.

Deleting a folder in a categorization

You can delete unnecessary categorization folder.

1 Select a categorization folder to be deleted.



- You cannot select the whole categorizations or two or more folders in a categorization. However, if the categorizations are hierarchized, all folders in the lower hierarchy below the selected folder are selected. For example, in the case of [Date], selecting the “Month” folder selects all “Day” items in the sub folder and selecting the “Year” folder selects all “Month” and “Day” items in the sub folder.

2 Right-click to select **A**.

The confirmation message for deleting categorization appears. If you click [Yes], the selected categorization folders are deleted.

- ❖ You cannot delete [My favorites] folder in [Keyword] categorization.

■ To delete the whole of one categorization

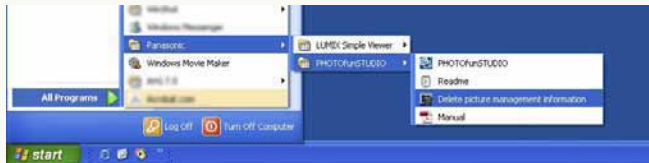
Repeat the deletion procedure for each categorization folders. When all the folders in the categorization are deleted, the categorization in [Categorize] will be deleted.

Deleting all categorizations

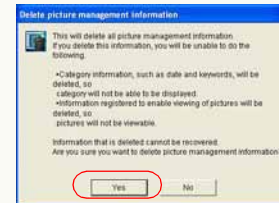
You can delete all the categorizations at one time. When you want to delete the whole categorization status because it is erroneous, PHOTOfunSTUDIO is reinstalled (the picture categorization information was not deleted when PHOTOfunSTUDIO was uninstalled), etc., delete it using the following procedure.

- ❖ The categorization information and the comment information (⇒99) are deleted, however, the original picture files cannot be deleted.
- ❖ Delete categorizations when PHOTOfunSTUDIO is closed.

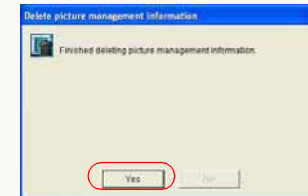
1 Select [start] → [All Programs] → [Panasonic] → [PHOTOfunSTUDIO] → [Delete picture management information].



2 Click [Yes].



3 Click [Yes].



Process

The PHOTOfunSTUDIO allows a picture to be processed.

- ❖ When you process pictures, it is recommended to save the pictures on the PC beforehand.
- ▷ Process flow ⇒52
- ▷ To resize a picture ⇒54
 - You can reduce the size of pictures and decrease the file size by changing the data compression ratio of JPEG.
- ▷ To convert the format of a picture ⇒55
 - You can convert pictures into BMP (bitmap), TIFF or JPEG format.
- ▷ To change the file names of pictures at one time ⇒56
 - The file name of the pictures can be changed automatically in sequential order.
- ▷ To add date and title information on pictures ⇒58
 - The recording date and title information is burned into a picture.
- ▷ To change the recording date of a picture ⇒59
 - You can correct recording date information for pictures which have incorrect recording dates (because you forgot the clock setting of the digital camera in recording, etc.).
- ▷ To create still pictures from motion pictures ⇒60
 - You can divide motion pictures into frames of a certain time length and save your favourite frames as still pictures (in JPEG format of Exif).
- ▷ To rotate a picture ⇒61
- ❖ Update the display when operation result is not reflected. (⇒26)

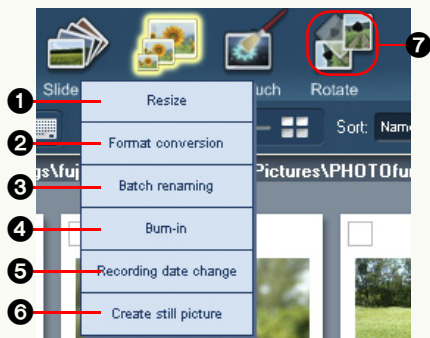
Process flow

You can process pictures as follows.

1 Put a mark on the pictures to be processed. (⇒22)

- Adding a mark is not necessary when you want to use all of the pictures from the selected folder.
- For the file format that can be processed, refer to the page corresponding to each processing.

2 Select a desired process type.



- | | |
|---|---|
| <ul style="list-style-type: none"> ① Changing the picture size ② Converting the picture format ③ Changing several file names at one time ④ Adding date and title information to a picture | <ul style="list-style-type: none"> ⑤ Changing the recording date ⑥ Creating still pictures from motion pictures ⑦ Rotation |
|---|---|

3 Select the target and click [OK].



A. The marked pictures

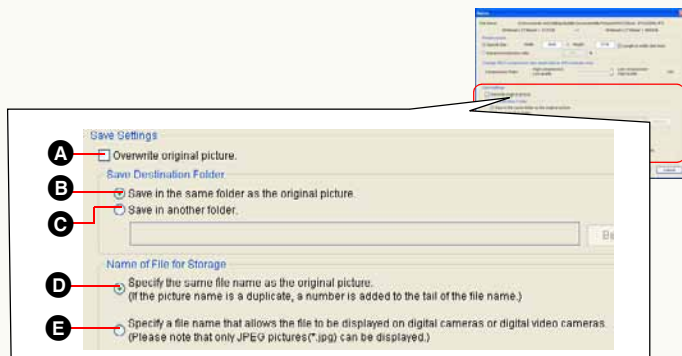
B. All pictures in the folder

- When Creating still pictures from motion pictures (⑥) is selected, only one motion picture (MOV format) is processed at one time. If there are two or more motion pictures to be processed, a confirmation message is displayed. Click [Yes] to process the first motion picture only. Click [No] to return to the previous window without processing.

4 Set the details of the process on the setting window.

- | | |
|---|---|
| <ul style="list-style-type: none"> ① Changing the picture size ⇒54 ② Converting the picture format ⇒55 ③ Changing several file names at one time ⇒56 ④ Adding date and title information to a picture ⇒58 | <ul style="list-style-type: none"> ⑤ Changing the recording date ⇒59 ⑥ Creating still pictures from motion pictures ⇒60 ⑦ Rotation ⇒61 |
|---|---|

5 Specify how to save.



- In this description, the window for changing the picture size (1) is used.

■ Processing the original picture directly:

- A** Select the check box.
 - If the original picture must be maintained, deselect it.
 - In case of converting the picture format (2), select [Delete the original file] check box in the lower part of the window.

■ Creating a new picture without deleting the original picture:

Clear the check box **A** and perform the following settings.

● Setting the save destination folder

- B** The created picture is saved in the same folder as the original picture.
- C** Saved in any folder you designate.
 Click [Browse] and [Select Folder] window will appear. Select any folder you want to designate as the save designation and click [OK].

● Setting the save file name

- D** The same name as the file name of the original picture is given.
 If a file having the same name already exists, a parenthesized number is suffixed.
 (Example: [P1000123 (1)])
 - If you select this item for picture on the memory card, those pictures may not be reproduced by your digital camera.
- E** A file name that can be reproduced by digital cameras is given. (4 alphabet characters + 4-digit number. Example: [IMGA0123])
 - However, only JPEG files (extension .JPG) can be reproduced by digital cameras.

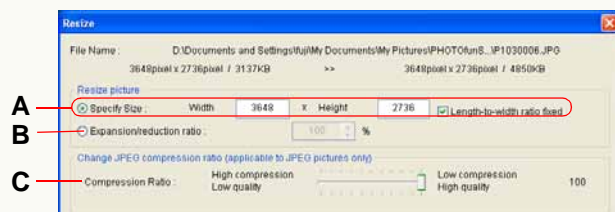
6 Click [OK].

- If Creating still pictures from motion pictures (6) is selected, different saving procedures will apply. Refer to ⇒60.

Resizing a picture

❖ Display method for setting window and save method, see →52

- ❖ You can resize pictures in BMP, JPEG and TIFF format.
- ❖ You can select two or more pictures to resize at one time. In such cases, same setting is applicable for all pictures.



[Resize picture]

- Enter the desired size into [Width] and [Height].
 - The maximum value to be entered depends on the memory size on the PC.
 - Check [Length-to-width ratio fixed] and set either [Width] or [Height], and the other will be automatically set. If the aspect ratio is changed, the picture will be distorted. Unless otherwise necessary, it is recommended not to deselect [Length-to-width ratio fixed].
- Set the desired picture size with the [Expansion/reduction ratio] with reference to the original picture size.

- The settable range is 1% to 200%. However, you cannot set the maximum value depending on the memory size of the PC.
- If either [Width] or [Height] is changed to 1 or less after resizing, 1 will be set.

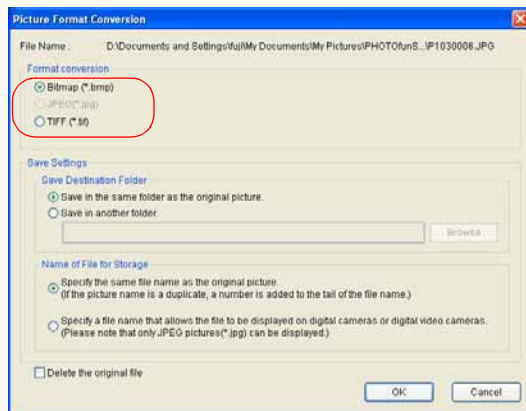
[Change JPEG compression ratio]

- If the picture to be resized is in JPEG format, the compression ratio can be set by the slider.
 - Move the slider to the right for lower compression ratio or to the left for higher compression ratio.
 - The higher the compression ratio is set, the smaller the file size becomes and the more the picture quality is degraded.

Converting picture format

❖ Display method for setting window and save method, see ⇒52

- ❖ You can convert pictures in BMP, JPEG and TIFF format.
- ❖ You can select two or more pictures and convert their format at one time.
In such cases, same setting is applicable for all pictures.



[Format conversion]

Sets the picture format you would like to convert to. You can select any of BMP (bitmap), JPEG or TIFF.

- You cannot select the same format as that of the original picture.
- If two or more pictures are selected, you can select the same picture format as that of the original picture, but

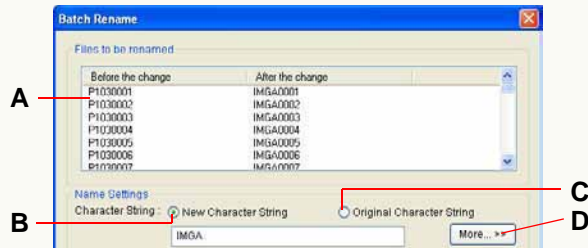
the conversion will be carried out only for the pictures in different formats.

For example, if the formats of the original pictures are BMP, JPEG and TIFF and [JPEG] are selected in [Format conversion], the BMP and TIFF pictures will be converted into JPEG format but the conversion will not be carried out for the JPEG pictures.

- ❖ Even if a JPEG picture is converted to TIFF or BMP format, the quality of the picture cannot be improved.

Changing several picture file names at one time (Batch renaming)

❖ Display method for setting window and save method, see →52



● Display of the file name

- A.** The file names before and after changing can be checked.
Before performing the changes, confirm the file name in [After the change] that will appear after the changes are done.

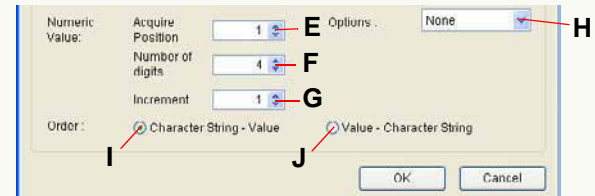
● Name Settings

[Character String]

- B.** It is a file name with a combination of entered characters and serial number.
- Up to 64 alphanumeric (single-byte) characters can be set.
 - Serial number can be changed in detailed setting area.
- C.** It is a file name with a combination of original file name and serial number.
- Serial number can be changed in detailed setting area.

● Detailed setting of name

More detailed setting area will be displayed when Detailed setting button (D) is clicked.



[Numeric Value]

You can change the settings of serial number.

- E.** Sets the start number from which the serial number starts. The settable range is 0 to 1,000.
- F.** Sets the number of digits for the serial number. The settable range is 1 to 9.
- G.** Sets the increment of the serial number. Up to 1,000 can be set.
- H.** You can put parentheses around the numeric value or set a symbol between the character string and the numeric value.

[Order]

Sets the order of the character string and the numeric value.

- I.** The character string comes first, then the numeric value.
- J.** The numeric value comes first, then the character string.

- ❖ If there is a file having the same name and the same serial number, the serial number will be skipped and ascended for renaming the next file.
- ❖ When the file name of the picture in the memory card is changed, the picture cannot be played on the digital camera in some cases.

If you cannot play the picture after you changed the file name of the picture, acquire the picture file to the PC once and then write it onto the memory card with the procedure described in “Writing pictures onto a memory card” (⇒85). The file will be written with its file name automatically changed to be suitable for playing on the digital camera.

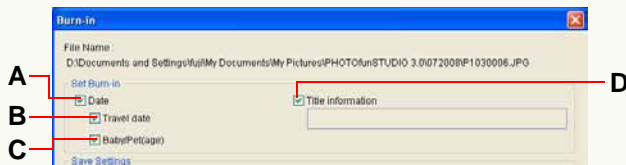
However, given attention to the free space of the memory card because the original file is left on it.

Adding date and title information to a picture (Burn-in)

❖ Display method for setting window and save method, see →52



- ❖ You can select and insert the recording date and title information onto two or more pictures at one time. In such cases, same setting is applicable for all pictures.
- ❖ If there are pictures imprinted with the date and the title information from a digital camera compatible with the [DATE STAMP] and [TEXT STAMP] functions, the message “The same data will be inserted over the existing date and the title information” appears when the burn-in is performed. If [Yes] is clicked, the burn-in will continue. If [No] is clicked, the burn-in will stop.
(If there are pictures with the date and title information burned-in by other than the [DATE STAMP] and the [TEXT STAMP] functions, the message will not appear, so check the contents carefully before performing the burn-in.)



A. Burn-in the date.

(Only pictures with the recording date information in JPEG or TIFF format of Exif)

- B.** Burn-in the number of travel days (××th day of travel).
(Only pictures recorded with the [TRAVEL DATE] function on a digital camera)
 - C.** Burn-in the age in months/years.
(Only pictures recorded with [AGE] function on a digital camera with [BABY] mode and [PET] mode.)
 - D.** Burn-in the title information.
(Only for the picture for which the title, name or travel destination is set by digital camera that comes with [TITLE EDIT] function, [BABY] mode, [PET] mode, [TRAVEL DATE] function.)
- The date and title information will be inserted on the bottom right of the picture. A maximum of three lines will be indicated in the order of **A**, **B/C**, and **D** from the top.

- ❖ The color and size of the characters used for the burned-in date and title information cannot be changed.
- ❖ When the date and title information are burned-in, the picture will be recompressed, and picture quality may be degraded.
- ❖ The date may not be properly added and burned-in on pictures if the date was not set on the digital camera when the picture was taken or if it was recorded by a digital camera not manufactured by Panasonic.

Changing the recording date

❖ Display method for setting window and save method, see ⇒52

- ❖ You can change the recording date of only JPEG and TIFF pictures with Exif information (containing the recording date information).
- ❖ You can select multiple pictures and change the recording date at one time.



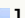


E. The same settings can be applied to all of the selected pictures.

- ❖ In the case of pictures recorded with the [BABY] mode, [PET] mode or with the [TRAVEL DATE] function by the digital camera that supports these functions, the age in months/years or the number of travel days is not changed even if the recording date has changed.

● Display of the target picture

A. Displays the file name of the target picture.

- When you select multiple pictures, you can switch them with [], [] and [].

B. The date which is now set as the recording date is displayed.

● Setting new date and time

C. Sets the month, day, year, hour, minute and second.

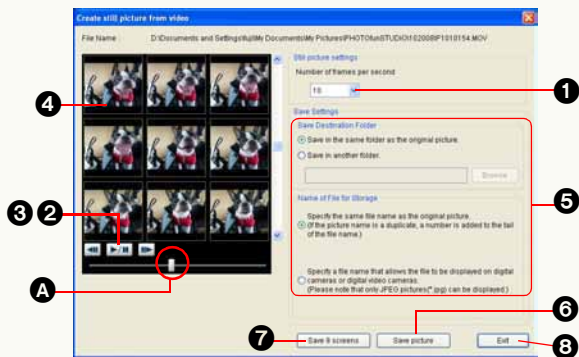
- You can set the recording dates from 1971 to 2037.

D. When this button is clicked, the calendar dialog is opened and you can set the date from the calendar dialog.

Creating still pictures from motion pictures

❖ Display method for setting window and save method, see ⇒52

- ❖ Only motion picture files in the MOV format, recorded on Panasonic's LUMIX digital still cameras can be processed.
- ❖ It is impossible to process two or more motion pictures at one time.
- ❖ The still picture will be saved in JPEG format of Exif.



- 1 Set the number of frames per second.
 - If the value [15] is set, for instance, motion pictures will be divided into still pictures every 1/15 (one-fifteenth) of a second.
 - You cannot select a number of frames that exceeds the number of frames (fps) in the motion picture files.
- 2 Click the [▶/⏸] button to play back the motion picture. The motion picture will be played back at the center of frames that are divided into nine sections.

- 3 Click [▶/⏸] button at your favorite position to stop the motion picture being played back. The motion pictures stop and the previous and next frames are displayed as still pictures.
 - You can move the displayed position by moving the motion picture playback slider (A) horizontally while the motion picture is being played back or while stopped.
 - You can move frames forward/backward one by one by clicking the [⏮] button or the [⏭] button while stopped.

- 4 Click the frame that you want to save as a still picture.
 - Double-click the frame to enlarge the displayed still picture so that the detailed contents can be confirmed.

- 5 Specify how to save. (⇒53)

- 6 (To save a single frame) Click [Save picture]. The selected frame will be saved as a still picture.

- 7 (To save 9 frames collectively as a single still picture) Click the [Save 9 screens]. The 9 frames being displayed will be saved as a single still picture.

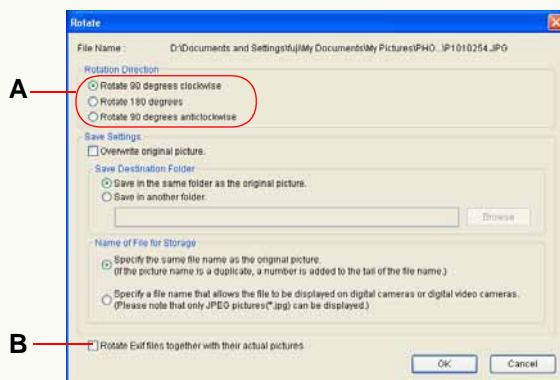
- 8 Click [Exit]. The [Create still picture from video] window will close and return to the original window.
 - You can create still pictures any times until you finish.

- ❖ Some motion blur can occur on the created picture, especially if there is fast moving action in the motion picture. This is normal and not a malfunction.

Rotating picture

❖ Display method for setting window and save method, see ⇒52

- ❖ You can rotate pictures in BMP, JPEG and TIFF format.
- ❖ You can select two or more pictures to rotate them at one time.
In such cases, same setting is applicable for all pictures.
- ❖ When you rotate many pictures at one time, it may take time to finish the process.



• When setting window is not displayed, select [Tools] → [Settings] and select [Show setting panel before rotating.] in [Rotate] tab. (⇒103)

A. Select the direction and angle to rotate the picture.
You can select [Rotate 90 degrees clockwise], [Rotate 180 degrees] or [Rotate 90 degrees anticlockwise].

B. If checked, not only will the picture with its Exif information being rewritten rotate, the actual picture data will be rotated as well.

- However, when the actual picture is rotated, it is recompressed and the picture quality may be deteriorated.

❖ You can also rotate pictures with the settings set beforehand without displaying the setting panel. Select [Tools] → [Settings] and select [Hide setting panel] in [Rotate] tab and set in detail. (⇒103)

■ Rotating pictures using the context menu

❖ You can rotate only JPEG and TIFF pictures with Exif information using the context menu.

1) Select the pictures to be rotated from the picture browser.

2) Right-click the picture and then select [Clockwise 90-degree rotation] or [Anticlockwise 90-degree rotation].

- The original picture is directly rotated by the change in Exif information.

Retouch

PHOTOfunSTUDIO is equipped with the retouch function, which is capable of correcting pictures and adding effects.

By using the retouch function, you can adjust the brightness and color tone of pictures as well as adding such effects as blur and sharpness.

▷ Start and exit the retouch function ⇒63

▷ Window configuration of the retouch function ⇒64


▷ To correct pictures or add effects ⇒66

▷ To save retouched pictures ⇒69

- ❖ Please note: When adjustments made to a picture's color, contrast, brightness or hue are made, the appearance of the printed pictures may differ slightly from that which is seen on your PC's monitor. This is due to the individual adjustments of your PC's monitor and video card. This is normal and does not indicate a malfunction.
- ❖ When any adjustments or modification to a picture is made, we suggest you save the modified picture by another name. This way, the original picture is preserved for possible use in the future.
- ❖ When performing any modification to a picture, the amount you can adjust, and still maintain good quality, is limited. For example, if you have a very dark picture, it's not possible to lighten and maintain very good quality.

Start and exit the retouch function

Start

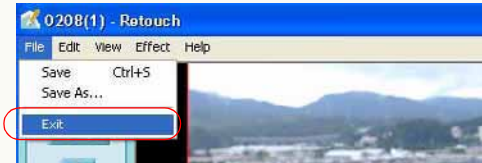
- 1 Select the picture to be retouched from the picture browser.
- 2 Click  on the toolbar.


The retouch function starts and the selected picture will be displayed in the picture window.

- If multiple pictures are selected, the confirmation message will be displayed. Select [Yes] to start the retouch function for the top picture. Select [No] to cancel the retouch function and return to the original window.
- With the retouch function, you can edit and process only files in JPEG, BMP or TIFF formats, among the picture formats supported by PHOTOfunSTUDIO.

Exit

- 1 Select [File] → [Exit] on the menu bar for the retouch function.



- You can also exit by clicking  on the top right of the retouch window.
- Alternatively, click the [Return to original screen] button on the left-hand side of the retouch window.

Window configuration for the retouch function



1 Picture window

Displays the pictures being retouched. When pictures are retouched, the operation results will be reflected every time.

2 Menu bar (⇒70)

Collectively displays available retouch function operations by type.

3 Toolbar

Collectively displays the buttons for frequently used functions.

100% : Magnification ratio

Displays the current magnification ratio of the picture window.

1:1 [Actual Size]

When this button is clicked, the picture is displayed in the actual size.

[Zoom]

When clicked, the button turns orange, and the mouse pointer becomes a magnifying glass (Enlarged/Reduced mode). Left-click once in this state to increase magnification by one step. Right-click once to decrease the magnification by one step.

To return to normal mode from the enlarged/reduced mode, click the button again.

[Undo]

Cancels the last operation and returns the picture to the state before executing the operation.

[Redo]

Executes the canceled operation again.

[Undo All]

Cancels all of the executed retouch operations and returns to the initial state.

[Rotate Left]

When this button is clicked, the displayed picture rotates 90 degrees to the left.

[Rotate Right]

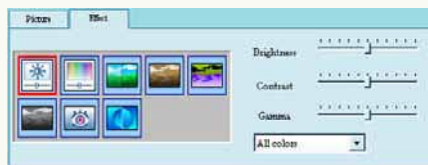
When this button is clicked, the displayed picture rotates 90 degrees to the right.

4 Editing panel

[Picture]

The picture files in the selected folder when starting the retouch function will be displayed in thumbnail view. However, files that cannot be displayed in thumbnail view will be displayed with [×]. Files that were deleted with software other than PHOTOfunSTUDIO after starting the retouch function may be displayed with an [×].

[Effect] (⇒66)



With these buttons, you can change brightness, contrast, chroma, color phases, sharpness and other characteristics of the picture and execute auto correction.

5 [Return to original screen] button

Click this button to exit the retouch function, and return to the previous window.

Correcting pictures or add effects

1 Double-click a picture to be retouched in the **[Picture]** panel.

- This operation is not required if the picture to be retouched has already been displayed in the picture window.

2 Select items corrections and add effects on the **[Effect]** panel and set details.

[Brightness & Contrast]

Click this button to display the slider (❶) for adjusting brightness, contrast and gamma.



Adjust by moving the slider and checking the effects in the picture window.

By clicking ❷, you can select colors to be corrected among **[Red]**, **[Green]**, **[Blue]** and **[All colors]**.

[Hue & Saturation]

Click this button to display the slider (❶) for adjusting hue and saturation.



Adjust by moving the slider and checking the effects in the picture window.

[Sharpness]

Click this button to display the slider (❶) for sharpening or shading pictures.



Adjust by moving the slider and checking the effects in the picture window.

[Sepia]

Click this button to convert picture colors to sepia.



 **[Negative]**

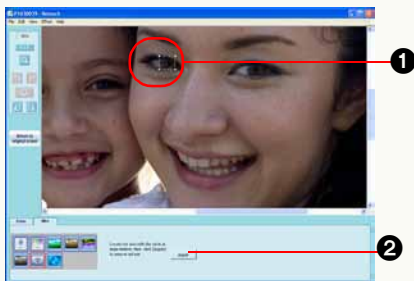
Click this button to invert negative and positive pictures.

 **[Grey Scale]**


Click this button to convert pictures to gray scale (monochrome pictures).

 **[Red Eye Remove]**

Click this button to display a frame (1) for setting the range of red eye elimination. Set the frame on the area of red eye effects and click [Apply] (2) to reduce red eye.



- Effects of red eye elimination may vary with the picture.


 **[Auto Enhancement]**


Click this button to automatically correct brightness and contrast.




- This function is effective when the subject has been photographed in backlight and it is too dark. However, the expected effects may not be obtained with some pictures.
- When a picture is printed incorporating the picture quality correction function, do not execute auto correction with the retouch function. The picture may be corrected too much.

■ To cancel retouching effects

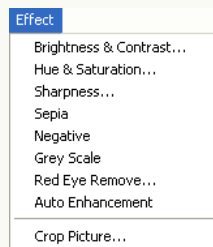
Click [] on the toolbar or select [Edit] → [Undo] on the menu to cancel the previous operation and return the picture to the state before executing the retouch operation. With this function, it is possible to cancel the previous operations of up to 20 times.

To execute again the canceled operation, click [] on the toolbar or select [Edit] → [Redo] on the menu.

Click [] on the toolbar or select [Edit] → [Undo All] on the menu to cancel all retouching operations. The picture then returns to the initial state.

■ To execute retouching using the menu

Instead of the editing panel, you can correct or add effects to pictures from [Effect] on the menu bar.



To set [Brightness & Contrast], [Hue & Saturation] and [Sharpness], the respective windows for detailed settings will be opened.



The setting methods are the same as the editing panel. Whenever settings are changed, the results will be reflected in the picture window and in the set values on the editing panel.

To fix the contents and close the detailed settings window, click [OK].

Click [Cancel] to cancel the setting and close the detailed settings window. Pictures in the picture window and the

settings on the editing panel will also return to the initial states before the detailed setting window was opened.

■ To extract a part of a picture

It is also possible to extract only the necessary part of a picture.

1) Select [Effect] → [Crop Picture] on the menu.

The [Crop Picture] panel will be displayed.

2) Designate the necessary part by dragging the anchor point (1) and click [OK].



The designated part will be extracted.

- You can also set the size of the part to be extracted by entering a numerical value in (2).
- ❖ The printed quality of the extracted portion may be of a lesser quality than the original. This occurs more often when the extracted portion is printed at a large size. This is normal and not a malfunction.

Saving retouched pictures

To save with a new name

- 1 Select [File] → [Save As] from the menu.



- 2 Set the location for saving pictures, the file name and the file type, and then click [Save].



- Only files in BMP, JPEG and TIFF format can be saved.
- If the original pictures are recorded in JPEG format, the recording information for the original pictures can be saved by checking ❶ to save in JPEG format.

To overwrite

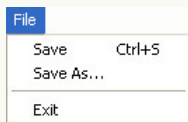
- 1 Select [File] → [Save] from the menu.



The [Save As] window will be displayed for pictures that have not been saved. To overwrite the original picture, save the picture using the same name as the original. From the second time, pictures will be overwritten simply by selecting [Save].

Retouch function menu

■ [File] Menu



[Save]

Overwrites the edited file.

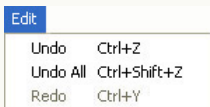
[Save As]

Renames and saves the edited file.

[Exit]

Exits from the retouch function.

■ [Edit] Menu



[Undo]

Cancels the previous operation.

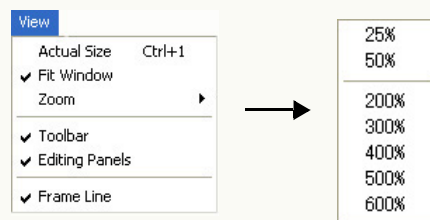
[Undo All]

Cancels all of the executed retouch operations and returns to the initial state.

[Redo]

Restores a canceled operation.

■ [View] Menu



[Actual Size]

Cancel the zoom on the picture to switch to the actual size display (100%).

[Fit Window]

Adjusts the picture to the size of the picture window. (The aspect ratio is not changed.)

[Zoom]

You can select the magnification from 25% to 600%.

[Toolbar]

When you select this menu, the toolbar is displayed on the window.

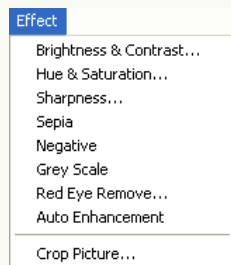
[Editing Panels]

When you select this menu, the editing panel is displayed on the window.

[Frame Line]

When you select this menu, a frame line is displayed on the picture window.

■ [Effect] Menu



[Brightness & Contrast] (⇒66)

[Hue & Saturation] (⇒66)

[Sharpness] (⇒66)

[Sepia] (⇒66)

[Negative] (⇒67)

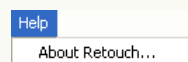
[Grey Scale] (⇒67)

[Red Eye Remove] (⇒67)

[Auto Enhancement] (⇒67)

[Crop Picture] (⇒68)

■ [Help] Menu



[About Retouch]

Displays the version information of Retouch function.

Outputting

You can output the acquired pictures in various formats like print, mail attachment, media writing etc.

- ▷ Output flow ⇒73
- ▷ To print pictures ⇒74
 - Not only can you print pictures one by one, but printing also can be done with various methods like “Multiple picture printing”, “Index printing of thumbnails”, printing corresponding to [SIMPLE MODE] of the digital camera etc.
- ▷ To attach pictures to e-mails ⇒80
 - You can easily process pictures so that you can attach them to e-mails.
- ▷ To make wallpaper from pictures ⇒83
 - You can make wallpaper from the acquired pictures.
- ▷ To perform print settings (DPOF settings) ⇒84
 - You can set print setting on the pictures in a memory card.
- ▷ To write pictures to the memory card ⇒85
- ▷ To write pictures to a CD or a DVD ⇒87
- ▷ To upload motion pictures to YouTube ⇒89
 - A motion picture can be uploaded to the motion picture sharing site “YouTube” on the Internet.

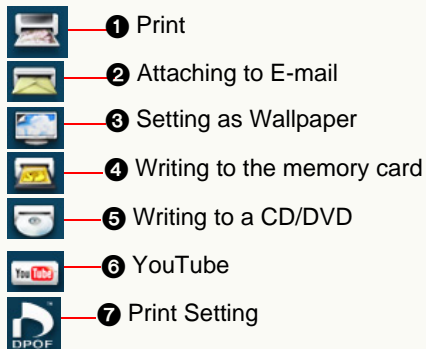
Output flow

You can output pictures as follows.

1 Put a mark on the pictures to be output. (⇒22)

- Adding a mark is not necessary when you want to output all of the pictures from the selected folder.
- For the file format that can be output, refer to the page corresponding to each outputting.

2 Select a desired output destination in the Output view.



- If you drag the selected pictures to the output destination button, go to Step 4.
- You can also select any output destination from the context menu opened by right-clicking a picture.

3 Select the target and click [OK].



- A** The marked pictures
- B** All pictures in the folder

- When you select Print setting (7) as the output destination:



- C** Reads the pictures already subjected to print setting on the memory card.

4 Set and output.

- | | |
|---|----------------------------------|
| 1 Print ⇒74 | 5 Writing to a CD/DVD ⇒87 |
| 2 Attaching to E-mail ⇒80 | 6 YouTube ⇒89 |
| 3 Setting as Wallpaper ⇒83 | 7 Print setting ⇒84 |
| 4 Writing to the memory card ⇒85 | |

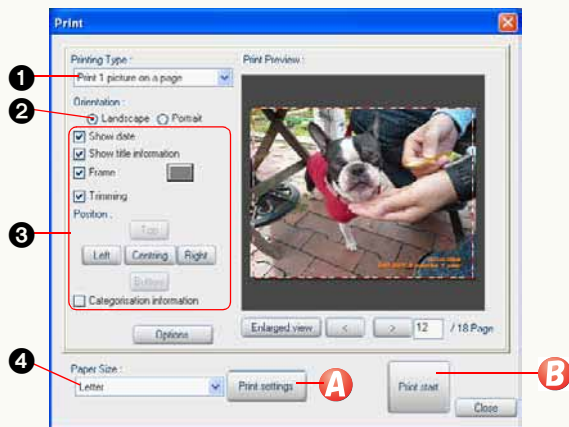
Printing pictures

❖ This function cannot be used when the printer setting is not completed on Windows®.

1 Select [] as the output destination. (⇒73)

- The printable picture formats are JPEG, BMP, TIFF and MOV format.
- Up to 1,000 pictures can be printed at one time.

2 Set printing method.



1 Select a desired print type.

- Pictures are arranged after automatically enlarged or reduced to the sheet size (except in [Simple Print]) and rotated.

2 Select the direction of the paper (Portrait/Landscape).

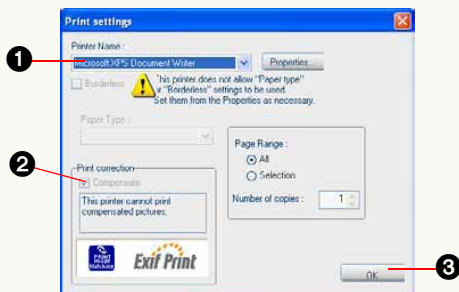
3 Set the layout.

- The contents of the setting vary depending on the print type. (⇒77)
- The inside of the dotted-line frame (red) is to be printed.
- If there are pictures imprinted with the date and title information from a digital camera that is compatible with the [DATE STAMP] and [TEXT STAMP] functions, the message "The same data will be printed over the existing date and the title information" appears when [Show date] or [Show title information] is checked. If [Yes] is clicked, the recording date and the title information will be added when printing because these check boxes remain selected. (Confirm the printed contents in [Print Preview].) If [No] is clicked, these check boxes are cleared, and the recording date and the title information will not be added. (If there are pictures with the date and the title information inserted by other than the [DATE STAMP] and the [TEXT STAMP] functions, the message will not appear, so check the contents carefully with [Print Preview] before printing.)

4 Select paper size.

3 Click **A**.

4 Set the printer.



1 Select printer.

2 Select when compensating using PRINT Image Matching*¹ information or Exif Print*¹ information.

- You cannot compensate thumbnail pictures.
- If you select any printer or paper incompatible with PRINT Image Matching or Exif Print, the selection is canceled.

*1: Refer to Glossary. (⇒114)

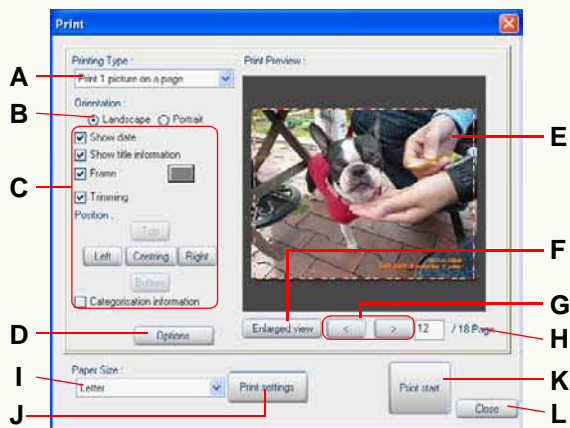
3 Click [OK].

5 Click **B**.

- To break printing halfway, click [Cancel].

- ❖ With motion pictures, the first scene of the motion picture is printed. You cannot select a scene halfway to print.
- ❖ If you rotate pictures recorded in portrait orientation lengthwise beforehand, you can print the date etc. on the position determined.

■ Details of print window



● Print method settings

A. Select printing type.

Print type	Description
Print 1 picture on a page	Prints one picture on one sheet.
Print 2 pictures on a page	Prints 2 pictures on one sheet.
Print 4 pictures on a page	Prints 4 pictures on one sheet.
Print 8 pictures on a page	Prints 8 pictures on one sheet.
Index printing (large thumbnail)	Prints about 20 thumbnails on one sheet.
Index printing (medium thumbnail)	Prints about 40 thumbnails on one sheet.

Print type	Description
Index printing (small thumbnail)	Prints about 80 thumbnails on one sheet.
Index printing (Adjust to paper)	Prints up to about 160 thumbnails on one sheet, which are sized to the sheet.
Print file information	Prints thumbnails and file information as an index print.
Print camera information	Prints thumbnails and camera information as an index print.
Simple Print* ¹	Prints the pictures recorded using "SIMPLE MODE" of digital camera to sizes appropriate to picture mode.

*1: In [Simple Print], pictures are arranged on the sheet of paper by the picture mode specified on recording.
The print size of pictures is as given below.

Mode	Picture size
4"×6"/10×15cm	L size (89 × 127 mm)
E-MAIL	A7 size (70 × 93 mm)
ENLARGE	Size adapted to print paper

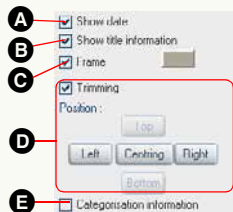
Pictures recorded in different modes are not printed together on the same sheet of paper.

When printing pictures other than the ones recorded in "SIMPLE MODE", those pictures are printed in the size adapted to printing paper.

B. Select the direction of the paper.

C. Set layout.

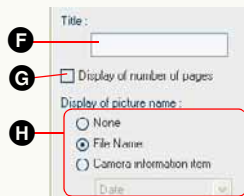
●[Print 1 picture on a page]



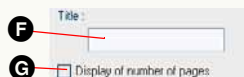
●[Print 2 pictures on a page], [Print 4 pictures on a page], [Print 8 pictures on a page]



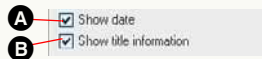
●[Index printing]



●[Print file information], [Print camera information]

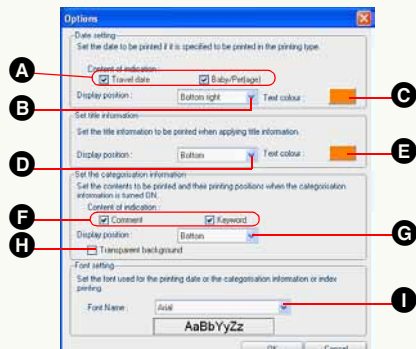


● [Simple Print]



- A** If you check this box, the date of recording is displayed on the picture.
- If there is no information about the recording date, the last update date is displayed.
 - The date is set in accordance with the Regional Settings in Windows® Control Panel.
 - The date may not be properly added and printed on pictures for which the date was not set on the digital camera or those recorded by digital cameras made by other than Panasonic.
 - The age in month/year and the travel date are also printed if the picture is recorded with a digital camera which supports [BABY] mode, [PET] mode, [TRAVEL DATE] functions and each functions are enabled. (These settings can be changed. (⇒78))
- B** If you check this box, the title information will be printed on the picture.
- C** If you check this box, a frame is added around the picture.
- Clicking [] opens the color selection panel, on which you can set the color of the frame.
- D** If you check this box, the picture is printed without changing its size.
- When the picture lies off the edges of the paper, you can adjust its position by clicking the operating buttons ([Top]/[Bottom]/[Left]/[Right]). If you click [Centring], the picture is adjusted so that its center will match the center of the print area (inside the dotted-line frame).
 - When you adjust the picture to print it in full on the paper, the picture may be cut due to errors in feeding paper, in process to enlarge or minimize the size of the picture, etc. When you trim the picture, leave a little blank/white space on the sides of the paper.
 - If you clear this check box, the whole picture is printed.
- E** If you check this box, categorization information (comment, keyword) are displayed in the lower part of the paper.
- This takes effect only when information is set in the picture file.
 - The line feed position of the comment on the preview screen may differ from the line feed position on the actual print.
- F** Enter letters and they will appear in the upper part of the paper.
- G** If you check this box, the paper number is displayed in the lower part of the paper.
- H** Set the contents displayed under each thumbnail.

D. Further detailed layout settings can be done after the [Options] window is displayed.



[Date setting]

If adding the recording date on the picture, you can set the following items.

- A You can show/hide information other than the recording date ([Travel date] <x xth day of travel> and [Baby/Pet] <age in months/years>).
- B Set the display position.
- C Clicking [] opens the color selection panel, on which you can set the color of the characters.

[Set title information]

To add title information to a picture, set the following items.

- D You can select either [Top] or [Bottom] of the display position.
 - Printing is normally done from the left side of the picture.

- If the position for the printing date is the same position as the title information (top left or bottom left), the title information will be printed on the right side of the picture.

- E Clicking [] opens the color selection panel, where you can set the color of the characters.

[Set the categorisation information]

If adding the categorization information, you can set the following items.

- F You can select categorization items to be printed.
- G Set the printing position.
- H You can make the background transparent/opaque.

[Font setting]

- I Types of characters (fonts) used for the date, title information and categorization information can be set.

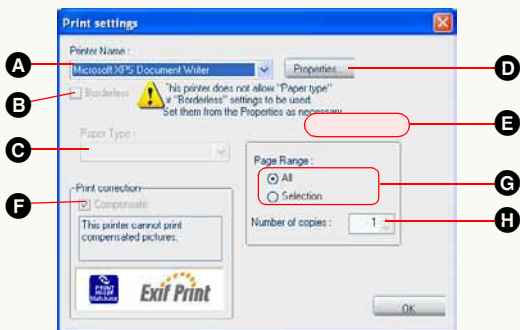
• Checking of printing picture

- E. The picture to be printed will be displayed per page. (Print preview)
- F. Page being displayed is displayed in enlarged view.
- G. Page is switched.
- H. Page number of the page being displayed and total number of pages will be displayed.
 - When page number is entered and [Enter] key is pressed, an entered page will be displayed.

• Printer settings

- I. Select paper size.

J. Set for printer.



- A** Selected printer will be displayed.
- B** When you select this check box, borderless printing (which refers to printing without leaving any margins of the paper) is set.*2
 - You cannot select this check box if your printer is incompatible with borderless printing.
- C** Select a paper type.*2
- D** When you click this button, the Properties window of the printer appears. You can adjust Advanced settings of the printer there.
 - The settings specified in the Properties window are reflected on items **A** to **F**.
- E** Set the picture quality.
 - This option can be selected only when you select a paper type permitting picture quality setting.
- F** Select when compensating using PRINT Image Matching information or Exif Print information.
 - When non-compatible printer or paper is selected, check mark is disabled.

- G** Set the print range.
 - [All]
All of the pages will be printed.
 - [Selection]
Only the page being displayed will be printed.
- H** Sets the number of prints for one page.

*2: This option can be selected when you use a printer compatible with EPSON EasyPrintModule. If your printer is incompatible with it, set from **D**.

(EPSON EasyPrintModule is a program, supplied from EPSON, which permits you to easily configure the print settings of your printer from compatible application software. If you use an EPSON printer, install the module supplied with your printer.)

- **Execution and End**

- K.** Printing will be executed.
- L.** Set contents will be canceled and print window will be closed.

Attaching pictures to e-mail

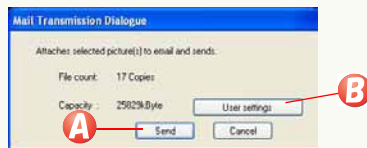
You can attach acquired pictures to e-mail. The picture can be attached to mail after converting it automatically to the optimum size for the mail or converting using the specified conversion method.

❖ With e-mail software other than Windows® Mail, Microsoft® Outlook® and Microsoft® Outlook Express, attaching pictures to e-mails using this function may not work.

1 Select [] as the output destination. (⇒73)

- The picture formats that can be attached to e-mails are BMP, JPEG, TIFF and MOV.
- You can attach up to 20 pictures at one time.

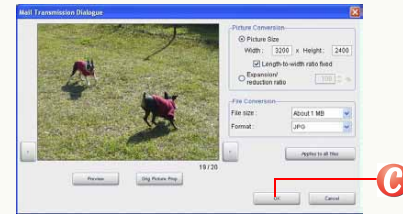
2 Check the picture conversion contents and click **A** when you want to attach picture as it is or click **B** when you want to change the conversion settings.



A : Proceed to Step 4.

B : Proceed to Step 3.

3 Set the picture size and file size to appropriate size and click **C**.



- For details, see ⇒82.
- It is recommended to restrict the total file size of an e-mail (the file size of the message text plus those of pictures to be attached) to 1 MB.

4 The e-mail software starts and the message box is opened with the picture attached. Enter the required items.



- Enter the destination, title and message and send it as you normally would.

❖ MOV motion picture cannot be converted to other size or file formats. (The buttons are greyed out.)

■ If you cannot attach a file to an e-mail

The e-mail software must be set up. Exit from the PHOTOfunSTUDIO, and set up as follows:

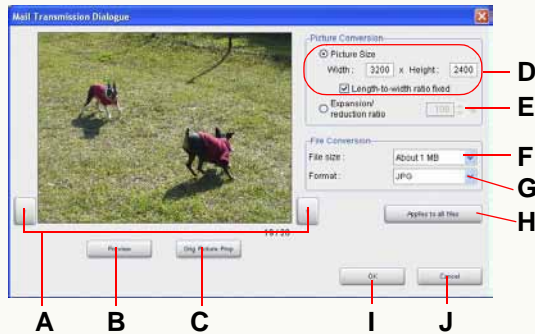
1) Activate the mail software to be set up.

- If you activate it for the first time, set the mail addresses, etc.

2) If the message, [Would you like to make it your default client?] appears, select [Yes].

- If the message does not appear, refer to the operating instructions of the e-mail software to set the e-mail software as the default client.
Example: Select [start] → [Control Panel] and open [Internet Options]. Then click [Programs] tab, select the software you use on [E-mail] and click [OK].
- The contents of the message vary by the e-mail software you are using.
- Also read the operating instructions for the e-mail software.

■ Details of setting window for e-mail sending



● Picture file confirmation buttons

- A. Clicking these buttons switches to the previous and the next picture when multiple pictures are selected.
- B. A picture converted with the set conditions is temporarily displayed. (Preview)
 - Preview is allowed by an application associated with the converted picture.
 - You cannot switch to the previous or subsequent pictures on the preview window.
- C. The properties of the original picture are displayed.

● Picture size setting

- D. You can specify any size. The settable maximum picture size depends on the amount of memory installed in the PC.
 - Be aware that the attached picture will be skewed if the set aspect ratio differs from that of the original picture.

- With [Length-to-width ratio fixed] selected, when you enter any number in either [Width] or [Height] area, an appropriate number that maintains the original picture's length-to-width ratio is automatically set in the other area.

E. Sets the picture size by the zoom ratio. The settable zoom ratio is 1% to 200%.

● Setting the file size and picture format

F. Sets the target file size for a picture to be attached. The selectable target values are [About 100 KB], [About 300 KB], [About 500 KB], [About 1 MB], and [Not specified].


However, if formats other than JPEG are selected in [Format], the file size cannot be set.

G. Set if you convert the format of the picture when it is attached to an e-mail. The selectable picture formats are [JPG], [BMP] and [TIF].

● Others

- H. The picture size, file size and file format currently set is applied to all the pictures selected. Click this if you apply the same settings to all the files to be attached.
- I. Setting contents is applied and the window will return to the previous window.
- J. Setting contents is canceled and the window will return to the previous window.

Using a picture as wallpaper

- 1 Select [] as the output destination. (⇒73)
 - The picture formats that can be used as Wallpaper are BMP, JPEG and TIFF.
 - Only one picture can be set.

- 2 Select the display position with **A** and click **B**.



- You can select a desired display position from among the following.

[Stretch]:

The picture is expanded as large as the desktop to be displayed.

[Center]:

The picture is displayed on the center of the desktop.

[Tile]:

The picture is duplicated and laid on the entire screen.

- If the selected picture is larger than the desktop size, a message asking whether or not the picture size is

changed will appear. If you want to change the picture size to the desktop size to use the picture as wallpaper, click [Yes].

- ❖ If the wallpaper is not displayed, click the desktop and press the [F5] key, and it will be displayed.
- ❖ When the aspect ratio of the picture set as a wallpaper is different from that of the display of your PC, the picture may be stretched vertically or horizontally. In this case, set [Picture Display] to [Center] or [Tile].
- ❖ [PHOTOfunSTUDIO wallpaper] will be created on the desktop setting window of the PC.

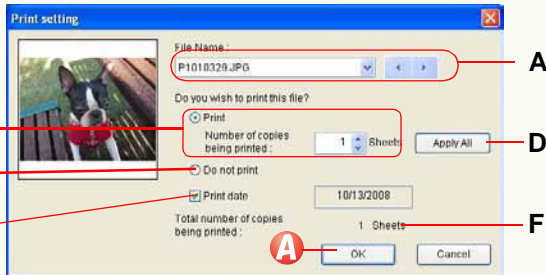
Print settings (DPOF setting)

- ❖ Only the still pictures (JPEG format or TIFF format) in the memory card recorded by a digital camera can be print set. Select pictures in [DVD/SD card] on the folder view. (Cannot be set if the pictures are selected from memory card drive in [Explorer].)

1 Select [DPOF] as the output destination. (⇒73)

- Only one memory card can be print set at one time. If pictures are selected from multiple memory cards, the memory card selection window will appear. Specify your desired memory card for print settings.

2 Set the number of prints and other items.



● Displaying the target picture

- A. Displays the file name of the target picture.
- When two or more pictures are selected, you can switch between them using [▼], [←], and [→].

● Setting the number of copies to be printed

- B. You can set the number of copies to be printed.

- Specify the number of copies to be printed with [▲][▼]. (0 to 999 can be specified.)
- If 0 is specified in [Number of copies being printed], the print setting for the picture will be canceled.
- If [Do not print] is selected, the setting cannot be allowed.

C. No printing.

D. The same settings are applied to all the selected pictures.

● Setting the date printing

E. If you select it, you can print pictures with the date (recording date). You cannot select this when the pictures have no recording date information.

● Displaying the total number of copies to be printed

F. The total number of copies to be printed for pictures in the memory card is displayed.

3 Click [A].

The contents set are written onto the memory card.

- ❖ If you change a file name of a picture etc. on the PC, the picture cannot be print set.
- ❖ Pictures on unsupported memory cards cannot be print set.
- ❖ The contents of the print setting will be saved as [AUTPRINT.MRK] in the [MISC] folder in the memory card.
- ❖ After setting, the print setting data saved in the memory card can be used on a printer supporting DPOF, etc.

Writing pictures onto a memory card

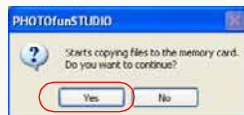
You can write (output) pictures acquired to the PC (hard disk) or pictures processed to a memory card in the format that can be reproduced by your digital camera.

❖ Set the memory card as writing destination.

1 Select [] as the output destination. (⇒73)

- The picture formats that can be written into memory cards are BMP, JPEG, TIFF, RAW and MOV.

2 Click [Yes].



Pictures are written to the memory card.

- Pictures are saved in the format that can be reproduced by the digital camera. (⇒86)

- When multiple memory cards are connected, the following window appears. Select memory card as writing destination and click [OK].



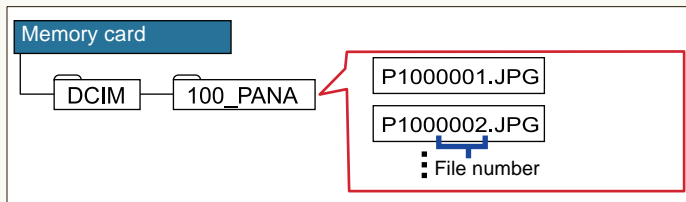
- When no memory card is connected, the following window appears if any removal disk drive is connected. If click [OK], pictures are written onto the removal disk.



- ❖ Use a memory card with a sufficient free space. If the free space is lacking, pictures are written only halfway.
- ❖ Pictures of which the aspect ratio is changed or to which other modifications made may not be displayed correctly on your digital camera.

■ Saving folder, saving format, and file name

The picture save place and file name will be as shown below.



The saving format of each file is as follows.

files	save format
BMP	Exif JPEG
JPEG, TIFF, MOV, RAW	unchanged

- ❖ If any selected file is associated with a different file (hereafter referred to as an “associated file”), both of two files are copied onto the memory card with the association maintained. (This holds true only when both two files can be copied to a memory card.)

If the association with one another is not established, they sometimes cannot be reproduced by the digital camera.

(Associated file: ⇒114)

- ❖ The alphabetic characters of folder names differ from those in the figure, depending on the model used.
- ❖ If there are multiple saving folders, pictures are saved in the folder with the largest folder number.
If [100_PANA] and [102_PANA] exist, for example, pictures are saved in [102_PANA].

- ❖ If there is no saving folder, a folder is created automatically. (The folder name is [100_PSDV].)
- ❖ Numbers following the last number in the folder are assigned to files.

For example, if the picture file with the largest number among the picture files that exist in a folder is [P1050005.JPG], the file names of pictures to be saved are [P1050006.JPG], [P1050007.JPG]...

- ❖ Some files are incapable of reproduction, depending on digital cameras.
- ❖ Even if a file is of a format capable of reproduction, it sometimes cannot be reproduced depending on its file specifications such as picture size and frame rate.
For the specifications of compatible files, refer to the operating instructions supplied with the digital camera.

Writing pictures to a CD or a DVD

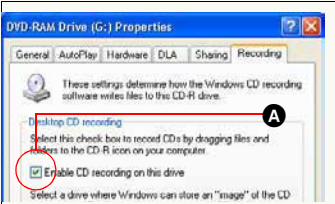
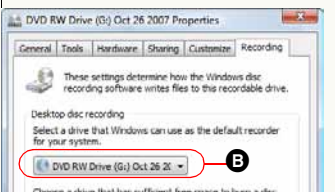
You can save pictures to a CD-R/RW, DVD-R/RW or +R/RW discs.

- ❖ Types of the writable files:
JPEG, TIFF, BMP, RAW, MOV
- ❖ A drive capable of writing to a CD or a DVD is required.
- ❖ Types of discs on which pictures can be written using this software may vary with the version of Windows:

	CD-R/RW	DVD R/RW
Windows 2000	—	—
Windows XP	○	—
Windows Vista	○	○

○: Writable —: Not writable

- ❖ Open [Properties] of the drive to be used for writing pictures, and set following items in the [Recording] panel in advance.

	<p>For Windows XP: Check A.</p>
	<p>For Windows Vista: Click B to select the drive to be used for writing pictures.</p>

When a Panasonic DVD MULTI drive is used with Windows XP, a message will be displayed confirming the writing of data to a DVD-RAM disc. To write data to a CD-R/RW, select [No] to enable the CD writing function.

- ❖ Set a disc as the writing destination.

1 Select as the output destination (⇒73)

The writing wizard of Windows starts.

- For Windows 2000, the button is not available.

2 Enter the disc title.



- For Windows Vista, the writing speed can also be set.

3 Click [Next].

Writing to a disc starts.

- ❖ Pictures are written in the root folder of a CD or DVD as the original file without any changes. If there is a file having the same name, a number with parentheses is added to the file name.
- ❖ If there is a file that is ready for being written onto a disc by using Windows Explorer, the file that is ready for being written will be canceled when data is written onto a CD/DVD from PHOTOfunSTUDIO.
- ❖ It is impossible to write pictures from the writing wizard to a disc formatted in the Windows Vista Live File System. Pictures can be written onto a disc in the Live File System format by the same way of DVD-RAM. Refer to the description of the following section.

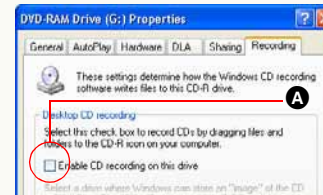
■ Writing to a DVD-RAM

If Windows XP/Vista is used, pictures can also be written to a DVD-RAM.

To write pictures to a DVD-RAM, the output menu will not be used. Copy pictures to a DVD-RAM in List mode, in the same way as copying pictures to the hard disk (⇒24).



- ❖ For Windows XP, open [Properties] on the DVD-RAM drive to set the following items for the [Recording] panel.



Uncheck **A**.

Upload picture to YouTube

Motion pictures can be uploaded on YouTube, a motion picture sharing site on the Internet.

❖ Only the following motion pictures can be uploaded.

Format	Maximum Size
MOV format	100 MB 10 minutes

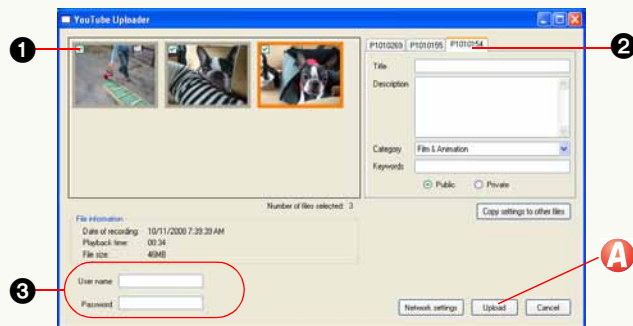
❖ Connect the PC to the Internet.

❖ The user name and password will be necessary at the time of uploading. (Please visit YouTube website for more details.)

1 Select [] as the output destination. (⇒73)

- Maximum of 10 motion pictures can be uploaded at a time.

2 Perform settings required for uploading.



1 Put a mark on motion picture.

2 Set title etc. to each motion picture.

- The set panels will be displayed to the front when the marked motion picture is selected.

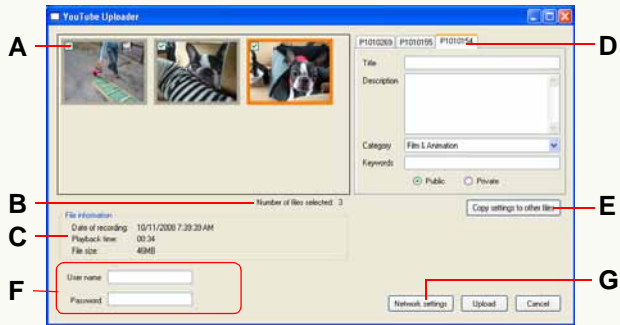
3 Enter user name and password.

3 Click **A**.

Uploading will start.

- Click [Cancel] when you want to interrupt the process.

■ Details of upload window



● Selecting the motion picture

- A. Put a mark on motion picture to be uploaded.
- B. The number of marked motion pictures will be displayed.
- C. The file information will be displayed if motion picture is selected.

● Title settings

- D. Set title etc. to each motion picture.
- E. The settings contents of display panel will be applied to all panels.

● Settings of internet connection

- F. Enter the user name and password for YouTube.
- G. A proxy settings window will be displayed.

Other settings

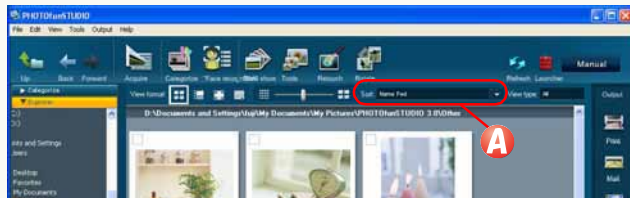
You can freely change the settings or set advance settings for a more easy operation.

- ▷ To customize picture display ⇒92
 - You can narrow types of pictures to be displayed in the picture browser or change the order of pictures displayed.
 - To change the order of pictures displayed ⇒92
 - To narrow types of pictures to be displayed ⇒93
- ▷ To register an application in the launcher ⇒94
 - If an application is registered in the launcher, you can activate the application by clicking it on the PHOTOfunSTUDIO window.
- ▷ To manage folders ⇒96
 - You can set the types of folders to be displayed in the folder view and create, delete or rename a folder.
- ▷ To view the properties of a picture file ⇒98
 - If you open the properties window for a picture, you can get various information about the picture.
- ▷ To change the initial settings (default)
 - Setting of software start-up ⇒100
 - Initial settings for acquisition ⇒101
 - Initial settings for rotation ⇒103

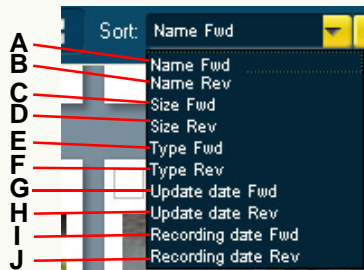
Customising picture display

Changing order of picture (Sort)

1 Click  in .



2 Select the sorting order from the pull-down menu.



- A. Files are sorted in ascending order of the alphabet and numbers in the file names.
- B. Files are sorted in descending order of the alphabet and numbers in the file names.
- C. Files are sorted in ascending order of the file size.
- D. Files are sorted in descending order of the file size.

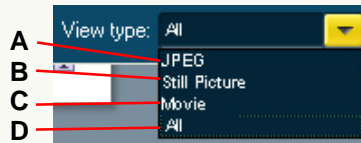
- E. Files are sorted in ascending order of the file types (ascending order of the alphabet and numbers of the extensions).
- F. Files are sorted in descending order of the file types (descending order of the alphabet and numbers of the extensions).
- G. Files are sorted in ascending order of the date of update.
- H. Files are sorted in descending order of the date of update.
- I. Files are sorted in ascending order of the date of recording (or the date of update if no information about the date of recording is available).
- J. Files are sorted in descending order of the date of recording (or the date of update if no information about the date of recording is available).

Setting types of pictures (View type)

1 Click  in **A**.



2 Select a type of picture to be displayed from the pull-down menu.




- A. Displays JPEG files (only extensions .JPG, .JPEG, and .JPE).
- B. Displays all still picture files that can be displayed by the PHOTOfunSTUDIO in thumbnail format. (⇒7)
- C. Displays all motion picture files that can be displayed by the PHOTOfunSTUDIO in thumbnail format. (⇒7)
- D. Displays all files. (⇒7)
 - Files that cannot be displayed in thumbnail format are displayed as icons.

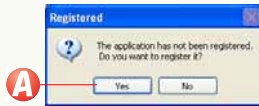
- ❖ Pictures in the types selected and folders are displayed. However, when [View subfolder] on the [View] menu is not selected, no folders are displayed.
- ❖ Pull down menu of [View Type] might be hidden according to the window size of PHOTOfunSTUDIO. In such cases, perform the settings from [View] → [View Type] of the menu.

Registering application in Launcher

The PHOTOfunSTUDIO allows up to three applications to be registered in the menu of the launcher button.

1 Click [] in order to open the pull-down menu and click the [Not registered] column.

2 Click **A**.



3 Select the application to be registered and click **B**.




The registered application starts up.

- If there are marked pictures, the [Picture selection setting] window will be displayed. And, when you click [OK], the picture will be displayed on the application. (Only for application compatible pictures.)
- When there are no marked pictures, the application simply starts up.

- If large number of pictures are selected, the confirmation message is displayed. To display all pictures, click [Yes]. If [No] is clicked, the application does not start up.

■ To activate the application registered

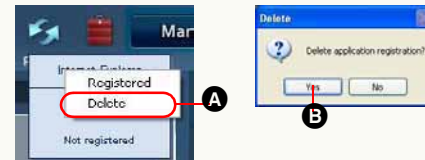
Click [] to open the pull-down menu, and click the desired application there.

- You can also start the application and display the file by dragging pictures or icons from the picture browser and dropping them on the application column in the pull-down menu.

■ To cancel the registration of an application

1) Right-click the application to be removed.

2) Click **A**.



3) Click **B**.

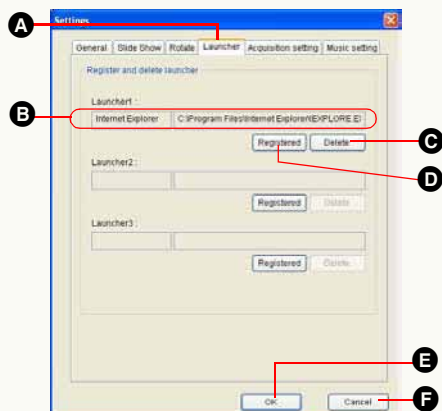
■ To replace an application registered

Right-click the application to be replaced. Click [Registered]. Subsequently, follow the normal application registration procedure.

■ To register (delete) applications from the setting window

1) Select [Tools] → [Settings] from the menu.

2) Click **A** and then click **D**.



[Open] panel appears.

3) Select the application to be registered and click [Open].

The application name and the path name appear on **B**.

4) Click **E**.

Registration is completed.

- To delete the registration, click **C**. When you click [Yes] on the confirmation message, the registration of the application will be deleted. (The application cannot be restored after this even if you click **F**.)

Managing folders

■ Setting types of folders to be displayed

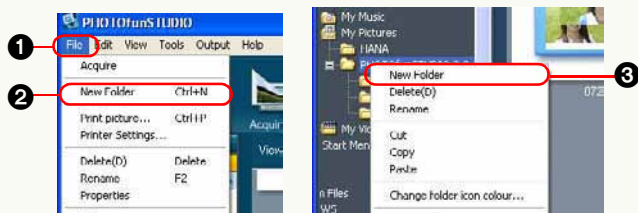
You can set the type of folder to be displayed in the folder view by selecting ① → ② from the menu. (If the type of folder ([Categorize], [Explorer], [DVD/SD card], [Music]) is clicked to be deselected, it will be hidden.)



■ Creating a new folder

You can create a new folder in [Explorer].

1) Select a folder in which a new folder is to be created. Select ① → ② from the menu.

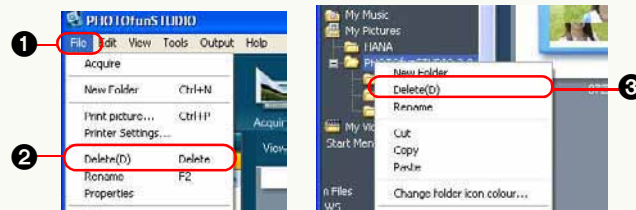


• You can also create a new folder by right-clicking the folder and selecting ③ from the context menu.

❖ You cannot create a new folder in [Categorize], [DVD/SD card] or [Music].

■ Deleting a folder

1) Select the folder to be deleted. Select ① → ② from the menu.

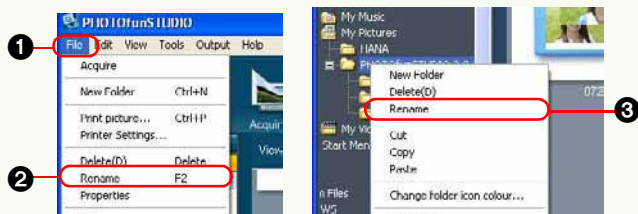


• You can also delete the folder by right-clicking the folder and clicking ③ from the context menu. (It is displayed as [Delete category] on [Categorize].)

- ❖ [My favorites] folder in [Keyword] categorization in [Categorize] cannot be deleted.
- ❖ In the case of [Categorize], the categorization information will be deleted. The picture itself registered in [Categorize] will not be deleted from the PC.
- ❖ You cannot delete folders in [DVD/SD card] or [Music].

■ Renaming a folder

1) Select the folder to be renamed. Select ❶ → ❷ from the menu.



- You may also rename the folder by right-clicking the folder and selecting ❸ from the context menu.

2) Input a new name and press [Enter] key.

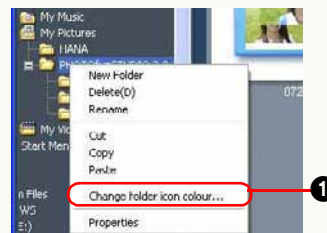
- ❖ You can only rename folders in [Keyword], [By face recognition] categorization in [Categorize]. (However, you cannot rename [My favorites] folder. If you rename a folder with the name [My favorites], the folder cannot be renamed again after that.)

You cannot rename a folder in [DVD/SD card] or [Music].

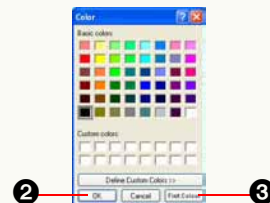
■ Changing the color of folder icon

You can change the color of the folder in [Explorer].

1) Right-click the folder that you want to change in color, and select ❶ from the context menu.



2) Select a desired color and click ❷.



- If you want to bring the color back to the original, click ❸.

- ❖ You cannot change the color of any folder in other than [Explorer].

Properties of picture file

You can confirm various pieces of picture information in [Properties] window.

- ❖ If there is no information about an item, it will be displayed as [—] etc.

1 Select a picture in the picture browser.

2 Right-click the picture and select [Properties].

The properties window for the picture file opens.

- You can also open the properties window by selecting [File] → [Properties] from the menu.
- When in the Focus mode, the same information is displayed in the information window. (You cannot open the properties window.)

■ File information



- The file name, file size, file size on the disk, file type, file location, etc. will appear.

■ Camera information



- The name of manufacturer of the digital camera used, model name, recording date, shutter speed, aperture value, etc. are displayed. However, the camera information of the picture files recorded by a digital camera made by other than Panasonic or processed may not be properly displayed.

■ Categorization information



- If categorization information is registered, each item is displayed.

■ Comment information

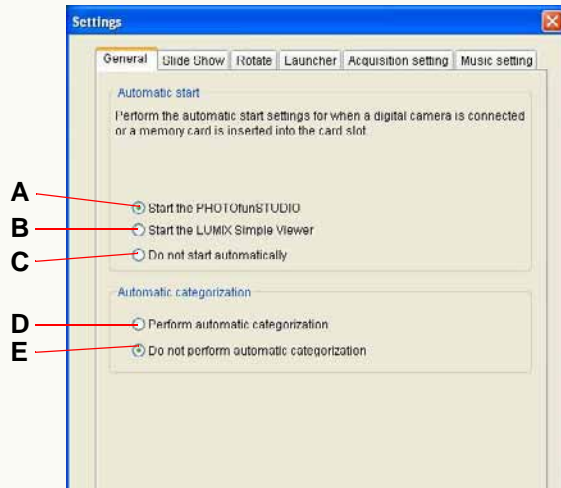


- You can directly enter and edit comments.
- Up to 256 characters can be entered.
- You can add a comment only to compatible pictures on your PC.
It is impossible to add a comment to pictures on the memory card, etc.

Setting the operations at the time of start

Auto-start of PHOTOfunSTUDIO and LUMIX Simple Viewer, as well as the auto-categorization carried out while booting, can be set.

Select [Tools] → [Settings] on the menu, and then click the [General] tab.



● To change the settings for auto start

The operations carried out when the digital camera and memory card are connected to the PC can be set.

A. PHOTOfunSTUDIO starts automatically.

B. LUMIX Simple Viewer starts automatically.

(only when LUMIX Simple Viewer is installed)

C. Disables auto-start.

❖ It is impossible to start LUMIX Simple Viewer and PHOTOfunSTUDIO simultaneously.

● Setting the auto-categorization

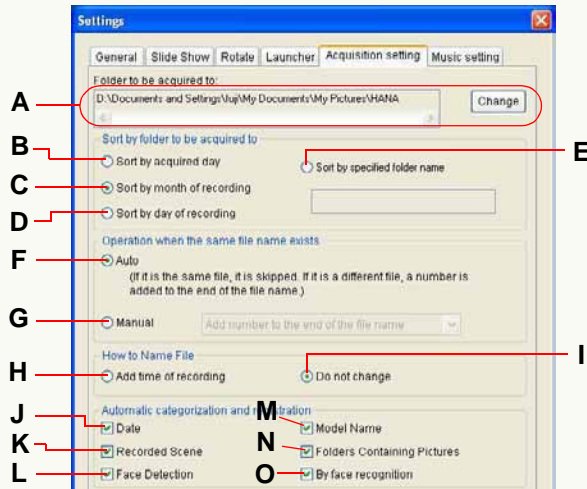
The setting of whether to categorize the pictures existing in the PC automatically at the time of starting PHOTOfunSTUDIO is possible.

D. Auto-categorization is done at every start.

E. Auto-categorization is not done at every start.

Changing the initial settings of acquisition

To change the initial settings of acquisition, select [Tools] → [Settings] on the menu, and click [Acquisition setting] tab.



● Destination folder

- A. You can change the acquisition destination folder.
Click [Change] and select a desired folder.

● Setting the distribution condition

Pictures are divided and saved in subfolder depending on the selected condition.

- B. Pictures will be saved in the subfolder of the picture acquisition date (today's date)
C. Pictures will be divided and saved depending on the picture recording month.

D. Pictures will be divided and saved depending on the picture recording date.

E. Pictures will be saved in the subfolder of entered name.

● Method of handling files with the same file name

You can select a handling method from among the following, when a file (picture) with the same name already exists in the acquisition destination folder.

- Pictures stored in acquisition destination folder and all the sub-folders are searched.
- In the case of associated files, if there is a file with the same name as one of them, both of the two undergo the same processing. (Associated file: ⇒114)

F. Modification date, time and size of file are compared. And if a same file is identified, then it is judged as an identical file and thus pictures from it are not acquired. If one of them is different from the other, then pictures are acquired by adding a numerical character in the brackets at the end of the file name.

G. Specified process is executed without comparing the files. Select the process by clicking on .

[Add number to the end of the file name]

Perform acquisition after putting the numerical character at the end of the file name.

[Skip]

File name with same name will not be acquired.

[Overwrite]

Perform overwriting after acquiring the file.

● File naming method

H. You can select this option when sorting acquisition destination folders by recording month or date. Files are named after the date and time of recording. For example, if the date and time of recording is at 12:34:56 on May 1, 2005, the picture file is named [01123456] and saved in the folder [200505] when sorted by the recording month. When sorted by the recording day, the picture file is named [123456] and saved in the folder [20050501].

- If associated files are acquired by this method, the association comes not to be established. When acquiring associated files, you are recommended to save them without changing their original file names. (Associated file: ⇒114)

I. Files are saved using their original file names.

● Setting automatic categorization

You can categorize and register pictures on a selected condition concurrently with acquisition. (This holds true only when the pictures have such information.)

J. Pictures are categorized by the date of recording.

K. Pictures are categorized by the recording scene.

L. Pictures are categorized based on the number of persons whose faces are detected.

M. Pictures are categorized by the model name of the digital camera.

N. Pictures are categorized by the folder where the pictures are acquired.

O. Pictures are categorized by face (face recognition).

❖ All items are checked by default.

❖ Categorization by keyword ([My favorites], [Pictures acquired ×××(date)]) is executed at all times. This setting cannot be canceled.

- [My favorites]: The pictures set to "FAVORITE" by a compatible digital camera are categorized by keyword [My favorites].

- [Pictures acquired ×××(date)]: All acquired pictures are categorized by keyword [Pictures acquired ×××(date)].

❖ If pictures are recorded by digital cameras made by other than Panasonic or whose recording date is outside the 1971 to 2037 range, they may not be sorted into the acquisition destination folder by recording date or categorized by recording date.

❖ Pictures that cannot be sorted into acquisition destination folders by recording date will be saved with the original file name in the specified folder.



❖ Pictures that cannot be categorized by recording date will be registered as [Pictures with no date] in [Keyword] folder in [Categorize].

Changing the initial settings of rotation

To change the initial settings for rotation, select [Tools] → [Settings] from the menu to open the [Settings] window, and then click the [Rotate] tab.



● Setting the panel display

- A. When  is clicked, the settings window for rotation will be displayed. (⇒61)
- B. When  is clicked, the settings window will not be displayed and the rotation will be executed in the following settings.

● Setting the Exif rotation

- C. Only the Exif information of a picture is overwritten and the picture is rotated. It may not look rotated on some applications. (Picture without Exif information cannot be rotated.)
- D. The picture data itself is rotated. However, the picture quality may be deteriorated because the picture will be recompressed.

● Setting the rotating direction

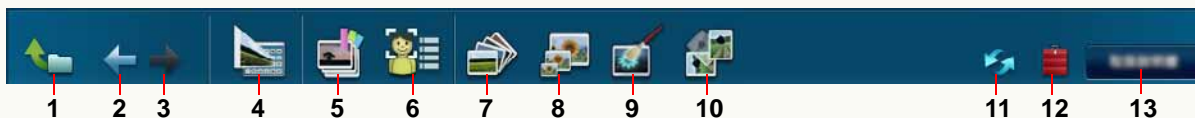
- E. Rotates the object 90° counter-clockwise.
- F. Rotates the object 90° clockwise.

● Setting the saving method

- G. The rotated picture is saved with the same file name as the original picture by overwriting it.
- H. A parenthetic number will be suffixed to the file name such as [P1000123(1)].
- I. Attach file name that can be played back in digital camera. (Example: [IMGA0123])
- Note that only JPEG pictures can be played on a digital camera.

Convenient information

Tool bar



- 1** Opens the parent folder of the currently-open folder in the picture browser.
- 2** Opens the folder selected previously in the picture browser.
- 3** Opens the folder selected next in the picture browser.
- 4** Acquire the picture. (⇒28)
- 5** Categorizes pictures. (⇒39)
- 6** Categorizes pictures by face (face recognition). (⇒44)
- 7** Plays back a slide show. (⇒34)
- 8** Executes picture processing, e.g. resizing, format conversion, and date burn-in. (⇒51)
- 9** Starts the retouch function. (⇒63)
- 10** Rotates the picture. (⇒61)
- 11** Refreshes the picture browser and the folder view. (⇒26)
- 12** Launches an application registered. (⇒94)
- 13** Starts the operating instructions on the PC.

Picture browser view setting area



- 1** Selects the display format (mode) of the picture browser. (⇒14)
- 2** Selects the order of picture display. (⇒92)
- 3** Selects a type of pictures to be displayed. (⇒93)

Status bar



1

2

3

- 1** Number of files marked
- 2** Number of files selected

- 3** Total number of files in a selected folder

Output view



1



2



3



4



5



6



7

1 Prints pictures. ([⇒74](#))

2 Attaches pictures to an e-mail. ([⇒80](#))

3 Sets a picture as a Windows® wallpaper. ([⇒83](#))

4 Writes pictures onto the memory card. ([⇒85](#))

5 Writes pictures to a CD or DVD. ([⇒87](#))

6 Upload motion picture to YouTube. ([⇒89](#))

7 Sets print setting (DPOF setting) to pictures in a memory card. ([⇒84](#))

Menu

■ [File] menu

File	
Acquire	
New Folder	Ctrl+N
Print picture...	Ctrl+P
Printer Settings...	
Delete(D)	Delete
Rename	F2
Properties	
Exit	

[Acquire]

Acquires pictures. (⇒28)

[New Folder]

Creates a new folder. (⇒96)

[Print picture]

Pictures can be printed. (⇒74)

[Printer Settings]

The [Print Setup] dialogue is displayed to set the printer type and paper size.

[Delete]

Deletes a selected picture or folder.

[Rename]

Changes the name of a selected picture or folder.

[Properties]

Displays the information of a picture or folder being selected. (⇒98)

[Exit]

Exits PHOTOfunSTUDIO. (⇒12)

■ [Edit] menu

Edit	
Cut	Ctrl+X
Copy	Ctrl+C
Paste	Ctrl+V
Select All	Ctrl+A
Deselect All	
Invert Selection	
Mark on/off	Ctrl+M
Cancel all marks	
Copying marked files...	
Moving marked files...	

[Cut]

Cuts the selected picture or folder.

[Copy]

Copies the selected picture or folder.

[Paste]

Pastes the picture or folder that has been copied or cut.

[Select All]

Selects all the pictures displayed in the picture browser.

[Deselect All]

Deselects all the pictures selected.

[Invert Selection]

Deselects the pictures selected, and selects the pictures not selected while the pictures are displayed in the picture browser.

[Mark on/off]

Reverses the marks on the selected pictures. When marks are set on the pictures, the pictures are unmarked. When marks are not set on the pictures, the pictures are marked.

[Cancel all marks]

Cancels the marks by deselecting all of the marked pictures.

[Copying marked files]

You can specify the destination and copy all of the marked pictures.

[Moving marked files]

You can specify the destination and move all of the marked pictures.

■ [View] menu**[Tool Bar]**

Switches between the displayed and the hidden state of the tool bar.

[Folder View]

Switches between the displayed and the hidden state of the folder view.

[Folder]

- ✓ 1 Categorize
- ✓ 2 Explorer
- ✓ 3 DVD/SD card
- ✓ 4 Music

Selects the type of folder to be displayed in the folder view. Checked folders are displayed and deselected folders are not displayed. (⇒96)

However, you cannot deselect all the folders.

[Output View]

Switches between the displayed and the hidden state of the output view.

[Status Bar]

Switches between the displayed and the hidden state of the status bar.

[View Format]

- Thumbnail(T) Ctrl+1
- Focus(O) Ctrl+2
- Full screen(A) Ctrl+3
- Calendar(C) Ctrl+4

Sets the display format of the picture browser. (⇒14)

[Sort]

- Name (ascending order)
- Name (descending order)
- Size (ascending order)
- Size (descending order)
- Type (ascending order)
- Type (descending order)
- Update date (ascending order)
- Update date (descending order)
- Recording date (ascending order)
- Recording date (descending order)

Selects the order of picture display in the picture browser. (⇒92)

[View Type]

Selects a type of pictures to be displayed in the picture browser. (⇒93)

[View subfolder]

Displays sub folders in the picture browser when this is selected.

[Go]

Switches the selected folder.

[Up]

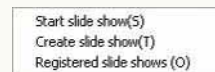
Opens the immediate upper folder when any of folders in [Explorer], [Categorize] or [DVD/SD card] are displayed on the picture browser.

[Back]

Opens the folder selected previously in the picture browser.

[Forward]

Opens the folder selected next in the picture browser.

[Slide show]**[Start slide show]**

Plays back currently displayed pictures as a slide show. (⇒34)

[Create slide show]

Creates a slide show using desired settings. (⇒34)

[Registered slide shows]

Opens saved slide shows. (⇒35)

[Refresh]

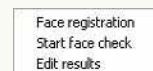
Change the status of picture browser and folder view to latest. (⇒26)

[Tools] menu**[Categorize]**

Categorizes pictures. (⇒39)

[FACE RECOG.]

Categorizes pictures by face (face recognition). (⇒44)

**[Resize]**

Changes the picture size. (⇒54)

[Format conversion]

Changes the format of pictures to another format. (⇒55)

[Batch renaming]

Changes the file names of multiple pictures at one time.
(⇒56)

[Recording date change]

Corrects the recording date information of pictures. (⇒59)

[Rotate]

Rotates pictures. (⇒61)

[Retouch]

Starts the retouch function. (⇒63)

[Burn-in]

Inserts the recording date and the title information on a picture. (⇒58)

[Create still picture]

Creates still pictures from motion pictures. (⇒60)

[Settings]

Opens the setting window of the PHOTOfunSTUDIO.

■ [Output] menu**[Print]**

Prints pictures. (⇒74)

[Mail]

Attaches pictures to an e-mail. (⇒80)

[Wallpaper]

Sets a picture as wallpaper. (⇒83)

[Memory Card]

Writes pictures onto the memory card. (⇒85)

[CD/DVD]

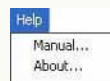
Writes pictures to a CD or DVD. (⇒87)

[YouTube]

Upload motion picture to YouTube. (⇒89)

[Print Set]

Sets print setting (DPOF setting) to pictures. (⇒84)

■ [Help] menu**[Manual]**

Starts the operating instructions (this manual) on the PC.

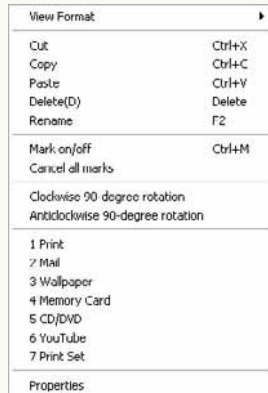
[About]

Displays the version of PHOTOfunSTUDIO.

Context menu

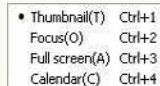
Context menu on the picture browser

The context menu is displayed by right-clicking the mouse when the picture browser is in the List mode, Focus mode or Calendar mode and the mouse pointer is on a picture displayed in it.



[View Format]

Sets the display format of the picture browser. (⇒14)



[Cut]

Cuts the selected picture or folder.

[Copy]

Copies the selected picture or folder.

[Paste]

Pastes the picture or folder that has been copied or cut.

[Delete]

Deletes the selected picture or folder.

[Rename]

Changes the name of a selected picture or folder.

[Mark on/off]

Set / cancel the mark status of selected picture.

[Cancel all marks]

Cancels the marks by deselecting all of the marked pictures.

[Clockwise 90-degree rotation], [Anticlockwise 90-degree rotation]

Rotates the selected picture to the right (clockwise) or left (counter-clockwise) by 90°.

- Only JPEG or TIFF format pictures with Exif information can be handled.

[Print]

Prints pictures. (⇒74)

[Mail]

Attaches pictures to an e-mail. (⇒80)

[Wallpaper]

Sets a picture as wallpaper. (⇒83)

[Memory Card]

Writes pictures onto the memory card. (⇒85)

[CD/DVD]

Writes pictures to a CD or DVD. (⇒87)

[YouTube]

Upload motion picture to YouTube. (⇒89)

[Print Set]

Sets print setting (DPOF setting) to pictures. (⇒84)

[Properties]

Displays the information about a selected picture or folder.
(⇒98)

Context menu on the folder view

■ Context menu on [Categorize]

This context menu is displayed by right-clicking the mouse when the mouse pointer is on a folder name in [Categorize].

Rename
Delete category(D)

[Rename]

Change the selected category name. (⇒47)

[Delete category]

Deletes a selected categorization folder from the database.
(⇒49)

■ Context menu on [Explorer]

This context menu is displayed by right-clicking the mouse when the mouse pointer is on a folder name in [Explorer].

New Folder
Delete(D)
Rename
Cut
Copy
Paste
Change folder icon colour...
Properties

[New Folder]

Creates a new folder. (⇒96)

[Delete]

Deletes the folder. (⇒96)

[Rename]

Changes the folder name. (⇒97)

[Cut]

Cuts the folder.

[Copy]

Copies the folder.

[Paste]

Pastes the folder that has been copied or cut.

[Change folder icon colour]

Changes the color of the folder icon. (⇒97)

[Properties]

Displays the information about a selected folder.

Troubleshooting (Q&A)

Q (Question)	A (Answer)
Even when your digital camera and PC are connected using the USB connection cable, the PC does not recognize the digital camera.	Is any memory card inserted into the digital camera? Depending on the digital camera, it becomes necessary to set the digital camera to be connected with the PC. For details, refer to the operating instructions for the digital camera.
Pictures cannot be displayed in the Focus mode or the Full Screen mode although they can be displayed in thumbnails in the List mode.	Even if the pictures with thumbnail picture as Exif data exceed the applicable maximum file size, they can be displayed in thumbnails only in the List mode.
No folder in any network computer can be opened in the [Explorer] of the folder view.	Assign a network drive to the folder you want to open to make it possible to access it by a drive letter (F drive, Z drive, etc.).
There are two files with the same name.	Two files associated with each other (associated files) have the same name except for the extension. (⇒ 114) If the association with one another comes not to be established, they come not be reproduced by the digital camera in some cases.
Even after a motion picture is deleted, a still picture identical to the motion picture remains.	When you record motion pictures with a digital camera, both motion pictures (MOV file) and still pictures (JPEG file) are recorded. Even when these associated files exist, only selected pictures can be deleted by PHOTOfunSTUDIO. (If you want to delete both files, then please delete each one individually.)
Pictures in the memory card cannot be deleted.	You cannot delete pictures if the write-protect switch on the memory card is set to [LOCK].

Q (Question)	A (Answer)
Pictures cannot be categorized. Registered categorization item can not be displayed.	The picture control information file may be destroyed. In such case, delete the picture control information file by selecting [start] → [All Programs] → [Panasonic] → [PHOTOfunSTUDIO] → [Delete picture management information], and categorize pictures again.
Cannot write to CD/DVD.	To use the write to CD/DVD function in PHOTOfunSTUDIO, a CD/DVD drive that is compatible with the Windows® standard CD/DVD writing wizard is necessary. If the [Recording] tab is not displayed in [Properties] of your CD/DVD drive, the drive is not compatible with the CD/DVD writing wizard and cannot be used.
Uploading to YouTube cannot be performed properly.	Confirm that log in information (user name or password) is correct. Confirm that the PC is connected to the Internet. Confirm that the resident software (such as anti-virus software and the firewall, etc.) is not blocking access to YouTube. Check the YouTube site.

Glossary

● Exif

Exif is an abbreviation for Exchangeable Image File Format.

This format embeds information other than a picture in a JPEG or TIFF file. The thumbnail, recording date and time, digital camera name, focal length, aperture, shutter speed, white balance, GPS information (positional information) and other information can be recorded.

PHOTOfunSTUDIO is capable of automatic categorizing and printing of the recording date, using the Exif information.

● DPOF

DPOF stands for Digital Print Order Format, which is standard to record printing information to memory card. It can be used in DPOF-compliant memory card, printer.

● Exif Print (Exif2.2)

Nickname of Exif2.2

Exif2.2 refers to technology to print the data recorded with the digital still camera on the printer faithfully.

If you have an Exif2.2-compliant printer and digital camera, the printer refers to the information recorded when the picture was taken to reflect this information on prints.

● PRINT Image Matching

This is technology that enables digital cameras and printers to work together, proposed by Seiko Epson Corporation.

If you have a compliant digital still camera and printer, you can reflect the situations at the time of recording and the photographer's intention on prints more faithfully.

● Associated file

In PHOTOfunSTUDIO, two files associated with each other are called "associated files". (e.g., JPEG files and MOV files, JPEG files and TIFF files, etc.)

The two files that satisfy the following conditions are judged to be associated files.

- They exist in a folder.
- Their file names are identical except for the extension.
- Their file names are compliant with the DCF standards*.

* This software recognizes as a DCF-compliant file any file with a file name composed of a base name of 8 single-byte characters and an extension of 3 single-byte characters, and with a base name whose first 4 digits consists of single-byte uppercase alphanumerics or "_" and last 4 digits are a number from 0001 to 9999. (DCF, which is an abbreviation of the Design rule for Camera File system, is a record format compliant to the file system standard of Japan Electronics and Information Technology Industries Association (JEITA).)

