

9 Changing the main unit and remote control mode

The remote control and main unit are factory-set to "REMOTE 1" mode. If you find the remote control unintentionally also controls other equipment, you can switch to operate in "REMOTE 2" mode.

- To switch to "REMOTE 2" mode (by main unit only)**
- ① Press [FM/AM/AUX] to select "AUX".
 - ② Press and hold [FM/AM/AUX] and then press [2] until "REMOTE 2" is displayed.
 - ③ Press and hold [OK] and [2] for at least 2 seconds.
- To return to "REMOTE 1" mode**
- Repeat the steps (➡ left) but replace [2] with [1]. ("REMOTE 1" will be displayed.)

10 Troubleshooting guide

Before requesting service, make the following checks. If you are in doubt about some of the check points, or if the remedies indicated in the chart do not solve the problem, consult your dealer for instructions.

Common problems

Incorrect display or play will not start

- You have not inserted the disc properly. Insert it correctly.
- The disc is scratched or dirty (Tracks skipped).
- There is moisture on the lens. Wait for about an hour and then try again.

MP3 cannot be read

- You may not be able to play MP3 if you have copied a multi-session disc that has no data between sessions.
- When creating a multi-session disc, it is necessary to close the session.
- The amount of data on the disc is too small. Set the amount of data to above 5 MB.
- Noise is heard or no sound**
- While playing MP3, noise may occur if the recording is poor.
- Keep this unit away from mobile phones if the interference is apparent.
- Turn the volume up.
- Switch the unit off, check and correct the connection and then switch the unit on. Causes include straining of the speakers through excessive volume or power and using the unit in a hot environment.

Humming heard during play

- An AC mains lead or fluorescent light is near the cords. Keep other appliances and cords away from this unit's cables.

A beat sound or noise is heard while receiving radio broadcast

- Switch the television or other audio player off or separate it from the unit.
- Switch the portable audio player off if connected to the AUX port.

A low hum or noise is heard during AM broadcast

- Keep the antenna away from other cables and cords.
- Keep the AM antenna away from the unit.

The picture on the television near the unit disappears or stripes appear on the screen

- The location and orientation of the antenna are incorrect.
- The television antenna wire is too close to the unit. Separate the antenna wire of the television from the unit.

No response when remote control buttons are pressed

- Check that the batteries are inserted correctly (➡ Section 2).

Display

"---"

- You plugged the AC mains lead in for the first time or there was a power failure recently. Set the time (➡ Section 6).

"ADJUST CLOCK"

- Clock is not set. Adjust the clock accordingly.

"ADJUST TIMER"

- Play timer is not set. Adjust the play timer accordingly.

"PGM FULL"

- The number of programmed tracks is limited to 24. No further tracks can be programmed.

"NO PLAY"

- A CD-ROM disc that is not in CD-DA or MP3 format is inserted. It cannot be played.

"ERROR"

- Incorrect operation is performed. Read the instructions and try again.

"F61" or "F76"

- There is a power supply problem. Consult the dealer.

"AUTO OFF"

- The unit has been left unused for about 29 minutes and will shut down in a minute. Press any button to cancel it.

"ILLEGAL OPEN"

- Sliding door is not in correct position. Turn the unit off and on again.

"NODEVICE"

- The iPod/iPhone device is not inserted correctly. Read the instructions and try again (➡ Section 8).

"REMOTE 1"

- The main unit is in "REMOTE 1" mode. Switch the remote control to "REMOTE 1" mode (➡ Section 9).

"REMOTE 2"

- The main unit is in "REMOTE 2" mode. Switch the remote control to "REMOTE 2" mode (➡ Section 9).

iPod/iPhone

iPod/iPhone does not turn on

- Verify that the iPod/iPhone battery is not depleted before connecting it to the unit.
- Before inserting the iPod/iPhone into the dock, turn both the unit and the iPod/iPhone off. Turn the power on and select the appropriate source.

No sound is heard from the speakers

- The iPod/iPhone is not inserted correctly into the dock. Turn the iPod/iPhone off and remove it from the dock connector. Reinsert it and turn it on again.
- Make sure that the iPod/iPhone is actually playing something.
- Adjust the volume.

Distorted sound or the sound level is too low

- Make sure the equalizer function of the iPod/iPhone is turned off.

iPod/iPhone cannot be controlled by the remote control or main unit

- Make sure the iPod/iPhone is inserted properly into the dock.
- Check the dock connection and make sure that iPod/iPhone is selected as the source of music (➡ Section 8).

iPod/iPhone does not charge

- Check all connections (➡ Section 1, 8).

11 Specifications

AMPLIFIER SECTION

RMS Output Power Stereo mode

Front Ch (both ch driven)
5 W per channel (6 Ω), 1 kHz, 10 % THD

Phone jack

Terminal Stereo, 3.5 mm jack
Output level (CD, 1 kHz, -20 dB)
max. 0.385 mW + 0.385 mW, 32 Ω

Aux (Rear)

Sensitivity
Normal level 504 mV, 12.4 kΩ
High level 100 mV, 12.4 kΩ
Terminal Stereo, 3.5 mm jack

TUNER SECTION

Preset Memory FM 30 stations
AM 15 stations

Frequency Modulation (FM)

Frequency range
87.50 MHz to 108.00 MHz (50 kHz step)

Antenna terminals 75 Ω (unbalanced)

Amplitude Modulation (AM)

Frequency range
522 kHz to 1629 kHz (9 kHz step)
520 kHz to 1630 kHz (10 kHz step)

DISC SECTION

Disc played [8 cm or 12 cm]

- (1) CD-Audio (CD-DA)
 - (2) CD-R/RW (CD-DA, MP3)
 - (3) MP3*
- * MPEG-1 Layer 3, MPEG-2 Layer 3

Pick up

Wavelength 785 nm
Laser power CLASS 1

Audio Output (Disc)
Number of channels FL, FR, 2 channel

SPEAKER SECTION

Type 1 way, 1 speaker system (Bass reflex)

Speaker unit(s)

Full range 8 cm Cone type

Impedance 6 Ω

Output sound pressure 83 dB/W (1.0 m)

Frequency range
60 Hz to 25 kHz (-16 dB)
90 Hz to 22 kHz (-10 dB)

GENERAL

Power supply AC 220 V to 240 V, 50 Hz

Power consumption 18 W

Dimensions (W x H x D)

384 mm x 214 mm x 112 mm
(D = 69 mm minimum)
(D = 147 mm tray open)

Mass Approx. 2.1 kg

Operating temperature range 0 °C to +35 °C

Operating humidity range 35 % to 80 % RH (no condensation)

Power consumption in standby mode:
0.3 W (approx.)

- Specifications are subject to change without notice.
- Total harmonic distortion is measured by the digital spectrum analyser.

12 Safety precautions

Placement

Set the unit up on an even surface away from direct sunlight, high temperatures, high humidity, and excessive vibration. These conditions can damage the cabinet and other components, thereby shortening the unit's service life.

Do not place heavy items on the unit.

Voltage

Do not use high voltage power sources. This can overload the unit and cause a fire.

Do not use a DC power source. Check the source carefully when setting the unit up on a ship or other place where DC is used.

AC mains lead protection

Ensure the AC mains lead is connected correctly and not damaged. Poor connection and lead damage can cause fire or electric shock. Do not pull, bend, or place heavy items on the lead.

Grasp the plug firmly when unplugging the lead. Pulling the AC mains lead can cause electric shock.

Do not handle the plug with wet hands. This can cause electric shock.

Foreign matter

Do not let metal objects fall inside the unit. This can cause electric shock or malfunction.

Do not let liquids get into the unit. This can cause electric shock or malfunction. If this occurs, immediately disconnect the unit from the AC mains supply and contact your dealer.

Do not spray insecticides onto or into the unit. They contain flammable gases which can ignite if sprayed into the unit.

Service

Do not attempt to repair this unit by yourself. If sound is interrupted, indicators fail to light, smoke appears, or any other problem that is not covered in these instructions occurs, disconnect the AC mains lead and contact your dealer or an authorized service centre. Electric shock or damage to the unit can occur if the unit is repaired, disassembled or reconstructed by unqualified persons.

Extend operating life by disconnecting the unit from the AC mains if it is not to be used for a long time.

13 Memory reset (Initialization)

When the following situations occur, reset the memory:

- There is no response when buttons are pressed.
- You want to clear and reset the memory contents.

To reset memory

- ① Disconnect the AC mains lead. (Wait for at least 3 minutes before proceeding to step 2.)
- ② While pressing and holding down [⏻] on the main unit, reconnect the AC mains lead. "-----" appears on the display.
- ③ Release [⏻]. All the settings are returned to the factory preset. You will need to reset the memory items.

Maintenance

■ Pull out the power plug from the outlet for maintenance beforehand and then wipe it using a soft and dried cloth.

- When dirt is heavy, wring the cloth moistened in water tightly to wipe the dirt, and then wipe it with a dried cloth.

- Do not use solvents such as benzene, thinner, alcohol and detergent, which may deform the coating of the outer case.

- When using a chemical cloth, follow the precautions.

Care on the CD lens

- Clean the lens regularly to prevent malfunctions. Use a blower to remove dust and a cotton swab if it is extremely dirty.
- Do not use the lens cleaner of the CD type.



"Made for iPod" means that an electronic accessory has been designed to connect specifically to iPod and has been certified by the developer to meet Apple performance standards.

"Works with iPhone" means that an electronic accessory has been designed to connect specifically to iPhone and has been certified by the developer to meet Apple performance standards.

Apple is not responsible for the operation of this device or its compliance with safety and regulatory standards.

iPod is a trademark of Apple Inc., registered in the U.S. and other countries. iPhone is a trademark of Apple Inc.

-If you see this symbol-

Information on Disposal in other Countries outside the European Union



This symbol is only valid in the European Union. If you wish to discard this product, please contact your local authorities or dealer and ask for the correct method of disposal.

Notes on CD-R and CD-RW

- This unit can play CD-R and CD-RW recorded with CD-DA or MP3.
- Use an audio recording disc for CD-DA and finalise* it when you finish recording.
- * A process performed after recording that enables CD-R or CD-RW players to play audio CD-R and CD-RW.
- The unit may not be able to play some discs due to the condition of the recording.
- Do not use irregularly shaped CDs.
- Do not attach extra labels and stickers.
- Do not use CDs with labels and stickers that are coming off or with excessive adhesive under the labels and stickers.
- Do not attach scratch-proof covers or any other kind of accessories.
- Do not write anything on the CDs.
- Do not clean CDs with liquids (Wipe with a soft and dried cloth).

Creating MP3 files playable on this unit

- Maximum number of tracks and albums: 999 tracks and 255 albums.
- Compatible compression rate: Between 64 kbps and 320 kbps (stereo). 128 kbps (stereo) is recommended.
- Disc formats: ISO9660 level 1 and level 2 (except for extended formats).
- The time for reading TOC depends on the number of the tracks, folders or folder structures.

Limitations on MP3

- This unit is compatible with multi-sessions and it takes more time to start playing.
- This unit cannot play files recorded using packet write.
- If the disc includes both MP3 and normal audio data (CD-DA), the unit plays the type recorded in the inner part of the disc.
- If the disc includes both MP3 and other types of audio data (e.g. WMA or WAV), the unit plays only the MP3.
- Depending on how you create the MP3 files, they may not play in the order you numbered them or may not play at all.

Notes on iPhone:

- All phone features can only be controlled by the iPhone's touch screen.
- The unit does not display incoming calls or the phone status.
- The ringtone of incoming call can be heard from the iPhone's speaker. When the unit is in iPod/iPhone mode, the ringtone can also be heard from the unit's speakers.
- The voice of caller cannot be heard on the unit's speakers. The user can use the iPhone internal microphone though.
- Connecting or disconnecting the iPhone from the unit will not cancel a call.
- There is no Apple Inc. specification that will guarantee the iPhone responses (➡ Section 8). iPhone responses may vary on new iPhone models or iPhone new software updates.

Compatible iPod

Name	Memory size
iPod nano 5th generation (video camera)	8 GB, 16 GB
iPod touch 2nd generation	8 GB, 16 GB, 32 GB, 64 GB
iPod classic	120 GB, 160 GB (2009)
iPod nano 4th generation (video)	8 GB, 16 GB
iPod classic	160 GB (2007)
iPod touch 1st generation	8 GB, 16 GB, 32 GB
iPod nano 3rd generation (video)	4 GB, 8 GB
iPod classic	80 GB
iPod nano 2nd generation (aluminum)	2 GB, 4 GB, 8 GB
iPod 5th generation (video)	60 GB, 80 GB
iPod 5th generation (video)	30 GB
iPod nano 1st generation	1 GB, 2 GB, 4 GB
iPod 4th generation (colour display)	40 GB, 60 GB
iPod 4th generation (colour display)	20 GB, 30 GB
iPod 4th generation	40 GB
iPod 4th generation	20 GB
iPod mini	4 GB, 6 GB

Compatible iPhone

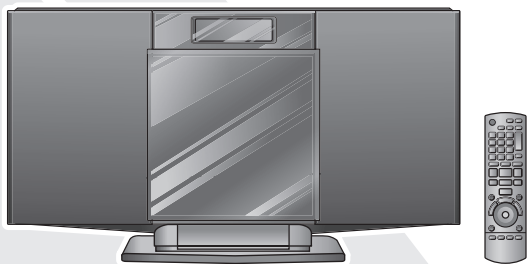
Name	Memory size
iPhone 3GS	16 GB, 32 GB
iPhone 3G	8 GB, 16 GB
iPhone	4 GB, 8 GB, 16 GB

- Compatibility depends on the software version of the iPod/iPhone.

Panasonic

Operating Instructions Compact Stereo System

Model No. **SC-HC20**



Supplied accessories

Please check and identify the supplied accessories.

- ☐ 1 AC mains lead
- ☐ 1 AM loop antenna
- ☐ 1 FM indoor antenna
- ☐ 2 Batteries
- ☐ 1 Remote control (N2QAYB000518)

- The included AC mains lead is for use with this unit only. Do not use it with other equipment.
- Do not use an AC mains lead of other equipment.

Dear customer

Thank you for purchasing this product. Before connecting, operating or adjusting this product, please read the instructions completely. Please keep this manual for future reference.

Operations in these instructions are described using remote control, but you can do the operations with the main unit if the controls are the same. Your unit may not look exactly as illustrated

Panasonic Corporation
Web Site: <http://panasonic.net>



RQTX1058-2B

H0310HU2050

© Panasonic Corporation 2010

CAUTION!

THIS PRODUCT UTILIZES A LASER. USE OF CONTROLS OR ADJUSTMENTS OR PERFORMANCE OF PROCEDURES OTHER THAN THOSE SPECIFIED HEREIN MAY RESULT IN HAZARDOUS RADIATION EXPOSURE. DO NOT OPEN COVERS AND DO NOT REPAIR YOURSELF. REFER SERVICING TO QUALIFIED PERSONNEL.

WARNING:

TO REDUCE THE RISK OF FIRE, ELECTRIC SHOCK OR PRODUCT DAMAGE, ● DO NOT EXPOSE THIS APPARATUS TO RAIN, MOISTURE, DRIPPING OR SPLASHING AND THAT NO OBJECTS FILLED WITH LIQUIDS, SUCH AS VASES, SHALL BE PLACED ON THE APPARATUS. ● USE ONLY THE RECOMMENDED ACCESSORIES. ● DO NOT REMOVE THE COVER (OR BACK); THERE ARE NO USER SERVICEABLE PARTS INSIDE. REFER SERVICING TO QUALIFIED SERVICE PERSONNEL.

The socket outlet shall be installed near the equipment and easily accessible. The mains plug of the power supply cord shall remain readily operable. To completely disconnect this apparatus from the AC Mains, disconnect the power supply cord plug from AC receptacle.

THIS UNIT IS INTENDED FOR USE IN MODERATE CLIMATES.



Inside of product

CAUTION - CLASS 1M INVISIBLE LASER RADIATION WHEN OPEN AND INTERLOCKS DEFEATED. DO NOT VIEW DIRECTLY WITH OPTICAL INSTRUMENTS. RECHERCHES-1-42/CLASS 1M.

WARNING - KLASS 1M OSYMLIG LASERSTRÅLNING NÄR DENNA DEL ÄR ÖPPNAD OCH SPÄRREN ÄR URKOPPLAD. RECHERCHES-1-42/CLASS 1M.

VARO - LUOKAN 1M KÄSIÄLÄITÄVÄ LASERISÄTEILÄÄ. ÄLÄ KATSO OPTISELLA LAITTEELLA SUORAAN SÄTEESEEN. RECHERCHES-1-42/CLASS 1M.

VORSICHT - UNGESCHÜTZTE LASERSTRALUNG KLASSE 1M. NICHT ABBECKUNG GEÖFFNETE UND SICHERHEITSEINGEBELUNGEN. RECHERCHES-1-42/CLASS 1M.

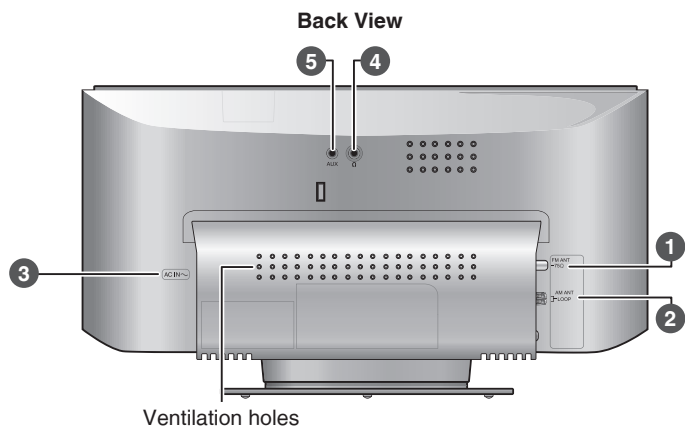
ATTENTION - RAYONNEMENT LASER INVISIBLE. CLASSE 1M. EN CAS D'OUVERTURE ET LORSQUE LA SÉCURITÉ EST NEUTRALISÉE. NE PAS REGARDER DIRECTEMENT À L'AIDE D'INSTRUMENTS OPTIQUES. RECHERCHES-1-42/CLASS 1M.

注意 - 开封時及联失效解除时有不可见激光辐射。避免光束照射。

注意 - ここを開き、安全インターロックを解除すると不可視レーザー光が出ます。ビームを見たり、触れたりしないでください。

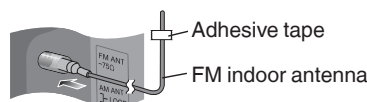
RQL50418

1 Connections

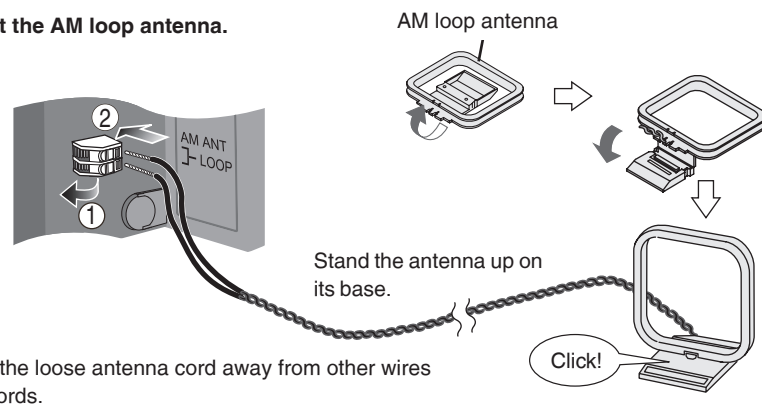


1 Connect the FM indoor antenna.

- Tape the antenna to a wall or column, in a position with the least amount of interference.



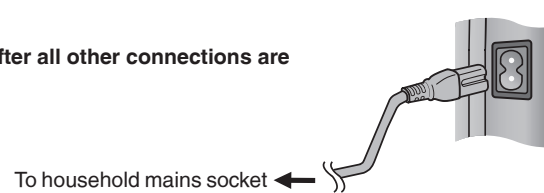
2 Connect the AM loop antenna.



- Keep the loose antenna cord away from other wires and cords.

3 Connect the AC mains lead.

Connect the AC mains lead after all other connections are complete.



4 Headphones (not included)

Reduce the volume level and connect the headphones.

- Plug type: 3.5 mm stereo
- Avoid listening for prolonged periods of time to prevent hearing damage.
- Excessive sound pressure from earphones and headphones can cause hearing loss.
- Listening at full volume for long periods may damage the user's ears.
- Be sure to use the supplied or recommended headphones or earphones.

5 Portable audio equipment (during AUX mode)

- Plug the audio cord into the AUX jack. Plug type: 3.5 mm stereo
- Press [AUX] and start playback from the portable audio source.

You can select the sound input level of the portable audio equipment. Press [INPUT LEVEL] repeatedly to select "HIGH" or "NORMAL".

- Switch the equalizer off or turn the volume of the portable equipment down to reduce the input signal. High level of input signal will distort the sound.
- For details, refer to the instruction manual of the other equipment.
- Cords and equipment are not included.

■ Notes on speakers

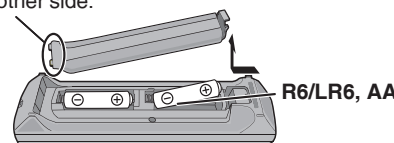
- These speakers do not have magnetic shielding. Do not place them near televisions, personal computers or other devices easily influenced by magnetism.
- The speaker nets cannot be removed.

■ Placing the unit

- Keep a minimum of 50 mm clearance space at the front of the unit to prevent iPod/iPhone or the unit from dropping.

2 Preparing the remote control

Place this side in before the other side.



■ Batteries

- Use a manganese dry battery or an alkaline dry battery.
- Insert so the poles (+ and -) match those in the remote control.
- Remove if the remote control is not going to be used for a long period of time.
- Store in a cool and dark place.
- Do not heat or expose to flame.
- Do not leave the batteries in an automobile exposed to direct sunlight for a long period of time with doors and windows closed.
- Mishandling of batteries in the remote control can cause electrolyte leakage, which may cause a fire.

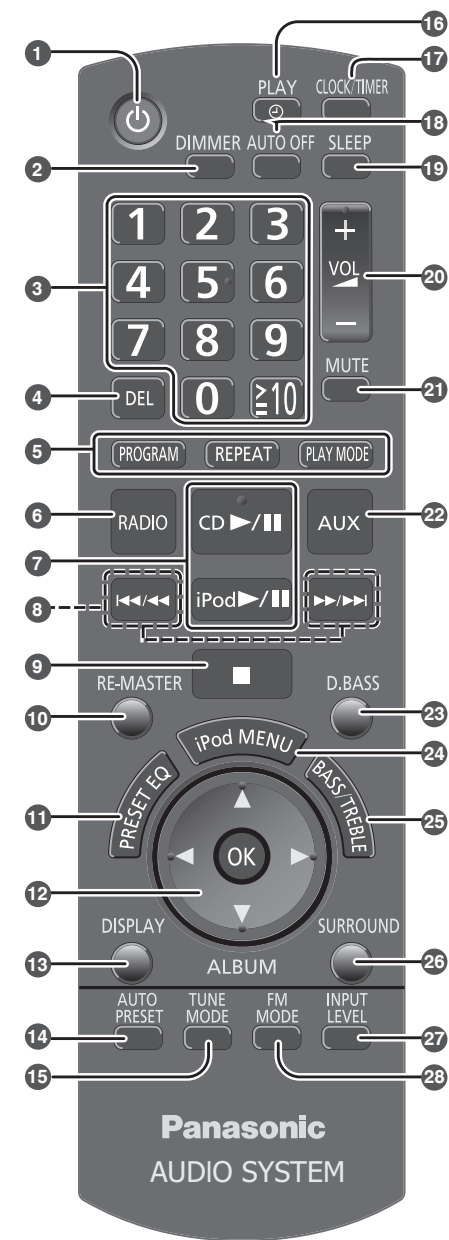
■ Do not:

- mix old and new batteries.
- use different types of batteries at the same time.
- take apart or short-circuit the batteries.
- attempt to recharge alkaline or manganese batteries.
- use the batteries if the coverings have been peeled off.

3 Control guide

Remote control

- Refer to the numbers in parentheses for section reference.



1 Standby/on switch [⏻], [⏻/⏹] (4, 6, 13)

Press to switch the unit from on to standby mode or vice versa. In standby mode, the unit is still consuming a small amount of power.

2 [DIMMER]

Dims the display panel. Press again to cancel.

3 Numeric buttons [1-9, 0, ≥10] (4, 5, 9)

To select a 2-digit number

e.g. 16: [≥10] → [1] → [6]

To select a 3-digit number

e.g. 226: [≥10] → [2] → [2] → [6]

4 [DEL] (4)

5 [PROGRAM] (4, 5)

[REPEAT] (4)

[PLAY MODE] (4, 5)

6 [RADIO] (5)

7 [CD ▶/⏮] (4)

[iPod ▶/⏮] (8)

8 [◀◀/▶▶], [▶▶/▶▶] (4, 5, 8)

9 [■] (4, 8)

10 [RE-MASTER] (7)

11 [PRESET EQ] (7)

12 [▲, ▼], [◀, ▶] (4, 6, 7, 8)

[OK] (4, 6, 8, 9)

13 [DISPLAY] (4)

14 [AUTO PRESET] (5)

15 [TUNE MODE] (5)

16 [⏻, PLAY] (6)

17 [CLOCK/TIMER] (6)

18 [AUTO OFF]

This function allows you to turn the unit off (except in radio mode) after the unit is left unused for about 30 minutes. Press twice to turn it on.

19 [SLEEP] (6)

20 [+ VOL, -, -], [- VOLUME +]

21 [MUTE]

Mutes the sound. Press again to cancel. "MUTE" is also cancelled when the volume is adjusted or the unit is turned off.

22 [AUX] (1)

23 [D.BASS] (7)

24 [iPod MENU] (8)

25 [BASS/TREBLE] (7)

26 [SURROUND] (7)

27 [INPUT LEVEL] (1)

28 [FM MODE] (5)

29 [FM/AM/AUX] (5, 9)

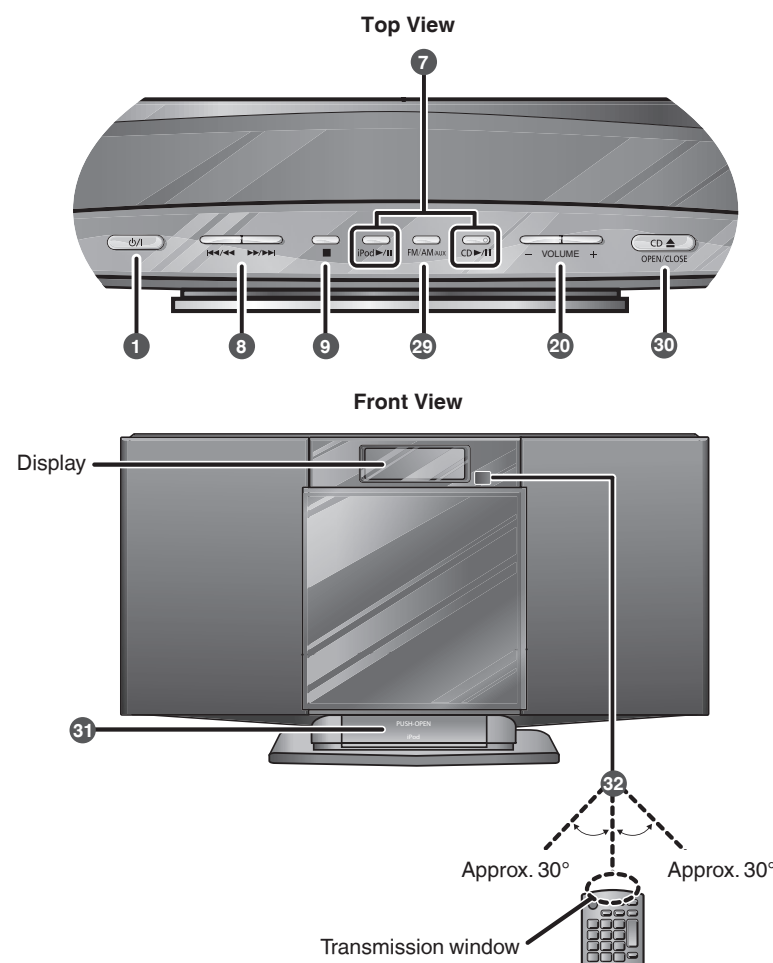
30 [CD ▲, OPEN/CLOSE] (4)

31 iPod/iPhone dock (8)

32 Remote control signal sensor

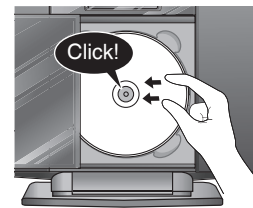
Aim the remote control at the sensor, avoiding obstacles, at a maximum range of 7 m directly in front of the unit.

Main unit



4 Disc operations

Basic play



- Press [⏻] to turn the unit on.
- Press [CD ▲, OPEN/CLOSE] on the main unit to open the sliding door.
- Tilt the disc into the disc tray under the sliding door and then set the CD in place.
- Press [CD ▲, OPEN/CLOSE] to close the sliding door.
- Keep fingers away from the sliding door when it is closing to avoid possible minor injuries.
- Damage may occur if the sliding door is forced closed.
- Be careful of CD hitting the sliding door while being removed.

Stop	Press [■].
Pause	Press [CD ▶/⏮]. Press again to resume play.
Skip track	Press [◀◀/▶▶] or [▶▶/▶▶].
Search the current track (CD)	Press and hold [◀◀/▶▶] or [▶▶/▶▶].
Skip album (MP3)	Press [▲, ▼].
Direct access play (Play starts with the track you select.)	CD: Press the numeric buttons to select the track. MP3: ① Press [▲, ▼] to select the album. ② Press [▶▶/▶▶] once and then the numeric buttons to select the track.

Display function

Press [DISPLAY] repeatedly during play or pause to view the current track's information.

- Maximum number of displayable characters: approximately 30
- This unit supports ver. 1.0 and 1.1 ID3 tags. Text data that is not supported will not be displayed.

Program play

Enables you to program up to 24 tracks.

- Press [CD ▶/⏮] and then [■].
- Press [PROGRAM].
- CD: ① Press the numeric buttons to select the track.
To program more tracks, continue by pressing the numeric buttons.
② Press [OK] or [CD ▶/⏮] to start play.

- MP3: ③ Press [▲, ▼] to select the album.
④ Press [▶▶/▶▶] once and then the numeric buttons to select the track.
⑤ Press [OK].
To program more tracks, repeat step ③ to ⑤.
⑥ Press [CD ▶/⏮] to start play.

Cancel program mode	Press [PROGRAM] in the stop mode to clear "PGM" indicator from the display.
Replay the program	Press [PROGRAM] in the stop mode and then [CD ▶/⏮].
Check program contents	Press [◀◀/▶▶] or [▶▶/▶▶] when "PGM" is displayed in the stop mode. To check while programming, press [PROGRAM] twice after "PGM" appears and then press [◀◀/▶▶] or [▶▶/▶▶].
Delete last programmed track	Press [DEL] in the stop mode.
Clear all programmed tracks	Press [■] in the stop mode. "CLR ALL" is displayed. Within 5 seconds, press the button again to clear all tracks.

- The program memory is cleared when you open the sliding door.

Play Mode function

- Press [CD ▶/⏮].
 - Press [PLAY MODE] repeatedly to select the following modes.
- | Mode | To play |
|-------------------|--|
| 1-TRACK | one selected track on the disc. Press the numeric buttons to select the track. |
| 1-ALBUM (MP3) | one selected album on the disc. Press [▲, ▼] to select the album. |
| RND RANDOM | a disc randomly. |
| 1-ALBUM RND (MP3) | all tracks in one selected album randomly. Press [▲, ▼] to select the album. |
- During random play, you cannot skip to the previous track.
 - The current play mode is cleared when you open the sliding door.
 - To repeat program play or selected play mode, press [REPEAT]. Press again to cancel.

5 Radio operations (continued)

AM allocation setting

The unit may also receive AM broadcast allocated in 10 kHz step.

To change the step to 10 kHz (by main unit only)

- Press [FM/AM/AUX] to select "AM".
- Press and hold [FM/AM/AUX]. After a few seconds the display changes to display current minimum frequency.

- Continue to hold down [FM/AM/AUX]. When the minimum frequency changes, release the button.
- To return to the original step, repeat step ① to ③ (← left).
- After the setting is changed, any previously preset frequency will be cleared.

6 Timer

Setting the clock

This is a 24-hour clock.

- Press [CLOCK/TIMER] to select "CLOCK".
- Within 5 seconds, press [▲, ▼] to set the time. (Press and hold to change the time faster.)
- Press [OK].
- To display the clock, press [CLOCK/TIMER].
- Reset the clock regularly to maintain accuracy.

Play timer

You can set the timer to come on at a certain time to wake you up.

This unit offers 3 optional play timers.

- Preparation:
- Turn the unit on and set the clock (→ above).
 - Prepare the music source (disc, radio, iPod/iPhone or AUX) and set the volume.

- Press [CLOCK/TIMER] repeatedly to select play timer.
- Within 5 seconds, press [▲, ▼] to set the starting time.
- Press [OK].
- To set the finishing time, repeat step ② and ③.
- Press [⏻, PLAY] repeatedly to turn the selected play timer on.
- Press [⏻] to turn the unit off.

Change the settings	Repeat step ① to ④ (→ above).
---------------------	-------------------------------

Change the source or volume	① Press [⏻, PLAY] twice to clear ⏻PLAY indicator from the display. ② Make changes to the source or volume. ③ Perform step ⑤ and ⑥ (→ left).
Check the settings (When the unit is on or in standby mode)	Press [CLOCK/TIMER] repeatedly to select "⏻PLAY 1", "⏻PLAY 2" or "⏻PLAY 3".
Cancel	Press [⏻, PLAY] twice to clear the timer indicator from the display.

- The timer will start at the preset time, with the volume increasing gradually to the preset level.

Sleep timer

The sleep timer can turn the unit off after a set time. Press [SLEEP] to turn the sleep function on or off.

30MIN → 60MIN → 90MIN → 120MIN
← OFF (Cancelled) →

Press [SLEEP] once to check the remaining time.

- The play timer and sleep timer can be used together. The sleep timer always has the priority. Be sure not to overlap the timer settings.
- When AUTO OFF is ON and the unit is left unused for about 30 minutes, the unit will shut down even if the play time or sleep time has not expired.

7 Sound adjustment

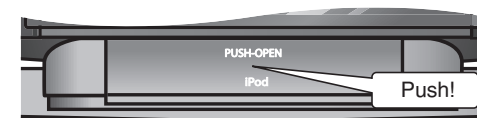
Preset EQ	Press [PRESET EQ] repeatedly to select "HEAVY", "SOFT", "CLEAR", "VOCAL" or "FLAT".
Bass or Treble	① Press [BASS/TREBLE] repeatedly to select "BASS" or "TREBLE". ② Press [▲, ▼] to adjust the level (-4 to +4).
Surround Sound	Press [SURROUND] repeatedly during play to select "ON SURROUND" or "OFF SURROUND". If interference in FM stereo reception increases, cancel the surround sound effect.
D.Bass	Press [D.BASS] repeatedly during play to select "ON D.BASS" or "OFF D.BASS".
Re-master (MP3)	Press [RE-MASTER] repeatedly during play to select "ON RE-MASTER" or "OFF RE-MASTER".

8 External unit

Enjoying audio from iPod or iPhone

Inserting or removing an iPod/iPhone

- Push to open the dock.



- Insert the suitable dock adapter (not included) for the iPod/iPhone. Insert the side of the iPod/iPhone dock adapter with the clips facing towards you first and then push the opposite side until it clicks into place.

- Connect the iPod/iPhone (not included) firmly. Be sure to remove the iPod/iPhone from its case.

To remove, simply pull the iPod/iPhone straight out to disconnect it.

- When inserting an iPod/iPhone into the unit, be sure to use the dock adapter either supplied with the iPod/iPhone or commercially available from Apple Inc.
- When not using the dock, push it back until it locks.
- Reduce the volume of the main unit to minimum before connecting or disconnecting the iPod/iPhone.

Play	Press [iPod ▶/⏮].
Pause	Press [iPod ▶/⏮] or [■].
Skip track	Press [◀◀/▶▶] or [▶▶/▶▶].
Search the current track	Press and hold [◀◀/▶▶] or [▶▶/▶▶].
Display iPod/iPhone menu/return to previous menu	Press [iPod MENU] in the play mode. (Remote control only)
Select contents from iPod/iPhone menu	Press [▲, ▼] and then [OK]. (Remote control only)

Charging the iPod/iPhone

- When iPod/iPhone is being charged in standby mode, "IPOD CHARGING" is shown on the main unit's display.
- Check iPod/iPhone to see if the battery is fully charged. If you are not using iPod/iPhone for an extended period of time after recharging has completed, disconnect it from the main unit as the battery will be depleted naturally. (Once fully recharged, additional recharging will not occur.)