

# Panasonic

Operating Instructions  
Compact Stereo System

Model No. **SC-HC25**



## Dear Customer

Thank you for purchasing this system. For optimum performance and safety, read these instructions fully before you connect, operate or adjust this system. Keep this manual for future reference.

Your system and the illustrations can look differently.

Do the procedures with the remote control. You can also use the buttons on the main unit if they are the same.

## SUPPLIED ACCESSORIES

Please check and identify the supplied accessories.

1 x AC mains lead	1 x Remote control
1 x FM indoor antenna	(N2QAYB000640)
1 x AM loop antenna	1 x Remote control battery

## SAFETY PRECAUTIONS

### Placement

Set the system up on an even surface away from direct sunlight, high temperatures, high humidity, and excessive vibration. These conditions can damage the cabinet and other components, thereby shortening the service life of the system.

Place it at least 15 cm away from wall surfaces to avoid distortion and unwanted acoustical effects. Do not place heavy items on the system.

### Voltage

Do not use high voltage power sources. This can overload the system and cause a fire.

Do not use a DC power source. Check the source carefully when setting the system up on a ship or other place where DC is used.

### AC mains lead protection

Ensure the AC mains lead is connected correctly and not damaged. Poor connection and lead damage can cause fire or electric shock. Do not pull, bend, or place heavy items on the lead.

Grasp the plug firmly when unplugging the lead. Pulling the AC mains lead can cause electric shock. Do not handle the plug with wet hands. This can cause electric shock.

### Foreign matter

Do not let metal objects fall inside the system. This can cause electric shock or malfunction.

Do not let liquids get into the system. This can cause electric shock or malfunction. If this occurs, immediately disconnect the system from the power supply and contact your dealer.

Do not spray insecticides onto or into the system. They contain flammable gases which can ignite if sprayed into the system.

### Service

Do not attempt to repair this system by yourself. If sound is interrupted, indicators fail to light, smoke appears, or any other problem that is not covered in these instructions occurs, disconnect the AC mains lead and contact your dealer or an authorised service centre. Electric shock or damage to the system can occur if the system is repaired, disassembled or reconstructed by unqualified persons.

Extend operating life by disconnecting the system from the power source if it is not to be used for a long time.

## MAINTENANCE

- To clean this system, wipe with a soft, dry cloth.
- Never use alcohol, paint thinner or benzine to clean this system.
  - Before using chemically treated cloth, read the instructions that came with the cloth carefully.

## SPECIFICATIONS

### Amplifier section

**RMS output power stereo mode**  
Front Ch (both ch driven)  
5 W per channel (6 Ω, 1 kHz, 10% THD)  
Total RMS stereo mode power 10 W

### FM/AM tuner, terminals section

**Preset station**  
FM 30 stations  
AM 15 stations

**Frequency modulation (FM)**  
Frequency range  
87.50 MHz to 108.00 MHz (50 kHz step)  
Antenna terminals 75 Ω (unbalanced)

**Amplitude modulation (AM)**  
Frequency range  
522 kHz to 1629 kHz (9 kHz step)  
520 kHz to 1630 kHz (10 kHz step)

**Headphones jack**  
Terminal Stereo, 3.5 mm jack

**AUX (rear)**  
Terminal Stereo, 3.5 mm jack

### Disc section

**Disc played (8 cm or 12 cm)**  
CD, CD-R/RW (CD-DA, MP3\* formatted disc)  
\* MPEG-1 Layer 3, MPEG-2 Layer 3

**Pick up**  
Wavelength 790 nm (CD)  
Laser power CLASS 1 (CD)

**Audio output (Disc)**  
Number of channels 2 ch (FL, FR)  
FL = Front left channel  
FR = Front right channel

### USB section

**USB port**  
USB Standard USB 2.0 full speed  
Media file format support MP3 (\*.mp3)  
USB device file system FAT 12, FAT 16, FAT 32  
USB port power 500 mA (max)

### Speaker section

**Type** 1 way, 1 speaker system (bass reflex)  
**Speaker unit(s)** Full range 8 cm cone type  
**Impedance** 6 Ω  
**Frequency range** 60 Hz to 25 kHz (–16 dB)  
90 Hz to 22 kHz (–10 dB)

### General

**Power supply** AC 220 to 240 V, 50 Hz  
**Power consumption** 19 W  
**Dimensions (W x H x D)** 400 mm x 221 mm x 110 mm  
[D = 69 mm (min)]  
[D = 149 mm (tray open)]

**Mass** 2.1 Kg  
**Operating temperature range** 0°C to +40°C  
**Operating humidity range** 35% to 80% RH (no condensation)

**Power consumption in standby mode** 0.2 W (approximate)

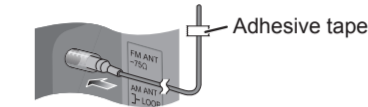
**Note:**  
1) Specifications are subject to change without notice. Mass and dimensions are approximate.  
2) Total harmonic distortion is measured by the digital spectrum analyzer.

## 1 MAKING THE CONNECTIONS

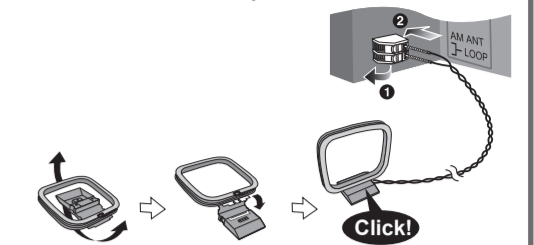
**Conserving power**  
The system consumes approximately 0.2 W when it is in standby mode. Disconnect the power supply if you do not use the system. Some settings will be lost after you disconnect the system. You have to set them again.



1 **Connect the FM indoor antenna.**  
Place the antenna where reception is best.



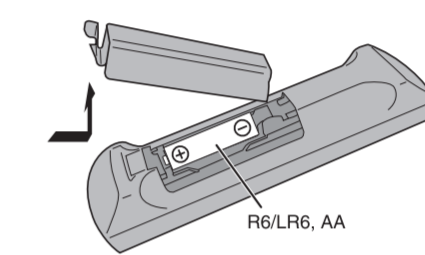
2 **Connect the AM loop antenna.**



3 **Connect the AC mains lead.**  
Use the included AC mains lead with this system only. Do not use an AC mains lead from other equipment.

**Note:**  
• These speakers do not have magnetic shielding. Do not put them near TVs, PCs or other equipment easily influenced by magnetism.  
• You cannot remove the net of the speakers.

## 2 PREPARING THE REMOTE CONTROL



Use alkaline or manganese battery.

Install the battery so that the poles (+ and –) align with those in the remote control.

Point the remote control at the remote control sensor, away from obstacles, at a maximum range of 7 m directly in front of the main unit.

**CAUTION!**  
• Do not break open or short-circuit the battery.  
• Do not charge the alkaline or manganese battery.  
• Do not use the battery if the cover has peeled off.  
• Do not heat or expose to flame.  
• Do not leave the battery(ies) in an automobile exposed to direct sunlight for a long period of time with doors and windows closed.  
• Mishandling of battery can cause electrolyte leakage, which can cause a fire.  
• Remove the battery if you do not use the remote control for a long period of time. Keep in a cool, dark area.

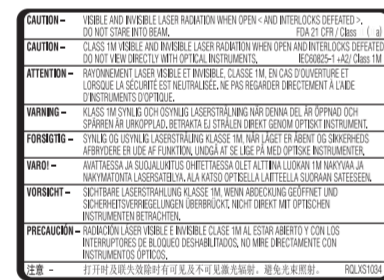
**CAUTION!**  
Danger of explosion if battery is incorrectly replaced. Replace only with the same or equivalent type recommended by the manufacturer. Dispose of used batteries according to the manufacturer's instructions.

Panasonic Corporation  
Web Site: <http://panasonic.net>

GN En  
RQTX1256-B  
L0111CH0



Bottom of product



Inside of product

**WARNING:**  
TO REDUCE THE RISK OF FIRE, ELECTRIC SHOCK OR PRODUCT DAMAGE,  
• DO NOT EXPOSE THIS APPARATUS TO RAIN, MOISTURE, DRIPPING OR SPLASHING AND THAT NO OBJECTS FILLED WITH LIQUIDS, SUCH AS VASES, SHALL BE PLACED ON THE APPARATUS.  
• USE ONLY THE RECOMMENDED ACCESSORIES.  
• DO NOT REMOVE THE COVER (OR BACK); THERE ARE NO USER SERVICEABLE PARTS INSIDE. REFER SERVICING TO QUALIFIED SERVICE PERSONNEL.

**CAUTION!**  
THIS PRODUCT UTILIZES A LASER. USE OF CONTROLS OR ADJUSTMENTS OR PERFORMANCE OF PROCEDURES OTHER THAN THOSE SPECIFIED HEREIN MAY RESULT IN HAZARDOUS RADIATION EXPOSURE. DO NOT OPEN COVERS AND DO NOT REPAIR YOURSELF. REFER SERVICING TO QUALIFIED PERSONNEL.

THIS UNIT IS INTENDED FOR USE IN MODERATE CLIMATES.

The socket outlet shall be installed near the equipment and easily accessible. The mains plug of the power supply cord shall remain readily operable. To completely disconnect this apparatus from the AC Mains, disconnect the power supply cord plug from AC receptacle.

This product may receive radio interference caused by mobile telephones during use. If such interference is apparent, please increase separation between the product and the mobile telephone.

Product identification marking is located on the bottom of unit.

**CAUTION!**  
• DO NOT INSTALL OR PLACE THIS UNIT IN A BOOKCASE, BUILT-IN CABINET OR IN ANOTHER CONFINED SPACE. ENSURE THE UNIT IS WELL VENTILATED. TO PREVENT RISK OF ELECTRIC SHOCK OR FIRE HAZARD DUE TO OVERHEATING, ENSURE THAT CURTAINS AND ANY OTHER MATERIALS DO NOT OBSTRUCT THE VENTILATION VENTS.  
• DO NOT OBSTRUCT THE UNIT'S VENTILATION OPENINGS WITH NEWSPAPERS, TABLECLOTHS, CURTAINS, AND SIMILAR ITEMS.  
• DO NOT PLACE SOURCES OF NAKED FLAMES, SUCH AS LIGHTED CANDLES, ON THE UNIT.  
• DISPOSE OF BATTERIES IN AN ENVIRONMENTALLY FRIENDLY MANNER.



"Made for iPod" and "Made for iPhone" mean that an electronic accessory has been designed to connect specifically to iPod, or iPhone, respectively, and has been certified by the developer to meet Apple performance standards.

Apple is not responsible for the operation of this device or its compliance with safety and regulatory standards.

Please note that the use of this accessory with iPod, or iPhone may affect wireless performance.

iPhone, iPod, iPod classic, iPod nano, and iPod touch are trademarks of Apple Inc., registered in the U.S. and other countries.

MPEG Layer-3 audio coding technology licensed from Fraunhofer IIS and Thomson.

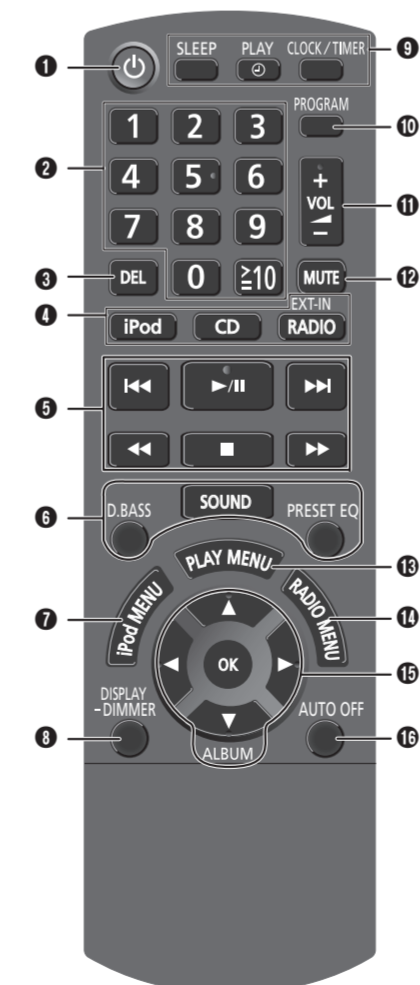
- If you see this symbol -

Information on Disposal in other Countries outside the European Union



This symbol is only valid in the European Union. If you wish to discard this product, please contact your local authorities or dealer and ask for the correct method of disposal.

## 3 OVERVIEW OF CONTROLS



Refer to the numbers in parentheses for chapter references.

- Standby/on switch [ON], [OFF] (7, 11)  
Press to switch the unit from on to standby mode or vice versa. In standby mode, the unit is still consuming a small amount of power.
- Numeric buttons [1 to 9, 0, ≥10] (10)  
To select a 2-digit number  
Example: 16. [≥10] → [1] → [6]
- Delete a programmed track (4)
- Select source [iPod]: Select iPod (5)  
[CD]: Select disc (4)  
[RADIO, EXT-IN]: Select radio, USB or AUX (6, 9)
- Basic operation [▶/||]: Playback or pause operation  
[■]: Stop playback  
[◀◀], [▶▶]: Skip track  
Select preset radio station  
[◀◀], [▶▶]: Search track  
Tune in to the radio station  
[◀◀◀], [▶▶▶]: Skip and search track  
Select preset radio station
- Select the sound effects (8)
- Select the iPod menu item (5)
- View the information shown on the display panel  
Decrease the brightness of the display panel  
Press and hold the button to use this function.  
To cancel, press and hold the button again.
- Set the sleep timer (7)  
Set the clock and timer (7)
- Set the program function (4, 6)

- Adjust the volume of the system
- Mute the sound of the system  
Press the button again to cancel. "MUTE" is also cancelled when you adjust the volume or when you switch off the system.
- Set the play menu item (4)
- Set the radio menu item (6)
- [▲, ▼]: Skip album  
Adjust clock setting  
[◀, ▶]: Select the item in the menu  
[OK]: Confirm the setting
- Automatically switch off the system  
This function switches off the system (except in radio source) if you do not use the system for approximately 30 minutes. To cancel, press the button two times.
- Headphones jack (7)  
Plug type: Ø 3.5 mm stereo (not included)  
• Avoid listening for prolonged periods of time to prevent hearing damage.  
• Excessive sound pressure from earphones and headphones can cause hearing loss.  
• Listening at full volume for long periods may damage the user's ears. Be sure to use the supplied or recommended headphones or earphones.
- AUX jack
- USB port (←→)
- Open or close the sliding door
- Display panel
- Sliding door
- Remote control sensor
- Open or close the iPod or iPhone dock

