

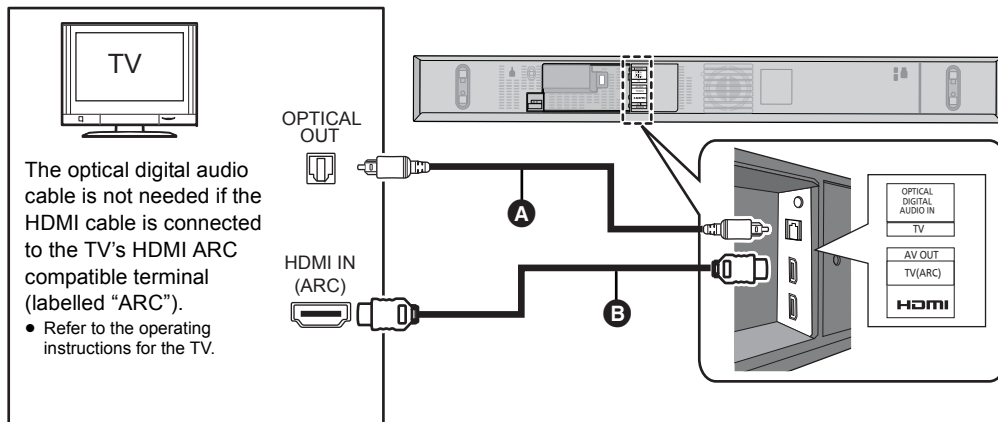
Panasonic

Quick Start Guide Home Theater Audio System

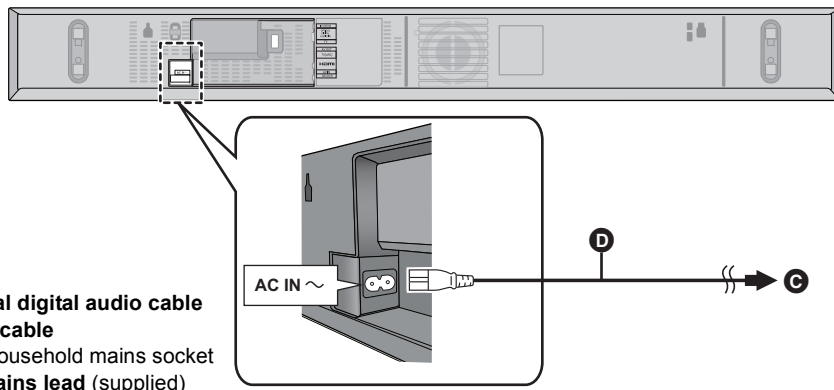
Model No. SC-HTB170

Connections

1



2



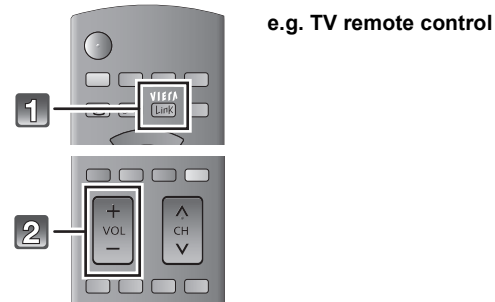
- A** Optical digital audio cable
- B** HDMI cable
- C** To a household mains socket
- D** AC mains lead (supplied)

HDMI cable is required for VIERA Link "HDAVI Control".

RQCA2100
F0113SB0

Using this system

When the TV is VIERA Link "HDAVI Control™" or HDMI CEC compatible

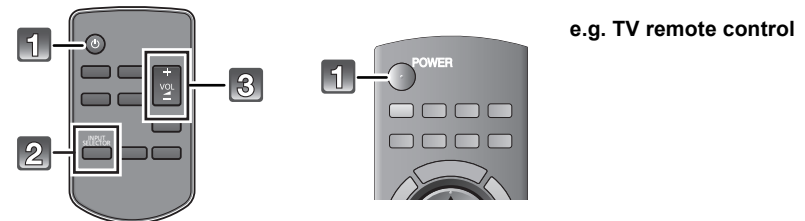


- 1 On the TV, select this home theater system as the TV's speakers from the VIERA Link menu.

- If the TV is not a Panasonic TV, set the "Receiver" or "External speakers" to "On".

- 2 Press [+ VOL -] on the TV's remote control to adjust the volume.
 - Operation with other manufacturers' equipment that supports HDMI CEC cannot be guaranteed.

When the TV is not VIERA Link "HDAVI Control™" or HDMI CEC compatible



- 1 Turn on the main unit and the TV.
- 2 Press [INPUT SELECTOR] to select the TV sound.
- 3 Press [+ VOL -] to adjust the volume.

- If there is sound from the TV's speakers too, then use the TV's remote control to lower the volume to minimum.

For installation instructions and other details, be sure to refer to the Operating Instructions.