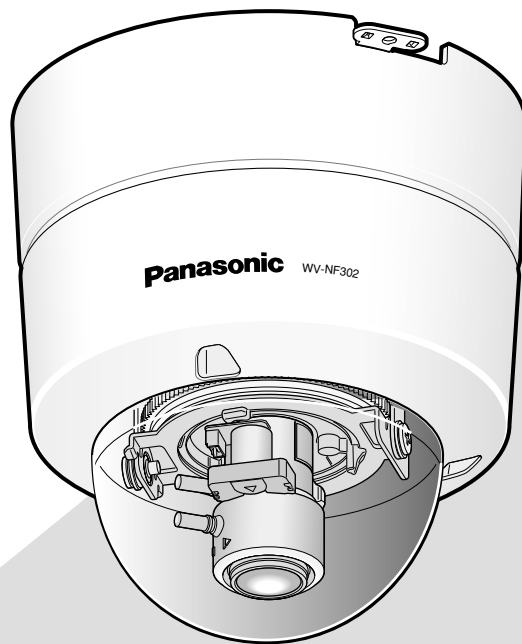


Panasonic

Network Camera

Operating Instructions

Model No. **WV-NF302**



Before attempting to connect or operate this product,
please read these instructions carefully and save this manual for future use.

CONTENTS

Preface	3
About these operating instructions	3
Trademarks and registered trademarks	3
Viewer software	3
Monitor images on a PC	4
Monitor images from a single camera	4
Monitor images from multiple cameras	8
Record images on the SD memory card manually	9
Action at an alarm occurrence	10
Transmit images onto an FTP server	11
Transmit an alarm image at an alarm occurrence (Alarm image transmission)	11
Transmit images at a designated interval or period (FTP periodic transmission)	11
Save images on the SD memory card when images fail to transmit using the FTP periodic transmission function	12
Display the log list	13
Playback of images saved on the SD memory card	16
About the network security of the camera	18
Equipped security functions	18
Viewing Help	19
Displaying the Help screen	19

Preface

About these operating instructions

There are 3 sets of operating instructions as follows.

- Installation Guide
- Operating instructions
- Setup Instructions

These operating instructions contain descriptions of how to operate this product* using a PC via a network and of how to configure the settings.

Refer to the installation guide for descriptions of how to install this product and of how to connect to a network.

Adobe® Reader® is required to read PDF. When the Adobe Reader is not installed on the PC, download the latest Adobe Reader from the Adobe web site and install it.

Trademarks and registered trademarks

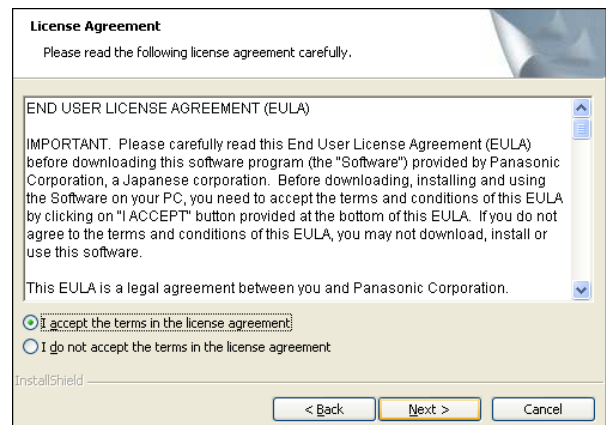
- Microsoft, Windows, Windows Vista, Internet Explorer, ActiveX and DirectX are either registered trademarks or trademarks of Microsoft Corporation in the United States and/or other countries.
- Adobe and Reader are either registered trademarks or trademarks of Adobe Systems Incorporated in the United States and/or other countries.
- SD logo is a trademark.
- Other names of companies and product contained in these operating instructions may be trademarks or registered trademarks of their respective owners.

Viewer software

- Images will not be displayed when the viewer software "Network camera View3" is not installed on the PC. This software can be installed directly from the camera or by double clicking "nwc3setup.exe" on the CD-ROM provided, and then following the on-screen instructions.

Important:

- The default setting of "Automatic installation of Viewer software" is "On". Follow the instructions on Setup Instructions when the message is displayed on the information bar of the browser.
- When the "Live" page is displayed for the first time, the install wizard of the ActiveX control required to display images from the camera will be displayed. Follow the instructions of the wizard.
- When the install wizard is displayed again even after completing the installation of the ActiveX, restart the PC.



- The viewer software used on each PC should be licensed individually. The number of installations of the viewer software from the camera can be checked on the [Upgrade] tab of the "Maintenance" page (⚙ Setup Instructions). Refer to your dealer for the software licensing.

Monitor images on a PC

The following are descriptions of how to monitor images from the camera on a PC.

Monitor images from a single camera

Step 1

Start up the web browser.

Step 2

Enter the IP address designated using the Panasonic IP setup software in the address box of the browser.

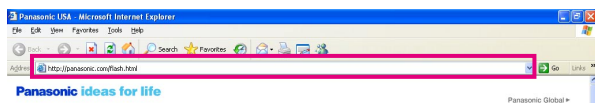
Example when entering an IPv4 address:

http://192.168.0.10

Example when entering an IPv6 address:

http://URL registered using IPv6 address

http://[IPv6 address]



Important:

- When the HTTP port number is changed from "80", enter "http://IP address of the camera + : (colon) + port number" in the address box of the browser, for example, "http://192.168.0.11:8080".
- When the PC is in a local network, configure the proxy server setting of the web browser (under "Internet Options..." under "Tools" of the menu bar) to bypass the proxy server for the local address.

Step 3

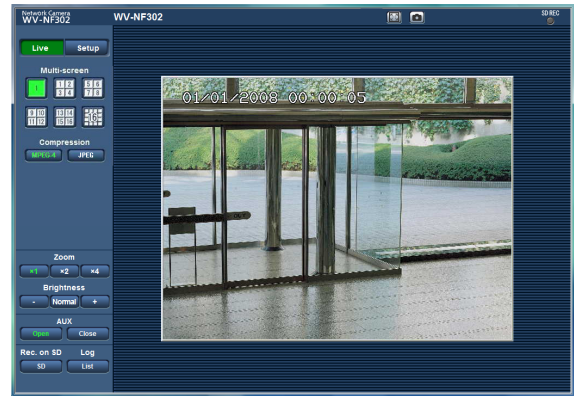
Press the [Enter] key on the keyboard.

→ The "Live" page will be displayed.

When "On" is selected for "User authentication", the authentication window will be displayed before displaying live images for the user name and password entries. The default user name and password are as follows.

User name: admin

Password: 12345



Important:

- To enhance the security, change the password for the user "admin". It is recommended to change this password periodically.
- When displaying multiple MPEG-4 images on a PC, images may not be displayed depending on the performance of the PC.

Notes:

- Up to 16 users can access the camera concurrently regardless of the image type (JPEG/MPEG-4) that the current access users are monitoring. Depending on the set values for "Bandwidth control(bit rate)" and "Max bit rate (per client)", the maximum concurrent access number may be less than 16 users. When 16 users are concurrently accessing, the access limit message will be displayed for users who subsequently attempt to access. When "Multicast" is selected for "Transmission type" of "MPEG-4", users who are monitoring MPEG-4 images will not be limited to access.
- When "On" is selected for "MPEG-4 transmission" (Setup Instructions), an MPEG-4 image will be displayed. When "Off" is selected, a JPEG image will be displayed. It is possible to display a JPEG image even when "On" is selected for "MPEG-4 transmission". In this case, the refresh interval will be limited.
- The refresh interval of JPEG images will be limited to 15 fps at the maximum when transmitting JPEG and MPEG-4 images simultaneously even when a frame-rate-prioritized bit rate is selected at "Max bit rate (per client)" of "MPEG-4".

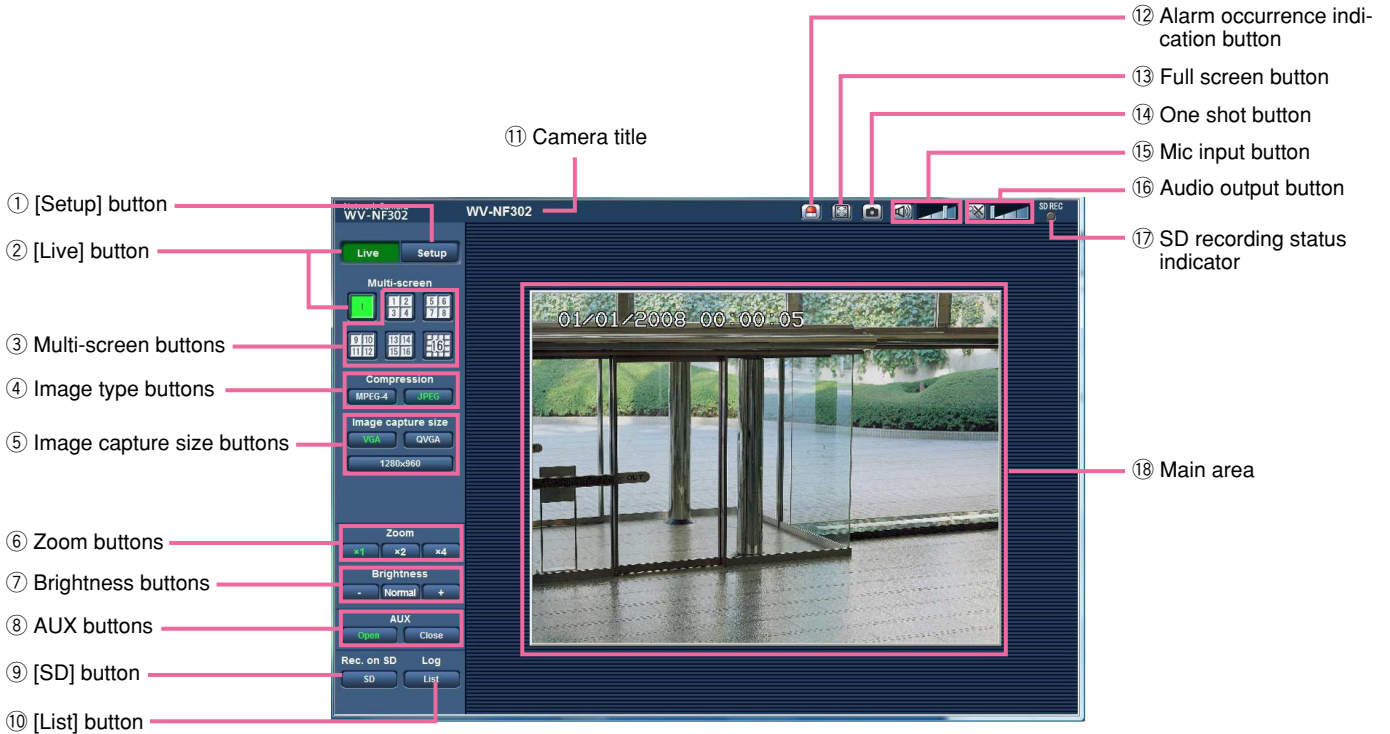
<Refresh interval (MPEG-4)>

- When "On" is selected for "MPEG-4 transmission"
 - JPEG (VGA or QVGA): 15 fps
 - JPEG (1 280 x 960): 5 fps
- When "Off" is selected for "MPEG-4 transmission"
 - JPEG (VGA or QVGA): 30 fps
 - JPEG (1 280 x 960): 11 fps

The refresh interval may be longer depending on a network environment, PC spec, photographic subject, access traffic, etc.

Refer to the following page for further information about the "Live" page.

About the "Live" page



① **Setup [Setup] button *1**

Click this button to display the setup menu. The button will turn green and the setup menu will be displayed.

② **Live [Live] button**

Click this button to display the "Live" page. The button will turn green and the "Live" page will be displayed.

③ **Multi-screen buttons**

Images from multiple cameras can be displayed on a multi-screen by registering cameras on the setup menu. (☞ page 8)


④ **Image type buttons**


MPEG-4: The letters "MPEG-4" on the button will turn green and an MPEG-4 image will be displayed. When "Off" is selected for "MPEG-4 transmission" on the setup menu, the [MPEG-4] button will not be displayed. (☞ Setup Instructions)


JPEG: The letters "JPEG" on the button will turn green and JPEG image will be displayed.

⑤ **Image capture size buttons**

These buttons will be displayed only when a JPEG image is displayed.


 : The letters "VGA" will turn green and images in the main area will be displayed in VGA size.


 : The letters "QVGA" will turn green and images in the main area will be displayed in QVGA size.


 :
The letters "1 280 x 960" will turn green and images in the main area will be displayed in 1 280 x 960 (pixels).

Depending on the window size of the web browser, it may become smaller than 1 280 x 960 pixels.


⑥ **Zoom buttons**


 : The letter "x1" will turn green and images in the main area will be displayed at x1.


 : The letter "x2" will turn green and images in the main area will be displayed at x2.

 : The letter "x4" will turn green and images in the main area will be displayed at x4.


⑦ **Brightness buttons *2**

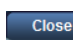
 : The displayed image will be darker.


 : The adjusted brightness will return to the default brightness.

 : Image will be brighter.

⑧ **AUX buttons *2**

 : The letters "Open" on the button will turn green and the status of AUX connector will be open.

 : The letters "Close" on the button will turn green and the status of the AUX connector will be closed.

⑨  **[SD] button (manual SD recording button) *2**

This button will be displayed only when "Manual" is selected for "Save trigger" on the setup menu. (☞ Setup Instructions)

Click this button to manually record images on the SD memory card. Refer to page 9 for descriptions of how to manually record images on the SD memory card.

⑩  **[List] button *1**

This button will become available only when "On" is selected for "Save logs" on the setup menu (☞ Setup Instructions).

When this button is clicked, the log list will be displayed and images saved on the SD memory card can be played.

Refer to page 16 for further information about the log list and of how to play images on the SD memory card.

⑪ **Camera title**

The camera title entered for "Camera title" on the [Basic] tab will be displayed. (☞ Setup Instructions)

⑫  **Alarm occurrence indication button *2**

This button will be displayed and will blink when an alarm has occurred. When this button is clicked, the alarm output terminal will be reset and this button will disappear. (☞ Setup Instructions)

⑬  **Full screen button**


Images will be displayed on a full screen. To return to the "Live" page, press the [Esc] key.


⑭  **One shot button**

Click this button to take a picture (a still picture). The picture will be displayed on a newly opened window. When right-clicking on the displayed image, the pop-up menu will be displayed. The displayed image can be saved on the PC by selecting "Save" from the pop-up menu.

When "Print" is selected, printer output is enabled.

⑮  **Mic input button *3**


Turns on/off the audio reception (hear audio from the camera on a PC). This button will be displayed only when "Mic input", "Interactive (full duplex)" or "Interactive (half duplex)" is selected for "Audio mode" on the setup menu. (☞ Setup Instructions) When this button is clicked, the button will turn into the  button and audio from the camera will not be heard.


Audio volume can be adjusted (Low/Middle/High) by moving the volume cursor .

⑩  **Audio output button** *3


Turns on/off the audio transmission (play audio from the PC on the camera speaker). This button will be displayed only when "Audio output", "Interactive (full duplex)" or "Interactive (half duplex)" is selected for "Audio mode" on the setup menu. (☞ Setup Instructions)

The button blinks while the audio transmission is being carried out except the case of setting to "Interactive (full duplex)".

When this button is clicked, the button will turn into the  button and audio from the PC will not be heard.

Audio volume can be adjusted (Low/Middle/High) by moving the volume cursor .

Notes:

- When a user is using the audio transmission function with "Interactive (half duplex)" selected, the receiver button and the transmission button will be inoperable for the other users. When "Interactive (full duplex)" is selected, the transmission button is inoperable for other users.
- Possible duration of audio transmission is up to 5 minutes per transmission. When 5 minutes have passed, the audio transmission function will be canceled and the audio reception function will automatically be turned on. To turn the audio transmission function on, click the  button again.
- When the camera is restarted, the adjusted volume level (for both the audio transmission and reception) will return to the level that had been set on the [Audio] tab on the setup menu. (☞ Setup Instructions)
- Actual volume level will change in three steps even though the volume cursor can be adjusted minutely.

⑪  **SD recording status indicator**

The status of the SD recording can be checked with this indicator.

When the SD recording starts, this indicator will light red. When the SD recording stops, this indicator will go off.

This indicator will be displayed only when "Manual" is selected for "Save trigger" on the setup menu.

(☞ Setup Instructions)

⑫ **Main area**

Images from the camera will be displayed in this area.

The current time and date will be displayed at the selected position in the time and date format set on the setup menu. (☞ Setup Instructions).

Click a desired point in the main area on the "Live" page that is to be the center of the angle of view.

The camera moves to adjust the position in order to set the clicked point as the center when images are being displayed at 2x or 4x.

- *1 Only operable by users whose access level is "1. Administrator"
- *2 Only operable by users whose access level is "1. Administrator" or "2. Camera control" when "On" is selected for "User authentication" (☞ Setup Instructions).
- *3 Operable by users who belong to the access level selected for "Permission level of audio trans./recep." on the [Audio] tab of the "Image/Audio" page (☞ Setup Instructions).

Refer to Setup Instructions for further information about the access level.

Note:

When operated by a lower access level user, images displayed on the screen may be changed temporarily. This does not affect operation of the camera.

Monitor images from multiple cameras

Images from multiple cameras can be displayed on a multi-screen. Images from 4 cameras (up to 16 cameras) can be displayed simultaneously. To display images on a multi-screen, it is necessary to register cameras in advance. 4 cameras can be registered as a group and up to 4 groups (16 cameras) can be registered. (☞ Setup Instructions)

Important:

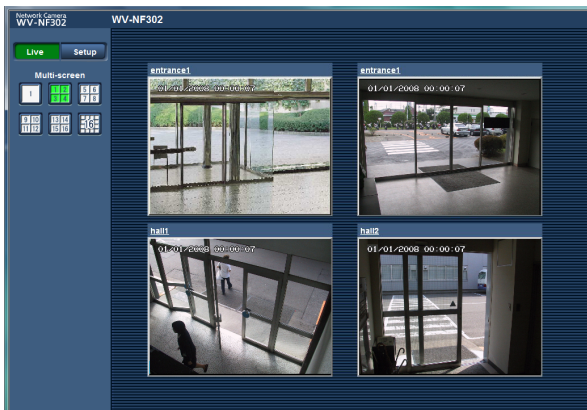
- When simultaneously displaying images from 16 cameras on a multi-screen, zooming images from the WV-NF302 and panning/tilting/zooming of images from the combination network cameras such as WV-NS950, WV-NS202A, etc. will become unavailable.
 - When displaying images from 4 cameras on a multi-screen, panning/tilting/zooming are available only for images from the network cameras such as WV-NS950, WV-NS202A, etc.
 - Only JPEG images can be displayed on a multi-screen. Audio will not be heard.
 - When the power is turned off or the LAN cable is disconnected while displaying images, displaying images on a multi-screen from the "Live" page will become unavailable.
-

Step 1

Click the desired [Multi-screen] button.

→ Images from the registered cameras will be displayed on a selected multi-screen (screen can be split up to 16 areas). The following are instructions when displaying on a 4-split screen.

- ① To display images on a single screen, click the [Live] button.
- ② Click a camera title. Live images from the camera corresponding to the clicked camera title will be displayed on the "Live" page of the newly opened window.



Record images on the SD memory card manually

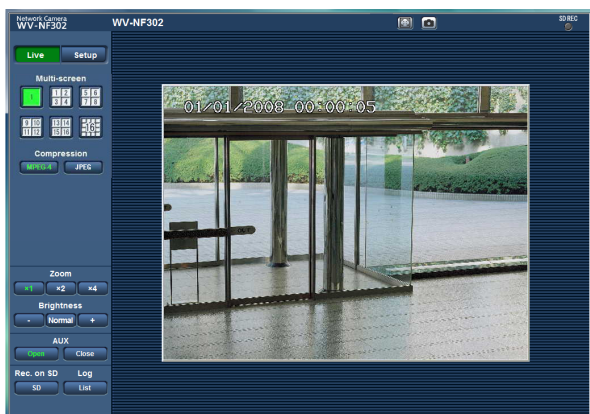
Images displayed on the "Live" page can be recorded on the SD memory card manually.

This button is operable only when "Manual" is selected for "Save trigger" on the setup menu. (☞ Setup Instructions)

Images recorded on the SD memory card can be copied onto the PC. (☞ Setup Instructions)

Step 1

Display the "Live" page. (☞ page 4)



Step 4

Click the [Stop] button to stop saving images on the SD memory card.

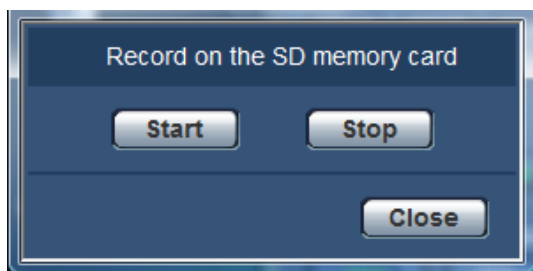
Step 5

Click the [Close] button to close the window.

Step 2

Click the [SD] button in the "SD memory card" box.

→ The SD recording window will open.



Step 3

Click the [Start] button to start recording images on the SD memory card.

→ The SD recording status indicator will light red while images are being recorded on the SD memory card.

→ The save interval (frame rate) can be configured on the [SD memory card] tab of the "Basic" page. (☞ Setup Instructions)

Action at an alarm occurrence

The alarm action will be performed when the following alarms occur.

Alarm type

Terminal alarm: When connecting an alarm device such as a sensor to the EXT I/O connector on the of the camera, the alarm action (camera action at an alarm occurrence) will be performed when the connected alarm device is activated.

VMD alarm: When motion is detected in the set VMD area, the alarm action will be performed.

* VMD stands for "Video Motion Detection".

Command alarm: When a Panasonic alarm protocol (☞ Setup Instructions) is received from the connected device via a network, the alarm action will be performed.

Action at an alarm occurrence

Display the [Alarm occurrence indication] button on the "Live" page. (☞ page 6)

The alarm occurrence indication button will be displayed on the "Live" page at an alarm occurrence.

Important:

When "Polling (30 sec)" is selected for "Alarm status update mode" (☞ Setup Instructions), the alarm occurrence indication button will be refreshed in 30-second intervals. For this reason, it may take a maximum of 30 seconds until the alarm occurrence indication button is displayed on the "Live" page at an alarm occurrence.

Notify of alarm occurrences to the device connected to the alarm connector

It is possible to output signals from the alarm connector on the rear of the camera and sound the buzzer when an alarm occurs. The settings for the alarm output can be configured in the "Alarm output terminal setup" section of the [Alarm] tab of the "Alarm" page. (☞ Setup Instructions)

Transmit an image onto a server automatically

An alarm image can be transmitted at an alarm occurrence to the server designated in advance. The settings required to transmit an alarm image to a server can be configured in the "Alarm image" section of the [Alarm] tab of the "Alarm" page (☞ Setup Instructions) and the [FTP] tab of the "Server" page (☞ Setup Instructions).

Important:

Select "FTP error" for "Save trigger" on the [SD memory card] tab when using the SD memory card. When "Alarm input" or "Manual" is selected for "Save trigger", an alarm image will not be transmitted at an alarm occurrence to the FTP server.

Notify of alarm occurrences by e-mail

Alarm mail (alarm occurrence notification) can be sent at an alarm occurrence to the e-mail addresses registered in advance. Up to 4 addresses can be registered as recipients of the alarm mail. An alarm image (still picture) can be sent with the alarm mail as an attached file. The settings for alarm mail can be configured in the "Mail notification" section of the [Notification] tab of the "Alarm" page (☞ Setup Instructions) and the [Mail] tab of the "Server" page (☞ Setup Instructions).

Notify of alarm occurrences to the designated IP addresses (Panasonic alarm protocol)

This function is available only when a Panasonic device, such as the network disk recorder, is connected to the system. When "On" is selected for "Panasonic alarm protocol", the connected Panasonic device will be notified that the camera is in the alarm state. The settings for Panasonic alarm protocol can be configured in the "Panasonic alarm protocol notification" section of the [Notification] tab of the "Alarm" page. (☞ Setup Instructions)

Transmit images onto an FTP server

Images can be transmitted to an FTP server. By configuring the following settings, transmission of images captured at an alarm occurrence or captured at a designated interval to an FTP server will become available.

Important:

- When using this function, set the user name and the password to access the FTP server to restrict users who can log into the FTP server.
 - To transmit images to the FTP server, select "Not use" for "SD memory card", or select "FTP error" for "Save trigger" on the [SD memory card] tab of the "Basic" page.
-

Transmit an alarm image at an alarm occurrence (Alarm image transmission)

An alarm image can be transmitted at an alarm occurrence to the FTP server. To transmit alarm images to an FTP server, it is necessary to configure the settings in advance.

The settings for the FTP server can be configured on the [FTP] tab of the "Server" page. (☞ Setup Instructions)

The alarm image transmission function can be turned on/off in the "Alarm image" section of the [Alarm] tab of the "Alarm" page. (☞ Setup Instructions)

Note:

Depending on the network traffic, the number of the transmitted images may not reach the set number of images to be transmitted.

Transmit images at a designated interval or period (FTP periodic transmission)

Images can be transmitted at a designated interval or period. To transmit images at a designated interval or period, it is necessary to configure the settings in advance.

The settings for the FTP server to which images are to be transmitted can be configured on the [FTP] tab of the "Server" page. (☞ Setup Instructions)

On the [FTP img. trans.] tab of the "Network" page (☞ Setup Instructions), the FTP periodic transmission function can be turned on/off, and the settings relating to images to be transmitted and the settings relating to schedules (periods) can be configured.

Notes:

- Depending on the network line speed or the network traffic, images may not be transmitted at the exact designated interval or period.
 - When "On" is selected for both the alarm image transmission function and the FTP periodic transmission function, the alarm image transmission function will be given priority over the FTP periodic transmission function. For this reason, images may not be transmitted at the exact designated interval or period if alarms occur frequently.
-

Save images on the SD memory card when images fail to transmit using the FTP periodic transmission function

Images that have failed to transmit using the FTP periodic transmission can be saved automatically on the SD memory card. Images saved on the SD memory card can be obtained from the [SD memory card] tab of the "Basic" page. (☞ Setup Instructions)

To use the SD memory recording function featured in Panasonic's network disk recorder, select "Off" for "FTP periodic transmission" (☞ Setup Instructions) and "FTP error" for "Save trigger" (☞ Setup Instructions).

We make no guarantee for any damages of files on the SD memory card incurred by malfunction or error occurrence in files saved in the SD memory card regardless of what the cause may be.

Save images on the SD memory card

By configuring the following settings, saving images that have failed to transmit to the FTP server using the FTP periodic transmission function will become available.

SD memory card: Use (☞ Setup Instructions)

Save trigger: FTP error (☞ Setup Instructions)

Display the log list

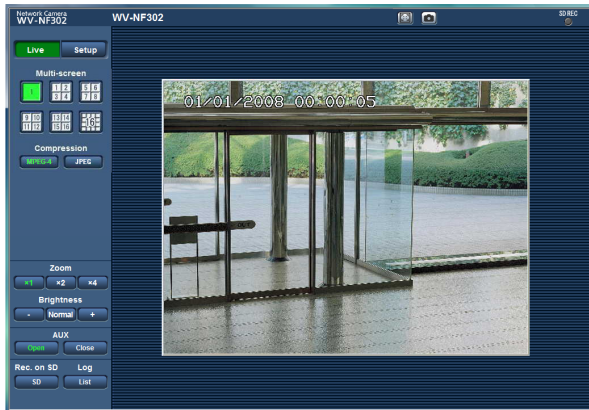
The following logs can be displayed in list form.

- Alarm log: Logs of the alarm occurrences such as time and date of the alarm occurrences and the alarm type will be displayed.
- Manual log: Logs filed when images have been recorded on the SD memory card will be displayed.
- FTP trans. error log: Logs filed when the FTP periodic transmission function has failed will be displayed.

Each log list can be displayed only when "On" is selected for "Save logs" on the [Log] tab of the "Basic" page (☞ Setup Instructions) respectively.

Step 1

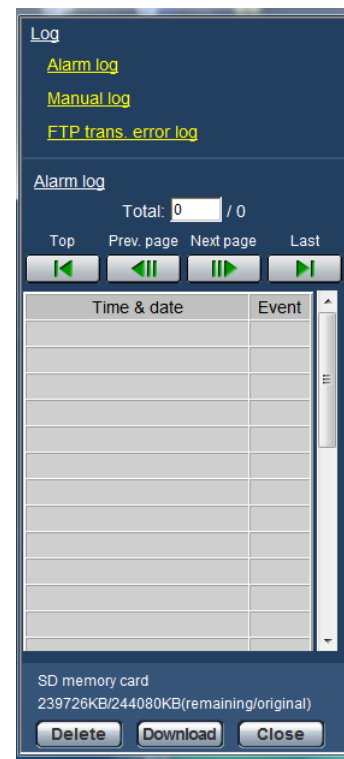
Display the "Live" page. (☞ page 4)



Step 2

Click the [List] button.

→ The log list will be displayed in a newly opened window (log list window).



Important:

Only a single user can operate the log list window.
Other users cannot access the log list window.

Step 3

Click the desired log type listed below "Log" to display the log list.

→ The log list of the selected log type will be displayed.

Note:

When saved images are on the SD memory card, clicking the time and date of the alarm occurrence will display the respective images. (☞ page 16)

Log list displayed in the log list window

[Number of the listed logs]

Total number of the logs of the selected log type and a number of the log being displayed on the top of the log list will be displayed.

Note:

Enter the desired log number and press the [Enter] key on the keyboard. The log of the designated number will be displayed on the top of the log list.

[Top] button

Click this button to display the log listed on the top of the currently displayed log list.

[Prev. page] button

Click this button to display the previous page of the log list.

Note:

When the mouse button is held down while placing the mouse pointer on the [Prev Page] button, the displayed log number will be decremented. When the mouse button is released, the decrement of the log number will stop and the log number displayed at the moment when the mouse button is released will be the top of the currently displayed page.

[Next page] button

Click this button to display the next page of the log list.

Note:

When the mouse button is held down while placing the mouse pointer on the [Next Page] button, the displayed log number will be incremented. When the mouse button is released, the increment of the log number will stop and the log number displayed at the moment when the mouse button is released will be the top of the currently displayed page.

[Last] button

Click this button to display the last log of the currently displayed log list.

[Time & date]

Time and date when each log has been filed will be displayed.

Notes:

- When "Off" is selected for "Time display format" (☞ Setup Instructions), time and date of alarm occurrence will be displayed in 24-hour format.
- **Alarm log:** Alarm occurrence time and date will be filed as a log.

Manual log: Time and date when recording of images onto the SD memory card started will be filed as a log. When recording are performed sequentially, logs will be filed every one hour.

FTP trans. error log: Logs will be filed every one hour.

[Event]

The event type will be displayed.

The event types will be displayed only when displaying the alarm log list.

TRM: Alarm by terminal alarm

VMD: Alarm by VMD alarm

COM: Alarm by command alarm

[SD memory card]

Total capacity and remaining space of the SD memory card will be displayed.

There is no difference between this item and "SD card memory" on the [SD memory card] tab. (The same contents will be displayed.) (☞ Setup Instructions)

[Delete] button

Click this button to delete the currently displayed log list.

When using the SD memory card, images associated with the log list will also be deleted.

Important:

- When many images are saved on the SD memory card, it will take some time to complete the deletion.
- In the process of the deletion, only logs will be saved, and it is impossible to save images newly.
- Do not turn off the power of the camera until the deletion is complete.

When the power of the camera is turned off in the process of the deletion, some images may remain on the SD memory card.

In this case, click the [Delete] button on the same log list window used to delete the logs.

[Download] button

Click this button to download all logs of the selected log list as a file onto the PC.

[Close] button

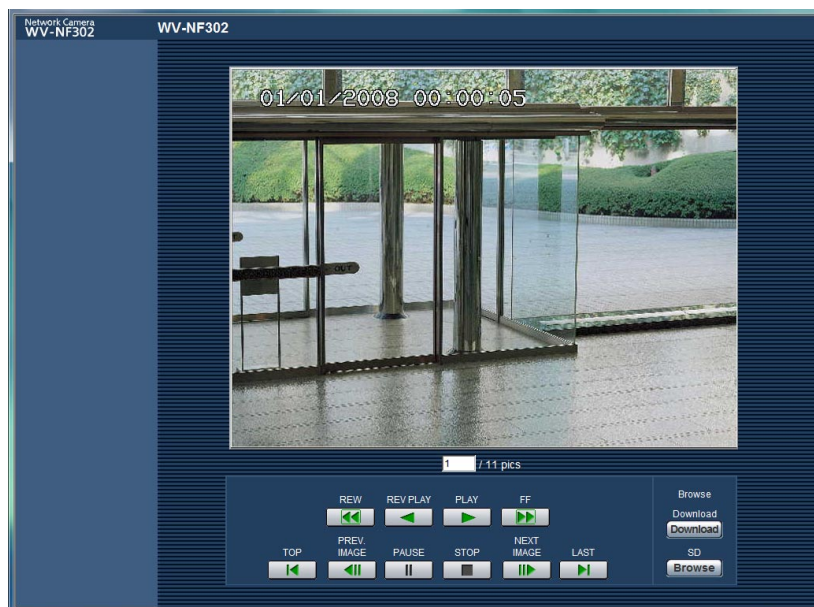
Click this button to close the log list window.

Playback of images saved on the SD memory card

When clicking a time and date listed on the log list window, the "Live" page will turn to the "Playback" page. When images associated with the clicked time and date are on the SD memory card, the first image of them will be displayed.

Important:

- Refresh interval of images may become slow during playback or download.
 - When many images are saved on the SD memory card, it may take time to display images on the "Playback" page.
 - Even when the size of the images saved on the SD memory card is "QVGA" or "1 280 x 960", the images will be played in VGA size on the "Playback" page. Therefore, images may look coarse on the "Playback" window.
 - When playing images by selecting an FTP error log on the log list, images may not be played in order of images recorded on the SD memory card if they have been recorded on the SD memory card with selected value for the "Transmission interval" setting on the [FTP img. trans.] tab (☞ Setup Instructions) is "1 min" or less.
-



About the "Playback" page

[Number of the listed images]

When clicking a time and date listed on the log list window, total number of images associated with the clicked time and date, and the number of the currently displayed image will be displayed.

Note:

Enter the desired number of image and press the [Enter] key on the keyboard. The image of the designated number will be displayed.

[PLAY] button

When this button is clicked, images will be played in sequential order.

[REV PLAY] button

Images will be played in reverse sequential order.

[PAUSE] button

Playback will be paused when this button is clicked during playback. Playback will resume when this button is clicked during pausing.

[STOP] button

Playback will stop and the "Playback" window will turn to the "Live" page.

[NEXT IMAGE] button

The next frame will be displayed and paused when this button is clicked during playback.

Each time this button is clicked during pausing, the frame next to the currently displayed frame will be displayed.

Note:

When the mouse button is being held while placing the mouse pointer on this button, the displayed image number will be incremented.

When the mouse button is released, the increment of the image number will stop and the image number displayed at the moment when the mouse button is released will be displayed.

[PREV IMAGE] button

The previous frame will be displayed and paused when this button is clicked during playback.

Each time this button is clicked during pausing, the frame previous to the currently displayed frame will be displayed.

Note:

When the mouse button is held down while the mouse pointer is on this button, the image number will be decremented.

When the mouse button is released, the decrement of the image number will stop and the image number displayed at the moment when the mouse button is released will be displayed.

[FF]/[REW] buttons

Fast playback/fast reverse playback will be performed. Each time the button is clicked, the playback speed will change.

When the [PLAY]/[REV PLAY] button is clicked during fast playback/fast reverse playback, the playback speed will be x1.

[TOP] button

The first image will be displayed.

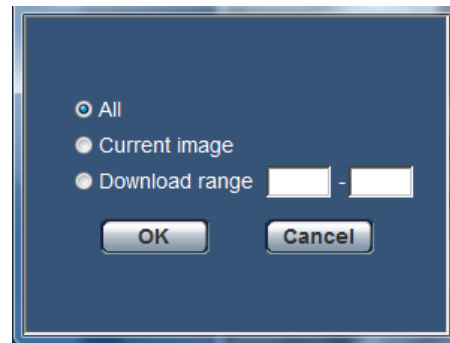
[LAST] button

The last image will be displayed.

[Download] button

The selected image will be downloaded onto the PC. Before downloading images, designate the destination directory in advance. (☞ Setup Instructions)

The following window will be displayed when the [Download] button is clicked.



All: All images saved at the selected time and date will be downloaded.

Current image: Only the currently displayed image will be downloaded.

Download range: Images in the designated range of number of images will be downloaded.

Notes:

- When the [Cancel] button is clicked in the process of the download, the download will be canceled. In this case, images already downloaded before clicking the [Cancel] button will be saved on the destination directory.
 - Even when lower-case letters are used for "File name" (☞ Setup Instructions) that is used for the name of the image to be saved on the SD memory card manually or by an alarm input, the file name of downloaded images will be capitalized in uppercase when they are downloaded onto the PC.
-

[Browse] button

When successfully logged in after the user authentication process, a folder on the SD memory card in which images are saved will be displayed. (☞ Setup Instructions)

About the network security of the camera

Equipped security functions

The following security functions are featured in this camera.

① **Access restrictions by the host authentication and the user authentication**

It is possible to restrict users from accessing the camera by setting the host authentication and/or the user authentication to "On". (☞ Setup Instructions)

② **Access restrictions by changing the HTTP port**

It is possible to prevent illegal access such as port scanning, etc. by changing the HTTP port number. (☞ Setup Instructions)

Important:

Design and enhance security countermeasures to prevent leakage of information such as image data, authentication information (user name and password), alarm mail information, FTP server information, DDNS server information, etc.

Note:

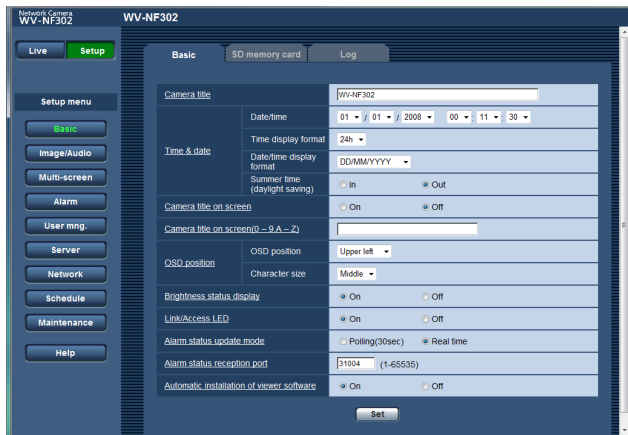
When user authentication (authentication error) has failed to pass 8 times within 30 seconds using the same IP address (PC), access to the camera will be denied for a while.

Viewing Help

If you want to know anything about operation or setup methods on screen, display the "Help" screen.

Displaying the Help screen

Setup screen



Step 1

Click the [Setup] button.

→ The setup screen is displayed.

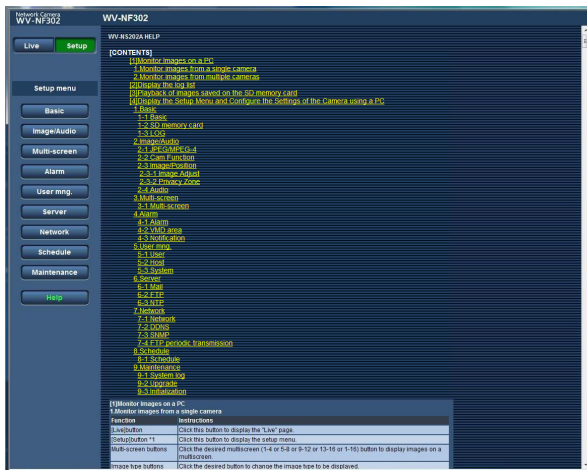
Clicking an underlined item will display the "Help" pop-window. If it is possible to configure the settings while displaying the "Help" pop-up window.

Step 2

Click the [Help] button.

→ The "Help" screen is displayed.

Help screen



Step 3

Click the desired item to display a detailed explanation for the corresponding operation.

Panasonic Corporation
<http://panasonic.net>

Importer's name and address to follow EU rules:

Panasonic Testing Centre
Panasonic Marketing Europe GmbH
Winsbergring 15, 22525 Hamburg F.R.Germany