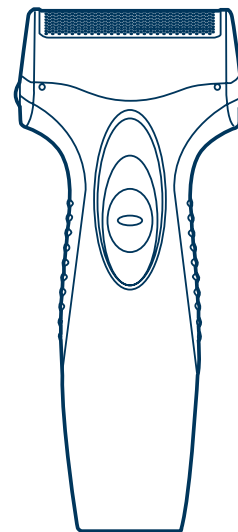


Panasonic[®]

Operating Instructions
Rechargeable Shaver
Model No. ES-SA40



Before operating this unit, please read these instructions completely.

Important

► Before use

This WET/DRY shaver can be used for wet shaving with shaving lather or for dry shaving. You can use this watertight shaver in the shower and clean it in water. The following is the symbol of Wet shaver. The symbol means that the hand-held part may be used in a bath or shower.



Treat yourself to wet lather shaves for at least three weeks and notice the difference. Your Panasonic WET/DRY shaver requires a little time to get used to because your skin and beard need about a month to adjust to any new shaving method.

► Using the shaver

Caution - The outer foil is very thin and can be damaged if not used correctly. Check that the foil is not damaged before using the shaver. Do not use the shaver if the foil etc. is damaged as you will cut your skin.

► Charging the shaver

Do not use any charging adaptor other than one specifically designed for this model (RE7-52). Plug in the adaptor into a household outlet where there is no moisture and handle it with dry hands. The shaver may become warm during use and charging. However, this is not a malfunction. Do not charge the shaver where it will be exposed to direct sunlight or other heat sources.

Adequate ambient temperature for charging is 0-40 °C.

The supply cord cannot be replaced. If the cord is damaged, the appliance should be scrapped.

► Cleaning the shaver

Warning - Remove the shaver from the charging adaptor before

cleaning it to prevent electric shock.

If you clean the shaver with water, do not use salt water or hot water. Do not soak the shaver in water for a long period of time. Wipe it with a cloth dampened with soapy water. Do not use thinner, benzine or alcohol.

► Storing the shaver

Remove the shaver from the charging adaptor when storing it. This appliance is not intended for use by persons (including children) with reduced physical, sensory or mental capabilities, or lack of experience and knowledge, unless they have been given supervision or instruction concerning use of the appliance by a person responsible for their safety. Children should be supervised to ensure that they do not play with the appliance. Keep these operating instructions in a safe place.

SPECIFICATIONS

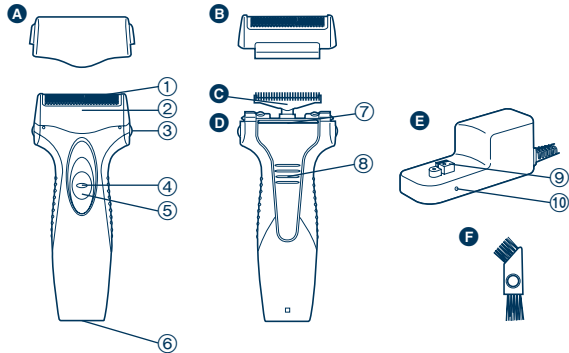
Power source: See the name plate on the product.

Motor voltage: 1.2 V DC

Charging time: 8 hours

This product is intended for household use only.

Parts identification



- A** Protective cap
- B** Outer foil section
 - ① Outer foil
 - ② Foil frame
- C** Inner blade
- D** Main body
 - ③ Foil frame release buttons
 - ④ Switch lock button
- E** Charging adaptor (RE7-52)
 - ⑤ OFF/ON switch
 - ⑥ Appliance socket
 - ⑦ Trimmer
 - ⑧ Trimmer handle
 - ⑨ Charging plug
 - ⑩ Charge indicator lamp
- F** Cleaning brush

Charge

Charging

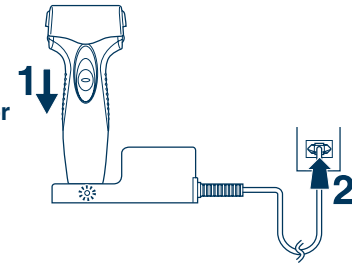
Perform the following steps to charge the shaver if it seems to lose the speed.

You can fully charge the shaver in 8 hours.

- A full charge will supply enough power for approx. 7 shaves of 3 minutes each.

1 Turn off the shaver and insert it in the charging adaptor as illustrated.

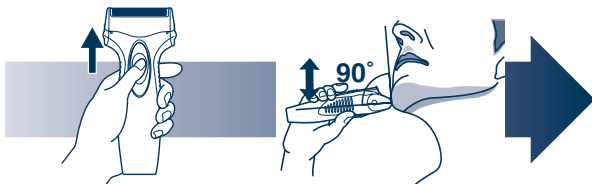
2 Plug in the adaptor into a household outlet.



- The charge indicator lamp glows and stays on until the shaver is removed from the charging adaptor.

Shave

Using the shaver

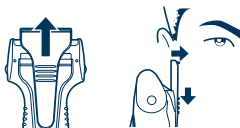


- 1** Depress the switch lock button and slide the OFF/ON switch upwards.
- 2** Hold the shaver as illustrated above and shave.

- Start out shaving by applying gentle pressure to your face. Stretch your skin with your free hand and move the shaver back and forth in the direction of your beard. You may gently increase the amount of pressure as your skin becomes accustomed to this shaver. Applying excessive pressure does not provide a closer shave.

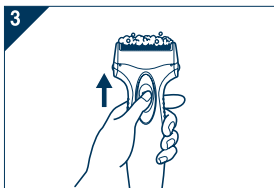
► Using the trimmer

Slide the trimmer handle up. Place at a right angle to your skin and move downwards to trim your sideburns.

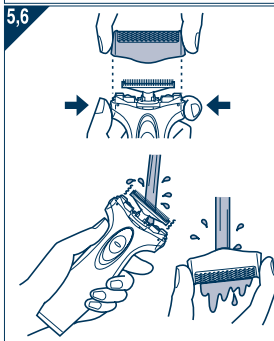


Clean

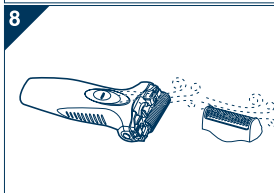
Cleaning



1. Remove the shaver from the charging adaptor.
2. Apply some hand soap and some water to the outer foil.
3. Turn the shaver on.
4. Turn the shaver off after 10-20 seconds.



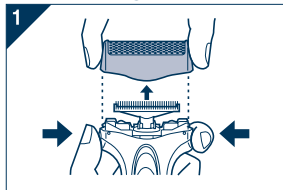
5. Remove the outer foil section and turn the shaver on.
6. Clean the shaver and the outer foil section with running water.
7. Wipe off any drops of water with a dry cloth.
8. Dry the outer foil section and the shaver completely.
9. Attach the outer foil section to the shaver.



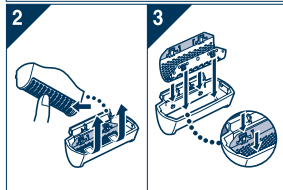
Replacing the outer foil and the inner blade

outer foil	once every year
inner blade	once every two years

▶ Replacing the outer foil

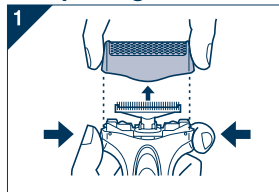


1. Press the foil frame release buttons and lift the outer foil section upwards as illustrated.



2. Gently push the outer foil in the way as illustrated. Then it will pop up from the foil frame.
3. The new outer foil should be slightly bent and pushed in until it is hooked in the foil frame.

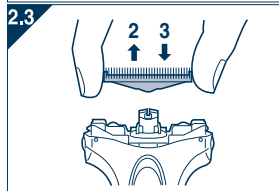
▶ Replacing the inner blade



1. Press the foil frame release buttons and lift the outer foil section upwards as illustrated.

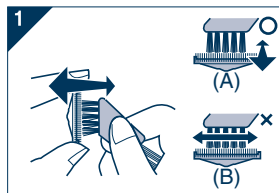
2. Remove the inner blade as illustrated.

- Do not touch the edges (metal parts) of the inner blade to prevent injury to your hand.



3. Insert the inner blade until it clicks as illustrated.

Cleaning with the brush



1. Clean the inner blade using the short brush by moving it in direction (A).

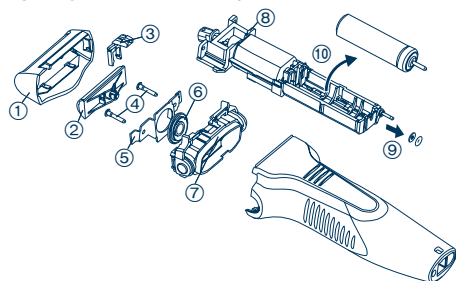
Clean the outer foil, the shaver body and the trimmer using the long brush.

- Do not move the short brush in direction (B) as it will damage the inner blade and affect its sharpness.
- Do not use the short brush to clean the outer foil.

Removing the built-in rechargeable battery

Remove the built-in rechargeable battery before disposing of the shaver. Please make sure that the battery is disposed of at an officially designated location if there is one. Do not dismantle or replace the battery so that you can use the shaver again. This could cause fire or an electric shock. Replace it at an authorized service center.

- Remove the shaver from the charging adaptor when removing the battery.
- Perform steps ① to ⑩ and lift the battery, and then remove it.



For environmental protection and recycling of materials

This shaver contains a Nickel-Metal Hydride battery. Please make sure that the battery is disposed of at an officially assigned location, if there is one in your country.

MEMO

Panasonic Electric Works Wanbao (Guangzhou) Co., Ltd.
Wanbao Base Shiguang Road, Panyu District, Guangzhou, Guangdong, 511495 CHINA