

# Panasonic®

Operating Instructions  
Rechargeable Shaver  
Model No. ES-LA83

---

---



Before operating this unit, please read these instructions completely and save them for future use.

## Important

### ► Before use

This WET/DRY shaver can be used for wet shaving with shaving lather or for dry shaving. You can use this watertight shaver in the shower and clean it in water. The following is the symbol of Wet shaver. The symbol means that the hand-held part may be used in a bath or shower.



Treat yourself to wet lather shaves for at least three weeks and notice the difference. Your Panasonic WET/DRY shaver requires a little time to get used to because your skin and beard need about a month to adjust to any new shaving method.

### ► Using the shaver

Caution - The outer foil is very thin and can be damaged if not used correctly. Check that the foil is not damaged before using the shaver. Do not use the shaver if the foil etc. is damaged as you will cut your skin.

Persons using an implanted medical electronic device, such as a pacemaker, should not allow this unit to touch the skin where the medical electronic device is implanted because this may cause a malfunction.

This appliance is not intended for use by persons (including children) with reduced physical, sensory or mental capabilities, or lack of experience and knowledge, unless they have been given supervision or instruction concerning use of the appliance by a person responsible for their safety. Children should be supervised to ensure that they do not play with the appliance.

### ► Charging the shaver

Do not use any power cord, AC adaptor or recharger other than one specifically designed for this model (RE7-51). Plug in the

adaptor into a household outlet where there is no moisture and handle it with dry hands. The shaver and the recharger may become warm during use and charging. However, this is not a malfunction. Do not charge the shaver where it will be exposed to direct sunlight or other heat sources. Hold the adaptor when disconnecting it from the household outlet. If you tug on the power cord, you may damage it. The supply cord cannot be replaced. If the cord is damaged, the appliance should be scrapped.

### ► Cleaning the shaver

Warning - Disconnect the power cord from the shaver before cleaning it to prevent electric shock.

Keep both the inner blades inserted. If only one of the inner blades is inserted, the shaver may be damaged. If you clean the shaver with water, do not use salt water or hot water. Do not soak the shaver in water for a long period of time. Wipe it with a cloth dampened with soapy water. Do not use thinners, benzene, alcohol or other chemicals to clean.

### ► Storing the shaver

Disconnect the power cord when storing the shaver. Do not bend the power cord or wrap it around the shaver. Keep these operating instructions in a safe place.

### ► Self-cleaning recharger

Do not clean the adaptor or the self-cleaning recharger in water as it will damage them or cause an electric shock. Do not remove the shaver from the self-cleaning recharger while using a mode that includes the "Dry" function. A heater is used so the area around the blades becomes extremely hot and you may burn yourself.

Place the self-cleaning recharger on a level and stable surface. Otherwise the cleaning liquid may spill and discolor leather products or other surfaces. Wipe it immediately. The self-cleaning recharger cleans the inner blades and the system outer foil. Brush or wash with water to remove beard trimmings in other areas.

## SPECIFICATIONS

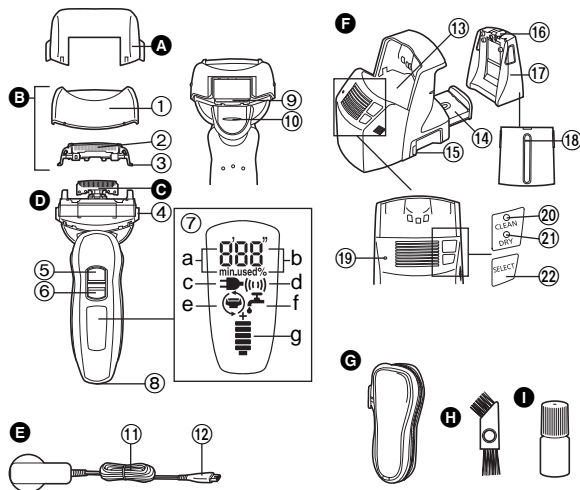
Power source: See the name plate on the product.  
(Automatic voltage conversion)

Motor voltage: 3.6 V DC

Charging time: 1 hour

This product is intended for household use only.

## Parts identification



- A Protective cap
- B Outer foil section
  - ① Foil frame
  - ② System outer foil
  - ③ System outer foil release buttons
- C Inner blades
- D Main body
  - ④ Foil frame release buttons
  - ⑤ OFF/ON switch
  - ⑥ Switch lock button
  - ⑦ LCD panel
    - a. Used time
    - b. Battery capacity
    - c. Charge status
    - d. Sonic vibration
    - e. Foil/blade check
    - f. Clean
    - g. Battery capacity
  - ⑧ Appliance socket
  - ⑨ Trimmer
- E Adaptor (RE7-51)
  - ⑪ Power cord
  - ⑫ Appliance plug
- F Self-cleaning recharger (Referred to as the "Recharger".)
  - ⑬ Cleaning tray
  - ⑭ Detergent cartridge
  - ⑮ Socket
  - ⑯ Water tank cap
  - ⑰ Water tank
  - ⑱ Water maximum line
  - ⑲ STATUS lamp
  - ⑳ CLEAN lamp
  - ㉑ DRY lamp
  - ㉒ SELECT button
- G Soft case
- H Cleaning brush
- I Oil
- ⑩ Trimmer handle

## Operating environment for the self-cleaning recharger

Operating temperature: 15-35 °C  
Operating humidity: Less than 95%

- If you use the self-cleaning recharger in temperatures outside the above range, the following problems may occur.
  - The time it takes to charge the shaver increases.
  - The recharger stops functioning.
  - The lifespan of the rechargeable battery shortens. (Only when you use the recharger in lower temperatures.) In this case, the indicators on the LCD panel will blink twice every second.
- If the indicators on the LCD panel do not glow, wait for a short

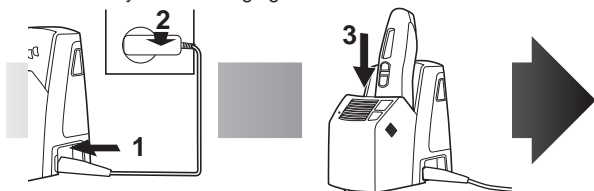
while until it glows.

- Depending on the environment, the shaver may not dry even if you select a mode that includes the "Dry" function. In this case, wipe off any drops of water with a dry cloth.

**Charge**

## Charging with the self-cleaning recharger

Thoroughly wipe off any drops of water on or around the recharger so that it is dry before charging it.



**1** Insert the appliance plug.

**2** Plug in the adaptor.

**3** Remove the protective cap and then attach the shaver.

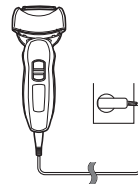
- Turn the shaver off before attaching.
- Check that the outer foil is not deformed or damaged when you are attaching the shaver.
- The indicators on the LCD panel glow and charging starts.
- Charging is completed when the indicators on the LCD panel blink.  
(Max. 1 hour later)
- You can keep the shaver attached to the recharger, or connected

to the adaptor, when not using it to maintain full battery capacity. You cannot overcharge the shaver.

### Charging without the self-cleaning recharger

You can also charge without the recharger.

1. Insert the appliance plug into the shaver.
2. Plug in the adaptor into a household outlet.



## About the LCD panel

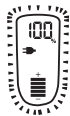
The LCD panel shows the remaining battery capacity from 0% to 100%, in 10% increments.

While charging



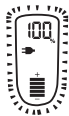
The indicators glow.

After charging is completed



The indicators blink once every second.

10 minutes after charging is completed



The indicators blink once every 2 seconds.

During use



The used time is shown.

- The indicators turn off after 5 seconds.
- The shown time returns to [0'00"] after 10 minutes.

After use



The used time and the remaining battery capacity are shown alternately after turning off the shaver.

When the battery capacity is low



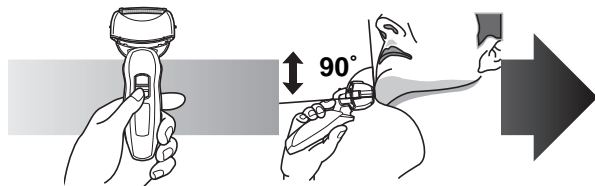
- You can shave 1 to 2 times after "10%" appears. (This will differ depending on usage.)

"10%" appears and  blinks.

- A full charge will supply enough power for approx. 14 shaves of 3 minutes each.

Shave

## Using the shaver



- 1** Slide the switch lock button downwards and press the OFF/ON switch.
- 2** Hold the shaver as illustrated above and shave.

Start out shaving by applying gentle pressure to your face. Stretch your skin with your free hand and move the shaver back and forth in the direction of your beard. You may gently increase the amount of pressure as your skin becomes accustomed to this shaver. Applying excessive pressure does not provide a closer shave.

### ► Using the trimmer handle

You can change the pivot action. Also, slide the handle up to "mm" when using the trimmer.

#### FREE

You can move the shaver head.



#### LOCK

You can lock the shaver head.



#### mm

Slide the trimmer handle up. Place at a right angle to your skin and move downwards to trim your sideburns.



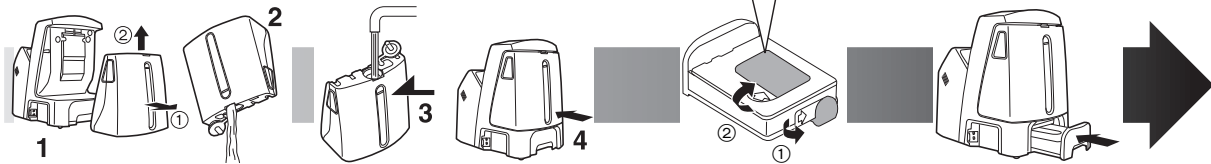
## Cleaning with the self-cleaning recharger

### Precautions

- Keep out of reach of children.
- Only use to clean the blades of electric shavers.
- Carry out emergency measures if the Cleaning agent enters mouth or eyes, and consult a doctor.

### ▶ Preparing the self-cleaning recharger

Remove the shaver and the appliance plug from the self-cleaning recharger.



**1** Remove the water tank and then open the water tank cap.

**2** Wash away the old cleaning liquid and then rinse the water tank.

**3** Pour tap water into the water tank.

- Do not let the water rise above the maximum water line. This may cause the cleaning liquid to spill.

**4** Securely close the water tank cap and then attach the tank.

**5** Peel off the seals from the new detergent cartridge. (2 seals)

- Hold the detergent cartridge horizontally. (The detergent may spill if the detergent cartridge is tilted too much.)

**6** Attach the detergent cartridge.

- Replace the detergent cartridge when the status lamp is illuminated. Use the below chart as a guide.

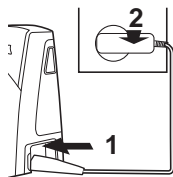
Shaving	Cleaning	Reusability
1 time/day	1 time/day	approx. 30 times
	1 time/3 days	approx. 10 times
	1 time/week	approx. 4 times

The expiration date of the cleaning liquid is 6 months after it is opened. If you do not use the cleaning liquid for more than 6 months, throw away the detergent cartridge and the cleaning liquid.

- Only use self-cleaning recharger detergent for Panasonic shavers.
- Always change the detergent cartridge and the cleaning liquid in the water tank at the same time. Adding water, or changing just the detergent cartridge or the water, will result in deteriorated cleaning functions.
- If you operate the self-cleaning recharger, the concentrated detergent in the detergent cartridge dilutes and the water inside the tank will become a cleaning liquid.

## ► Cleaning the shaver

**1** Insert the appliance plug.

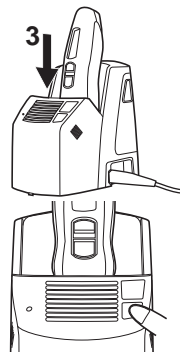


**2** Plug in the adaptor.

- Remove any soap or water on the shaver if it has been washed with hand soap or any other detergent.

**3** Remove the protective cap and then attach the shaver.

- Turn the shaver off before attaching.
- Check that the outer foil is not deformed or damaged when you are attaching the shaver.



**4** Press [SELECT] to select the function.

- The "Charge" function starts when attaching the shaver.
- Each time you press [SELECT], the function changes from "Clean/Dry/Charge" → "Dry/Charge" → "Charge".
- The function will start approximately 6 seconds after it has been selected.
- The function will be aborted if the power is cut off. In this case, perform the function again from the beginning.
- Do not detach the detergent cartridge or the water tank as the cleaning liquid may spill causing a malfunction.

Function	Function selection indications	Time required (guide)
<b>1</b> Charge ↓ [SELECT]		Charge (0 to 60 min)
<b>2</b> Clean/Dry/Charge ↓ [SELECT]		Clean (10 min) ↓ Dry (80 min [170 min in low temperature]) ↓ Charge (0 to 60 min)
<b>3</b> Dry/Charge		Dry (180 min) ↓ Charge (0 to 60 min)

► Follow the steps outlined below if the status lamp blinks or glows during the “Clean/Dry/Charge” function.

#### Blinks

Correctly set the detergent cartridge and then restart a function.



#### If the status lamp goes out

Continue the function.



#### When an abnormality has been corrected

Press and hold [SELECT] for approximately 2 seconds to turn off the status lamp and then restart a function.



#### When the status lamp goes out

Continue the function.

#### Glows

Remove the shaver from the self-cleaning recharger and then check that the [CLEAN] lamp has gone out. (Be careful as the blade may be hot or wet.) Check that the water tank is correctly attached, the water tank cap is securely closed and the self-cleaning recharger is placed horizontally.



#### When no abnormality was found

It is time to replace the detergent cartridge and cleaning liquid inside the water tank. Drain the old cleaning liquid inside the water tank and then refill it with water. Replace the old detergent cartridge and then restart the function.



#### When the status lamp glows again

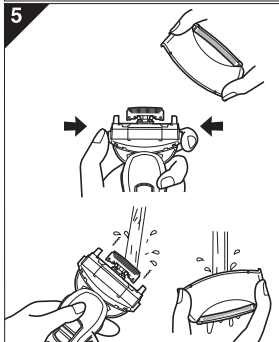
Contact an authorised service center.


## Cleaning the shaver without the self-cleaning recharger

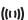
4



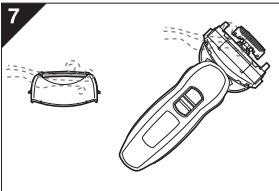
5



We recommend that you clean your shaver with the self-cleaning recharger or the turbo mode for “sonic” vibration cleaning when the faucet symbol  appears on the LCD panel.

1. Disconnect the power cord from the shaver.
2. Apply some hand soap and some water to the outer foil.
3. Slide the switch lock button downwards to unlock the OFF/ON switch.
4. Press the OFF/ON switch for more than 2 seconds to activate the turbo mode for “sonic” vibration cleaning.
  -  appears on the LCD panel.
  - After about 20 seconds, it will be automatically turned off, or you can turn it off by pressing the OFF/ON switch.
5. Remove the outer foil section and press the OFF/ON switch for more than 2 seconds to activate the turbo mode for “sonic” vibration cleaning and clean it with running water.
6. Wipe off any drops of water with a dry cloth.





7. Dry the outer foil section and the shaver completely.
8. Attach the outer foil section to the shaver.
9. Lubricate the shaver.

#### Caution for turbo mode


- Shaving in turbo mode may damage your skin. Turn the shaver off and then on again to cancel turbo mode.
- Do not place your fingers on the OFF/ON switch while using the shaver. This may cause the shaver to turn off or enter turbo mode.

#### Lubrication

To maintain shaving comfort, it is recommended that the oil provided with the shaver is used.

1. Switch off the shaver.
  2. Apply one drop of oil to each of the outer foils.
  3. Raise the trimmer and apply a drop of oil.
  4. Switch the shaver on, and run it for approximately five seconds.
  5. Switch off the shaver, and wipe off any excess oil from the outer foils with a soft cloth.
- It is not necessary to oil the blades after using the self-cleaning recharger (lubricant is included in the cleaning detergent).

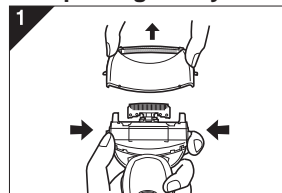
## Replacing the system outer foil and the inner blades

When  appears on the LCD panel, approx once a year (this will differ depending on usage). It is recommended to replace the system outer foil and check the inner blades.

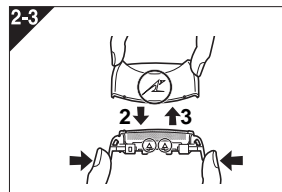
- Press the OFF/ON switch for more than 30 seconds to delete .




system outer foil	once every year
inner blade	once every two years

### ► Replacing the system outer foil

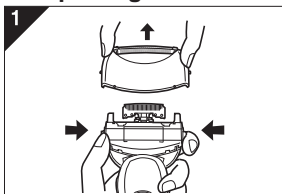


1. Press the foil frame release buttons and lift the outer foil section upwards as illustrated.
2. Press the system outer foil release buttons and pull down the system outer foil as illustrated.



3. Align the foil frame  and the system outer foil  mark and securely attach together.
  - The system outer foil cannot be reversely attached.
  - Always insert the system outer foil to the foil frame when attaching to the shaver.
4. After turning the  mark to the front, securely attach the outer foil section to the shaver until it clicks.

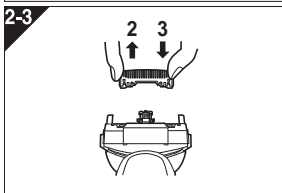
## ▶ Replacing the inner blades



1. Press the foil frame release buttons and lift the outer foil section upwards as illustrated.

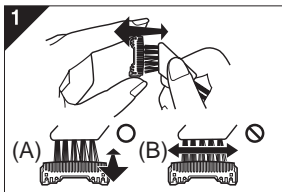
2. Remove the inner blades one at a time as illustrated.

- Do not touch the edges (metal parts) of the inner blades to prevent injury to your hand.



3. Insert the inner blades one at a time until they click as illustrated.

## Cleaning with the brush



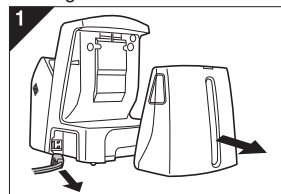
1. Clean the inner blades using the short brush by moving it in direction (A).

Clean the system outer foil, the shaver body and the trimmer using the long brush.

- Do not move the short brush in direction (B) as it will damage the inner blades and affect their sharpness.
- Do not use the short brush to clean the outer foils.

## Cleaning the self-cleaning recharger

Beard trimmings may become attached to the cleaning tray of the self-cleaning recharger. Follow the steps below to remove them. We recommend doing this each time you change the detergent cartridge.

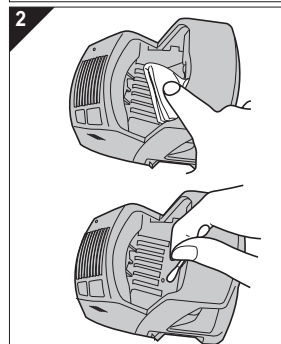


1. Be sure to remove the water tank and the appliance plug from the self-cleaning recharger.

- Be careful not to spill the cleaning liquid.

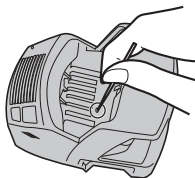
2. Gently wipe off any beard trimmings attached to the inside of the cleaning tray with a cloth or tissue paper dampened with water.

- Clean the corners and uneven parts of the cleaning tray with a cotton swab dampened with water.



- Do not pull hard on the rubber blade protector at the bottom of the cleaning tray. The rubber may come off if you pull hard on it. It is only necessary to pull it up slightly.
- Warning - Do not wash or apply water to the adaptor or self-cleaning recharger. Failure to observe this may cause electric shock or result in short circuits.

### ► When the water does not drain from the cleaning tray

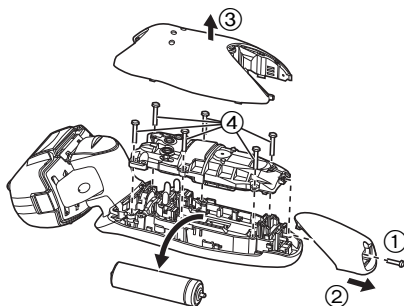


Beard trimmings may clog the drain at the bottom of the cleaning tray.  
In this case, you cannot clean or dry the shaver.  
Push the beard trimmings down through the drain with a tooth pick etc.

### Removing the built-in rechargeable battery

Remove the built-in rechargeable battery before disposing of the shaver. Please make sure that the battery is disposed of at an officially designated location if there is one. Do not dismantle or replace the battery so that you can use the shaver again. This could cause fire or an electric shock. Replace it at an authorised service center.

- Disconnect the power cord from the shaver when removing the battery.
- Perform steps ① to ④ and lift the battery, and then remove it.



### For environmental protection and recycling of materials

This shaver contains a Lithium-ion battery.  
Please make sure that the battery is disposed of at an officially assigned location, if there is one in your country.

Panasonic Electric Works Co., Ltd.  
<http://panasonic.net>