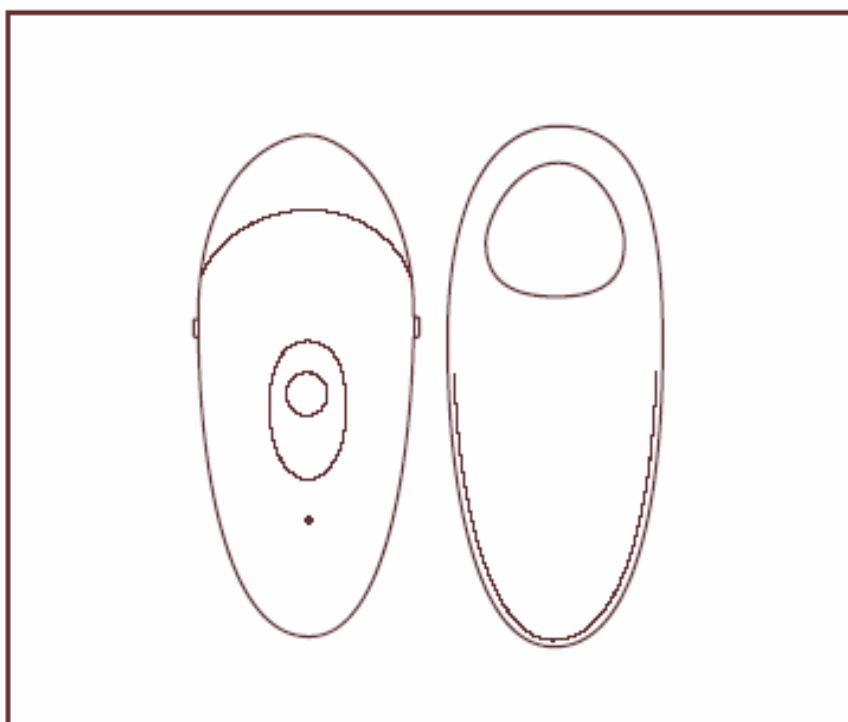


Panasonic®

Operating Instructions Epilator

Model No. ES2067



Before operating this unit, please read these instructions completely and save them for future use.

► Before use

- Make sure skin is clean before and after use. Failure to do so might cause infection and inflammation.
- Do not use the appliance if you have eczema, rashes, sensitive skin, proneness to infections, varicose veins, diabetes, hemophilia, poor blood clotting or other skin conditions.
- Using just before swimming and sports activities or sharing with other persons might result in bacteria entering the skin and causing damage and inflammation.
- Turning on the appliance without an epilation or shaver head attached might cause finger injury, hair entanglement in the spinning gears or mechanical malfunction.
- The followings might cause sensitive skin damage, injury, inflammation, pain, bleeding, and severe pain.
 - Using the appliance if the epilation discs, the float guard/the skin protector or the outer foil have been damaged.
 - Using on or near your face, genitals, warts, pimples, bruises, rashes, wounds or loose skin.
 - Applying strong pressure to the skin, repeatedly moving over the same area or using a jabbing motion.
 - Using before or during menstruation, pregnancy, about one month after giving birth, when ill and when your skin is sunburned etc.

The appliance can be used for wet or dry epilation. The following is the symbol for a wet epilator. It means that the appliance can be used in a bath or shower.

**► Safety precautions**

- Never use the charger in the bathroom.
- Always ensure the appliance is used on an electric power source matched to its rated voltage.
- Do not bend, twist, pull or modify the cord.
- Do not wrap the cord tightly around the appliance.
- Never use the appliance if the cord or the charger is damaged or overly hot or if the plug fits loosely in a household outlet.
- Regularly clean the cord connector to prevent dust.

- Do not drop or hit the appliance as the float guard/the skin protector or the epilation discs can be damaged.
- The movement of the discs makes some noise but this is perfectly normal.
- Keep the appliance out of the reach of children or invalids.
- This appliance is not intended for use by persons (including children) with reduced physical, sensory or mental capabilities, or lack of experience and knowledge, unless they have been given supervision or instruction concerning use of the appliance by a person responsible for their safety. Children should be supervised to ensure that they do not play with the appliance.
- Do not leave the appliance near sinks, bathrooms or other high-humidity areas where it could be exposed to water and moisture after use.
- The followings might cause mechanical malfunction.
 - Using nail polish remover, benzine, alcohol, etc. to clean the appliance.
 - Leaving the appliance where it will be exposed to high temperatures or direct sunlight.
- Contact an authorized service center if the epilator or the cord get damaged.

Before use

Changing the head

1. Remove the head while holding the head release buttons.
2. Push the head until it clicks.

Charging

Charging the appliance

1. Plug the charger into the epilator (a) and a household outlet (b).
2. Charge the appliance for approximately 1 hour. (Charging is completed when the charging light blinks.)



- The epilator can be used for approximately 30 minutes after 1 hour charge.



- While charging: Red light appears.
- After charging is completed: Blinks once every second.
- 10 minutes after charging is completed: Blinks once every 2 seconds.
- Abnormal Charging: Blinks twice every second.

- The charge light may not turn on after a few minutes in some cases. However, it will turn on eventually if you continue charging.
- The appliance can be left plugged in after it is fully charged without deteriorating the battery life.
- The recommended charge temperature is 15-35 °C.
If you use the charger in temperature outside of the recommended range, the following problems might occur.
 - The time it takes to charge the appliance increases. (approximately 3 hours)
 - The charger stops functioning.
- If you use the charger in low temperature, the battery life might be reduced.
- The charger can be positioned in a vertical or horizontal position.

Using

Wet/foam epilation

Do not use the epilation head for legs/arms to epilate your underarms and bikini-line.

- Trim your hair before epilating for the first time or if you have not epilated for a long time.
- The recommended use temperature is 5-35 °C.
If you use the appliance in temperature outside of the recommended range, it may stop functioning or might reduce the operating time.

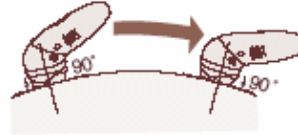
- 1. Wet your skin.**
- 2. Remove the cap (only the epilation head for underarms/bikini-line).**
- 3. Wet the discs and place a small quantity of liquid body soap on the discs.**
- 4. Press the 0/1 switch to turn on the power and then epilate.**
 - Foam makes the epilator slide better, so you can move it fast. Always wash the discs well after use to remove any residual soap.



Dry epilation

You can also epilate without wetting your skin or the discs.

Apply the epilator at a right angle to your skin and press gently while moving it slowly against the hair growth, or your skin may be damaged.



- When using the appliance, pull your skin taut where the area is prone to sagging (on the inside of the knees and elbows).
- Rub your skin to lift short hair.
- Do not remove the frame of the epilation head.
- Do not use if your hair is longer than 5 mm.
- Reddening might appear for your first use. Cool towel will help if you feel pain or there is a rash.
- We recommend regular use of massage sponges or exfoliation to prevent ingrown hair.

Moving directions

<Epilation head for legs/arms>

Move freely in any direction.

<Epilation head for underarms/bikini-line>

Move in several directions as underarm hair grows in different directions.

Move the epilator with the side that has the foam keeper facing the front.

1. Attach the shaver head.

2. Wet your skin.

- Shaving with soap lather makes the skin slippery for a closer shave.
- Do not use shaving cream, skin cream or skin lotion as it will clog the blades.

3. Press the 0/1 switch to turn on the power.

- Hair removal is easier and less painful when the hair is short.
- Slide the pop-up trimmer switch up to cut long hair.
- Press gently so that the whole of the blade is in close contact with the skin and the surface of the blade does not move up and down.

Shaving the bikini-line with the bikini comb

Place the bikini comb onto the shaver head and slide trimmer up.

- When the bikini comb is in place, make sure the comb is in close contact with the skin.

Dry shaving

You can also shave without wetting your skin or the discs.

Cleaning

Cleaning the epilator

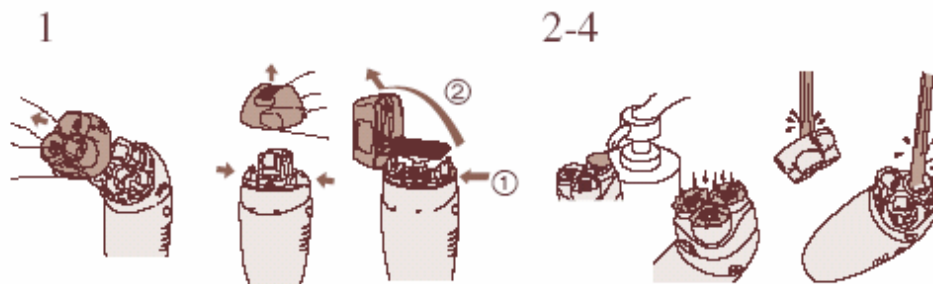
Switch off and unplug the appliance before cleaning.

- Always unplug the charger from a household outlet and from the epilator before cleaning the appliance.
- Wipe the main body only with a dry cloth. The use of alcohol etc. might cause discoloration or deformation of the main body.
- When storing the epilator, always attach the protection cap for the epilation head for underarms/bikini-line, and the bikini comb for the shaver head and put the epilation head for legs/arms on the stand.

Washing your epilator

Always clean the frames and discs after use to keep them in a hygienic state.

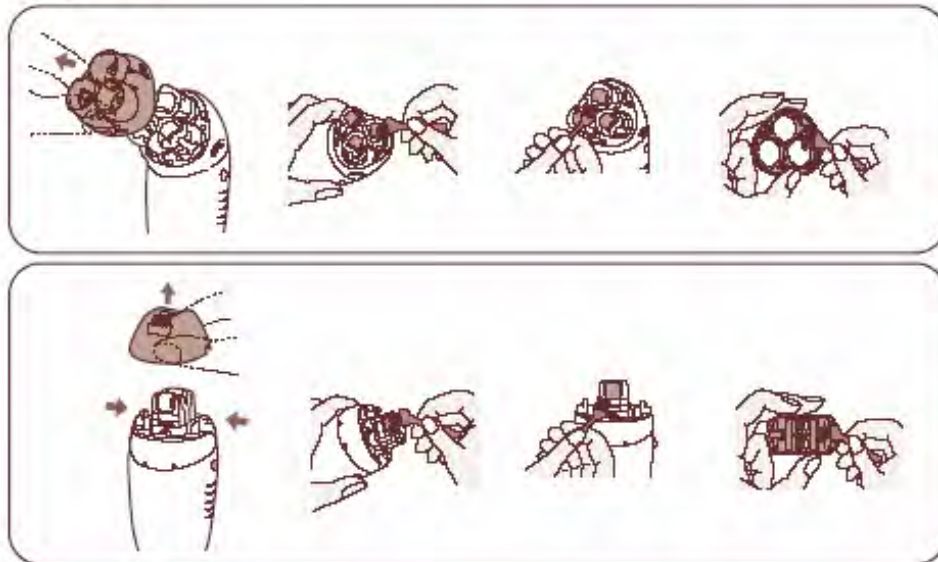
- Take care not to damage the float guard/skin protector during cleaning.



1. Remove the frame by pushing the frame release button.
2. Apply liquid hand soap to the discs and blade.
3. Turn the switch on and then wet the discs to create foam.
4. Wash the head with water to clean hair.
 - Do not use hot water.
 - If soap is not completely washed away, then a white deposit can accumulate and prevent the blades from moving smoothly.
5. Turn the switch off, wipe the appliance with a dry cloth and dry it well.

Cleaning your epilator with the supplied brush

You can also clean the **epilation head** and the **shaver head** with the cleaning brush.



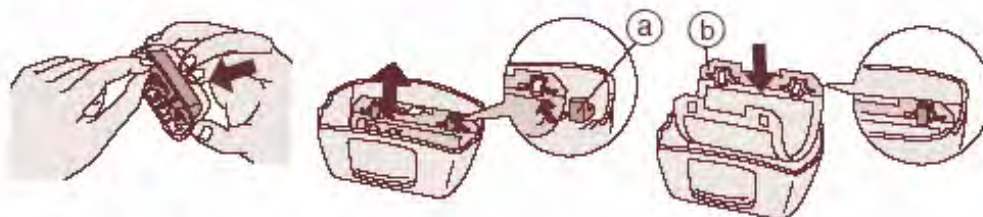
Replacing

Replacing the outer foil

Replace the shaving foil and the inner blade when you notice reduced shaving performance. Never remove the outer foil of the shaver head for any other reason than to change it.

Removing the outer foil

While pushing the outer foil gently with the fingers, use a fingernail to release the plastic panel (b) on the blade from the catches (a) on the inside of the frame.



Fitting the new outer foil

Hold the outer foil so that the surface with the plastic panel (b) (i.e. the surface that will come into contact with the inner blade) faces upward and

then insert it into the frame so that the catches ③ on the frame fit into the holes on the foil.

- We recommend replacing the outer foil every year and the inner blade every two years.

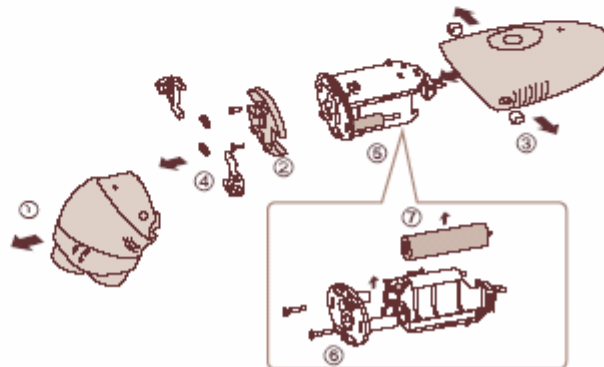
For environmental protection and recycling of materials

This epilator contains Li-ion batteries.

Please make sure that the batteries are disposed of at an officially assigned location, if there is one in your country.

Removing the built-in rechargeable batteries

The batteries in this epilator are not intended to be replaced by consumers. However, they can be replaced at an authorized service center. The procedure below shows how to remove the batteries so that they can be disposed of.



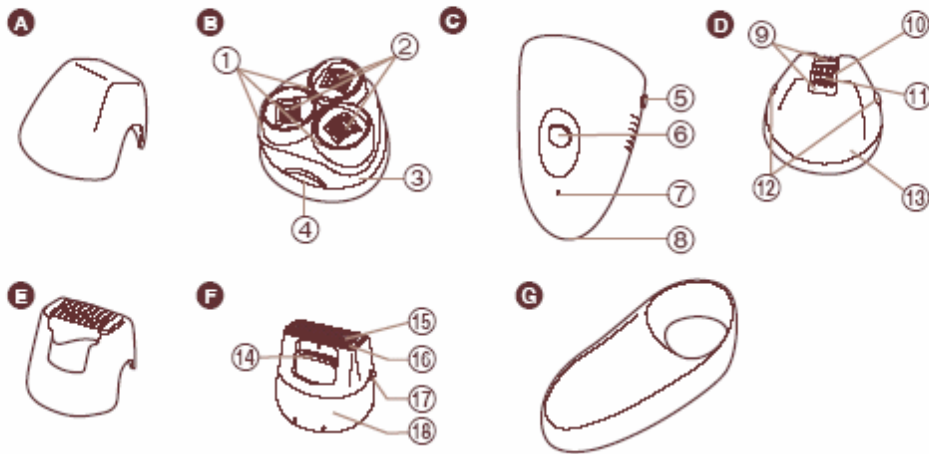
- Unplug the charger from the epilator before disassembling it.
 - Press the 0/1 switch to turn on the power and then keep the power on until the batteries are completely discharged.
 - Using a screwdriver, disassemble the unit in the following order.
 - Please take care not to short-circuit the batteries.
- Perform steps ① to ⑦ to disassemble the epilator.

Specifications
Power source: See the name plate on the product. (Automatic voltage conversion)
Motor voltage: 3.6 V DC
Charging time: 1 hour
This product is intended for household use only.

Subject to change without notice.

READ ALL INSTRUCTIONS BEFORE USE

Parts identification



- A** Protection cap
- B** Epilation head for legs/arms
 - ① Float guard
 - ② Epilation discs (inside)
 - ③ Legs/arms frame
 - ④ Frame release button
- C** Main body
 - ⑤ Head release buttons
 - ⑥ 0/1 switch
 - ⑦ Charging light
 - ⑧ Socket
- D** Epilation head for underarms/
bikini-line
 - ⑨ Foam keeper (on both sides)
 - ⑩ Skin protector (metal part on the outside)
 - ⑪ Epilation discs (inside)
 - ⑫ Frame release buttons
 - ⑬ Underarms frame

- E** Bikini comb
- F** Shaver head
 - ⑭ Pop-up trimmer switch
 - ⑮ Outer foil
 - ⑯ Trimmer
 - ⑰ Frame release button
 - ⑱ Frame
- G** Stand

Accessories:
Charger (RE7-46), cleaning brush
and pouch
(Do not use accessories other than
the accessories provided.)

