

Ref.No.IM-B114-01

Panasonic[®]

Operating Instructions
(Household) Rechargeable Shaver
Model No. ES-LT71



Before operating this unit, please read these instructions completely and save them for future use.

Thank you for choosing a Panasonic shaver. With our WET/ DRY technology, you can enjoy using your Panasonic shaver dry or in the shower or bath for gentle and easy shaving. Please read all instructions before use.

Important

This shaver has a built-in rechargeable battery. Do not throw into fire, apply heat, or charge, use, or leave in a high temperature environment.

► Before use

This WET/DRY shaver can be used for wet shaving with shaving lather or for dry shaving. You can use this watertight shaver in the shower and clean it in water. The following is the symbol of Wet shaver. The symbol means that the hand-held part may be used in a bath or shower.



Treat yourself to wet lather shaves for at least three weeks and notice the difference. Your Panasonic WET/DRY shaver requires a little time to get used to because your skin and beard need about a month to adjust to any new shaving method.

► Using the shaver

Caution

The outer foil is very thin and can be damaged if not used correctly. Check that the foil is not damaged before using the shaver. Do not use the shaver if the foil etc. is damaged as you will cut your skin.

- Terminate the usage when there is abnormality or failure.
- Do not share with your family or other people.

- This appliance is not intended for use by persons (including children) with reduced physical, sensory or mental capabilities, or lack of experience and knowledge, unless they have been given supervision or instruction concerning use of the appliance by a person responsible for their safety. Children should be supervised to ensure that they do not play with the appliance.
- Persons using an implanted medical electronic device, such as a pacemaker, should not allow this unit to touch the skin where the medical electronic device is implanted because this may cause a malfunction.

► Charging the shaver

- Never use the AC adaptor in the bathroom or shower room.
- Do not use any power cord or AC adaptor other than this AC adaptor (RE7-59).
- Plug in the AC adaptor into a household mains socket where there is no moisture and handle it with dry hands.
- Hold the AC adaptor when disconnecting it from the household mains socket. If you tug on the power cord, you may damage it.
- The supply cord cannot be replaced. If the cord is damaged, the AC adaptor should be scrapped.

► Cleaning the shaver

Warning

Disconnect the power cord from the shaver before cleaning it in water to prevent electric shock.

- Keep both the inner blades inserted. If only one of the inner blades is inserted, the shaver may be damaged.
- If you clean the shaver with water, do not use salt water or hot water. Do not soak the shaver in water for a long period of time.
- Clean the housing only with a soft cloth slightly dampened with tap water or soapy tap water. Do not use thinner, benzene, alcohol or other chemicals.

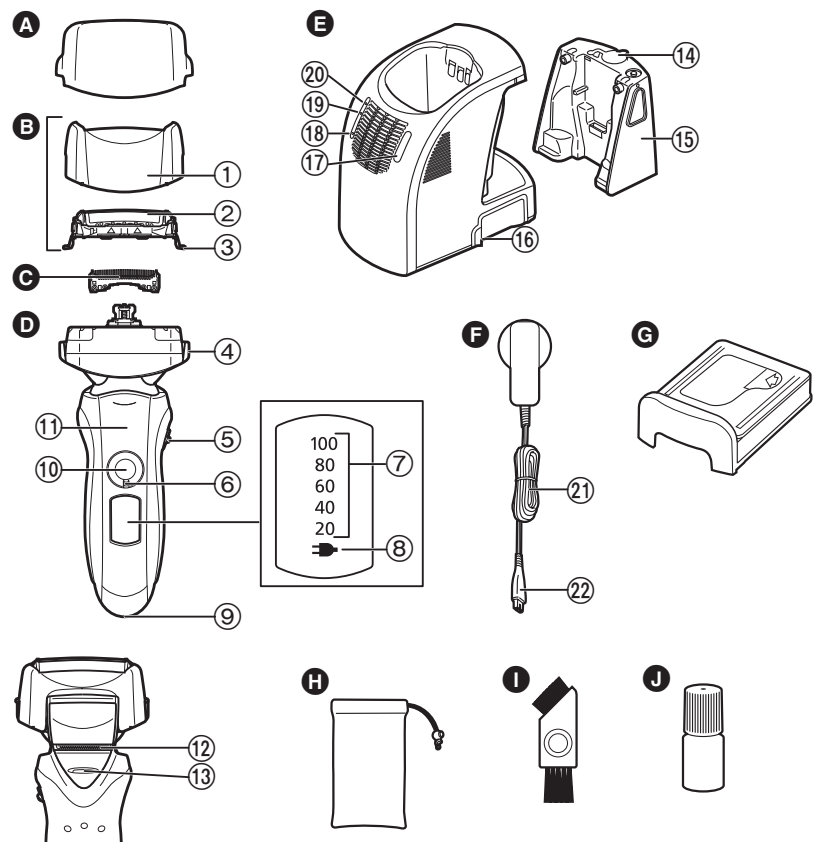
▶ **Storing the shaver**

- Store the shaver in a place with low humidity after use.
- Do not store the shaver where it will be exposed to direct sunlight or other heat sources.
- Disconnect the power cord when storing the shaver.
- Do not bend the power cord or wrap it around the shaver.
- Keep the oil away from children.

▶ **Self-cleaning recharger**

- Do not clean the AC adaptor or the self-cleaning recharger in water as it will damage them or cause an electric shock.
- Do not remove the shaver from the self-cleaning recharger while using a course that includes the “Dry” function. A heater is used so the area around the blades becomes extremely hot and you may burn yourself.
- Place the self-cleaning recharger on a level and stable surface. Otherwise the cleaning liquid may spill and discolor leather products or other surfaces. Wipe up spills immediately.
- The self-cleaning recharger cleans the inner blades and the system outer foil. Brush or wash with water to remove beard trimmings in other areas.
- Use the self-cleaning recharger in humidity less than 95%.
- Depending on the environment, the shaver may not dry even if you select the “Dry/Charge” course. In this case, wipe off any drops of water with a dry cloth.

Parts identification



- A** Protective cap
- B** Outer foil section
 - ① Foil frame
 - ② System outer foil
 - ③ System outer foil release buttons
- C** Inner blades
- D** Main body
 - ④ Foil frame release buttons
 - ⑤ Pivot action selector
 - ⑥ Lock ring
 - ⑦ Battery capacity lamp
 - ⑧ Charge status lamp (→)
 - ⑨ Appliance socket
 - ⑩ Power switch [0/1]
 - ⑪ Finger rest

- ⑫ Trimmer
- ⑬ Trimmer handle
- E** Self-cleaning recharger
- ⑭ Water tank cap
- ⑮ Water tank
- ⑯ Socket
- ⑰ SELECT button
- ⑱ STATUS lamp
- ⑲ DRY lamp
- ⑳ CLEAN lamp
- F** AC adaptor (RE7-59)
- ㉑ Power cord
- ㉒ Appliance plug
- G** Detergent cartridge
- H** Travel pouch
- I** Cleaning brush
- J** Oil

Using the lock ring

Use the lock ring to lock or unlock the power switch.

1. Rotate the lock ring until it clicks.



Unlock the power switch:

For when shaving, washing the shaver, lubricating the shaver.



Lock the power switch:

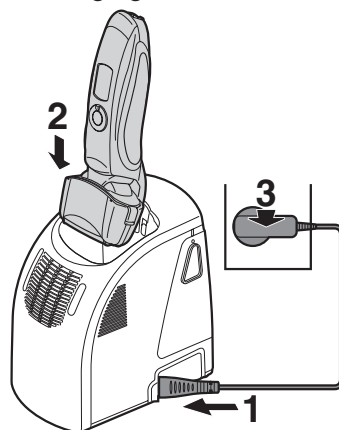
For when carrying the shaver.

Charge

Charging with the self-cleaning recharger

Thoroughly wipe off any drops of water on or around the self-cleaning recharger so that it is dry before charging the shaver.

- 1** Insert the appliance plug into the self-cleaning recharger.
- 2** Remove the protective cap and then attach the shaver.
- 3** Plug in the AC adaptor.



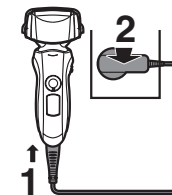
- The “Charge” course starts when attaching the shaver.
- Turn the shaver off before attaching.
- Check that the outer foil is not deformed or damaged when you are attaching the shaver.
- You can charge even with the STATUS lamp of the self-cleaning recharger blinking.
- Charging is completed after approx. 1 hour.

You can keep the shaver attached to the self-cleaning recharger, or connected to the AC adaptor, when not using it to maintain full battery capacity. You cannot overcharge the shaver.

Charging without the self-cleaning recharger

You can also charge without the self-cleaning recharger.

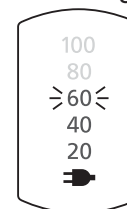
1. Insert the appliance plug into the shaver.
2. Plug in the AC adaptor into a household mains socket.



You cannot operate the shaver while charging.

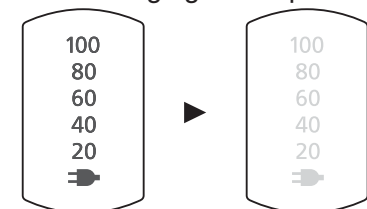
Reading lamps when charging

While charging



The charge status lamp (➡) glows.
The number of the battery capacity lamp will increase as charging progresses.

After charging is completed

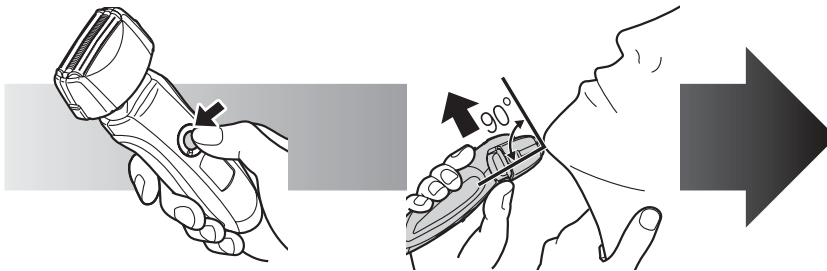


All the battery capacity lamps will light up and then turn off after 5 seconds.

- After charging is completed, turning the power switch ON with the shaver plugged in will cause all the battery capacity lamps to light up and then turn off after 5 seconds. This shows that the shaver is fully charged.
- Recommended ambient temperature for charging is 5-35 °C. The battery may not charge properly or at all under extreme low or high temperatures. The charge status lamp (➡) will blink when there is a problem with charging.
- When charging the shaver for the first time or when it has not been in use for more than 6 months, the charge status lamp (➡) may not glow. It will eventually glow if kept connected.

Shave

Using the shaver



- 1 Rotate the lock ring and press the power switch.**
- 2 Hold the shaver as illustrated above and shave.**

Page 4

- We recommend using the shaver in an ambient temperature range of 5 - 35 °C. If used outside this range, the appliance may stop operating.

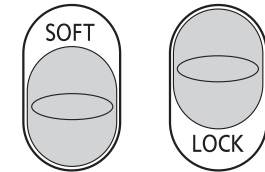
Start out shaving by applying gentle pressure to your face. Stretch your skin with your free hand and move the shaver back and forth in the direction of your beard. You may gently increase the amount of pressure as your skin becomes accustomed to this shaver. Applying excessive pressure does not provide a closer shave.

Caution

- If you press the power switch for more than 2 seconds, the sonic vibration cleaning mode is activated. **Page 9**
You cannot shave in this mode.
- Do not place your fingers on the power switch while using the shaver. This may cause the shaver to turn off or enter the sonic vibration cleaning mode. Place your fingers on the finger rest while using the shaver.

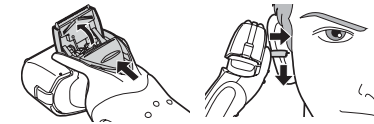
Pivot action selector

Use to select “SOFT” (soft) or “LOCK” (lock).
You can change the pivot action whether the shaver is turned on or off.



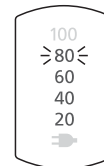
Using the trimmer

Slide the trimmer handle up. Place at a right angle to your skin and move downwards to trim your sideburns.



Reading lamps when using

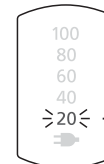
While using



- Approximate amount of battery charge is displayed as 20 - 100 (%).

- It will turn off approximately 5 seconds after operating the switch.

When the battery capacity is low



“20%” blinks when operating the shaver.

- You can shave 2 to 3 times after “20%” appears. (This will differ depending on usage.)
- A full charge will supply enough power for approx. 14 shaves of 3 minutes each.

Care

Cleaning with the self-cleaning recharger

► Preparing the self-cleaning recharger

Remove the shaver and the appliance plug from the self-cleaning recharger.

1 Remove the water tank and then open the water tank cap.

2 Wash away the old cleaning liquid and then rinse the water tank.

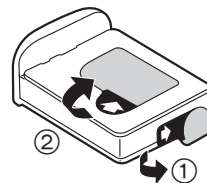
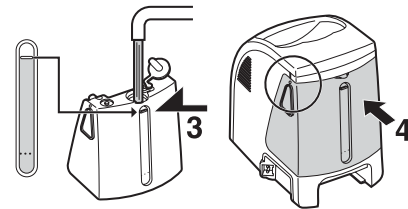
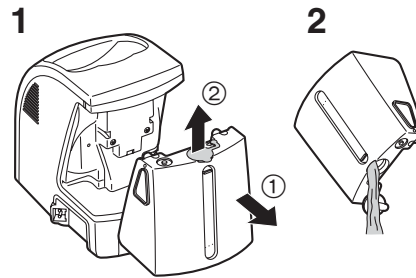
3 Pour tap water into the water tank.

- Do not let the water rise above the maximum water line. This may cause the cleaning liquid to spill.

4 Securely close the water tank cap and then attach the tank.

5 Peel off the seals from the new detergent cartridge. (2 seals)

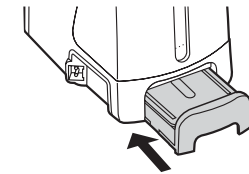
- Hold the detergent cartridge horizontally. (The detergent may spill if the detergent cartridge is tilted too much.)



Precautions for the detergent cartridge

- Keep out of reach of children.
- Only use to clean the blades of electric shavers.
- Carry out emergency measures if the Cleaning agent enters mouth or eyes, and consult a doctor.

6 Attach the detergent cartridge.



- Replace the detergent cartridge when the status lamp is illuminated.
- The expiration date of the cleaning liquid is 6 months after it is opened. If you do not use the cleaning liquid for more than 6 months, throw away the detergent cartridge and the cleaning liquid.
- Only use self-cleaning recharger detergent for Panasonic shavers.
- Always change the detergent cartridge and the cleaning liquid in the water tank at the same time. Adding water, or changing just the detergent cartridge or the water, will result in deteriorated cleaning functions.
- If you operate the self-cleaning recharger, the concentrated detergent in the detergent cartridge dilutes and the water inside the tank will become a cleaning liquid.

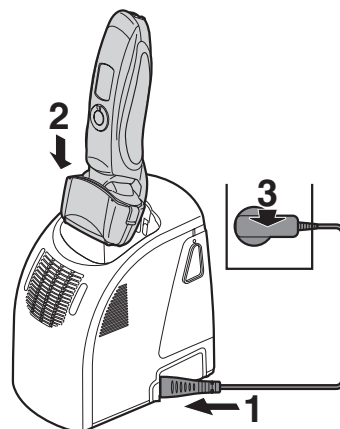
Cleaning the shaver

Use the self-cleaning recharger in temperatures between 15 °C and 35 °C.

1 Insert the appliance plug into the self-cleaning recharger.

2 Remove the protective cap and then attach the shaver.

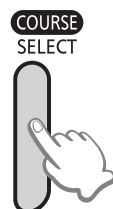
3 Plug in the AC adaptor.



- Remove any soap or water on the shaver if it has been washed with hand soap or any other detergent.
- Turn the shaver off before attaching.
- Check that the outer foil is not deformed or damaged when you are attaching the shaver.

4 Press the **SELECT** button to select the course.

- Each time you press the SELECT button, the course changes from “Clean/Dry/Charge” → “Dry/Charge” → “Charge”.
- The courses start approximately 6 seconds after they are selected.
- The course will be aborted if the power is cut off. In this case, perform the course again from the beginning.
- Do not detach the detergent cartridge or the water tank as the cleaning liquid may spill causing a malfunction.

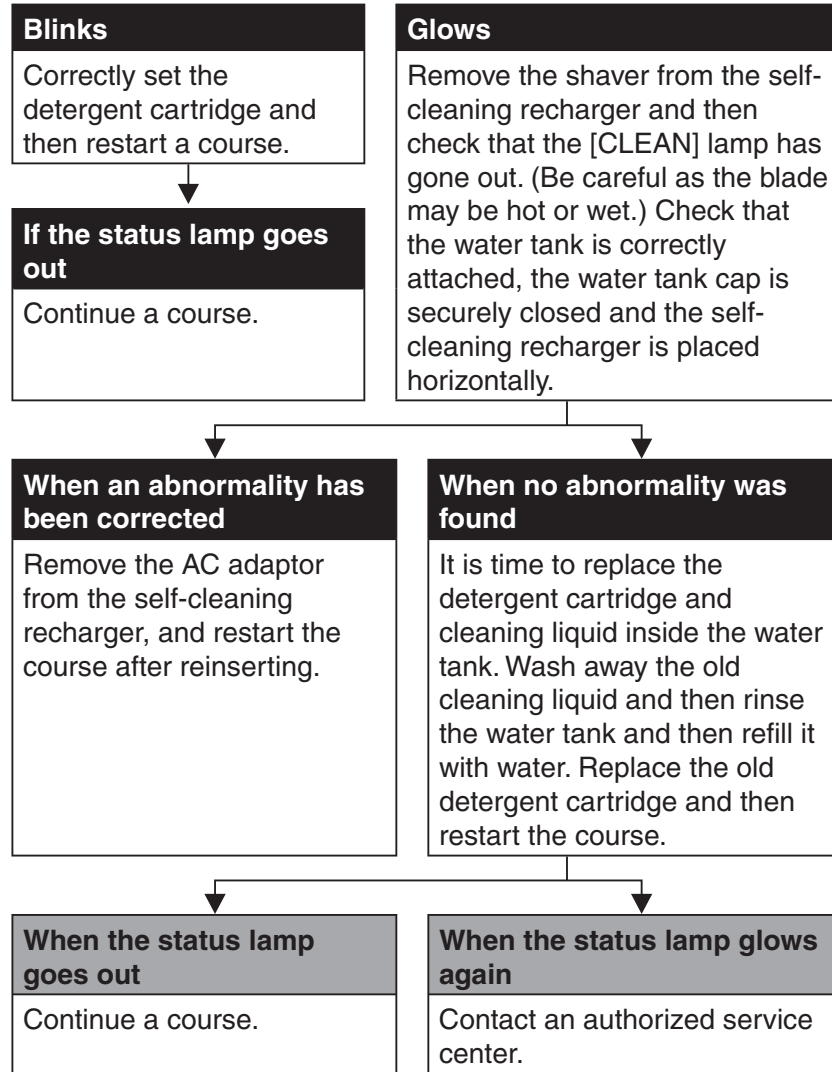


Course	Time required (guide)		
1 Charge 	Charge 0 to 60 min 		
2 Clean/Dry/Charge 	Clean 10 min 	Dry 50 min (80 min*) 	Charge 0 to 60 min
• It is not possible to change the course after the “Clean/Dry/Charge” course has started.			
3 Dry/Charge 	Dry 100 min 	Charge 0 to 60 min 	• It is possible to change to the “Clean/Dry/Charge” course even after the “Dry/Charge” course has started.

* When the ambient temperature of the self-cleaning recharger is low (approx. 15 °C or lower), the time it takes to dry the shaver increases.

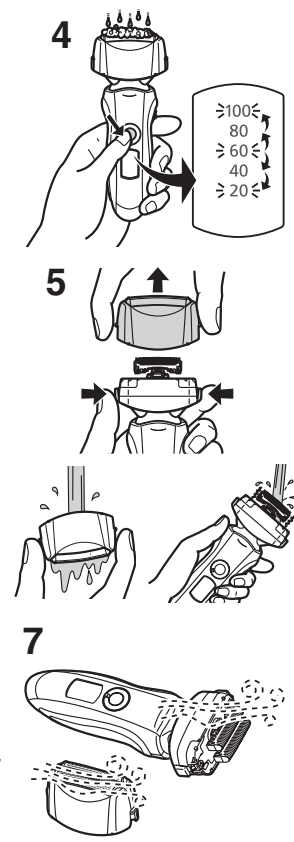
- The Clean or Dry function may stop under extreme low temperatures (approx. 0 °C or lower). In such a case, the CLEAN and DRY lamps will blink when the “Clean/Dry/Charge” course is selected, or the DRY lamp will blink when the “Dry/Charge” course is selected.

► Follow the steps outlined below if the status lamp blinks or glows



Cleaning the shaver without the self-cleaning recharger

1. Disconnect the power cord from the shaver.
2. Apply some hand soap and some water to the outer foil.
3. Rotate the lock ring to unlock the power switch.
4. Press the power switch for more than 2 seconds to activate the sonic vibration cleaning mode.
 - The battery capacity lamps blink in order.
 - After about 20 seconds, it will be automatically turned off, or you can turn it off by pressing the power switch.
5. Remove the outer foil section and press the power switch for more than 2 seconds to activate the sonic vibration cleaning mode and clean it with running water.
6. Wipe off any drops of water with a dry cloth.
7. Dry the outer foil section and the shaver completely.
8. Attach the outer foil section to the shaver.
9. Lubricate the shaver.

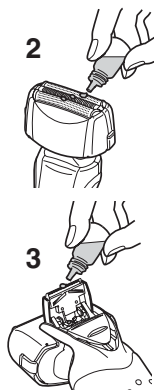


- Drying the shaver with the self-cleaning recharger**
1. Attach the outer foil section to the shaver.
 2. Dry the shaver with self-cleaning recharger using “Dry/Charge” course.
 3. Lubricate the shaver.

Lubrication

To maintain shaving comfort for a long time, it is recommended that the oil provided with the shaver is used.

1. Switch off the shaver.
2. Apply one drop of oil to each of the outer foils.
3. Raise the trimmer and apply a drop of oil.
4. Switch the shaver on, and run it for approximately five seconds.
5. Switch off the shaver, and wipe off any excess oil from the outer foils with a soft cloth.



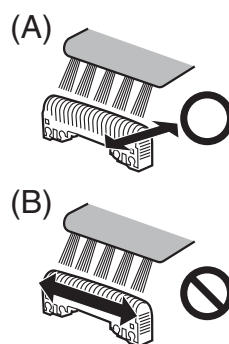
- It is not necessary to oil the blades after cleaning the shaver with the self-cleaning recharger. (Lubricant is included in the cleaning detergent.)

Cleaning with the brush

Clean the inner blades using the short brush by moving it in direction (A).

Clean the system outer foil, the shaver body and the trimmer using the long brush.

- Do not move the short brush in direction (B) as it will damage the inner blades and affect their sharpness.
- Do not use the short brush to clean the outer foils.

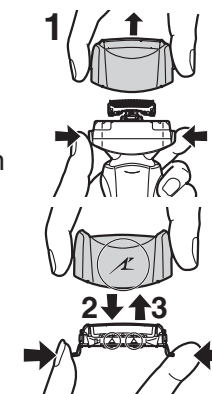


Replacing the system outer foil and the inner blades

system outer foil	once every year
inner blades	once every two years

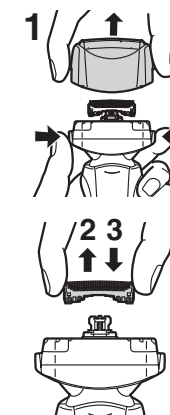
► Replacing the system outer foil

1. Press the foil frame release buttons and lift the outer foil section upwards.
2. Press the system outer foil release buttons and pull down the system outer foil.
3. Align the foil frame mark (↙) and the system outer foil mark (△) and securely attach together.
 - The system outer foil cannot be reversely attached.
 - Always insert the system outer foil to the foil frame when attaching to the shaver.
4. After turning the foil frame mark (↙) to the front, securely attach the outer foil section to the shaver until it clicks.



► Replacing the inner blades

1. Press the foil frame release buttons and lift the outer foil section upwards.
2. Remove the inner blades one at a time.
 - Do not touch the edges (metal parts) of the inner blades to prevent injury to your hand.
3. Insert the inner blades one at a time until they click.



► Replacement parts

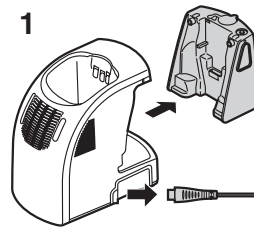
Replacement parts are available at your dealer or Service Center.

Replacement parts for ES-LT71	System outer foil	WES9087
	Inner blades	WES9068

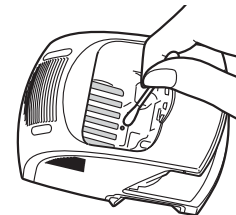
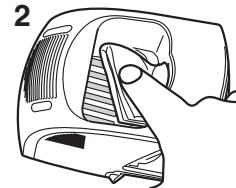
Cleaning the self-cleaning recharger

Beard trimmings may become attached to the cleaning tray of the self-cleaning recharger. Follow the steps below to remove them. We recommend doing this each time you change the detergent cartridge.

1. Be sure to remove the water tank and the appliance plug from the self-cleaning recharger.
 - Be careful not to spill the cleaning liquid.



2. Gently wipe off any beard trimmings attached to the inside of the cleaning tray with a cloth or tissue paper dampened with water.
 - Clean the corners and uneven parts of the cleaning tray with a cotton swab dampened with water.



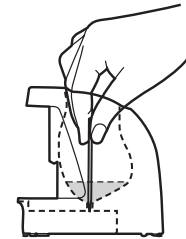
Warning

Do not wash or apply water to the AC adaptor or self-cleaning recharger. Failure to observe this may cause electric shock or result in short circuits.

- Do not pull hard on the rubber blade protector at the bottom of the cleaning tray. The rubber may come off if you pull hard on it. It is only necessary to pull it up slightly.

► When the water does not drain from the cleaning tray

Beard trimmings may clog the drain at the bottom of the cleaning tray. In this case, you cannot clean or dry the shaver. Push the beard trimmings down through the drain with a tooth pick etc.

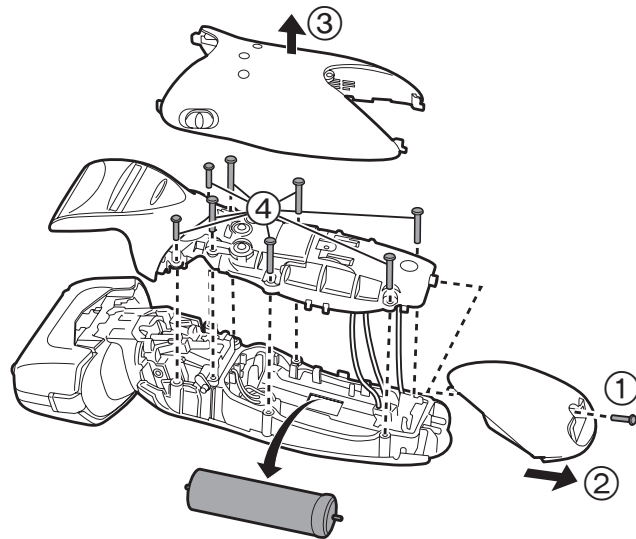


Removing the built-in rechargeable battery

Remove the built-in rechargeable battery before disposing of the shaver. Please make sure that the battery is disposed of at an officially designated location if there is one. Do not dismantle or replace the battery so that you can use the shaver again. This could cause fire or an electric shock. Have the battery replaced by an authorised service centre.

- Disconnect the power cord from the shaver when removing the battery.

- Perform steps ① to ④ and lift the battery, and then remove it.



For environmental protection and recycling of materials
 This shaver contains a Lithium-ion battery.
 Please make sure that the battery is disposed of at an officially assigned location, if there is one in your country.

Specifications

Power source	See the name plate on the AC adaptor. (Automatic voltage conversion)
Motor voltage	3.6 V DC
Charging time	Approx. 1 hour

This product is intended for household use only.

Panasonic Electric Works Wanbao (Guangzhou) Co., Ltd.
<http://panasonic.net>

Ⓕ EN

Printed in China
0000000000 X0000-0