



Panasonic Electric Works Wanbao (Guangzhou) Co., Ltd.
<http://panasonic.net>

Before operating this unit, please read these instructions completely and save them for future use.

Printed in China
0000000000 X0000-0

Thank you for choosing a Panasonic shaver. With our WET/ DRY technology, you can enjoy using your Panasonic shaver dry or in the shower or bath for gentle and easy shaving. Please read all instructions before use.

Important

This shaver has a built-in rechargeable battery. Do not throw into fire, apply heat, or charge, use, or leave in a high temperature environment.

Warning

- Disconnect the power cord from the shaver before cleaning it in water to prevent electric shock.
- Do not use any power cord or adaptor other than this adaptor (RE7-59).
- Terminate the usage when there is abnormality or failure.
- Plug in the adaptor into a household outlet where there is no moisture and handle it with dry hands.
- Never use the adaptor in the bathroom or shower room.
- Do not dismantle or replace the battery so that you can use the shaver again. This could cause fire or an electric shock. Have it replaced at an authorised service center.
- Disconnect the power cord when storing the shaver. Do not bend the power cord or wrap it around the shaver.
- The supply cord cannot be replaced. If the cord is damaged, the adaptor should be scrapped.

Caution

- The outer foil is very thin and can be damaged if not used correctly. Check that the foil is not damaged before using the shaver. Do not use the shaver if the foil is damaged as you will cut your skin.
- Keep both the inner blades inserted. If only one of the inner blades is inserted, the shaver may be damaged.

- If you clean the shaver with water, do not use salt water or hot water. Do not soak the shaver in water for a long period of time.
- Clean the housing only with a soft cloth slightly dampened with tap water or soapy tap water. Do not use thinner, benzene, alcohol or other chemicals.
- Store the shaver in a place with low humidity after use.
- Do not wash the charging stand with water.
- Do not store the shaver where it will be exposed to direct sunlight or other heat sources.
- Hold the adaptor when disconnecting it from the household outlet. If you tug on the power cord, you may damage it.
- Do not share your shaver with other people. Doing so may result in infection or inflammation.

Intended use

- This WET/DRY shaver can be used for wet shaving with shaving lather or for dry shaving. You can use this watertight shaver in the shower and clean it in water. The following is the symbol of Wet shaver. The symbol means that the hand-held part may be used in a bath or shower.



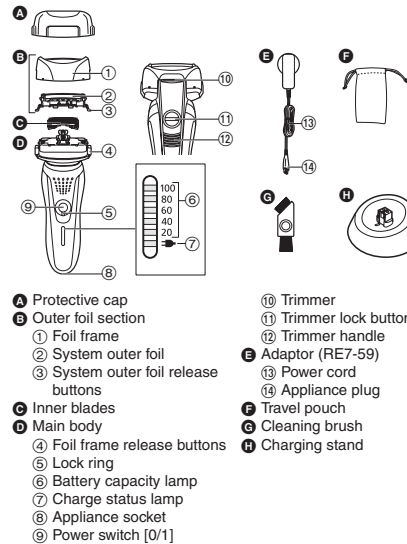
- Treat yourself to wet lather shaves for at least three weeks and notice the difference. Your Panasonic WET/DRY shaver requires a little time to get used to because your skin and beard need about a month to adjust to any new shaving method.

Notes

- This product is intended for household use only.
- This appliance is not intended for use by persons (including children) with reduced physical, sensory or mental capabilities, or lack of experience and knowledge, unless they have been given supervision or instruction concerning use of the appliance by a person responsible for their safety. Children should be supervised to ensure that they do not play with the appliance.

EN

Parts identification



Using the lock ring
Use the lock ring [D 5] to lock or unlock the power switch [D 9].
1. Rotate the lock ring [D 5] until it clicks.

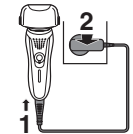
Unlock the power switch:
For when shaving, washing the shaver, lubricating the shaver.

Lock the power switch:
For when carrying the shaver.

Charge

Charging the shaver

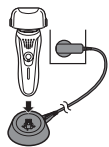
- 1 Insert the appliance plug [E 14] into the shaver.**
 - 2 Plug in the adaptor [E] into a household outlet.**
- Turn the shaver off before attaching.
 - Charging is completed after approx. 1 hour.



You cannot operate the shaver while charging.

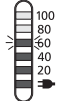
Charging with the charging stand

1. Insert the appliance plug [E14] into the charging stand [E1].
2. Place the shaver on the charging stand [E1] and plug in the adaptor [E2] into a household outlet.



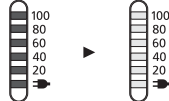
Reading lamps when charging

While charging



The charge status lamp (→) glows.
The level of the battery capacity lamp will increase as charging progresses.

After charging is completed



All the battery capacity lamps will light up and then turn off after 5 seconds.

- After charging is completed, turning the power switch ON with the shaver plugged in will cause all the battery capacity lamps to light up and then turn off after 5 seconds. This shows that the shaver is fully charged.
- Recommended ambient temperature for charging is 15-35 °C. The battery may not charge or the performance may degrade when charging in extreme low or high temperatures.
- The charge status lamp (→) will blink when there is a problem with charging.

- When charging the shaver for the first time or when it has not been in use for more than 6 months, the charge status lamp (→) may not glow. It will eventually glow if kept connected.

Shave

Using the shaver



1. Rotate the lock ring [E5] and press the power switch [E6].
2. Hold the shaver as illustrated above and shave.

Page 3

Tips for best shaving results

Start out shaving by applying gentle pressure to your face. Stretch your skin with your free hand and move the shaver back and forth in the direction of your beard. You may gently increase the amount of pressure as your skin becomes accustomed to this shaver. Applying excessive pressure does not provide a closer shave.

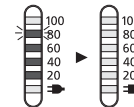
Using the trimmer

Press the trimmer lock button [E11] and slide the trimmer handle [E12] up. Place at a right angle to your skin and move downwards to trim your sideburns.



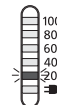
Reading lamps when using

While using



Approximate amount of battery charge is displayed as 20 - 100 (%) and then turns off after 5 seconds.

When the battery capacity is low



"20%" blinks when turning off the shaver.

- You can shave 1 to 2 times after "20%" appears. (This will differ depending on usage.)
- A full charge will supply enough power for approx. 21 shaves of 3 minutes each.

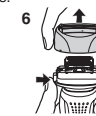
Clean

Cleaning the shaver

1. Disconnect the power cord from the shaver.
2. Apply some hand soap and some water to the outer foil.
3. Rotate the lock ring [E5] to unlock the power switch [E6].
4. Turn the shaver on.



5. Turn the shaver off after 10-20 seconds.
6. Remove the outer foil section [E9] and turn the shaver on.



7. Clean the shaver and the outer foil section [E9] with running water.

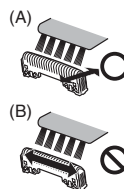


8. Wipe off any drops of water with a dry cloth.
9. Dry the outer foil section [E9] and the shaver completely.
10. Attach the outer foil section [E9] to the shaver.



Cleaning with the brush

Clean the inner blades [C] using the short brush by moving it in direction (A). Clean the system outer foil [E2], the shaver body and the trimmer [E10] using the long brush.



- Do not move the short brush in direction (B) as it will damage the inner blades [C] and affect their sharpness.
- Do not use the short brush to clean the outer foils.

Maintenance

Replacing the system outer foil and the inner blades

system outer foil	once every year
inner blades	once every two years

► Replacing the system outer foil

1. Press the foil frame release buttons [E4] and lift the outer foil section [E9] upwards.
2. Press the system outer foil release buttons [E3] and pull down the system outer foil [E2].



3. Insert the system outer foil [E2] until it clicks as illustrated.
 - Always attach the system outer foil [E2] in proper direction.
 - Always insert the system outer foil [E2] to the foil frame [E1] when attaching to the shaver.

► Replacing the inner blades

1. Press the foil frame release buttons [E4] and lift the outer foil section [E9] upwards.



2. Remove the inner blades [C] one at a time.
 - Do not touch the edges (metal parts) of the inner blades [C] to prevent injury to your hand.
3. Insert the inner blades [C] one at a time until they click.

Service

Replacement parts

Replacement parts are available at your dealer or Service Center.

Replacement parts for ES-RF41	System outer foil	WES9167
	Inner blades	WES9068

For environmental protection and recycling of materials

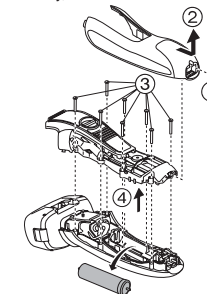
This shaver contains a Lithium-ion battery. Please make sure that the battery is disposed of at an officially assigned location, if there is one in your country.

Disposal of the built-in rechargeable battery

Remove the built-in rechargeable battery before disposing of the shaver. Please make sure that the battery is disposed of at an officially designated location if there is one. Do not dismantle or replace the battery so that you can use the shaver again. This could cause fire or an electric shock. Replace it at an authorized service center.

- Disconnect the power cord from the shaver when removing the battery.

- Perform steps ① to ④ and lift the battery, and then remove it.



Specifications

Power source	See the name plate on the adaptor. (Automatic voltage conversion)
Motor voltage	3.25 V DC
Charging time	Approx. 1 hour