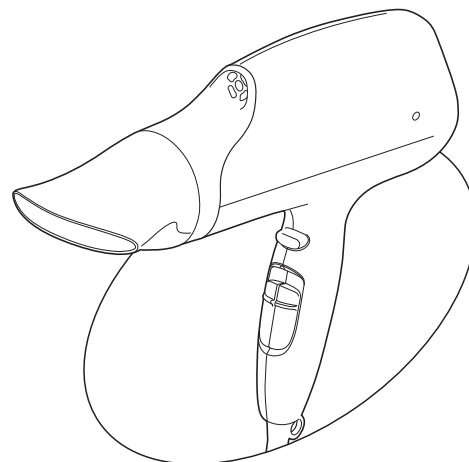


Panasonic®

Operating Instructions
(Household use) Hair Dryer

Model No. EH-NA67

English.....3



 nanoe™

Panasonic®

English

Operating Instructions
(Household use) Hair Dryer
Model No. EH-NA67

Contents

Safety precautions.....	4	About nanoe™	11
Parts identification	8	Maintenance of the hair dryer	11
How to use the hair dryer	9	Troubleshooting	14
The best recommended usage of the oscillating quick-dry nozzle	10	Specifications	14

Thank you for purchasing this Panasonic product.

Before operating this unit, please read these instructions completely and save them for future use.

nanoe™ is a trademark of Panasonic Holdings Corporation. A nanoe™ is a nano-sized ion particle coated with water particles.

Safety precautions

To reduce the risk of injury, loss of life, electric shock, fire, and damage to property, always observe the following safety precautions.

Explanation of symbols

The following symbols are used to classify and describe the level of hazard, injury, and property damage caused when the denotation is disregarded and improper use is performed.



WARNING

Denotes a potential hazard that could result in serious injury or death.



CAUTION

Denotes a hazard that could result in minor injury or property damage.

The following symbols are used to classify and describe the type of instructions to be observed.



This symbol is used to alert users to a specific operating procedure that must not be performed.



This symbol is used to alert users to a specific operating procedure that must be followed in order to operate the unit safely.

Some parts of the safety precaution illustrations differ from the actual product.

4



WARNING

► Plug and Cord



Do not use with the cord bundled.

- Doing so may cause fire or electric shock.



Do not damage the cord or plug.

• **Do not deface, modify, forcefully bend or pull the cord or plug. Also, do not place anything heavy on, twist or pinch the cord.**

- Doing so may cause electric shock, burn or fire due to a short circuit.



Do not use when the plug or cord is damaged or hot.

- Doing so may cause burn, electric shock, or fire due to a short circuit.



Never use the appliance if the plug fits loosely in a household outlet.

- Doing so may cause burn, electric shock, or fire due to a short circuit.



Do not connect or disconnect the plug to a household outlet with a wet hand.

- Doing so may cause electric shock or injury.

Do not wrap the cord tightly around the main body when storing.



- Doing so may cause the wire in the cord to break with the load, and may cause electric shock, burn or fire due to a short circuit.



Do not store or use the cord in a twisted state.

- Doing so may cause the wire in the cord to break with the load, leading to electric shock or fire due to a short circuit.



WARNING

Disconnect the plug by holding onto it instead of pulling on the cord.



- Failure to do so may cause the wire in the cord to break, and may cause burn, electric shock, or fire due to a short circuit.

Regularly clean the plug to prevent dust from accumulating.



- Failure to do so may cause fire due to insulation failure caused by humidity.
Disconnect the plug and wipe with a dry cloth.

Always turn off the power switch and disconnect the plug from the household outlet after use.



- Failure to do so may cause fire or burn.

Use the household outlet alone: do not use with an extension cord.



Fully insert the plug.

Always ensure the appliance is operated on an electric power source matched to the rated voltage indicated on the appliance.

- Failure to do so may cause fire or electric shock.

When the hair dryer is used in a bathroom, unplug it after use since the proximity of water presents a hazard even when the hair dryer is switched off.



- Failure to do so may cause an accident or injury.

For additional protection, the installation of a residual current device (RCD) having a rated residual operating current not exceeding 30 mA is advisable in the electrical circuit supplying the bathroom. Ask your installer for advice.



- Failure to do so may cause an accident or injury.



If the supply cord is damaged, it must be replaced by the manufacturer, its service agent, or similarly qualified persons in order to avoid a hazard.

- Failure to do so may cause an accident or injury.

► In case of an abnormality or malfunction

Immediately stop using and remove the plug if there is any abnormality or malfunction.

- Failure to do so may cause fire, electric shock, or injury.

<Abnormality or malfunction cases>



- Air is not emitted
- Unit stops sporadically
- Interior becomes red-hot and smoke is emitted
- The appliance is damaged or deformed, or strange noise is emitted.

- Immediately request inspection or repair at an authorized service center.

► Maintenance



If you see sparks around the air outlet while using the hot air setting, stop use and remove the lint on the air outlet and air inlet.

- Failure to do so may cause burn or fire.

► This appliance



Do not block or insert hair pins or other foreign objects into the air inlet, air outlet or nanoe™ outlet.

- Doing so may cause fire, electric shock, or burn.



WARNING



Do not leave the product with the power switch on.

- Doing so may cause fire.



Do not store the appliance in a bathroom or location with high humidity. Also, do not place in a location where water may spill (such as top of vanity).

- Doing so may cause electric shock or fire.



Do not keep within the reach of infants or young children.

Do not let them use the appliance.

- Doing so may cause burn, electric shock, or injury.



Do not use in proximity of flammable materials (such as alcohol, benzine, thinner, spray, hair care product, nail polish remover).

- Doing so may cause an explosion or fire.



Never modify, disassemble, or repair.

- Doing so may cause ignition or injury due to abnormal operation.

Contact an authorized service center for repair.



Do not use the appliance with a wet hand.

- Doing so may cause electric shock or fire due to a short circuit.



This appliance is not designed for commercial use, and is not intended for use without appropriate maintenance.

- Doing so may cause burn or fire due to a continuous load or overload.

Do not immerse the appliance in water.

Do not use this appliance near water.



Do not use this appliance near bathtubs, showers, basins or other vessels containing water.

- Doing so may cause electric shock or fire.



This symbol with prohibition sign in red on the appliance means "Do not use this appliance near water".



This appliance is not intended for use by persons (including children) with reduced physical, sensory or mental capabilities, or lack of experience and knowledge, unless they have been given supervision or instruction concerning use of the appliance by a person responsible for their safety. Children should be supervised to ensure that they do not play with the appliance.

- Failure to do so may cause an accident or injury.



CAUTION

► To protect your hair



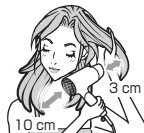
Do not use with the air inlet damaged.

- Your hair may get tangled in the air inlet, which could damage the hair.



Be sure to keep a distance of over 3 cm between the air outlet and your hair.

- Failure to do so may cause burns to the hair.



Be sure to keep your hair at least 10 cm away from the air inlet.

- Your hair may get tangled in the air inlet, which could damage the hair.



► Note the following precautions



Do not drop or subject to shock.

- Doing so may cause electric shock or ignition.



Only use for drying or styling human hair.

(Do not use on pets, or to dry clothing, shoes, etc.)

- Doing so may cause fire or burn.



Do not use on children under 6 years old.

- Doing so may cause burn.



Do not touch the air outlet, concentrator nozzle, oscillating quick-dry nozzle, and diffuser which will become very hot.

- Doing so may cause burn.



Never use the appliance with the filter removed.

- Your hair may get dangled in the air inlet, which could damage the hair.



Do not wash the filter in water.

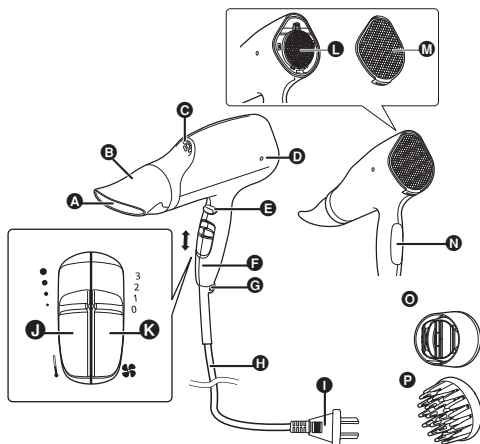
- Doing so may cause fire or electric shock.

► Notes

- This appliance is equipped with an automatic overheating protective device. If the appliance overheats, it will switch to cold air mode. Switch off the appliance and unplug it from the household outlet. Allow it to cool down for a few minutes before using it again. Check that no fluff, hair etc. is in the air inlets and outlets before switching it on again.
- You may notice a characteristic odor when using this appliance. This is caused by the ozone it generates and is not harmful to the human body.

Parts identification

English



- A** Air outlet
- B** Concentrator nozzle
- C** nanoe™ outlet
- D** nanoe™ lamp
- E** Cool-shot button
- F** Handle
- G** Ring for hanging
- H** Cord
- I** Power plug
- J** Temperature selector (|)
 - : Hot (Hot air)
 - : Warm (Warm air)
 - : Healthy (Mild air)
 - : Cool (Cool air)
- K** Power switch (|)
 - 3: Turbo (Very strong airflow)
 - 2: Dry (Strong airflow)
 - 1: Set (Gentle airflow)
 - 0: Off
- L** Air inlet grille
- M** Filter
 - Make sure to attach the filter to the air inlet when using the hair dryer.
- N** Panel
- O** Oscillating quick-dry nozzle
- P** Diffuser

► Concentrator nozzle

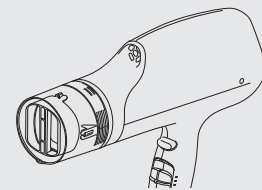
Focuses and concentrates airflow for precise drying.

► Oscillating quick-dry nozzle

Delivers strong and soft airflows for fast drying.

Automatically moves to prevent hot spots for more gentle drying.

Attach the oscillating quick-dry nozzle so this air outlet is vertical.



► Diffuser

For creating full-bodied hair with lots of volume and styling

How to use the hair dryer

Always check that the filter is securely attached before using.

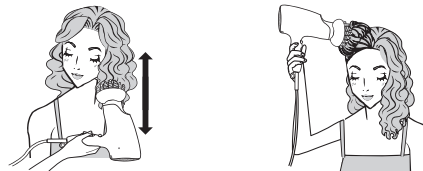
- 1 Select the temperature of the airflow with the temperature selector (Ⓜ).
- 2 Select the intensity of the airflow with the power switch (Ⓚ).

► Notes

- The air remains cool while the cool-shot button is held down.
- nanoe™ is produced when the power switch (Ⓚ) is set to position 1 to 3.
- nanoe™ is invisible to the naked eye.
- If you are worried about hair damage, set the switch to "1: Set (Gentle airflow)" before use.
- Drops of water may blow out of the nanoe™ outlet (Ⓢ) during use, but this is not a malfunction.
- A humming noise may come out of the nanoe™ outlet (Ⓢ), but this is the sound of nanoe™ being discharged and is not a malfunction.
- The effects of nanoe™ might not be felt by the following people. People with crimped hair, strong curly hair, very smooth hair, short hair, or who have had a hair straightening perm in the last three or four months.
- You may notice a characteristic odor when using this hair dryer. This is not harmful to the human body.
- Do not look into the air outlet while in use.

To define the curls and waves with a diffuser

1. Gently place the tip of your hair on the diffuser.
2. Lift your curls up and down from your scalp whilst they are drying.
3. Repeat all sections.
4. Finally, adjust the overall finished look with your hands.



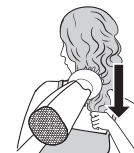
To increase hair volume with a diffuser

Attain volume by moving the diffuser in a circular motion over the scalp. Keep the diffuser held on specific areas of your head for a few seconds to attain volume as you wish. Repeat until your desired look is achieved.



To adjust hair flow with a diffuser

Comb the hair with a diffuser to dry the hair from the roots to the tips while pulling the ends of the hair.



The best recommended usage of the oscillating quick-dry nozzle

- The oscillating quick-dry nozzle will work only if you pull out the nozzle (see arrow). You need to hold the base of the nozzle in your hand and pull out the upper part until it has clicked.
- When using the oscillating quick-dry nozzle in automatic swing mode, make sure to set the wind speed to “3”.

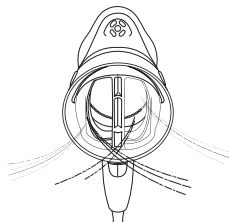
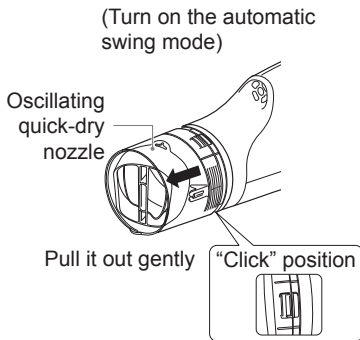
1. Please confirm that the power switch is set to the position “0” before using the oscillating quick-dry nozzle.

2. Hold both sides of the oscillating quick-dry nozzle with your hands, and pull it out gently with force until you hear a “click” sound, indicating that the automatic swing mode of the oscillating quick-dry nozzle has been turned on.

3. Choose the temperature of wind as required.

4. Set the power switch to “3”.

- If you want to dry your hair quickly, it is recommended to choose the mode “3” + “Hot” or “Warm”.



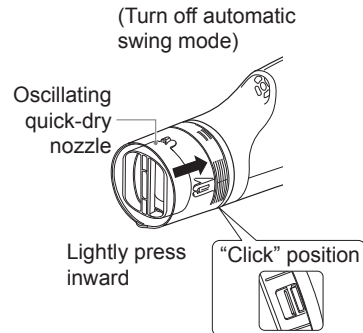
5. Dry your hair, then turn off the automatic swing mode for the oscillating quick-dry nozzle before tidying your hair.

- Make sure that the power switch is set to the position “0”.
- Hold both sides of the oscillating quick-dry nozzle with your hands, and slightly press it inward with force until you hear a “click” sound, indicating that the automatic swing mode of the oscillating quick-dry nozzle has been locked.

6. Set the wind speed to “1”, then set the temperature of the wind to “Cool”. Finally, set your hair according to your own particular preferences.

► Notes

- Oscillating quick-dry nozzle may not function properly at low power mode “1”.
- Illustrations are translucent here for easier understanding.



About nanoe™

What is nanoe™?

(nanoe™, generation method: high voltage discharge)
nanoe™ is generated by collecting the available moisture in the air, so depending on the usage environment, nanoe™ may not be generated. In environments of low temperature and low humidity, moisture in the air becomes difficult to collect. When this occurs, negative ions are generated.
nanoe™ are ions wrapped in water that are invisible to the human eye.

How nanoe™ works

Generally hair have properties which make it easy to become positively charged with electricity. These properties attract strongly negatively charged nanoe™ which penetrates the hair with moisture. Furthermore, they make the hair slightly acidic, tighten cuticles and keep your hair strong, elastic and healthy.

Panel effect

When nanoe™ continues to strike hair, hair becomes negatively charged. As a result, the nanoe™ and negatively charged hair repel each other, making it difficult for nanoe™ to reach hair.

With the nanoe™ Charge System, by just gripping the panel together with the handle, the negative charge accumulated on hair is released.

Because of this, nanoe™ continues to penetrate into hair, supplying moisture and thoroughly moistening down to the tips of hair.

Maintenance of the hair dryer

Always turn the power switch off and disconnect the plug from the household outlet. (Except when performing maintenance on the air outlet)

Maintaining the main body

Do this when dirty

To clean the hair dryer (when it is dirty), soak a cloth in the soapy water and squeeze it out firmly, then wipe with the cloth.

► Notes

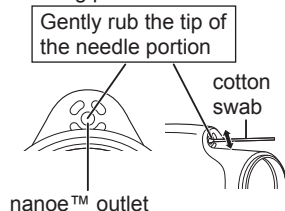
- Do not use substances such as alcohol, nail polish remover or detergent (hand soap). Doing so may result in malfunction or part cracks or discoloration.
- Do not leave the appliance with hairdressing products or cosmetics on it. Doing so will cause deterioration of the plastic, leading to discoloration and cracks.



Maintaining the nanoe™ outlet

- Use commercially available cotton swabs. (We recommend the thin cotton swabs made for use with babies.)
- This maintenance allows the hair dryer to sustain the generated level of nanoe™ over a long period.

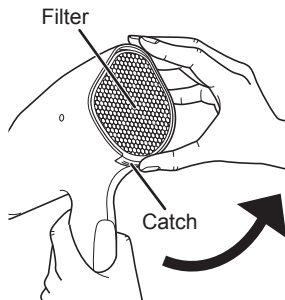
1. Dampen the end of the cotton swab with tap water.
2. A needle portion is located deep within the nanoe™ outlet. Using the swab, rub this portion gently about 5 times.



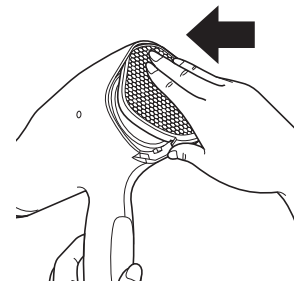
Maintaining the air inlet

Clean the air inlet once a month or over.

- When dust etc. has built up, detach the filter from the hair dryer and remove the dust etc. using a toothbrush or vacuum cleaner.
 - Use a commercially available toothbrush.
1. Pull on the catch on the bottom side of the filter to detach.

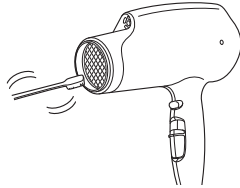


2. Remove any dust etc. adhered to the filter or air inlet grille.
 - Remove the dust etc. adhered to the outside of the filter using a vacuum cleaner. If this does not remove the dust, use the thick part of your fingers to push the dust etc. through the fine mesh on the internal side towards the metal mesh on the external side, and scrub away carefully with a toothbrush.
 - Using the toothbrush, carefully scrub away any dust etc. from the internal side of the filter.
 - Using a vacuum cleaner or toothbrush, carefully remove any dust etc. adhered to the air inlet.
 - Rubbing forcefully with your nails may tear the filter, so please use a toothbrush.
3. Attach the filter securely, starting with the upper side.
 - Keep pressing until you hear a “click” from both upper and lower catches.



Maintaining the air outlet

- The hair dryer should be plugged into the household outlet only in case of maintenance for the air outlet.
- Use a commercially available toothbrush.
- Switch the temperature selector to “Cool” and blow away the dust etc. as you scrub with the toothbrush.
- During maintenance, do not block the air inlet with your hands etc.
- Be careful when using the hair dryer for the first time after maintenance, since it may blow out dust etc.



Scrub to remove any dust, hair etc. blocking the mesh.

Troubleshooting

English

Problem	Possible cause	Action
It switches frequently to cold air while using in "Hot" mode, or sparks can be seen within the body. (These sparks are caused by the thermostat switch, the protective device, and this is not dangerous.)	▶ Lint has accumulated on the air inlet or air outlet. Hair or something is blocking the air inlet.	▶ Remove accumulated lint. Do not block the air inlet.
The hot air is abnormally hot.	▶	
The power plug is abnormally hot.	▶ The connection to the household outlet is loose.	▶ Use a household outlet that fits securely.
Sparks are generated inside the nanoe™ outlet.	▶ Abnormality caused by a dirty electrode (needle portion).	▶ Perform maintenance of the nanoe™ outlet.
The nanoe™ outlet emits a noise (crackling noise).	▶	▶

If the problems still cannot be solved, contact the store where you purchased the unit or a service centre authorised by Panasonic for repair.

Specifications

Product model	EH-NA67		
Power source	220 V~ 50-60 Hz	230 V~ 50-60 Hz	240 V~ 50-60 Hz
Power consumption	1 700 W	1 850 W	2 000 W
Accessories	Concentrator nozzle, Oscillating quick-dry nozzle, Diffuser		
Airborne Acoustical Noise	without nozzle: 78 (dB(A) re 1pW)		

This product is intended for household use only.

14

Panasonic Corporation
<https://www.panasonic.com>
© Panasonic Corporation 2022

® EN

Printed in Thailand
EH9210NA677651 Y0622-0