

Operating Instructions
(Household) Rechargeable Shaver
Model No. ES-LV6N

Contents

Safety precautions.....	2	FAQ	12
Intended use	6	Troubleshooting	12
Parts identification	6	Battery life	14
Preparation.....	7	Removing the built-in rechargeable battery	14
How to use	8	Specifications	14
Cleaning the shaver	10		
Replacing the system outer foil and the inner blades	11		



Thank you for purchasing this Panasonic product.

Before operating this unit, please read these instructions completely and save them for future use.

Safety precautions

To reduce the risk of injury, loss of life, electric shock, fire, and damage to property, always observe the following safety precautions.

Explanation of symbols

The following symbols are used to classify and describe the level of hazard, injury, and property damage caused when the denotation is disregarded and improper use is performed.



DANGER

Denotes a potential hazard that will result in serious injury or death.



WARNING

Denotes a potential hazard that could result in serious injury or death.



CAUTION

Denotes a hazard that could result in minor injury or property damage.

The following symbols are used to classify and describe the type of instructions to be observed.



This symbol is used to alert users to a specific operating procedure that must not be performed.



This symbol is used to alert users to a specific operating procedure that must be followed in order to operate the unit safely.



WARNING

► This product

This shaver has a built-in rechargeable battery. Do not throw into fire, apply heat, or charge, use, or leave in a high temperature environment.

- Doing so may cause overheating, ignition, or explosion.



Do not modify or repair.

- Doing so may cause fire, electric shock, or injury.

Contact an authorized service center for repair (battery change etc).



Never disassemble except when disposing of the product.

- Doing so may cause fire, electric shock, or injury.



This appliance is not intended for use by persons (including children) with reduced physical, sensory or mental capabilities, or lack of experience and knowledge, unless they have been given supervision or instruction concerning use of the appliance by a person responsible for their safety. Children should be supervised to ensure that they do not play with the appliance.

- Failure to do so may cause an accident or injury.



The supply cord cannot be replaced. If the cord is damaged, the AC adaptor should be scrapped.

- Failure to do so may cause an accident or injury.





WARNING

► In case of an abnormality or malfunction

Immediately stop using and remove the adaptor if there is an abnormality or malfunction.

- Failure to do so may cause fire, electric shock, or injury.

<Abnormality or malfunction cases>



• **The main unit, adaptor or cord is deformed or abnormally hot.**

• **The main unit, adaptor or cord smells of burning.**

• **There is an abnormal sound during use or charging of the main unit, adaptor or cord.**

- Immediately request inspection or repair at an authorized service center.

► Power supply



Do not connect or disconnect the adaptor to a household outlet with a wet hand.

- Doing so may cause electric shock or injury.

Do not immerse the AC adaptor in water or wash with water.

Do not place the AC adaptor over or near water filled sink or bathtub.



Never use the appliance if the AC adaptor is damaged or if the power plug fits loosely in a household outlet. Do not damage, modify, or forcibly bend, pull, or twist the cord. Also, do not place anything heavy on or pinch the cord.

- Doing so may cause electric shock or fire due to a short circuit.



Do not use in a way exceeding the rating of the household outlet or the wiring.

- Exceeding the rating by connecting too many plugs to one household outlet may cause fire due to overheating.



Do not use anything other than the supplied AC adaptor.

Also, do not charge any other product with the supplied AC adaptor.

- Doing so may cause burn or fire due to a short circuit.



Always ensure the appliance is operated on an electric power source matched to the rated voltage indicated on the AC adaptor.

Fully insert the adaptor.

- Failure to do so may cause fire or electric shock.



Disconnect the AC adaptor when cleaning the shaver with water.

- Failure to do so may cause electric shock or injury.



Regularly clean the power plug and the appliance plug to prevent dust from accumulating.

- Failure to do so may cause fire due to insulation failure caused by humidity.

► Preventing accidents



Do not place within reach of children or infants. Do not let them use it.

- Putting parts or accessories in the mouth may cause an accident or injury.



WARNING

If oil is consumed accidentally, do not induce vomiting, drink a large amount of water and contact a physician.



If oil comes into contact with eyes, wash immediately and thoroughly with running water and contact a physician.

- Failure to follow these instructions may result in physical problems.



If you experience skin irritation anywhere on the body, stop using immediately and contact a physician.

- Failure to follow these instructions may result in physical injury or injury to the skin.



CAUTION

► Protecting the skin

Do not use excessive pressure to apply the system outer foil to your lip or other part of your face.



Do not apply the system outer foil directly to blemishes or injured skin.

Do not touch the blade section (metallic section) of the inner blade.

- Doing so may cause injury to skin or hand.

Do not forcefully press the system outer foil. Also, do not touch the system outer foil with fingers or nails when in use.



Do not use this product for hair on head or any other part of the body.

- Doing so may cause injury to skin or reduce the life of the system outer foil.



Check the system outer foil for cracks or deformations before use.

- Failure to do so may cause injury to the skin.



Be sure to place the protective cap on the shaver when carrying around or storing.

- Failure to do so may cause injury to skin or reduce the life of the system outer foil.

► Note the following precautions



Do not wrap the cord around the adaptor when storing.

- Doing so may cause the wire in the cord to break with the load, and may cause fire due to a short circuit.



Do not allow pins or trash to adhere to the power plug or the appliance plug.

- Doing so may cause electric shock or fire due to a short circuit.



Do not disconnect the adaptor or the appliance plug by holding onto the cord.

- Doing so may cause electric shock or injury.



Do not share your shaver with your family or other people.


- Doing so may result in infection or inflammation.



Do not drop or hit against other objects.

- Doing so may cause injury.

CAUTION

 **Disconnect the adaptor from the household outlet when not charging.**

- Failure to do so may cause electric shock or fire due to electrical leakage resulting from insulation deterioration.
-

Disposing of the rechargeable battery

DANGER

The rechargeable battery is exclusively for use with this appliance. Do not use the battery with other products.

- **Do not throw into fire or apply heat.**
 - **Do not hit, disassemble, modify, or puncture with a nail.**
 - **Do not let the positive and negative terminals of the battery get in contact with each other through metallic objects.**
 - **Do not keep the battery together with metallic jewelry such as hairpins.**
 - **Do not charge, use, or leave the battery where it will be exposed to high temperatures, such as under direct sunlight or near other sources of heat.**
 - **Never peel off the tube.**
 - Doing so may cause overheating, ignition, or explosion.
-

WARNING

After removing the rechargeable battery, do not keep it within reach of children and infants.

- The battery will harm the body if accidentally swallowed. If this happens, consult a physician immediately.
-

If the battery fluid leaks out, take the following procedures. Do not touch the battery with your bare hands.

- The battery fluid may cause blindness if it comes in contact with your eyes.
 - Do not rub your eyes. Wash immediately with clean water and consult a physician.
 - The battery fluid may cause inflammation or injury if it comes in contact with the skin or clothes. Wash it off thoroughly with clean water and consult a physician.
-

Intended use

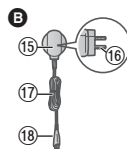
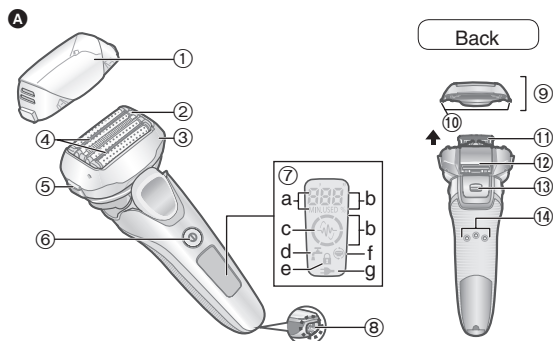
- This WET/DRY shaver can be used for wet shaving using shaving lather or for dry shaving. You can use this watertight shaver in the shower and clean with water. The following symbol means suitable for use in a bath or shower.



► Notes

- Treat yourself to wet lather shaves for at least three weeks and notice the difference. Your Panasonic WET/DRY shaver requires a little time to get used to because your skin and beard need about a month to adjust to any new shaving method.
- Do not bring the system outer foil into contact with hard object. Doing so may damage the blades as they are very thin and deform easily.
- Do not dry the main unit with a dryer or a fan heater. Doing so may cause malfunction or deformation of the parts.
- Do not leave the shaver exposed to direct sunlight with the foil frame detached. Doing so may deteriorate the waterproof rubber and degrade waterproof function, which may cause to malfunction.
- Store the shaver in a place with low humidity after use. Failure to do so may cause malfunction due to condensation or rust.
- Keep both the inner blades inserted. If only one of the inner blades is inserted, the shaver may be damaged.
- If you clean the shaver with water, do not use salt water or hot water. Do not soak the shaver in water for a long period of time.

Parts identification



A Main body

- ① Protective cap
- ② System outer foil
- ③ Foil frame
- ④ Smooth roller
 - It helps to slide on the skin better.
- ⑤ Foil frame release buttons
- ⑥ Power switch

⑦ Lamp display

- a. Used time lamp
- b. Battery capacity lamp
- c. Shaving sensor lamp
- d. Clean lamp
- e. Switch lock lamp
- f. Foil/blade check lamp
- g. Charge status lamp

- ⑧ Appliance socket
- ⑨ Outer foil section
- ⑩ System outer foil release buttons
- ⑪ Inner blades
- ⑫ Trimmer
- ⑬ Trimmer handle
- ⑭ Main body rear terminals

Ⓑ AC adaptor (RE7-87)

- ⑮ Adaptor
- ⑯ Power plug
- ⑰ Cord
- ⑱ Appliance plug

Accessories

- Ⓒ Travel case
- Ⓓ Cleaning brush
- Ⓔ Oil

Preparation

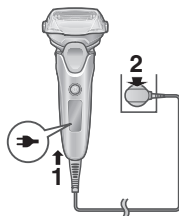
Charging the shaver

- Turn the shaver off.
- Wipe off any water droplets on the appliance socket.

1 Insert the appliance plug into the shaver.

2 Plug the adaptor into a household outlet.

- Check that the charge status lamp (➡) is glowing.
- Charging is completed after approx. 1 hour.



3 Disconnect the adaptor after charging is completed.

Note

You cannot operate the shaver while charging.

While charging



➡ glows.
The number of the battery capacity lamp will increase as charging progresses.

After charging is completed



The battery capacity lamp and ➡ will light up and then turn off after 5 seconds.


Notes

- When charging the shaver for the first time or when it has not been in use for more than 6 months, the charging time may change or the charge status lamp (➡) may not glow for a few minutes. It will eventually glow if kept connected.
- Recommended ambient temperature for charging is 10 – 35 °C. It may take longer to charge, or the charge status lamp (➡) will blink quickly and the battery may fail to charge properly in extremely high or low temperatures.
- The shaver can be used for approximately 2 weeks with a full charge.
(Based on one 3-minute dry-shave use per day)
The number of usable days varies depending on the following conditions.
 - Beard thickness
 - Pressure applied to the skin
 - Ambient temperature
 - Usage frequency of the sonic vibration cleaning mode
- If there is noise from radio or other source while using the shaver, move to a different location to use the shaver.

How to use

Shaving beard

1 Press and shave.

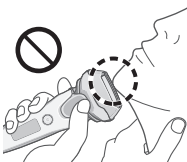
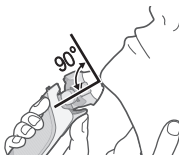
- The “shaving sensor”, which automatically adjusts the power depending on the beard thickness, will operate. It will shave with high power on areas where the beard is heavy, and reduce the power on areas where the beard is thin, to reduce burden on the skin.
- The power cannot be turned on when the switch lock lamp () blinks, as the power switch is locked. Press the power switch for more than 2 seconds to unlock. (See page 9.)



Tips for better shaving

Apply the whole system outer foil perpendicularly against the skin and shave by slowly gliding the shaver over the face against the grain of the beard.

- The beard under the chin and around the throat can be shaved better by stretching the skin so the beard will stand.
- To prevent damaging the system outer foil, do not shave with only a part of the system outer foil.




2 Press when finished.

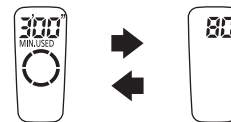
While using



The used time and remaining battery capacity are shown and then turn off after 7 seconds.

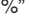
- The shown time returns to [0'00"] after 10 minutes.
- The shaving sensor lamp () blinks.

After use



The used time and remaining battery capacity blink alternately and then turn off after 8 seconds.

When the battery capacity is low

- “10%” appears and “” blinks.
- You can shave 1 to 2 times after “10%” appears. (This will differ depending on usage.)







Notes

- The appliance may not operate in an ambient temperature approximately 5 °C or lower.
- The shaving sensor may not respond depending on the type and quantity of the shaving gel. This is not abnormal.
- Depending on the beard thickness or the amount of beard trimmings in the shaver head, the shaving sensor may not react and the driving sound may not change. This is not abnormal.
- To prevent erroneous operation, place your fingers on the finger rest while using the shaver.
- The sonic vibration cleaning mode is activated when the power switch is pressed for more than 2 seconds while the shaver is not operating (the switch lock is unlocked). (See page 10.) You cannot shave in this mode.




Locking/unlocking the power switch

Locking the power switch

1. Press  once and then release.
 - The shaver starts operating.
2. Press  for more than 2 seconds.
 - The switch lock lamp () will light up for 5 seconds and turns off.
 - The shaver will stop operating.
3. Release .



Unlocking the power switch

1. Press  for more than 2 seconds.
 - The switch lock lamp () will turn off.
2. Once the shaver starts operating, release .



► Switching the shaver head

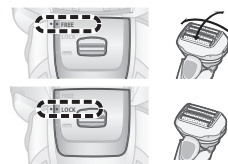
You can change the pivot action.

FREE


The shaver head is moved to prevent missed spot.

LOCK

You can lock the shaver head.



► Using the trimmer

1. Slide the trimmer handle up to the “mm” position so that the trimmer stands upright.
2. Press  and use.



Press and hold the top knob (a) and slide the trimmer handle down to lower the trimmer.



Tips for better usage

Apply the trimmer edge perpendicular to skin and move downward.

Trimming sideburns



Pre-shave of long beards



Cleaning the shaver

We recommend cleaning the shaver after each use.

Cleaning with water

- Turn the shaver off and disconnect the AC adaptor.

1 Apply some hand soap and some water to the system outer foil.



2 Press for more than 2 seconds to activate the sonic vibration cleaning mode.

- Splashing of foam is suppressed.
- The battery capacity lamps blink in order.
- After about 20 seconds, it will be automatically turned off, or you can turn it off by pressing the power switch.



3 Remove the outer foil section and clean with running water.

- See page 11 for attaching and removing the outer foil section.
- Splashing is reduced by rinsing the shaver in sonic vibration cleaning mode.
- After rinsing with water, shake the shaver up and down for a few times to remove excess moisture and then wipe off any drops of water with a dry cloth.



4 Dry the outer foil section, the shaver, and the trimmer completely.

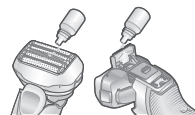
- Dry in a shade and apply oil.



5 Lubricate the shaver.

It will keep the movement of the blade smooth and maintain a comfort shave.

1. Apply one drop of oil to each of the system outer foils.
2. Raise the trimmer and apply a drop of oil.
3. Switch the shaver on, and run it for approximately five seconds.
4. Switch off the shaver, and wipe off any excess oil from the system outer foil with a soft cloth.



Notes

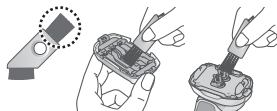
- Be careful not to hit the main body on the sink or any other object while draining the water. Failure to do so may cause malfunction.
- Do not wipe with thinners, benzene, alcohol etc. Doing so may cause malfunction, or cracking or discoloration of the parts.
- Wipe with diluted soapy water.
- Do not use any kitchen or bathroom detergents other than hand soap. Doing so may cause malfunction.

Cleaning with the brush

Remove the outer foil section and the inner blades.
(See page 11.)

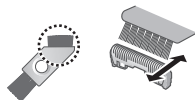
► Cleaning with the long brush

Clean the outer foil section, system outer foil, the shaver body and the trimmer using the long brush.



► Cleaning with the short brush

- Clean the inner blades using the short brush by moving it in direction as illustrated.
- Do not move the short brush perpendicularly against the blades as it will damage the inner blades and affect their sharpness.



Replacing the system outer foil and the inner blades

⚡ appears on the lamp display once a year. (Based on one 3-minute shave use per day)

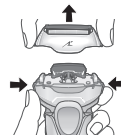
We recommend checking the system outer foil and the inner blades when it appears.

Press the power switch for more than 30 seconds to turn off ⚡. Even if ⚡ is not turned off right after the replacement, it will automatically turn off within approximately 7 uses.

system outer foil	once every year
inner blades	once every two years

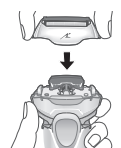
► Removing the outer foil section

Press the foil frame release buttons and lift the outer foil section upwards.



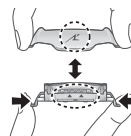
► Attaching the outer foil section

After turning the foil frame mark (↖) to the front, securely attach the outer foil section to the shaver until it clicks.



► Replacing the system outer foil

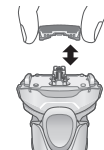
1. Press the system outer foil release buttons and pull down the system outer foil.
 2. Align the foil frame mark (↖) and the system outer foil mark (△) and securely attach together until it clicks.
- Do not press the system outer foil release buttons with excessive force.



Doing so may bend the system outer foil, preventing complete attachment to the foil frame.

► Replacing the inner blades

1. Remove the inner blades one at a time.
2. Insert the inner blades one at a time.



Note

Do not throw away the foil frame.

► Replacement parts

Replacement parts are available at your dealer or Service Center.

Replacement parts for ES-LV6N	System outer foil and inner blades	WES9034
	System outer foil	WES9175
	Inner blades	WES9170


FAQ

Question	Answer
Will the battery deteriorate if not used for an extended period of time?	► The battery will deteriorate if not used for over 6 months, so make sure to perform a full charge at least once every 6 months.
Can I charge the shaver after every use?	► The battery used is a lithium-ion, so charging after every use will have no effect on battery life.
Why is the adaptor disconnected after use?	► Charging the battery for more than 1 hour will not affect battery performance, but disconnect the adaptor for safety and to save energy.
What is the constituent of the dedicated oil?	► Constituent of the oil is liquid paraffin.

Troubleshooting

Perform the following actions.

If the problems still cannot be solved, contact the store where you purchased the unit or a service center authorized by Panasonic for repair.

Problem	Action
The power switch does not turn ON.	► Unlock the switch lock. (See page 9.)
The clean lamp () glows. (It turns off in about 1 minute.)	► Please clean the blades with the sonic vibration cleaning mode.
The shaving sensor does not respond.	► Depending on the beard thickness or the amount of beard trimmings in the shaver head, the shaving sensor may not react and the driving sound may not change. This is not abnormal.
	► The shaving sensor may not respond depending on the type and quantity of the shaving gel. This is not abnormal.
	► The shaving sensor may not respond when the remaining battery capacity is low. If this happens, recharge the shaver.
	► Apply oil. The shaving sensor may not respond when there is not enough oil on the blades.

Problem	Action
The shaving sensor responds even though the shaver is not in contact with the skin.	<p>Clean the beard trimmings from the shaver.</p> <p>► When the shaver is extremely dirty, remove the foil frame and wash with water. (See page 10.)</p> <p>Replace the system outer foil and/or inner blades.</p> <p>Expected life of system outer foil and inner blades:</p> <p>► System outer foil: Approximately 1 year</p> <p>Inner blades: Approximately 2 years</p>
Operating time is short even after charging.	<p>► Apply oil. (See page 10.)</p> <p>► When the number of operations per charge starts to decrease, the battery is nearing the end of its life.</p>
Shaver does not operate even after charging.	<p>► The appliance may not operate in an ambient temperature approximately 5 °C or lower.</p> <p>The battery has reached the end of its life. In this case, the shaver</p> <p>► will not operate when the power is turned on with the AC adaptor connected.</p>
The driving sound changes while shaving.	<p>The shaving sensor is operating.</p> <p>► The sound changes depending on the beard thickness.</p>

Problem	Action
Makes a loud sound.	<p>Apply oil.</p> <p>► The blades will not move smoothly when there is no oil on the blades, requiring more power.</p> <p>The shaver makes a high-pitched sound due to the linear motor drive. This does not indicate a problem.</p> <p>► Confirm that the blades are properly attached.</p> <p>► Clean the system outer foil with the brush.</p>
The odor is getting stronger.	<p>► This can be improved by cleaning every time after shaving.</p>
Shavings fly out in all directions.	<p>This can be improved by cleaning every time after shaving.</p> <p>► Clean the inner blades with the brush when shavings are adhering to the inner blades.</p>
System outer foil gets hot.	<p>► Apply oil.</p> <p>► Replace the system outer foil if it is damaged or deformed. (See page 11.)</p>

Problem	Action
You do not get as close a shave as before.	► This can be improved by cleaning every time after shaving.
	Replace the system outer foil and/or inner blades. Expected life of system outer foil and inner blades:
	System outer foil: Approximately 1 year Inner blades: Approximately 2 years
	► Apply oil.

Battery life

The life of the battery is 3 years. The battery in this shaver is not intended to be replaced by consumers. Have the battery replaced by an authorized service center.

Removing the built-in rechargeable battery

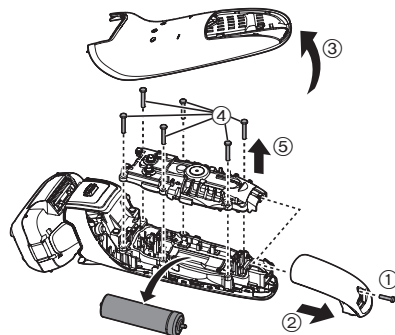
Remove the built-in rechargeable battery before disposing of the shaver.

Please make sure that the battery is disposed of at an officially designated location if there is one.

This figure must only be used when disposing of the shaver, and must not be used to repair it. If you dismantle the shaver yourself, it will no longer be waterproof, which may cause it to malfunction.

- Remove the shaver from the AC adaptor.
- Press the power switch to turn on the power and then keep the power on until the battery is completely discharged.

- Perform steps ① to ⑤ and lift the battery, and then remove it.
- Take care not to short circuit the positive and negative terminals of the removed battery, and insulate the terminals by applying tape to them.



For environmental protection and recycling of materials

This shaver contains a Lithium-ion battery.

Please make sure that the battery is disposed of at an officially assigned location, if there is one in your country.

Specifications

Power source	See the name plate on the AC adaptor. (Automatic voltage conversion)
Motor voltage	3.6 V---
Charging time	Approx. 1 hour

This product is intended for household use only.

This image shows a blank sheet of white paper with horizontal ruling lines. The lines are evenly spaced and run across the width of the page. There are no margins, text, or other markings on the paper.

Panasonic Corporation
<http://www.panasonic.com>
© Panasonic Corporation 2015