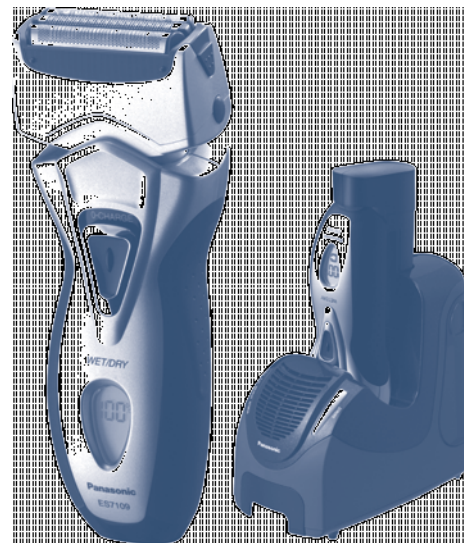


Ref.No.IM-B083-01-A

Panasonic®

Operating Instructions
Rechargeable Shaver

Model No. ES7109



Before operating this unit, please read these instructions completely.

Important

► Before use

This WET/DRY shaver can be used for wet shaving with shaving lather or for dry shaving. You can use this watertight shaver in the shower and clean it in water. The following is the symbol of Wet shaver. The symbol means that the hand-held part may be used in a bath or shower.



Treat yourself to wet lather shaves for at least three weeks and notice the difference. Your Panasonic WET/DRY shaver requires a little time to get used to because your skin and beard need about a month to adjust to any new shaving method.

► Using the shaver

Caution - The outer foil is very thin and can be damaged if not used correctly. Check that the foil is not damaged before using the shaver. Do not use the shaver if the foil etc. is damaged as you will cut your skin.

► Charging the shaver

Do not use any power cord, AC adaptor or recharger other than one specifically designed for this model. Plug in the adaptor into a household outlet where there is no moisture and handle it with dry hands. The shaver and the recharger may become warm during use and charging. However, this is not a malfunction. Do not charge the shaver where it will be exposed to direct sunlight or other heat sources. Hold the adaptor when disconnecting it from the household outlet. If you tug on the power cord, you may damage it. The supply cord cannot be replaced. If the cord is damaged, the appliance should be scrapped.

► Cleaning the shaver

Warning - Disconnect the power cord from the shaver before

cleaning it to prevent electric shock.

Keep both the inner blades inserted. If only one of the inner blades is inserted, the shaver may be damaged. If you clean the shaver with water, do not use salt water or hot water. Do not soak the shaver in water for a long period of time. Wipe it with a cloth dampened with soapy water. Do not use thinner, benzine or alcohol.

► Storing the shaver

Disconnect the power cord when storing the shaver. Do not bend the power cord or wrap it around the shaver. This appliance is not intended for use by persons (including children) with reduced physical, sensory or mental capabilities, or lack of experience and knowledge, unless they have been given supervision or instruction concerning use of the appliance by a person responsible for their safety. Children should be supervised to ensure that they do not play with the appliance. Keep these operating instructions in a safe place.

► Self-cleaning recharger

Do not clean the adaptor or the self-cleaning recharger in water as it will damage them or cause an electric shock. Do not remove the shaver from the self-cleaning recharger while using a course that includes the "Dry" function. A heater is used so the area around the blades becomes extremely hot and you may burn yourself. Place the self-cleaning recharger on a level and stable surface. Otherwise the cleaning liquid may spill and discolor leather products or other surfaces. Wipe it immediately. The self-cleaning recharger cleans the inner blades and the system outer foil. Brush or wash with water to remove beard trimmings in other areas.

SPECIFICATIONS

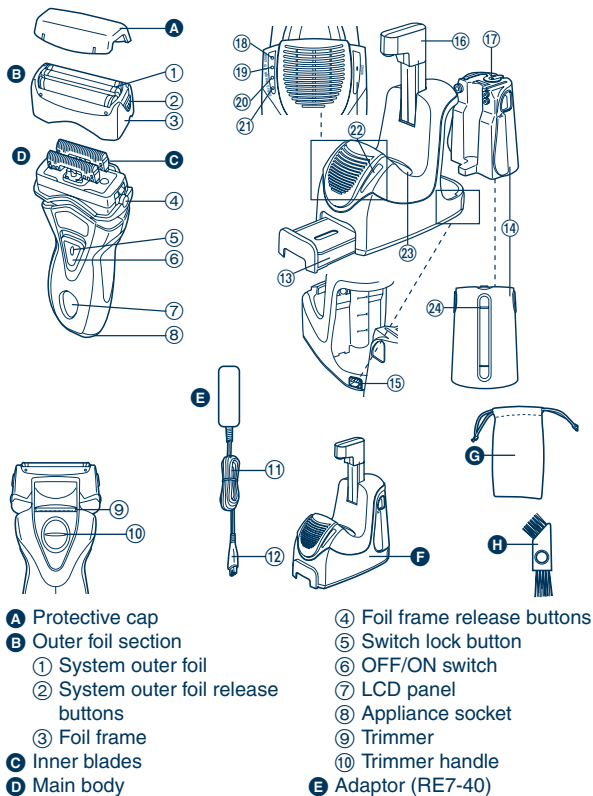
Power source: See the name plate on the product.
(Automatic voltage conversion)

Motor voltage: 2.4 V DC

Charging time: 1 hour

This product is intended for household use only.


Parts identification



- ⑪ Power cord
- ⑫ Appliance plug
- F** Self-cleaning recharger (Referred to as the "Recharger".)
- ⑬ Detergent cartridge
- ⑭ Water tank
- ⑮ Socket
- ⑯ Arm
- ⑰ Water tank cap
- ⑱ Clean lamp
- ⑲ Dry lamp
- ⑳ Charge lamp
- ㉑ Status lamp
- ㉒ Select button
- ㉓ Cleaning tray
- ㉔ Water level
- G** Travel pouch
- H** Cleaning brush

Operating environment for the self-cleaning recharger

| | |
|------------------------|---------------|
| Operating temperature: | 0-40 °C |
| Operating humidity: | Less than 95% |

- If you use the self-cleaning recharger in temperatures outside the above range, the following problems may occur.
 - The time it takes to charge the shaver increases.
 - The recharger stops functioning.
 - The lifespan of the rechargeable battery shortens. (Only when you use the recharger in lower temperatures.) In this case, the indicators on the LCD panel will blink twice every second.
- If the plug symbol  does not glow initially when the shaver is plugged in, wait for a short while until it does.
- Depending on the environment, the shaver may not dry even if you select a course that includes the "Dry" function. In this case, wipe off any drops of water with a dry cloth.

Charging with the self-cleaning recharger

Thoroughly wipe off any drops of water on or around the recharger so that it is dry before charging it.



- 1 Attach the detergent cartridge and the water tank to the self-cleaning recharger.

Page 6


- 2 Insert the appliance plug.
- 3 Plug in the adaptor.

- 4 Pull up the arm until it clicks.

- 5 Remove the protective cap and then attach the shaver.

- Turn the shaver off before attaching.
- Check that the outer foil is not deformed or damaged when you are attaching the shaver.

- 6 Push down the arm until it clicks.

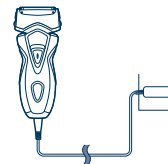
-  glows and charging starts.
 - Charging is completed when the indicators on the LCD panel blinks.
- (Max. 1 hour later)

- You can keep the shaver attached to the recharger, or connected to the adaptor, when not using it to maintain full battery capacity. You cannot overcharge the shaver.

► Charging without the self-cleaning recharger

You can also charge without the recharger.

1. Insert the appliance plug into the shaver.
2. Plug in the adaptor into a household outlet.



About the LCD panel

The LCD panel shows the remaining battery capacity from 0% to 100%, in 20% increments.

While charging



 glows.

After charging is completed



The indicators blink once every second.

10 minutes after charging is completed



The indicators blink once every 2 seconds.

When the battery capacity is low



• You can shave 1 to 2 times after “0%” appears. (This will differ depending on usage.)

“0%” appears and  blinks.

• A full charge will supply enough power for approx. 14 shaves of 3 minutes each.

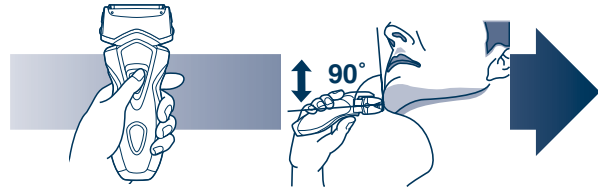
► Using the trimmer

Slide the trimmer handle up. Place at a right angle to your skin and move downwards to trim your sideburns.



Shave

Using the shaver



1 Depress the switch lock button and slide the OFF/ON switch upwards.

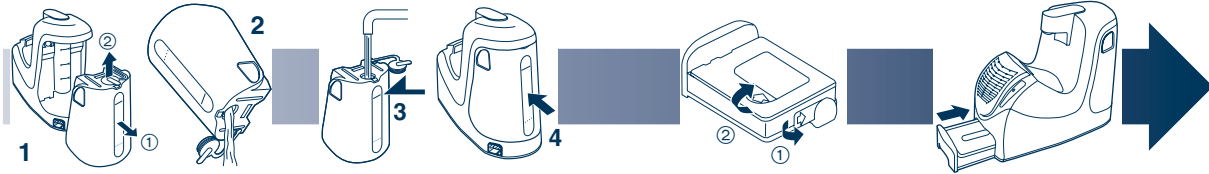
2 Hold the shaver as illustrated above and shave.

• Start out shaving by applying gentle pressure to your face. Stretch your skin with your free hand and move the shaver back and forth in the direction of your beard. You may gently increase the amount of pressure as your skin becomes accustomed to this shaver. Applying excessive pressure does not provide a closer shave.

Cleaning with the self-cleaning recharger

► Preparing the self-cleaning recharger

Remove the shaver and the appliance plug from the self-cleaning recharger.



1 Remove the water tank and then open the water tank cap.

2 Wash away the old cleaning liquid and then rinse the water tank.

3 Pour tap water into the water tank.

- Do not let the water rise above the maximum water line. This may cause the cleaning liquid to spill.

4 Securely close the water tank cap and then attach the tank.

5 Peel off the seals from the new detergent cartridge. (2 seals)

- Hold the detergent cartridge horizontally. (The detergent may spill if the detergent cartridge is tilted too much.)

6 Attach the detergent cartridge.

- Replace the detergent cartridge when the status lamp is illuminated. Use the below chart as a guide.

| Shaving | Cleaning | Reusability |
|------------|---------------|---------------------|
| 1 time/day | 1 time/day | approx. 30-40 times |
| | 1 time/3 days | approx. 10-15 times |
| | 1 time/week | approx. 4-7 times |

The expiration date of the cleaning liquid is 6 months after it is opened. If you do not use the cleaning liquid for more than 6 months, throw

away the detergent cartridge and the cleaning liquid.

- Only use self-cleaning recharger detergent for Panasonic shavers.
- Always change the detergent cartridge and the cleaning liquid in the water tank at the same time. Adding water, or changing just the detergent cartridge or the water, will result in deteriorated cleaning functions.
- If you operate the self-cleaning recharger, the concentrated detergent in the detergent cartridge dilutes and the water inside the tank will become a cleaning liquid.

► Cleaning the shaver



1 Insert the appliance plug.

2 Plug in the adaptor.

- Remove any soap or water on the shaver if it has been washed with hand soap or any other detergent.

3 Pull up the arm.

4 Remove the protective cap and then attach the shaver.

- Turn the shaver off before attaching.
- Check that the outer foil is not deformed or damaged when you are attaching the shaver.

5 Push down the arm.

6 Press [select] to select the course.

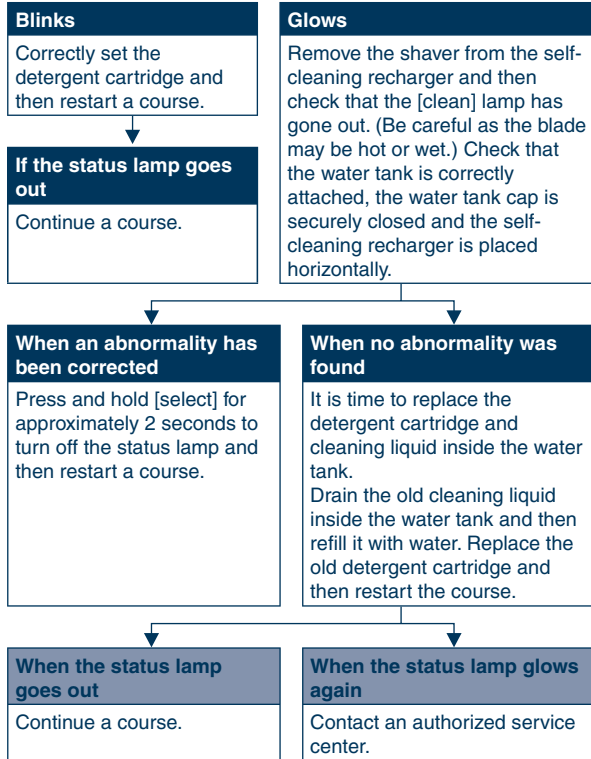
- Each time you press [select], the course changes from “Clean/Dry/Charge” → “Clean/Dry” → “Dry/Charge” → “Dry” → “Charge”.
- The courses start approximately 6 seconds after they are selected.
- The course will be aborted if the power is cut off. In this case, perform the course again from the beginning.
- Do not detach the detergent cartridge or the water tank as the cleaning liquid may spill causing a malfunction.

| Course | Course selection indications | | | | On shaver ▶ | Course completion summary | | | | | |
|-------------------------------|------------------------------|-----|--------|--------------------------------------|-------------------------|---------------------------|--------------|-----|--------|----------------|--------------------------|
| | On recharger | | | Changeable course halfway through | | On shaver ▶ | On recharger | | | On shaver ▶ | Time required (guide) |
| | clean | dry | charge | | | | clean | dry | charge | | |
| 1 Charge | ○ | ○ | ●* | 2345 | Glows | ▶ | ○ | ○ | ○ | Blinks | 1 hour |
| 2 Clean/Dry/ Charge | ● | ● | ● | 3 | Glows while charging | ▶ | ☀ | ☀ | ☀ | Blinks | 4 h 30 min |
| 3 Clean/Dry | ● | ● | ○ | 2 | – | ▶ | ☀ | ☀ | ○ | – | 3 hours |
| 4 Dry/Charge | ○ | ● | ● | 235 | Glows while charging | ▶ | ○ | ☀ | ☀ | Blinks | 4 h 20 min |
| 5 Dry | ○ | ● | ○ | 234 | – | ▶ | ○ | ☀ | ○ | – | 2 h 50 min |

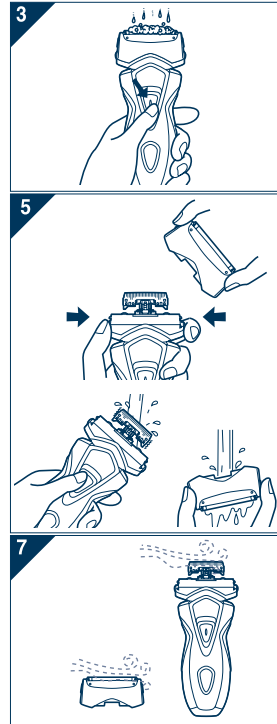
*The lamp goes out in 6 seconds.

▶▶▶▶ Cleaning with the self-cleaning recharger (continued)

▶ Follow the steps outlined below if the status lamp blinks or glows during the “Clean/Dry/Charge” course or the “Clean/Dry” course.



Cleaning the shaver without the self-cleaning recharger

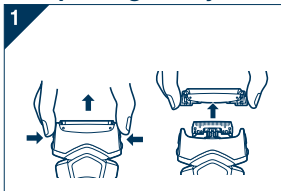


1. Disconnect the power cord from the shaver.
2. Apply some hand soap to the outer foil.
3. Turn the shaver on and then pour some water over the outer foil.
4. Turn the shaver off after 10-20 seconds.
5. Remove the outer foil section and clean it with running water.
6. Wipe off any drops of water with a dry cloth.
7. Dry the outer foil section and the shaver completely.
8. Attach the outer foil section to the shaver.

Replacing the system outer foil and the inner blades

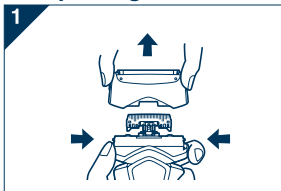
| | |
|-------------------|----------------------|
| system outer foil | once every year |
| inner blade | once every two years |

► Replacing the system outer foil

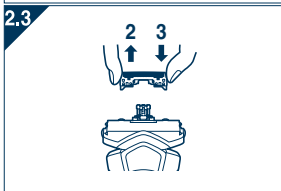


1. Press the system outer foil release buttons and lift the system outer foil upwards as illustrated.
2. Insert the system outer foil by pushing it downwards until it clicks.

► Replacing the inner blades

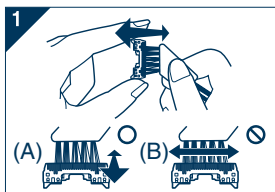


1. Press the foil frame release buttons and lift the outer foil section upwards as illustrated.
2. Remove the inner blades one at a time as illustrated.
 - Do not touch the edges (metal parts) of the inner blades to prevent injury to your hand.



3. Insert the inner blades one at a time until they click as illustrated.

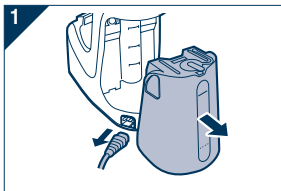
Cleaning with the brush



1. Clean the inner blades using the short brush by moving it in direction (A). Clean the system outer foil, the shaver body and the trimmer using the long brush.
 - Do not move the short brush in direction (B) as it will damage the inner blades and affect their sharpness.
 - Do not use the short brush to clean the outer foils.

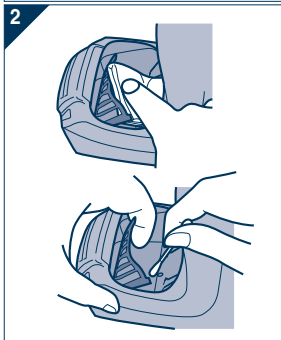
Cleaning the self-cleaning recharger

Beard trimmings may become attached to the cleaning tray of the self-cleaning recharger. Follow the steps below to remove them. We recommend doing this each time you change the detergent cartridge.



1. Be sure to remove the water tank and the appliance plug from the self-cleaning recharger.

- Be careful not to spill the cleaning liquid.



2. Gently wipe off any beard trimmings attached to the inside of the cleaning tray with a cloth or tissue paper dampened with water.

- Clean the corners and uneven parts of the cleaning tray with a cotton swab dampened with water.

- Do not pull hard on the rubber blade protector at the bottom of the cleaning tray. The rubber may come off if you pull hard on it. It is only necessary to pull it up slightly.
- Warning - Do not wash or apply water to the adaptor or self-cleaning recharger. Failure to observe this may cause electric shock or result in short circuits.

When the water does not drain from the cleaning tray



Beard trimmings may clog the drain at the bottom of the cleaning tray.

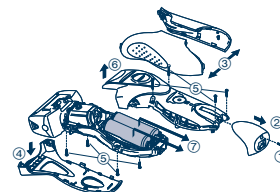
In this case, you cannot clean or dry the shaver.

Push the beard trimmings down through the drain with a tooth pick etc.

Removing the built-in rechargeable batteries

Remove the built-in rechargeable batteries before disposing of the shaver. Please make sure that the batteries are disposed of at an officially designated location if there is one. Do not dismantle or replace the batteries so that you can use the shaver again. This could cause fire or an electric shock. Replace them at an authorized service center.

- Disconnect the power cord from the shaver when removing the batteries.
- Perform steps ① to ⑦ and lift the batteries, and then remove them.



For environmental protection and recycling of materials

This shaver contains Nickel-Metal Hydride batteries.

Please make sure that the batteries are disposed of at an officially assigned location, if there is one in your country.

Panasonic Electric Works Wanbao (Guangzhou) Co., Ltd.

Wanbao Base Shiguang Road, Panyu District, Guangzhou, Guangdong, 511495 CHINA