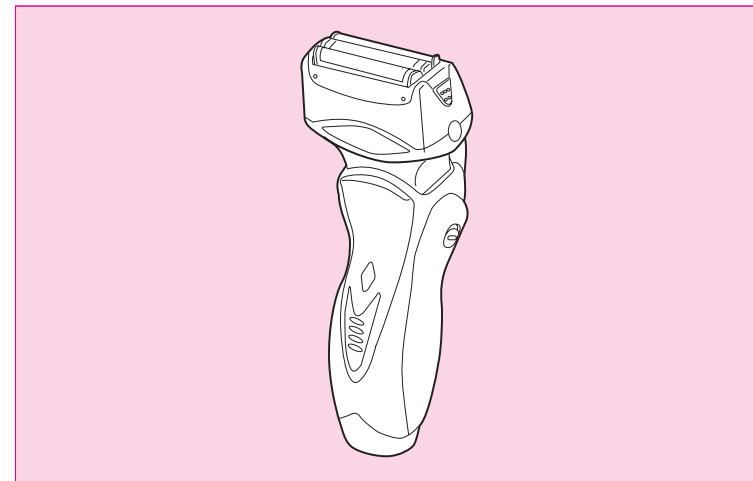


# Panasonic

## Wet/Dry/Rechargeable Shaver OPERATING INSTRUCTIONS

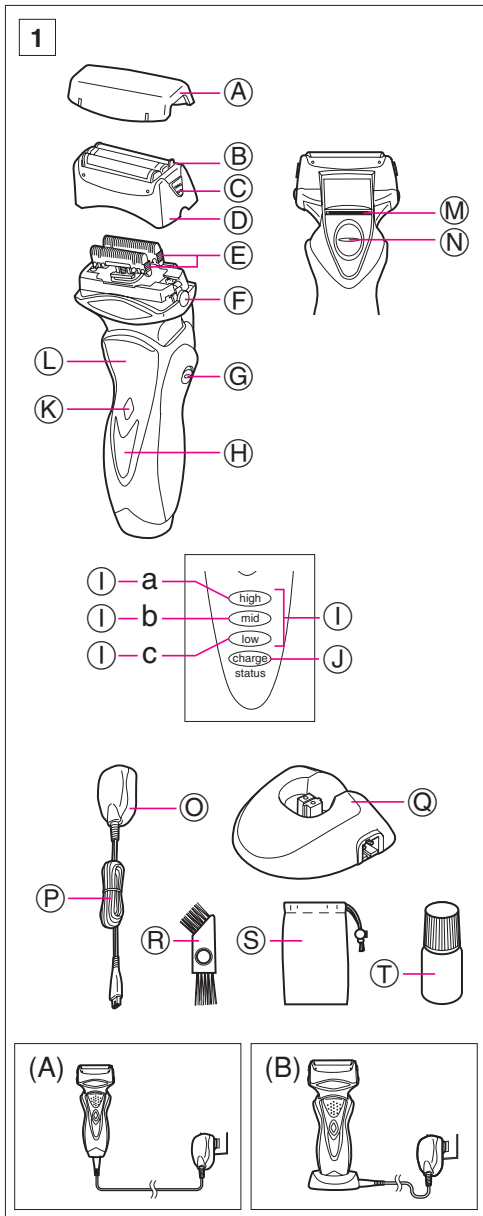
Model No. ES8044



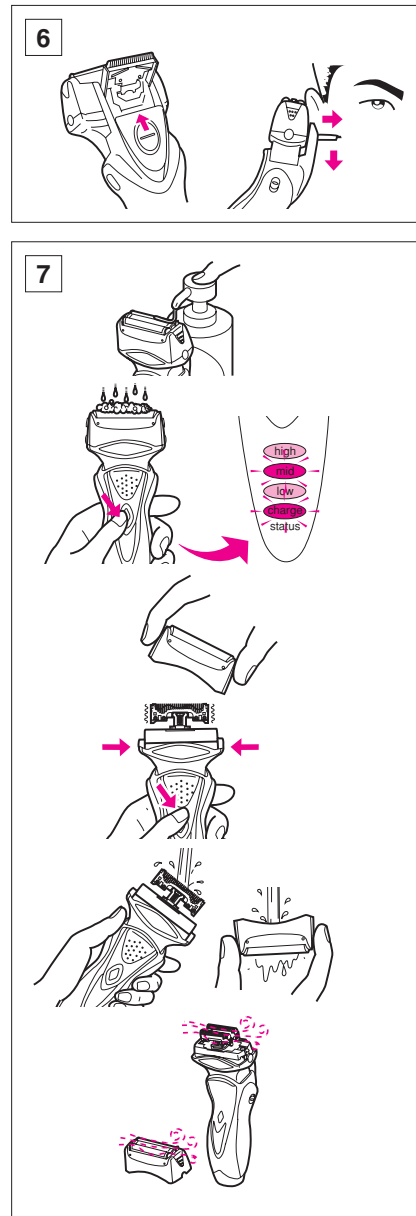
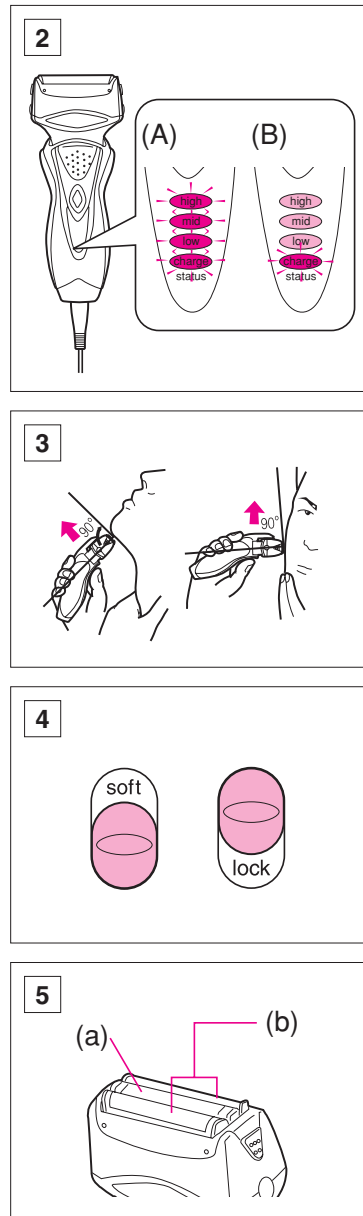
**Panasonic Electric Works Wanbao (Guangzhou) Co., Ltd.**

Wanbao Base Shiguang Road, Panyu District,  
Guangzhou, Guangdong, 511495 CHINA

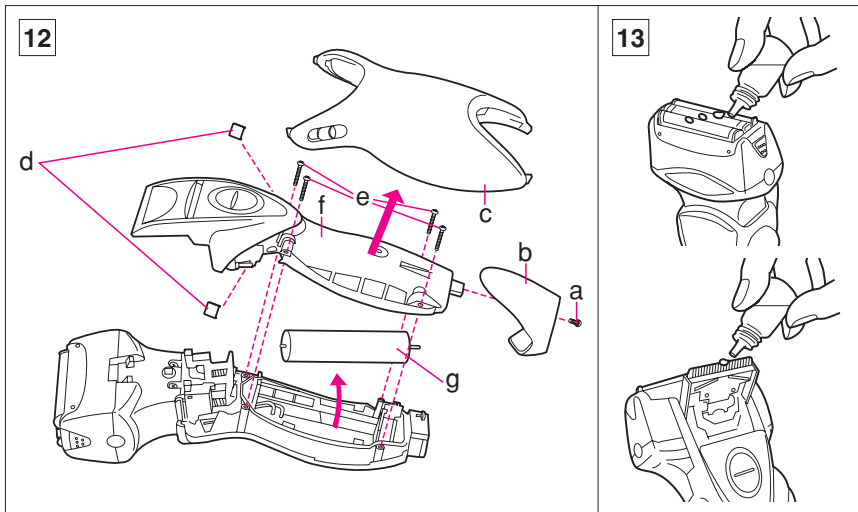
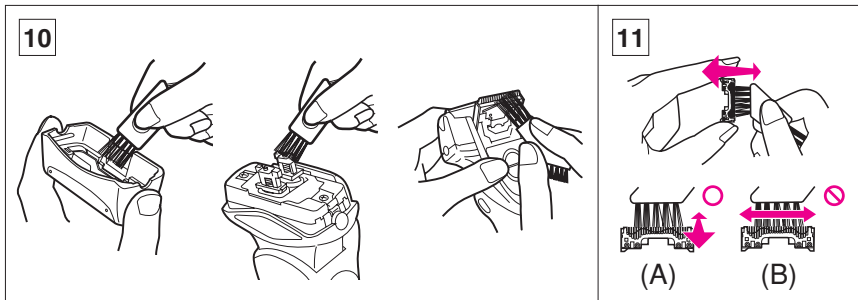
Before operating this unit, please read these instructions completely.



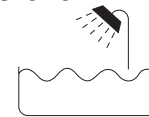
2



3



This Wet/Dry shaver can be used for wet shaving with shaving lather or for dry shaving. You can use this water-tight shaver in the shower and clean it in water. The following is the symbol of Wet shaver. The symbol means that hand-held part may be used in a bath or shower.



Treat yourself to wet lather shaves for at least three weeks and notice the difference. Your Panasonic Wet/Dry shaver requires a little time to get used to because your skin and beard need about a month to adjust to any new shaving method.



(see fig. 1)

- (A) Protective cap
- (B) System outer foil
- (C) System outer foil release buttons
- (D) Foil frame
- (E) Inner blades
- (F) Foil frame release buttons
- (G) Pivot action selector
- (H) LED display
- (I) Battery capacity monitor
  - ①-a high
  - ①-b mid
  - ①-c low
- (J) Charge status lamp

- (K) On/Off switch
- (L) Finger rest
- (M) Trimmer
- (N) Trimmer handle
- (O) Adaptor
- (P) Power cord
- (Q) Charging stand
- (R) Cleaning brush
- (S) Soft case
- (T) Oil

**READ ALL INSTRUCTIONS BEFORE USE.**

### Charging

Connect the power cord to the shaver, and plug the adaptor to an AC outlet. (see fig. 1 (A))

The shaver will be adjusted automatically to voltages between 100-240V AC.

In some areas, a special plug adaptor may be required.

- When charging the shaver for the first time or when it has not been in use for more than 6 months, the charge status lamp may not illuminate for a few minutes after operation. It will eventually illuminate if kept connected.

Adequate ambient temperature for charging is between 15 to 35 °C.

- If it is far below or over the appropriate temperature, the charging time may extend, or the adaptor may not function.
- In particular, low temperature may shorten the life span of the

re-chargeable battery, In this case, the charge status lamp blinks twice in 1 second.

The charge status lamp will glow when the shaver is being charged. The battery capacity monitor will all illuminate and the charge status lamp will blink after charging is completed (see fig. 2 (A)).

10 minutes after charging is completed, the battery capacity monitor will extinguish and the charge status lamp will continue to blink (see fig. 2 (B)).

You can fully charge the shaver in 1 hour if the LED display shows “low” (low).

The battery capacity monitor indicates the charge remaining in the battery in 3 levels (high/mid/low). The unit can be used once or twice more after the “low” (low) starts to blink. (Differs depending on the use situation.)

A full charge will supply enough power for approx. 14 shaves (3 minutes per shave for a normal beard).

Before travelling, charge it fully for 1 hour if you will not be taking the adaptor with you.

In case your shaver is without charge, you may quick charge it for 1 shave in about 5 minutes.

## Charge with charging stand

(see fig. 1 (B))

To charge with the charging stand, connect the power cord to the charg-

ing stand. Place the shaver into the stand, and plug the adaptor to the AC outlet.

You can always store your shaver in the charging stand to maintain full battery capacity. This shaver cannot be overcharged.

## Using your shaver

**Caution** – The system outer foil is very thin and can be damaged if handled improperly. Before each use, always check the foil for damage. To avoid personal injury, do not use if the foil or other parts of the shaving head is damaged.

Disconnect the power cord from the shaver, and push the On/Off switch to turn the shaver on.

If you push and hold the On/Off switch for more than 2 seconds, it will activate the turbo mode for “sonic” vibration cleaning. (see “Cleaning your shaver”)

**Caution:**

Shaving with “sonic” vibration may damage your skin. Please turn it off and on again to deactivate the turbo mode.

Do not place fingers on the On/Off switch during use.

This may cause the shaver to stop during use or change it to the “sonic” vibration cleaning mode. Place your finger on the finger rest during use.

Hold the shaver at a right angle (90°) to your skin (see fig. 3). Start out shaving by applying gentle pressure

to your face. Stretch your skin with your free hand and move the shaver back and forth in the direction of your beard. You may gently increase the amount of pressure as your skin becomes accustomed to this shaver. Applying excessive pressure does not provide a closer shave.

## Pivot action selector

(see fig. 4)

Use the pivot action selector to choose the shaving mode, “soft” (soft) and “lock” (lock) based on your shaving preference.

The pivot action can be changed whether the switch is turned on or off.

## System outer foil

(see fig. 5)

System outer foil has a slit blade (a) between 2 foils (b). They move up and down independently to follow the contours of your face.

The slit blade catches and cuts longer and lying hairs easily.

## For wet shaving

Put a thin layer of shaving foam on your face which works as a lubricator. Shaving foam is the most suitable among many other shaving aids (gel, soap, cream, etc.). Do not put a thick layer of shaving foam as it may affect shaver’s performance. If the shaving head is clogged with foam, simply rinse it under running water.

## Using the trimmer

(see fig. 6)

Slide the trimmer handle up to open the trimmer.

Place the trimmer at a right angle to your skin and move it downward to

trim sideburns.

## Cleaning your shaver

(see fig. 7)

**Warning** – To prevent electric shock or personal injury, disconnect the power cord from the shaver before cleaning with water.

For cleanliness and convenience, we recommend that you clean your shaver with water and a liquid hand soap. Regular cleaning will keep your shaver in good condition while preventing odors or bacteria from developing, and maintain the cutting performance.

With the system outer foil in place, apply some hand soap onto the outer foil.

Push and hold the On/Off switch more than 2 seconds to activate the turbo mode for “sonic” vibration cleaning.

At the same time, the lamps of the Battery capacity monitor will flash around randomly.

Pour some water over the outer foil. After about 20 seconds, it will be automatically turned off, or you can turn it off by pushing the On/Off switch.

Remove the foil frame and push the On/Off switch more than 2 seconds to activate the turbo mode for “sonic” vibration cleaning and clean it with running water.

Wipe off any moisture from the shaver with a dry cloth and dry it without the foil frame.

## Lubrication

(see fig. 13)

To maintain shaving comfort for a long time, it is recommended that the oil provided with the shaver is used.

1. Switch off the shaver.
2. Apply one drop of oil to each of the outer foils.
3. Raise the trimmer and apply a drop of oil.
4. Switch the shaver on, and run it for approximately five seconds.
5. Switch off the shaver, and wipe off any excess oil from the outer foils with a soft cloth.

## Brush cleaning

Squeeze the foil frame release buttons and lift the foil frame upward to remove it (see fig. 9). Remove the inner blades one at a time by grasping it firmly at both ends and pulling it straight away from the shaver. Clean the outer foils, the shaver body and the trimmer with the long brush (see fig. 10). Clean the inner blades with the short brush by moving it in the direction in fig. 11 (A). Do not move the brush in the direction in fig. 11 (B), as it will damage the inner blade, and its cutting performance. Do not use the short brush to clean the outer foils.

## Replacing shaving head components

It is recommended that you replace the system outer foil at least once a year and the inner blade at least once every 2 years to maintain your shaver's cutting performance.

## Replacing the system outer foil

(see fig. 8)

Squeeze the system outer foil release buttons and lift the system outer foil upward to remove it. To insert the new system outer foil, press down until it snaps into place.

## Replacing the inner blades

(see fig. 9)

Squeeze the foil frame release buttons and lift the foil frame upward to remove it. Remove the inner blade one at a time by grasping it firmly at both ends and pulling straight away from the shaver.

Do not touch the metal parts of inner blades.

To insert the new inner blade, hold the blade one at a time at both ends and press downward until it snaps into the shaver.

## For environmental protection and recycling of materials

This shaver contains a Lithium-ion battery.

Please make sure that the battery is disposed of at an officially assigned location, if there is one in your country.

## How to remove the built-in rechargeable battery before disposal of the shaver

(see fig. 12)

### WARNING:

Do not attempt to replace the battery for the purpose of reusing the shaver. This could result in the risk of fire or electric shock.

The battery in this shaver is not intended to be replaced by consumers. However, the battery may be replaced at an authorized service center. The procedure described below is intended only for removal of the rechargeable battery for the purpose of proper disposal.

1. Disconnect the power cord from the shaver when removing the battery.
2. Remove the bottom cover screw (a).
3. Remove the bottom cover (b).
4. Slide the back panel (c) and remove it.
5. Remove the housing clips (d).
6. Remove the four housing screws (e).
7. Remove the housing B (f).
8. Lift the battery (g) and remove it.

## Caution

- Do not charge the shaver, where it will be exposed to direct sunlight or a heat source, or where there is a lot of moisture.
- Use only the included adaptor RE7-27 to charge the shaver.
- Dry the shaver completely before charging it.
- The shaver and adaptor will become slightly hot during use or charging, however this is not a malfunction.
- Keep the adaptor away from water and handle it only with dry hands.
- Grip the adaptor when disconnecting it from an AC outlet; tugging on the power cord may damage it.
- Store the adaptor in a dry area where it will be protected from damage.
- Do not pull, twist, or severely bend the power cord.
- Do not wrap the power cord tightly around the appliance.
- If the power cord gets damaged, it alone can not be replaced. Contact an authorized service center.
- In cases where static noise is emitted from the television during use or recharging, connect the adaptor to a different outlet.
- Do not touch the edge (metal part) of the inner blade. Failure to observe this may lead to hand injuries.
- Wash the shaver in tap water. Do not use salt water or boiling water. Also, do not use cleaning products that are designed for toilets, bathrooms or kitchen appliances. Do not submerge the shaver for a long time.
- Do not wipe any part of the shaver with thinner, benzine or alcohol. Clean it by using a cloth dampened with soapy water.
- Do not take the housing apart as this can affect the watertight construction.
- Do not clean with water when the shaver is connected to the power cord.
- When cleaning the shaver with water, do so with both the inner blades attached. (Doing so with only one of the inner blades attached makes an abnormal noise and may damage the shaver.)
- Keep the unit away from children.
- Keep instructions in a safe place.
- This appliance is not intended for



use by young children or infirm persons unless they have been adequately supervised by a responsible person to ensure that they can use the appliance safely.

- Young children should be supervised to ensure that they do not play with the appliance.

This product is intended for household use only.