

ECONAVI **INVERTER**

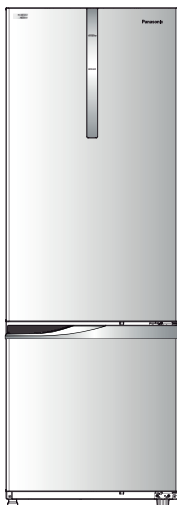
Panasonic[®]

Operating Instructions

Refrigerator

For Household Use

Model No. **NR-BR34B**



Contents

• Safety precautions	2
• Usage precautions	3
• Installation	4
• Parts identification	5
• Temperature control	6
• ECONAVI operation	6
• Usage tips	7
• How to make ice cubes	8
• How to clean the refrigerator	9
• Troubleshooting	10
• Specifications	11

Thank you for purchasing the Panasonic product.

- Please read these instructions carefully and follow safety precautions page 2-3 before using this product.
- Please make sure the date and name of store of purchase are stamped in warranty card and keep it with this operating instructions.

AUS/NZ

AK-178540
T0517-0
Printed in Thailand
05-2017

Safety precautions

Please be sure to follow these instructions.



WARNING

This sign means
[serious injury or death may occur.]



CAUTION

This sign means
[personal injury or property damage may occur.]



These signs mean
prohibited action.



This sign means required action.

Otherwise it may
cause a fire, injury,
electrical shock.



WARNING

For power plug and cord...



- Do not plug or unplug with wet hands.
- Do not let the cord or plug be damaged.



- Disconnect power plug when cleaning.
- Plug into a wall outlet of the rated voltage on its own with the rated current and insert plug fully.
- Reserve one plug for the refrigerator only. Avoid connecting many appliances to the same outlet and ensure the cord is uncoiled to its full length.
- Remove dust periodically from the power plug.
- If the supply cord is damaged, it must be replaced by the manufacturer, its service agent or similarly qualified persons in order to avoid a hazard.
- If you detect burning smell, disconnect the power plug and ventilate the kitchen.
- **Stop** using the refrigerator immediately if there is an abnormality or failure. (Otherwise it may cause smoke, a fire or electrical shock)
Abnormality and failure examples
 - Power cord or plug is abnormally hot
 - Power cord is deeply cut or deformed
 - There is burning smell
 - You can feel tingling electricity

In case of emergency...



- Do not use electrical appliances inside the food storage compartments of the appliance, unless they are of the type recommended by the manufacturer.



- Do not disassemble, repair or modify the refrigerator by yourself. If you want to repair the refrigerator, please consult your dealer or authorized service center.
- Do not use mechanical devices or other means to accelerate the defrosting process, other than those recommended by the manufacturer.



- Maintenance work must only be carried out by qualified staff.

To prevent burn...



- Do not touch the compressor and pipes, as these are very hot and may cause a burn injury.

When using...



- Do not damage the refrigerant circuit (piping on the back.)
- Do not touch compressor or pipe, this area is very hot.
- Do not let children hang from the refrigerator door, it may overturn and injure the child.
- Do not place any water container on the top of the refrigerator.



- This appliance is not intended for use by persons (including children) with reduced physical, sensory or mental capabilities, or lack of experience and knowledge, unless they have been given supervision or instruction concerning use of the appliance by a person responsible for their safety.
- Children should be supervised to ensure that they do not play with the appliance.

When recycling the product...



- Before taking the refrigerator to be recycled, please remove all the door gasket to prevent a child becoming trapped inside.
- The operating instructions should be kept with the appliance at all times.
- Cyclo-Pentane is used for insulation of this refrigerator and flammable gas is used for refrigerant. When disposing of this unit, please discard it by the proper method and do not dispose of the unit by burning.
- The warning labels mentioned above should be kept throughout the life of the refrigerator.

When installing the product...



- Keep ventilation openings, in the appliance enclosure or in the built-in structure, clear of obstruction.

Otherwise it may
cause injury,
accidents.

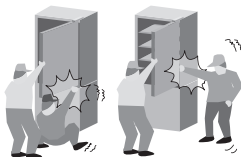


CAUTION

When opening/closing the doors...



- Keep fingers away from hinges and seal to avoid injury.
- Keep fingers away from the gap between doors to avoid injury.



When storing food...



- **Do not** freeze glass bottles containing liquid as expansion may cause the glass to break.
- Avoid high impact when placing containers on the glass trays as this could cause them to break.



When moving the refrigerator...



- Hold the refrigerator tightly when transporting.
- Use a protective covering to fragile floors to avoid damage.



Usage precautions

When opening/closing the doors...

- **Do not** refrigerate items which are bigger than tray or shelf, as the door will not close completely causing leakage of cool air.
- **Do not** open refrigerator frequently or leave it open for long periods of time in order to prevent water dripping inside and waste energy.
- Frequently check and clean the door gasket to ensure a proper seal between the fridge and door.

When cleaning...

- **Do not** clean the appliance with harsh chemicals or liquid, this may cause damage to the surface or corrosion.
- Clean the evap pan located over the compressor at the back of the refrigerator every three months to prevent odour generated from humidity.



When using...

- **Do not** put anything on top of the refrigerator. Otherwise, it may fall due to vibration.
- When the plug is disconnected, leave it for 5 minutes before plugging in again.
- Adjust the temperature according to the actual operating condition for energy saving.
- The outside wall of refrigerator cabinet may sometimes get warm, especially just after installation. This is quite normal, and is due to the built-in Mullion Dryer Pipe which prevents sweating and radiates heat.
- When humidity is high, condensation may appear on the surface of cabinet, wipe off the condensed water with a clean cloth.
- Clean the fresh case once a month.



When storing food...

- **Do not** place warm/hot foodstuff in the refrigerator.
- **Do not** overload the refrigerator. Gap must be provided between foodstuffs to maintain the cooling effect.
- Store fruits and vegetables in crisper, where trapped moisture helps preserve food quality for longer time periods.
- Drinking water, beverage bottles should be sealed to prevent odour.
- Foodstuff such as vegetable, fruits and fresh food should be wrapped or pack in a container before freezing and refrigerating.
- Put food such as meat or fish in the freezer if you want to store for an extended period.
- Cool hot dishes to room temperature before placing them in your refrigerator.
- Cover juicy foods with tight lids, plastic film or foil.
- **Do not** keep the door open any longer than necessary, particularly in hot, humid weather.



The refrigerator will not be
used for a long period of
time.



Unplug the refrigerator and take out all the food in the refrigerator.
Wipe off the water and open the refrigerator to keep it dry.
Prevent children from entering the refrigerator.

Installation

The distance from the wall

- The top of the refrigerator and the ceiling at least 5 cm.
- The wall and the back of the refrigerator at least 10 cm.
- The side of the refrigerator and the wall at least 5 cm.

Area around installed

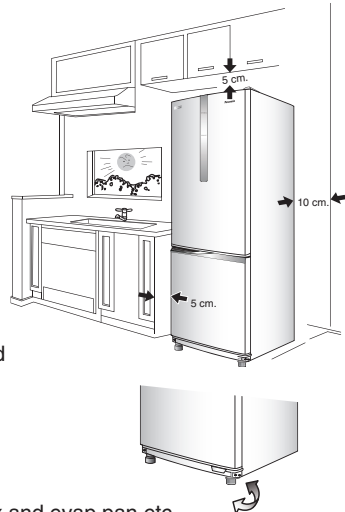
- **Do not** locate the refrigerator in a humid place as rust may form and may cause electric leakage.
- **Do not** locate the refrigerator exposing to direct sunlight as the heat and sunlight will increase the temperature.
- **Do not** locate the refrigerator near heat source such as cooking stove or oven.
- The refrigerator must be located in the place where there is good air circulation.
- In case of placing the refrigerator on an uneven surface, adjust the adjuster bolt to make the refrigerator stands stably.

Moving or shifting

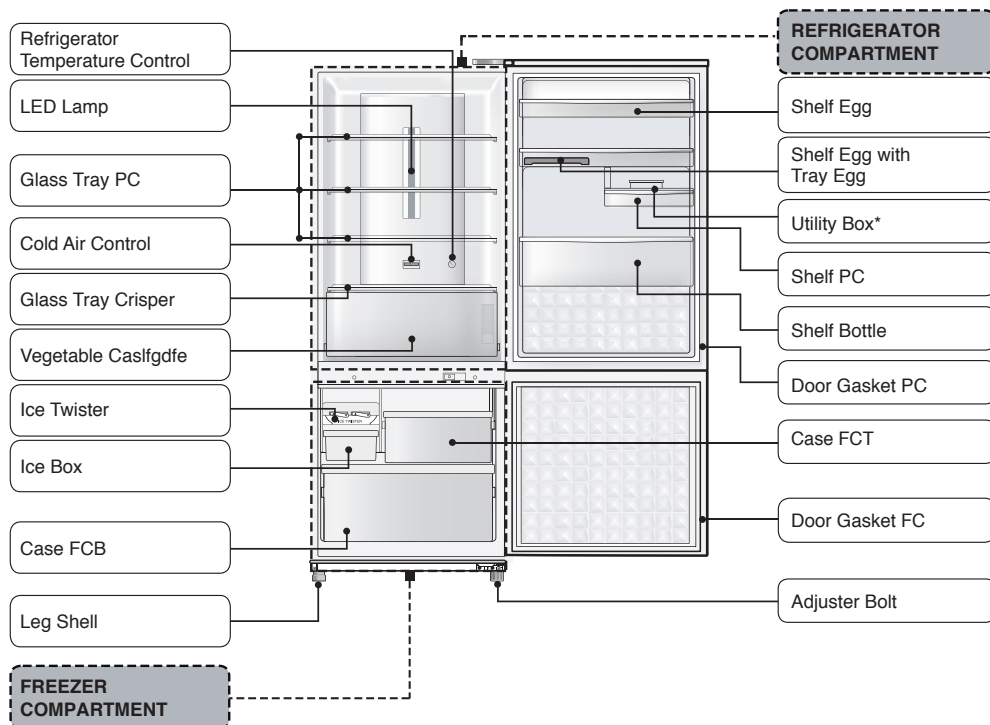
- When moving or shifting the refrigerator, remove ice tray, ice box and evap pan etc. check that there is no water in the refrigerator.

LED lamp

- The refrigerator LED lamp is specifically designed for this refrigerator, if the LED needs replacement please contact Panasonic Service Center.
- If there is no grounding wiring plug in refrigerator, it should be connected with grounding connection to prevent electrical hazard.

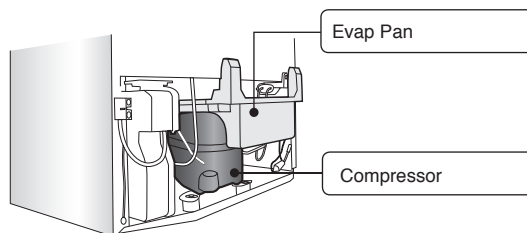


Parts identification



*For only model

- P Series



Product view from behind.

SPECIAL FEATURE

■ NON-CFC

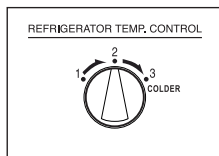
This unit uses totally **NON-CFC MATERIALS** both for refrigerant (HFC-134a) and for insulation (Cyclo-Pentane). So, this refrigerator does not damage the earth's ozone layer.

■ INVERTER

Depending on the cooling requirements the inverter compressor runs at different speeds. When the temperature is stable, the motor runs at lower speed (energy saving & lower noise). When powerful cooling is required, the motor runs at a higher speed.

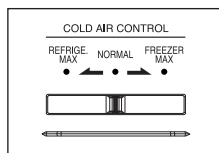
Temperature control

Operate the "REFRIGERATOR TEMP. CONTROL" when changing the temperature of refrigerator compartment.



TEMP. CONTROL REFRIGERATOR COMPARTMENT	
"1" (Min)	Higher than "2" by approximately 2°C ~ 3°C
"2" (Med)	Approximately 3°C ~ 5°C
"3" (Max)	Lower than "2" by approximately 2°C ~ 3°C

Operate the "COLD AIR CONTROL" by sliding the lever to adjust cold air condition.



COLD AIR CONTROL	
"REFRIG. MAX"	Refrigerator compartment takes priority.
"NORMAL"	Cold air condition is normal.
"FREEZER MAX"	Freezer compartment takes priority.

Note: Temperature control varies depending on the changing of environment and food storage quantity.

ECONAVI operation

- This refrigerator also has ECONAVI mode, but it does not feature ECONAVI lamp and light intensity sensor.
The ECONAVI detect opening and closing of door*¹
- The refrigerator will learn the lifestyle patterns of your family from opening and the time periods of infrequent use to perform ECONAVI operation.

Remark :

- The refrigerator learns your lifestyle pattern from the previous 3 weeks, and uses what it has learned from the 4th week onwards.

Setting for enabling ECONAVI operation

- ECONAVI operation is enabled automatically when the temperature control of the freezer and refrigerator compartment is set to "Med".
- It is not possible to force ECONAVI operation to start when the temperature control of the refrigerator compartment is set to "Max" or "Min".

Remark :

*¹ Effectiveness differs depending on the ambient temperature, number of times when doors are opened and closed, and state in which food is stored.

Usage tips

Energy saving tips



Basics of energy saving
Save cool air!

Do not block the cold air outlet with food!

If cool air does not spread into every corner of compartments, refrigerator will not be sufficiently cooled and more electricity will be consumed.



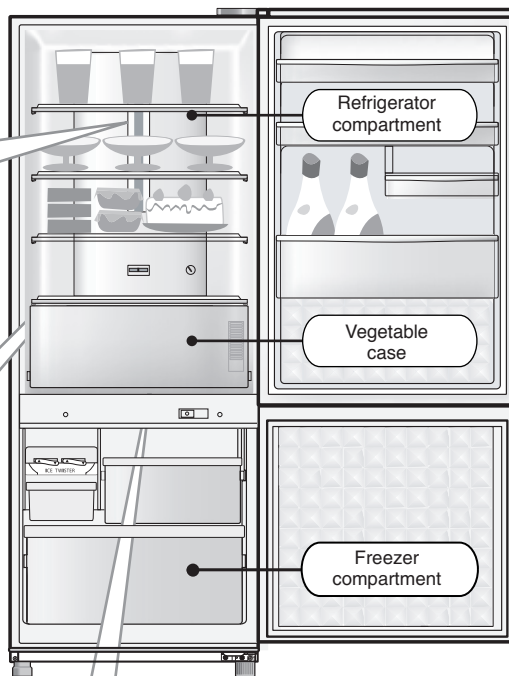
Do not stuff food into the compartments.

If the cool air passage is blocked, approx. 5 to 15% of electricity will be wasted. Provide sufficient space between foods.



Cool down warm food and drinks before storing it.

Always cool warm items to room temperature before storing in the fridge or freezer compartment.



When condensation occurs.

■ High humidity in the vegetable case may cause condensation, if this occurs, wipe with a clean cloth.

Do not put food in the refrigerator when it is not necessary.

■ A cold dark place will suffice!



It is not necessary to store uncut onions, potatoes, burdocks, etc. in the refrigerator (except during the summer).

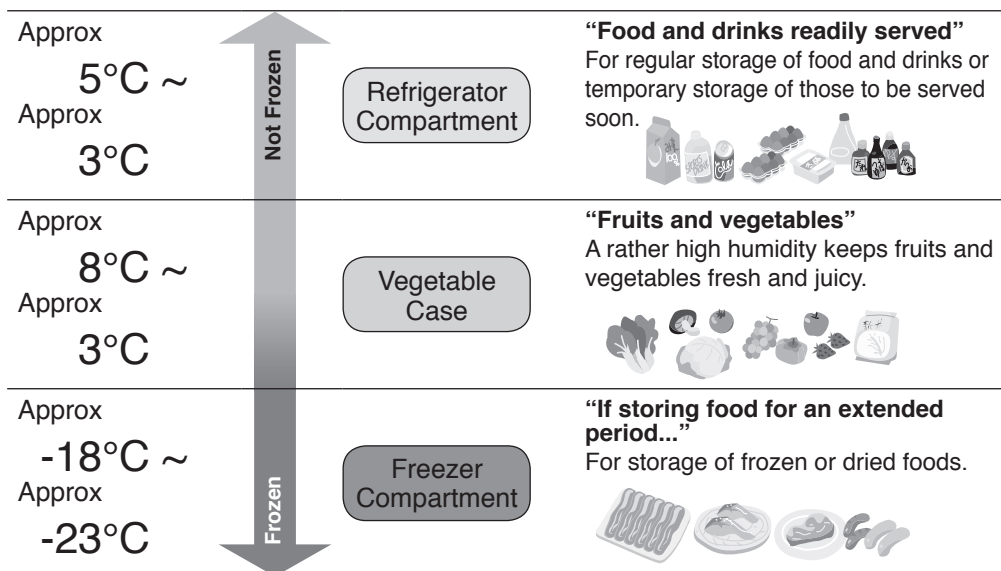
■ Cool just before you eat!



If uncut tropical fruits are cooled down excessively, they may be discolored or their vitamin contents may decrease.

Usage tips

Where shall we keep food ?



Storage using hermetically sealed containers is recommended!

To prevent the interior from being discolored!



- Cut citrus fruits
(→ The plastic will be discolored white.)

To prevent odors from spreading!

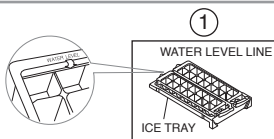


- Garlic or other strong smelling vegetables
(→ Odors will spread to other nearby food.)

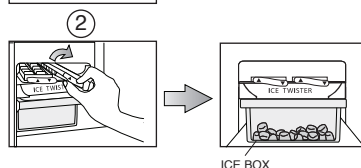
How to make ice cubes

STEP

1. Pull out the ice tray and fill with water to the level mark



2. To remove ice cubes, twist the ice tray clockwise. The ice cubes will drop into the ice box.



How to clean the refrigerator

1 Interior cleaning.

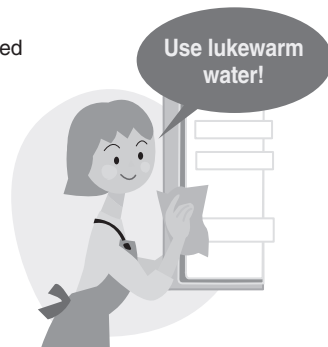
Wipe off stains with warm water. When stains can not be removed easily, wipe them with warm water and soap with a soft cloth. Then wipe the soap off using damp soft cloth.

2 Exterior cleaning.

Clean using a soft cloth with warm water and soap. Then wipe off the soap.

3 Door gasket PC/FC.

- Clean by wiping softly. Petroleum gel is applied to the gasket at manufacture to reduce friction, take care not to wipe it off when cleaning.
- The door seal is a replaceable item, if it comes off, push it back into the groove.



Note: Do not use the following items. (Otherwise, the surface will be scratched.)



Kitchen detergents
(They crack plastic!)

Alkaline or faintly
Alkaline



Cleanser or soap
powder



Benzine, thinner, alcohol,
acid, petroleum



Scrubber

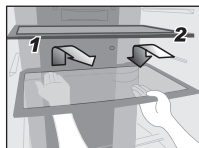


Hot Water

Removing trays for cleaning.

• Removing

1. Unhook the protrusion at the back by lifting it upward and pull the tray forward until removed.



• Attaching

2. Push the tray in until it reaches the end lock.

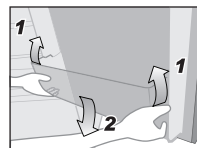
Removing shelf egg, shelf PC and shelf bottle for cleaning.

• Removing

1. Lift it upward, alternating between the right and left side.

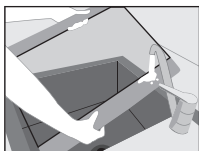
• Attaching

2. Place it on both supports and press down until it is firmly seated.



Cleaning escutcheon glass tray crisper.

1. If there is the stain on escutcheon glass tray crisper, please remove and clean by rinsing with clean water.

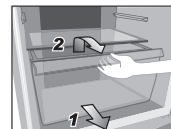


2. If there is a deep stain on glass tray crisper, please soak in warm water and then rinse with clean water again.

Removing the vegetable case and case FCB for cleaning.

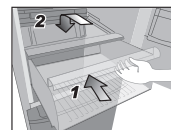
• Removing

1. Pull the case until it reached the end of the stopper.
2. Lift the front of the case a few centimeters and then pull out until removed.



• Attaching

1. Push the case in on both supports
2. Lift it up, then push until it reaches the end.

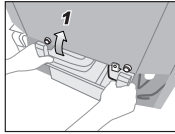


How to clean the refrigerator

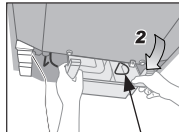
Removing the evap pan for cleaning.

● Removing

1. Tilt up the evap pan a bit and then lift it upward until the evap pan hole unlocks from the hook evap pan.



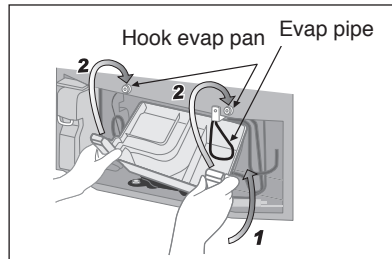
2. Pull the evap pan until touching with evap pipe then carefully take it out under the evap pipe.



Evap pipe

● Attaching

1. Insert the evap pan under the evap pipe.
2. Insert the evap pan hole into the hook evap pan as well as pressing both sides.



Note: Please do not deform the evap pipe.

Troubleshooting

The refrigerator does not operate.

- Check that the plug and its socket are in good condition.
- Check if there is any problem on main fuse and electrical system of the house.
- Check by unplugging and wait for 5 minutes then plugging it back in again.

The refrigerator does not cool enough.

- Check that the temperature control button is at the proper position.
- Ensure the refrigerator is not overloaded or hot food items are inside.
- Is the refrigerator exposed directly to sunlight or heat source?
- Is the refrigerator door completely closed?
- Is the refrigerator door opened frequently?

Condensation is generated inside and outside the cabinet / surface of door.

- Condensation may appear on the surface of cabinet when humidity is high.
- If there is condensation inside, check if the door is completely closed.
- Is the refrigerator frequently opened or left open for a long time?
- Is there any hot foodstuff refrigerated inside?

The refrigerator generates noise.

- Check if the refrigerator is located on a stable floor or is installed properly.
- Check if there is any object in contact with the refrigerator.
- Cracking sounds while the fridge is adjusting to temperature are normal.
- After installation, the refrigerator may make loud noise. The noise will be less when the refrigerator has cooled.

LED lamp does not turn on.

- Please contact Panasonic service center.

Food becomes frozen

- Do you put the food near cold air duct?
- Do you adjust the temperature control at "Max"? Should Adjust to "Med" or "Min".

Specifications

Model No.		NR-BR34B
Freezer Star Rating		✱ ***
Capacity (L) Gross/Storage (AS/NZS 4474.1)	Total	342 / 282
	Freezer	92 / 48
	Refrigerator	250 / 234
Outside Dimensions Width x Depth x Height (mm)		600 x 626 x 1732
Refrigerant Type		HFC-134a
Net Weight (kg/lb)		53 / 117
Cooling System		Non-frost cooling.
Rated Voltage (V) Rated Frequency (Hz)		Refer to the rating label attach at the door.



Panasonic Corporation

<http://www.panasonic.com>

© Panasonic Appliances (Thailand) Co., Ltd. 2017