

# Panasonic®

## Operating Instructions

# CD Stereo System

Model No. **SC-AKX200**



Thank you for purchasing this product.

For optimum performance and safety, please read these instructions carefully.

Please keep this manual for future reference.

Manufactured by:	Panasonic Corporation Kadoma, Osaka, Japan
Importer for Europe:	Panasonic Marketing Europe GmbH Panasonic Testing Centre Winsbergring 15, 22525 Hamburg, Germany

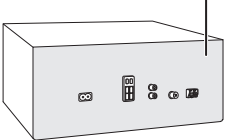
## Panasonic Corporation

Web Site: <http://www.panasonic.com>

© Panasonic Corporation 2015

Your system and the illustrations can look differently. These operating instructions are applicable to the following system.

<b>System</b>	SC-AKX200
<b>Main unit</b>	SA-AKX200
<b>Speakers</b>	SB-AKX200



Back of product

**Disposal of Old Equipment and Batteries Only for European Union and countries with recycling systems**



These symbols on the products, packaging, and/or accompanying documents mean that used electrical and electronic products and batteries must not be mixed with general household waste.

For proper treatment, recovery and recycling of old products and used batteries, please take them to applicable collection points in accordance with your national legislation.

By disposing of them correctly, you will help to save valuable resources and prevent any potential negative effects on human health and the environment.

For more information about collection and recycling, please contact your local municipality.

Penalties may be applicable for incorrect disposal of this waste, in accordance with national legislation.



**Note for the battery symbol (bottom symbol):** This symbol might be used in combination with a chemical symbol. In this case it complies with the requirement set by the Directive for the chemical involved.

## Licenses

The Bluetooth® word mark and logos are registered trademarks owned by Bluetooth SIG, Inc. and any use of such marks by Panasonic Corporation is under license. Other trademarks and trade names are those of their respective owners.

Google Play and Android are trademarks of Google Inc.

RQT9971-B			
L0215L00			

### NORSK

### ADVARSEL!

#### Produkt

- For å redusere faren for brann, elektrisk stot eller skade på apparatet:
  - Dette apparatet må ikke utsettes for regn, fuktighet, drypp eller sprut.
  - Ikke plasser objekter som er fylt med væske, som vaser, på apparatet.
  - Bruk kun anbefalt tilbehør.
  - Fjern ikke deksler.
  - Dette apparatet må ikke repareres på egen hånd. Overlåt servicearbeider til kvalifisert servicepersonell.

### FORSIKTIG!

#### Produkt

- For å redusere faren for brann, elektrisk stot eller skade på apparatet:
  - Ikke plasser apparatet i en bokhylle, et innbygget kabinett eller et annet lukket sted. Pass på at apparatet er godt ventilert.
  - Apparatets ventilasjonsåpninger må ikke dekkes til med aviser, duker, gardiner eller lignende.
  - Plasser ikke åpen ild, slik som levende lys, oppå apparatet.
- Dette apparatet er beregnet til bruk under moderate klimaforhold.
- Dette apparatet anvender en laser. Betjening av kontroller, justeringer eller andre inngrep enn de som er beskrevet i denne bruksanvisning, kan føre til farlig bestråling.

#### Vekselstrømmott

- Støpselet er frakoblenet enhet. Strømtuttaket må finne seg i nærheten slik at støpselet lett kan kobles ut fra tttaket umiddelbart.

### Caution for AC mains lead

(For the AC mains plug of three pins)

For your safety, please read the following text carefully.

This appliance is supplied with a moulded three pin mains plug for your safety and convenience. A 5-ampere fuse is fitted in this plug. Should the fuse need to be replaced please ensure that the replacement fuse has a rating of 5-ampere and that it is approved by ASTA or BSI to BS1362.

Check for the ASTA mark or the BSI mark on the body of the fuse.

If the plug contains a removable fuse cover you must ensure that it is refitted when the fuse is replaced. If you lose the fuse cover the plug must not be used until a replacement cover is obtained.

A replacement fuse cover can be purchased from your local dealer.

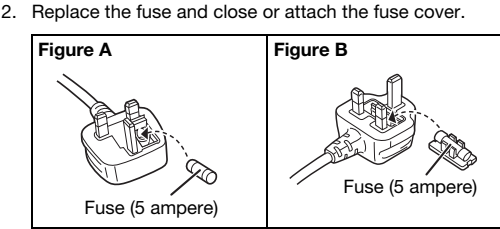
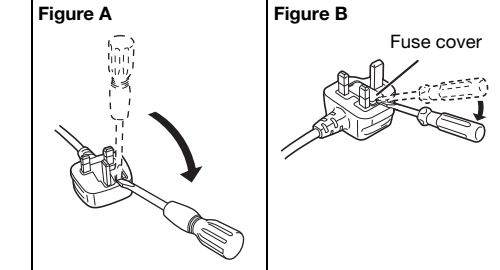
#### Before use

Remove the connector cover.

#### How to replace the fuse

The location of the fuse differ according to the type of AC mains plug (figures A and B). Confirm the AC mains plug fitted and follow the instructions below. Illustrations may differ from actual AC mains plug.

- Open the fuse cover with a screwdriver.



### About Bluetooth®

Panasonic bears no responsibility for data and/or information that can possibly be compromised during a wireless transmission.

#### Frequency band

- This system uses the 2.4 GHz frequency band.

#### Certification

- This system conforms to the frequency restrictions and has received certification based on frequency laws. Thus, a wireless permit is not necessary.
- The actions below are punishable by law:
  - Taking apart or modifying the main unit.
  - Removing specification indications.

#### Restrictions of use

- Wireless transmission and/or usage with all Bluetooth® equipped devices is not guaranteed.
- All devices must conform to standards set by Bluetooth SIG, Inc.
- Depending on the specifications and settings of a device, it can fail to connect or some operations can be different.
- This system supports Bluetooth® security features. But depending on the operating environment and/or settings, this security is possibly not sufficient. Transmit data wirelessly to this system with caution.
- This system cannot transmit data to a Bluetooth® device.

#### Range of use

- Use this device at a maximum range of 10 m.
- The range can decrease depending on the environment, obstacles or interference.

#### Interference from other devices

- This system may not function properly and troubles such as noise and sound jumps may arise due to radio wave interference if this unit is located too close to other Bluetooth® devices or the devices that use the 2.4-GHz band.
- This system may not function properly if radio waves from a nearby broadcasting station, etc. is too strong.

#### Intended usage

- This system is for normal, general use only.
- Do not use this system near an equipment or in an environment that is sensitive to radio frequency interference (example: airports, hospitals, laboratories, etc.).

### Sales and Support Information

For the United Kingdom and Ireland

#### Customer Communications Centre

- For customers within the UK: 0344 844 3899
- For customers within Ireland: 01 289 8333
- Monday – Friday 9:00am – 5:00pm (Excluding public holidays).
- For further support on your product, please visit our website: [www.panasonic.co.uk](http://www.panasonic.co.uk)

#### Direct Sales at Panasonic UK

- Order accessory and consumable items for your product with ease and confidence by phoning our Customer Communications Centre
  - Monday – Friday 9:00am – 5:00pm (Excluding public holidays).
- Or go on line through our Internet Accessory ordering application at [www.pas-europe.com](http://www.pas-europe.com).
- Most major credit and debit cards accepted.
- All enquiries transactions and distribution facilities are provided directly by Panasonic UK.
- It couldn't be simpler!
- Also available through our Internet is direct shopping for a wide range of finished products. Take a browse on our website for further details.

### Supplied accessories

Check and identify the supplied accessories.

For the United Kingdom and Ireland

Use numbers indicated in parentheses when asking for replacement parts. (Product numbers correct as of February 2015. These may be subject to change.)

- For Australia and New Zealand


#### 1 AC mains lead


- Except for Australia and New Zealand


#### 2 AC mains leads

For the United Kingdom and Ireland

- 1 AM loop antenna (N1DYYYY00011)

- 1 FM indoor antenna (RSAX0002) 

- 1 Remote control (N2QAYB001019) 

- 1 Remote control battery 

For the United Kingdom and Ireland

- 1 Antenna plug adaptor (K1YZ02000013) 

### Specifications

#### Amplifier section

RMS output power stereo mode

Front Ch (both ch driven)

200 W per channel (4 Ω), 1 kHz, 30% THD

Total RMS stereo mode power 400 W

#### Tuner, terminals section

**Preset memory**

FM 30 stations  
AM 15 stations

**Frequency modulation (FM)**

Frequency range 87.50 MHz to 108.00 MHz (50 kHz step)

Antenna terminals 75 Ω (unbalanced)

**Amplitude modulation (AM)**

Frequency range 522 kHz to 1629 kHz (9 kHz step)  
520 kHz to 1630 kHz (10 kHz step)

#### AUX

Audio input Pin jack (1 system)

#### Disc section

**Disc played (8 cm or 12 cm)**

CD, CD-R/RW (CD-DA, MP3\*)

\* MPEG-1 Layer 3

**Pick up**

Wavelength 790 nm (CD)

**NORSK**

Belgelengde 790 nm (CD)

Laserstyrke Ingen farlig stråling sendes ut

#### USB section

#### USB port

USB standard USB 2.0 full speed

Media file format support MP3 (\*.mp3)

USB device file system FAT12, FAT16, FAT32

### Bluetooth® section

**Version** Bluetooth® Ver. 2.1 + EDR

#### Class

Class 2

**Supported profiles** A2DP, AVRCP, SPP

**Operating frequency** 2.4 GHz band, FH-SS

**Operation distance** 10 m line of sight

#### Speaker section

**Speaker unit(s)**

Woofer 16 cm cone type

Tweeter 6 cm cone type

**Impedance** 4 Ω

**Dimensions (W x H x D)** 200 mm x 334 mm x 233 mm

**Mass** 3.3 kg

#### General

**Power supply** AC 220 V to 240 V, 50 Hz

**Power consumption** 60 W

**Dimensions (W x H x D)** 348 mm x 193 mm x 251 mm

**Mass** 2.5 kg

**Operating temperature range** 0°C to +40°C

**Operating humidity range** 35% to 80% RH (no condensation)

**Power consumption in standby mode (approximate)** 0.5 W

**Power consumption in standby mode (approximate)** (With “BLUETOOTH STANDBY” set to “ON”) 0.6 W

#### Note:

- Specifications are subject to change without notice.
- Mass and dimensions are approximate.
- Total harmonic distortion is measured by the digital spectrum analyzer.

#### Note on disc

- This system can play CD-R/RW with CD-DA or MP3 format content.
- Before playback, finalise the disc on the device it was recorded on.
- Some CD-R/RW cannot be played because of the condition of the recording.

#### Note on USB device

- This system does not guarantee connection with all USB devices.
- This system supports USB 2.0 full speed.
- This system can support USB devices of up to 32 GB.
- Only FAT 12/16/32 file system is supported.

#### Note on MP3 file

- Files are defined as tracks and folders are defined as albums.
- Tracks must have the extension “.mp3” or “.MP3”.
- Tracks will not necessarily be played in the order you recorded them.
- Some files can fail to work because of the sector size.

#### MP3 file on disc

- This system can access up to:
  - 255 albums (including root folder)
  - 999 tracks
  - 20 sessions
- Disc must conform to ISO9660 level 1 or 2 (except for extended formats).

#### MP3 file on USB device

- This system can access up to:
  - 800 albums (including root folder)
  - 8000 tracks
  - 999 tracks in one album



#### Declaration of Conformity (DoC)

Hereby, “*Panasonic Corporation*” declares that this product is in compliance with the essential requirements and other relevant provisions of Directive 1999/5/EC.

Customers can download a copy of the original DoC on our R&TTE products from our DoC server: <http://www.doc.panasonic.de>

Contact to Authorised Representative: Panasonic Marketing Europe GmbH, Panasonic Testing Centre, Winsbergring 15, 22525 Hamburg, Germany

This product is intended for general consumer. (Category 3)

#### Magyar

#### Megfelelősségi Nyilatkozat (DoC)

Ezennel a, “*Panasonic Corporation*” kijelenti, hogy a jelen termék megfelel az 1999/5/EK Irányelv létföntosságú követelményeit és más vonatkozó rendelkezéseit.

A vásárlók lehetőthetik az R&TTE termékek eredeti DoC másolatát a DoC szerverünkről: <http://www.doc.panasonic.de>

Forduljon a hivatalos márkaképviselőhez: Panasonic Marketing Europe GmbH, Panasonic Testing Centre, Winsbergring 15, 22525 Hamburg, Németország

A termékét általános fogyasztóknak szánták. (3-as kategória)

#### Slovensky

#### Vyhlasenie o zhode (DoC)

“*Panasonic Corporation*” týmto prehlasuje, že tento výrobok je v zhode so základnými požiadavkami a ďalšími príslušnými ustanoveniami smernice 1999/5/ES.

Zákazníci si môžu stiahnuť kópiu pôvodného DoC na naše R&TTE výrobky z nášho servera DoC: <http://www.doc.panasonic.de>

Kontakt na splnomocneného zástupcu: Panasonic Marketing Europe GmbH, Panasonic Testing Centre, Winsbergring 15, 22525 Hamburg, Nemecko

Tento produkt je určený pre všeobecného spotrebiteľa. (Kategorija 3)

#### Eesti keel

#### Vastavusdeklaratsioon (DoC)

“*Panasonic Corporation*” kinnitab käesolevaga, et see toode on vastavusse põhiliste nõuete ja muude direktiivi 1999/5/EÜ asjakohaste sätetega.

Kliendid saavad koopia meie R&TTE toodetele kehtiva originaalvastavusdeklaratsiooni koopია alla laadida meie DoC serverist: <http://www.doc.panasonic.de>

Ühenduse loomiseks võite kasutada esindaja: Panasonic Marketing Europe GmbH, Panasonic Testing Centre, Winsbergring 15, 22525 Hamburg, Germany

See toode on mõeldud tavakasutajale. (III kategooria)

### Latviski Atbilstības deklarācija (DoC)

Kompānija “*Panasonic Corporation*” ar šo paziņo, ka šis izstrādājums atbilst būtiskām prasībām un citām saistošām Direktīvas 1999/5/EK prasībām.

Pircēji var lejupielādēt oriģinālo DoC kopiju mūsu R&TTE izstrādājumos no mūsu DoC servera: <http://www.doc.panasonic.de>

Līdzsam sazināties ar pilnvaroto pārstāvi: Panasonic Marketing Europe GmbH, Panasonic Testing Centre, Winsbergring 15, 22525 Hamburg, Germany

Šis izstrādājums ir paredzēts parastam patērētājam. (3. kategorija)

#### Lietuviški Atitikties deklaracija (AD)

Bendrovė “*Panasonic Corporation*” patvirtina, kad šis gaminyis tenkina direktyvos 1999/5/EB esminius reikalavimus ir kitas taikytinas nuostatas.

Mūsų R&TTE gaminių originalios atitikties deklaracijos kopija klientai gali atsisiųsti iš mūsų AD serverio: <http://www.doc.panasonic.de>

Igaliojoto atstovo adresas: “Panasonic Marketing Europe GmbH”, Panasonic Testing Centre, Winsbergring 15, 22525 Hamburg, Vokietija

Šis gaminyis skirtas bendrajam vartojimui. (3 kategorija)

### Placement of speakers

The left and right speakers are the same. You cannot remove the net of the speakers.

#### Use only the supplied speakers.

You can cause damage to the system and decrease the sound quality if you use other speakers.

#### Note:

- Keep your speakers more than 10 mm from the main unit for ventilation.
- Put the speakers on a flat safe surface.
- These speakers do not have magnetic shielding. Do not put them near TVs, PCs or other equipment easily influenced by magnetism.
- When you play at high levels for a long period, it can cause damage to the speakers and decrease the life of the speakers.
- Decrease the volume in these conditions to prevent damage:
  - When the sound is distorted.
  - When you adjust the sound quality.

#### CAUTION!

- Use the speakers only with the recommended system. If not, you can cause damage to the amplifier and speakers and can cause a fire. Consult an approved service personnel if damage occurs or if there is a sudden apparent change in performance.**
- Do the procedures included in these instructions when you attach the speakers.**

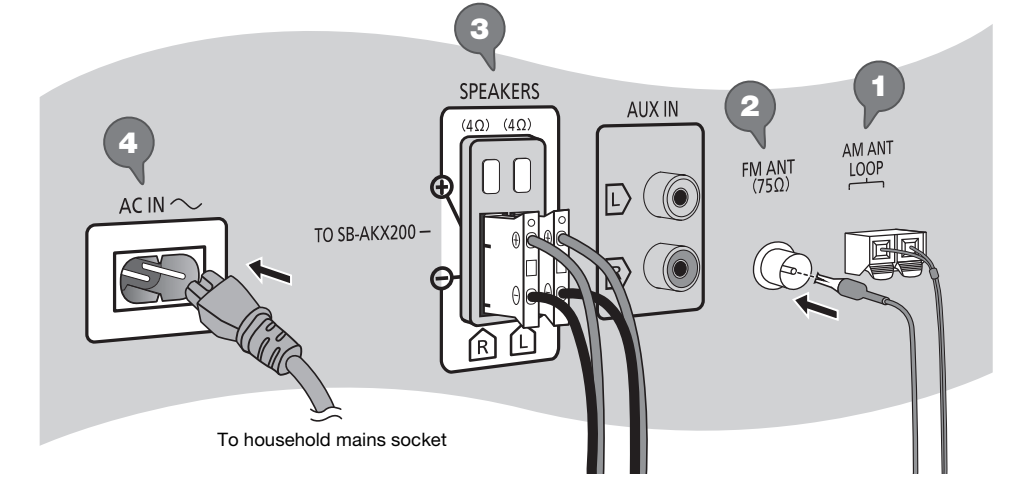
### Maintenance

To clean this system, wipe with a soft, dry cloth.

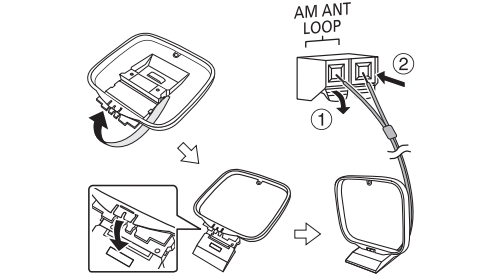
- Never use alcohol, paint thinner or benzine to clean this system.
- Before using chemically treated cloth, read the instructions that came with the cloth carefully.

### Making the connections

Connect the AC mains lead only after all the other connections have been made.



- Connect the AM loop antenna.** Stand the antenna up on its base until it clicks.

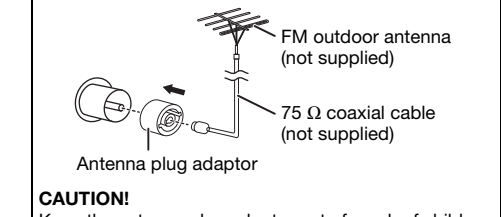


- Connect the FM indoor antenna.** Put the antenna where reception is best.

For the United Kingdom and Ireland

#### Connect the FM outdoor antenna.

Use an outdoor antenna if reception is poor.



#### CAUTION!

Keep the antenna plug adaptor out of reach of children to prevent swallowing.

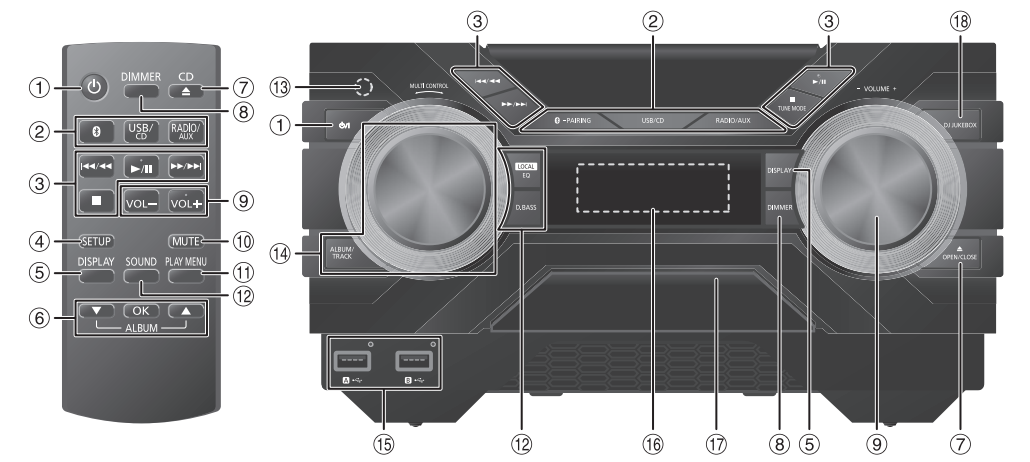
- Note:
  - Do not use the outdoor antenna during a lightning storm.
  - Disconnect the outdoor antenna if you do not use the system.

### Preparing the remote control



## Overview of controls

Do the procedures with the remote control. You can also use the buttons on the main unit if they are the same.



- Standby/on switch** [⏻], [⏻/⏮] Press to switch the unit from on to standby mode or vice versa.. In standby mode, the unit is still consuming a small amount of power.
- Select the audio source** On the main unit: To start Bluetooth® pairing, press and hold [ℹ] –PAIRING].
- Basic playback control**
- View the setup menu
- View the content information
- Select or confirm the option
- Open or close the disc tray
- Decrease the brightness of the display panel** To cancel, press the button again.
- Adjust the volume level
- Mute the sound** To cancel, press the button again. "MUTE" is also cancelled when you adjust the volume or when you switch off the system.

- View the play menu
- Select the sound effects
- Remote control sensor** Distance: Within approximately 7 m Angle: Approximately 20° up and down, 30° left and right
- Select MP3 album or track** Press [ALBUM/TRACK] to select album or track. **Browse tracks or albums** Turn [MULTI CONTROL] to browse. To start playback from the selection, press [▶/⏮].
- USB port (♻) USB status indicator
- Display panel
- Disc tray
- Select DJ jukebox

## Preparing media

### Disc

- Press [CD ▲] (main unit: [▲ OPEN/CLOSE]) to open the disc tray. Put in a disc with the label facing up. Press again to close the disc tray.
- Press [USB/CD] to select "CD".

### USB

#### Preparation

Before you connect a USB device to the system, make sure you do a backup of the data.

- Decrease the volume and connect the USB device to the USB port.** Hold the main unit when connecting or disconnecting the USB device.
- Press [USB/CD] to select "USB A" or "USB B". USB status indicator lights up in red when selected.

Note: Do not use a USB extension cable. The system cannot recognise USB device connected through a cable.

### Bluetooth®

You can connect and play an audio device wirelessly through Bluetooth®.

#### Preparation

- Switch on the Bluetooth® feature of the device and put the device near the system.
- Read the operating instructions of the device for details.

### Pairing a device

**Preparation** If this system is connected to a Bluetooth® device, disconnect it (⇒ "Disconnecting a device").

- Press [ℹ]. If "PAIRING" is shown, continue with step 4.
- Press [▶/MENU] to select "PAIRING".
- Press [▲, ▼] to select "OK? YES" and then press [OK]. "PAIRING" is shown. To cancel, select "OK? NO".
- Select "SC-AKX200" from the Bluetooth® menu of the device. If prompted for a passkey, input "0000". The device connects with this system automatically after pairing is complete. The name of the connected device is shown for a few seconds.

#### Using the main unit

- Press and hold [ℹ] –PAIRING] until "PAIRING" is shown.
- Select "SC-AKX200" from the Bluetooth® menu of the device.

Note: You can pair up to 8 devices with this system. If a 9th device is paired, the device that has not been used for the longest time will be replaced.

## Media playback

The following marks indicate the availability of the feature.

**CD**: CD-R/RW in CD-DA format or with MP3 files. **USB**: USB device with MP3 files. **BLUETOOTH**: Bluetooth® device.

### Basic playback

<b>CD</b> <b>USB</b> <b>BLUETOOTH</b>	
Play	Press [ <span>▶/⏮</span> ].
Stop	Press [ <span>■</span> ].
	<b>USB</b> The position is memorised. "RESUME" is shown. Press again to stop fully.
Pause	Press [ <span>▶/⏮</span> ]. Press again to continue playback.
Skip	Press [ <span>◀/▶</span> ] to skip track. <b>CD</b> <b>USB</b> Press [ <span>▲, ▼</span> ] to skip MP3 album.
Search	Press and hold [ <span>◀/▶</span> ] or [ <span>▶/▶</span> ].

Note: Depending on the Bluetooth® device, some operations may not work.

### Viewing available information

**CD** **USB** **BLUETOOTH**

You can view the available information, such as MP3 album and track number, on the display panel.

Press [DISPLAY].

- Maximum characters that can be shown: Approximately 32
- This system supports ver. 1.0, 1.1 and 2.3 ID3 tags.
- Text data that the system does not support can show differently.

### Play menu

**CD** **USB**

- CD** **USB**  
Press [▶/MENU]. **USB**  
Press [▶/MENU] to select "PLAYMODE".
- Press [▲, ▼] to select the setting and then press [OK].

OFF PLAYMODE	Cancel the setting.
1-TRACK <span>▶</span>	Play one selected track. Press [ <span>◀/▶</span> ] or [ <span>▶/▶</span> ] to select the track.
1-ALBUM <span>▶</span>	Play one selected MP3 album. Press [ <span>▲, ▼</span> ] to select the MP3 album.
RANDOM RND	Play all tracks randomly.
1-ALBUM RANDOM <span>▶</span>	Play all tracks in one selected MP3 album randomly. Press [ <span>▲, ▼</span> ] to select the MP3 album.
ALL REPEAT <span>▶</span>	Repeat all tracks.
1-TRACK REPEAT <span>▶</span>	Repeat 1-TRACK.
1-ALBUM REPEAT <span>▶</span>	Repeat 1-ALBUM.
RANDOM REPEAT RND <span>▶</span>	Repeat random playback.
1-ALBUM RANDOM REPEAT <span>▶</span>	Repeat 1-ALBUM RANDOM.

- During random playback, you cannot skip to tracks which have been played.
- The setting is cancelled when you open the disc tray.

### Link mode

**BLUETOOTH**

You can change the link mode to suit the connection type.

**Preparation** If this system is connected to a Bluetooth® device, disconnect it (⇒ "Disconnecting a device").

- Press [▶/MENU] to select "LINK MODE".
- Press [▲, ▼] to select the mode and then press [OK].

MODE 1	Emphasis on connectivity.
MODE 2	Emphasis on sound quality.

Note: Select "MODE 1" if the sound is interrupted.

## Radio

**Preparation**

Press [RADIO/AUX] to select "FM" or "AM".

### Manual tuning

- Press [▶/MENU] to select "TUNE MODE".
- Press [▲, ▼] to select "MANUAL" and then press [OK].
- Press [◀/▶] to tune in to the station. To tune automatically, press and hold the button until the frequency starts changing quickly. "STEREO" is shown when a stereo broadcast is being received.

*Using the main unit*

- Press [TUNE MODE] to select "MANUAL".
- Press [◀/▶] or [▶/▶] to tune in to the station.

### Memory presetting

You can preset up to 30 FM and 15 AM stations.

### Automatic presetting

- Press [▶/MENU] to select "A.PRESET".
- Press [▲, ▼] to select "LOWEST" or "CURRENT" and then press [OK].

LOWEST	Tuning begins from the lowest frequency.
CURRENT	Tuning begins from the current frequency.

The tuner presets all the stations it can receive into the channels in ascending order. To cancel, press [■].

### Manual presetting

- Press [▶/MENU] to select "TUNE MODE".
- Press [▲, ▼] to select "MANUAL" and then press [OK].
- Press [◀/▶] to tune in to the station.
- Press [OK].
- Press [▲, ▼] to select a preset number and then press [OK]. Do steps 3 through 5 again to preset more stations. The new station replaces any station that occupies the same preset number.

### Selecting a preset station

- Press [▶/MENU] to select "TUNE MODE".
- Press [▲, ▼] to select "PRESET" and then press [OK].
- Press [◀/▶] to select the preset station.

*Using the main unit*

- Press [TUNE MODE] to select "PRESET".
- Press [◀/▶] or [▶/▶] to select the preset station.

### Improving the sound quality

*When "FM" is selected*

- Press [▶/MENU] to select "FM MODE".
- Press [▲, ▼] to select "MONO" and then press [OK]. To cancel, select "STEREO". "MONO" is also cancelled when you change the frequency. *To memorise the setting* Continue with step 4 of "Manual presetting".

*When "AM" is selected*

- Press [▶/MENU] to select "B.PROOF".
- Press [▲, ▼] to select the setting that provides the best reception and then press [OK].

### Checking the signal status

*When "FM" is selected* <sup>[For Australia and New Zealand](#)</sup> Press [DISPLAY].

<sup>[For Australia](#)</sup> Press [▶/MENU] to select "FM STATUS" and then press [OK].

FM - - - -	The FM signal is in monoaural. The system is not tuned in to a station.
FM ST	The FM signal is in stereo.
FM MONO	"MONO" is selected as the "FM MODE".

### RDS broadcasting

<sup>[Except for Australia and New Zealand](#)</sup>

This system can show the text data transmitted by the radio data system (RDS) available in some areas.

PS	Programme service
PTY	Programme type
FREQ	Frequency

Note: RDS may not be available if reception is poor.

### AM allocation setting

*By main unit only*

This system can also receive AM broadcasts allocated in 10 kHz steps.

- Press [RADIO/AUX] to select "FM" or "AM".
- Press and hold [RADIO/AUX].

After a few seconds, the display panel shows the current minimum radio frequency. Release the button when the minimum frequency changes.

- To go back to the initial setting, do the above steps again.
- Preset frequencies are erased after you change the setting.

## Sound effects

*Preset EQ*

- Press [SOUND] (main unit: [LOCAL EQ]) to select "PRESET EQ".
- Press [▲, ▼] to select the desired preset EQ setting and then press [OK]. Or turn [MULTI CONTROL] to select the desired preset EQ setting.

*Manual EQ*

- Press [SOUND] (main unit: [LOCAL EQ]) to select "MANUAL EQ".
- Press [▲, ▼] to select the sound effect. Or turn [MULTI CONTROL] to select the sound effect.
- Press [◀/▶] or [▶/▶] to select the setting and then press [OK].

*D.Bass*

- Press [SOUND] to select "D.BASS" and then press [▲, ▼] to select "D.BASS LEVEL" or "D.BASS BEAT". Or press [D.BASS] on the main unit to select "D.BASS LEVEL" or "D.BASS BEAT". To cancel, select "OFF D.BASS".
- Press [◀/▶] or [▶/▶] to select the setting and then press [OK]. Or turn [MULTI CONTROL] to select the setting.

### DJ jukebox

**USB**

You can use DJ jukebox to add cross-fading effect between songs. You can also use additional features with the "Panasonic MAX Juke" app (⇒ below).

- Press [▶/MENU] to select "JUKEBOX".
- Press [▲, ▼] to select the setting and then press [OK].

*Using the main unit*

Press [DJ JUKEBOX] to select the setting.

OFF CROSSFADE	Cancel cross-fading.
ON CROSSFADE	Add cross-fading.
OFF	Switch off DJ jukebox.

### Changing the repeat setting

- Press [▶/MENU] to select "PLAYMODE".
- Press [▲, ▼] to select the setting and then press [OK].

*Using the main unit*

In the stop mode, turn [MULTI CONTROL] to select the setting.

RANDOM REPEAT RND <span>▶</span>	Repeat random playback.
ALL TITLE REPEAT <span>▶</span>	Repeat all tracks.

Note: DJ jukebox is switched off when you switch off the system or change to another source.

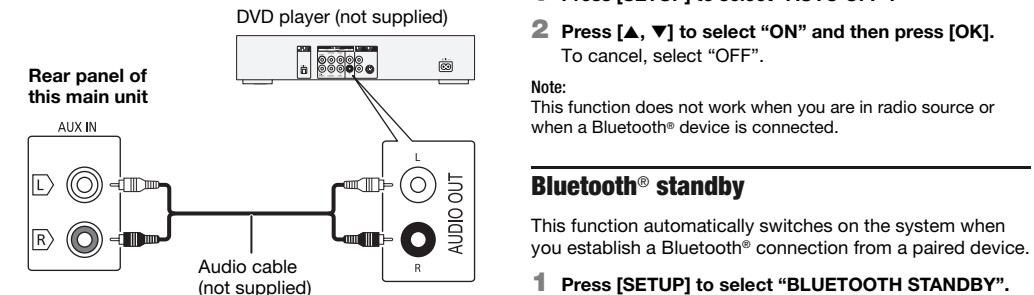
**Using the "Panasonic MAX Juke" app** You can download and install the free Android™ app "Panasonic MAX Juke" on Google Play™ for additional features, such as to request song playback from multiple devices simultaneously.

## External equipment

You can connect a VCR, DVD player etc. and listen to the audio through this system.

**Preparation**

- Disconnect the AC mains lead.
- Switch off all equipment and read the appropriate operating instructions.



- Connect the external equipment.
- Press [RADIO/AUX] to select "AUX".
- Play the external equipment.
- To adjust the input level*
  - Press [▶/MENU] to select "INPUT LEVEL".
  - Press [▲, ▼] to select "NORMAL" or "HIGH" and then press [OK].

Note:

- Select "NORMAL" if the sound is distorted during "HIGH" input level.
- Components and cables are sold separately.
- If you want to connect equipment other than those described, refer to the audio dealer.
- Sound distortion can occur when you use an adaptor.

## Clock and timers

### Setting the clock

This is a 24-hour clock.

- Press [SETUP] to select "CLOCK".
  - Press [▲, ▼] to set the time and then press [OK].
- To check the time*
- Press [SETUP] to select "CLOCK" and then press [OK]. In standby mode, press [DISPLAY].

Note: Reset the clock regularly to maintain accuracy.

### Sleep timer

The sleep timer switches off the system after the set time.

- Press [SETUP] to select "SLEEP".
- Press [▲, ▼] to select the setting (in minutes) and then press [OK]. To cancel, select "OFF".

SLEEP 30	↔	SLEEP 60	↔	SLEEP 90	↔	SLEEP 120
		OFF				

Note:

- The remaining time is always shown on the display. The display changes temporarily when you perform other operations.
- The play timer and sleep timer can be used together.
- The sleep timer always comes first. Be sure not to set an overlap of timers.

### Play timer

(Except for Bluetooth® and AUX source)

You can set the timer to come on at a certain time to wake you up.

**Preparation**

Set the clock.

- Press [SETUP] to select "TIMER ADJ".
- Press [▲, ▼] to set start time and then press [OK].
- Do step 2 again to set the end time.
- Press [▲, ▼] to select the source you want to play and then press [OK].

*To start the timer*

- Press [SETUP] to select "TIMER SET".
- Press [▲, ▼] to select "PLAY ON" and then press [OK]. "⊘" is shown. To cancel, select "PLAY OFF". The system must be SWITCHED OFF for the timer to operate.

*To check the setting* Press [SETUP] to select "TIMER ADJ." and then press [OK]. In standby mode, press [DISPLAY] two times.

Note:

- The timer starts at a low volume and increases gradually to the preset level.
- The timer comes on at the set time every day if the timer is on.
- If you switch off the system and then switch on again while a timer is in operation, the timer will not stop at the end time.

## Others

### Auto off

This system automatically switches off when you do not use it for approximately 20 minutes.

- Press [SETUP] to select "AUTO OFF".
- Press [▲, ▼] to select "ON" and then press [OK]. To cancel, select "OFF".

Note: This function does not work when you are in radio source or when a Bluetooth® device is connected.

### Bluetooth® standby

This function automatically switches on the system when you establish a Bluetooth® connection from a paired device.

- Press [SETUP] to select "BLUETOOTH STANDBY".
- Press [▲, ▼] to select "ON" and then press [OK]. To cancel, select "OFF".

Note: Some devices may take longer to respond. If you are connected to a Bluetooth® device before switching off the system, wait for a minimum of 5 seconds before connecting to this system from your Bluetooth® device again.

### Software version

You can check the software version of the system.

- Press [SETUP] to select "SW VER." and then press [OK]. The software version is shown.
- Press [OK] again to exit.

## Troubleshooting

Before requesting service, make the following checks. If you are in doubt about some of the check points, or if the solutions indicated do not solve the problem, consult your dealer for instructions.

### Common problems

**The unit does not work.**

- The safety device has been activated. Do the following:
  - Press [⏻] on the main unit to switch the unit to standby mode. If the unit does not switch to standby mode, – Press and hold the button for a minimum of 10 seconds. Or,
  - Disconnect the AC mains lead and then connect it again.
- Press [⏻] again to switch on the unit. If the problem persists, consult your dealer.

**The display panel lights up and changes continuously in standby mode.**

- Press and hold [■] on the main unit to select "DEMO OFF".

**No operations can be done with the remote control.**

- Examine that the battery is installed correctly.

**Sound is distorted or no sound.**

- Adjust the volume of the system.
- Switch off the system, determine and correct the cause, and then switch on again. It can be caused by straining of the speakers through excessive volume or power, and when using the system in a hot environment.

**A humming sound can be heard during playback.**

- An AC mains lead or fluorescent light is near the cables. Keep other appliances and cords away from the cables of this system.

**The sound level reduces.**

- The protection circuit has been activated due to the continuous use at high volume output. This is to protect the system and maintain the sound quality.

### Disc

**Display not shown correctly. Playback does not start.**

- You have not put in the disc correctly. Put it in correctly.
- Disc is dirty. Clean the disc.
- Replace the disc if it is scratched, warped, or non-standard.
- There is condensation. Let the system dry for 1 to 2 hours.

**The total number of tracks displayed is incorrect.**

**Distorted sound is heard.**

- You put in a disc that the system cannot play. Change to a playable disc.
- You put in a disc that has not been finalised.

### USB

**The USB device or the contents in it cannot be read.**

- The format of the USB device or the contents in it are not compatible with the system.
- USB devices with storage capacity of more than 32 GB cannot work in some conditions.

**Slow operation of the USB device.**

- Large content size or large memory USB device takes longer time to read.

### Bluetooth®

**Pairing cannot be done.**

- Check the Bluetooth® device condition.
- The device is out of the 10 m communication range. Move the device nearer to the system.

**The device cannot be connected.**

- The pairing of the device was unsuccessful. Do pairing again.
- The pairing of the device has been replaced. Do pairing again.
- This system might be connected to a different device. Disconnect the other device and try pairing the device again.
- The system may have a problem. Switch off the system and then switch on again.

**The device is connected but audio cannot be heard through the system.**

- For some built-in Bluetooth® devices, you have to set the audio output to "SC-AKX200" manually. Read the operating instructions of the device for details.

**Sound from the device is interrupted.**

- The device is out of the 10 m communication range. Move the device nearer to the system.
- Remove any obstacle between the system and the device.
- Other devices that use the 2.4 GHz frequency band (wireless router, microwaves, cordless phones, etc.) are interfering. Move the device nearer to the system and distance it