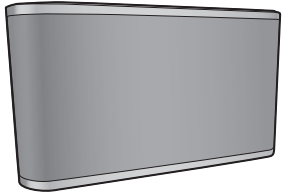
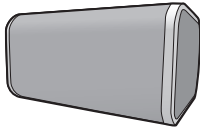


Panasonic®

SC-ALL8



SC-ALL3



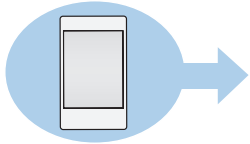
Owner's Manual <Setup>

Wireless Speaker System

Model No. SC-ALL8
SC-ALL3

Thank you for purchasing this product.
Please read these instructions carefully before using this product, and save this manual for future use.

This manual contains quick set up information.
More detailed instructions are contained in "Owner's Manual <Full version>" which can be downloaded at the links below.



<http://panasonic.jp/support/global/cs/audio/oi/>

Model number suffix "EB" denotes UK model.

Manufactured by: Panasonic Corporation
Kadoma, Osaka, Japan
Importer for Europe: Panasonic Marketing Europe GmbH
Panasonic Testing Centre
Winsbergring 15, 22525 Hamburg, Germany

Panasonic Corporation
Web Site: <http://panasonic.net>



© Panasonic Corporation 2014



SQT0189
F0314BM0

SC-ALL8

CE 0560

SC-ALL3

CE 0197

Declaration of Conformity (DoC)

Hereby, "Panasonic Corporation" declares that this product is in compliance with the essential requirements and other relevant provisions of Directive 1999/5/EC.

Customers can download a copy of the original DoC to our R&TTE products from our DoC server:
<http://www.doc.panasonic.de>

Contact to Authorised Representative:
Panasonic Marketing Europe GmbH, Panasonic Testing Centre, Winsbergring 15, 22525 Hamburg, Germany

This product is intended to be used in the following countries.
GB, DE, AT, BE, DK, SE, FR, IT, ES, NL, FI, GR, PT, PL, HU, CZ, SK, EE, LV, LT, SI, BG, RO, MT, CY, IE, LU, HR, NO, CH, IS, LI, TR

This product is intended for general consumer. (Category 3)
The WLAN feature of this product shall exclusively be used inside buildings.
This product on purpose to connect to access point of 2.4 GHz or 5 GHz WLAN.

Precautions

WARNING

Unit

- To reduce the risk of fire, electric shock or product damage,
 - Do not expose this unit to rain, moisture, dripping or splashing.
 - Do not place objects filled with liquids, such as vases, on this unit.
 - Use only the recommended accessories.
 - Do not remove covers.
 - Do not repair this unit by yourself. Refer servicing to qualified service personnel.
 - Do not let metal objects fall inside this unit.
 - Do not place heavy items on this unit.

AC mains lead

- To reduce the risk of fire, electric shock or product damage,
 - Ensure that the power supply voltage corresponds to the voltage printed on this unit.
 - Insert the mains plug fully into the socket outlet.
 - Do not pull, bend, or place heavy items on the lead.
 - Do not handle the plug with wet hands.
 - Hold onto the mains plug body when disconnecting the plug.
 - Do not use a damaged mains plug or socket outlet.
- The mains plug is the disconnecting device.
Install this unit so that the mains plug can be unplugged from the socket outlet immediately.

SC-ALL8 Attachment

- To prevent injury, this apparatus must be securely attached to the wall in accordance with the installation instructions.
- Keep the safety holder, the screws, and the wall mount brackets out of reach of children to prevent swallowing.

CAUTION

Unit

- Do not place sources of naked flames, such as lighted candles, on this unit.
- This unit may receive radio interference caused by mobile telephones during use. If such interference occurs, please increase separation between this unit and the mobile telephone.
- This unit is intended for use in moderate climates.

Placement

- Place this unit on an even surface.
- To reduce the risk of fire, electric shock or product damage,
 - Do not install or place this unit in a bookcase, built-in cabinet or in another confined space. Ensure this unit is well ventilated.
 - Do not obstruct this unit's ventilation openings with newspapers, tablecloths, curtains, and similar items.
 - Do not expose this unit to direct sunlight, high temperatures, high humidity, and excessive vibration.

AC mains lead

- Do not use AC mains lead with other equipment.

Caution for AC Mains Lead

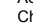
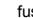
(For the AC mains plug of three pins)

For your safety, please read the following text carefully.

This appliance is supplied with a moulded three pin mains plug for your safety and convenience.

A 5-ampere fuse is fitted in this plug.

Should the fuse need to be replaced please ensure that the replacement fuse has a rating of 5-ampere and that it is approved by ASTA or BSI to BS1362.

Check for the ASTA mark  or the BSI mark  on the body of the fuse.

If the plug contains a removable fuse cover you must ensure that it is refitted when the fuse is replaced.

If you lose the fuse cover the plug must not be used until a replacement cover is obtained.

A replacement fuse cover can be purchased from your local dealer.

Before use

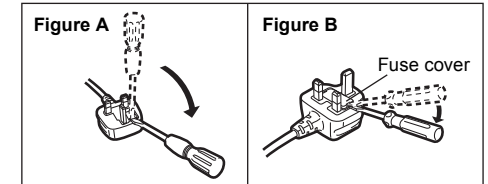
Remove the connector cover.

How to replace the fuse

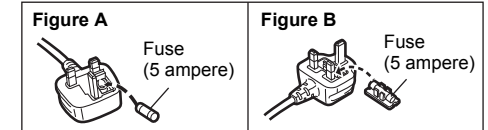
The location of the fuse differ according to the type of AC mains plug (figures A and B). Confirm the AC mains plug fitted and follow the instructions below.

Illustrations may differ from actual AC mains plug.

- Open the fuse cover with a screwdriver.



- Replace the fuse and close or attach the fuse cover.



SC-ALL8 Product Identification Marking is located on the bottom of the unit.

SC-ALL3 Product Identification Marking is located on the rear of the unit.



This symbol indicates separate collection of waste electrical and electronic equipment.
More detailed information is contained in "Owner's Manual <Full version>".

NORSK

ADVARSEL

Produkt

- For å redusere faren for brann, elektrisk støt eller skade på apparatet:
 - Utsett ikke produktet for regn, fukt, drypping eller sprut.
 - Ikke plasser objekter som er fylt med væske, som vaser, på apparatet.
 - Bruk kun anbefalt tilbehør.
 - Fjern ikke deksler.
 - Reparer ikke denne enheten selv, overlatt service til kvalifisert servicepersonell.

Vekselstrømnett

- Nettstøpselet er trukket ut fra denne enheten.
Installer denne enheten slik at nettstøpselet umiddelbart kan trekkes fra stikkontakten.

FORSIKTIG

Produkt

- Plasser ikke åpen ild, slik som levende lys, oppå apparatet.
- Dette apparatet er beregnet for bruk under moderate klimaforhold.

Plassering

- For å redusere faren for brann, elektrisk støt eller skade på apparatet:
 - Ikke plasser apparatet i en bokhylle, et innebygget kabinett eller et annet lukket sted. Pass på at produktet er godt ventilert.
 - Apparatets ventilasjonsåpninger må ikke dekkes til med aviser, duker, gardiner eller lignende.

Wi-Fi® connection guide

Checking accessories

- 1 AC mains lead

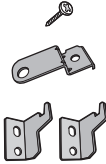
For the United Kingdom and Ireland

For Continental Europe

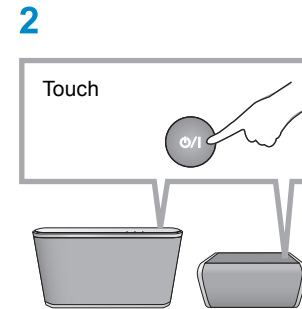
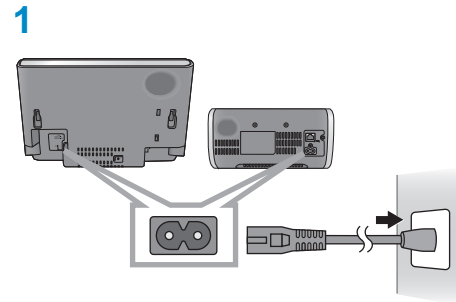


SC-ALL8

- 1 Screw
- 1 Safety holder
- 2 Wall mount brackets



Turning the unit on



The Wi-Fi CERTIFIED Logo is a certification mark of the Wi-Fi Alliance. The Wi-Fi Protected Setup Mark is a mark of the Wi-Fi Alliance. "Wi-Fi", "Wi-Fi Protected Setup", "WPA" and "WPA2" are marks or registered marks of the Wi-Fi Alliance.

Google Play and Android are trademarks of Google Inc.

App Store is a service mark of Apple Inc.

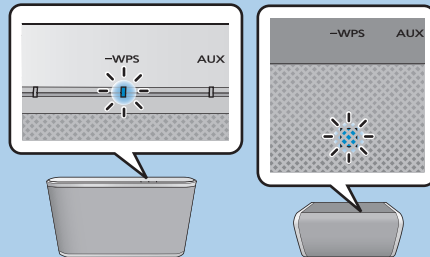
All other trademarks are trademarks of their respective owners.

Setting up the wireless network

- The following steps are based on a smartphone.
- Do not connect a LAN cable.
- You can also connect this unit to the network using a WPS supported router or a LAN cable. For details, refer to "Owner's Manual <Full version>".

1 Go to Wi-Fi settings.

- Proceed to the next step after the network indicator changes from blinking in blue and red to blinking in blue.



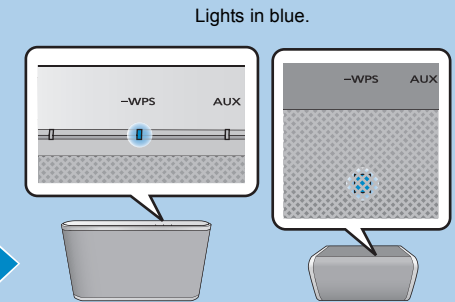
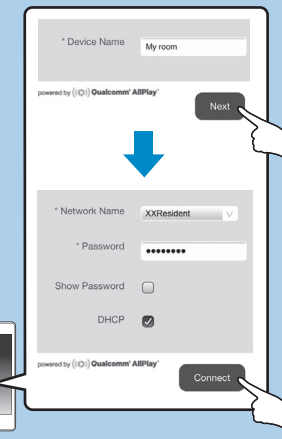
2 Select "AllPlay XXXXXX_AJ" to connect to this unit.

iOS : The settings page will be automatically displayed in the Internet browser.

Android : Once you open the Internet browser, the settings page will be displayed.



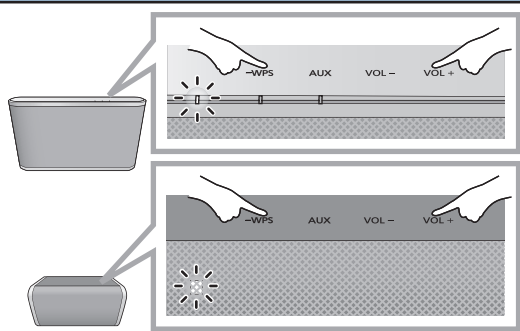
3 Input the required details on the settings page.



Turn the network standby on.

- The unit will turn on automatically from standby mode when selected as the output speakers.
- The power consumption in standby mode will increase.

Touch and hold both [-WPS] and [VOL +] until the mode indicator (amber) blinks once.



Enjoying music

Download the app "Panasonic Music Streaming" (free of charge), etc.

iOS : App Store

Android : Google Play™



- More apps are available. For details, visit www.panasonic.com/global/consumer/homeav/allseries/service (This site is in English only.)

