



## PROJECT

**Hoteel Claris 5 \* GL**

## CLIENT

**5\* Grand Luxe hotel**

## MARKET / TIME

**Spain / 2012**

## APPLICATION

**Hotels**

## RANGE

**VRF**

### Hotel refurbishment

System: ECOi 23u. outdoor (2 pipe and heat recovery)    Installed capacity: 761 kW    Engineering: RF2    Installer: IJT    Installation year: 2012

### Background

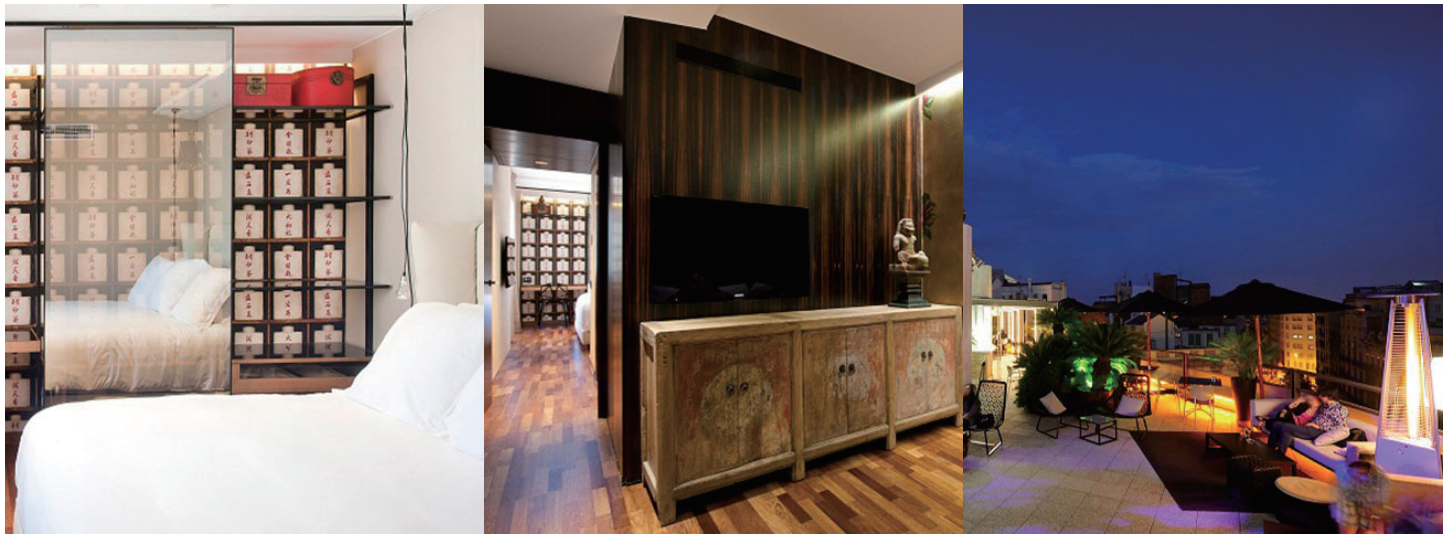
Housed in a building built in the year 1883, neoclassical style, was one of the first palaces that were built in one corner of the District of l'Eixample in Barcelona. The 5\* Grand Luxe hotel, which opened its doors in 1992, integrates the façade of the old palace with a modern glass structure. In 2012 the building replaced its existing air-conditioning system with Panasonic's ECOi system. The 120-room hotel also has a gallery of Egyptian art from the collection of Jordi Clos.

### Challenge of the project

The challenge presented by this project was to replace an existing VRF system without affecting the normal activity of hotel. The main objectives were to reduce running costs, provide a more comfortable atmosphere with more precise temperature control, and quieter operation for guests. In addition, the property required excellent after-sales service, 24 hours a day, 365 days a year.

### The solution

The heat recovery system is ideal for a hotel of this category. A smart combination of 2 pipe and heat recovery units significantly reduced the investment costs, without affecting the requirements of comfort. Thanks to the modularity of the system ECOi, the installation was performed plant-by-plant without affecting the normal activity of hotel.



**Control**  
The integrated system control was provided by the KNX/EIB interface and in addition, a central touch panel with web server (CZ-256ESMC2) was installed for centralized system control

**INSTALLED SOLUTION**      ECOi Range (Electric VRF)

**Outdoor Units:**    ECOi Heat Recovery: 12 x U-14MF1E8      ECOi 2 Pipe: 1 x U-8ME1E8; 5 x U-10ME1E8; 2 x U-14ME1E8      Mini ECOi: 3 x U-6LE1E8

**Indoor Units**

Duct Type MM: 3 x S-22MM1E51; 60 x S-28MM1E51; 99 x S-36MM1E5; 27 x S-45MM1E5

Hi Static Pressure ME: 1 x S-73ME1E5; 6 x S-106ME1E5; 5 x S-140ME1E5; 1 x S-224ME1E5; 5 x S-280ME1E5

Ducted Standard MF: 1 x S-56MF1E5; 1 x S-140MF1E5

Ceiling MT: 3 x S-45MT1E5

**Controls:**    Hard Wired Wall Controller: 233 x CZ-RTC2      Centralized Touch Screen: 1 x CZ-256ESMC2.

**Connectivity and BMS:**      Interface KNX/EIB: 2 x PAW-AC-KNX-128.

## List of Products

- Panasonic ECOi Range (Electric VRF)
- Panasonic ECOi Heat Recovery U-14MF1E8
- Panasonic ECOi 2 Pipe U-8ME1E8;U-10ME1E8;U-14ME1E8;
- Panasonic Mini ECOi U-6LE1E8
- Panasonic Duct Type MM: S-22MM1E51; S-28MM1E51; S-36MM1E5; S-45MM1E5
- Panasonic Hi Static Pressure ME: S-73ME1E5; S-106ME1E5; S-140ME1E5; S-224ME1E5; S-280ME1E5
- Panasonic Ducted Standard MF: S-56MF1E5; S-140MF1E5
- Panasonic Ceiling MT: S-45MT1E5
- Panasonic Hard Wired Wall Controller: CZ-RTC2
- Panasonic Centralized Touch Screen: CZ-256ESMC2
- Panasonic Interface KNX/EIB: PAW-AC-KNX-128

## Panasonic Air-conditioning Malaysia (PACMY) Customer Call Centre

A Division of Panasonic Malaysia Sdn. Bhd.  
Lot 10, Jalan 13/2, 46200 Petaling Jaya, Selangor Darul Ehsan  
Tel: +603-7932 4189 Fax: +603-7932 4181  
Email: aircon.cs@my.panasonic.com  
Website: www.panasonic.com/my



The applicable products and solutions may differ in markets.  
Please contact us for the further information.