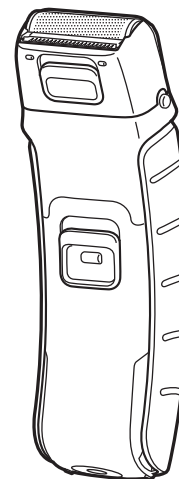


**Panasonic<sup>®</sup>**

Operating Instructions  
(Household) Rechargeable body shaver

Model No. ER-GY50/ER-GY30



Before operating this unit, please read these instructions completely and save them for future use.

**Thank you for choosing a Panasonic shaver. Please read all instructions before use.**

## Important

### ► Before use

This WET/DRY body shaver can be used for wet shaving with soap lather or for dry shaving. Use the watertight shaver in the shower and clean it in water. The following is the symbol of Wet body shaver. The symbol means that the hand-held part may be used in a bath or shower.



Our research has shown that you can enjoy closer and smoother shaves with the sharp blades. And our pop-up trimmer will be able to cut longer hairs with ease.

### ► Using the shaver

**Caution** - The outer foil is very thin and can be damaged if not used correctly.

- Check that the outer foil is not damaged before using the shaver. Do not use the shaver if the outer foil is damaged because you will cut your skin.
- Be sure to lubricate the outer foil or the blades before using the shaver. Failure to do so may cause the shaver to pull your hairs or damage to skin.
- Do not apply strong pressure to the skin, repeatedly rub over the same area, hold in one spot on the skin, or apply in a jabbing motion when using the shaver. Doing so may cause damage to skin, inflammation or increased pain.
- Do not use for facial shaving.

### ► Charging the shaver

- Dry the shaver completely before charging it.
- Do not attempt to use a charger other than the included one which is specifically designed for this model. Use only the

included charger.

- Keep the charger away from water and handle it only with dry hands.
- The shaver may become warm during use and charging. However, this is not a malfunction.
- Hold the adaptor when disconnecting it from the household outlet. If you tug on the supply cord, you may damage it. The supply cord cannot be replaced. If the cord is damaged, the appliance should be scrapped.
- Do not charge the shaver where the temperature is below 5 °C or above 35 °C, where it will be exposed to direct sunlight or a heat source, or where there is a lot of moisture.
- Charge the shaver for at least 16 hours when charging it for the first time or when it has not been used for more than 6 months.

### ► Cleaning the shaver

- When you clean the shaver with water, do not use salt water or hot water. Wipe it with a cloth dampened with soapy water. Do not use thinner, benzene or alcohol.

### ► Storing the shaver

- This appliance is not intended for use by persons (including children) with reduced physical, sensory or mental capabilities, or lack of experience and knowledge, unless they have been given supervision or instruction concerning use of the appliance by a person responsible for their safety. Children should be supervised to ensure that they do not play with the appliance.
- Store the charger in a dry area where it is protected from damage.
- Do not disassemble the appliance. Take it to a qualified service person when service or repair is required.

## SPECIFICATIONS

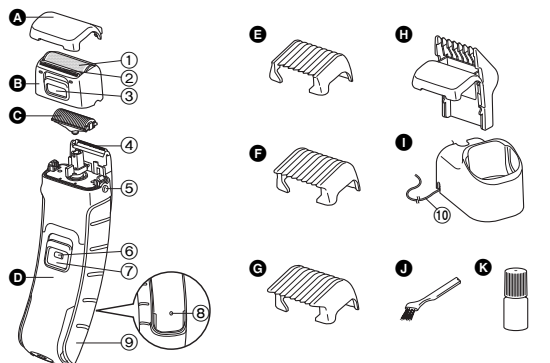
Power source: See the name plate on the product.  
(Automatic voltage conversion)

Motor voltage: 1.2 V DC

Charging time: 8 hours

This product is intended for household use only.

## Parts identification



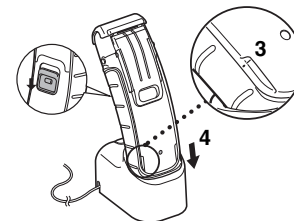
- A** Protective cap
- B** Foil frame
  - 1** Outer foil
  - 2** Pop-up trimmer
  - 3** Pop-up trimmer switch
- C** Inner blade
- D** Main body
  - 4** Trimmer for beards (for ER-GY50 only)
  - 5** Foil frame release buttons
  - 6** Switch lock button
- 7** OFF/ON switch
- 8** Charge indicator lamp
- 9** Handle
- E** 3 mm comb attachment
- F** 6 mm comb attachment
- G** 9 mm comb attachment
- H** Comb attachment for beards (for ER-GY50 only)
- I** Charger (RE9-48)
- 10** Power cord
- J** Cleaning brush
- K** Oil

**Charge**

## Charging the shaver

Place the shaver on the charger to charge it.  
You can charge the shaver in 8 hours.

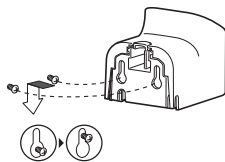
- 1** Turn off the shaver.
- 2** Plug the power cord into a household outlet and place the charger on a flat surface.
- 3** Ensure that the marks of the handle and the main body are aligned with each other.
- 4** Insert it in the charger as illustrated.



- The charge indicator lamp lights and stays on until the shaver is removed from the charger.
- A full charge will supply enough power for approx. 4 shaves of 7 minutes each.

### ► Fixing the charger to the wall

1. Attach two screws to the wall as illustrated.
  - Screws are sold separately.
2. Hook the charger onto these screws.
3. Plug the power cord into a household outlet.



**Shave**

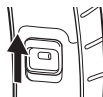
## Using the shaver

Trim your hair using the pop-up trimmer if it is longer than 5 mm.

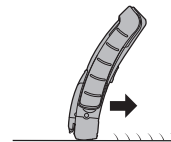
### Wet/foam shaving

Shaving with soap lather makes the skin slippery for a closer shave. Do not use shaving cream, skin cream or skin lotion as it will clog the blades.

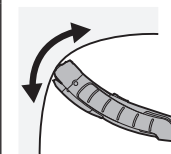
- 1 Wet your skin and remove the protective cap.**
- 2 Wet the outer foil and place a small quantity of liquid body soap on the outer foil.**
- 3 While pressing the switch lock button, slide the OFF/ON switch upwards.**
- 4 Press gently so that the whole of the outer foil is in close contact with the skin.**



- 5 Apply the shaver to your skin and press gently while moving it slowly against the direction the hair grows.**



#### Underarm



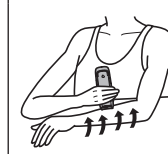
Hold your arm up enough to stretch the skin and shave back and forth.

#### Legs



Move the shaver from ankle to knee.

#### Arms



Move the shaver from outside to inside.

#### For the best results

Pull the skin taut where the area is prone to sagging (on the inside of the knees and elbows).

### Dry shaving

You can also shave without wetting your skin or the outer foil.

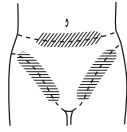
### Using the pop-up trimmer

1. Slide the pop-up trimmer switch upwards.
2. Slide the OFF/ON switch upwards.
3. Apply the shaver to your skin and press gently while moving it slowly.



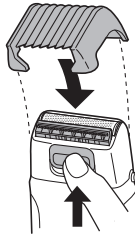
### For bikini-line

Use the pop-up trimmer for bikini-line.



### Using the comb attachments

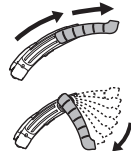
1. Select the attachment and attach it onto the shaver.
2. Slide the pop-up trimmer switch upwards.
3. Slide the OFF/ON switch upwards.
4. Apply the shaver to your skin and press gently while moving it slowly against the direction the hair grows.
  - Trim slowly and with care to avoid hairs being caught in the comb attachment.
  - Clean the shaver when it is no longer shaving well or when it is clogged.



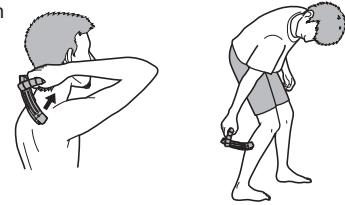
### Using the handle

#### ► Shaving hard-to-reach areas (calves, backs, etc.)

1. Turn off the shaver.
  - Handle movement will be stiff if switch is left ON.
2. Extend the handle by sliding it until it clicks.
  - Adjustable to either 37.5 mm or 75 mm.
3. Bend the handle when it is fully extended.
  - Adjustable by 15° in total of 6 steps.



4. Slide the OFF/ON switch upwards.
5. Apply the shaver to hard-to-reach areas and slide it gently.



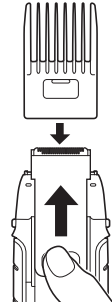
### Using the trimmer for beards **ER-GY50**

Comb your beard or sideburns before trimming them.

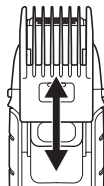
- Do not wet beard with shaving foam or similar products. A wet beard will form bunches and will make it difficult to maintain an even length.

#### ► Trimming your moustache

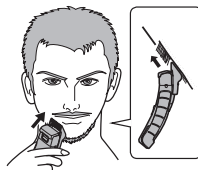
1. Attach the comb attachment for beards and slide the trimmer for beards upwards.



- Grasp the sides of the comb attachment for beards and move it to the desired trimming length.
  - Adjustable by 1.5 mm from 2.0 mm to 14.0 mm in 9 steps.

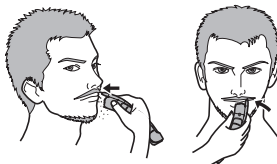


- Slide the OFF/ON switch upwards.
- Move the shaver upwards with the OFF/ON switch facing upwards as illustrated.



### ► Shaping your moustache

- Slide the trimmer for beards upwards and turn on the shaver.
- Trim around your moustache.
  - If you wish to have a rounded line, hold the shaver on its side.



### ► Shaping your sideburns

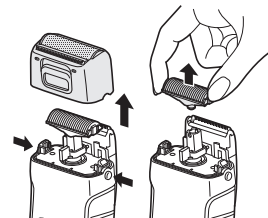
- Slide the trimmer for beards upwards and turn on the shaver.
- Cut your sideburns.



Clean

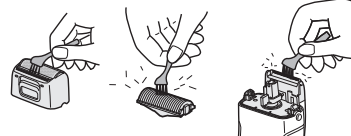
## Cleaning the shaver

- Press the foil frame release buttons to remove the foil frame.
- Remove the inner blade by grasping it firmly at both ends and pulling straight away from the shaver.
- Clean with running water.
- Wipe off any drops of water with a dry cloth.



### ► Cleaning with brush

You can also clean the shaver with the cleaning brush.

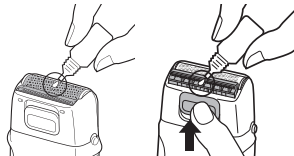


## Lubrication

Apply the oil to the outer foil, the pop-up trimmer, and the trimmer for beards before and after each use.

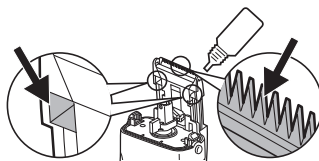
### ► Outer foil and pop-up trimmer

1. Apply a drop of oil to the outer foil.
2. Raise the pop-up trimmer and apply a drop of oil.
3. Turn on the shaver, and run it for a few seconds.



### ► Trimmer for beards **ER-GY50**

1. Remove the inner blade and slide the pop-up trimmer switch upwards.
2. Apply one or two drops of oil to the points indicated by arrows.



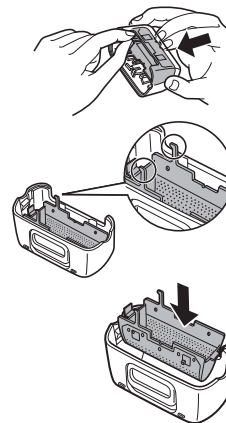
## Replacing the outer foil and the inner blade

outer foil	once every year
inner blade	once every two years

### ► Replacing the outer foil

Never remove the outer foil at any time other than when replacing it.

1. Press the foil frame release buttons to remove the foil frame.
2. Squeeze the front and the back side of the foil frame and lift up one of the two knobs on the outer foil.
3. Slip the outer foil into the frame and guide the plastic edges onto the hooks in the foil frame until it clicks into the shaver.



### ► Replacing the inner blade

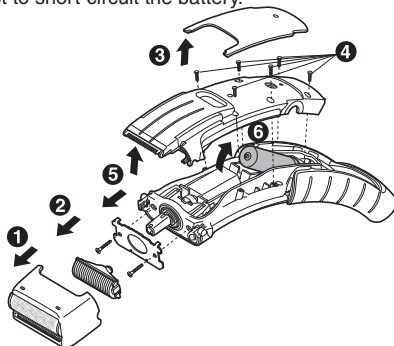
1. Press the foil frame release buttons to remove the foil frame.
2. Remove the inner blade by grasping it firmly at both ends and pulling straight away from the shaver.
3. To insert the new inner blade, hold the blade at both ends and press downward until it snaps into the shaver.

## Removing the built-in rechargeable battery

Remove the built-in rechargeable battery before disposing of the shaver. Do not dismantle or replace the battery. Otherwise you can't use the shaver again. This could cause fire or an electric shock. Replace them at an authorized service center.

Remove the battery as illustrated.

- Discharge the battery completely before removing it.
- Please take care not to short-circuit the battery.



### Important notice regarding environmental protection

The built-in rechargeable Nickel-Metal Hydride battery contains substances that may be environmentally harmful. Please remove the battery before discarding your shaver.

### For environmental protection and recycling materials

This shaver contains Nickel-Metal Hydride battery. Please make sure that the battery is disposed of at an officially designated location if there is one in your area.



**MEMO**

---

---

---

---

---

---

---

---

---

---

---

---

---

---

---

---

---

---

---

---

---

---

---

---

---

---





Panasonic Electric Works Wanbao (Guangzhou) Co., Ltd.

<http://panasonic.net>

© EN

Printed in China  
0000000000 X0000-0