

Operating Instructions
(Household) Rechargeable Shaver
Model No. ES-ST29

Contents

Safety precautions.....	2	Using the shaver.....	9
Intended use	5	Cleaning the shaver	10
Parts identification	6	Troubleshooting	12
Operation and display of the switch lock	6	Battery life	14
Before use	7	Removing the built-in rechargeable battery	14
Charging the shaver	8	Specifications	14



Thank you for purchasing this Panasonic product.

Before operating this unit, please read these instructions completely and save them for future use.

Safety precautions

To reduce the risk of injury, loss of life, electric shock, fire, and damage to property, always observe the following safety precautions.

Explanation of symbols

The following symbols are used to classify and describe the level of hazard, injury, and property damage caused when the denotation is disregarded and improper use is performed.



DANGER

Denotes a potential hazard that will result in serious injury or death.



WARNING

Denotes a potential hazard that could result in serious injury or death.



CAUTION

Denotes a hazard that could result in minor injury.

The following symbols are used to classify and describe the type of instructions to be observed.



This symbol is used to alert users to a specific operating procedure that must not be performed.



This symbol is used to alert users to a specific operating procedure that must be followed in order to operate the unit safely.



WARNING



This shaver has a built-in rechargeable battery. Do not throw into fire, apply heat, or charge, use, or leave in a high temperature environment.

- Doing so may cause overheating, ignition, or explosion.



Do not connect or disconnect the adaptor to a household outlet with a wet hand.

- Doing so may cause electric shock or injury.



Do not immerse the AC adaptor and the charging stand in water or wash with water.

- Doing so may cause electric shock or fire due to a short circuit.



Do not place the AC adaptor and the charging stand over or near water filled sink or bathtub.

- Doing so may cause electric shock or fire due to a short circuit.



Do not use anything other than the supplied AC adaptor and the charging stand. Also, do not charge any other product with the supplied AC adaptor and the charging stand.

- Doing so may cause burn or fire due to a short circuit.



Never use the appliance if the AC adaptor is damaged or if the power plug fits loosely in a household outlet.

- Doing so may cause electric shock or fire due to a short circuit.



WARNING

Do not damage, modify, or forcibly bend, pull, or twist the cord.



Also, do not place anything heavy on or pinch the cord.

- Doing so may cause electric shock or fire due to a short circuit.

Do not use in a way exceeding the rating of the household outlet or the wiring.



- Exceeding the rating by connecting too many plugs to one household outlet may cause fire due to overheating.

Do not modify or repair.



- Doing so may cause fire, electric shock, or injury.
Contact an authorized service center for repair (battery change, etc.).

Do not store within reach of children or infants. Do not let them use it.



- Putting the inner blades, the cleaning brush and/or the oil container in the mouth may cause accidents and injury.

Never disassemble except when disposing of the product.



- Doing so may cause fire, electric shock, or injury.

Always unplug the adaptor from a household outlet when cleaning.



- Failure to do so may cause electric shock or injury.

Always ensure the appliance is operated on an electric power source matched to the rated voltage indicated on the AC adaptor.



Fully insert the adaptor.

- Failure to do so may cause fire or electric shock.

Regularly clean the power plug and the appliance plug to prevent dust from accumulating.



- Failure to do so may cause fire due to insulation failure caused by humidity.
Disconnect the adaptor and wipe with a dry cloth.

Immediately stop using and remove the adaptor if there is an abnormality or malfunction.

- Using it in such conditions may cause fire, electric shock, or injury.

<Abnormality or malfunction cases>



- The main unit, adaptor or cord is deformed or abnormally hot.
- The main unit, adaptor or cord smells of burning.
- There is abnormal sound during use or charging of the main unit, adaptor or cord.
- Immediately request inspection or repair at an authorized service center.

If the oil is consumed accidentally, do not induce vomiting, drink a large amount of water, and contact a physician.



If the oil comes into contact with eyes, immediately wash thoroughly with running water, and contact a physician.

- Failure to do so may result in physical problems.

This appliance is not intended for use by persons (including children) with reduced physical, sensory or mental capabilities, or lack of experience and knowledge, unless they have been given supervision or instruction concerning use of the appliance by a person responsible for their safety. Children should be supervised to ensure that they do not play with the appliance.



- Failure to do so may cause an accident or injury.



WARNING



The supply cord cannot be replaced. If the cord is damaged, the AC adaptor should be scrapped.

- Failure to do so may cause an accident or injury.



CAUTION



Do not allow pins or trash to adhere to the power plug or the appliance plug.

- Doing so may cause electric shock or fire due to a short circuit.



Do not use excessive pressure to apply the system outer foil to your lip or other part of your face. Do not apply the system outer foil directly to blemishes or injured skin.

- Doing so may cause injury to the skin.



Do not forcefully press the system outer foils. Also, do not touch the system outer foil with fingers or nails when in use.

- Doing so may cause injury to skin or reduce the life of the system outer foil.



Do not touch the blade section (metallic section) of the inner blade.

- Doing so may cause injury to your hands.



Do not use this product for hair on head or any other part of the body.

- Doing so may cause injury to skin or reduce the life of the system outer foil.



Do not share your shaver with your family or other people.

- Doing so may result in infection or inflammation.



Do not drop or subject to shock.

- Doing so may cause injury.



Do not wrap the cord around the adaptor or the charging stand when storing.

- Doing so may cause the wire in the cord to break with the load, and may cause fire due to a short circuit.



Disconnect the adaptor from the household outlet when not charging.

- Failure to do so may cause electric shock or fire due to electrical leakage resulting from insulation deterioration.



Check the system outer foil for cracks or deformations before use.

- Failure to do so may cause injury to the skin.



Be sure to place the shaver in its carrying holder when carrying around or storing.

- Failure to do so may cause injury to skin or reduce the life of the system outer foil.



Disconnect the adaptor or the appliance plug by holding onto the adaptor or the appliance plug instead of the cord.

- Failure to do so may cause electric shock or injury.

► Disposing of the rechargeable battery

DANGER

The rechargeable battery is exclusively for use with this shaver. Do not use the battery with other products.

Do not charge the battery after it has been removed from the product.

- Do not throw into fire or apply heat.

- Do not hit, disassemble, modify, or puncture with a nail.



- Do not let the positive and negative terminals of the battery get in contact with each other through metallic objects.

- Do not carry or store the battery together with metallic jewelry such as necklaces and hairpins.

- Do not charge, use, or leave the battery where it will be exposed to high temperatures, such as under direct sunlight or near other sources of heat.

- Never peel off the tube.

- Doing so may cause overheating, ignition, or explosion.

WARNING

After removing the rechargeable battery, do not keep it within reach of children and infants.



- The battery will harm the body if accidentally swallowed. If this happens, consult a physician immediately.

If the battery fluid leaks out, take the following procedures. Do not touch the battery with your bare hands.



- The battery fluid may cause blindness if it comes in contact with your eyes.

Do not rub your eyes. Wash immediately with clean water and consult a physician.

- The battery fluid may cause inflammation or injury if it comes in contact with the skin or clothes.

Wash it off thoroughly with clean water and consult a physician.

Intended use

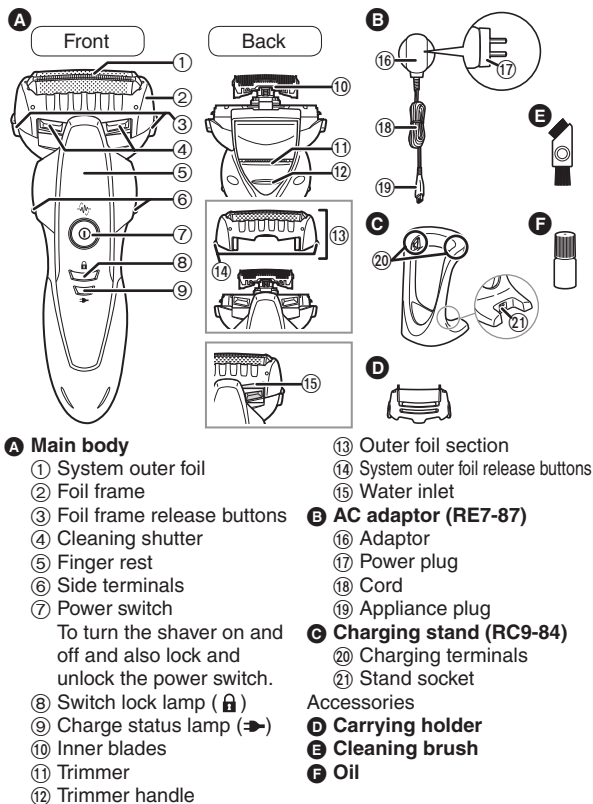
- This WET/DRY shaver can be used for wet shaving using shaving lather or for dry shaving. You can use this watertight shaver in the shower and clean with water. The following symbol means suitable for use in a bath or shower.



► Notes

- Treat yourself to wet lather shaves for at least three weeks and notice the difference. Your Panasonic WET/DRY shaver requires a little time to get used to because your skin and beard need about a month to adjust to any new shaving method.
- Keep both the inner blades inserted. If only one of the inner blades is inserted, the shaver may be damaged.
- If you clean the shaver with water, do not use salt water or hot water. Do not soak the shaver in water for a long period of time.
- Store the shaver in a place with low humidity after use.
- Do not store the shaver where it will be exposed to direct sunlight or other heat sources.
- Do not bring the system outer foil into contact with hard object. Doing so may damage the blades as they are very thin and deform easily.

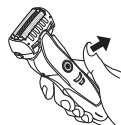
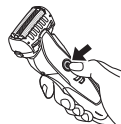
Parts identification



Operation and display of the switch lock

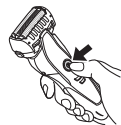
▶ Locking the power switch

1. Press the power switch once and then release.
 - The shaver starts operating.



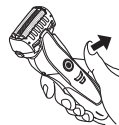
The switch lock lamp is off.

2. Press the power switch for more than 2 seconds when the shaver is operating.
 - The shaver will stop operating.



The switch lock lamp will light up.

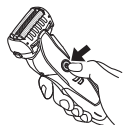
3. Release the power switch.



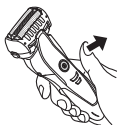
The switch lock lamp will turn off after 5 seconds.

► Unlocking the power switch

1. Press the power switch for more than 2 seconds.



2. Once the shaver starts operating, release the power switch.



The switch lock lamp will blink.

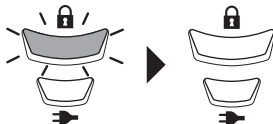
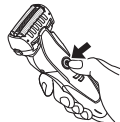


The switch lock lamp will turn off.

- The power switch cannot be unlocked when the shaver is set into the charging stand and the charging stand is turned on.

► Checking the power switch is locked

Press the power switch while it is locked.



The switch lock lamp will blink and then turn off after 5 seconds.

- You can also check this after removing the shaver from the powered charging stand.

Before use

► Using the carrying holder

The shaver can be kept vertically. When transporting the shaver, you can use the carrying holder to protect the outer foil.

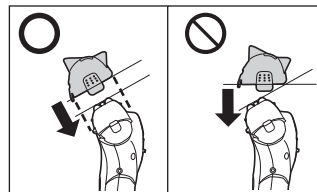
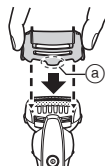
- When transporting the shaver, be sure to clean off any shavings before attaching the carrying holder.



► Attaching the carrying holder

Attach the carrying holder as illustrated.

- With the protrusion (a) facing the front, securely attach the carrying holder to the shaver aligned to the orientation of the shaver head until it clicks.



► Removing the carrying holder

Remove the carrying holder while pressing down on both sides.



Charging the shaver

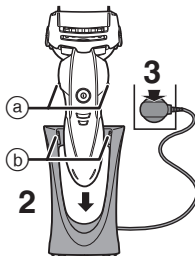
You can charge the shaver with the carrying holder attached.

1 Insert the appliance plug into the stand socket.



2 Insert the shaver in the charging stand as illustrated.

- The shaver will not charge unless the side terminals (a) are in contact with the charging terminals (b).
- Wipe off any water droplets on the side terminals.



3 Plug in the adaptor into a household outlet and check that the charge status lamp (➡) glows.

- Charging is completed after approx. 1 hour.
The charging time may decrease depending on the charging capacity.
- Charging the appliance after each use will not affect the battery life.

While charging



The charge status lamp (➡) glows red.

After charging is completed



The charge status lamp (➡) turns off.

Abnormal charging



The charge status lamp (➡) will blink twice every second.

- After charging is completed, turning the power switch ON with the shaver plugged in will cause charge status lamp (➡) to light up and then turn off after 5 seconds.
This shows that the shaver is fully charged.
- Recommended ambient temperature for charging is 10 – 35 °C. It may take longer to charge or the battery may fail to charge properly in extremely high or low temperatures.
The charge status lamp (➡) will blink twice every second when there is a problem with charging.
Charge the shaver within the recommended ambient temperature range.
- When charging the shaver for the first time or when it has not been in use for more than 6 months, the charge status lamp (➡) may not glow. It will eventually glow if kept connected.
- If there is noise from radio or other source while using the shaver, move to a different location to use the shaver.

4 Disconnect the adaptor after charging is completed.

- Charging the battery for more than 1 hour will not affect battery performance.

Note

You cannot operate the shaver while charging.

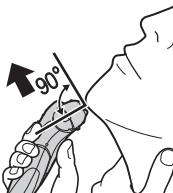
Using the shaver

1 Press the power switch.

- The power cannot be turned on when the switch lock lamp (🔒) blinks, as the power switch is locked. Press the power switch for more than 2 seconds to unlock. (See pages 6 and 7.)

2 Hold the shaver as illustrated and shave.

- Start shaving by applying gentle pressure to your face. Stretch your skin with your free hand and move the shaver back and forth in the direction of your beard. You may gently increase the amount of pressure as your skin becomes accustomed to this shaver. Applying excessive pressure does not provide a closer shave.



You can also use a pen grip to hold the shaver.



► Using the trimmer

Slide the trimmer handle up. Place at a right angle to your skin and move downwards to trim your sideburns.



► Notes

- Before shaving, check that the cleaning shutter is closed.
- Place your finger on the finger rest while in use. Keeping your finger placed on the power switch during use may accidentally lock the power switch or turn the shaver OFF.

- Do not use shaving creams or face cleansers containing scrubbing compounds as these may cause the outer foil to clog.
- The appliance may not operate in an ambient temperature approximately 5 °C or lower.
- Depending on the beard thickness or the amount of beard trimmings in the shaver head, the shaving sensor may not react and the driving sound may not change. This is not abnormal.
- The shaving sensor may not respond depending on the type and quantity of the shaving gel or the quantity of the foam. This is not abnormal.

Reading lamps when using

When the battery capacity is low

The charge status lamp (➡) blinks once every second when operating the shaver.



- You can shave 2 to 3 times after the charge status lamp (➡) blinks. (This will differ depending on usage.)
- A full charge will supply enough power for approx. 14 shaves of 3 minutes each.

Cleaning the shaver

Clean the housing with a soft cloth slightly dampened with tap water or soapy tap water. Do not use thinner, benzine, alcohol or other chemicals.

1. Remove the shaver from the charging stand.
2. Apply some hand soap and some water to the outer foil.
- Close the cleaning shutter.
3. Turn the shaver on.



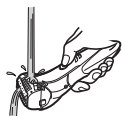
There are two ways to clean the shaver, depending on the actual dirt level.

To remove light dirt

4. Slide the cleaning shutter until it clicks.



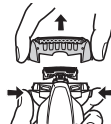
5. Clean the outer foil section with running water.



6. Turn the shaver off.
 - Rinse with water and shake up and down several times to remove the water.

To remove heavy dirt

4. Turn the shaver off after 10 – 20 seconds.
5. Remove the outer foil section and turn the shaver on.



6. Clean the shaver and the outer foil section with running water.



- Rinse with water and shake up and down several times to remove the water.

- Be careful not to hit the main body on the sink or any other object while draining the water. Failure to do so may cause malfunction.

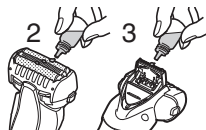
7. Wipe off any drops of water with a dry cloth.
8. Dry the outer foil section and the shaver completely in a shaded area.
 - The outer foil section will dry faster if removed from the main body.
9. Attach the outer foil section to the shaver.
10. Lubricate the shaver. (See page 11.)



Lubrication

To maintain shaving comfort for a long time, it is recommended that the oil provided with the shaver is used.

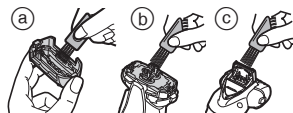
1. Switch off the shaver.
2. Apply one drop of oil to each of the outer foils.
3. Raise the trimmer and apply a drop of oil.
4. Switch the shaver on, and run it for approximately five seconds.
5. Switch off the shaver, and wipe off any excess oil from the outer foils with a soft cloth.



Cleaning with the brush

► Cleaning with the long brush

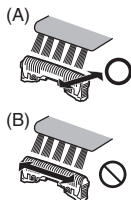
Clean the system outer foil (a), the shaver body (b) and the trimmer (c) using the long brush.



► Cleaning with the short brush

Clean the inner blades using the short brush by moving it in direction (A).

- Do not move the short brush in direction (B) as it will damage the inner blades and affect their sharpness.
- Do not use the short brush to clean the outer foils.

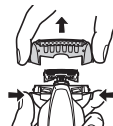


Replacing the system outer foil and the inner blades

system outer foil	once every year
inner blades	once every two years

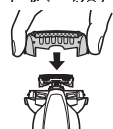
► Removing the outer foil section

Press the foil frame release buttons and lift the outer foil section upwards.



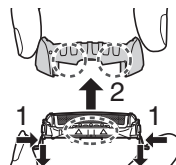
► Attaching the outer foil section

After turning the water inlet surface to the front, securely attach the outer foil section to the shaver until it clicks.



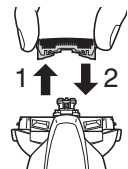
► Replacing the system outer foil

1. Press the system outer foil release buttons and pull down the system outer foil.
2. Align the water inlet surface and the system outer foil mark (Δ) and securely attach together.
 - The system outer foil cannot be reversely attached.
 - Always insert the system outer foil to the foil frame when attaching to the shaver.



► Replacing the inner blades

1. Remove the inner blades one at a time.
 - Do not touch the edges (metal parts) of the inner blades to prevent injury to your hand.
2. Insert the inner blades one at a time until they click.



► Replacement parts

Replacement parts are available at your dealer or Service Center.

Replacement parts for ES-ST29	System outer foil	WES9087
	Inner blades	WES9068

Troubleshooting

Problem	Action
The power switch does not turn ON.	► Unlock the switch lock. (See pages 6 and 7.)
Shavings fly all over.	► This can be improved by cleaning every time after shaving. If shavings are stuck on the inner blades, clean them with the cleaning brush. ► Confirm that the cleaning shutter is firmly closed.
System outer foil gets hot.	► Apply oil. (See page 11.) ► Replace the system outer foil if it is damaged or deformed. (See page 11.)
The shaver cannot be properly cleaned even after water is poured from the water inlet.	► When the shaver is very dirty, first use the cleaning brush to remove beard trimmings. Or, remove the foil frame and wash with water. (See page 10.)
The blades do not dry.	► The blades may not dry quickly due to temperature conditions. ► The blades can be dried more easily by removing for drying.

Problem	Action
The odor is getting stronger.	► This can be improved by cleaning every time after shaving. ► Apply oil. ► This can be improved by cleaning every time after shaving.
You do not get as close a shave as before.	Replace the system outer foil and/or inner blades. Expected life of system outer foil and inner blades: System outer foil: Approximately 1 year Inner blades: Approximately 2 years
The shaving sensor does not respond.	► Depending on the beard thickness or shavings inside the shaver head, the shaving sensor may not function (the driving sound may not change). This is not abnormal. ► The shaving sensor may not respond depending on the type and quantity of the shaving gel or the quantity of the foam. This is not abnormal. ► Apply oil. The shaving sensor may not respond when there is not enough oil on the blades.

Problem	Action
The shaving sensor responds even though the shaver is not in contact with the skin.	<p>Clean the beard trimmings from the shaver.</p> <p>▶ When the shaver is extremely dirty, remove the foil frame and wash with water. (See page 10.)</p> <p>Replace the system outer foil and/or inner blades. Expected life of system outer foil and inner blades:</p> <p>▶ System outer foil: Approximately 1 year Inner blades: Approximately 2 years</p>
Makes a loud sound.	<p>▶ Apply oil.</p> <p>▶ Confirm that the blades are properly attached.</p> <p>▶ The shaver can be loud due to the linear motor. This does not indicate a problem.</p>
The driving sound changes while shaving.	<p>▶ This is because the shaving sensor is operating. The sound of the shaving sensor changes depending on the beard thickness.</p>

Problem	Action
The shaver cannot be charged.	<p>▶ Push the main body into the charging stand all the way and make sure the charge status lamp glows.</p> <p>▶ Gently wipe the side terminals and the charging terminals of the charging stand with a cloth or tissue dampened with water.</p> <p>The recommended temperature for charging is 10 – 35 °C. If charged at a temperature other than the recommended temperature, the shaver may take longer to charge or may not charge at all.</p> <p>▶</p>
Operating time is short even after charging.	<p>▶ Apply oil.</p> <p>▶ When the number of operations per charge starts to decrease, the battery is nearing the end of its life.</p>
Shaver stopped functioning.	<p>▶ The appliance may not operate in an ambient temperature approximately 5 °C or lower.</p> <p>▶ The battery has reached the end of its life.</p>

Battery life

The life of the battery is 3 years. The battery in this shaver is not intended to be replaced by consumers. Have the battery replaced by an authorized service center.

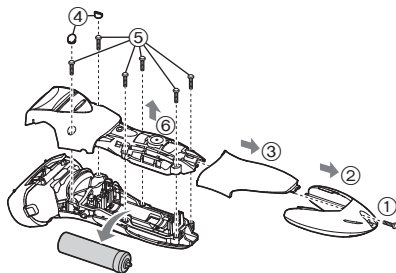
Removing the built-in rechargeable battery

Remove the built-in rechargeable battery before disposing of the shaver.

Please make sure that the battery is disposed of at an officially designated location if there is one.

This figure must only be used when disposing of the shaver, and must not be used to repair it. If you dismantle the shaver yourself, it will no longer be waterproof, which may cause it to malfunction.

- Remove the shaver from the charging stand.
- Press the power switch to turn on the power and then keep the power on until the battery is completely discharged.
- Perform steps ① to ⑥ and lift the battery, and then remove it.
- Take care not to short circuit the positive and negative terminals of the removed battery, and insulate the terminals by applying tape to them.



For environmental protection and recycling of materials

This shaver contains a Lithium-ion battery.

Please make sure that the battery is disposed of at an officially assigned location, if there is one in your country.

Specifications

Power source	See the name plate on the AC adaptor. (Automatic voltage conversion)
Motor voltage	3.6 V===
Charging time	Approx. 1 hour

This product is intended for household use only.

This image shows a single sheet of white paper with horizontal ruling lines. The lines are evenly spaced and run across the width of the page. There are no margins, text, or other markings on the paper.

Panasonic Corporation
<http://www.panasonic.com>
© Panasonic Corporation 2015