

Wi-Fi® QUICK SETUP GUIDE

Thank you for purchasing this product.
Please read these instructions carefully before using this product,
and save this manual for future use.

SQC0446
F0416BL0

- This guide describes how to connect this system to a network while starting up and operating the Panasonic Music Streaming app.
 - The operations and on-screen display items, etc. of the app "Panasonic Music Streaming" are subject to change.
- For the latest information, visit
<http://panasonic.jp/support/global/cs/audio/app/>
(This site is in English only.)

The Wi-Fi CERTIFIED™ Logo is a certification mark of Wi-Fi Alliance®.
The Wi-Fi Protected Setup™ Identifier mark is a certification mark of Wi-Fi Alliance®.
"Wi-Fi®" is a registered trademark of Wi-Fi Alliance®.
"Wi-Fi Protected Setup™", "WPA™", and "WPA2™" are trademarks of Wi-Fi Alliance®.
Google Play and Android are trademarks of Google Inc.
App Store is a service mark of Apple Inc.
All other trademarks are trademarks of their respective owners.



1 Download the app

Download the free "Panasonic Music Streaming" app from the store on your smartphone/ tablet.



iOS : App Store



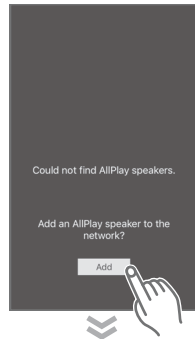
Android : Google Play™



2

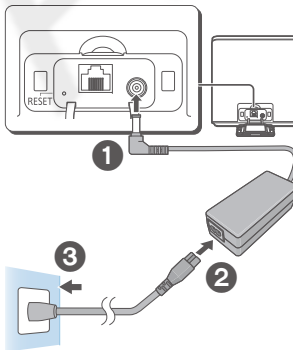
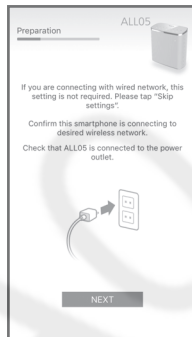
Open the app and follow the on-screen instructions

Select ALL05.



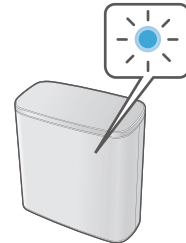
Connect the AC adaptor and AC mains lead.

NOTE:
Do not connect the LAN cable.



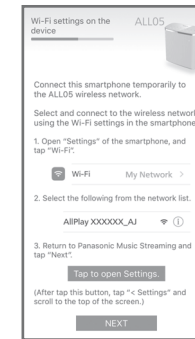
Turn on the unit.

Wait until the network indicator stops blinking in blue and red, and starts blinking in blue.



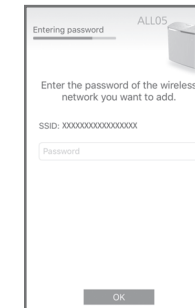
The blinking in blue starts after approximately 60 seconds. If the blinking in blue does not start, restore the factory defaults. (see Operating instructions)

iOS : Follow the steps on app screen.



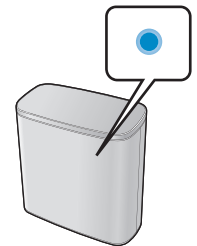
- "AllPlay XXXXXX_AJ" can sometimes take 1 minute to appear in the network list.
- Depending on the screen size of your smartphone/tablet, you may need to scroll to the bottom for any remaining steps.

Android : Enter the password of your wireless network.



3 After a short wait ...you're connected!

The network indicator lights up in blue.



After a short wait, your smartphone/tablet should be automatically reconnected to your Wi-Fi network. In case you are not reconnected automatically, please re-select your Wi-Fi network from the settings / Wi-Fi settings menu on your device.

Further Support
For more information and other network setting methods, refer to the Operating Instructions. If you require further help, please visit <http://panasonic.jp/support/global/cs/audio/> (This site is in English only.)