

K2_{TYPE} Wall Mounted



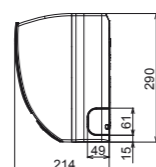
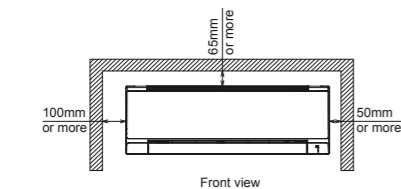
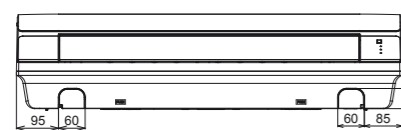
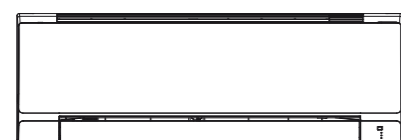
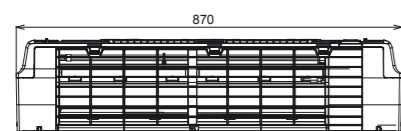
Model Name		S-22MK2E5B	S-28MK2E5B	S-36MK2E5B	S-45MK2E5B	
Power source		220/230/240V, 1 phase - 50/60Hz				
Cooling capacity	kW	2.2	2.8	3.6	4.5	
	BTU/h	7,500	9,600	12,300	15,400	
Heating capacity	kW	2.50	3.20	4.20	5.0	
	BTU/h	8,500	10,900	14,300	17,100	
Power input	Cooling kW	0.025/0.025/0.025	0.025/0.025/0.025	0.030/0.030/0.030	0.030/0.030/0.030	
	Heating kW	0.025/0.025/0.025	0.025/0.025/0.025	0.030/0.030/0.030	0.030/0.030/0.030	
Running current	Cooling A	0.21	0.23	0.25	0.33/0.32/0.31	
	Heating A	0.21	0.23	0.25	0.33/0.32/0.31	
Fan	Type	Cross-flow fan	Cross-flow fan	Cross-flow fan	Cross-flow fan	
	Air flow rate (H/M/L)	m ³ /h	540/450/390	570/498/390	654/540/390	870/750/600
		L/s	150/125/108	158/138/108	181/150/108	242/208/167
	Motor output	kW	0.03	0.03	0.03	0.054
Sound power level (H/M/L)	dB	51/48/44	52/49/44	55/51/44	53/50/48	
Sound pressure level (H/M/L)	dB(A)	36/33/29	37/34/29	40/36/29	38/35/33	
Dimensions	H x W x D	mm	290 x 870 x 214	290 x 870 x 214	290 x 870 x 214	302 x 1,120 x 236
	Liquid	mm (inches)	Ø6.35 (Ø1/4)	Ø6.35 (Ø1/4)	Ø6.35 (Ø1/4)	Ø6.35 (Ø1/4)
	Gas	mm (inches)	Ø12.7 (Ø1/2)	Ø12.7 (Ø1/2)	Ø12.7 (Ø1/2)	Ø12.7 (Ø1/2)
Pipe connections	Gas	mm (inches)	Ø12.7 (Ø1/2)	Ø12.7 (Ø1/2)	Ø12.7 (Ø1/2)	Ø12.7 (Ø1/2)
	Drain piping	mm	Ø18	Ø18	Ø18	Ø18
Net weight	kg	9	9	9	13	

	S-56MK2E5B	S-73MK2E5B	S-106MK2E5B
Power source	220/230/240V, 1 phase - 50/60Hz		
Cooling capacity	5.6	7.3	10.6
	19,100	24,900	36,200
Heating capacity	6.3	8.0	11.4
	21,500	27,300	38,900
Power input	0.035/0.035/0.035	0.055/0.055/0.055	0.080/0.080/0.080
	0.035/0.035/0.035	0.055/0.055/0.055	0.080/0.080/0.080
Running current	0.36/0.35/0.34	0.52/0.51/0.50	0.72/0.70/0.68
	0.36/0.35/0.34	0.52/0.51/0.50	0.72/0.70/0.68
Fan	Cross-flow fan	Cross-flow fan	Cross-flow fan
	960/840/720	1,170/1,020/840	1,290/1,110/900
	267/233/200	325/283/233	358/308/250
Motor output	0.054	0.054	0.054
Sound power level (H/M/L)	55/52/50	62/59/55	64/61/57
Sound pressure level (H/M/L)	40/37/35	47/44/40	49/46/42
Dimensions	302 x 1,120 x 236	302 x 1,120 x 236	302 x 1,120 x 236
	Ø6.35 (Ø1/4)	Ø9.52 (Ø3/8)	Ø9.52 (Ø3/8)
	Ø12.7 (Ø1/2)	Ø15.88 (Ø5/8)	Ø15.88 (Ø5/8)
Pipe connections	Ø18	Ø18	Ø18
	Ø18	Ø18	Ø18
Net weight	13	14	14

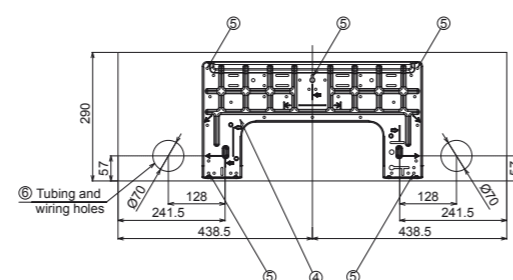
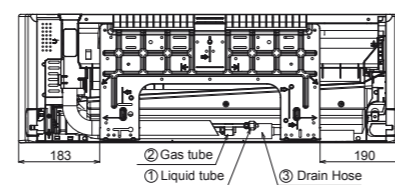
GLOBAL REMARKS	Rated conditions:	
	Cooling	Heating
	Indoor air temperature	27°C DB / 19°C WB
Outdoor air temperature	35°C DB / 24°C WB	7°C DB / 6°C WB

Specifications are subject to change without notice.

K2 (22-36) TYPE WALL MOUNTED Dimensions

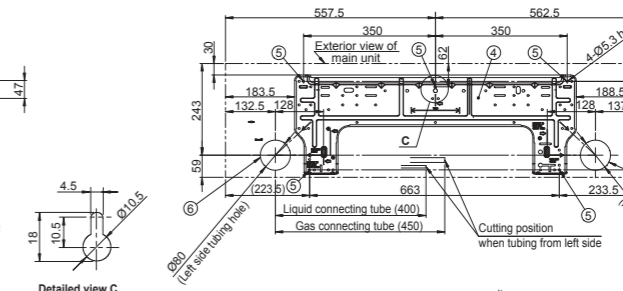
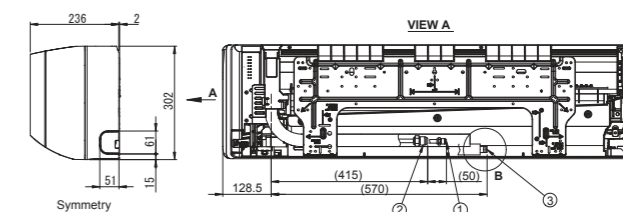
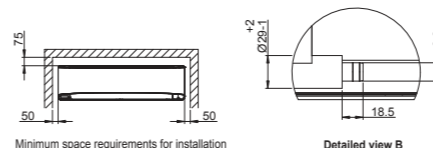
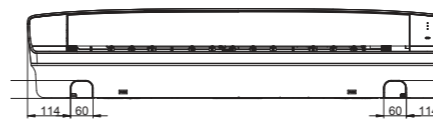
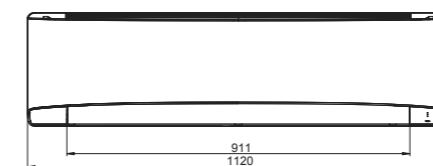


- 1 Refrigerant piping (liquid pipe) ø6.35(flared)
- 2 Refrigerant piping (gas pipe) ø12.7(flared)
- 3 Drain hose (outer dia. ø16)
- 4 Rear panel (PL BACK)
- 5 Rear panel fixing holes (ø5 holes or 5X13 oval holes)
- 6 Piping and wiring holes (ø70)



unit: mm

K2 (45-106) TYPE WALL MOUNTED Dimensions



- 1 Refrigerant piping (liquid pipe) 45-56 / 73-106 type ø6.35 / ø9.52 (flared)
- 2 Refrigerant piping (gas pipe) 45-56 / 73-106 type ø12.7 / ø15.88 (flared)
- 3 Drain hose VP13 (outer dia. ø18)
- 4 Rear panel (PL BACK)
- 5 Piping and wiring holes (ø80)

unit: mm