

U2_{TYPE} 4-WAY Cassette

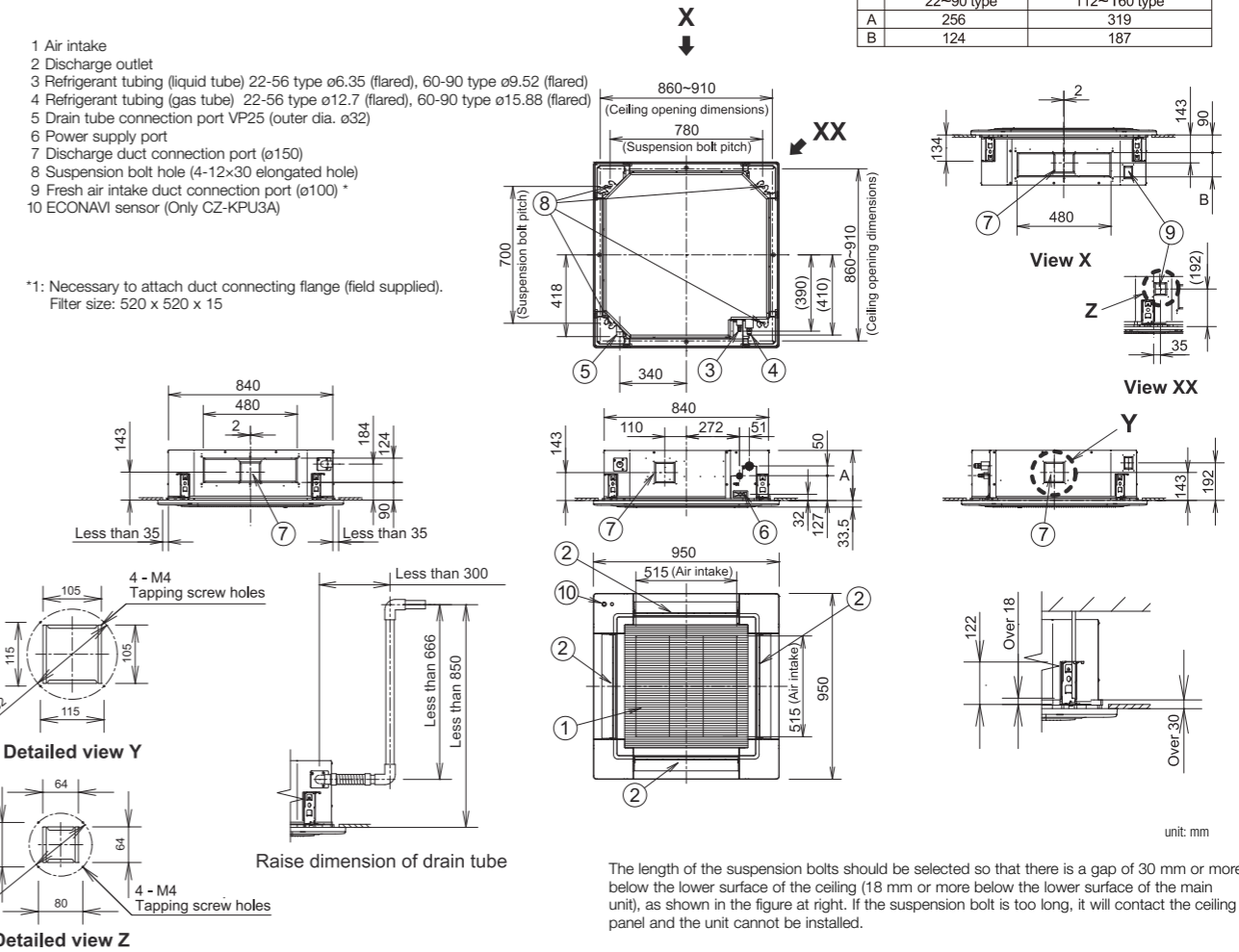
Model Name	S-22MU2E5BN	S-28MU2E5BN	S-36MU2E5BN	S-45MU2E5BN	S-56MU2E5BN	
Power source	220/230/240 V, 1 phase - 50Hz/60Hz					
Cooling capacity	kW	2.2	2.8	3.6	4.5	5.6
	BTU/h	7,500	9,600	12,300	15,400	19,100
Heating capacity	kW	2.5	3.2	4.2	5.0	6.3
	BTU/h	8,500	10,900	14,300	17,100	21,500
Power input	Cooling kW	0.020/0.020/0.020	0.020/0.020/0.020	0.020/0.020/0.020	0.020/0.020/0.020	0.025/0.025/0.025
	Heating kW	0.020/0.020/0.020	0.020/0.020/0.020	0.020/0.020/0.020	0.020/0.020/0.020	0.025/0.025/0.025
Running current	Cooling A	0.21/0.21/0.20	0.21/0.21/0.20	0.21/0.21/0.20	0.21/0.21/0.20	0.24/0.23/0.22
	Heating A	0.20/0.20/0.19	0.20/0.20/0.19	0.20/0.20/0.19	0.20/0.20/0.19	0.23/0.22/0.21
Fan	Type	Turbo fan				
	Air flow rate (H/M/L)	768/726/690				
	L/s	213/202/192				
	Motor output kW	0.06				
Sound power level (H/M/L)	45/44/43					
Sound pressure level (H/M/L)	30/29/28					
Dimensions* H x W x D	256+(33.5) x 840 (950) x 840 (950)					
Pipe connections	Liquid	Ø6.35 (Ø1/4)				
	Gas	Ø12.7 (Ø1/2)				
	Drain piping	VP-25				
Net weight* (Panel)	19 (+5)					

Model Name	S-60MU2E5BN	S-73MU2E5BN	S-90MU2E5BN	S-112MU2E5BN	S-140MU2E5BN	S-160MU2E5BN	
Power source	220/230/240 V, 1 phase - 50Hz/60Hz						
Cooling capacity	kW	6.0	7.3	9.0	11.2	14.0	16.0
	BTU/h	20,500	24,900	30,700	38,200	47,800	54,600
Heating capacity	kW	7.1	8.0	10.0	14.0	16.0	18.0
	BTU/h	24,200	27,300	34,100	47,800	54,600	61,400
Power input	Cooling kW	0.035/0.035/0.035	0.040/0.040/0.040	0.040/0.040/0.040	0.095/0.095/0.095	0.095/0.095/0.095	0.105/0.105/0.105
	Heating kW	0.035/0.035/0.035	0.040/0.040/0.040	0.040/0.040/0.040	0.090/0.090/0.090	0.090/0.090/0.090	0.100/0.100/0.100
Running current	Cooling A	0.34/0.33/0.32	0.37/0.36/0.35	0.39/0.38/0.37	0.77/0.74/0.71	0.77/0.74/0.71	0.85/0.82/0.79
	Heating A	0.33/0.32/0.31	0.36/0.35/0.34	0.38/0.37/0.36	0.75/0.72/0.69	0.75/0.72/0.69	0.83/0.80/0.77
Fan	Type	Turbo fan					
	Air flow rate (H/M/L)	1,260/960/780					
	L/s	350/267/217					
	Motor output kW	0.06					
Sound power level (H/M/L)	51/47/44						
Sound pressure level (H/M/L)	36/32/29						
Dimensions* H x W x D	319+(33.5) x 840 (950) x 840 (950)						
Pipe connections	Liquid	Ø9.52 (Ø3/8)					
	Gas	Ø15.88 (Ø5/8)					
	Drain piping	VP-25					
Net weight* (Panel)	20 (+5)						

Global remarks	Rated conditions:	
	Cooling	Heating
	Indoor air temperature	27°C DB / 19°C WB
Outdoor air temperature	35°C DB / 24°C WB	7°C DB / 6°C WB

* The values in () for external dimensions and Net weight are the values for the optional ceiling panel.
In the case of nanoe X OFF Specifications are subject to change without notice.

U2 TYPE 4-WAY CASSETTE Dimensions



Standard Equipped nanoe™ Technology

- nanoe™ X, charged water particles, contain hydroxyl radical (OH radical) that work to provide quality air.
- The electrodes of nanoe™ X devices are made of titanium and electricity discharge into the water particles of nanoe™. So no need to clean or replace the device (maintenance free without wear).



Craftsmanship in Japan enables the adoption of titanium

Electrodes of nanoe™ X devices are produced with the support of craftsmen in Japan that has advanced expertise on processing ultra-small parts of titanium glass frames although titanium is very strong material and difficult to process.



nanoe™ X module

Unique nanoe™ X module casing releases 48 trillion hydroxyl radical (OH radical) per second.



nanoe™ X device