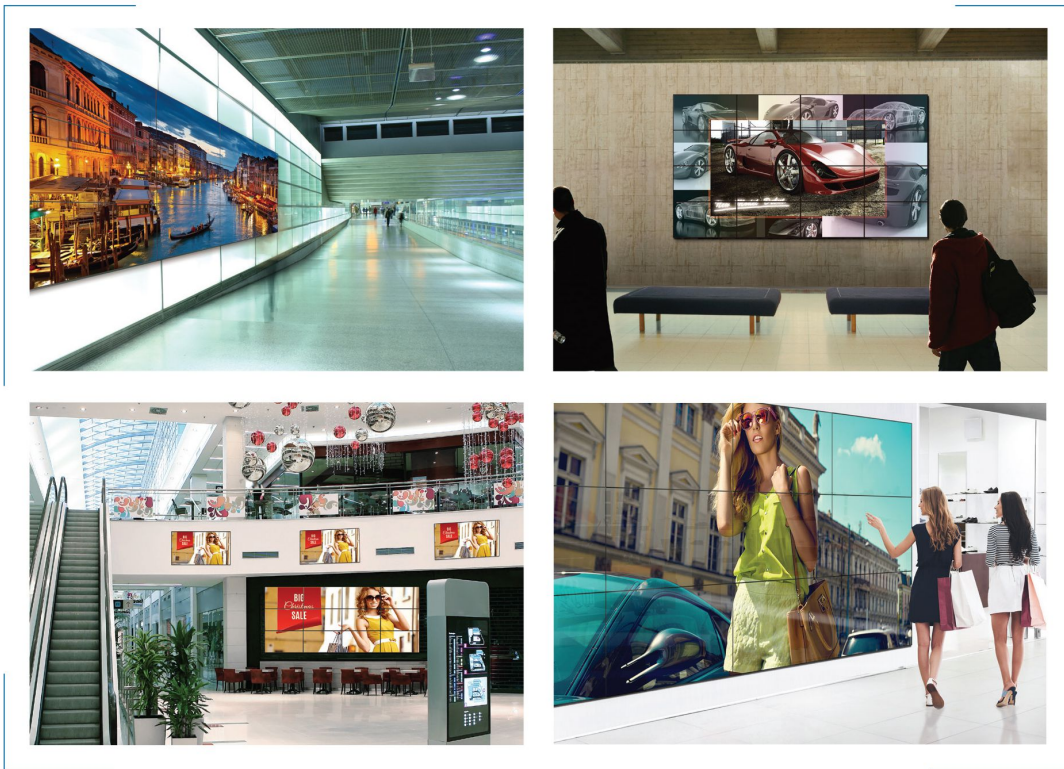


PROFESSIONAL DISPLAYS TO ENHANCE YOUR BUSINESS



| | LH Series | | | |
|-------------|----------------------|----------------------|----------------------|----------------------|
| | LH-55VW3HKD | LH-55VW1KD | LH-55VW1HKD | LH-55VW3KD |
| Screen Size | 55-inch | | | |
| Panel Type | IPS Panel/DLED | | | |
| Resolution | 1920 x 1080 | | | |
| Brightness | 700cd/m ² | 500cd/m ² | 700cd/m ² | 500cd/m ² |
| Bezel | 3.5mm | 1.8mm | 1.8mm | 3.5mm |

Simple Professional Display

- Narrow Bezel for seamless Video Walls
- Suitable for multiple applications: Retails, Restaurants, Shopping Malls, Showrooms, Offices
- Anti-Glare(AG) Surface Treatment. The AG layer on panels scatters reflected light from the sun or illumination to reduce glare and improve visibility
- Easy Installation/Easy Configuration
- Generous connectivity for professional use

| LH-Series | | | | | |
|---------------|--|----------------------------|----------------------|------------------------|-----------------------|
| Category | | Video Wall - Business Lite | | | |
| Model | | LH-55VW3HKD | LH-55VW1KD | LH-55VW1HKD | LH-55VW3KD |
| Display Panel | Screen size | 55-inch | | | |
| | Panel Type | IPS Panel/DLED | | | |
| | Effective display area (H x V) | 1209 x 680mm | | | |
| | Resolution(H x V) | 1920 x 1080 | | | |
| | Brightness | 700cd/m ² | 500cd/m ² | 700cd/m ² | 500cd/m ² |
| | Contrast Ratio | 1400:1 | | | |
| | Response Time(ms) | 8ms(G to G) | | | |
| | Viewing Angle (Horizontal / Vertical) | 178(H)/178(V) | | | |
| | Panel Surface Treatment | Anti-Glare (Haze 2%) | Anti-Glare (Haze 3%) | | Anti-Glare (Haze 10%) |
| Terminal | HDMI In | 2 | | | |
| | DP IN | 1 | | | |
| | USB Input | 1 | | | |
| | DVI IN | 1 | | | |
| | DVI OUT | 1 | | | |
| | DP OUT | 1 | | | |
| | MC | 1 | | | |
| | Control | RS232 | RS232-INx1 | | |
| | | RS232-OUTx1 | | | |
| Power | Voltage | 100-240V AC, 50/60Hz | | | |
| | P-Consumption | 175W | 170W | 225W | 175W |
| | Stand-by | ≤0.5W | | | |
| OSD | Language | English/Chinese | | | |
| Weight | Net | Approx. 25.3kg | Approx. 27.2kg | Approx. 27.6kg | Approx. 25.3kg |
| | Gross | Approx. 67kg | Approx. 67.2kg | Approx. 69.6kg | Approx. 67kg |
| General | Dimensions (mm)(W x D x H) | 1213.4mm x | 1211.4mm x | 1211.4mm x | 1213.4mm x |
| | | 121.85mm x | 121.1mm x | 121.1mm x | 121.85mm x |
| | | 684.2mm | 682.2mm | 682.2mm | 684.2mm |
| | Carton Size (mm)(W x D x H) | 1415mm x 300mm x 895mm | | | |
| Bezel | Width | 3.5mm | 1.8mm | 3.5mm | |
| Environment | Operating Environment | Temperature 0°C to 40°C | | | |
| | | Humidity 20% to 85% | | | |
| | Storage Environment | Temperature -10°C to 60°C | | | |
| | | Humidity 20% to 85% | | Humidity 10% to 85% | |
| | Continuous Operation | 18 hours/day | | | |
| Accessory | Remote Control | 1 | | | |
| | Power Cord | 1 | | | |
| | RS232 Signal Cord | 1 | | | |

Weights and Dimensions shown are approximate. Specifications and appearance are subject to change without notice. This Product may be subject to export control regulation.