

ECONAVI *INVERTER*

Panasonic[®]

Operating Instructions

Refrigerator

For Household Use

Model No. **NR-BR307**
NR-BR347



Contents

• Safety precautions	2
• Usage precautions	3
• Installation	4
• Parts identification	5
• Temperature control	6
• ECONAVI operation	7
• Usage tips	8
• How to make ice cubes	9
• How to clean the refrigerator	10
• Troubleshooting	11
• Specifications	12

Thank you for purchasing the Panasonic product.

- Please read these instructions carefully and follow safety precautions page 2-3 before using this product.
- Please make sure the date and name of store of purchase are stamped in warranty card and keep it with this operating instructions.

MAL

AK-172190
T0914-0
Printed in Thailand

Safety precautions

Please be sure to follow these instructions.



WARNING

This sign means
[It may lead a serious injury or death.]



CAUTION

This sign means
[It may result in injury or property damage.]



These signs mean
prohibited action.



This sign means required action.

Otherwise it may
cause a fire, injury,
electrical shock.



WARNING

For power plug and cord...



- Do not plug or unplug with wet hands.
- Do not let the cord or plug be damaged.



- Disconnect power plug when cleaning.
- Plug into a wall outlet of the rated voltage on its own with the rated current and insert plug fully.
- Reserve one plug for the refrigerator only. Avoid connecting many appliances to the same plug and unroll through the length of cord.
- Remove dust periodically from the power plug.
- If the supply cord is damaged, it must be replaced by the manufacturer, its service agent or similarly qualified persons in order to avoid a hazard.
- If you detect burning smell, disconnect the power plug and ventilate the kitchen.
- **Stop** using the refrigerator immediately if there is an abnormality or failure. (Otherwise it may cause smoke, a fire or electrical shock)
Abnormality and failure examples
 - Power cord or plug is abnormally hot
 - Power cord is deeply cut or deformed
 - There is burning smell
 - You can feel tingling electricity

In case of emergency...



- Do not disassemble, repair or modify the refrigerator by yourself. If you want to repair the refrigerator, please consult your dealer or authorized service center.
- Do not use mechanical device or other means to accelerate the defrosting process, other than those recommended by the manufacturer.



- Maintenance work only be carried out at workshop by well-trained maintenance worker.

To prevent burn...



- Do not touch the compressor and pipes, because of high temperature, that there is a risk of burn injury.

When recycling the product...



- Before taking the refrigerator to be recycled, please remove all the door opening seal to prevent locking a child in it.
- The operating instructions should be handed over to any person who would use or handle the refrigerator whenever the refrigerator would be transferred to another location and delivered to a recycling plant.
- Regarding to local laws, Cyclo-Pentane is used for insulation of this refrigerator. When you throw away this unit, please discard it by proper method and do not dispose it by burning.
- The warning labels mentioned above should be kept throughout the life of the refrigerator.

When installing the product...



- For safety and efficiency in high operation, it should be checked that the ground connection system in the house has been installed correctly.

When using...



- Do not damage the cooling circuit (piping on the back.)
- Do not touch compressor or pipe, this area is high temperature.
- Do not let any children hang the refrigerator's door, it may overturn to the kid.
- Do not place any water container on the top of the refrigerator.



- This appliance is not intended to use by persons (including children) with reduced physical, sensory or mental capabilities or lack of experience and knowledge, unless they have been given supervision or instruction concerning use of the appliance by a person responsible for their safety.
- Children should be supervised to ensure that they do not play with the appliance.

Otherwise it may cause injury, accidents.

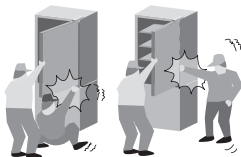


CAUTION

When opening/closing the doors...



- While opening the refrigerator, be careful not to pinch other one's hand holding the door.
- Mind the gap between the doors. They may nip your hand while closing the door.



When storing food...



- **Do not** freeze glass bottles, that there is a risk of injury. (If the liquid in a glass bottle is frozen and broken, you may be injured.)
- **Do not** add a high impact on glass trays. (Otherwise those glass trays may break and you may be injured.)



When moving the refrigerator...



- Hold the refrigerator tightly when transporting.
- Apply protective covering, etc. to floors with a fragile surface.



Usage precautions

When opening/closing the doors...

- **Do not** refrigerate items which are bigger than tray or shelf, as the door will not close completely causing leakage of cool air.
- **Do not** open refrigerator frequently or leave it open for long time in order to prevent water dripping inside and waste energy.
- Frequently check the door opening seal, it must be closed to the refrigerator's body completely.

When cleaning...

- **Do not** clean the refrigerator with chemical substance or liquid. It will cause damage and have corrosion on the surface.
- Clean the evap pan located over the compressor at the back of the refrigerator every three months to prevent the odour generated from humidity.



When using...

- **Do not** put anything on top of the refrigerator. Otherwise, it may fall due to vibration.
- When the plug is disconnected, leave it for 5 minutes before plugging again. If not, the compressor may not work.
- Adjust the temperature according to the actual operating condition for energy saving.
- If you will not be at home for several days and there are nothing refrigerated in the refrigerator, the plug should be disconnected for energy saving.
- The outside wall of refrigerator cabinet may sometimes get warm, especially just after installation. This is quite normal, and is due to the built-in Mullion Dryer Pipe which prevents sweating and radiates heat.
- When humidity is high, e.g. during rainy-season, condensation may appear on the surface of cabinet, especially around the door seal gasket. Wipe off the condensed water with a clean cloth.
- The humidity inside the fresh case may condense so wipe it with a cloth periodically. Clean the fresh case once a month.



When storing food...

- **Do not** place warm/hot foodstuff in the refrigerator.
- **Do not** overload the refrigerator. Gap must be provided between foodstuffs to maintain the cooling effect.
- Store fruits and vegetables in crisper, where trapped moisture helps preserve food quality for longer time periods.
- Drinking water, beverage bottles should be sealed to prevent the odour.
- Foodstuff such as vegetable, fruits and fresh food should be wrapped or pack in box before freezing and refrigerating.
- Put the food such as meat or fish in the freezer if you want to store for an extended period.
- Cool hot dishes to room temperature before placing them in your refrigerator.
- Cover juicy foods with tight lids, plastic film or foil.
- **Do not** keep the door open any longer than necessary, particularly in hot, humid weather.



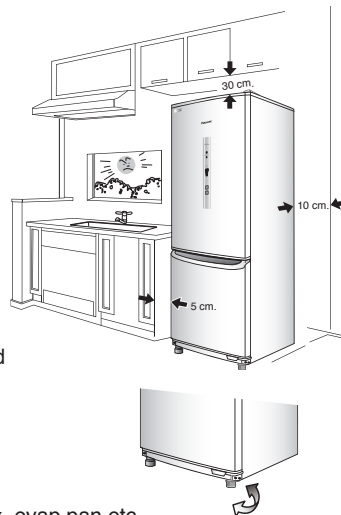
Installation

The distance from the wall

- The top of the refrigerator and the ceiling at least 30 cm.
- The wall and the back of the refrigerator at least 10 cm.
- The side of the refrigerator and the wall at least 5 cm.

Area around installed

- **Do not** locate the refrigerator in a humid place as rust may form and may cause electric leakage.
- **Do not** locate the refrigerator exposing to direct sunlight as the heat and sunlight will increase the temperature.
- **Do not** locate the refrigerator near heat source such as cooking stove or oven.
- The refrigerator must be located in the place where there is good air circulation.
- In case of placing the refrigerator on an uneven surface, adjust the adjuster bolt to make the refrigerator stands stably.



Moving or shifting

- When moving or shifting the refrigerator, remove ice tray, ice box, evap pan etc. and check to be sure that there is no water in the refrigerator.

LED lamp and Grounding

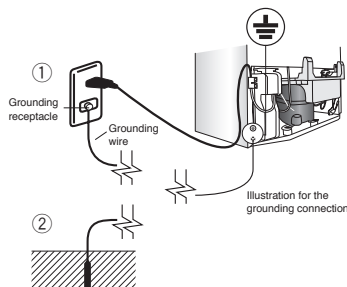
- The refrigerator LED lamp, specially designed for this refrigerator, does not function on individual replacing. If you need replacement, please contact Panasonic Service Center.
- If there is no grounding wiring plug in refrigerator, it should be connected with grounding connection to prevent electrical hazard.

For safety, the grounding connection should be done

(For a refrigerator with plug (2-pin plug) without any grounding wire)

The grounding connection will allow prevention of danger resulted from electricity leakage. The grounding connection can be performed in 2 ways as follows:

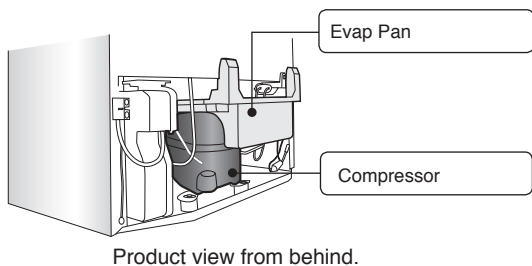
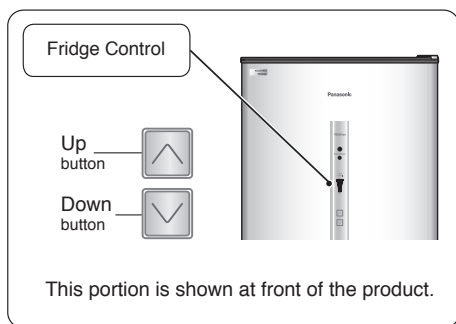
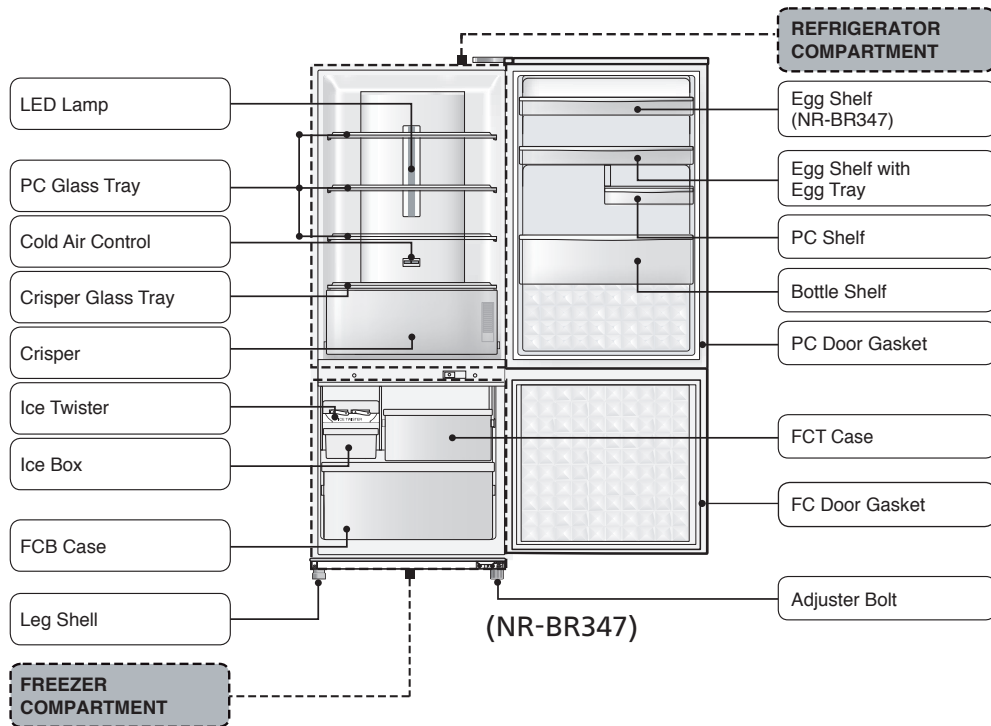
1. In the case that the grounding receptacle having been prepared for the socket (plug socket), connect the grounding wire to the screw used for grounding connection at the bottom rear of the refrigerator (regarding the screw used for grounding connection, please notice the ⚡ symbol) as shown in the illustration ①.
2. In the case that the socket (plug socket) having not been provided with any grounding receptacle, connect the grounding wire to the screw at the bottom of the refrigerator, (as regards the screw used for grounding connection, please notice the ⚡ symbol). And then connect the other end to the grounding rod as shown in the illustration ②.



Prohibited spots for grounding connection

- Water supply pipes and gas pipes (dangers from electric shock or explosion).
- The grounding wires of telephone cords and lightning rods (dangers from lightning).

Parts identification



SPECIAL FEATURE

■ NON-CFC

This unit uses totally **NON-CFC MATERIALS** both for refrigerant (HFC-134a) and for insulation (Cyclo-Pentane). So, this refrigerator does not damage the earth's ozone layer.

■ INVERTER

In accordance with temperature change inside the compartment, the motor runs at different speed. When the temperature is stable, the motor runs at lower speed (energy saving & lower noise). When powerful cooling is required, the motor runs at a higher speed.

Temperature control

Operate the Fridge Control when changing the temperature of REFRIGERATOR COMPARTMENT.

Press to lower the temperature and to raise it.

TEMP. CONTROL REFRIGERATOR COMPARTMENT		
	"Max"	Lower than "Med" by approximately 2°C ~ 3°C
	"Med"	Approximately 3°C ~ 5°C
	"Min"	Higher than "Med" by approximately 2°C ~ 3°C

Operate the Cold Air Control when changing the cold air condition.

Cold Air Control	
"Fridge Max"	REFRIGERATOR COMPARTMENT takes priority.
"Normal"	Cold air condition is normal.
"Freezer Max"	FREEZER COMPARTMENT takes priority.

Note: Temperature control varies depends on the changing of environment and food storage quantity.

Fine adjustment mode

This refrigerator is specially designed for appropriate use, which the temperature can be controlled finely by turning on the Fine adjustment mode.

How to operate of Fine adjustment mode

1. Start operation of Fine adjustment mode

Set Fridge Control to "Min" with the "Fridge Control" button, press Fridge Control button for 10 seconds or longer, then the Fine adjustment mode will be start.

2. Operation of the Fine adjustment mode

Fine adjustment mode can set following below table; the setting Fine adjustment mode can be changed by

Each time of pressing Fridge Control button, it will be step ①→②→...→⑧→⑨

Each time of pressing Fridge Control button, it will be step ⑨→⑧→...→②→①

Cooling Level	Minimum Maximum								
Step	①	②	③	④	⑤	⑥	⑦	⑧	⑨
FRIDGE CONTROL LED DISPLAY									

Lighting

Flashing

Not Lighting

3. Finish operation of Fine adjustment mode

To exit the Fine adjustment mode, set button of fine adjustment mode to step ①, press Fridge Control button for 10 seconds or longer, then the refrigerator return to normal operation mode.

ECONAVI operation

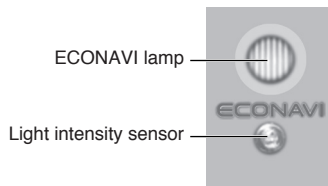
Detect opening and closing of door and brightness around refrigerator, and automatically controls operation to save energy¹.

ECONAVI lamp is on during ECONAVI operation

- This refrigerator learn the lifestyle patterns of your family from opening and the time periods of infrequent use to perform ECONAVI operation.

Note:

- The refrigerator learns your lifestyle pattern from the previous 3 weeks, and uses what it has learned from the 4th week onwards. Therefore, the ECONAVI lamp “ON/OFF” pattern may change from the 4th week onwards.
- The refrigerator performs ECONAVI operation when it becomes dark² around the refrigerator, such as when you are asleep.
- The brightness of ECONAVI lamp is lowered approximately 5 minutes after the lamp turns on.



Setting for enabling ECONAVI operation

- ECONAVI operation is enabled automatically only when the temperature control of the refrigerator compartment are set to “Med”.
- It is not possible to forcefully start ECONAVI operation while fridge control setting at “Max” and “Min” position.

Note:

- ¹ Effectiveness differs depending on the ambient temperature, ambient brightness, number of times when doors are opened and closed, and state in which food is stored.
- ² Darkness is detected by the light intensity sensor at approximately 3 lx to 10 lx or less.

Usage tips

Energy saving tips



Basics of energy saving
Save cool air!

Do not block the cold air outlet with food items!

If cool air does not spread into every corner of compartments, then the interior will not be sufficiently cooled and more electricity will be consumed.



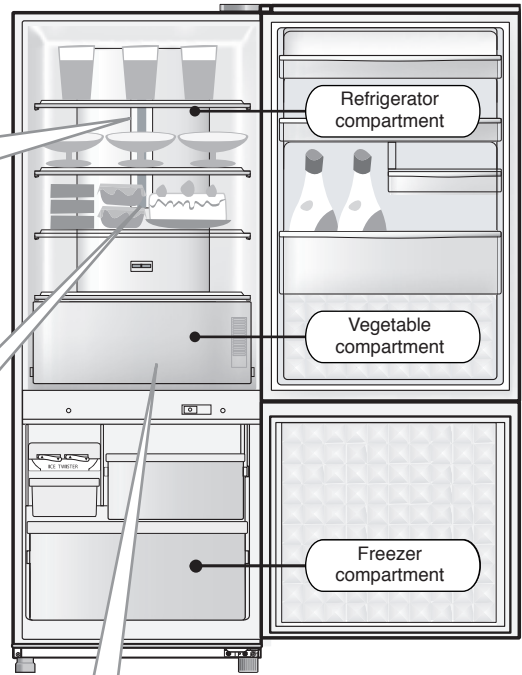
Do not stuff food into the compartments.

If the cool air passage is blocked, then approx. 5 to 15% of electricity will be wasted. Provide sufficient space between foods.



Store warm food and drinks after they have cooled.

Otherwise, they will not only raise the interior temperature, but also affect the freshness of other foods.



Do not put food in the refrigerator when it is not necessary.

■ A cold dark place will suffice!



It is not necessary to store uncut onions, potatoes, burdocks, etc. in the refrigerator (except during the summer).

■ Cool just before you eat!



If uncut tropical fruits are cooled down excessively, they may be discolored or their vitamin contents may decrease.

What to put in where?

Approx

5°C ~

Approx

3°C

Not Frozen

Refrigeration

“Food and drinks readily served”

For regular storage of food and drinks or temporary storage of those to be served soon.



Approx

8°C ~

Approx

3°C

Vegetables

“Fruits and vegetables”

A rather high humidity keeps fruits and vegetables fresh and juicy.



Approx

-18°C ~

Approx

-23°C

Frozen

Freezing

“If storing food for an extended period...”

For storage of frozen or dried foods.



Storage using hermetically sealed containers is recommended!

To prevent the interior from being discolored!



- Cut citrus fruits
(→ The plastic will be discolored white.)

To prevent odors from spreading!

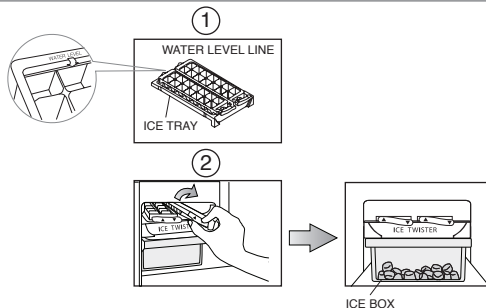


- Garlicky or other strong smelling vegetables
(→ Odors will spread to other nearby food.)

How to make ice cubes

STEP

1. Pull out the ice tray and fill water in the ice tray till the water level line, then place it back after that wait till ice is made.
2. To remove ice cubes, twist the ice tray clockwise. The ice cubes will drop into the ice box.



How to clean the refrigerator

1 Interior cleaning.

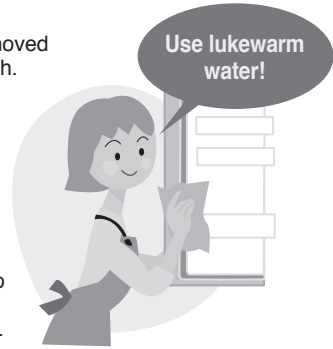
Wipe off the stain with warm water. When stains can not be removed easily, wipe them with warm water and soap by using a soft cloth. Then wipe the soap off using damp soft cloth.

2 Exterior cleaning.

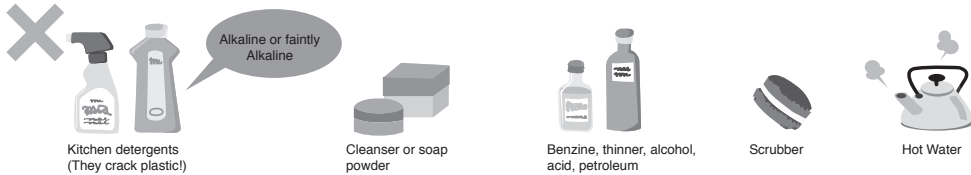
Cleaning by using soft cloth with warm water and soap. Then wipe off the soap.

3 PC/FC Door gasket.

- Clean by wiping softly. This area, petroleum gel was applied to reduce the friction of the refrigerator body. Be careful not to wipe off them.
- The door opening seal is replaceable when reaching end of life. While cleaning, push it back to the groove if it comes off.



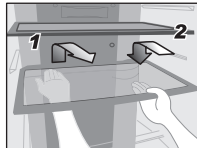
Note: Do not use the following items. (Otherwise, the surface will be scratched.)



Removing trays for cleaning.

• Removing

1. Unhook the protrusion at the back by lift it upward and pull the tray forward until removing.



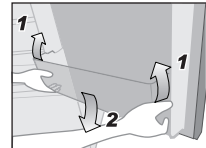
• Attaching

2. Push the tray until it reached the end lock.

Removing egg shelf, PC shelf and bottle shelf for cleaning.

• Removing

1. Lift it upward, alternating between the right and left side.

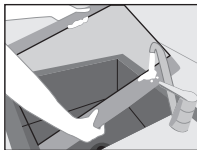


• Attaching

2. Placing it on both supporters, and then press until it reached the end of supporters.

Cleaning escutcheon crisper glass tray.

1. If there is the stain on escutcheon crisper glass tray, please remove and clean by rinsing with clean water.

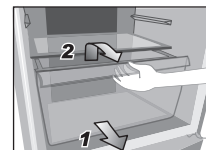


2. If there is the deep stain on crisper glass tray, please soak in warm water and then rinse with clean water again.

Removing the crisper and FCB case for cleaning.

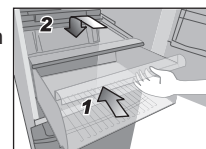
• Removing

1. Pull the case until it reached the end of stopper.
2. Rise up the front of case a bit and then completely take out.



• Attaching

1. Push the case on both supporters.
2. Rise it up, then push until it reached the end.

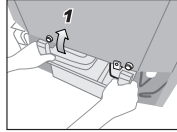




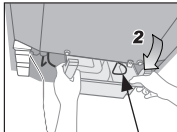
Removing the evap pan for cleaning.

• Removing

1. Tilt up the evap pan a bit and then lift it upward until the evap pan hole unlock from the hook evap pan.



2. Pull the evap pan until touching with evap pipe and carefully take it out under the evap pipe.

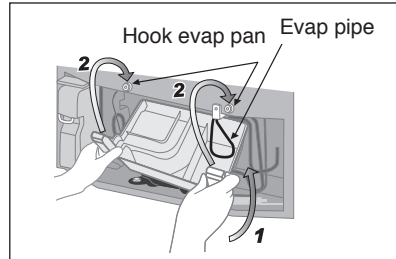


Evap pipe

Note: Please do not deform the evap pipe.

• Attaching

1. Insert the evap pan under the evap pipe.
2. Insert the evap pan hole into the hook evap pan as well as press-fitting both sides.



Troubleshooting

The refrigerator does not operate.

- Check that the plug and its socket are in good condition.
- Check if there is any problem on main fuse and electrical system of the house.
- Check by unplug and wait for 5 minutes before plugging it back in.

The refrigerator does not cool enough.

- Check to be sure that the temperature control button is at the proper position.
- Check to see if the refrigerator is overloaded with stuff or there is any hot foodstuff refrigerated inside.
- Is the refrigerator exposed directly to sunlight or heat source?
- Is the refrigerator door completely closed?
- Is the refrigerator door opened frequently?

Vapor generated inside and outside the cabinet / surface of door.

- Condensation may appear on the surface of cabinet when humidity is high, e.g. during rainy season or the air circulation is not good.
- If there is condensation inside, check if the door is completely closed. Is the refrigerator frequently opened or left open for a long time? Is there any hot foodstuff refrigerated inside?

The refrigerator generates noise.

- Check if the refrigerator is located on a stable floor or is installed properly.
- Check if there is any object in contact with the refrigerator.
- Cracking sound within caused by the parts adjusting temperature which is normal.

LED lamp does not turn on.

- Please contact Panasonic service center.

Food becomes frozen

- Do you put the food near cold air duct?
- Do you adjust the temperature control at "Max"? Should Adjust to "Med" or "Min".



Troubleshooting

The ECONAVI lamp does not light properly.

ECONAVI does not operate.
(the ECONAVI lamp does not light)

- Are the temperature setting of refrigerator compartment set to something other than "Med" ?
- Did you open the doors frequently, or store very hot food?
- The learning function may automatically disable ECONAVI operation during times of frequent use.

ECONAVI operation is rarely performed.

- Is there a power failure?
If a power failure occurs, the leaning function data collected up until that will be lost. ECONAVI operation will rarely be performed until the learning function has collected the data again.

ECONAVI operation is stopped part way though.

- If for example, defrosting (auto) is turned on during ECONAVI operation, the normal cooling operation will need to be performed afterwards so ECONAVI operation may be stopped.
- The learning function may be sometimes restart the normal cooling operation.

ECONAVI operation is performed too often
(the ECONAVI lamp rarely turns off).

- Is the light intensity sensor hidden?
- Is there dirt scratches on the control panel (light intensity section)?
- ECONAVI operation may be performed while the refrigerator is being used depending on the conditions of use, but the cooling performance is maintained.



Specifications

Model No.		NR-BR307	NR-BR347
Freezer Star Rating		✱✱✱	
Capacity (L) (IEC 62552)	Total	296	342
	Freezer	92	92
	Refrigerator	204	250
Outside Dimensions Width x Depth x Height (mm)		600 x 629 x 1,546	600 x 629 x 1,726
Refrigerant Type		HFC-134a	
Net Weight (kg/lb)		51 / 112	53 / 117
Cooling System		Non-frost cooling.	
Rated Voltage (V) Rated Frequency (Hz)		Refer to the rating label put at the door.	

Panasonic Corporation
Web site : <http://panasonic.net/>

© Panasonic Appliances (Thailand) Co., Ltd. 2014