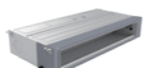


MODEL LINE-UP

The Ideal Air Conditioning Solutions For Offices, Educational Institutions, Restaurants And Retail Stores.

Capacity range [Btu/h]	CEILING DUCTED	CEILING & CONSOLE	OUTDOOR UNITS
18,000	 S-18PFB1H5B	 S-18PTB1H5B	 U-18PNB1H5
24,000	 S-24PFB1H5B	 S-24PTB1H5B	 U-24PNB1H5
30,000	 S-30PFB1H5B	 S-30PTB1H5B	 U-30PNB1H5
36,000	 S-36PFB1H5B	 S-36PTB1H5B	 U-36PNB1H8
48,000	 S-48PFB1H5B	 S-48PTB1H5B	 U-48PNB1H8
60,000	 S-60PFB1H5B	 S-60PTB1H5B	 U-60PNB1H8

Panasonic

SINGLE-SPLIT PACKAGED
AIR CONDITIONERS
2024/2025

Fresh series



Do not add or replace refrigerant other than the specified type. Manufacturer is not responsible for the damage and deterioration in safety due to usage of other refrigerant.



**Panasonic Air-conditioning Malaysia (PACMY)
Customer Call Centre**

A Division of Panasonic Malaysia Sdn. Bhd.
Lot 10, Japan 13/2, 46200 Petaling Jaya, Selangor Darul Ehsan
Tel: +603-7932 4189 Fax: +603-7932 4181
Email: aircon.cs@my.panasonic.com
www.panasonic.com/my

Website will be opened in Apr. 2024

SEA_PACNONINV R32_LL_2024

QUALITY AIR FOR LIFE

NON-INVERTER



CEILING & CONSOLE

- The slim design makes thickness only 235mm.



A Wireless remote controller is in the same package with the indoor unit.

CZ-RWCB1H (Wireless)



(Optional)

CZ-RTCB1H (Wired)

NON-INVERTER



Capacity (Btu/h)		18,000	24,000	30,000	36,000	48,000	60,000
Power Source	V/Phase/Hz	220-240V~, 1phase, 50Hz			380-415V~, 3phase, 50Hz		
Indoor		S-18PTB1H5B	S-24PTB1H5B	S-30PTB1H5B	S-36PTB1H5B	S-48PTB1H5B	S-60PTB1H5B
Outdoor		U-18PNB1H5	U-24PNB1H5	U-30PNB1H5	U-36PNB1H8	U-48PNB1H8	U-60PNB1H8
Cooling Capacity: Rated	kW	5.28	7.03	8.79	10.55	14.07	17.58
	Btu/h	18,000	24,000	30,000	36,000	48,000	60,000
Current	A	8.00	10.40	12.50	6.69	8.35	10.00
Power Input: Rated	kW	1.76	2.34	2.74	3.6	4.67	5.71
Efficiency Ratio	COP	3.00	3.00	3.21	2.93	3.01	3.08
	EER (Btu/h)/W	10.24	10.25	10.95	10.00	10.28	10.50
Indoor Unit							
Air Volume (Hi/Mi/Lo)	m ³ /min	15.8/11.6/9.3	18.3/13.3/11	25.3/21/13.3	25.3/21/13.3	35.8/31.6/22.5	35.8/31.6/22.5
	cfm	558/410/328	646/470/388	893/742/470	893/742/470	1,264/1,116/795	1,264/1,116/795
Sound Pressure Level (Hi/Mi/Lo)	dB (A)	44/38/33	46/40/35	50/46/42	50/46/42	52/47/43	52/47/43
Sound Power Level (Hi/Mi/Lo)	dB (A)	52/46/41	56/50/45	59/55/51	59/55/51	62/57/53	62/57/53
Dimension (HxWxD)	Indoor	mm	235×1,000×690	235×1,000×690	235×1,280×690	235×1,280×690	235×1,600×690
	Indoor Package	mm	325×1,080×770	325×1,080×770	325×1,360×770	325×1,360×770	325×1,680×770
Weight (Net/Gross)	kg	28.0/32.0	29.0/33.0	36.0/42.0	36.0/42.0	41.0/48.0	41.0/48.0
Outdoor Unit							
Sound Pressure Level	dB (A)	53	54	56	56	57	58
Sound Power Level	dB (A)	64	65	66	66	67	68
Dimension (HxWxD)	Outdoor	mm	545×800×315	655×825×310	700×900×350	805×970×395	805×970×395
	Outdoor Package	mm	620×920×400	725×945×435	770×1,020×430	890×1,105×495	890×1,105×495
Weight (Net/Gross)	kg	36.0/39.0	44.0/47.5	53.0/57.0	62.0/66.0	72.0/76.0	93.0/103.0
Piping Connection	Gas Pipe	mm [inch]	12.7 [1/2"]	15.88 [5/8"]	15.88 [5/8"]	15.88 [5/8"]	19.05 [3/4"]
	Liquid Pipe	mm [inch]	6.35 [1/4"]	9.52 [3/8"]	9.52 [3/8"]	9.52 [3/8"]	9.52 [3/8"]
Pipe Length (Max)	m	30	30	30	50	50	50
Elevation Difference	m	20	20	20	30	30	30
Maximum Chargeless Length (Max)	m	5	5	5	5	5	5
Additional Gas	g/m	30	50	50	50	50	50
Operating Range, Outdoor (Min-Max)	°C	17-49	17-49	17-49	17-49	17-49	17-49

CEILING DUCTED

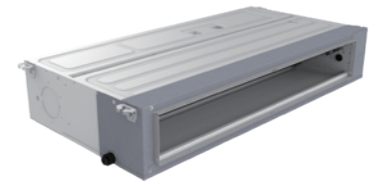
- Air intake from rear as standard.



A Wired remote controller is in the same package with the indoor unit.

CZ-RTCB1H (Wired)

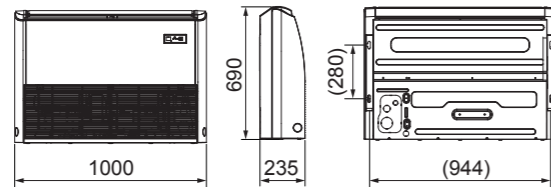
NON-INVERTER



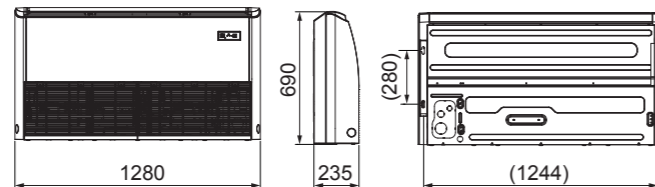
Capacity (Btu/h)		18,000	24,000	30,000	36,000	48,000	60,000
Power Source	V/Phase/Hz	220-240V~, 1phase, 50Hz			380-415V~, 3phase, 50Hz		
Indoor		S-18PFB1H5B	S-24PFB1H5B	S-30PFB1H5B	S-36PFB1H5B	S-48PFB1H5B	S-60PFB1H5B
Outdoor		U-18PNB1H5	U-24PNB1H5	U-30PNB1H5	U-36PNB1H8	U-48PNB1H8	U-60PNB1H8
Cooling Capacity: Rated	kW	5.28	7.03	8.79	10.55	14.07	17.58
	Btu/h	18,000	24,000	30,000	36,000	48,000	60,000
Current	A	8.00	10.40	12.50	6.69	8.35	10.00
Power Input: Rated	kW	1.73	2.34	2.74	3.6	4.67	5.71
Efficiency Ratio	COP	3.05	3.00	3.21	2.93	3.01	3.08
	EER (Btu/h)/W	10.41	10.24	10.95	10.00	10.27	10.51
External Static Pressure	Pa	50	50	50	50	80	80
Indoor Unit							
Air Volume (Hi/Mi/Lo)	m ³ /min	15/12.4/7.91	20.6/18.3/16.5	24.8/21.8/20.8	24.8/21.8/20.8	32.1/27.1/24.3	32.1/27.1/24.3
	cfm	530/438/279	727/646/583	876/770/735	876/770/735	1,134/957/858	1,134/957/858
Sound Pressure Level (Hi/Mi/Lo)	dB (A)	35/31/28	39/36/33	41/38/35	41/38/35	44/43/39	44/43/39
Sound Power Level (Hi/Mi/Lo)	dB (A)	43/39/36	47/44/41	51/48/45	51/48/45	54/52/49	54/52/49
Dimension (HxWxD)	Indoor	mm	200×1,000×460	245×1,000×700	245×1,000×700	245×1,000×700	245×1,400×700
	Indoor Package	mm	275×1,300×580	300×1,230×830	300×1,230×830	300×1,230×830	300×1,630×830
Weight (Net/Gross)	kg	24.0/28.0	32.0/37.0	32.0/37.0	32.0/37.0	40.0/47.0	40.0/47.0
Outdoor Unit							
Sound Pressure Level	dB (A)	53	54	56	56	57	58
Sound Power Level	dB (A)	64	65	66	66	67	68
Dimension (HxWxD)	Outdoor	mm	545×800×315	655×825×310	700×900×350	805×970×395	805×970×395
	Outdoor Package	mm	620×920×400	725×945×435	770×1,020×430	890×1,105×495	890×1,105×495
Weight (Net/Gross)	kg	36.0/39.0	44.0/47.5	53.0/57.0	62.0/66.0	72.0/76.0	93.0/103.0
Piping Connection	Gas Pipe	mm [inch]	12.7 [1/2"]	15.88 [5/8"]	15.88 [5/8"]	15.88 [5/8"]	19.05 [3/4"]
	Liquid Pipe	mm [inch]	6.35 [1/4"]	9.52 [3/8"]	9.52 [3/8"]	9.52 [3/8"]	9.52 [3/8"]
Pipe Length (Max)	m	30	30	30	50	50	50
Elevation Difference	m	20	20	20	30	30	30
Maximum Chargeless Length (Max)	m	5	5	5	5	5	5
Additional Gas	g/m	30	50	50	50	50	50
Operating Range, Outdoor (Min-Max)	°C	17-49	17-49	17-49	17-49	17-49	17-49

Dimensions

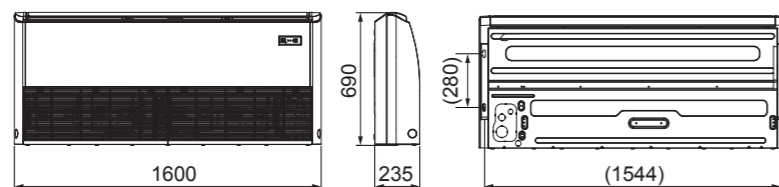
18,000 - 24,000 Btu/h



30,000 - 36,000 Btu/h

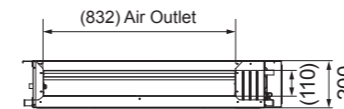


48,000 - 60,000 Btu/h

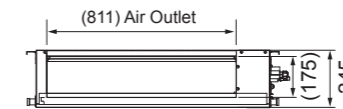


Dimensions

18,000 Btu/h



24,000 - 36,000 Btu/h



48,000 - 60,000 Btu/h

