

# 4-WAY CASSETTE

NEW

Model No.  
S-18PU1H5A-1 S-30PU1H5A-1  
S-22PU1H5A-1 S-34PU2H5-1  
S-25PU1H5A-1 S-43PU2H5-1  
S-28PU1H5A-1 S-48PU2H5-1



## TECHNICAL FOCUS

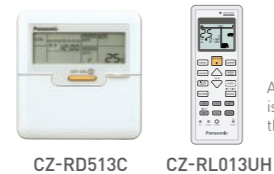
- Compact design
- Low sound levels
- DC fan motor for increased efficiency
- Powerful drain pump gives 850 mm lift
- Lightweight design
- nanoe™ X (CZ-CNEXU1)

## Accessories

### Panel



### Selectable Remote Controller



A wireless remote controller is in the same package with the indoor unit.

### nanoe™X Kit

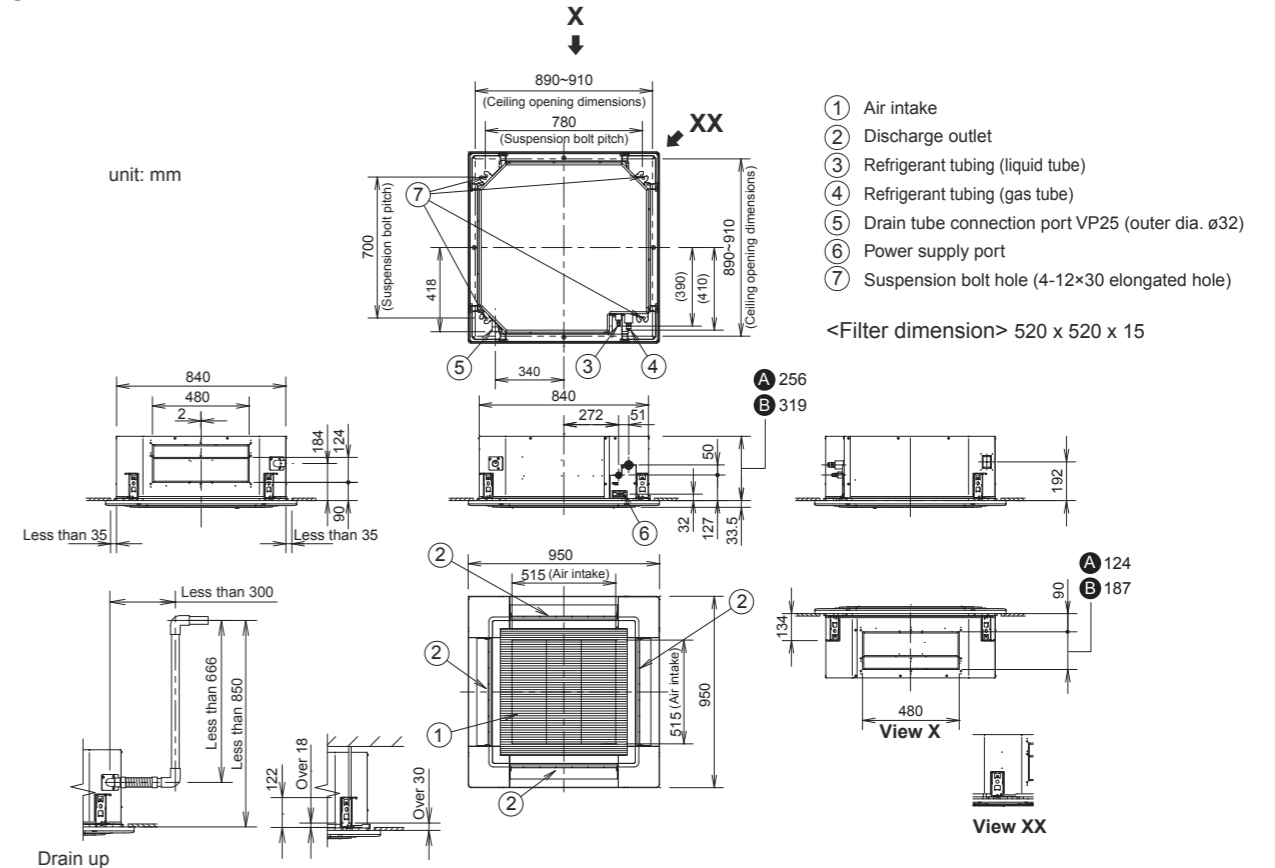


### Coner Panel



## Dimensions

- A [S-18PU1H5A-1 / S-22PU1H5A-1 / S-25PU1H5A-1 / S-28PU1H5A-1 / S-30PU1H5A-1]
- B [S-34PU2H5-1 / S-43PU2H5-1 / S-48PU2H5-1]



\* Adjust the suspension bolt length so that the gap from the lower ceiling surface becomes 30 mm or more (18 mm or more from the lower surface of the body) as shown in the figure. When the suspension bolt length is long, it hits the ceiling panel and installation is not possible.

Capacity [ Btu/h ]		18,500	23,000	25,000	28,000	30,000	30,000	37,000	42,600	45,600	50,000	55,000	
Power Source	V/Phase Hz	230 V, 1Ø Phase - 50 Hz						400 V, 3Ø phase - 50 Hz					
Indoor		S-18PU1H5A-1	S-22PU1H5A-1	S-25PU1H5A-1	S-28PU1H5A-1	S-30PU1H5A-1	S-30PU1H5A-1	S-34PU2H5-1	S-34PU2H5-1	S-43PU2H5-1	S-43PU2H5-1	S-48PU2H5-1	
Outdoor		U-18PV1H5-1	U-22PV1H5-1	U-25PV1H5-1	U-28PV1H5-1	U-30PV1H5-1	U-30PV1H8-1	U-35PV1H8-1	U-40PV1H8-1	U-45PV1H8-1	U-50PV1H8-1	U-55PV1H8-1	
Panel		CZ-KPU3H	CZ-KPU3H	CZ-KPU3H	CZ-KPU3H	CZ-KPU3H	CZ-KPU3H	CZ-KPU3H	CZ-KPU3H	CZ-KPU3H	CZ-KPU3H	CZ-KPU3H	
Cooling Capacity: Rated	kW	5.42	6.74	7.33	8.21	8.79	8.79	10.84	12.49	13.35	14.65	16.12	
	Btu/h	18,500	23,000	25,000	28,000	30,000	30,000	37,000	42,600	45,600	50,000	55,000	
Current	A	7.5	9.1	9.8	12.6	13.0	5.1	6.4	6.9	6.9	8.5	9.0	
Power Input: Rated	kW	1.69	2.05	2.22	2.84	2.93	2.93	3.76	4.07	4.05	4.89	5.20	
	W/W	3.2	3.29	3.30	2.89	3.00	3.00	2.88	3.07	3.30	3.00	3.10	
EER		10.91	11.22	11.25	9.85	10.23	10.23	9.82	10.47	11.26	10.22	10.58	
	Btu/hW												
<b>Indoor Unit</b>													
Air Volume	m <sup>3</sup> /min	24.0	25.0	25.0	25.0	25.0	25.0	32.0	32.0	36.4	36.4	36.4	
	cfm	847	882	882	882	882	882	1,130	1,130	1,285	1,285	1,285	
Sound Pressure Level [Hi/Lo]	dB [A]	41 / 32	41 / 32	41 / 32	41 / 33	41 / 33	41 / 33	44 / 37	44 / 37	47 / 39	47 / 39	47 / 41	
Sound Power Level [Hi/Lo]	dB	56 / 47	56 / 47	56 / 47	56 / 48	56 / 48	56 / 48	59 / 52	59 / 52	62 / 54	62 / 54	62 / 56	
Dimension	Indoor [H×W×D]	mm	256 × 840 × 840	256 × 840 × 840	256 × 840 × 840	256 × 840 × 840	256 × 840 × 840	319 × 840 × 840	319 × 840 × 840	319 × 840 × 840	319 × 840 × 840	319 × 840 × 840	
	Panel [H×W×D]	mm	44 × 950 × 950	44 × 950 × 950	44 × 950 × 950	44 × 950 × 950	44 × 950 × 950	44 × 950 × 950	44 × 950 × 950	44 × 950 × 950	44 × 950 × 950	44 × 950 × 950	
Net Weight	Indoor	kg	21	22	22	22	22	24	24	24	24	24	
	Panel	kg	4	4	4	4	4	4	4	4	4	4	
<b>Outdoor Unit</b>													
Sound Pressure Level	dB [A]	52	52	52	56	56	57	56	56	56	56	56	
Sound Power Level	dB	68	68	68	71	71	71	70	70	70	70	70	
Dimension	Outdoor [H×W×D]	mm	695 × 875 × 320	695 × 875 × 320	695 × 875 × 320	695 × 875 × 320	695 × 875 × 320	750 × 875 × 345	996 × 980 × 370	996 × 980 × 370	996 × 980 × 370	1,170 × 900 × 320	
Net Weight		kg	44	55	55	57	57	58	86	86	86	94	
Piping Connection	Gas Pipe	mm (inch)	12.70 (1/2")	15.88 (5/8")	15.88 (5/8")	15.88 (5/8")	15.88 (5/8")	15.88 (5/8")	15.88 (5/8")	15.88 (5/8")	15.88 (5/8")	15.88 (5/8")	
	Liquid Pipe	mm (inch)	6.35 (1/4")	9.52 (3/8")	9.52 (3/8")	9.52 (3/8")	9.52 (3/8")	9.52 (3/8")	9.52 (3/8")	9.52 (3/8")	9.52 (3/8")	9.52 (3/8")	
Pipe Length	Min-Max	m	7.5 - 30	7.5 - 30	7.5 - 30	7.5 - 45	7.5 - 45	7.5 - 50	7.5 - 50	7.5 - 50	7.5 - 50	7.5 - 50	
Elevation Difference		m	20	20	20	25	25	30	30	30	30	30	
Maximum Chargeless Length	Max	m	7.5	7.5	7.5	7.5	7.5	30	30	30	30	30	
Additional Gas		g/m	20	25	25	30	30	50	50	50	50	50	
Operating Range, Outdoor	Min-Max	°C	16 - 43	16 - 43	16 - 43	16 - 43	16 - 43	16 - 43	16 - 43	16 - 43	16 - 43	16 - 43	