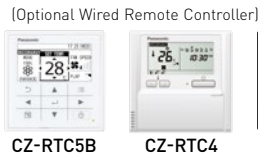


DELUXE 4-WAY CASSETTE

- With the further advanced air purification technology of nanoe™ X Generator Mark 3.
- Powerful industry-leading, 360° wide, comfortable airflow.
- The drain pump can pump water up to a height of 850 mm, making drain pipe layout easy.



nanoe™ X
Generator Mark3

DELUXE

Specifications of R32 DELUXE Series **R32**

Capacity [Btu/h(Phase)]		17,100	20,500	24,200	34,100	42,700	42,700(3)	47,800	47,800(3)
Power Source	V/Phase Hz	230V, 10 Phase - 50Hz			400V, 30 Phase - 50Hz			230V, 10 Phase - 50Hz	
Indoor Unit		S-1821PU3HA-1	S-1821PU3HA-1	S-2430PU3HA-1	S-3448PU3HA-1	S-3448PU3HA-1	S-3448PU3HA-1	S-3448PU3HA-1	S-3448PU3HA-1
Outdoor Unit		U-18PRH1H5-1	U-21PRH1H5-1	U-24PRH1H5-1	U-34PRH1H5-1	U-43PRH1H5-1	U-43PRH1H8-1	U-48PRH1H5-1	U-48PRH1H8-1
Panel		CZ-KPU3H	CZ-KPU3H	CZ-KPU3H	CZ-KPU3H	CZ-KPU3H	CZ-KPU3H	CZ-KPU3H	CZ-KPU3H
Cooling Capacity: Rated [Min-Max]	kW	5.00 [2.00-6.00]	6.00 [2.00-6.30]	7.10 [2.10-8.00]	10.00 [3.80-11.20]	12.50 [3.80-14.00]	12.50 [3.80-14.00]	14.00 [5.30-15.50]	14.00 [5.30-15.50]
	Btu/h	17,100 [6,820-20,500]	20,500 [6,820-21,500]	24,200 [7,170-27,300]	34,100 [13,000-38,200]	42,700 [13,000-47,800]	42,700 [13,000-47,800]	47,800 [18,100-52,900]	47,800 [18,100-52,900]
Current: Rated [Max]	A	4.1 [9.1]	5.7 [11.0]	7.0 [12.0]	11.1 [25.5]	16.2 [26.0]	5.3 [10.5]	19.4 [28.0]	6.4 [11.5]
Power Input: Rated [Min-Max]	kW	0.90 [0.26-1.35]	1.27 [0.26-1.65]	1.57 [0.28-2.25]	2.35 [0.62-3.00]	3.42 [0.63-4.10]	3.42 [0.63-4.10]	4.10 [0.96-4.90]	4.10 [0.96-4.90]
CSPF		7.50	7.10	6.80	6.60	6.30	6.30	5.70	5.70
COP/EER	W/W	5.56	4.72	4.52	4.26	3.65	3.65	3.41	3.41
	Btu/hW	19.00	16.14	15.41	14.51	12.49	12.49	11.66	11.66
Indoor Unit									
Air Volume	m³/min	28.5	28.5	28.5	36.4	36.4	36.4	36.4	36.4
	cfm	1,006	1,006	1,006	1,285	1,285	1,285	1,285	1,285
Sound Pressure Level [Hi/L0]	dB [A]	46 / 35	46 / 35	46 / 35	47/41	47 / 41	47 / 41	47 / 41	47 / 41
Sound Power Level [Hi/L0]	dB	61 / 50	61 / 50	61 / 50	62/56	62 / 56	62 / 56	62 / 56	62 / 56
Dimension	Indoor [HxWxD]	mm	256 x 840 x 840	256 x 840 x 840	256 x 840 x 840	319 x 840 x 840	319 x 840 x 840	319 x 840 x 840	319 x 840 x 840
	Panel [HxWxD]	mm	44 x 950 x 950	44 x 950 x 950	44 x 950 x 950	44 x 950 x 950	44 x 950 x 950	44 x 950 x 950	44 x 950 x 950
Net Weight	Indoor	kg	21	21	21	24	24	24	24
	Panel	kg	5	5	5	5	5	5	5
Outdoor Unit									
Sound Pressure Level	dB [A]	50	51	53	54	57	57	58	58
Sound Power Level	dB	69	70	72	73	76	76	77	77
Dimension	Outdoor [HxWxD]	mm	695 x 875 x 320	695 x 875 x 320	695 x 875 x 320	996 x 980 x 370	996 x 980 x 370	996 x 980 x 370	996 x 980 x 370
Net Weight		kg	39	39	39	69	69	75	73
Piping Connection	Gas Pipe	mm (inch)	12.70 [1/2]	12.70 [1/2]	15.88 [5/8]	15.88 [5/8]	15.88 [5/8]	15.88 [5/8]	15.88 [5/8]
	Liquid Pipe	mm (inch)	6.35 [1/4]	6.35 [1/4]	9.52 [3/8]	9.52 [3/8]	9.52 [3/8]	9.52 [3/8]	9.52 [3/8]
Pipe Length	Min-Max	m	5 - 50	5 - 50	5 - 50	5 - 50	5 - 50	5 - 50	5 - 50
Elevation Difference		m	30	30	30	30	30	30	30
Maximum Chargeless Length	Max	m	30	30	30	30	30	30	30
Additional Gas	g/m	15	15	25	25	25	25	25	25
Operation Range, Outdoor	Min-Max	°C	16-52	16-52	16-52	16-52	16-52	16-52	16-52

* Specifications are subject to change without notice. Please refer to technical documents for more details.

* The sound pressure level is measured in accordance with JIS C 9612 and JIS B 8616. * DELUXE series indoor units can only be connected to outdoor units of the same series.

What's New of nanoe™ X Generator Mark 3

48 Trillion Hydroxyl Radicals Generated

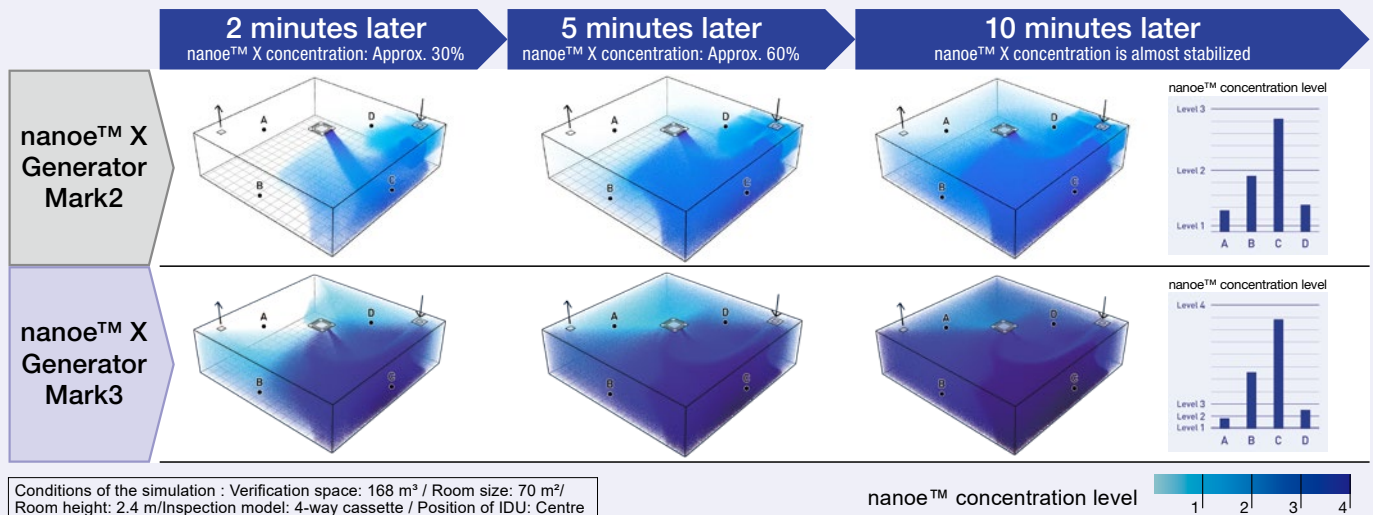
The amount of hydroxyl radicals generated increased 100 times, compared to original nanoe™.

Higher Concentration, Even in Large Spaces

Greater effectiveness even in large spaces of more than 100 m².

nanoe™ X Concentration Simulation

Higher concentration levels of generator mark 3 than mark 2.



Conditions of the simulation : Verification space: 168 m³ / Room size: 70 m² / Room height: 2.4 m/Inspection model: 4-way cassette / Position of IDU: Centre

* There are 7 key benefits provided by nanoe which commence when concentration reaches Level 1. The concentration level affects the speed at which the benefits occur. Concentration level 2 is 10 times the concentration of level 1, and concentration level 3 is 20 times the concentration of level 1. ** The results shown are for simulation purpose only and concentration may vary due to actual room conditions

DELUXE / STANDARD ADAPTIVE DUCTED

- Air intake from rear as standard. Industry-leading horizontal and vertical design.
- Powerful 150Pa ESP and space saving 250 mm height, filter included.
- Built-in Drain pump and selectable air inlet position (bottom and rear).



Selectable Remote Controller



CZ-RTC5B



CZ-RTC6



CZ-RTC6 (Standard)
CZ-RTC6BL [BLE]
CZ-RTC6BLW [BLE&WLAN]



CZ-CAPWFC1

[Optional]
If not use
CZ-RTC6BLW,
The adaptor also
can be used.

nanoeX
Generator Mark2

DELUXE

Specifications of R32 DELUXE Series R32

Capacity [Btu/h(Phase)]		17,100	20,500	24,200	34,100	42,700	42,700[3]	47,800	47,800[3]
Power Source	V/Phase Hz	230V, 10 Phase - 50Hz							
Indoor Unit		S-1821PF3H	S-1821PF3H	S-2430PF3H	S-3448PF3H	S-3448PF3H	S-3448PF3H	S-3448PF3H	S-3448PF3H
Outdoor Unit		U-18PRH1H5-1	U-21PRH1H5-1	U-24PRH1H5-1	U-34PRH1H5-1	U-43PRH1H5-1	U-43PRH1H8-1	U-48PRH1H5-1	U-48PRH1H8-1
Cooling Capacity: Rated [Min-Max]	kW	5.00 [1.60-6.00]	6.00 [1.60-6.30]	7.10 [1.80-8.00]	10.00 [3.80-11.20]	12.50 [3.80-14.00]	12.50 [3.80-14.00]	14.00 [5.30-15.50]	14.00 [5.30-15.50]
	Btu/h	17,100 [5,460-20,500]	20,500 [5,460-21,500]	24,200 [6,140-27,300]	34,100 [13,000-38,200]	42,700 [13,000-47,800]	42,700 [13,000-47,800]	47,800 [18,100-52,900]	47,800 [18,100-52,900]
Current: Rated [Max]	A	5.3 [9.1]	7.1 [11.0]	8.0 [12.0]	11.3 [25.5]	17.0 [26.0]	5.6 [10.5]	20.5 [28.0]	6.7 [11.5]
Power Input: Rated [Min-Max]	kW	1.16 [0.24-1.55]	1.58 [0.24-1.80]	1.80 [0.30-2.35]	2.40 [0.65-3.08]	3.59 [0.65-4.35]	3.59 [0.65-4.35]	4.34 [0.96-5.15]	4.34 [0.96-5.15]
	CSPF	5.90	5.60	6.10	6.40	5.45	5.45	5.55	5.55
COP/EER	W/W	4.31	3.80	3.94	4.17	3.48	3.48	3.23	3.23
	Btu/hW	14.74	12.97	13.44	14.21	11.89	11.89	11.01	11.01
Indoor Unit									
Air Volume	m ³ /min cfm	16.0 565	16.0 565	21.0 740	36.0 1,270	36.0 1,270	36.0 1,270	36.0 1,270	36.0 1,270
External static pressure	Pa	30 [10-150]	30 [10-150]	30 [10-150]	50 [10-150]	50 [10-150]	50 [10-150]	50 [10-150]	50 [10-150]
Sound Pressure Level [Hi/L0]	dB [A]	35 / 29	35 / 29	35 / 29	40 / 30	40 / 30	40 / 30	40 / 30	40 / 30
Sound Power Level [Hi/L0]	dB	58 / 52	58 / 52	58 / 52	63 / 53	63 / 53	63 / 53	63 / 53	63 / 53
Dimension	Indoor (HxWxD)	mm	250 x 800 x 730	250 x 800 x 730	250 x 1,000 x 730	250 x 1,400 x 730	250 x 1,400 x 730	250 x 1,400 x 730	250 x 1,400 x 730
	Net Weight	Indoor	kg	25	25	30	39	39	39
Outdoor Unit									
Sound Pressure Level	dB [A]	50	51	53	54	57	57	58	58
Sound Power Level	dB	69	70	72	73	76	76	77	77
Dimension	Outdoor (HxWxD)	mm	695 x 875 x 320	695 x 875 x 320	695 x 875 x 320	996 x 980 x 370	996 x 980 x 370	996 x 980 x 370	996 x 980 x 370
Net Weight		kg	39	39	39	69	69	75	73
Piping Connection	Gas Pipe	mm (inch)	12.70 [1/2]	12.70 [1/2]	15.88 [5/8]	15.88 [5/8]	15.88 [5/8]	15.88 [5/8]	15.88 [5/8]
	Liquid Pipe	mm (inch)	6.35 [1/4]	6.35 [1/4]	9.52 [3/8]	9.52 [3/8]	9.52 [3/8]	9.52 [3/8]	9.52 [3/8]
Pipe Length	Min-Max	m	5 - 50	5 - 50	5 - 50	5 - 50	5 - 50	5 - 50	5 - 50
Elevation Difference		m	30	30	30	30	30	30	30
Maximum Chargeless Length	Max	m	30	30	30	30	30	30	30
Additional Gas		g/m	15	15	25	25	25	25	25
Operation Range, Outdoor	Min-Max	°C	16-52	16-52	16-52	16-52	16-52	16-52	16-52

* Specifications are subject to change without notice. Please refer to technical documents for more details.

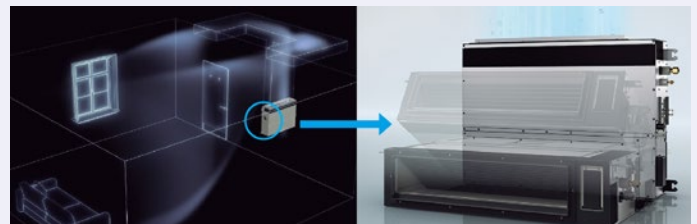
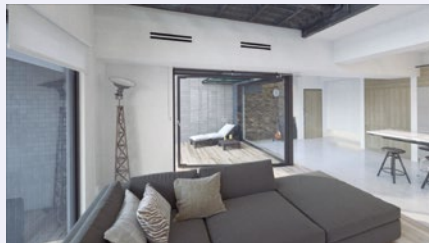
* The sound pressure level is measured in accordance with JIS C 9612 and JIS B 8616. * DELUXE series indoor units can only be connected to outdoor units of the same series.

Flexible Installation Adaptive Ducted

New NX Series Adaptive Ducted units can be mounted not only horizontally but also vertically without the need for alterations. Our groundbreaking drain pan design delivers a new level of flexibility in an industry-leading vertical installation.



Product information



Horizontal

Vertical

Compact Body with Powerful 150 Pa ESP

The indoor units have also been completely renewed, offering a 40 mm height reduction to only 250 mm and a weight reduction of up to 10%, all while maintaining the same powerful 150 Pa.

* Compared to conventional model.

Space saving 250 mm height



150Pa

Height **250** mm Weight* 30 kg
Note: In the case of 6.0kW and 7.0kW.

DELUXE / STANDARD CEILING EXPOSED

- The slim design makes thickness only 235 mm.
- Compact Looking, Stylish, One-Motion Design.
- Comfortable, Long-Distance Airflow Distribution.



(Accessory)



(Optional Wired Remote Controller)



CZ-RTC6
CZ-RTC6BL [BLE]
CZ-RTC6BLW [BLE&WLAN]



[Optional]
If not use
CZ-RTC6BLW,
The adaptor also
can be used.

nanoeX
Generator Mark2

DELUXE

Specifications of R32 DELUXE Series R32

Capacity [Btu/h(Phase)]		17,100	20,500	24,200	34,100	42,700	42,700[3]	47,800	47,800[3]
Power Source	V/Phase Hz	230V, 10 Phase - 50Hz			400V, 30 Phase - 50Hz		230V, 10 Phase - 50Hz		400V, 30 Phase - 50Hz
Indoor Unit		S-1821PT3H	S-1821PT3H	S-2430PT3H	S-3448PT3H	S-3448PT3H	S-3448PT3H	S-3448PT3H	S-3448PT3H
Outdoor Unit		U-18PRH1H5-1	U-21PRH1H5-1	U-24PRH1H5-1	U-34PRH1H5-1	U-43PRH1H5-1	U-43PRH1H8-1	U-48PRH1H5-1	U-48PRH1H8-1
Cooling Capacity: Rated [Min-Max]	kW	5.00 [1.80-6.00]	6.00 [1.80-6.30]	7.10 [1.80-8.00]	10.00 [3.80-11.20]	12.50 [3.80-14.00]	12.50 [3.80-14.00]	14.00 [5.30-15.50]	14.00 [5.30-15.50]
	Btu/h	17,100 [6,140-20,500]	20,500 [6,140-21,500]	24,200 [6,140-27,300]	34,100 [13,000-38,200]	42,700 [13,000-47,800]	42,700 [13,000-47,800]	47,800 [18,100-52,900]	47,800 [18,100-52,900]
Current: Rated [Max]	A	4.9 [9.1]	6.5 [11.0]	7.5 [12.0]	11.7 [25.5]	17.7 [26.0]	5.8 [10.5]	20.0 [28.0]	6.6 [11.5]
Power Input: Rated [Min-Max]	kW	1.08 [0.27-1.43]	1.44 [0.27-1.72]	1.70 [0.25-2.15]	2.47 [0.68-3.04]	3.75 [0.68-4.40]	3.75 [0.68-4.40]	4.24 [0.94-5.00]	4.24 [0.94-5.00]
CSPF		7.20	6.70	6.85	6.05	5.50	5.50	5.40	5.40
COP/EER	W/W	4.63	4.17	4.18	4.05	3.33	3.33	3.30	3.30
	Btu/h/W	15.83	14.24	14.24	13.81	11.39	11.39	11.27	11.27
Indoor Unit									
Air Volume	m ³ /min	15.0	15.0	21.0	35.0	35.0	35.0	35.0	35.0
	cfm	530	530	740	1,235	1,235	1,235	1,235	1,235
Sound Pressure Level [Hi/L0]	dB [A]	38 / 29	38 / 29	40 / 32	46 / 38	46 / 38	46 / 38	46 / 38	46 / 38
Sound Power Level [Hi/L0]	dB	56 / 47	56 / 47	58 / 50	64 / 56	64 / 56	64 / 56	64 / 56	64 / 56
Dimension	Indoor [HxWxD]	mm	235 x 960 x 690	235 x 960 x 690	235 x 1,275 x 690	235 x 1,590 x 690	235 x 1,590 x 690	235 x 1,590 x 690	235 x 1,590 x 690
Net Weight	Indoor	kg	26	26	34	40	40	40	40
Outdoor Unit									
Sound Pressure Level	dB [A]	50	51	53	54	57	57	58	58
Sound Power Level	dB	69	70	72	73	76	76	77	77
Dimension	Outdoor [HxWxD]	mm	695 x 875 x 320	695 x 875 x 320	695 x 875 x 320	996 x 980 x 370	996 x 980 x 370	996 x 980 x 370	996 x 980 x 370
Net Weight		kg	39	39	39	69	69	75	73
Piping Connection	Gas Pipe	mm (inch)	12.70 [1/2]	12.70 [1/2]	15.88 [5/8]	15.88 [5/8]	15.88 [5/8]	15.88 [5/8]	15.88 [5/8]
	Liquid Pipe	mm (inch)	6.35 [1/4]	6.35 [1/4]	9.52 [3/8]	9.52 [3/8]	9.52 [3/8]	9.52 [3/8]	9.52 [3/8]
Pipe Length	Min-Max	m	5 - 50	5 - 50	5 - 50	5 - 50	5 - 50	5 - 50	5 - 50
Elevation Difference		m	30	30	30	30	30	30	30
Maximum Chargeless Length	Max	m	30	30	30	30	30	30	30
Additional Gas		g/m	15	15	25	25	25	25	25
Operation Range, Outdoor	Min-Max	°C	16-52	16-52	16-52	16-52	16-52	16-52	16-52

* Specifications are subject to change without notice. Please refer to technical documents for more details.

* The sound pressure level is measured in accordance with JIS C 9612 and JIS B 8616. * DELUXE series indoor units can only be connected to outdoor units of the same series.

Advantages of Ceiling Exposed

Comfortable, Long-Distance Airflow Distribution

The shape of the outlet has been optimised to provide long-distance air flow distribution.

Even in long rooms, air flow reaches every corner for exceptionally comfortable air conditioning.

