

# Panasonic

Scan here to learn more



## RESIDENTIAL AIR CONDITIONERS X-DELUXE INVERTER (RU) (CHAIN STORE EXCLUSIVE)



### OUTDOOR



CU-RU9AKH



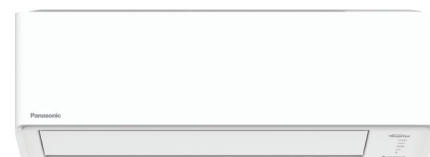
CU-RU12AKH



CU-RU18AKH-B  
CU-RU24AKH



CU-RU28AKH



X-DELUXE INVERTER

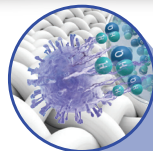


# QUALITY AIR FOR LIFE

## AIR PURIFICATION

### Better Indoor Air Quality

nanoe™ X effectively reduces odours and inhibits pollutants in the air and on surfaces, as well as moisturising your skin & hair. Activate nanoe™ X around the clock for safer and healthier indoor air.



nanoe™ X effectively inhibits  
**ADHERED & AIRBORNE  
POLLUTANTS\***



\*1 Scan here to learn more

**nanoe™ X**  
**Generator Mark2**

### 7 Effects of nanoe™ X



Bacteria & Viruses



Mould



Allergens



Pollen



Hazardous Substances



Deodorises  
Odours



Moisturises  
Skin & Hair

### Provide Fresh and Clean Air to the Room

Inside cleaning works inside of an indoor unit by removing moisture, and releases nanoe™ X to inhibit bacteria & viruses.

**INSIDE  
CLEANING**  
ON DEMAND

\*2 Testing Organisation: Protectea Ltd • Test subject: Bacteria (Escherichia coli NBRC3301) and Virus (Escherichia coli Phage QB NBRC20012) • Tested time: 2.5 hours • Test Result: 99% inhibited (compared to non-operation) • Test Report No: PR190803 (Filter & Evaporator); PR191102 (Air Outlet)

**99%<sup>\*\*2</sup>  
INHIBITED**

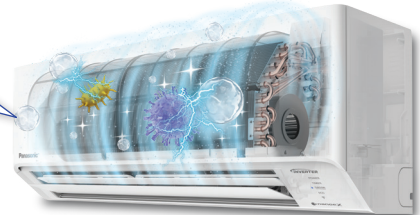


Bacteria



Virus

on evaporator, filter & air outlet



## PM2.5 REMOVAL

### Remove Dust Particles (PM2.5)

nanoe-G effectively removes 99%\*3 of dust particles by releasing negative ions to capture dust particles sized as small as PM2.5, carrying them back to the filter to deliver a clean space.

**nanoe-G**



\*3 • Testing Organisation: FCG Research Institute, Inc. • Test Subject: Cigarette smoke (as PM2.5) • Test Volume: 23m³ • Test Result: Removed by 99% (compared to the initial concentration) • Test Report No: 25034

## CONNECTIVITY

### Connect & Control Your AC Conveniently Anywhere, Anytime

Control multiple air conditioners with built-in Wi-Fi in one or multiple locations with just one device when you are home or away.



Comfort Cloud App



BUILT-IN  
EASY CONNECT



**SMART CONTROL**  
Connect to multiple units in multiple locations



**SMART EFFICIENCY**  
Monitor and compare energy consumption



**SMART ASSIST**  
Receive error notifications



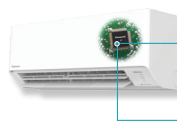
**SMART COMFORT**  
Remotely access all AC features



## EFFICIENCY

### Powerful Performance with Efficiency

Panasonic's Inverter air conditioners integrate DC motor to offer better performance in terms of greater energy savings, better comfort and quiet operation. Inverter technology minimises temperature fluctuation to save energy without compromising comfort.



### Intelligently balances energy savings and comfort

ECO mode with A.I. Control intelligently learns and judges based on room condition and heat source to optimise energy savings and comfort level.

\*5 Comparison of ECO mode & normal mode by using 1.5HP Inverter model.

### Benefits of Panasonic Inverter vs Non-Inverter



### Save On Electricity Bill

Panasonic's Inverter air conditioners are able to precisely control the temperature to provide better efficiency with optimum performance, saving you money in the long run.



### Better Comfort

Varying the speed of compressor according to temperature changes to minimise fluctuations in temperature, so you can enjoy total cooling comfort while saving energy.



### Quiet Operation

Smooth operation and noise level as low as 19dB(A)\*6.



\*6 19dB(A) noise level only applicable to 1.0HP X-DELUXE INVERTER.

\*4 52% energy saving result only applicable to 2.5HP X-DELUXE INVERTER, Comparison with lowest 2-star product.

## COMFORT

### POWERFUL



### Instant Powerful Cooling

POWERFUL mode cools your room faster by 18%\*7 during start-up to bring you cooling comfort instantly on a hot day.

\*7 Comparison of POWERFUL mode & normal cool mode by using 1.5HP Inverter model.

### AEROWINGS

**Sub-Flap**  
Compresses and concentrates cool air

**Outer Flap**  
Helps to deliver airflow further



### Comfort Cooling Environment

AEROWINGS delivers cooling comfort across the room by concentrating cool air, delivering faster and further airflow using 2 flaps.

## DURABILITY



**BLUE FIN  
CONDENSER**

**COPPER TUBE  
CONDENSER**

### Durable Outdoor Units

Panasonic's outdoor units are equipped with Blue Fin and Copper Tube condenser, a corrosion resistant outdoor coating, plus water resistant printed circuit board for protection against corrosion and different conditions.



## X-DELUXE *INVERTER* Single-Split Type



CS-RU9AKH-1 | CS-RU12AKH-1



CS-RU18AKH-1 | CS-RU24AKH-1 | CS-RU28AKH-1



Wireless  
(Standard)



Wired  
CZ-RD514C  
(Optional)



Wireless  
(Standard)



Wired  
CZ-RD514C  
(Optional)



MODEL	INDOOR UNIT [50Hz]		CS-RU9AKH-1	CS-RU12AKH-1	CS-RU18AKH-1	CS-RU24AKH-1	CS-RU28AKH-1
	OUTDOOR UNIT		CU-RU9AKH	CU-RU12AKH	CU-RU18AKH-B	CU-RU24AKH	CU-RU28AKH
Cooling Capacity	(min-max)	kW	2.65 [0.90-3.40]	3.52 [1.02-4.10]	5.30 [1.10-6.00]	6.25 [1.12-7.18]	7.10 [1.25-8.50]
	(min-max)	Btu/h	9,040 [3,070-11,600]	12,000 [3,480-14,000]	18,100 [3,750-20,500]	21,300 [3,820-24,500]	24,200 [4,260-29,000]
EER	(min-max)	Btu/hW	12.05 [13.64-11.26]	11.65 [12.65-11.11]	11.24 [12.93-11.20]	11.83 [15.28-11.78]	12.10 [12.17-10.74]
	(min-max)	W/W	3.53 [4.00-3.30]	3.42 [3.71-3.25]	3.29 [3.79-3.28]	3.47 [4.48-3.45]	3.55 [3.57-3.15]
CSPF		W/W	5.57 [5★]	5.41 [5★]	5.91 [5★]	5.99 [5★]	6.02 [5★]
Electrical Data	Voltage	V	220-240	220-240	220-240	220-240	220-240
	Current	A	3.70-3.40	4.80-4.40	7.40-6.80	8.30-7.60	9.20-8.40
	Power Input (min-max)	W	750 [225-1,030]	1,030 [275-1,260]	1,610 [290-1,830]	1,800 [250-2,080]	2,000 [350-2,700]
Moisture Removal		L/h	1.6	2.0	2.9	3.5	4.1
		Pt/h	3.4	4.2	6.1	7.4	8.7
Air Circulation	Indoor	m <sup>3</sup> /min [ft <sup>3</sup> /min]	10.3 [365]	11.0 [390]	19.3 [680]	19.9 [700]	21.0 [740]
	Outdoor	m <sup>3</sup> /min [ft <sup>3</sup> /min]	26.7 [940]	30.6 [1,080]	39.3 [1,390]	34.9 [1,230]	45.9 [1,620]
Noise Level	Indoor (H / L / Q-Lo)	dB (A)	38/26/19	40/26/21	44/32/27	45/34/29	47/37/34
	Outdoor (H)	dB (A)	47	48	50	51	53
Dimensions Indoor (Outdoor)	Height	mm	290 [511]	290 [542]	295 [619]	295 [619]	295 [695]
		inch	11-7/16 [20-1/8]	11-7/16 [21-11/32]	11-5/8 [24-3/8]	11-5/8 [24-3/8]	11-5/8 [27-3/8]
	Width	mm	765 [650]	765 [780]	1,060 [824]	1,060 [824]	1,060 [875]
		inch	30-1/8 [25-19/32]	30-1/8 [30-23/32]	41-3/4 [32-15/32]	41-3/4 [32-15/32]	41-3/4 [34-15/32]
	Depth	mm	214 [230]	214 [289]	249 [299]	249 [299]	249 [320]
		inch	8-7/16 [9-1/16]	8-7/16 [11-13/32]	9-13/16 [11-25/32]	9-13/16 [11-25/32]	9-13/16 [12-5/8]
Net Weight	Indoor	kg (lb)	8 [18]	8 [18]	12 [26]	12 [26]	13 [29]
	Outdoor	kg (lb)	18 [40]	22 [49]	29 [64]	32 [71]	43 [95]
Refrigerant Pipe Diameter	Liquid Side	mm	ø 6.35	ø 6.35	ø 6.35	ø 6.35	ø 6.35
		inch	1/4	1/4	1/4	1/4	1/4
	Gas Side	mm	ø 9.52	ø 9.52	ø 12.70	ø 12.70	ø 15.88
		inch	3/8	3/8	1/2	1/2	5/8
Pipe Extension	Chargeless Pipe Length	m	7.5	7.5	10.0	10.0	10.0
	Maximum Pipe Length	m	20	20	30	30	30
	Maximum Elevation Length	m	15	15	20	20	20
	Additional Refrigerant Gas*	g/m	10	10	15	15	25
Power Supply			Indoor	Indoor	Indoor	Indoor	Outdoor

\*When pipes are not extended from the chargeless pipe length, the required amount of refrigerant is already in the unit.

## OUTDOOR UNIT



CU-RU9AKH



CU-RU12AKH



CU-RU18AKH-B  
CU-RU24AKH



CU-RU28AKH



- Please read the Installation Instructions carefully before installing the unit, and the Operating Instructions before using it.
- Specifications are subject to change without prior notice.
- The contents of this catalogue are accurate as of March 2024.
- Due to printing considerations, actual colours may vary slightly from those shown.
- All graphics are provided solely for the purpose of illustrating a point.



Do not add or replace refrigerant other than the specified type.  
Manufacturer is not responsible for damage or deterioration in  
safety due to usage of other refrigerant.

Authorised Dealer

**Panasonic Air-Conditioning Malaysia (PACMY)**  
**A Division Company of Panasonic Malaysia Sdn. Bhd.**

Registration No. 197601000977 [26975-W]



**Customer Care Center**

Lot 10, Jalan 13/2, 46200 Petaling Jaya,  
Selangor Darul Ehsan.  
Tel: +603-7932 4189 Fax: +603-7932 4181  
Email: [aircon.cs@my.panasonic.com](mailto:aircon.cs@my.panasonic.com)  
Website: [www.panasonic.com.my](http://www.panasonic.com.my)