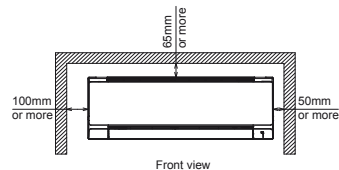
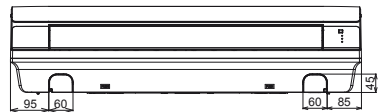
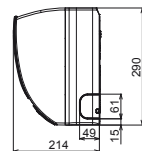
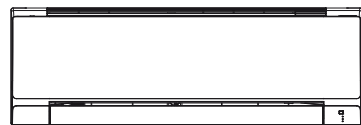
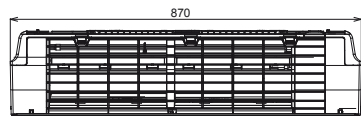
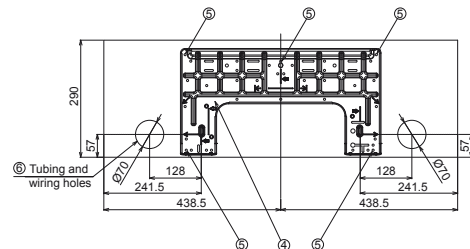
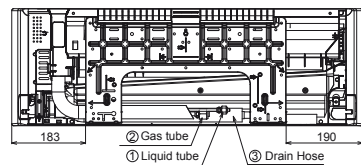


K2 (22-36) TYPE WALL MOUNTED Dimensions

SIZE 22-36



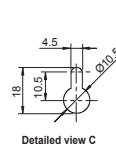
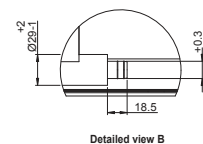
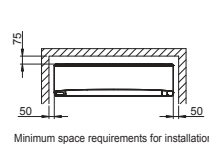
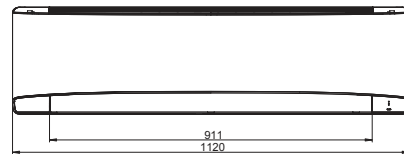
- 1 Refrigerant tubing (liquid tube) $\phi 6.35$ (flared)
- 2 Refrigerant tubing (gas tube) $\phi 12.7$ (flared)
- 3 Drain hose (outer dia. $\phi 16$)
- 4 Rear panel (PL BACK)
- 5 Rear panel fixing holes ($\phi 5$ holes or 5X13 oval holes)
- 6 Tubing and wiring holes ($\phi 70$)



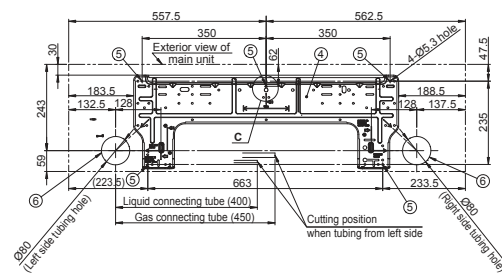
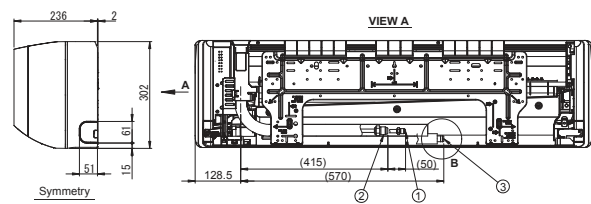
unit: mm

K2 (45-106) TYPE WALL MOUNTED Dimensions

SIZE 45-106



- 1 Refrigerant tubing (liquid tube) Type 45-56 $\phi 6.35$ (flared) Type 73-106 $\phi 9.52$ (flared)
- 2 Refrigerant tubing (gas tube) Type 45-56 $\phi 12.7$ (flared) Type 73-106 $\phi 15.88$ (flared)
- 3 Drain hose
- 4 Rear panel
- 5 Rear panel fixing holes ($\phi 5.3$ holes or as shown in figure "C")
- 6 Tubing and wiring holes ($\phi 80$)



unit: mm