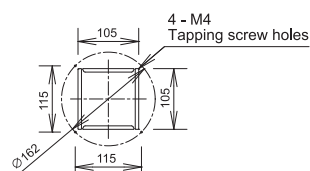
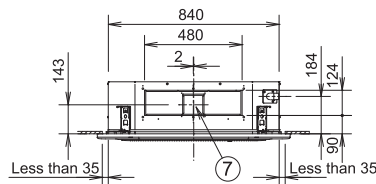
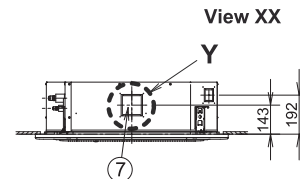
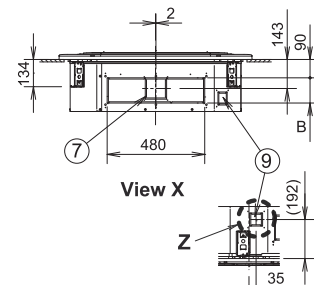
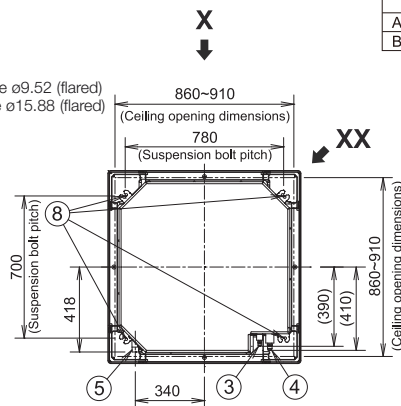


U2 TYPE 4-WAY CASSETTE Dimensions

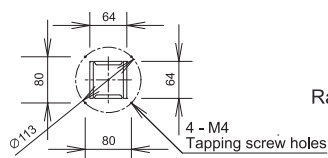
- 1 Air intake
- 2 Discharge outlet
- 3 Refrigerant tubing (liquid tube) 22-56 type ø6.35 (flared), 60-90 type ø9.52 (flared)
- 4 Refrigerant tubing (gas tube) 22-56 type ø12.7 (flared), 60-90 type ø15.88 (flared)
- 5 Drain tube connection port VP25 (outer dia. ø32)
- 6 Power supply port
- 7 Discharge duct connection port (ø150)
- 8 Suspension bolt hole (4-12×30 elongated hole)
- 9 Fresh air intake duct connection port (ø100) *
- 10 ECONAVI sensor (Only CZ-KPU3A)

	22~90 type	112~160 type
A	256	319
B	124	187

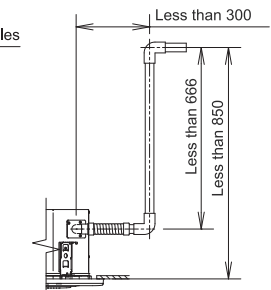
*1: Necessary to attach duct connecting flange (field supplied).
Filter size: 520 x 520 x 15



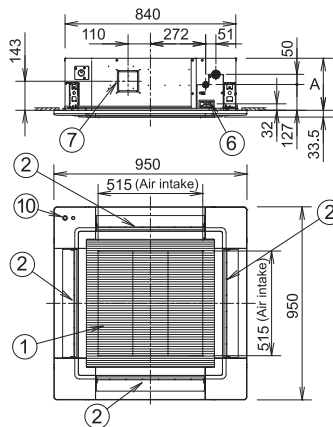
Detailed view Y



Detailed view Z



Raise dimension of drain tube



unit: mm

The length of the suspension bolts should be selected so that there is a gap of 30 mm or more below the lower surface of the ceiling (18 mm or more below the lower surface of the main unit), as shown in the figure at right. If the suspension bolt is too long, it will contact the ceiling panel and the unit cannot be installed.