



Panasonic®

Operating Instructions

Compact Stereo System

Model No. **SC-HC27**

Dear Customer

Thank you for purchasing this system.

For optimum performance and safety, read these instructions fully before you connect, operate or adjust this system.

Keep this manual for future reference.

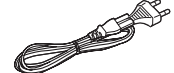
Your system and the illustrations can look differently.

Do the procedures with the remote control. You can also use the buttons on the main unit if they are the same.

Supplied accessories

Check and identify the supplied accessories.

1 x AC mains lead



1 x FM indoor antenna



1 x Remote control (N2QAYC000059)



1 x Lithium Button-Type battery

(Battery is already installed in the remote control.)



Made for
iPod iPhone

"Made for iPod" and "Made for iPhone" mean that an electronic accessory has been designed to connect specifically to iPod, or iPhone, respectively, and has been certified by the developer to meet Apple performance standards.

Apple is not responsible for the operation of this device or its compliance with safety and regulatory standards.

Please note that the use of this accessory with iPod, or iPhone may affect wireless performance.

iPhone, iPod, iPod classic, iPod nano, and iPod touch are trademarks of Apple Inc., registered in the U.S. and other countries.

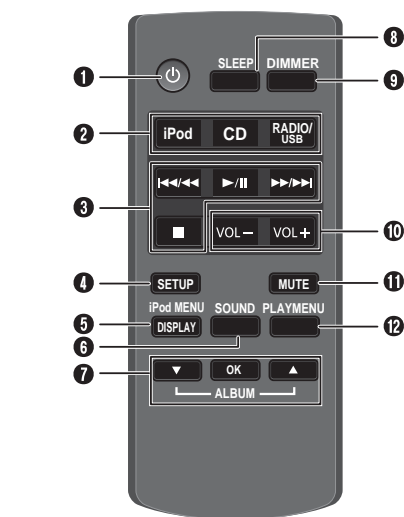
MPEG Layer-3 audio coding technology licensed from Fraunhofer IIS and Thomson.

Information on Disposal in other Countries outside the European Union



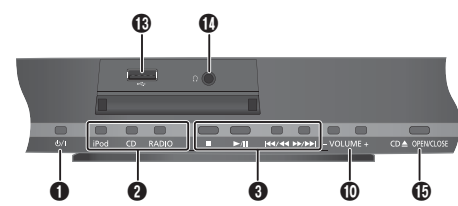
This symbol is only valid in the European Union. If you wish to discard this product, please contact your local authorities or dealer and ask for the correct method of disposal.

Overview of controls



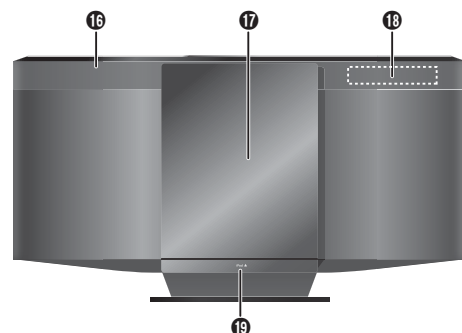
- Standby/on switch [⏻], [⏻/⏻]
 - Press to switch the unit from on to standby mode or vice versa. In standby mode, the unit is still consuming a small amount of power.
- Select audio source
- Basic playback control
- View the setup menu
- View the iPod/iPhone menu
View content information
- Select the sound effects
- Select an item
Skip album
- Set the sleep timer

Top view



- Decrease the brightness of the display panel
 - Press and hold the button to use this function.
 - To cancel, press and hold the button again.
- Adjust the volume of the system
- Mute the sound of the system
 - Press the button again to cancel.
 - "MUTE" is also cancelled when you adjust the volume or when you switch off the system.
- View the play menu
- USB port [⏻]
- Headphones jack [🎧]
 - Plug type: Ø 3.5 mm stereo (not supplied)
 - Avoid listening for prolonged periods of time to prevent hearing damage.
 - Excessive sound pressure from earphones and headphones can cause hearing loss.
 - Listening at full volume for long periods may damage the user's ears.
 - Be sure to use the supplied or recommended headphones or earphones.

Front view



- Open or close the sliding door
- Remote control sensor
 - Maximum range: 7m directly in front
- Sliding door
- Display panel
- Open or close the iPod/iPhone dock

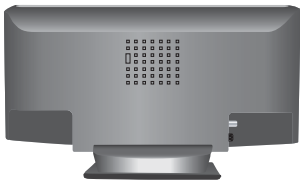
Panasonic Corporation
Web Site: <http://panasonic.net>

© Panasonic Corporation 2011

GN En

RQT9577-L
L1211HH0

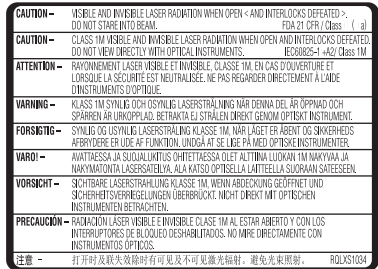
Safety precaution



Bottom of product



Inside of product



Product Identification Marking is located on the bottom of the unit.

WARNING

Unit

- To reduce the risk of fire, electric shock or product damage.
 - Do not expose this unit to rain, moisture, dripping or splashing.
 - Do not place objects filled with liquids, such as vases, on this unit.
 - Use only the recommended accessories.
 - Do not remove covers.
 - Do not repair this unit by yourself. Refer servicing to qualified service personnel.
 - Do not let metal objects fall inside the system.
 - Do not handle the plug with wet hands.

Batteries

- Risk of fire, explosion and burns. Do not recharge, disassemble, heat above 60°C or incinerate.
- Keep the Button-Type battery out of the reach of children. Never put Button-Type battery in mouth. If swallowed call your doctor.

CAUTION

Unit

- To reduce the risk of fire, electric shock or product damage,
 - Do not install or place this unit in a bookcase, built-in cabinet or in another confined space. Ensure this unit is well ventilated.
 - Do not obstruct this unit's ventilation openings with newspapers, tablecloths, curtains, and similar items.
 - Do not place sources of naked flames, such as lighted candles, on this unit.
 - Set the system up on an even surface away from direct sunlight, high temperatures, high humidity, and excessive vibration.
 - Do not use a DC power source.
 - Do not use an AC mains lead from other equipment.

- This unit is intended for use in moderate climates.
- Install this unit so that the AC mains lead can be unplugged from the socket outlet immediately if any problem occurs.
- This unit may receive radio interference caused by mobile telephones during use. If such interference occurs, please increase separation between this unit and the mobile telephone.
- This unit utilizes a laser. Use of controls or adjustments or performance of procedures other than those specified herein may result in hazardous radiation exposure.

Batteries

- Danger of explosion if battery is incorrectly replaced. Replace only with the type recommended by the manufacturer.
- When disposing the batteries, please contact your local authorities or dealer and ask for the correct method of disposal.
- Do not heat or expose to flame.
- Do not leave the battery(ies) in a car exposed to direct sunlight for a long period of time with doors and windows closed.

Specifications

Amplifier section

RMS output power stereo mode

Front Ch (both ch driven)
5 W per channel (6 Ω, 1 kHz, 10% THD)
Total RMS stereo mode power 10 W

Tuner, terminals section

Preset station

FM 30 stations

Frequency modulation (FM)

Frequency range
87.50 MHz to 108.00 MHz (50 kHz step)
Antenna terminals 75 Ω (unbalanced)

Frequency modulation (AM)

Frequency range
522 kHz to 1629 kHz (9 kHz step)
520 kHz to 1630 kHz (10 kHz step)

Headphones jack

Terminal Stereo, 3.5 mm jack

Disc section

Disc played (8 cm or 12 cm)

CD, CD-R/RW (CD-DA, MP3* formatted disc)
* MPEG-1 Layer 3, MPEG-2 Layer 3

Pick up

Wavelength 790 nm (CD)
Laser power CLASS I (CD)

Audio output (Disc)

Number of channels 2 ch (FL, FR)
FL = Front left channel
FR = Front right channel

USB section

USB port

USB standard USB 2.0 full speed
Media file format support MP3 (*.mp3)
USB device file system FAT 12, FAT 16, FAT 32
USB port power 500 mA (max)

Speaker section

Type

1 way, 1 speaker system (bass reflex)

Speaker unit(s)

Full range 8 cm cone type

Impedance

6 Ω

General

Power supply

AC 220 to 240 V, 50 Hz

Power consumption

19 W

Power consumption in standby mode

0.2 W (approximate)

Dimensions (W x H x D)

400 mm x 213 mm x 110 mm
[D = 72 mm (min)]
[D = 144 mm (tray open)]

Mass

2 kg

Operating temperature range

0°C to +40°C

Operating humidity range

35% to 80% RH (no condensation)

Note:

- Specifications are subject to change without notice.
- Mass and dimensions are approximate.
- Total harmonic distortion is measured by the digital spectrum analyzer.

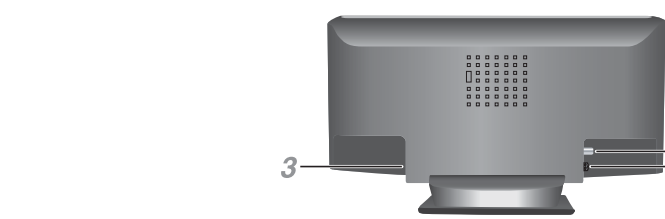
Maintenance

To clean this system, wipe with a soft, dry cloth.

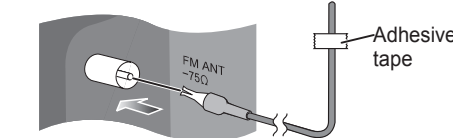
- Never use alcohol, paint thinner or benzine to clean this system.

- Before using chemically treated cloth, read the instructions that came with the cloth carefully.

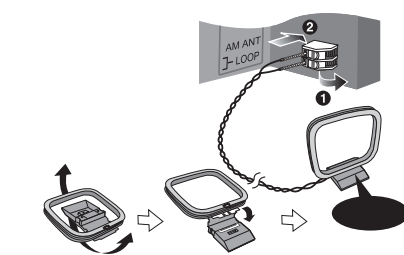
Getting started



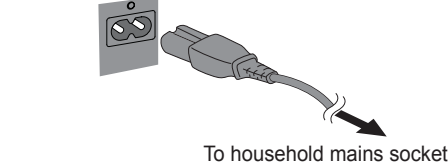
- Connect the FM indoor antenna.
Place the antenna where reception is best.



- Connect the AM loop antenna



- Connect the AC mains lead.
Power consumption in standby mode: approximately 0.2 W.

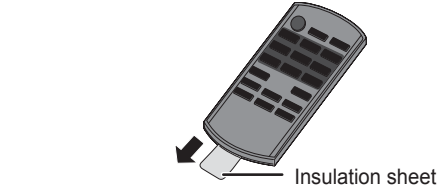


To household mains socket

- Note:**
- Some settings return to default when you disconnect the system.
 - These speakers do not have magnetic shielding. Do not put them near TVs, PCs or other equipment easily influenced by magnetism.
 - You cannot remove the net of the speakers.

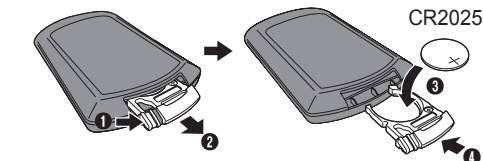
Preparing the remote control

Before using



Replacing the battery
Replace with a new battery only (CR2025).

- While pressing the stopper, pull out the battery holder.
- Insert a new battery with the (+) side facing up.
- Push the battery holder back fully.

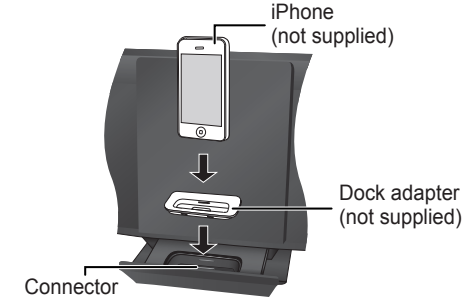


iPod/iPhone / CD / USB

Inserting or removing media

iPod/iPhone

Push [▲, iPod] to open the dock tray.



Note:

- Make sure to align your iPod/iPhone with the connector when inserting.

CD

Press [CD ▲, OPEN/CLOSE] on the main unit to open the sliding door.

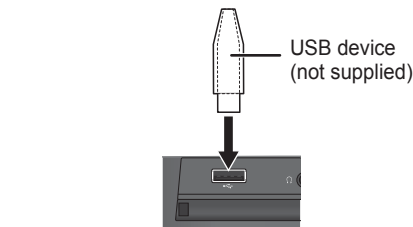
Put in a disc with the label facing towards you.



Note:

- Keep fingers away from the sliding door when it is closing.

USB



Note:

- Do not use a USB extension cable. The system cannot recognise USB device connected through a cable.

Basic playback

Press [iPod], [CD] or [RADIO/USB] to select the source.

Start	Press [▶/II].
Stop	Press [■]. [USB] : Press two times.
Pause	Press [▶/II] or [■]. [USB] : The track is memorised. "RESUME" is shown.
Skip track	Press [◀◀/◀◀] or [▶▶/▶▶].
Search through track	Press and hold [◀◀/◀◀] or [▶▶/▶▶].

iPod/iPhone iPod	
View iPod/iPhone menu	Press [iPod MENU]. Press again to return to previous menu.
Select an item	Press [▲, ▼] and then press [OK].

Note:

- Depending on the model, it may be necessary to remove the iPod/iPhone and select the album, artist, etc. on the iPod/iPhone.
- Operation results may vary depending on the iPod/iPhone models.
- Read the User Guide of the iPod/iPhone for the operating instructions.

CD CD	
Skip album MP3	Press [▲, ▼].
View information	Press [DISPLAY]. Available information is shown on the display panel.

Note:

- This system supports ver. 1.0, 1.1 and 2.3 ID3 tags.

Play menu CD

- Press [PLAY MENU] to select "PLAYMODE" or "REPEAT".
- Press [▲, ▼] and then press [OK] to select the desired mode.

PLAYMODE	
OFF PLAYMODE	Play all tracks.
1-TRACK 1▶	Play one selected track on the disc. Press [◀◀/◀◀] or [▶▶/▶▶] to select the track.
1-ALBUM 1■ MP3	Play one selected album on the disc. Press [▲, ▼] to select the album.
RANDOM ⋈	Play a disc randomly.
1- ALBUM RANDOM 1■ >⋈ MP3	Play all tracks in one selected album randomly. Press [▲, ▼] to select the album.
REPEAT	
ON REPEAT ⌂	Repeat playback.
OFF REPEAT	Cancel repeat playback.

Note:

- During random playback, you cannot repeat or skip to tracks which have been played.
- The setting returns to default "OFF PLAYMODE" when you open the sliding door.

Compatible media

iPod/iPhone (as of December 2011)

Update your iPod/iPhone with the latest software before using this system.

iPod touch 1st, 2nd, 3rd, 4th generation
iPod nano 1st, 2nd, 3rd, 4th, 5th, 6th generation
iPod classic
iPod 5th generation
iPhone 4, iPhone 3GS, iPhone 3G, iPhone

Charging an iPod/iPhone

An iPod/iPhone is charged automatically when connected to the system (even when the system is in standby mode).

- Disconnect the iPod/iPhone if it is not used for an extended period of time after charging is complete
- Charging stops when the battery is fully charged.
- The battery will deplete naturally.

CD

- This system can play CD-R/RW with CD-DA or MP3 format content.
- MP3 files are defined as tracks and folders are defined as albums.
- This system can access up to:
 - CD-DA : 99 tracks
 - MP3 : 999 tracks, 255 albums (including root folder) and 20 sessions.
- Disc must conform to ISO9660 level 1 or 2 (except for extended formats).
- Recordings will not necessarily be played in the order you recorded them.

Note on using a DualDisc

A DualDisc does not play back if the side of the digital audio content does not meet the technical specifications of the Compact Disc Digital Audio (CD-DA) format.

USB

- USB mass storage devices that support bulk-only transfer.
- USB mass storage devices that support USB 2.0 full speed.
- Files are defined as tracks and folders are defined as albums.
- Track must have the extension ".mp3" or ".MP3".
- This system can access up to:
 - 255 albums (including root folder)
 - 2500 tracks
 - 999 tracks in one album
- CBI (Control/Bulk/Interrupt) is not supported.
- NTFS file system is not supported (only FAT 12/16/32 file system is supported).
- Some files can fail to work because of the sector size.

Sound effects

- Press [SOUND] to select a sound effect.
- Within 3 seconds, press [▲, ▼] to select the desired setting.

PRESET EQ	"HEAVY" : Adds punch to rock "SOFT" : For background music "CLEAR" : Clarifies higher frequencies "VOCAL" : Adds gloss to vocal "FLAT" : Cancels the sound effect
BASS	"BASS -4" to "BASS +4"
TREBLE	"TREBLE -4" to "TREBLE +4"
D.BASS	"ON D.BASS" or "OFF D.BASS"
SURROUND	"ON SURROUND" or "OFF SURROUND"

Radio

Press [RADIO/USB] to select "FM".

Manual tuning

Press [◀◀/◀◀] or [▶▶/▶▶] to select the frequency of the required station.

To tune automatically, press and hold the button until the frequency starts changing quickly.

Memory presetting

30 FM stations can be preset.

Automatic presetting

- Press [PLAY MENU] to select "A.PRESET".
- Press [▲, ▼] to select "LOWEST" or "CURRENT" frequency.
- Press [OK] to start presetting.

Manual presetting

- Press [PLAY MENU] to select "TUNE MODE".
- Press [▲, ▼] to select "MANUAL" and then press [OK].
- Press [◀◀/◀◀] or [▶▶/▶▶] to tune in to the station.
- Press [OK].
- Press [▲, ▼] to select a preset number.
- Press [OK].
Do steps 3 through 6 again to preset more stations.
The new station replaces any station that occupies the same preset number.

Selecting a preset station

- Press [PLAY MENU] to select "TUNE MODE".
- Press [▲, ▼] to select "PRESET" and then press [OK].
- Press [◀◀/◀◀] or [▶▶/▶▶] to select the preset station.

To improve the sound quality

When "FM" is selected

- Press [PLAY MENU] to select "FM MODE".
- Press [▲, ▼] to select "MONO" and then press [OK].
To cancel, select "STEREO".
"MONO" is also cancelled when you change the frequency.

When "AM" is selected

- Press [RADIO MENU] to select "B.PROOF".
- Press [▲, ▼] to select "BP 1" or "BP 2" and then press [OK].

AM allocation setting (by main unit only)

This system can also receive AM broadcasts allocated in 10 kHz steps.

- Press [RADIO/USB] to select "AM".

- Press and hold [RADIO/USB].

After a few seconds, the display panel shows the current minimum radio frequency. Release the button when the minimum frequency changes.

- To go back to the initial setting, do the above steps again.
- After you change the setting, preset frequencies are erased.

Clock and timers

Setting the clock

This is a 24-hour clock.

- Press [SETUP] to select "CLOCK".
- Within 10 seconds, press [▲, ▼] to set the time.
- Press [OK].

Note:

Reset the clock regularly to maintain accuracy.

Play timer

You can set the timer to come on at a certain time to wake you up.

Preparation

Set the clock.
Prepare the audio source you want to listen to and set the volume.

- Press [SETUP] to select "TIMER ADJ".
- Within 10 seconds, press [▲, ▼] to set the start time.
- Press [OK].
- Do steps 2 and 3 again to set the end time.
- To start the timer
- Press [SETUP] to select "TIMER SET"
- Press [▲, ▼] to select "SET" and then press [OK].
- Press [⏻] to switch off the system.
The system must be switched off for the timer to operate.

Change the settings	Do steps 1 through 4 and 7 again (⇒ above).
Check the settings	1) Press [SETUP] to select "TIMER ADJ". 2) Press [OK] to view the settings.
Cancel	1) Press [SETUP] to select "TIMER SET". 2) Press [▲, ▼] to select "OFF" and then press [OK].

Note:

- The timer starts at a low volume and increases gradually to the preset level.
- The timer comes on at the set time every day if the timer is on.
- If you switch off the system and switch on again while a timer is in operation, the timer will not stop at the end time.

Sleep timer

The sleep timer switches off the system after the set time.

Press [SLEEP] to select the setting (in minutes).
To cancel, select "OFF".

30 MIN → 60 MIN → 90 MIN → 120 MIN → OFF
↑

To show the remaining time

Press [SLEEP].

Note:

- The sleep timer can be used together with the play timer.
- The sleep timer always comes first. Be sure not to set an overlap of timers.

Auto off function

This function switches off the system (except in radio or DAB source) if you do not use the system for approximately 30 minutes.

- Press [SETUP] to select "AUTO OFF".
- Press [▲, ▼] to select "ON" or "OFF" and then press [OK].

Troubleshooting guide

Before requesting service, make the following checks. If you are in doubt about some of the check points, or if the solutions indicated do not solve the problem, consult your dealer for instructions.

Common problems

No operations can be done with the remote control.

- Examine that the battery is installed correctly.

Sound is distorted or no sound.

- Adjust the volume of the system.
- Switch off the system, determine and correct the cause, then switch the system on again. It can be caused by straining of the speakers through excessive volume or power, and when using the system in a hot environment.

A "humming" sound can be heard during playback.

- An AC mains lead or fluorescent light is near the cables. Keep other appliances and cords away from the cables of this system.

iPod/iPhone

You cannot switch on the iPod/iPhone.

- Examine that the battery of the iPod/iPhone is not depleted.
- Switch off the iPod/iPhone and the system before you connect the iPod/iPhone. Connect the iPod/iPhone and try again.

No sound.

- Switch off the iPod/iPhone and remove from the system. Connect the iPod/iPhone to the system and switch it on and play it again.

CD

Display not shown correctly. Playback does not start.

- You have not put in the disc correctly. Put it in correctly.
- Disc is dirty. Clean the disc.
- Replace the disc if it is scratched, warped, or non-standard.
- There is condensation. Let the system dry for 1 to 2 hours.

USB

The USB device or the contents in it cannot be read.

- The format of the USB device or the contents in it is/are not compatible with the system.
- USB devices with storage capacity of more than 32 GB cannot work in some conditions.

Slow operation of the USB device.

- Large content size or large memory USB device takes longer time to read.

The elapsed time shown is different from the actual play time.

- Transfer the data to another USB device or backup the data and reformat the USB device.

Radio

A beat sound is heard.

- Switch off the TV or move it away from the system.
- Set to "BP 1" or "BP 2" when in AM tuner mode.
-

A low hum is heard during AM broadcasts.

- Move the antenna away from other cables and cords.

Main unit displays

"--:--"

- You connected the AC mains lead for the first time or there was a power failure recently. Set the clock.

"ADJUST CLOCK"

- Clock is not set. Adjust the clock accordingly.

"ADJUST TIMER"

- Play timer is not set. Adjust the play timer accordingly.

"DIMMER"

- 10 seconds after the volume is set to "0", the brightness of the display panel is decreased.

"ERROR"

- An incorrect operation was done. Read the instructions and try again.

"F61" or "F76"

- There is a power supply problem.

"NODEVICE"

- The iPod/iPhone is not connected. Examine the connection.

"NO DISC"

- You have not put in a disc or put in a disc that the system cannot play.

"NO PLAY"

- Examine the content. You can only play supported format.
- If there are more than 255 albums or folders (audio and non-audio), some of the MP3 files in these albums cannot be read and played. Transfer these music albums to another USB device. Alternatively, reformat the USB device and save these music albums prior to saving the other non-audio folders.

"NOT MP3/ERROR"

- An unsupported MP3 format. The system will skip that track and play the next one.

"NOT SUPPORT"

- You have inserted an iPod/iPhone that cannot be played.
- Switch off the iPod/iPhone and the system before you connect the iPod/iPhone. Connect the iPod/iPhone and try again.

"VBR--"

- The system cannot show the remaining play time for variable bit rate (VBR) tracks.

Memory reset (Initialisation)

Reset the memory when the following situations occur:

- There is no response when buttons are pressed.
- You want to clear and reset the memory contents.

- Disconnect the AC mains lead. (Wait 3 minutes before you continue with step 2.)
- While you press and hold [⏻] on the main unit, connect the AC mains lead again. "-----" shows on the display panel.
- Release [⏻].
All the settings are set back to the factory preset. It is necessary to set the memory items again.

Remote control code

When other Panasonic equipment responds to the remote control of this system, change the remote control code for this system.

To set the code to "REMOTE 2"

- Press and hold [CD] on the main unit and [▲] on the remote control until "REMOTE 2" is shown.
- Press and hold [OK] and [▲] for a minimum of 4 seconds.

To set the code to "REMOTE 1"

- Press and hold [CD] on the main unit and [▼] on the remote control until "REMOTE 1" is shown.
- Press and hold [OK] and [▼] for a minimum of 4 seconds.