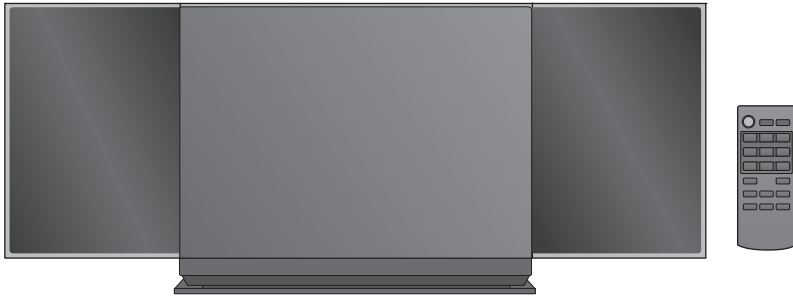


# Panasonic®

## Operating Instructions Compact Stereo System

Model No. SC-HC37DB  
SC-HC37



Thank you for purchasing this product.

For optimum performance and safety, please read these instructions carefully.

Please keep this manual for future reference.

### **Included Installation Instructions (⇒ 2, 6)**

**The installation should never be done by any other than a qualified installation specialist.**

Before commencing work, carefully read these installation instructions and the operating instructions to ensure that installation is performed correctly.

(Please keep these instructions. You may need them when maintaining or moving this unit.)

# Safety precautions

## WARNING

### Unit

- To reduce the risk of fire, electric shock or product damage,
  - Do not expose this unit to rain, moisture, dripping or splashing.
  - Do not place objects filled with liquids, such as vases, on this unit.
  - Use only the recommended accessories.
  - Do not remove covers.
  - Do not repair this unit by yourself. Refer servicing to qualified service personnel.
  - Do not let metal objects fall inside this unit.
  - Do not place heavy items on this unit.

### AC mains lead

- To reduce the risk of fire, electric shock or product damage,
  - Ensure that the power supply voltage corresponds to the voltage printed on this unit.
  - Insert the mains plug fully into the socket outlet.
  - Do not pull, bend, or place heavy items on the lead.
  - Do not handle the plug with wet hands.
  - Hold onto the mains plug body when disconnecting the plug.
  - Do not use a damaged mains plug or socket outlet.
- Install this unit so that the AC mains lead can be unplugged from the socket outlet immediately if any problem occurs.

### Button-type battery (Lithium battery)

- Risk of fire, explosion and burns. Do not recharge, disassemble, heat above **60 °C** or incinerate.
- Keep the Button-Type battery out of the reach of children. Never put Button-Type battery in mouth. If swallowed call your doctor.

## CAUTION

### Unit

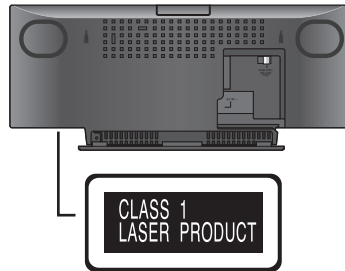
- This unit utilizes a laser. Use of controls or adjustments or performance of procedures other than those specified herein may result in hazardous radiation exposure.
- Do not place sources of naked flames, such as lighted candles, on this unit.
- This unit may receive radio interference caused by mobile telephones during use. If such interference occurs, please increase separation between this unit and the mobile telephone.
- This unit is intended for use in moderate climates.

### Placement

- Place this unit on an even surface.
- To reduce the risk of fire, electric shock or product damage,
  - Do not install or place this unit in a bookcase, built-in cabinet or in another confined space. Ensure this unit is well ventilated.
  - Do not obstruct this unit's ventilation openings with newspapers, tablecloths, curtains, and similar items.
  - Do not expose this unit to direct sunlight, high temperatures, high humidity, and excessive vibration.

### Button-type battery (Lithium battery)

- Danger of explosion if battery is incorrectly replaced. Replace only with the type recommended by the manufacturer.
- When disposing of the batteries, please contact your local authorities or dealer and ask for the correct method of disposal.
- Insert with poles aligned.
- Mishandling of batteries can cause electrolyte leakage and may cause a fire.
  - Remove the battery if you do not intend to use the remote control for a long period of time. Store in a cool, dark place.
  - Do not heat or expose to flame.
  - Do not leave the battery(ies) in a car exposed to direct sunlight for a long period of time with doors and windows closed.



<b>CAUTION</b> -	VISIBLE AND INVISIBLE LASER RADIATION WHEN OPEN <AND INTERLOCKS DEFEATED>. DO NOT STARE INTO BEAM. FEM 21 CFR 1388.1 (1-3)
<b>CAUTION</b> -	CLASS 1M INVISIBLE AND INVISIBLE LASER RADIATION WHEN OPEN AND INTERLOCKS DEFEATED. DO NOT VIEW DIRECTLY WITH OPTICAL INSTRUMENTS. IEC60825-1:482/CLASS 1M
<b>ATTENTION</b> -	RAYONNEMENT LASER VISIBLE ET INVISIBLE. CLASSE 1M. EN CAS D'OUVERTURE ET LORSQUE LA SECURITE EST NEUTRALISEE, NE PAS REGARDER DIRECTEMENT A L'ADE DES INSTRUMENTS D'OPTIQUE.
<b>WARNING</b> -	KLASSE 1M SYNLIG OCH OSYNLIG LASERSTRÅLNING NÅR DENNA DEL ÄR ÖPPNAD OCH SPÄRRAR ÄR URÖPPNAD. BETRÄKTA ELLER STRÅLNINGEN GENOM OPTISKA INSTRUMENT.
<b>FORSIGTIG</b> -	SYNLIG OG OSYNLIG LASERSTRÅLING KLASSE 1M. NÅR LÅSET ER ÅBENT OG SIKKERHEDS AFTRYKERE ER UDE AF FUNKTION, UNDGÅ AT SE UDEN PÅ MED OPTISKE INSTRUMENTER.
<b>VARO!</b> -	AVATTARESSA JA SUOJALUKITUS OHITETTÄESSÄ OLEI ALTINNA LUOKAN 1M NÄKYVÄÄ JA NÄKYMÄTÖNTÄ LASERSÄTELYÄ, ALA KATSO OPTISELLÄ LAITTEELLA SUORAAN SATEESEEN.
<b>VORSICHT</b> -	SICHTBARE LASERSTRÄHLUNG KLASSE 1M, WEENN ABSCHELLUNG GEÖFFNET UND SICHERHEITSDRÜCKEN UNTERS ÜBERDRÜCKT, NICHT DIREKT MIT OPTISCHEN INSTRUMENTEN BETRACHTEN.
<b>PRECAUTION</b> -	RADIACION LASER VISIBLE E INVISIBLE CLASE 1M AL ESTAR ABIERTO Y CON LOS INTERRUPTORES DE BLOQUEO DESHABILITADOS, NO MIRE DIRECTAMENTE CON INSTRUMENTOS OPTICOS.
<b>注意</b> -	打开时及解除光锁时有可能及不可见激光照射。避免直视照射。 JOL251032A

(Inside of product)

Product Identification Marking is located on the bottom of the unit.

### If you see this symbol-

### Information on Disposal in other Countries outside the European Union



This symbol is only valid in the European Union. If you wish to discard this product, please contact your local authorities or dealer and ask for the correct method of disposal.

---

## Accessories

Check the supplied accessories before using this unit.

- 1 Remote control (with a battery)  
(N2QAYC000057)
- 1 AC mains lead

- SC-HC37DB**  
1 DAB antenna



- SC-HC37**  
1 AM loop antenna



- SC-HC37**  
1 FM indoor antenna

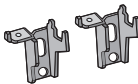


### Wall mounting accessories

- 1 Safety holder
- 2 Wall mount brackets



- 1 Screw



- Do not use AC mains lead with other equipment.
- Product numbers provided in this operating instructions are correct as of January 2012. These may be subject to change.

---

## Table of contents

Safety precautions .....	2
Accessories .....	3
Playable media .....	4
Control reference guide.....	5
Attaching the unit to a wall (optional) .....	6
Connections .....	8
Inserting or removing media .....	9
Media playback operations .....	10
<b>SC-HC37DB</b> Listening to DAB+ .....	11
Listening to FM/AM radio .....	13
Internet Radio .....	13
Sound adjustment.....	14
Clock and Timer .....	14
Others.....	15
Troubleshooting .....	15
Specifications .....	18
Unit and media care .....	19
Licenses.....	19

Operations in these instructions are described using the remote control, but you can do the operations with the main unit if the operations are the same.

## Playable media

- Please be aware that Panasonic accepts no responsibility for the loss of data and/or information.

### Compatible iPod/iPhone for docking

#### iPod touch

1st, 2nd, 3rd, and 4th generation

#### iPod nano

2nd, 3rd, 4th, 5th, and 6th generation

#### iPod classic

#### iPhone 4S / iPhone 4 / iPhone 3GS / iPhone 3G / iPhone

(as of January 2012)



- Compatibility depends on the software version. Update your iPod/iPhone to the latest software before using it with this unit.
- Depending on the model, it may be necessary to remove the iPod/iPhone and select the album, artist, etc. on the iPod/iPhone.
- Be sure to use a dock adapter that is compatible with your iPod/iPhone. To purchase a dock adapter, consult your iPod/iPhone dealer. If a dock adapter is not available, insert and remove the iPod/iPhone with care.

### Charging the iPod/iPhone

**The iPod/iPhone will start being charged once connected to this unit.**

- In standby mode, "IPOD CHARGING" is shown on the main unit's display.
- Check the iPod/iPhone to see if the battery is fully charged. (Once fully recharged, additional recharging will not occur.)

### Compatible CD

- A disc with the CD Logo.



- This unit can play back discs that conform to the CD-DA format.
- The unit may not be able to play some discs due to the condition of the recording.

### Compatible USB devices

- This unit does not guarantee connection with all USB devices.
- FAT12, FAT16 and FAT32 file systems are supported.
- This unit supports USB 2.0 full speed.
- This unit can support USB devices of up to 32 GB.

### Compatible MP3 files

- Supported format: Files with the extension ".mp3" or ".MP3".
- Compatible compression rate: Between 64 kbps and 320 kbps (stereo).
- Depending on how you create the MP3 files, they may not play in the order you numbered them or may not play at all.

### Creating MP3 files on a CD-R/RW

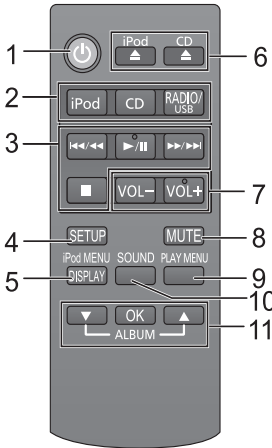
- Maximum number of tracks and albums: 999 tracks and 254 albums (Excluding Root folder).
- Disc formats: ISO9660 level 1 and level 2 (except for extended formats).
- If the disc includes both MP3 and normal audio data (CD-DA), the unit plays the type recorded in the inner part of the disc.
- This unit cannot play files recorded using packet write.

### Creating MP3 files on a USB device

- Maximum number of tracks and albums: 2500 tracks and 254 albums (Excluding Root folder).
- Only one memory card will be selected when connecting a multiport USB card reader, typically the first memory card inserted.

# Control reference guide

## Remote control

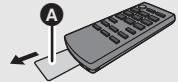


Keep the button-type battery out of reach of children to prevent swallowing.

- |   |   |
|---|---|
| 1 Turn this unit on or off                                  | 8 Mute the sound  |
| 2 Select the audio source                                   | Mutes the sound. Press again to cancel. "MUTE" is also cancelled when the volume is adjusted or the unit is turned off. |
| 3 Basic playback control buttons                            | 9 Enter playback menu   |
| 4 Enter setup menu  | 10 Enter sound menu   |
| 5 Enter the iPod/iPhone menu / Change displayed information | 11 Selection/OK   |
| 6 Open/close the sliding door                               |   |
| 7 Adjust the volume   |   |

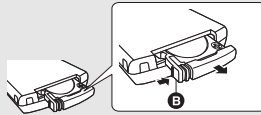
### ■ Preparation

Remove the insulation sheet **A** before using.



### ■ To replace a button-type battery

- |  |  |
|--|--|
| 1 While pressing the stopper <b>B</b> , pull out the battery holder. | 2 Set the button-type battery with its (+) mark facing upward and then put the battery holder back in place. |
|--|--|

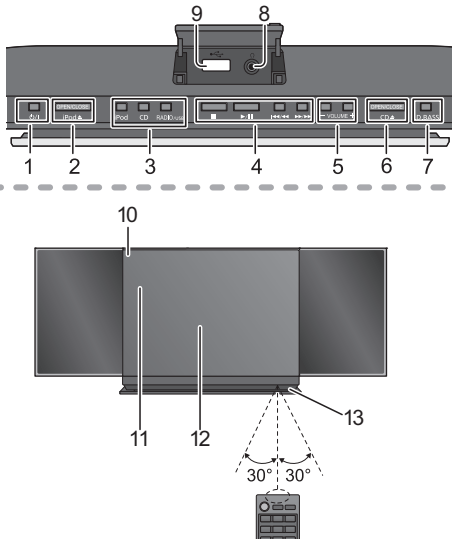


Battery type: CR2025 (Lithium battery)

- The battery should normally last about 1 year, however this depends on how frequently the unit is used.

## Main unit

### Top view



### 1 Standby/on switch (⏻/⏻)

Press to switch the unit from on to standby mode or vice versa.

In standby mode, the unit is still consuming a small amount of power.

- |   |
|---|
| 2 Open/close the sliding door (for iPod/iPhone) |
| 3 Select the audio source                       |
| 4 Basic playback control buttons                |
| 5 Adjust the volume (0 (min) to 50 (max))       |
| 6 Open/close the sliding door (for discs)       |
| 7 Dynamic Bass sound effect selector            |
| 8 Headphone jack                                |

Plug type:  $\varnothing$ 3.5 mm stereo

Recommended plug type: Straight Plug

- Listening at full volume for long periods may damage the user's ears.
- Excessive sound pressure from earphones and headphones can cause hearing loss.

- |                                 |
|---------------------------------|
| 9 USB port                      |
| 10 Standby indicator            |
| 11 Display                      |
| 12 Sliding door                 |
| 13 Remote control signal sensor |

Distance:

Within approx. 7 m directly in front.

- To avoid interference, please do not put any objects in front of signal sensor.

# Attaching the unit to a wall (optional)

## Installation accessories

### Supplied accessories

- 1 Safety holder
- 1 Screw
- 2 Wall mount brackets

### Commercially available accessories (not supplied)

- 4 Wall mount bracket fixing screws
- 1 Safety holder fixing screw
- 1 Fall prevention cord
- 1 Screw eye

- Keep the safety holder out of reach of children to prevent swallowing.
- Keep the screws out of reach of children to prevent swallowing.
- Keep the wall mount brackets out of reach of children to prevent swallowing.



Use screws with a nominal diameter of  $\varnothing 4$  mm, which are suitable to the material of the wall (e.g., wood, steel, concrete, etc.)

## Safety precautions

**Professional installation is required. The installation should never be done by any other than a qualified installation specialist. PANASONIC DISCLAIMS ANY PROPERTY DAMAGE AND/OR SERIOUS INJURY, INCLUDING DEATH RESULTING FROM IMPROPER INSTALLATION OR INCORRECT HANDLING.**

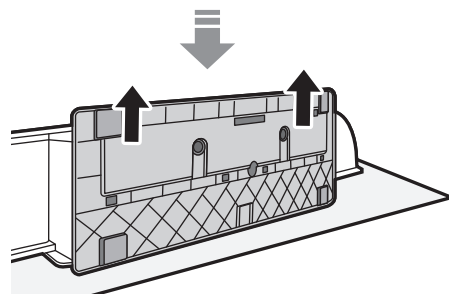
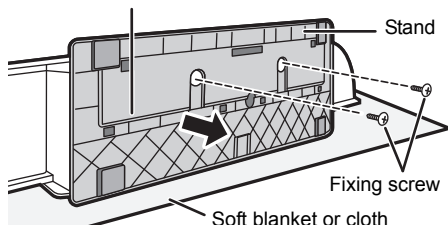
- Be sure to install this unit as indicated within this operating instructions.

## Wall mount instructions

**Before installation, turn the unit off and disconnect the AC mains lead from the mains socket.**

- 1 Detach the stand from the unit.
  - ↳ Unscrew the fixing screw (2 pieces) at the bottom of the unit.
  - ↳ Gently pull the stand off the unit as illustrated.
  - Keep the removed screws and stand in a safe place.

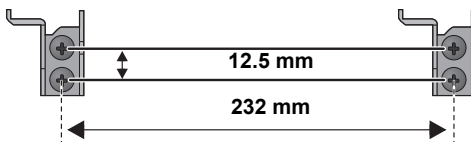
Bottom of main unit



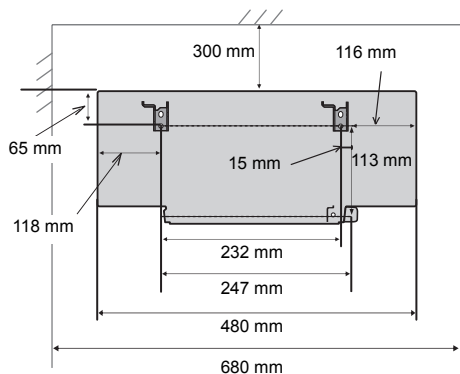
- 2 Measure and mark the position of the wall mount brackets (Both sides).

↳ Use figures below to identify the screwing positions.

### The position to attach the wall mount brackets

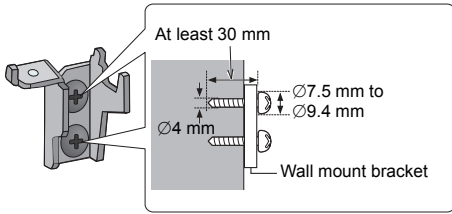


### Space required



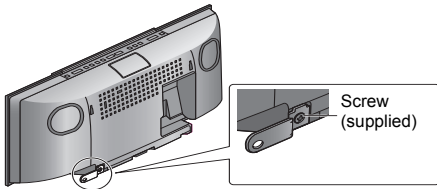
**3** Attach the wall mount bracket to the wall with 2 screws (not supplied). (Both sides)

- Use a spirit level to ensure both wall mount brackets are level.
- Make sure that the screw used and the wall are strong enough to support the weight of at least 33 kg.



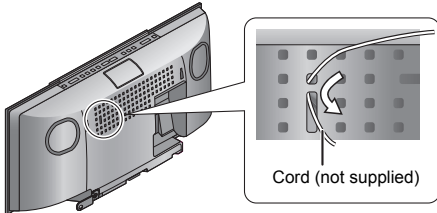
**4** Fix the safety holder onto the unit with the screw (supplied).

↳ Screw tightening torque: 50 N•cm to 70 N•cm.



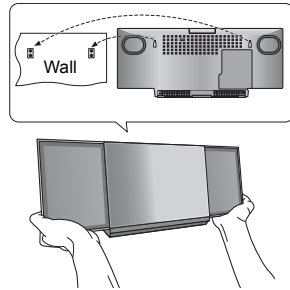
**5** Attach the fall prevention cord (not supplied) to this unit.

- Use a cord that is capable of supporting over 33 kg (with a diameter of about 1.5 mm).



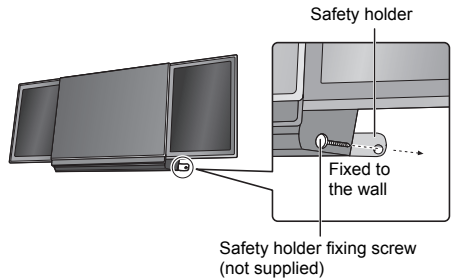
**6** Hook the unit securely onto the wall mount brackets with both hands.

- Connect the antenna(s) and the AC mains lead to the unit before hanging the unit onto the wall. (⇒ 8)
- After hanging the unit, release your hand carefully to confirm the unit sits securely on the wall.



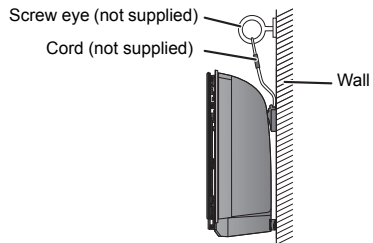
**7** Drive the safety holder fixing screw (not supplied) to secure the safety holder onto the wall.

- Make sure that the screw used and the wall are strong enough to support the weight of at least 33 kg.
- Refer to step 3 for requirements before screwing.



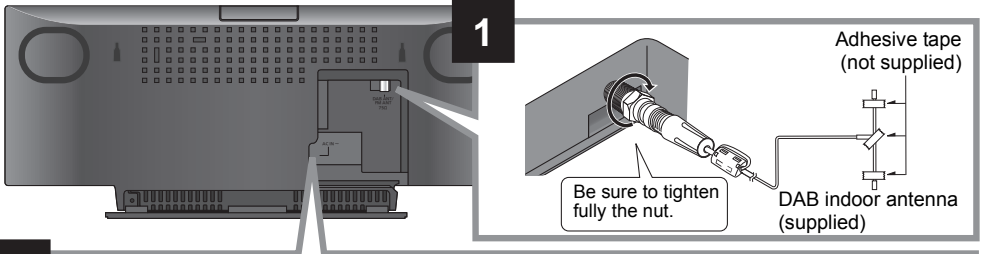
**8** Attach the fall prevention cord (not supplied) to the wall.

- Make sure that the screw used and the wall are strong enough to support the weight of at least 33 kg.
- Make sure that the slack of the cord is minimal.

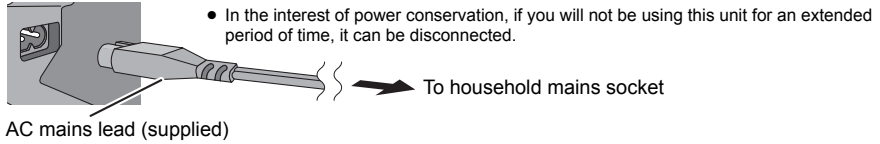


# Connections

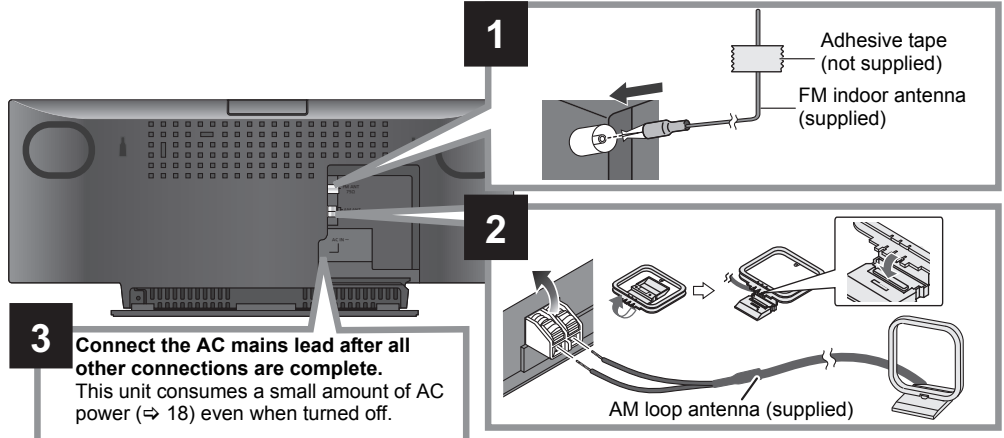
## SC-HC37DB



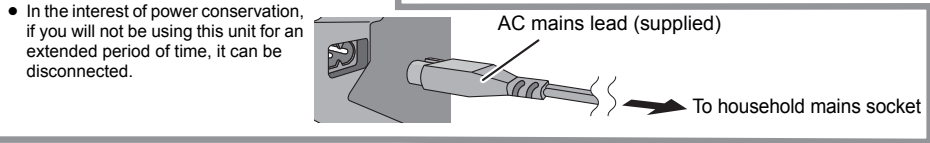
**2** Connect the AC mains lead after all other connections are complete. This unit consumes a small amount of AC power (⇒ 18) even when turned off.



## SC-HC37



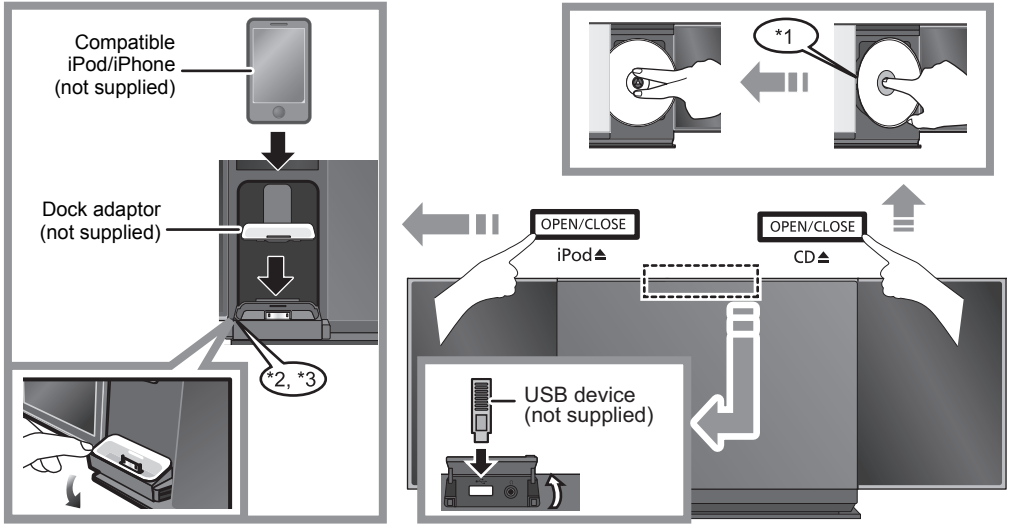
**3** Connect the AC mains lead after all other connections are complete. This unit consumes a small amount of AC power (⇒ 18) even when turned off.



- These speakers do not have magnetic shielding. Do not place them near a television, personal computer or other devices easily influenced by magnetism.
- Tape the DAB (SC-HC37DB) / FM (SC-HC37) antenna to a wall or column in a position with the least amount of interference. (Use an appropriate outdoor antenna if radio reception is poor.)



## Inserting or removing media



\*1: Make sure to tilt the disc so as not to touch the sliding door.

\*2: Do not push or pull the dock manually.

\*3: When inserting or removing the iPod/iPhone, tilt the dock slightly by holding the corner of the dock.

- Make sure that the unit does not fall when inserting or removing media.
- Be sure to remove the iPod/iPhone from its case.
- When moving this unit, be sure to remove all media and turn this unit to standby mode.
- Insert the USB device directly into the USB port. Do not use any USB extension cable.
- Before removing the USB device, select a source other than "USB".

## Media playback operations

The following marks indicate the availability of the feature.

**CD**: CD audio in CD-DA format and a CD that contains MP3 files (⇒ 4)

**iPod**: Compatible iPod/iPhone (⇒ 4)

**USB**: USB devices containing MP3 files (⇒ 4)

### Preparation

- Turn the unit on.
- Insert the media. (⇒ 9)
- Press [CD], [iPod] or [USB] to select the audio source.

### Basic play (CD, iPod, USB)

<b>Play</b>	Press [▶/  ].
<b>Stop</b>	Press [■]. • <b>USB</b> : The track is memorised and "RESUME" is displayed.
<b>Pause</b>	Press [▶/  ]. Press again to restart play.
<b>Skip</b>	Press [◀◀/▶▶] or [▶▶/▶▶] to skip track. <b>CD, USB</b> Press [▲] or [▼] to skip the MP3 album.
<b>Search</b>	During playback Press and hold [◀◀/▶▶] or [▶▶/▶▶]. • <b>iPod</b> : Backwards search is only within the current track.
<b>Volume</b>	Press [VOL -] or [VOL +] to adjust the volume.
<b>Mute</b>	Press [MUTE] to mute the sound.

### CD, USB View contents information

Press [DISPLAY] repeatedly during play or pause.



- Maximum number of displayable characters: Approx. 30
- This unit supports ver. 1.0, 1.1 and 2.3 ID3 tags. Text data that is not supported will not be displayed or shown differently.
- Album and track indication for MP3 files.



"A \_ \_ \_": MP3 album number.

"T \_ \_ \_": MP3 track number.

• " \_ \_ \_" stands for the album or track number.

"■": This indication is also used to refer to an album.

"♪": This indication is also used to refer to a track.

### iPod To navigate through the iPod/iPhone menu

- Open the Music App to use this feature with iPod touch/iPhone models.
- [▲, ▼]: To navigate menu items.
- [OK]: To go to the next menu.
- [iPod MENU]: To return to the previous menu.



- To view the operation, open the sliding door.
- The operation may vary among iPod/iPhone models.

### Play modes (CD, USB)

Select the playback mode.

- These modes can be combined with the repeat play feature.

- 1 Press [PLAY MENU] repeatedly to select "PLAYMODE".
- 2 Press [▲, ▼] to select the following mode and press [OK].

<b>OFF PLAYMODE</b>	Select to cancel the play mode setting.
<b>1-TRACK</b> ("1, ♪" is displayed.)	Only plays the selected track. (Skip to the desired track (⇒ left))
<b>1-ALBUM</b> ("1, ■" is displayed.)	Only plays the selected MP3 album.
<b>RANDOM</b> ("RND" is displayed.)	Plays the contents randomly.
<b>1-ALBUM RANDOM</b> ("1, ■, RND" is displayed.)	Plays the tracks in the selected MP3 album randomly. • Press [▲] or [▼] to select the MP3 album.

- 3 Press [▶/||] to start play.



- When using iPod/iPhone, use the setting on the iPod/iPhone.
- During random play, you cannot skip to the previous track.
- The current play mode is cleared when you open the sliding door for discs.

### Repeat play (CD, USB)

- 1 Press [PLAY MENU] repeatedly to select "REPEAT".
- 2 Press [▲, ▼] to select "ON REPEAT" and press [OK].  
• "↺" is displayed.



- When using iPod/iPhone, use the setting on the iPod/iPhone.
- To cancel repeat play, select "OFF REPEAT" in step 2. (The mode is also cancelled when you open the sliding door for discs.)

## SC-HC37DB

# Listening to DAB+

## Preparation

Make sure that the DAB antenna is connected. (⇒ 8)

### Memorising stations

To listen to DAB+ broadcasts, the available stations need to be memorised in this unit.

- This unit will automatically start the “DAB AUTO SCAN” and memorise the stations that are available in your region if the memory is empty.

Press [RADIO] repeatedly to select “DAB+”.



“SCAN FAILED” is displayed when the auto scan is unsuccessful. Locate the position with the best reception (⇒ 12, “To verify or improve the signal reception quality”) and then re-scan DAB+ stations.

### To re-scan DAB+ stations

When new stations are added or when the antenna has been moved, reperform the auto scan.

- 1 Press [PLAY MENU] repeatedly to select “AUTOSCAN” and then press [OK].
- 2 While “START ?” is flashing, Press [OK].



When updating the memory with the auto scan, preset stations will be erased. Preset them again (⇒ right).

### Listening to the memorised stations

#### Preparation\*1

- 1 Press [RADIO] to select “DAB+”.
- 2 Press [PLAY MENU] repeatedly to select “TUNEMODE” and then press [OK].
- 3 Press [▲, ▼] to select “STATION” and then press [OK].

- 1 Press [RADIO] to select “DAB+”.
- 2 Press [◀◀/▶▶] or [▶▶/▶▶] to select the station.

### Presetting DAB+ stations

You can preset up to 20 DAB+ stations.

#### Preparation

- Press [RADIO] repeatedly to select “DAB+”.

- 1 While listening to a DAB broadcast Press [OK].
- 2 Press [▲, ▼] to select the desired preset channel number and then press [OK].



- You cannot preset stations when the station is not broadcasting or when the secondary service is selected.
- The station occupying a channel is erased if another station is preset in that channel.

### Listening to preset DAB+ stations

#### Preparation\*1

- 1 Press [RADIO] to select “DAB+”.
- 2 Press [PLAY MENU] repeatedly to select “TUNEMODE” and then press [OK].
- 3 Press [▲, ▼] to select “PRESET” and then press [OK].

- 1 Press [RADIO] to select “DAB+”.
- 2 Press [◀◀/▶▶] or [▶▶/▶▶] to select the station.



- To select by preset, make sure that stations have already been preset manually.
- To add additional preset stations, select the station using the method mentioned in “Listening to the memorised stations” (⇒ left).

### Listening to the secondary service

Some DAB+ stations provide a secondary service as well as the primary service. If the station you are listening to is providing secondary service, “▼” will be displayed.

- 1 While “▼” is displayed. Press [PLAY MENU] repeatedly to select “DAB SECONDARY” and then press [OK].
- 2 Press [▲, ▼] to select the secondary service and press [OK].



The setting will go back to primary service when changes are made (e.g. the station is changed).

\*1: The “TUNEMODE” setting is memorised until it is changed.

## Display

Press [DISPLAY] to change the display.

The information will scroll through the display.  
Each time you press the button:

- Dynamic label:** Information about the broadcast  
**PTY display:** Programme type  
**Ensemble label:** The name of the ensemble  
**Frequency display:** The frequency block and frequency is displayed.

### Time display

## Automatic clock adjustment

If the DAB broadcast includes time information, this unit's clock will be automatically updated.

- 1 Press [PLAY MENU] repeatedly to select "AUTO CLOCK ADJ" and then press [OK].
- 2 Press [▲, ▼] to select "ON ADJUST" and then press [OK].



Select "OFF ADJUST" to turn the automatic clock adjustment function off.

## To verify or improve the signal reception quality

To check the signal reception quality, at least 1 frequency block needs to be successfully memorised.

- If "SCAN FAILED" is displayed after "DAB+" is selected or after an auto scan, proceed to "Manually tuning 1 frequency block" (⇒ below)
- If stations have already been memorised to this unit, proceed to "Checking the DAB+ signal reception quality" (⇒ right)

### Manually tuning 1 frequency block

Use this function to scan 1 frequency block after adjusting the position of the DAB antenna.

#### Preparation

Note down a frequency block that can be received in your region (e.g., 9C 206.352 MHz).

- 1 While "SCAN FAILED" is displayed.  
Adjust the position of the DAB antenna.
- 2 Press [PLAY MENU] repeatedly to select "TUNEMODE" and then press [OK].
- 3 Press [▲, ▼] to select "MANUAL" and then press [OK].\*1
- 4 Press [▲, ▼] to select the frequency block that is receivable in your region and then press [OK].



- If broadcasting stations are memorised, proceed to "To re-scan DAB+ stations" to memorise stations on other frequency blocks.
- If "SCAN FAILED" is still displayed, repeat steps 1 to 4 until a station is memorised. If the situation does not improve, try using an outdoor DAB antenna or consult your dealer.

### Checking the DAB+ signal reception quality

- 1 While listening to the DAB broadcast:  
Press [PLAY MENU] repeatedly to select "SIGNAL QUALITY" and then press [OK].
  - The current frequency block is displayed and then the reception quality is indicated.

Reception quality  
0 (poor) - 8 (excellent)



- 2 If the signal reception quality is poor, move the antenna to a position where the reception quality improves.
- 3 To continue checking the quality of other frequency blocks  
Press [▲, ▼] again and select the desired frequency.
- 4 Press [OK] to exit.



If the antenna has been adjusted, perform auto scanning and update the station memory. (⇒ 11)

## Changing the Auto scan frequency range

Only the frequencies currently used in Australia as of February 2012 on BAND III are Auto scanned ("AUSTRALIA", factory setting).

Select "ALL BAND III" when you want to store stations on other frequencies to memory.

- 1 Press [PLAY MENU] repeatedly to select "SCAN MODE".
- 2 Press [▲, ▼] to select "ALL BAND III" or "AUSTRALIA" and then press [OK].
  - The "DAB AUTO SCAN" begins automatically.



- The DAB preset channels are erased when the "SCANMODE" is changed.
- If the play timer has been set and DAB+ is the music source, the timer switches off. (⇒ 14)

\*1: The "TUNEMODE" setting is memorised until it is changed.

---

# Listening to FM/AM radio

AM radio is only available for **SC-HC37**

You can preset up to 30 FM channels / 15 AM channels.

## Preparation

Make sure that the antenna(s) are connected. (⇒ 8)



A station previously stored is overwritten when another station is stored in the same channel preset.

## Presetting stations automatically

- 1 Press [RADIO] to select "FM" or "AM".
- 2 Press [PLAY MENU] repeatedly to select "A.PRESET" and then press [OK].
- 3 Press [▲, ▼] to select "LOWEST" or "CURRENT" and then press [OK].

### LOWEST:

To begin auto preset with the lowest frequency (FM 87.50, AM 520 or AM 522).

### CURRENT:

To begin auto preset with the current frequency.\*

\* To change the frequency, refer to "Manual tuning and presetting".

The tuner starts to preset all the stations it can receive into the channels in ascending order.

## Listening to a preset channel

### Preparation

- 1 Press [RADIO] to select "FM" or "AM".
- 2 Press [PLAY MENU] repeatedly to select "TUNEMODE" and then press [OK].
- 3 Press [▲, ▼] to select "PRESET" and then press [OK].

- 1 Press [RADIO] to select "FM" or "AM".

- 2 Press [◀◀/◀◀] or [▶▶/▶▶] to select the channel.

### Manual tuning and presetting

Select a radio broadcast.

- 1 Press [RADIO] to select "FM" or "AM".
- 2 Press [PLAY MENU] repeatedly to select "TUNEMODE" and then press [OK].
- 3 Press [▲, ▼] to select "MANUAL" and then press [OK].
- 4 Press [◀◀/◀◀] or [▶▶/▶▶] to tune to the required station.
  - To start automatic tuning, press and hold [◀◀/◀◀], [▶▶/▶▶] until the frequency starts scrolling. Tuning stops when a station is found.

To preset the channel

- 5 While listening to the radio broadcast Press [OK].
- 6 Press [▲, ▼] to select the channel and then press [OK].

### To improve FM sound quality

- 1 While receiving FM broadcasts, press [PLAY MENU] repeatedly to select "FM MODE" and then press [OK].
- 2 Press [▲, ▼] to select "MONO" and then press [OK].
  - This setting can be preset and memorised. To do so, continue to step 5 of "Manual tuning and presetting".



- Select "STEREO" in step 2 to return to stereo broadcasts.
- "MONO" is cancelled if the frequency is changed.
- If "MONO" is selected, regardless of the type of signal this unit is receiving, "FM MONO" is displayed. (⇒ below)

### To display the current FM signal status

While receiving FM broadcast, press [DISPLAY].

"FM ST": The FM signal is in stereo.

"FM": The FM signal is in monaural.

- "FM" is also displayed even if this unit is not tuned to a station.



"STEREO" is displayed when this unit tunes to a stereo broadcast.

---

# Internet Radio

This unit can output Internet radio if "vTuner for Panasonic" is installed on your iPhone/iPod touch.

### Preparation

- Install "vTuner for Panasonic" to your iPhone/iPod touch.
- Install iOS 5.0 or later.

- 1 Insert the iPhone/iPod touch to this unit.

- 2 Press [iPod] repeatedly to select "VTUNER".
  - ↳ "vTuner for Panasonic" starts.



- Visit the below website for the following information about "vTuner for Panasonic":  
<http://radio.vtuner.com/panasonic/en/>  
(Compatible iPhone/iPod touch models and software versions, purchasing, installation and operation details.)
- A pop-up screen may appear on your iPhone/iPod touch. Follow the indicated instructions.

## Sound adjustment

The following sound effects can be added to the audio output.

- 1 Press [SOUND] repeatedly to select the effect and then press [OK].
- 2 Press [▲, ▼] to select the setting and then press [OK].

Direct-Vocal Surround (D.SURROUND)	“LEVEL 1”, “LEVEL 2” or “OFF”. ● The factory preset is “OFF”.
Preset EQ (PRESET EQ)	“HEAVY” (heavy), “SOFT” (soft), “CLEAR” (clear), “VOCAL” (vocal) or “FLAT” (flat/off). ● The factory preset is “HEAVY”.
Bass (BASS) or Treble (TREBLE)	Adjust the level (−4 to +4).
Dynamic Bass*1 (D.BASS)	“ON D.BASS” or “OFF D.BASS”. ● The factory preset is “ON D.BASS”.

\*1: This function can also be selected with the [D.BASS] button on the unit.

- You may experience a reduction in sound quality when these effects are used with some sources. If this occurs, turn the sound effects off.

## Clock and Timer

### Setting the clock

This is a 24-hour clock.

- 1 Press [SETUP] repeatedly to select “CLOCK” and then press [OK].
- 2 Press [▲, ▼] to set the time and then press [OK].



- To display the clock, press [SETUP] repeatedly to select “CLOCK” and then press [OK] once. The time is displayed for 10 seconds.  
(During standby, press [iPod MENU, DISPLAY] once.)
- The clock is reset when there is a power failure or when the AC mains lead is removed.
- Reset the clock regularly to maintain accuracy.

### Play timer

You can set the timer so this unit turns on at a certain time every day.

#### Preparation

Set the clock (⇒ left).

#### ■ Setting the timer

- 1 Press [SETUP] repeatedly to select “TIMER ADJ” and then press [OK].
- 2 Press [▲, ▼] to set the starting time (“ON TIME”) and then press [OK].
- 3 Press [▲, ▼] to set the finishing time (“OFF TIME”) and then press [OK].



- To display the timer settings, press [SETUP] repeatedly to select “TIMER ADJ” and then press [OK] once.  
(During standby, press [iPod MENU, DISPLAY] twice.)
- The music source and volume will also be displayed if the timer is turned on. (⇒ below)

#### ■ Turn the timer on

- 1 Select the music source\*2 and set the desired volume.
- 2 Press [SETUP] repeatedly to select “TIMER SET” and then press [OK].
- 3 Press [▲, ▼] to select “SET” and then press [OK].  
● ☺ is displayed.
- 4 Press [⏻] to turn the unit off.



\*2: “CD”, “USB”, “IPOD”, “DAB+” (SC-HC37DB), “FM” and “AM” (SC-HC37) can be set as the music source.

- This unit can be used as normal after the timer is set, however:
  - Turn the unit to standby mode before the timer start time.
  - Even if the audio source or the volume is changed, the timer will still use the audio source and volume that was set when the timer was turned on.
- To turn the timer off, select “OFF” in step 3.
- The unit will turn on at the preset time, with the volume increasing gradually to the preset level.

### Sleep timer

The sleep timer can turn the unit off after a set time.

- 1 Press [SETUP] repeatedly to select “SLEEP” and then press [OK].
- 2 Press [▲, ▼] to set the time (in minutes) and then press [OK].

“SLEEP 30” ↔ “SLEEP 60” ↔ “SLEEP 90” ↔ “SLEEP 120”  
↖ OFF (Cancel) ↗

- The remaining time is indicated on the unit’s display except when other operations are performed.
- The play timer and sleep timer can be used together. The sleep timer always has priority.

## Others

### Automatic standby

As a factory preset, this unit will always turn off automatically if there is no sound output and no operation for 30 minutes.

#### To cancel this function

- 1 Press [SETUP] repeatedly to select "AUTO OFF" and then press [OK].
- 2 Press [▲, ▼] to select "OFF" and then press [OK].



- To turn automatic standby on, select "ON" in step 2.
- This setting cannot be selected when "DAB+" (SC-HC37DB), "FM" or "AM" (SC-HC37) is the source.

### Display brightness

The brightness of this unit's display can be changed.

- 1 Press [SETUP] repeatedly to select "DIMMER" and then press [OK].
- 2 Press [▲, ▼] to select "ON" and then press [OK].



To cancel the dimmer, select "OFF" in step 2.

### Changing the main unit and remote control code

When other Panasonic equipment responds to the supplied remote control, change the remote control code.

- 1 Press [CD] to select "CD".
- 2 Press and hold [CD] on the main unit and [▲] on the remote control until the main unit's display shows "REMOTE 2".
- 3 Press and hold [OK] and [▲] on the remote control for at least 4 seconds.



To change the mode back to "REMOTE 1", repeat the steps above by replacing [▲] with [▼].

## Troubleshooting

Before requesting service, make the following checks. If you are in doubt about some of the check points, or if the solutions indicated in the following guide do not solve the problem, consult your dealer for instructions.

### To return all settings to the factory preset

When the following situations occur, reset the memory:

- There is no response when buttons are pressed.
  - You want to clear and reset the memory contents.
- ① Disconnect the AC mains lead. (Wait for at least 3 minutes before proceeding to step ②.)
  - ② While pressing and holding down [⏻/⏪] on the main unit, reconnect the AC mains lead.
    - "-----" appears on the display.
  - ③ Release [⏻/⏪].



All the settings are returned to the factory preset. You will need to reset the memory items.

### Common problems

#### Humming heard during play.

- An AC mains lead or fluorescent light is near the cords. Keep other appliances and cords away from this unit's cables.

#### MP3 cannot be read.

- You may not be able to play MP3 if you have copied a multi-session disc that has no data between sessions.
- When creating a multi-session disc, it is necessary to close the session.
- The amount of data on the disc is too small. Set the amount of data to above 5 MB.

### Disc operations

#### Incorrect display or play will not start.

- Make sure that the disc is compatible with this unit. (⇒ 4)
- There is moisture on the lens. Wait for about an hour and then try again.

## USB operations

### No response when [▶/||] is pressed.

- Disconnect the USB device and then reconnect it. Alternatively, turn the unit off and on again.

### The USB drive or its contents cannot be read.

- The USB drive format or its contents is/are not compatible with the unit (⇒ 4).
- The USB host function of this product may not work with some USB devices.

### Slow operation of the USB flash drive.

- Large file size or high memory USB flash drive takes longer time to read.

### The elapsed time displayed is different from the actual play time.

- Copy the data to another USB device or backup the data and reformat the USB device.

## Radio

### SC-HC37DB DAB+ reception is poor.

- Keep the antenna away from computers, televisions, other cables and cords.
- Use an outdoor antenna (⇒ 8).

### A beat sound or noise is heard while receiving radio broadcast.

- Confirm the antenna(s) are properly connected. (⇒ 8)
- Adjust the position of the antenna.
- Try to keep a certain amount of distance between the antenna and AC mains lead.
- Try to use outdoor antenna if there are buildings or mountains nearby.
- Switch the television or other audio player off or separate it from the unit.
- Keep this unit away from mobile phones if the interference is apparent.

### SC-HC37 A low hum or noise is heard during AM broadcast.

- Keep the AM antenna away from this unit, other cables and cords.

### SC-HC37 AM Stations cannot be selected.

Change the AM frequency step.

① Press [RADIO] to select "AM".

② Press and hold [RADIO] on the unit.

After a few seconds the display changes to show the current lowest frequency. Continue to hold the button down. The lowest frequency changes and the step is changed.

## iPod/iPhone operations

### Cannot charge or operate.

- Check that the iPod/iPhone is connected firmly. (⇒ 9)
- The battery of the iPod/iPhone is depleted. Charge the iPod/iPhone, and then operate again.
- When unexpected operation occurs while using the iPod/iPhone, connect the iPod/iPhone again or try to restart the iPod/iPhone.

## Remote control

### The remote control doesn't work properly.

- The remote control and this unit are using a different code. (⇒ 17, "REMOTE □")

## Messages

### The following messages or service numbers may appear on the unit's display.

"--:--"

- You plugged the AC mains lead in for the first time or there was a power failure recently. Set the time (⇒ 14).

"ADJUST CLOCK"

- Clock is not set. Adjust the clock accordingly.

"ADJUST TIMER"

- Play timer is not set. Adjust the play timer accordingly.

"AUTO OFF"

- The unit has been left unused for about 30 minutes and will shut down in a minute. Press any button to cancel it.

"CANNOT SET"

- Select an audio source other than "VTUNER".

"CHECKING CONNECTION"

- The unit is checking the connected iPod/iPhone. If this display keeps appearing, make sure that iPod/iPhone is inserted correctly and try again (⇒ 9).

"ERROR"

- Incorrect operation is performed. Read the instructions and try again.

"F61"

- There is a power supply problem. Consult the dealer.

"ILLEGAL OPEN"

- Sliding door is not in correct position. Turn the unit off and on again. If this display appears again, consult the dealer.

"IPOD OVER CURRENT ERROR"

- The iPod/iPhone is drawing too much power. Remove the iPod/iPhone and turn the unit off and on again.



---

**“NODEVICE”**

- The iPod/iPhone device is not inserted correctly. Read the instructions and try again (⇒ 9).
- The USB device is not inserted. Check the connection.

---

**“NO DISC”**

- Insert the disc to be played (⇒ 9).

---

**“NO MEMORY”**

- There are no preset DAB+ stations to select. Preset some channels. (⇒ 11)

---

**“NO PLAY”**

- A CD that is not in CD-DA or MP3 format is inserted. It cannot be played.
- If there are more than 255 albums or folders (audio and non-audio), some of the MP3 files in these albums may not be read and played. Transfer these music albums to another USB. Alternatively, reformat the USB device and save these music albums prior to saving the other non-audio folders.

---

**“NOT SUPPORTED”**

- You have inserted an iPod/iPhone that cannot be played (⇒ 4). Insert correctly and try again if iPod/iPhone is compatible.
- If the iPod/iPhone is compatible, turn it on before inserting it to this unit.

---

**“READING”**

- The unit is checking the CD information. After this display has disappeared, start operating.

---

**“REMOTE □” (“□” stands for a number.)**

- The remote control and this unit are using different codes. Change the code on the remote control.
  - When “REMOTE 1” is displayed, press and hold [OK] and [▼] for more than 4 seconds.
  - When “REMOTE 2” is displayed, press and hold [OK] and [▲] for more than 4 seconds.

---

**“START ERROR”**

- Check the iPhone/iPod touch.  
Visit the below website for more information:  
<http://radio.vtuner.com/panasonic/en/>

---

**“USB OVER CURRENT ERROR”**

- The USB device is drawing too much power. Switch to “CD” mode, remove the USB and turn the unit off.

---

**SC-HC37DB “DATA”**

- Data broadcast being received over the DAB broadcast signal cannot be used on this unit.

---

**SC-HC37DB “NO SERVICE”**

- The station is currently not broadcasting.

---

**SC-HC37DB “NO SIGNAL”**

- This station cannot be received. Check your antenna (⇒ 8).

---

**SC-HC37DB “SCAN FAILED”**

- Stations are not receivable. Check your antenna and try Auto scanning (⇒ 11).  
If “SCAN FAILED” is still displayed find the best signal reception with the “MANUAL” tuning function. (⇒ 12)

---

**SC-HC37DB “SCRAMBLED”**

- The broadcast station being received cannot be accessed.

# Specifications

## ■ GENERAL

Power consumption	25 W
Power consumption in standby mode*1	Approx. 0.2 W
Power supply	AC 220 V to 240 V, 50 Hz

### Dimensions (W×H×D)

480 mm×197 mm×84 mm  
(Depth without stand 75 mm)

Mass Approx. 2.5 kg

Operating temperature range 0 °C to +40 °C

Operating humidity range  
35 % to 80 % RH (no condensation)

## ■ AMPLIFIER SECTION

### Output power

#### RMS Output Power Stereo mode

##### Front Ch (both ch driven)

20 W per channel (6 Ω), 1 kHz, 10 % THD

Total RMS Stereo mode power 40 W

## ■ TUNER SECTION

Preset Memory FM 30 stations

**SC-HC37** AM 15 stations

### Frequency Modulation (FM)

#### Frequency range

87.50 MHz to 108.00 MHz (50 kHz step)

Antenna terminals 75 Ω (unbalanced)

### **SC-HC37** Amplitude Modulation (AM)

#### Frequency range

520 kHz to 1630 kHz (10 kHz step)

522 kHz to 1629 kHz (9 kHz step)

## ■ **SC-HC37DB** DAB SECTION

DAB memories 20 channels

### Frequency Band (Wavelength)

Australia 9A to 9C  
(202.928 MHz to 206.352 MHz)

Band III (Europe/Australia) 5A to 13F  
(174.928 MHz to 239.200 MHz)

### Sensitivity \*BER 4x10<sup>-4</sup>

Min Requirement -98 dBm

### DAB External Antenna

Terminal F - Connector (75 Ω)

## ■ TERMINAL SECTION

### USB Port

USB Standard USB 2.0 full speed

Media file format support MP3 (\*.mp3)

USB device file system FAT12, FAT16, FAT32

USB port power DC OUT 5 V 500 mA MAX

### iPod Connector

DC OUT 5 V 1.0 A MAX

### Phone jack

#### Terminal

Stereo, Ø3.5 mm jack

## ■ DISC SECTION

### Disc played (8 cm or 12 cm)

CD, CD-R/RW (CD-DA, MP3\*)

\* MPEG-1 Layer 3, MPEG-2 Layer 3

### Pick up

Wavelength 790 nm (CD)

Laser power CLASS 1

### Audio output (Disc)

Number of channels 2 ch (FL, FR)

## ■ SPEAKER SYSTEM SECTION

### Type

1 way, 1 speaker system (Passive Radiator)

### Speaker unit(s)

Full range 6.5 cm Cone type×1 per channel

Passive Radiator 8 cm×2 per channel

Impedance 6 Ω



\*1: When the iPod/iPhone is not charging.

● Specifications are subject to change without notice.

Mass and dimensions are approximate.

● Total harmonic distortion is measured by a digital spectrum analyzer.

## Unit and media care

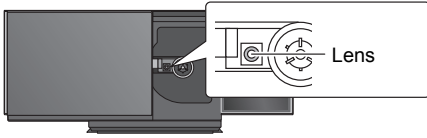
Pull out the AC mains lead from the outlet before maintenance.

### ■ Clean this unit with a soft, dry cloth

- When dirt is heavy, wring a cloth moistened in water tightly to wipe the dirt, and then wipe it with a dry cloth.
- When cleaning the speaker covers, use a fine cloth. Do not use tissues or other materials (towels, etc.) that can fall apart. Small grains may get stuck inside the speaker cover.
- Never use alcohol, paint thinner or benzene to clean this unit.
- Before using chemically treated cloth, carefully read the instructions that came with the cloth.

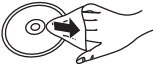
### ■ Maintenance of the lens

- Clean the lens regularly to prevent malfunctions. Use a blower to remove dust and a cotton swab if it is extremely dirty.
- You cannot use a CD type lens cleaner.
- Do not leave the sliding door open for prolonged periods of time. This will cause the lens to get dirty.
- Be careful not to touch the lens with your fingers.



### ■ Clean discs

**DO**



**DO NOT**



Wipe with a damp cloth and then wipe dry.

### ■ Disc handling precautions

- Handle discs by the edges to avoid inadvertent scratches or fingerprints on the disc.
- Do not attach labels or stickers to discs.
- Do not use record cleaning sprays, benzene, thinner, static electricity prevention liquids or any other solvent.
- Do not use the following discs:
  - Discs with exposed adhesive from removed stickers or labels (rented discs etc.).
  - Discs that are badly warped or cracked.
  - Irregularly shaped discs, such as heart shapes.

### ■ To dispose or transfer this unit

The unit may keep the user settings information in the unit. If you discard this unit either by disposal or transfer, then follow the procedure to return all the settings to the factory presets to delete the user settings. (⇒ 15, "To return all settings to the factory preset")

## Licenses

Made for



iPod



iPhone

"Made for iPod" and "Made for iPhone" mean that an electronic accessory has been designed to connect specifically to iPod, or iPhone, respectively, and has been certified by the developer to meet Apple performance standards.

Apple is not responsible for the operation of this device or its compliance with safety and regulatory standards.

Please note that the use of this accessory with iPod, or iPhone may affect wireless performance. iPhone, iPod, iPod classic, iPod nano, and iPod touch are trademarks of Apple Inc., registered in the U.S. and other countries.

MPEG Layer-3 audio coding technology licensed from Fraunhofer IIS and Thomson.

---

**Panasonic Corporation**  
**Web Site:** <http://panasonic.net>

En