



Thank you for purchasing this product.

For optimum performance and safety, please read these instructions carefully.

Please keep this manual for future reference.



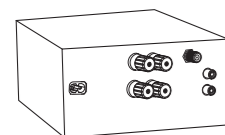
Panasonic Corporation
Web Site: <http://panasonic.net>

Do the procedures with the remote control. You can also use the buttons on the main unit if they are the same.

Your system and the illustrations can look differently.

These operating instructions are applicable to the following system.

System	SC-PMX5DB
Main unit	SA-PMX5DB
Speakers	SB-PMX5DB



Back of product



CAUTION	• LASER HOODS MUST BE KEPT OPEN. DO NOT STARE INTO BEAMS. FDA 21 CFR 108.11
CAUTION	• CLASS 1H VISIBLE AND INVISIBLE LASER RADIATION WHEN OPEN. DO NOT VIEW OPTICALLY WHEN OPTICAL INSTRUMENTS, TELESCOPES AND BINOCLARS ARE USED TO VIEW OPTICALLY. ALWAYS USE APPROPRIATE SAFETY PROCEDURES. ALWAYS USE APPROPRIATE SAFETY PROCEDURES.
WARNING	• ALWAYS WEAR PROTECTIVE EYEWEAR WHEN USING LASER INSTRUMENTS. ALWAYS WEAR PROTECTIVE EYEWEAR WHEN USING LASER INSTRUMENTS.
FORSIGTIG	• SYNDRODDI OG VEIÐRUGI LASERSTRÁLINGU KLASSA 1H. HÁÐR LAGET ER SÖNNI. ÁGANGI ÁTIL EYNA OG ÖÐRUM OPTISKA MÖGNUM ER AÐ GÆTAST. ALLTÍÐ NOTIÐ ÖRÐRUGA LASERSTRÁLINGU KLASSA 1H. HÁÐR LAGET ER SÖNNI. ÁGANGI ÁTIL EYNA OG ÖÐRUM OPTISKA MÖGNUM ER AÐ GÆTAST.
VORSICHT	• SICHTBARE UND UNSICHTBARE LASERSTRALUNG KLASSE 1H. NIEMAL ANZUGEHEN. AUF KEINER WEISE MIT OPTISCHEN INSTRUMENTEN BEOBSACHTEN. LASERSTRALUNG KLASSE 1H. NIEMAL ANZUGEHEN. AUF KEINER WEISE MIT OPTISCHEN INSTRUMENTEN BEOBSACHTEN.
ATTENTION	• RAYONNEMENT LASER VISIBLE ET INVISIBLE. CLASSE 1H EN CAS D'OUVERTURE. NE PAS REGARDER OPTIQUEMENT À L'ŒIL. NE PAS REGARDER OPTIQUEMENT À L'ŒIL À L'AIDE D'INSTRUMENTS OPTIQUES.
PRECAUCION	• RAYONNEMENT LASER VISIBLE E INVISIBLE DE CLASSE 1H EN CAS D'OUVERTURE. NO VEA PRECARAMENTE CON INSTRUMENTOS OPTICOS.

Inside of product

Panasonic®

Operating Instructions

CD Stereo System

Model No. **SC-PMX5**

Specifications

Amplifier section

RMS output power stereo mode

Front Ch (both ch driven)	20 W per channel (6 Ω), 1 kHz, 10% THD
Total RMS stereo mode power	40 W

Tuner, terminals section

Preset station FM 30 stations, AM 15 stations

Frequency modulation (FM)

Frequency range 87.50 MHz to 108.00 MHz (50 kHz step)

Antenna terminals 75 Ω (unbalanced)

Amplitude modulation (AM)

Frequency range 522 kHz to 1629 kHz (9 kHz step)

520 kHz to 1630 kHz (10 kHz step)

Headphones jack

Terminal Stereo, 3.5 mm jack

AUX

Terminal RCA jack

DAB section

DAB memories 20 channels

Frequency band (wavelength)

Band III (Australia) 9A to 9C (202.928 MHz to 206.352 MHz)

Band III (Others) 5A to 13F (174.928 MHz to 239.200 MHz)

Sensitivity *BER 4x10⁻⁴

Min requirement -98 dBm

DAB external antenna

Terminal F - Connector (75 Ω)

Disc section

Disc played (8 cm or 12 cm) CD, CD-R/RW (CD-DA, MP3* formatted disc)

Pick up

Wavelength	790 nm (CD)
Laser power	CLASS 1 (CD)

Audio output (Disc)

Number of channels	2 ch (FL, FR)
FL = Front left channel, FR = Front right channel	
* MPEG-1 Layer 3, MPEG-2 Layer 3	

USB section

USB port

USB standard	USB 2.0 full speed
Media file format support	MP3 (*.mp3)
USB device file system	FAT 12, FAT 16, FAT 32
USB port power	500 mA (max)

Speaker section

Type 3 way, 3 speaker system (bass reflex)

Speaker unit(s)

Woofer	1.9 cm soft dome type
Tweeter	14 cm cone type
Super tweeter	1.5 cm piezo type

Impedance 3 Ω

Output sound pressure 81 dB/W (1 m)

Frequency range 41 Hz to 65 kHz (-16 dB)

48 Hz to 58 kHz (-10 dB)

Dimensions (W x H x D) 161 mm x 240 mm x 262 mm

Mass 2.6 kg

- If you see this symbol -

Information on Disposal in other Countries outside the European Union

This symbol is only valid in the European Union. If you wish to discard this product, please contact your local authorities or dealer and ask for the correct method of disposal.

MPEG Layer-3 audio coding technology licensed from Fraunhofer IIS and Thomson.

Made for **iPod iPhone**

"Made for iPod" and "Made for iPhone" mean that an electronic accessory has been designed to connect specifically to iPod, or iPhone, respectively, and has been certified by the developer to meet Apple performance standards.

Apple is not responsible for the operation of this device or its compliance with safety and regulatory standards.

Please note that the use of this accessory with iPod, or iPhone may affect wireless performance.

iPhone, iPod, iPod classic, iPod nano, and iPod touch are trademarks of Apple Inc., registered in the U.S. and other countries.

General

Power supply	AC 220 to 240 V, 50 Hz
Power consumption	85 W
Dimensions (W x H x D)	175 mm x 240 mm x 349.8 mm
Mass	4.5 kg
Operating temperature range	0°C to +40°C
Operating humidity range	35% to 80% RH (no condensation)

Power consumption in standby mode
0.7 W (approximate)

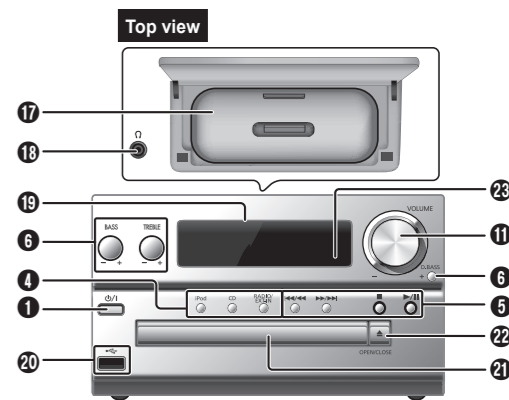
Note:

- Specifications are subject to change without notice. Mass and dimensions are approximate.
- Total harmonic distortion is measured by the digital spectrum analyzer.

Control guide



- Standby/on switch** [⏻], [⏻/⏹]
Press to switch the unit from on to standby mode or vice versa. In standby mode, the unit is still consuming a small amount of power.
- Numeric buttons [1 to 9, 0, ±10]**
To select a 2-digit number
Example: 16: [±10] → [1] → [6]
- Delete a programmed track**
- Select audio source
- Basic playback control
- Select the sound effects
- Select the iPod menu item
- View content information
Decrease the brightness of the display panel
Press and hold the button to use this function. To cancel, press and hold the button again.
- Clock and timer operation
- Set the program function
- Adjust the volume of the system
- Mute the sound of the system**
Press the button again to cancel. "MUTE" is also cancelled when you adjust the volume or when you switch off the system.
- Set the play menu item
- Set the radio menu item
- Select the option
- Automatically switch off the system**
When you are in disc, USB or iPod/iPhone source, the auto off function switches off the system if you do not use the system for 30 minutes. To cancel, press the button again.
- iPod/iPhone dock



- Headphones jack** [🎧]
• Plug type: Ø 3.5 mm stereo (not supplied)
• Avoid listening for prolonged periods of time to prevent hearing damage.
• Excessive sound pressure from earphones and headphones can cause hearing loss.
• Listening at full volume for long periods may damage the user's ears.
• Be sure to use the supplied or recommended headphones or earphones.
- Display panel
- USB port [🔌]
- Disc tray
- Open or close the disc tray
- Remote control sensor

Supplied accessories

Check and identify the supplied accessories.

1 x AC mains lead

1 x Remote control (N2QAYB000640)

1 x Remote control battery

1 x DAB antenna

Placement of speakers



The right and left speakers are the same. To prevent damage to the speakers, do not touch the speaker cones if you remove the nets.

Use only the supplied speakers.

The combination of the main unit and speakers give the best sound. You can cause damage to the system and decrease the sound quality if you use other speakers.

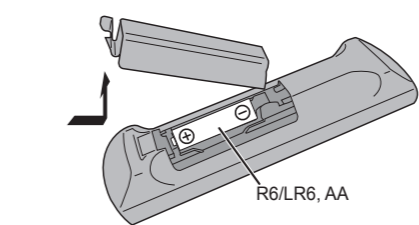
Note:

- Keep your speakers more than 10 mm from the main unit for ventilation.
- Put the speakers on a flat safe surface.
- These speakers do not have magnetic shielding. Do not put them near TVs, PCs or other equipment easily influenced by magnetism.
- When you play at high levels for a long period, it can cause damage to the system and decrease the life of the system.
- Decrease the volume in these conditions to prevent damage:
 - When you play distorted sound.
 - When you adjust the sound quality.

CAUTION!

- Use the speakers only with the recommended system. If not, you can cause damage to the amplifier and speakers and can cause a fire. Consult an approved service personnel if damage occurs or if there is a sudden apparent change in performance.
- Do the procedures included in these instructions when you attach the speakers.

Preparing the remote control



Use alkaline or manganese battery.

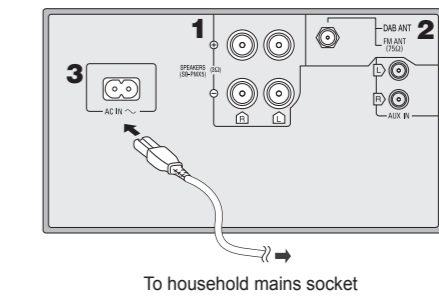
Install the battery so that the poles (+ and -) align with those in the remote control.

Point the remote control at the remote control sensor, away from obstacles, at a maximum range of 7 m directly in front of the main unit.

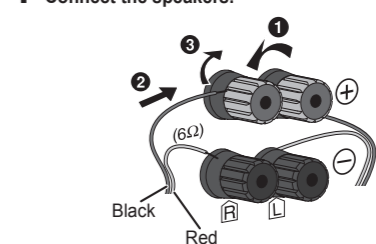
Making the connections

Conserving power

The system consumes approximately 0.7 W when it is in standby mode. Disconnect the power supply if you do not use the system. Some settings will be lost after you disconnect the system. You have to set them again.

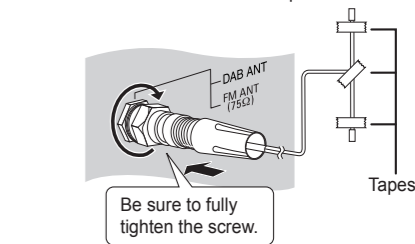


1 Connect the speakers.

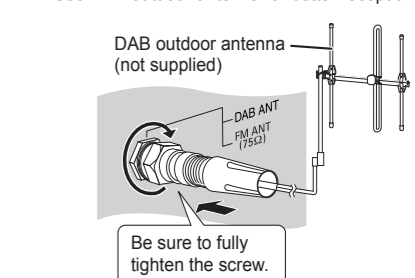


2 Connect the DAB antenna.

Place the antenna where reception is best.



Use DAB outdoor antenna for better reception.



3 Connect the AC mains lead.

Do not use an AC mains lead from other equipment.

Note:

These speakers do not have magnetic shielding. Do not put them near TVs, PCs or other equipment easily influenced by magnetism.

Disc

Playing disc

- Press **[▲, OPEN/CLOSE]** on the main unit to open the disc tray. Put in a disc with the label facing up. Press **[▲, OPEN/CLOSE]** again to close the disc tray.
- Press **[CD]** and then press **[▶/||]** to start playback.

Stop playback	Press [■] .
Pause playback	Press [▶/] . Press again to continue playback.
Skip album	Press [▲, ▼] .
Skip track	Press [◀◀] or [▶▶] (main unit: [◀◀/◀◀] or [▶▶/▶▶]).
Search through track	Press and hold [◀◀] or [▶▶] (main unit: [◀◀◀◀] or [▶▶▶▶]).

Viewing available information

You can view the available information on the display panel.

Press **[DISPLAY]**.

J : Track
⌂ : Album
TAG : ID3 tags

Note:

- Maximum characters that can be shown: approximately 16
- This system supports ver. 1.0, 1.1 and 2.3 ID3 tags.
- Text data that the system does not support can show differently.

Play menu

- Press **[PLAY MENU]** to select “PLAYMODE” or “REPEAT”.
- Press **[◀, ▶]** and then press **[OK]** to select the desired mode.

Clock and timers

Setting the clock

This is a 24-hour clock.

- Press **[CLOCK/TIMER]** to select “CLOCK”.
- Within 10 seconds, press **[▲, ▼]** to set the time.
- Press **[OK]**.

Press **[CLOCK/TIMER]** to show the clock for a few seconds.

Note:

Reset the clock regularly to maintain accuracy.

Sleep timer

The sleep timer switches off the system after the set time.

Press **[SLEEP]** to select the setting (in minutes). To cancel, select “OFF”.

30 MIN → 60 MIN → 90 MIN → 120 MIN → OFF

To show the remaining time
Press **[SLEEP]**.

Note:

- The sleep timer can be used together with the play timer.
- The sleep timer always comes first. Be sure not to set an overlap of timers.

PLAYMODE	
OFF PLAYMODE	Play all tracks.
1-TRACK TTR	Play one selected track on the disc. Press the numeric buttons to select the track.
1-ALBUM TALBUM (MP3)	Play one selected album on the disc. Press [▲, ▼] to select the album.
RANDOM RND	Play a disc randomly.
1-ALBUM RANDOM TALBUM RND (MP3)	Play all tracks in one selected album randomly. Press [▲, ▼] to select the album.
REPEAT	
ON REPEAT	Repeat playback.
OFF REPEAT	Cancel repeat playback.

Note:

- During random playback, you cannot skip to tracks which have been played or press the numeric buttons.
- Playmode function does not work with “Program playback”.
- The setting returns to the default “OFF PLAYMODE” when you open the disc tray.

Program playback

This function allows you to program up to 24 tracks.

[CD]

- Press **[PROGRAM]** in the stop mode. “PGM” is shown.
- Press the numeric buttons to select the desired track. Do this step again to program other tracks.
- Press **[▶/||]** to start playback.

(MP3)

- Press **[PROGRAM]** in the stop mode. “PGM” is shown.
- Press **[▲, ▼]** to select the desired album.
- Press **[▶▶]** and then press the numeric buttons to select the desired track.
- Press **[OK]**. Do steps 2 through 4 again to program other tracks.
- Press **[▶/||]** to start playback.

Cancel program mode	Press [PROGRAM] in the stop mode.
Check program contents	Press [◀◀] or [▶▶] when “PGM” is shown in the stop mode.
Clear the last track	Press [DEL] in the stop mode.
Clear all programmed tracks	Press [■] in the stop mode. “CLR ALL” is shown. Within 5 seconds, press [■] again.

Note:

The program memory is cleared when you open the disc tray.

Note on disc

- This system can play CD-R/RW with CD-DA or MP3 format content.
- Some CD-R/RW cannot be played because of the condition of the recording.
- MP3 files are defined as tracks and folders are defined as albums.
- This system can access up to:
 - CD-DA: 99 tracks
 - MP3: 999 tracks, 255 albums (including root folder) and 20 sessions.
- Disc must conform to ISO9660 level 1 or 2 (except for extended formats).
- Recordings will not necessarily be played in the order you recorded them.

Sound effects

Changing the sound quality

- Press **[SOUND]** to select a sound effect.
- Press **[◀, ▶]** to select the desired setting.

BASS	-4 to +4
TREBLE	
SURROUND ■■■■■■■■	“ON SURROUND” or “OFF SURROUND”
INPUT LEVEL (For AUX source)	“NORMAL” or “HIGH”

By main unit only

Turn **[BASS]** or **[TREBLE]** to adjust the level.

Preset EQ

Press **[PRESET EQ]** to select a setting.

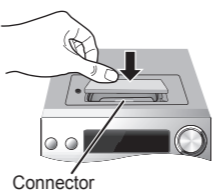
HEAVY	Adds punch to rock
SOFT	For background music
CLEAR	Clarifies higher frequencies
VOCAL	Adds gloss to vocal
FLAT	Cancel the sound effect

D.BASS

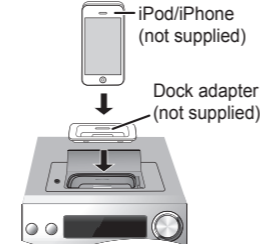
This function lets you enjoy a powerful bass effect.

Press **[D.BASS]** to select “ON D.BASS” or “OFF D.BASS”.

Using an iPod/iPhone



- Press to open the cover and insert a compatible dock adapter.



- Connect the iPod/iPhone firmly. Make sure to remove the iPod/iPhone from its case. Make sure to align your iPod/iPhone with the connector when inserting. Use a compatible dock adapter.
- Press **[iPod]** and then press **[▶/||]** to start playback.

Pause playback	Press [▶/] or [■] .
View iPod menu	Press [iPod MENU] .
Select an item	Press [▲, ▼] and then press [OK] .

For other operations, refer to “Disc”.

Note:

- Depending on the model, it may be necessary to remove the iPod/iPhone and select the album, artist, etc. on the iPod/iPhone.
- Operation results may vary depending on the iPod/iPhone models.
- Read the User Guide of the iPod/iPhone for the operating instructions.

Compatible iPod/iPhone

As of December 2011
Update your iPod/iPhone with the latest software before using this system.

iPod touch
1st, 2nd, 3rd, 4th generation

iPod nano
2nd, 3rd, 4th, 5th, 6th generation

iPod classic

iPhone 4S / iPhone 4 / iPhone 3GS / iPhone 3G / iPhone

Charging an iPod/iPhone

An iPod/iPhone is charged automatically when connected to the system (even when the system is in standby mode).

- See the iPod/iPhone display for its battery charging status.
- Disconnect the iPod/iPhone if it is not used for an extended period of time after charging is complete.
- Charging stops when the battery is fully charged. The battery will deplete naturally.

External equipment

USB

You can connect and play MP3 tracks from your USB device.
Do not use a USB extension cable. The system cannot recognise USB device connected through a cable.

- Connect the USB device to the USB port.

- Press **[EXT-IN]** to select “USB” and then press **[▶/||]** to start playback.

Stop playback	Press [■] during playback. “RESUME” is shown. Press [▶/] to continue playback from the start of the track. OR Press [■] two times to stop the playback fully.
---------------	--

For other operations, refer to “Disc”.

Compatible USB devices which are defined as mass storage class:

- USB devices that support bulk-only transfer.
- USB devices that support USB 2.0 full speed.

Note:

- Files are defined as tracks and folders are defined as albums.
- Track must have the extension “.mp3” or “.MP3”.
- This system can access up to:
 - 255 albums (including root folder)
 - 2500 tracks
 - 999 tracks in one album
- CBI (Control/Bulk/Interrupt) is not supported.
- NTFS file system is not supported (only FAT 12/16/32 file system is supported).
- Some files can fail to work because of the sector size.

DAB/DAB+

This system support DAB in “BAND III” bands.

DAB operation

- Press **[RADIO]** to select “DAB/DAB+”. If you select DAB/DAB+ for the first time, the system will start the “DAB AUTO SCAN” procedure.
- Press **[◀◀]** or **[▶▶]** to select the frequency of the required station.

DAB auto scan

- Press **[RADIO MENU]** to select “AUTOSCAN” and then press **[OK]**. “START?” is shown.
- Press **[OK]**. “DAB AUTO SCAN” is shown.

Note:

If no station is detected, “SCAN FAILED” is shown.

Memory presetting

20 channels can be preset.

- Press **[◀◀]** or **[▶▶]** to select a station.
- Press **[PROGRAM]**.
- Press the numeric buttons to select a preset number. Do steps 1 through 3 again to preset more stations.

Note:

- A station previously stored is overwritten when another station is stored in the same preset number.
- You cannot preset a station when the station is not broadcasting or when you have selected a secondary service.
- Previous station memory is cleared during auto scan.

Troubleshooting

Before requesting service, make the following checks. If you are in doubt about some of the check points, or if the solutions indicated do not solve the problem, consult your dealer for instructions.

Common problems

No operations can be done with the remote control.

- Examine that the battery is installed correctly.

Sound is distorted or no sound.

- Adjust the volume of the system.
- Switch off the system, determine and correct the cause, then switch the system on again. It can be caused by straining of the speakers through excessive volume or power, and when using the system in a hot environment.

A “humming” sound can be heard during playback.

- An AC mains lead or fluorescent light is near the cables. Keep other appliances and cords away from the cables of this system.

Disc

Display not shown correctly.

- Playback does not start.
- You have not put in the disc correctly. Put it in correctly.
 - Disc is dirty. Clean the disc.
 - Replace the disc if it is scratched, warped, or non-standard.
 - There is condensation. Let the system dry for 1 to 2 hours.

DAB

DAB reception is poor.

- Keep the antenna away from computers, TVs, other cables and cords.
- Use an outdoor antenna.

Radio

A beat sound is heard.

- Switch off the TV or move it away from the system.
- Set to “BP 1” or “BP 2” when in AM tuner mode.

Selecting a preset station

Press the numeric buttons, **[◀◀]** or **[▶▶]** (main unit: **[◀◀/◀◀]** or **[▶▶/▶▶]**) to select the preset station.

Viewing available information

Press **[DISPLAY]** to view available information.

You can view information about the DAB broadcast, program type, ensemble label, frequency and time.

DAB settings

- Press **[RADIO MENU]** to select an option.
- Press **[◀, ▶]** to select the desired setting and then press **[OK]**.

DAB SECONDARY

PRIMARY	To listen to primary service.
SECONDARY	To listen to secondary services. “ ▼ ” is shown.

AUTO CLOCK ADJ

ON ADJUST	Start auto clock adjustment.
OFF ADJUST	Cancel auto clock adjustment.

SCANMODE

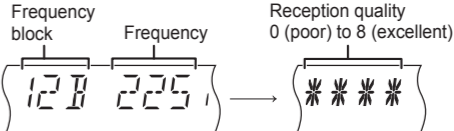
AUSTRALIA	Scan stations on frequencies used in Australia.
ALL BAND III	Scan stations on other frequencies.

DAB signal quality

When adjusting the antenna, you can check the reception quality.

- Press **[RADIO MENU]** to select “SIGNAL QUALITY”.

- Press **[◀, ▶]** to select frequency.



Radio

30 FM stations can be preset.

Preparation

Press **[RADIO]** to select “FM”.

Manual tuning

Press **[◀◀]** or **[▶▶]** to select the frequency of the required station. To tune automatically, press and hold the button until the frequency starts changing quickly.

Improving the sound quality

- Press **[RADIO MENU]** to select “FM MODE”.
- Press **[◀, ▶]** to select “MONO” and then press **[OK]**. To cancel, select “STEREO”. “MONO” is also cancelled when you change the frequency.

Automatic presetting

- Press **[RADIO MENU]** to select “A.PRESET”.
- Press **[◀, ▶]** to select “LOWEST” or “CURRENT” frequency.
- Press **[OK]** to start presetting.

Manual presetting

- Press **[◀◀]** or **[▶▶]** to tune in to the station.
- Press **[PROGRAM]**.
- Press the numeric buttons to select a preset number. Do steps 1 through 3 again to preset more stations. The new station replaces any station that occupies the same preset number.

Selecting a preset station

Press the numeric buttons, **[◀◀]** or **[▶▶]** (main unit: **[◀◀/◀◀]** or **[▶▶/▶▶]**) to select the preset station.

“NO SIGNAL”

- This station cannot be received. Check your antenna.

“SCAN FAILED”

- Stations are not receivable. Check your antenna and try auto scanning.

Memory reset (Initialisation)

Reset the memory when the following situations occur:

- There is no response when buttons are pressed.
- You want to clear and reset the memory contents.

- Disconnect the AC mains lead. Wait 3 minutes before you continue with step 2.
- While you press and hold **[⏏]** on the main unit, connect the AC mains lead again. “-----” is shown.
- Release **[⏏]**. All the settings are set back to the factory preset. It is necessary to set the memory items again.

Remote control code

When other Panasonic equipment responds to the remote control of this system, change the remote control code for this system.

To set the code to “REMOTE 2”

- Press and hold **[CD]** on the main unit and **[2]** on the remote control until “REMOTE 2” is shown.
- Press and hold **[OK]** and **[2]** for a minimum of 4 seconds.

To set the code to “REMOTE 1”

- Press and hold **[CD]** on the main unit and **[1]** on the remote control until “REMOTE 1” is shown.
- Press and hold **[OK]** and **[1]** for a minimum of 4 seconds.