

<https://eu.datanavi.ac.smartcloud.panasonic.com/documents/index.htm?model=CZ-RTC6Z>

## Please Read Before Starting

These instructions are all you need for most installation sites and maintenance conditions. If you require help for a special problem, contact our sales/service outlet or your certified dealer for additional instructions.

## Safety Precautions

We assume no responsibility for accidents or damages resulting from methods other than those described in the Installation Instructions or methods using unspecified parts. Malfunctions that occur due to unauthorised installation methods are not covered by the product warranty.

- This remote controller must be installed in accordance with National Wiring Regulations.
- Please also read installation instructions of connected devices.
- When relocating or repairing this remote controller, provide the Installation Instructions to the servicing personnel.

**WARNING**

This symbol refers to a hazard or unsafe practice which can result in severe personal injury or death.

**CAUTION**

This symbol refers to a hazard or unsafe practice which can result in personal injury or product or property damage.

**Prohibited matters**

## Precautions for Installation setup

### WARNING

- Turn off the circuit breaker of the units before installation.
- Select an installation location which is rigid and strong enough to support or hold this remote controller, and select a location for easy maintenance.
- Use only the parts specified by Panasonic as supplied accessories.
- Ensure cables are installed properly so that external forces cannot affect them.
- Disassembly and modification of this remote controller is not permitted under any circumstances.
- This remote controller must be installed by the sales dealer or installer.
- When installing the remote controller, use appropriate protective equipment and tools for safety.
- This remote controller should be securely installed in accordance with the Installation Instructions.
- Electric work must be performed by authorised personnel in accordance with the local regulations and in accordance with the Installation Instructions.
- To avoid malfunctions caused by radio wave interference, keep the remote controller away from devices such as other wireless device, microwaves and the device that use 2.4 GHz signal. Depending on the area, the module may not be available.
- Attach the electrical cover to the indoor unit securely.
- Make sure to connect the remote controller to the PCB and terminal board of the indoor unit properly.

### WARNING

- Do not set up in hospitals or places where electronic medical devices are located.
- If you have a cardiac pacemaker or implantable cardioverter defibrillator, please keep at least 15 cm away from the remote controller.
- Do not use the remote controller near to automatic control equipment (automatic door, fire alarms, etc.).
- In case of an abnormal condition (such as a burning smell), stop the indoor unit and turn the breaker OFF.
- Do not operate with wet hands.
- Do not splash water on the remote controller or use it in the bathroom.

### CAUTION

- Ground yourself to discharge static electricity before performing any wiring.
- Do not install the remote controller in places with direct sunlight or where the ambient temperature is 40 °C or more or is 0 °C or less. Follow "Specifications".
- The connecting cable must not touch piping directly.
- Do not set up where children can reach the remote controller.
- Do not stand on an unstable surface when operating or checking the remote controller.
- Do not use in special environments. Use in places with much oil (including machine oil), steam, flammable or corrosive gas, voltage fluctuation, surrounding the metal body, may lead to severe decrease in functionality and damage to parts.
- Do not use the remote controller nearby other wireless devices, microwaves, cordless phones, or facsimiles.

### NOTE

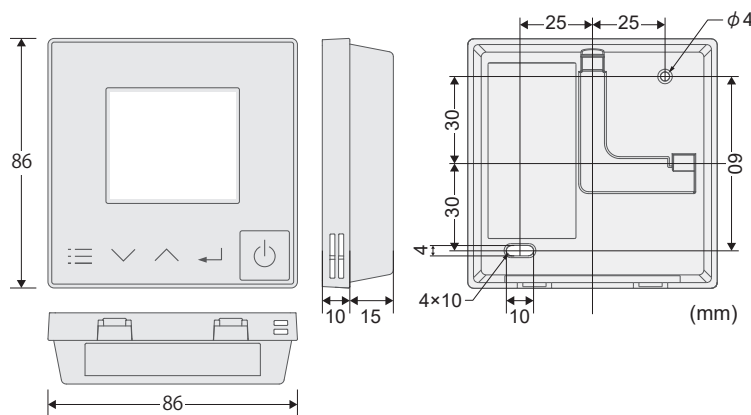
- Install this remote controller vertically.
- When attaching this remote controller, be sure to use the supplied screws and confirm that remote controller is fixed to the surface so that there are no gaps.
- The warranty does not cover the product if it falls from an elevated location.

## Supplied accessories

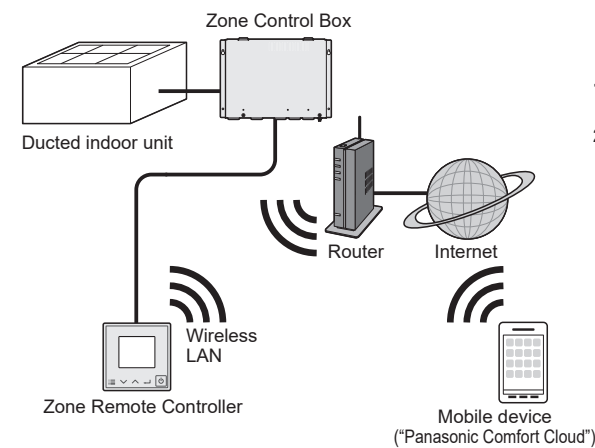
Screw M3.8 x 16 (2)	Operating Instructions (1)	Installation Instructions (1)	Clamper (1)

\*Zone control wiring is not supplied. (field supplied item)

## Dimension

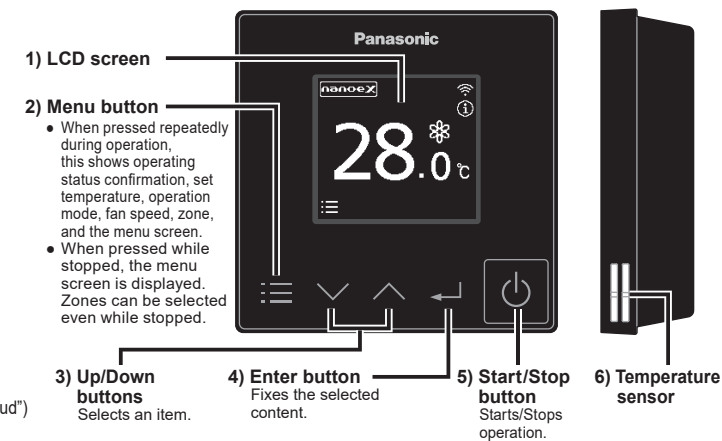


## System Overview



## Part Names (Control panel)

The control panel colour of CZ-RTC6WZ is white.

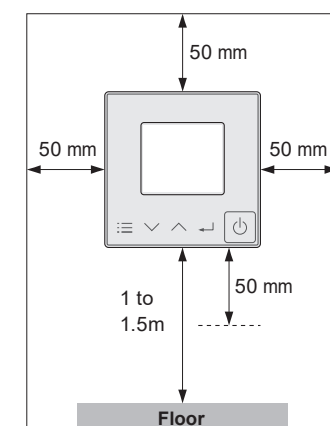


**Note**

- Press centre
- No pen
- No glove

## Installation Precautions

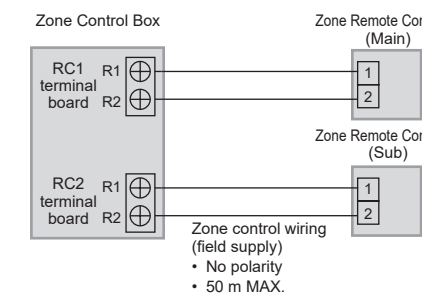
### Installation location



- Install at the height of 1 to 1.5 m from the floor (Location where average room temperature can be detected).
- Keep a space around the remote controller as detailed on the figure shown left.
- Avoid the following locations for installation.
  - In the shadow or backside of objects deviated from the room airflow
  - Location where condensation occurs (The remote controller is not moisture proof or drip proof)
  - Location near heat source
- Keep distance of 1 m or more from the TV, radio and PC. (Image blur or related noise may occur)
- Do not use in special environments. Use in places with much oil (including machine oil), steam, flammable or corrosive gas, voltage fluctuation, surrounding the metal body, may lead to severe decrease in functionality and damage to parts.

### Zone control wiring

#### Wiring diagram



- Type of wiring
  - Use cables of 0.75 mm<sup>2</sup> to 1.25 mm<sup>2</sup> (AWG#18 to AWG#16) (Min. 0.75 mm<sup>2</sup>)
- Wiring between the Zone Control Box and Zone Remote Controller
  - 50 m or less.
- Number of connectable units
  - Up to 1 Zone Remote Controller per RC1/RC2 terminal board.
  - \* Do not connect multiple Zone Remote Controllers to a single RC1/RC2 terminal board.

- When only 1 Zone Remote Controller is to be used, connect it to the RC1 terminal board on the Zone Control Box.
- When 2 Zone Remote Controllers are to be used, connect one to the RC1 terminal board and one to the RC2 terminal board.
- The Zone Remote Controller connected to the RC1 terminal board will become the Main.
- The WLAN function is available only with the Zone Remote Controller (Main).

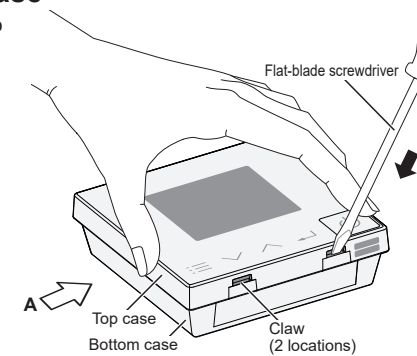
#### Attention

- Use the field supplied Zone control wiring with at least 1 mm in thickness of insulation part including the sheath. Wiring Regulations may differ depending on location. For field wiring rules, please refer to your LOCAL ELECTRICAL CODES. You must ensure that installation complies with relevant rules and regulations.
- Be careful not to connect cables to other terminals of Zone Control Box (e.g. power source wiring terminal). Malfunction may occur.
- Do not bundle together with the power source wiring or store in the same metal tube. Operation error may occur.
- If noise is induced to the unit power supply, attach a noise filter.

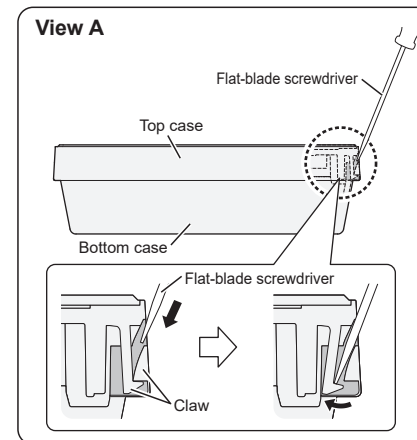
## Mounting

### 1 Remove the top case

- 1 Insert the screwdriver to the bottom case. Insert the flat-blade screw driver to the claws as show in the figure.



- 2 Push the flat-blade screwdriver in. Push down the flat-blade screwdriver along with the slope of the claws until the top case comes off.



### 2 Mount to the wall.

There are 2 types of wall-mounting methods: Exposed type and Embedded type.

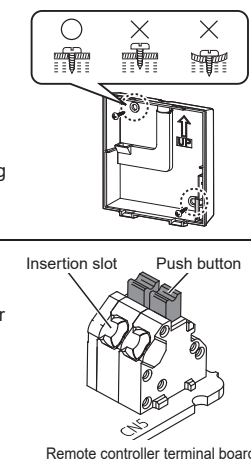
#### Attention

##### Mounting the bottom case

- Tighten the screws securely until the screw heads touch the bottom case. (Otherwise, loose screw heads may hit the PCB and cause malfunction when mounting the top case.)
- Do not over-tighten the screws. (The bottom case may be deformed, resulting in the unit becoming detached from the surface it is fixed to.)

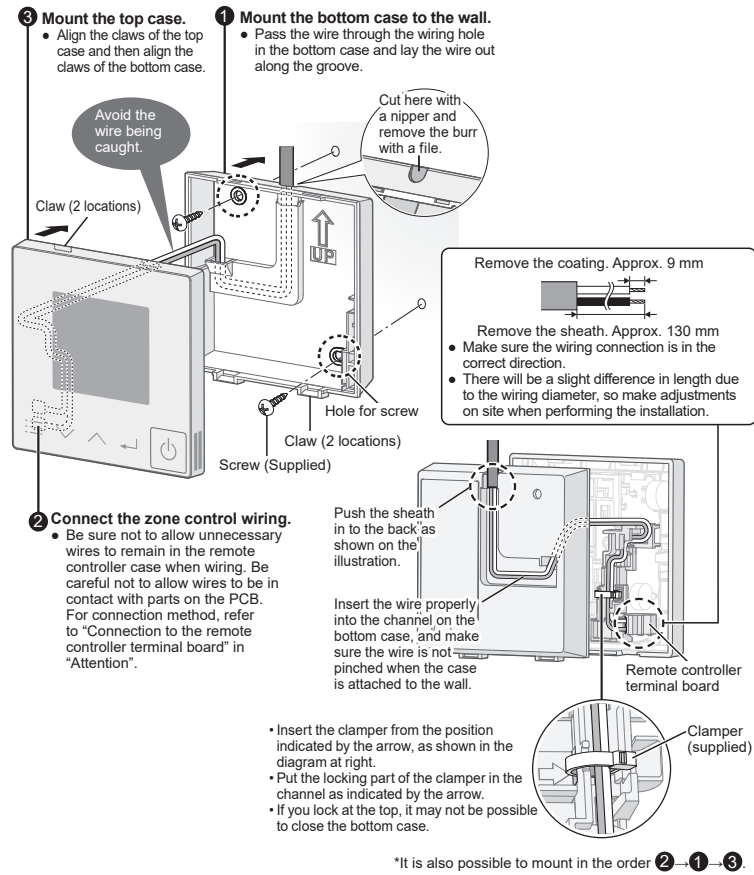
##### Connection to the remote controller terminal board

- Depress the push button using a round bar or finger, insert the zone control wiring securely from the wiring insertion slot and release the push button.
- Pull the zone control wiring lightly, and confirm it is secured.
- There is the danger of shorting if copper wire is exposed. Make sure the wire is properly inserted.



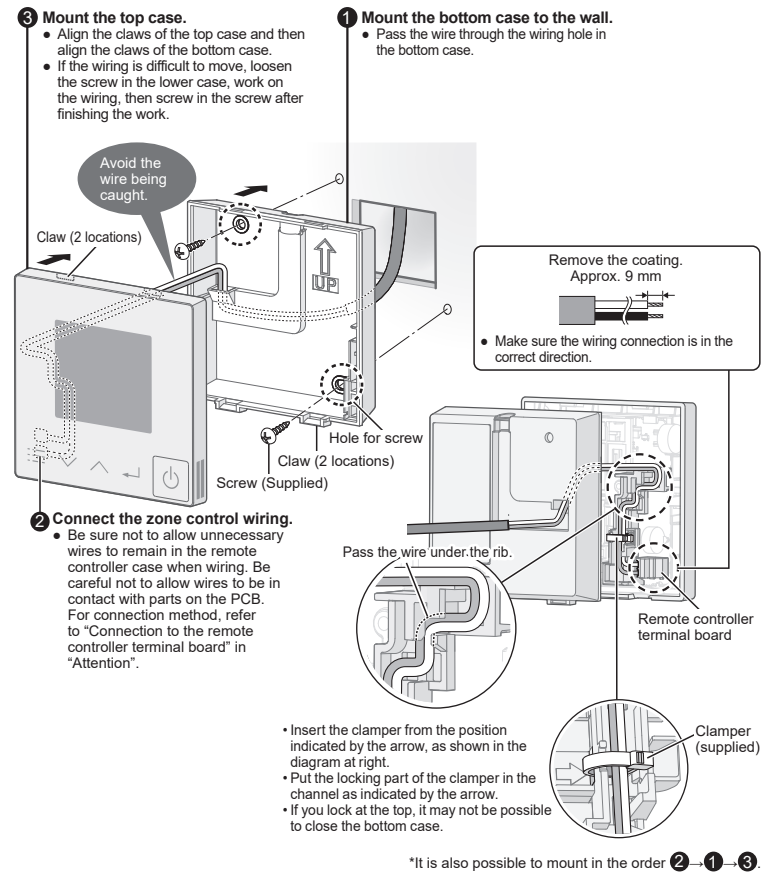
## Exposed type

A protective film is attached on the Control panel.



## Embedded type

A protective film is attached on the Control panel.



### NOTE

- Refer to the Installation Instructions supplied with the Zone Control Box for detailed settings and Zone Control Box setting procedures.
- See the Operating Instructions for WLAN function settings.

## Specifications

Model No.	CZ-RTC6Z / CZ-RTC6WZ
Dimensions	(H) 86 mm × (W) 86 mm × (D) 25 mm
Weight	0.10 kg
Temperature/Humidity range	0 °C to 40 °C / 20% to 80% (No condensation) *Indoor use only.
Power Source	DC16 V (Supplied from Zone Control Box)
OS version on the mobile device for "Panasonic Comfort Cloud" app	Check on the relative app store for supported OS versions.

- iOS is the name of the OS of Apple Inc. IOS is a trademark or registered trademark of Cisco in the US and other countries which has been licensed for use.
- Apple and the Apple logo are trademarks of Apple Inc. that are registered in the US and other countries. App Store is a service mark of Apple Inc.
- Android™, Google Play™ and Google Play™ logos are registered trademarks of Google LLC.

### Maximum radio-frequency power transmitted in the frequency bands

Type of wireless	Frequency band	Max EIRP (dBm)
Wireless LAN functionality	2412 - 2472 MHz	20 dBm