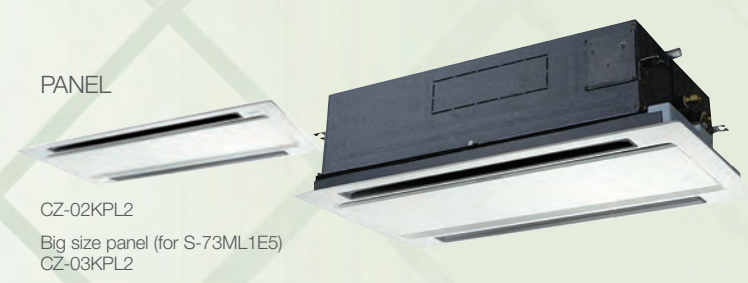


# L1 TYPE 2-Way Cassette

The L1 is very thin, compact, and light, allowing flexible options for installation. A redesigned fan has been used to achieve this size and weight reduction.



### Optional accessory

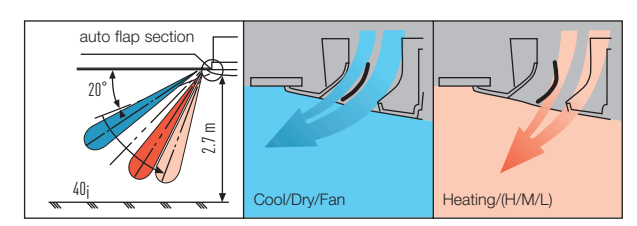


### Technical focus

- Airflow and distribution is automatically altered depending on the operational mode of the unit
- Drain up is possible up to 500 mm via the built-in drain pump
- Simple maintenance

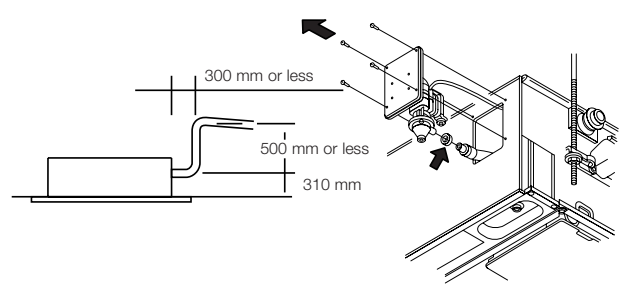
### Auto flap control

Airflow and distribution is automatically altered depending on the operational mode (cooling or heating) of the unit.



### Drain up is possible up to 500 mm via the built-in drain pump.

Maintenance of the drain pump is possible from both sides, from the left side (piping side) and from the inside of the unit.



### Simple maintenance

The drain pan is equipped with site wiring and can be removed. The fan case has a split construction, and the fan motor can be removed easily when the lower case is removed.

Model Name		S-22ML1E5	S-28ML1E5	S-36ML1E5	S-45ML1E5	S-56ML1E5	S-73ML1E5
Power source		220/230/240 V, 1 phase - 50/60 Hz					
Cooling capacity	kW	2.2	2.8	3.6	4.5	5.6	7.3
	BTU/h	7,500	9,600	12,000	15,000	19,000	25,000
Heating capacity	kW	2.5	3.2	4.2	5.0	6.3	8.0
	BTU/h	8,500	11,000	14,000	17,000	21,000	27,000
Power input	Cooling kW	0.086/0.090/0.095	0.086/0.092/0.097	0.088/0.093/0.099	0.091/0.097/0.103	0.091/0.097/0.103	0.135/0.145/0.154
	Heating kW	0.055/0.058/0.062	0.055/0.060/0.064	0.057/0.061/0.066	0.060/0.065/0.070	0.060/0.065/0.070	0.100/0.109/0.117
Running current	Cooling A	0.45/0.45/0.45	0.44/0.45/0.45	0.44/0.45/0.45	0.45/0.45/0.45	0.45/0.45/0.45	0.64/0.65/0.66
	Heating A	0.29/0.29/0.30	0.28/0.29/0.30	0.28/0.29/0.30	0.29/0.29/0.30	0.29/0.29/0.30	0.46/0.48/0.49
Fan	Type	Sirocco fan	Sirocco fan	Sirocco fan	Sirocco fan	Sirocco fan	Sirocco fan
	Air flow rate (H/M/L) m³/h	480/420/360	540/480/420	580/520/460	660/540/480	660/540/480	1,140/960/840
	L/s	133/117/100	150/133/117	150/133/117	183/150/133	183/150/133	317/267/233
	Motor output kW	0.03	0.03	0.03	0.03	0.03	0.05
Sound power level (H/M/L) dB		40/38/35	44/40/37	45/42/39	46/44/40	46/44/40	49/46/44
Sound pressure level (H/M/L) dB(A)		30/27/24	33/29/26	34/31/28	35/33/29	35/33/29	38/35/33
Dimensions * H x W x D mm		350+8x840 (1,060) x600 (680)	350+8x840 (1,060) x600 (680)	350+8x840 (1,060) x600 (680)	350+8x840 (1,060) x600 (680)	350+8x840 (1,060) x600 (680)	350+8x1,140 (1,360) x600 (680)
	Liquid mm (inches)	Ø6.35 (Ø1/4)	Ø6.35 (Ø1/4)	Ø6.35 (Ø1/4)	Ø6.35 (Ø1/4)	Ø6.35 (Ø1/4)	Ø9.52 (Ø3/8)
Pipe connections Gas mm (inches)		Ø12.7 (Ø1/2)	Ø12.7 (Ø1/2)	Ø12.7 (Ø1/2)	Ø12.7 (Ø1/2)	Ø12.7 (Ø1/2)	Ø15.88 (Ø5/8)
	Drain piping	VP-25	VP-25	VP-25	VP-25	VP-25	VP-25
Net weight * kg		23 (+5.5)	23 (+5.5)	23 (+5.5)	23 (+5.5)	23 (+5.5)	30 (+9)

GLOBAL REMARKS	Rated conditions:		
	Cooling	Heating	
	Indoor air temperature	27°C DB / 19°C WB	20°C DB
Outdoor air temperature	35°C DB / 24°C WB	7°C DB / 6°C WB	

\* The values in ( ) for external dimensions and Net weight are the values for the optional ceiling panel. Specifications are subject to change without notice.

### L1 TYPE 2-WAY CASSETTE Dimensions

