

E2 TYPE High Static Ducted

Concealed duct / Air conditioning mode

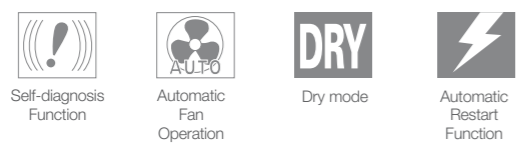
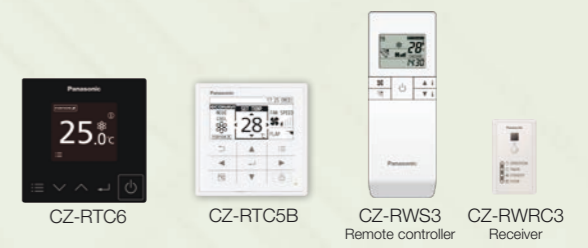


High static and large airflow ducted for exceptional installation flexibility.



S-180ME2E5 / S-224ME2E5 / S-280ME2E5

Optional accessory

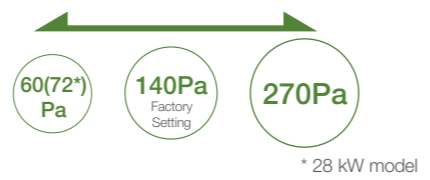


Technical focus

- Design flexibility thanks to high static pressure and large air volume
- DC motor equipped
- Power input 45% less (compared to E1 type)
- Discharge air temperature control to reduce cold drafts during heating operation
- Configurable air temperature control
- Available Fresh Air Intake mode (See page 80-81)

3-step static pressure set up

You can select between the three Static Pressure modes of 270 Pa/140 Pa/60(72*) Pa for extra installation flexibility.



Max. 270 Pa static pressure setting

A maximum static pressure setting of a high 270 Pa enables the use of long ducts for installation in a wide range of spaces. Ideal for large-scale offices, restaurants and other facilities.

Sensible cooling 5-10% improved

New heat exchanger with ϕ 7mm pipe that increases the heat transfer surface to improve sensible cooling (5-10% improvement)

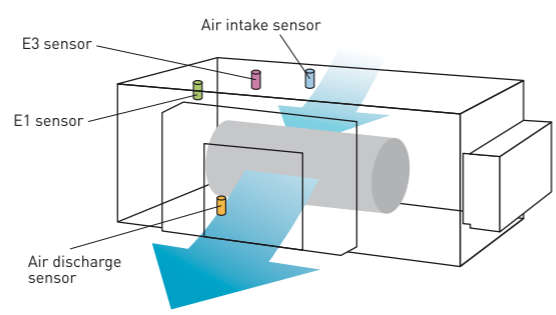
No Rap Valve Kit required

Thanks to improved performance, a Rap Valve Kit (CZ-P160RVK2) is no longer required.



Discharge air temperature control

- Equipped with 4 sensors (Intake/ Discharge)
- Able to control discharge air temperature for accurate room temperature control.
- Possible to reduce cold drafts during heating operation.

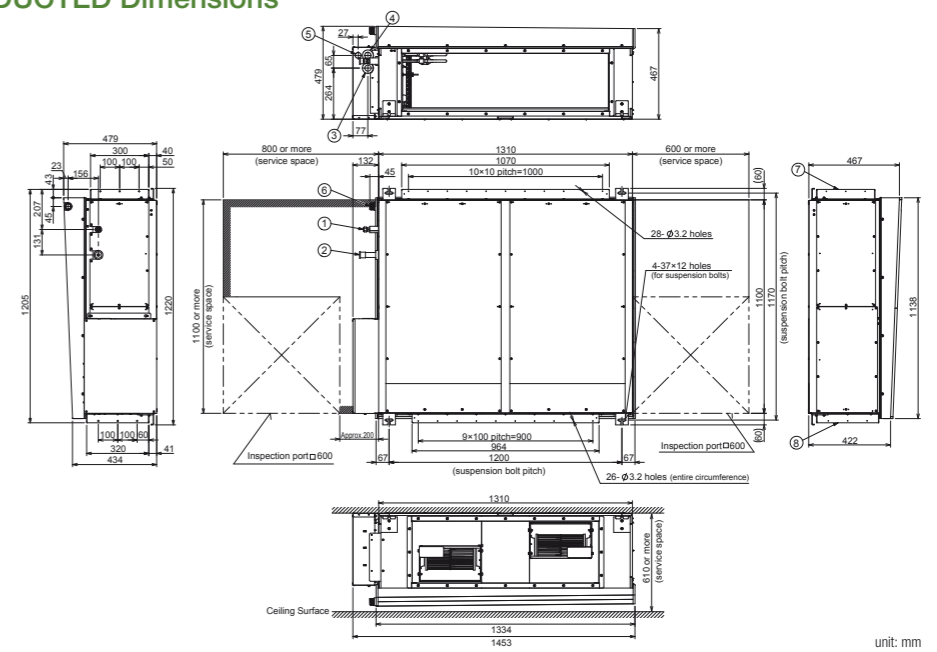


Model Name	S-180ME2E5	S-224ME2E5	S-280ME2E5	
Power source	220/230/240 V, 1 phase - 50 Hz, 220/230 V, 1 phase - 60 Hz			
Cooling capacity	kW	18.0	22.4	28.0
	BTU/h	61,400	76,400	95,500
Heating capacity	kW	20.0	25.0	31.5
	BTU/h	68,200	85,300	107,500
Power input	Cooling kW	0.400	0.440	0.715
	Heating kW	0.400	0.440	0.715
Running current	Cooling A	2.40/2.30/2.20	2.55/2.45/2.35	3.95/3.85/3.70
	Heating A	2.40/2.30/2.20	2.55/2.45/2.35	3.95/3.85/3.70
Fan	Type	Sirocco fan		
	Air flow rate (H/M/L) m ³ /h	2,940/2,640/2,340	3,360/3,060/2,640	4,320/3,780/3,180
	L/s	817/733/650	933/850/733	1,200/1,050/883
	Motor output kW	0.560 x 2		
	External static pressure Pa	140 (60/270)		
Sound power level (H/M/L) dB	76/74/72			
Sound pressure level (H/M/L) dB(A)	44/42/40			
Dimensions H x W x D mm	479 x 1,453 x 1,205			
	479 x 1,453 x 1,205			
Pipe connections	Liquid inches (mm)	Ø9.52 (3/8)		
	Gas inches (mm)	Ø19.05 (3/4)		
	Drain piping	VP-25		
Net weight kg	102			

GLOBAL REMARKS	Rated conditions:	
	Cooling	Heating
	Indoor air temperature	27°C DB / 19°C WB
Outdoor air temperature	35°C DB / 24°C WB	7°C DB / 6°C WB

E2 TYPE HIGH STATIC DUCTED Dimensions

- 1 Refrigerant piping (liquid pipes) Ø9.52
- 2 Refrigerant piping (gas pipes) 180 & 224 type: Ø19.05, 280 type: Ø22.22
- 3 Power supply outlet (Ø25 grommet, rubber)
- 4 Power supply outlet (spare) (Ø30 knock-out)
- 5 Optional outlet for piping
- 6 Drain port 25 A, male thread
- 7 Duct connection for suction
- 8 Duct connection for discharge



unit: mm

E2 TYPE Energy Saving High Fresh Air Ducted

Concealed duct high-static pressure

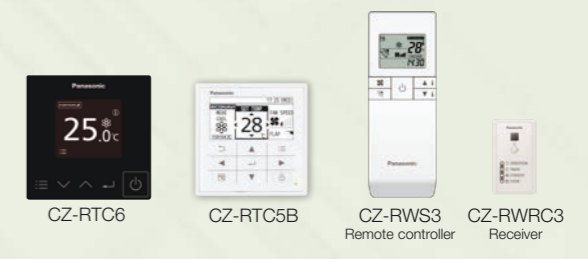


High static and large airflow ducted for exceptional installation flexibility.



S-224ME2E5 / S-280ME2E5

Optional accessory

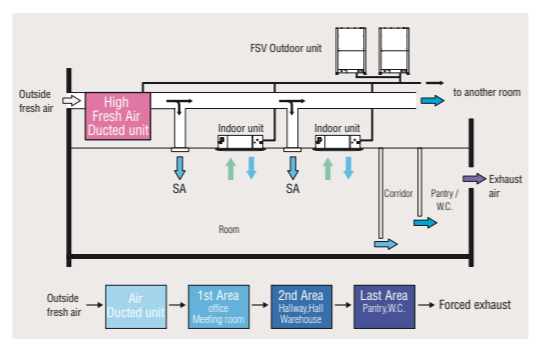


Technical focus

- 100% fresh air intake for ventilation purpose
- Design flexibility with high static pressure and large air volume
- DC motor equipped
- Power input 45% less (compared to H1 type)
- Discharge air temperature control to reduce cold drafts during heating operation
- Configurable air temperature control

High Fresh System

High Fresh System enables delivery of fresh outside air at almost the same temperature and humidity as indoor air without putting a burden on air conditioning.
 * Capable of treating outdoor air only. Indoor air conditioner units are required to adjust indoor air temperature.

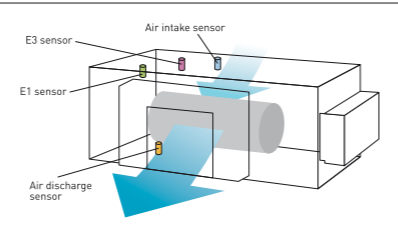


Mix operation unit with standard indoor units

Possible to combine High Fresh Air ducted indoor unit and standard air ducted indoor units. When other indoor units are connected in same circuit, keep following capacity ratio.
 E2 type/Outdoor unit < 30%, and Total of indoors(incl. E2)/outdoor < 100%

Discharge air temperature control

- Equipped with 4 sensors (Intake/ Discharge)
- Able to control discharge air temperature for accurate room temperature control.
- Possible to reduce cold drafts during heating operation.



Remark For High Static Ducted Series

Model	Operation	Rap valve kit CZ-P160RVK2	3way control PCB CZ-CAPE2	3way valve kit CZ-P160HR3	Distribution Joint kit <2pipes> CZ-P160BK2 for 22.4kW unit or less CZ-P680BK2 for more than 22.4kW	Distribution Joint kit <3pipes> CZ-P224BH2 for 22.4kW unit CZ-P680BH2 for 28.0kW unit
E2 Type Energy Saving High-Fresh Air Ducted	Cooling Only	-	-	-	-	-
	Cool or Heat	2pcs	2pcs	-	2pcs	-
	Heat Recovery	-	2pcs	2pcs	1pc	1pc

Model Name		S-224ME2E5	S-280ME2E5
Power source		220/230/240 V, 1 phase - 50 Hz, 220/230 V, 1 phase - 60 Hz	
Cooling capacity	kW	22.4	28.0
	BTU/h	76,400	95,500
Heating capacity	kW	21.2	26.5
	BTU/h	72,300	90,400
Power input	Cooling kW	0.290	0.350
	Heating kW	0.290	0.350
Running current	Cooling A	1.90/1.85/1.80	2.30/2.20/2.10
	Heating A	1.90/1.85/1.80	2.30/2.20/2.10
Fan	Type	Sirocco fan	
	Air flow rate m³/h	1,700	2,100
	L/s	472	583
	Motor output kW	0.560 x 2	0.750 x 2
	External static pressure Pa	200	200
Sound power level	dB	75	76
Sound pressure level	dB(A)	43	44
Dimensions	H x W x D mm	479 x 1,453 x 1,205	
	Liquid inches (mm)	Ø9.52 (Ø3/8)	Ø9.52 (Ø3/8)
Pipe connections	Gas inches (mm)	Ø19.05 (Ø3/4)	Ø22.22 (Ø7/8)
	Drain piping	VP-25	
Net weight	kg	102	106

GLOBAL REMARKS: Rated conditions: Cooling 33°C DB / 28°C WB, Heating 0°C DB / -2.9°C WB. Specifications are subject to change without notice.

E2 TYPE HIGH STATIC DUCTED Dimensions

- 1 Refrigerant piping (liquid pipes) Ø9.52
- 2 Refrigerant piping (gas pipes) 224 type: Ø19.05, 280 type: Ø22.22
- 3 Power supply outlet (Ø25 grommet, rubber)
- 4 Power supply outlet (spare) (Ø30 knock-out)
- 5 Optional outlet for piping
- 6 Drain port 25 A, male thread
- 7 Duct connection for suction
- 8 Duct connection for discharge

