

K2_{TYPE} Wall Mounted

| Model Name | | S-22MK2E5A | S-28MK2E5A | S-36MK2E5A | S-45MK2E5A | |
|------------------------------|-----------------------|-----------------------------------|-------------------|-------------------|-------------------|-------------------|
| Power source | | 220/230/240 V, 1 phase - 50/60 Hz | | | | |
| Cooling capacity | kW | 2.20 | 2.80 | 3.60 | 4.5 | |
| | BTU/h | 7,500 | 9,600 | 12,300 | 15,400 | |
| Heating capacity | kW | 2.50 | 3.20 | 4.20 | 5.0 | |
| | BTU/h | 8,500 | 10,900 | 14,300 | 17,100 | |
| Power input | Cooling kW | 0.025/0.025/0.025 | 0.025/0.025/0.025 | 0.030/0.030/0.030 | 0.030/0.030/0.030 | |
| | Heating kW | 0.025/0.025/0.025 | 0.025/0.025/0.025 | 0.030/0.030/0.030 | 0.030/0.030/0.030 | |
| Running current | Cooling A | 0.21 | 0.23 | 0.25 | 0.33/0.32/0.31 | |
| | Heating A | 0.21 | 0.23 | 0.25 | 0.33/0.32/0.31 | |
| Fan | Type | Cross-flow fan | Cross-flow fan | Cross-flow fan | Cross-flow fan | |
| | Air flow rate (H/M/L) | m ³ /h | 540/450/390 | 570/498/390 | 654/540/390 | 870/750/600 |
| | | L/s | 150/125/108 | 158/138/108 | 182/150/108 | 242/208/167 |
| | Motor output | kW | 0.03 | 0.03 | 0.03 | 0.054 |
| Sound power level (H/M/L) | dB | 51/48/44 | 52/49/44 | 55/51/44 | 53/50/48 | |
| Sound pressure level (H/M/L) | dB(A) | 36/33/29 | 37/34/29 | 40/36/29 | 38/35/33 | |
| Dimensions | H x W x D | mm | 290 x 870 x 214 | 290 x 870 x 214 | 290 x 870 x 214 | 302 x 1,120 x 236 |
| | | mm (inches) | Ø6.35 (Ø1/4) | Ø6.35 (Ø1/4) | Ø6.35 (Ø1/4) | Ø6.35 (Ø1/4) |
| Pipe connections | Gas | mm (inches) | Ø12.7 (Ø1/2) | Ø12.7 (Ø1/2) | Ø12.7 (Ø1/2) | Ø12.7 (Ø1/2) |
| | Drain piping | mm | Ø18 | Ø18 | Ø18 | Ø18 |
| Net weight | kg | 9 | 9 | 9 | 13 | |

| GLOBAL REMARKS | Rated conditions: | |
|----------------|-------------------------|-------------------|
| | Indoor air temperature | 27°C DB / 19°C WB |
| | Outdoor air temperature | 35°C DB / 24°C WB |

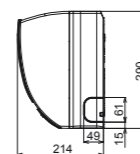
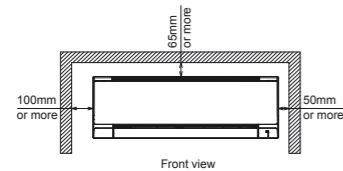
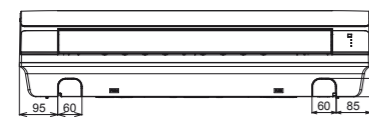
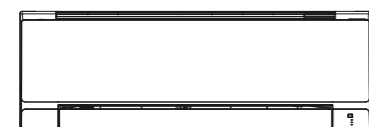
Specifications are subject to change without notice.

| | Cooling | Heating |
|-------------------------|-------------------|-----------------|
| Indoor air temperature | 27°C DB / 19°C WB | 20°C DB |
| Outdoor air temperature | 35°C DB / 24°C WB | 7°C DB / 6°C WB |

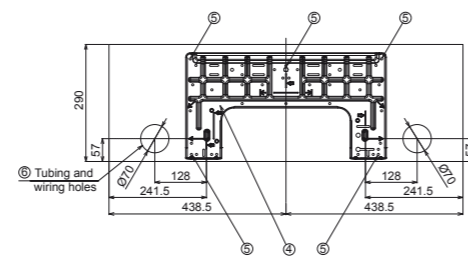
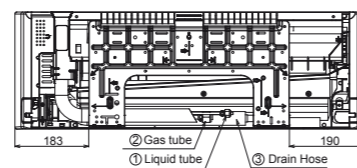
| | S-56MK2E5A | S-73MK2E5A | S-106MK2E5A |
|------------------------------|-----------------------------------|-------------------|-------------------|
| Power source | 220/230/240 V, 1 phase - 50/60 Hz | | |
| Cooling capacity | 5.6 | 7.3 | 10.6 |
| | 19,100 | 24,900 | 36,200 |
| Heating capacity | 6.3 | 8.0 | 11.4 |
| | 21,500 | 27,300 | 38,900 |
| Power input | 0.035/0.035/0.035 | 0.055/0.055/0.055 | 0.080/0.080/0.080 |
| | 0.035/0.035/0.035 | 0.055/0.055/0.055 | 0.080/0.080/0.080 |
| Running current | 0.36/0.35/0.34 | 0.52/0.51/0.50 | 0.72/0.70/0.68 |
| | 0.36/0.35/0.34 | 0.52/0.51/0.50 | 0.72/0.70/0.68 |
| Fan | Cross-flow fan | Cross-flow fan | Cross-flow fan |
| | 960/840/720 | 1,170/1,020/840 | 1,290/1,110/900 |
| | 267/233/200 | 325/283/233 | 358/308/250 |
| | 0.054 | 0.054 | 0.054 |
| Sound power level (H/M/L) | 55/52/50 | 62/59/55 | 64/61/57 |
| Sound pressure level (H/M/L) | 40/37/35 | 47/44/40 | 49/46/42 |
| Dimensions | 302 x 1,120 x 236 | 302 x 1,120 x 236 | 302 x 1,120 x 236 |
| Pipe connections | Ø6.35 (Ø1/4) | Ø9.52 (Ø3/8) | Ø9.52 (Ø3/8) |
| | Ø12.7 (Ø1/2) | Ø15.88 (Ø5/8) | Ø15.88 (Ø5/8) |
| Net weight | 13 | 14 | 14 |

K2 (22-36) TYPE WALL MOUNTED Dimensions

SIZE 22-36



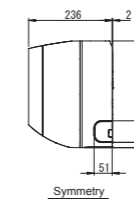
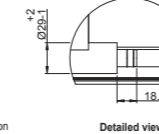
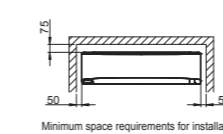
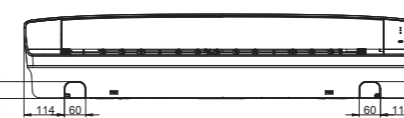
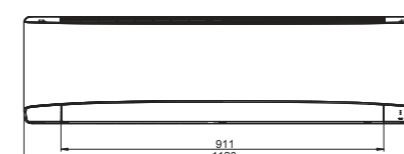
- 1 Refrigerant tubing (liquid tube) ø6.35(flared)
- 2 Refrigerant tubing (gas tube) ø12.7(flared)
- 3 Drain hose (outer dia. ø16)
- 4 Rear panel (PL BACK)
- 5 Rear panel fixing holes (ø5 holes or 5X13 oval holes)
- 6 Tubing and wiring holes (ø70)



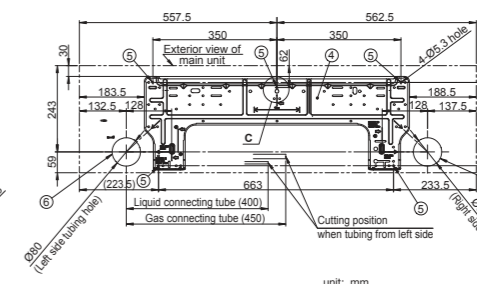
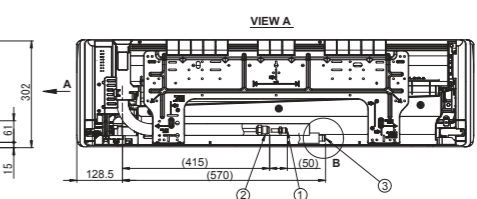
unit: mm

K2 (45-106) TYPE WALL MOUNTED Dimensions

SIZE 45-106



- 1 Refrigerant tubing (liquid tube) Type 45-56 Ø6.35 (flared) Type 73-106 Ø9.52 (flared)
- 2 Refrigerant tubing (gas tube) Type 45-56 Ø12.7 (flared) Type 73-106 Ø15.88 (flared)
- 3 Drain hose
- 4 Rear panel
- 5 Rear panel fixing holes (Ø5.3 holes or as shown in figure "C")
- 6 Tubing and wiring holes (Ø80)



unit: mm