










FOR OVERSEA MARKET

秘 Confidential  
保存10年 Keep for 10Years

# PRODUCT SPECIFICATION

MODEL No.	FV-E15PM1L  3 Pages (Without cover)
-----------	---

QA Department	R&D Centre					
	Technical Regulation Department	Intellectual Property Department	Planning Department	Product Design Department		
Check	Check	Check	Check	Approval	Check	Make
 //	 //	 2022/11/1	 //	 //	 //	 2022/11/1

Sale and Planning Departments		
PESHK Promotion	IAQ BU Product Planning	OMC IAQ Div./ PESHK(HK/TW MKT)
Receive	Check	Check
//	 2022/11/11	 //

# Panasonic

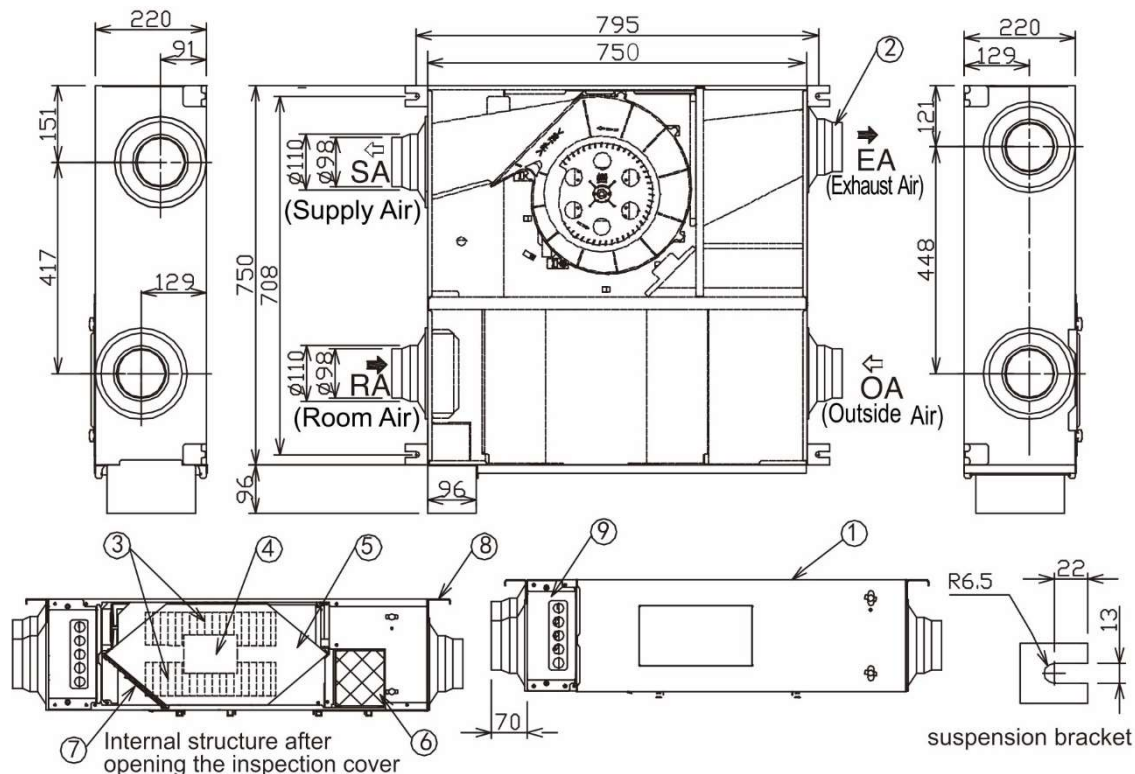
Panasonic Ecology Systems Guangdong Co.,Ltd.

广东松下环境系统有限公司

## External Dimensions

### Mounting Dimensions:

Unit: mm



## Component Parts List

### Parts List

No.	Part name	Material	Qty.	No.	Part name	Material	Qty.
①	Frame	Galvanized sheet	1	⑥	Outdoor filter (PM2.5 filter)	-	1
②	Adapter	ABS	4	⑦	Indoor filter	-	1
③	Impeller	PP	2	⑧	Suspension bracket	-	4
④	Fan motor	-	1	⑨	Switch box	Galvanized sheet	1
⑤	Heat exchange core	-	1				

### Accessory List

No.	Drawing	Name and Purpose	Quantity
①		Installation and operating instructions	1
②		Model label	1

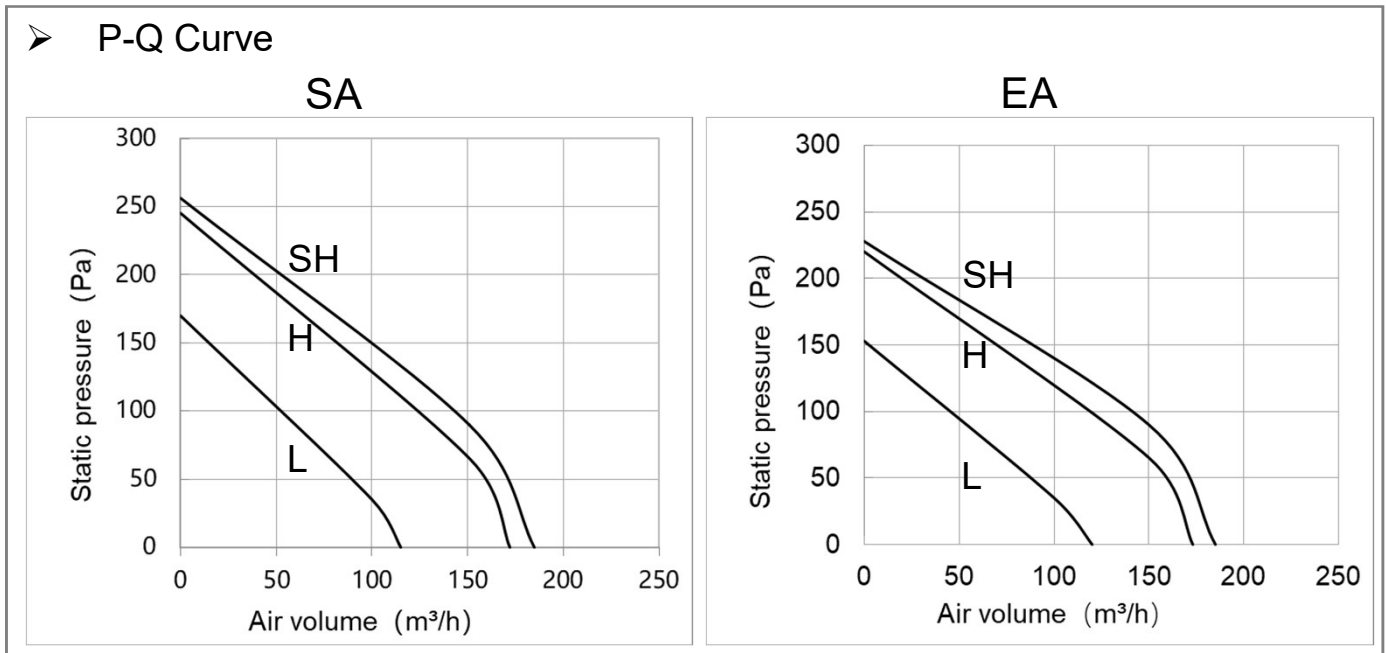
## Authentication Information

### SIRIM

Product		Page	
Energy recovery ventilator		1/3	
Model		FV-E15PM1L	
Make Date	2022.10.28	Scale	Drawing No. ERV22002
Modification Date			Modification No.
Panasonic Ecology Systems Guangdong Co., Ltd.			

## ■ Specification Data

### ➤ P-Q Curve



### ➤ Specification

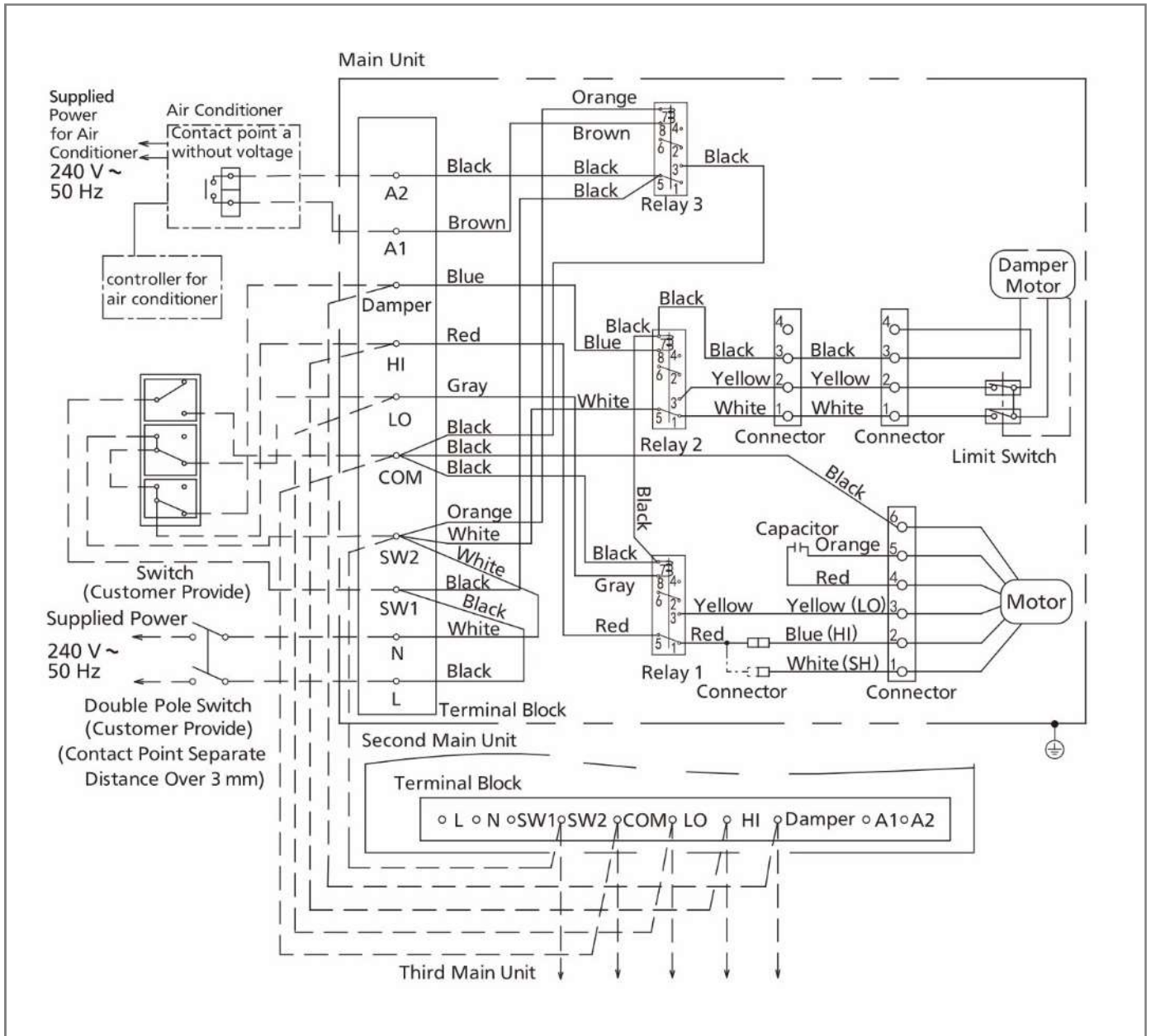
Model	V/Hz	Notch	Power (W)	Air volume (m³/h)	Static pressure (Pa)	Heat exchange efficiency(%)		Enthalpy exchange efficiency(%)		Noise
						Cooling	Heating	Cooling	Heating	
FV-E15PM1L	240V / 50Hz	SH	100	150	90	64	80	69	75	33
		H	90	150	65	64	80	69	75	31
		L	55	100	35	72	83	76	78	26

#### Notes:

1. The value shown above is measured under total pressure.
2. The input power indicated on name plate is the maximum at static pressure of 0 Pa.
3. Noise is measured at the position 1.5 m away from the bottom side of product in complete anechoic room, the actual value may be more than the indicated due to effect of echo.
4. In case other conditions remain unchanged, noise will be up by 1.5 dB(A) when measured in the half anechoic room.

Product		Page		2/3	
Energy recovery ventilator		Model			
FV-E15PM1L		FV-E15PM1L			
Make Date	2022.10.28	Scale	Drawing No.	ERV22002	
Modification Date			Modification No.		
Panasonic Ecology Systems Guangdong Co., Ltd.					

## ■ Wiring Diagram



Product		Page		3/3	
Energy recovery ventilator		Model		FV-E15PM1L	
Make Date	2022.10.28	Scale	Drawing No.	ERV22002	
Modification Date			Modification No.		
Panasonic Ecology Systems Guangdong Co., Ltd.					