

2-WAY Mini-FSV LE2 Series

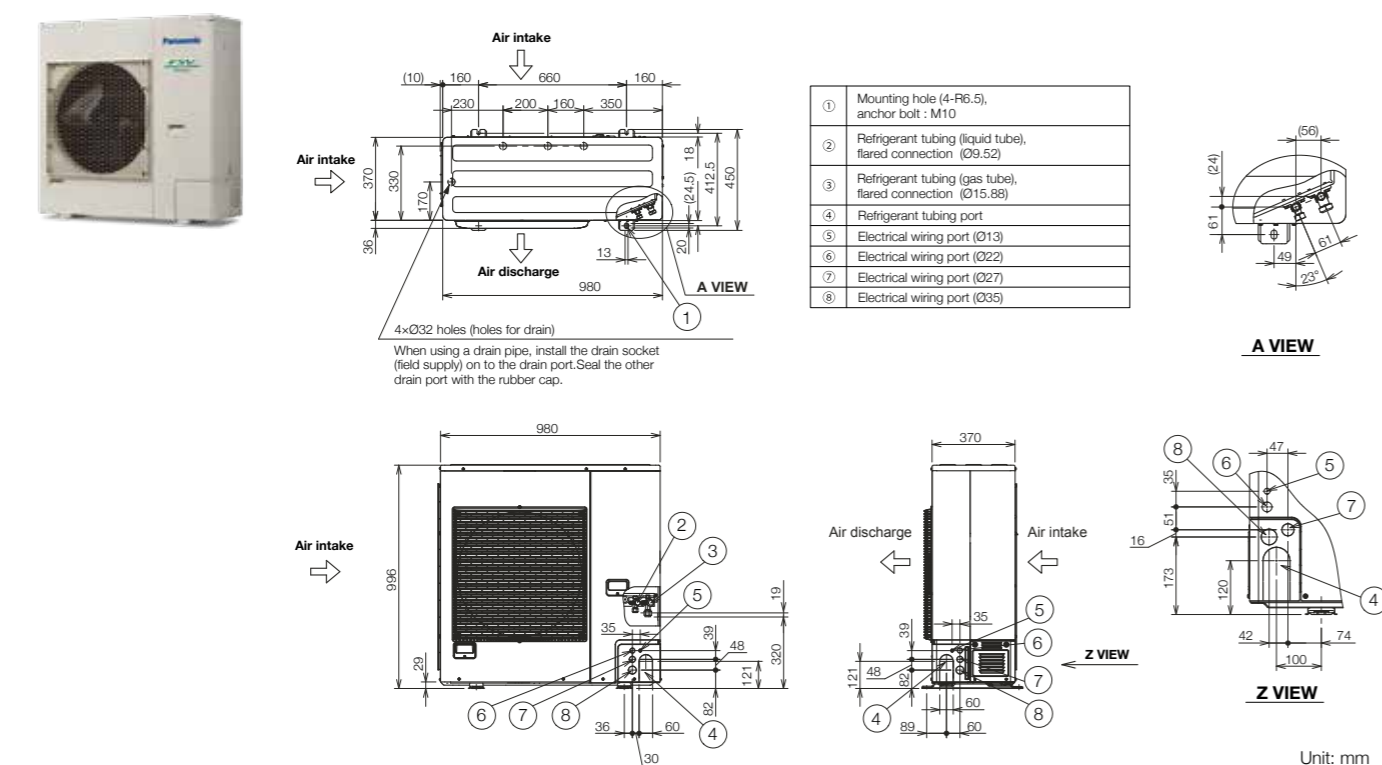
HP	4			4			5			5			6			6					
Model name	U-4LE2H4			U-4LE2H7			U-5LE2H4			U-5LE2H7			U-6LE2H4			U-6LE2H7					
Power supply	220/230/240V/1-phase/50Hz 220/230V/1-phase/60Hz			380/400/415V/3-phase/50Hz 380/400V/3-phase/60Hz			220/230/240V/1-phase/50Hz 220/230V/1-phase/60Hz			380/400/415V/3-phase/50Hz 380/400V/3-phase/60Hz			220/230/240V/1-phase/50Hz 220/230V/1-phase/60Hz			380/400/415V/3-phase/50Hz 380/400V/3-phase/60Hz					
Voltage	220V	230V	240V	380V	400V	415V	220V	230V	240V	380V	400V	415V	220V	230V	240V	380V	400V	415V			
Capacity	Cooling	kW		12.1		12.1		14.0		14.0		15.5		15.5		15.5		15.5			
	Heating	BTU/h		41,300		41,300		47,800		47,800		52,900		52,900		52,900		52,900			
EER/COP	Cooling	W/W		5.08		5.08		4.61		4.61		4.27		4.27		4.27		4.27			
	Heating	W/W		5.95		5.95		5.25		5.25		5.08		5.08		5.08		5.08			
Dimensions	H x W x D			mm			996 x 980 x 370			996 x 980 x 370			996 x 980 x 370			996 x 980 x 370					
Net weight	kg			106			106			106			106			106					
	Cooling	Running current	A	11.90	11.40	10.90	3.89	3.69	3.56	15.20	14.50	13.90	4.91	4.67	4.50	18.10	17.30	16.60	5.87	5.57	5.37
		Power input	kW	2.38	2.38	2.38	2.38	2.38	3.04	3.04	3.04	3.04	3.04	3.63	3.63	3.63	3.63	3.63	3.63	3.63	3.63
	Heating	Running current	A	10.60	10.10	9.70	3.47	3.29	3.18	15.20	14.60	14.0	4.93	4.68	4.51	16.20	15.50	14.90	5.25	4.99	4.81
Power input		kW	2.10	2.10	2.10	2.10	2.10	3.05	3.05	3.05	3.05	3.05	3.25	3.25	3.25	3.25	3.25	3.25	3.25	3.25	
Starting current	A	1			1			1			1			1			1				
Air flow rate	m ³ / min	69			69			72			72			74			74				
	L/s	1,150			1,150			1,200			1,200			1,233			1,233				
Refrigerant amount at shipment	kg	R410A 6.70			R410A 6.70			R410A 6.70			R410A 6.70			R410A 6.70			R410A 6.70				
Piping connection	Gas pipe	mm (inches)		Ø15.88 (Ø5/8)		Ø15.88 (Ø5/8)		Ø15.88 (Ø5/8)		Ø15.88 (Ø5/8)		Ø15.88 (Ø5/8)		Ø15.88 (Ø5/8)		Ø15.88 (Ø5/8)		Ø15.88 (Ø5/8)			
	Liquid pipe	mm (inches)		Ø9.52 (Ø3/8)		Ø9.52 (Ø3/8)		Ø9.52 (Ø3/8)		Ø9.52 (Ø3/8)		Ø9.52 (Ø3/8)		Ø9.52 (Ø3/8)		Ø9.52 (Ø3/8)		Ø9.52 (Ø3/8)			
Ambient temperature operating range	Cooling	-10°CDB~+46°CDB		-10°CDB~+46°CDB		-10°CDB~+46°CDB		-10°CDB~+46°CDB		-10°CDB~+46°CDB		-10°CDB~+46°CDB		-10°CDB~+46°CDB		-10°CDB~+46°CDB		-10°CDB~+46°CDB			
	Heating	-20°CWB~+18°CWB		-20°CWB~+18°CWB		-20°CWB~+18°CWB		-20°CWB~+18°CWB		-20°CWB~+18°CWB		-20°CWB~+18°CWB		-20°CWB~+18°CWB		-20°CWB~+18°CWB		-20°CWB~+18°CWB			
Sound pressure level (Cooling)	Normal mode	dB(A)		52.0		52.0		53.0		53.0		54.0		54.0		54.0		54.0			
	Silent mode (3)	dB(A)		45.0		45.0		46.0		46.0		47.0		47.0		47.0		47.0			
Sound power level (Cooling)	Normal mode	dB		69.0		69.0		71.0		71.0		73.0		73.0		73.0		73.0			

These specifications are subject to change without notice. High durable model (with suffix "E") has same specifications.

Global remarks	Rated conditions:		Cooling	Heating
	Indoor air temperature		27°C DB / 19°C WB	20°C DB
	Outdoor air temperature		35°C DB	7°C DB / 6°C WB

Dimensions

U-4LE2H4 / U-4LE2H7
U-5LE2H4 / U-5LE2H7
U-6LE2H4 / U-6LE2H7



Unit: mm

2-WAY Mini-FSV LE1 Series

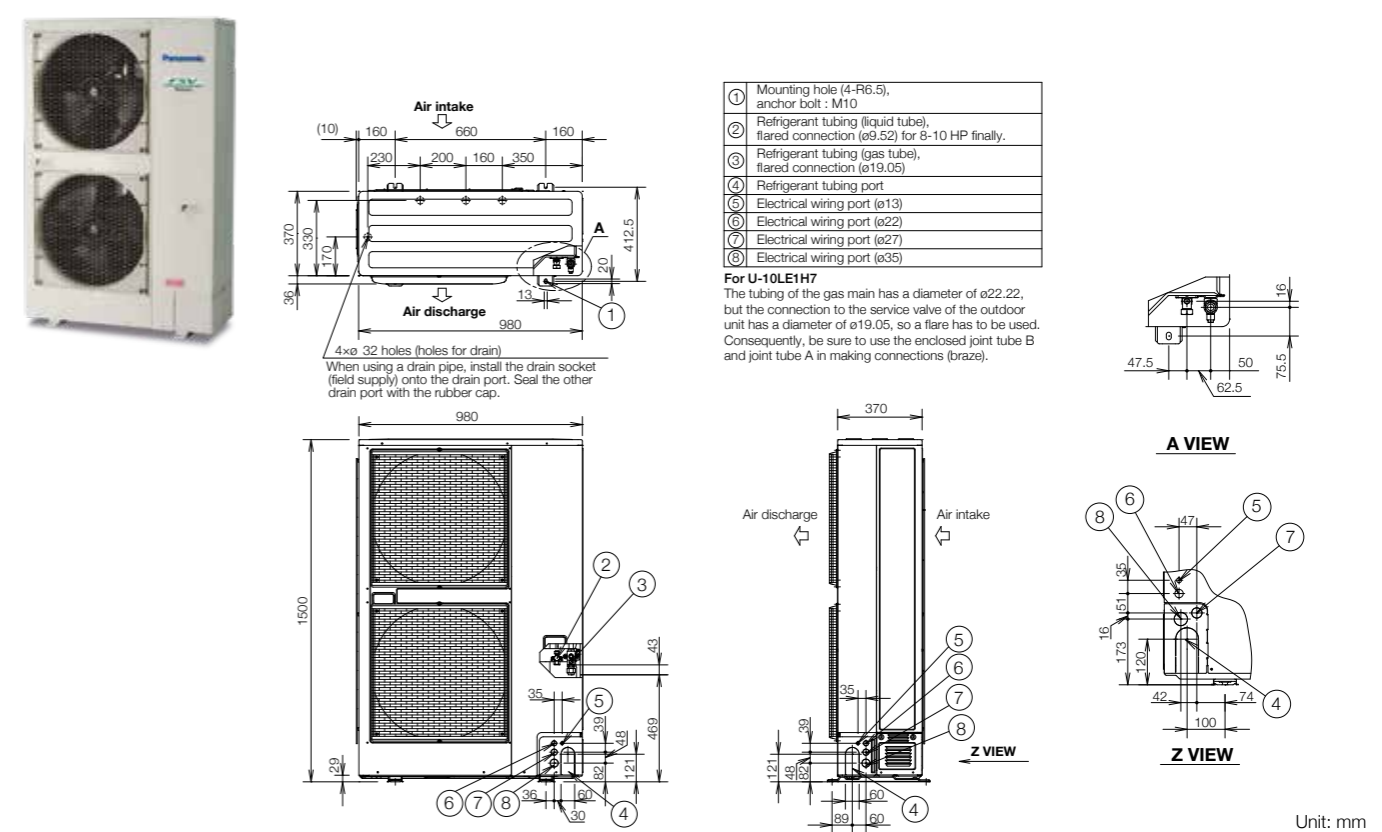
HP	8			10					
Model name	U-8LE1H7			U-10LE1H7					
Power supply	380/400/415V/3-phase/50Hz 380/400V/3-phase/60Hz			380/400/415V/3-phase/50Hz 380/400V/3-phase/60Hz					
Voltage	380V	400V	415V	380V	400V	415V			
Capacity	Cooling	kW		22.4		28.0			
	Heating	BTU/h		76,500		95,600			
EER/COP	Cooling	W/W		4.20		3.59			
	Heating	W/W		4.52		4.55			
Dimensions	H x W x D			mm			1,500 x 980 x 370		
Net weight	kg			132			133		
Electrical ratings	Cooling	Running current	A	8.70	8.25	7.95	12.7	12.1	11.7
		Power input	kW	5.33	5.33	5.33	7.80	7.80	7.80
	Heating	Running current	A	9.05	8.60	8.25	10.0	9.55	9.20
		Power input	kW	5.53	5.53	5.53	6.15	6.15	6.15
Starting current	A	1			1				
Air flow rate	m ³ / min			150			160		
	L/s			2,500			2,667		
Refrigerant amount at shipment	kg			R410A 6.30			R410A 6.60		
Piping connection	Gas pipe	mm (inches)		Ø19.05 (Ø3/4)		Ø22.22 (Ø7/8)		Ø22.22 (Ø7/8)	
	Liquid pipe	mm (inches)		Ø9.52 (Ø3/8)		Ø9.52 (Ø3/8)		Ø9.52 (Ø3/8)	
Ambient temperature operating range	Cooling: -10°CDB~+46°CDB, Heating: -20°CWB~+18°CWB			Cooling: -10°CDB~+46°CDB, Heating: -20°CWB~+18°CWB					
Sound pressure level (Cooling)	Normal mode	dB(A)		59.0		62.0			
	Silent mode (3)	dB(A)		52.0		55.0			
Sound power level (Cooling)	Normal mode	dB		80.0		83.0			

These specifications are subject to change without notice. High durable model (with suffix "E") has same specifications.

Global remarks	Rated conditions:		Cooling	Heating
	Indoor air temperature		27°C DB / 19°C WB	20°C DB
	Outdoor air temperature		35°C DB	7°C DB / 6°C WB

Dimensions

U-8LE1H7 / U-10LE1H7



Unit: mm